

User Manual

Wireless Dog Fence System



Package Contents



Friendly Reminder

- * You are recommended to use this device in an open area, the transmitter should be placed 3 feet above ground at least to avoid barriers which will interfere radio signal.
- * Not recommended for aggressive dogs. DO NOT use this device if your dog is behaving aggressively.

- * Some small size dogs may not withstand the shock, like Chihuahua. If you are not sure whether this device is right for your dog, please talk to your veterinarian or a certified dog trainer.
- * The first shock level should be tried first and the level should be gradually increased if necessary.
- * No more than 12 hours per day to wear the receiver collar.
- * If a rash or sore is found, stop using the collar until the skin is healed.
- * Always keep dog's neck clean.
- * Please keep this dog fence away from children to avoid their playing causing unintended electric shock.
- * The level of beep sound can't be adjusted.
- * This device is intended to use for dogs only.

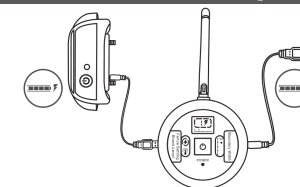
Specification

- * Color: Black
- * Material: ABS
- * Input: 100-240V
- * Support Max 3 Receivers
- * Remote Transmission Distance: 220m/722ft
- * Adjustable Collar Circumference: 5.5 in-23.6in
- * Transmitter Battery: 1×Built-in 3.7V 300mA Lithium Battery
- * Receiver Battery: 1×Built-in 3.7V 300mA Lithium Battery
- * Charging Time: 4Hrs
- * Work Time: 10Days
- * Shock Intensity Level: 0-8 Levels Adjustable
- * Transmission Intensity Level: 1-4 Levels Adjustable
- * Receiver Waterproof Rate: IP67
- * USB Cable Length: 83cm/32.7in

Product Structure



Receiver & Transmitter Recharge



Please charge the Transmitter and the Receiver for at least 5 hours before first use.

- * Plug the USB charging cable to the output port of the Transmitter, connect the Receiver's charging port, and plug to the adapter.
- * After charging, the receiver rubber cover of the charging port must be tightly covered to avoid water.

User Manual

Wireless Dog Fence System



Package Contents



Friendly Reminder

- * You are recommended to use this device in an open area, the transmitter should be placed 3 feet above ground at least to avoid barriers which will interfere radio signal.
- * Not recommended for aggressive dogs. DO NOT use this device if your dog is behaving aggressively.

- * Some small size dogs may not withstand the shock, like Chihuahua. If you are not sure whether this device is right for your dog, please talk to your veterinarian or a certified dog trainer.
- * The first shock level should be tried first and the level should be gradually increased if necessary.
- * No more than 12 hours per day to wear the receiver collar.
- * If a rash or sore is found, stop using the collar until the skin is healed.
- * Always keep dog's neck clean.
- * Please keep this dog fence away from children to avoid their playing causing unintended electric shock.
- * The level of beep sound can't be adjusted.
- * This device is intended to use for dogs only.

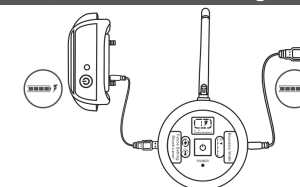
Specification

- * Color: Black
- * Material: ABS
- * Input: 100-240V
- * Support Max 3 Receivers
- * Remote Transmission Distance: 220m/722ft
- * Adjustable Collar Circumference: 5.5 in-23.6in
- * Transmitter Battery: 1×Built-in 3.7V 300mA Lithium Battery
- * Receiver Battery: 1×Built-in 3.7V 300mA Lithium Battery
- * Charging Time: 4Hrs
- * Work Time: 10Days
- * Shock Intensity Level: 0-8 Levels Adjustable
- * Transmission Intensity Level: 1-4 Levels Adjustable
- * Receiver Waterproof Rate: IP67
- * USB Cable Length: 83cm/32.7in

Product Structure



Receiver & Transmitter Recharge



Please charge the Transmitter and the Receiver for at least 5 hours before first use.

- * Plug the USB charging cable to the output port of the Transmitter, connect the Receiver's charging port, and plug to the adapter.
- * After charging, the receiver rubber cover of the charging port must be tightly covered to avoid water.

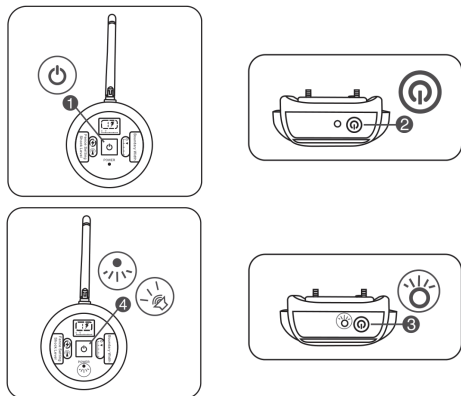
Receiver Indicator Light

- * In the power on state, the LED indicator flash once every 1 second when charging, and once every 4 seconds after full charge.
- * In the power off state, the LED indicator flash once every 1 second when charging, and the LED indicator goes out after full charge.
- * When in low battery, the LED indicator of the Receiver will flash every 1 second.

Transmitter Indicator Light

- * The LED indicator is always on during charging and goes out after full charge.
- * When in low battery, the LED indicator of the Transmitter will flash every 1 second.

How to Pair Receiver & Transmitter



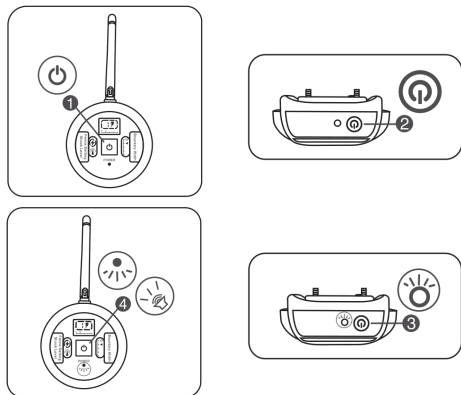
Receiver Indicator Light

- * In the power on state, the LED indicator flash once every 1 second when charging, and once every 4 seconds after full charge.
- * In the power off state, the LED indicator flash once every 1 second when charging, and the LED indicator goes out after full charge.
- * When in low battery, the LED indicator of the Receiver will flash every 1 second.

Transmitter Indicator Light

- * The LED indicator is always on during charging and goes out after full charge.
- * When in low battery, the LED indicator of the Transmitter will flash every 1 second.

How to Pair Receiver & Transmitter



Pairing should be completed in 10 seconds; If unsuccessful, you can repeat the pairing steps; A Transmitter can be paired with unlimited Receivers.

- Step1:** Long press Transmitter power button for 2 seconds to turn on.
- Step2:** Short press Receiver power button and hear beep sound to turn on.
- Step3:** Long press Receiver power button for 2 seconds, after hearing beep sound again and the LED indicator keep fast flashing.
- Step4:** Short press Transmitter power button within 10 seconds, the LED indicator of Transmitter keep flashing, and hearing a long beep sound from the Receiver, means pairing successfully.

Working Principle

- * Long press Power button of the transmitter for 2 seconds to turn on/off. Short press Receiver power button and hear beep sound to turn on/off.
- * If your dog walks out of the signal boundary of the transmitter, the Receiver will beep for 3 times, then start to shock continuously for 3 minutes, pause for 1 minute and start to shock for 3 minutes alternately until the dog back into the signal boundary.
- * When you don't want the dog to escape your villa, put the paired Receiver on your dog, and place the Transmitter in a proper position at the villa, adjust the proper distance.

Wireless Fence & Shock Function

The following data is test base on the transmitter is at 1m/3.28ft and receiver at 0.2m/0.65ft height, and it is only for reference. Some weather and surrounding environmental disturbances (such

Pairing should be completed in 10 seconds; If unsuccessful, you can repeat the pairing steps; A Transmitter can be paired with unlimited Receivers.

- Step1:** Long press Transmitter power button for 2 seconds to turn on.
- Step2:** Short press Receiver power button and hear beep sound to turn on.
- Step3:** Long press Receiver power button for 2 seconds, after hearing beep sound again and the LED indicator keep fast flashing.
- Step4:** Short press Transmitter power button within 10 seconds, the LED indicator of Transmitter keep flashing, and hearing a long beep sound from the Receiver, means pairing successfully.

Working Principle

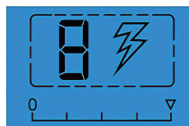
- * Long press Power button of the transmitter for 2 seconds to turn on/off. Short press Receiver power button and hear beep sound to turn on/off.
- * If your dog walks out of the signal boundary of the transmitter, the Receiver will beep for 3 times, then start to shock continuously for 3 minutes, pause for 1 minute and start to shock for 3 minutes alternately until the dog back into the signal boundary.
- * When you don't want the dog to escape your villa, put the paired Receiver on your dog, and place the Transmitter in a proper position at the villa, adjust the proper distance.

Wireless Fence & Shock Function

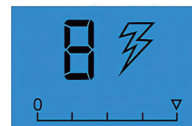
The following data is test base on the transmitter is at 1m/3.28ft and receiver at 0.2m/0.65ft height, and it is only for reference. Some weather and surrounding environmental disturbances (such

as the WiFi intensity, or other wireless signal) may cause little deviation between the actual data and the parameters listed in the form below. Indoors or condition with many obstacles, the distance will be greatly shortened.

Wireless Fence Function



Wireless Fence Function On



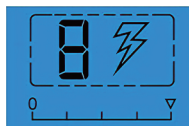
Wireless Fence Function Off

Boundary width Level	Radius (M)
1	40-60
2	80-120
3	140-160
4	200-220

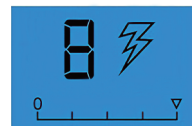
- * You could adjust 1-4 boundary levels by press the fence setting button.
- * Long press the Fence setting button of the Transmitter for 2 seconds, the dotted line box of the LCD screen keep flashing and hear the Receiver beep sound, means the wireless fence function is ON.
- * Long press the Fence setting button of the Transmitter for 2 seconds again, the dotted line box of the LCD screen stop flashing and hear the Receiver beep sound, means the wireless fence function is OFF.

as the WiFi intensity, or other wireless signal) may cause little deviation between the actual data and the parameters listed in the form below. Indoors or condition with many obstacles, the distance will be greatly shortened.

Wireless Fence Function



Wireless Fence Function On



Wireless Fence Function Off

Boundary width Level	Radius (M)
1	40-60
2	80-120
3	140-160
4	200-220

- * You could adjust 1-4 boundary levels by press the fence setting button.
- * Long press the Fence setting button of the Transmitter for 2 seconds, the dotted line box of the LCD screen keep flashing and hear the Receiver beep sound, means the wireless fence function is ON.
- * Long press the Fence setting button of the Transmitter for 2 seconds again, the dotted line box of the LCD screen stop flashing and hear the Receiver beep sound, means the wireless fence function is OFF.

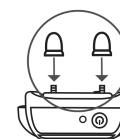
Shock Function

- * You could adjust the 0-8 shock levels (0 Means Off) by press the Shock level button.
- * If your dog walks out of the signal boundary of the transmitter, the Receiver will beep for 3 times, then start to shock continuously for 3 minutes, pause for 1 minute and start to shock for 3 minutes alternately until the dog back into the signal boundary.
- * If your dog back into the signal boundary within 3 seconds after the Receiver makes beep sound, the shock function will not be triggered.

Notes:

1. In the effective distance range, the Transmitter can be set to turn on the wireless fence function or turn off the wireless fence function if the Receiver is powered on.
2. In the effective distance range, if the Receiver is powered on, you could press the power button for 2 seconds of the Transmitter to turn off the wireless fence function too.

How to Wear Receiver



Step1: Choose the proper contact points and conductive silicone caps. Please make sure to use the conductive silicone set, this will protect the dog's skin to a certain extent.



Step2: Put the Receiver on dog's neck.



Step3: Adjust the belt collar, make your dog comfortable.

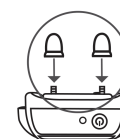
Shock Function

- * You could adjust the 0-8 shock levels (0 Means Off) by press the Shock level button.
- * If your dog walks out of the signal boundary of the transmitter, the Receiver will beep for 3 times, then start to shock continuously for 3 minutes, pause for 1 minute and start to shock for 3 minutes alternately until the dog back into the signal boundary.
- * If your dog back into the signal boundary within 3 seconds after the Receiver makes beep sound, the shock function will not be triggered.

Notes:

1. In the effective distance range, the Transmitter can be set to turn on the wireless fence function or turn off the wireless fence function if the Receiver is powered on.
2. In the effective distance range, if the Receiver is powered on, you could press the power button for 2 seconds of the Transmitter to turn off the wireless fence function too.

How to Wear Receiver



Step1: Choose the proper contact points and conductive silicone caps. Please make sure to use the conductive silicone set, this will protect the dog's skin to a certain extent.



Step2: Put the Receiver on dog's neck.



Step3: Adjust the belt collar, make your dog comfortable.