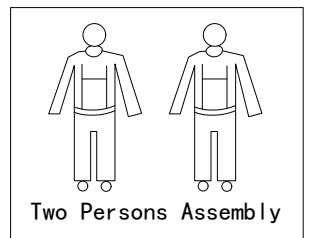
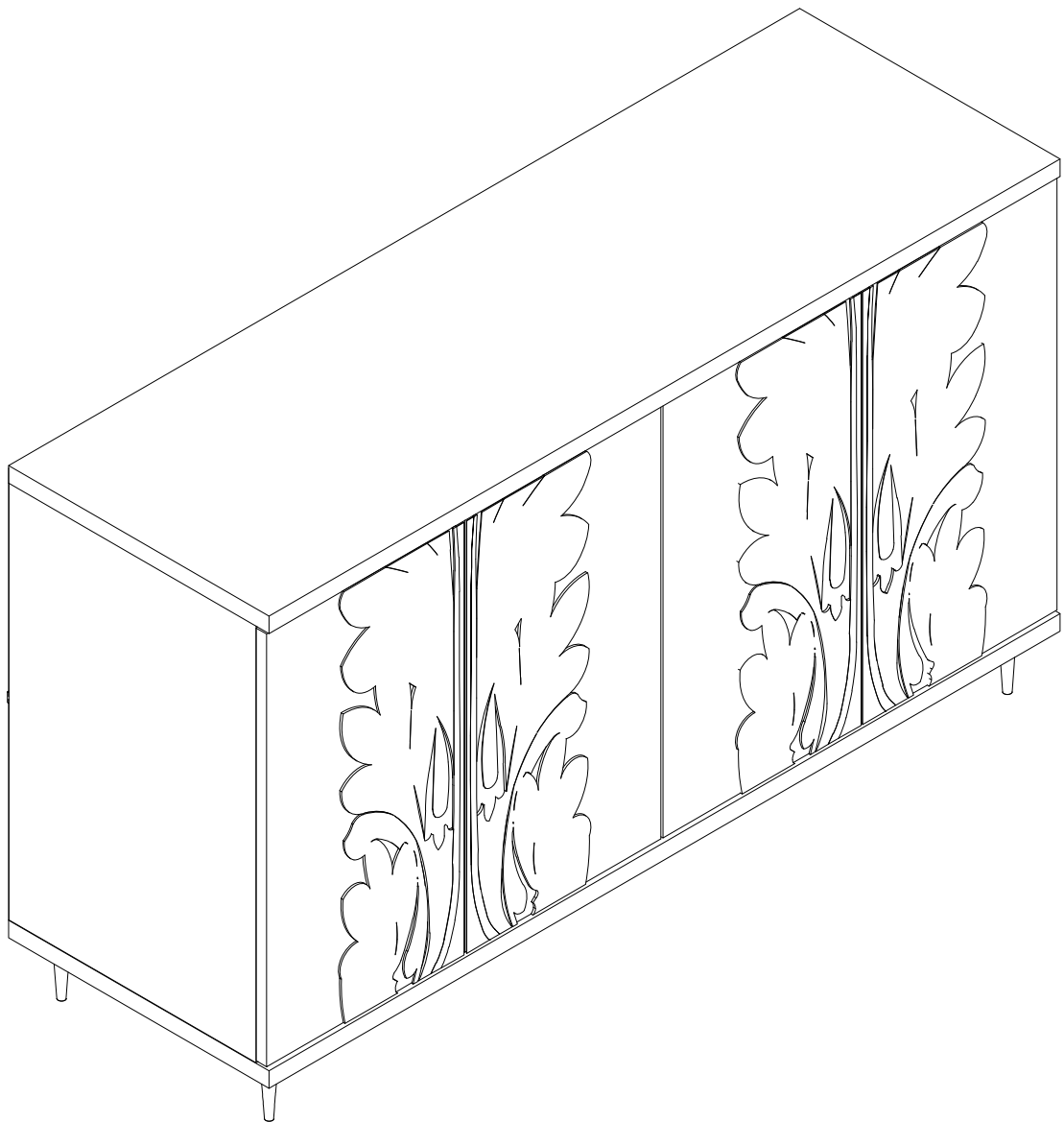
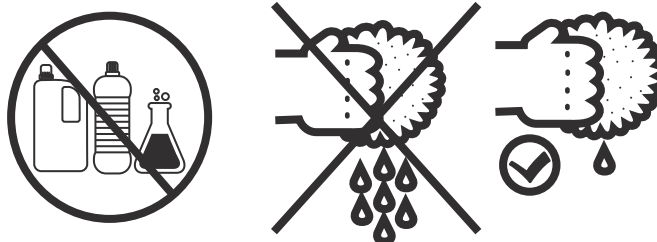
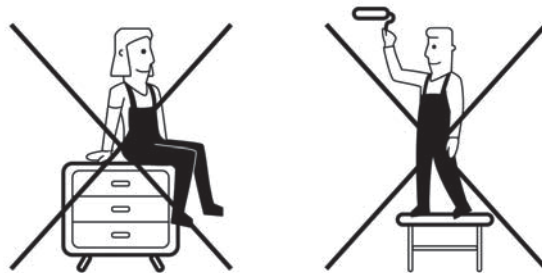
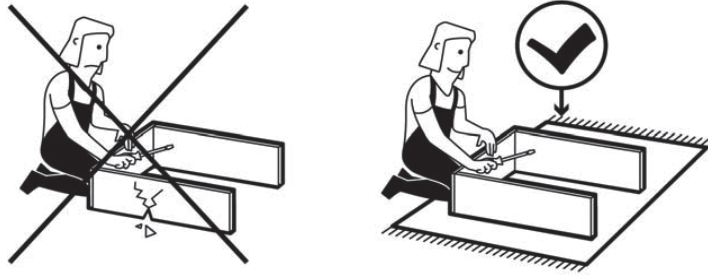
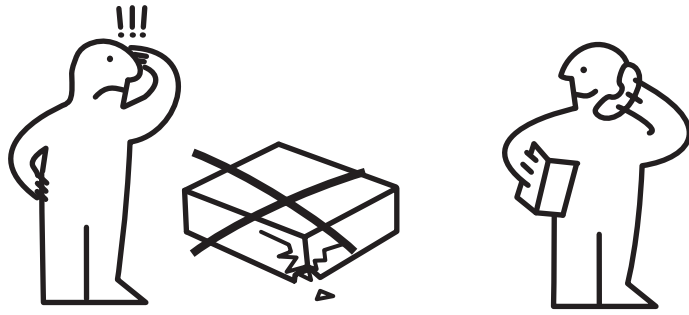
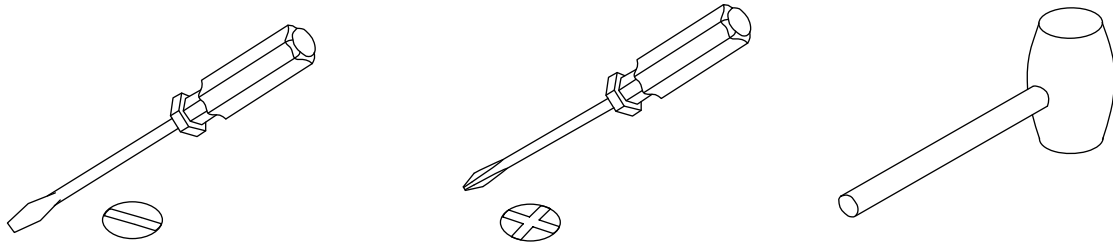


ASSEMBLY INSTRUCTIONS



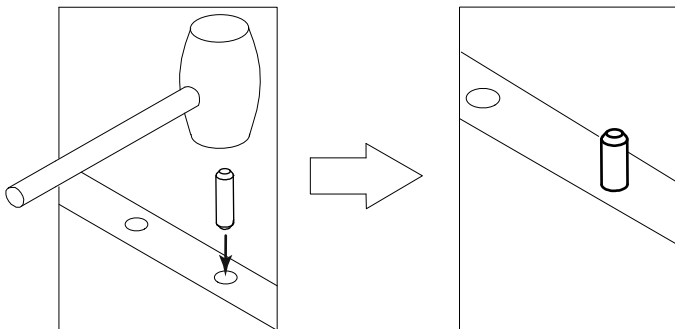


ASSEMBLY TOOLS REQUIRED (NOT INCLUDED)



- * Before discarding packing materials, please check all parts and hardware are presented.
- * Please follow the instructions closely.
- * After few days of initial assembly, the product may has acclimated to new environment, please tighten all hardware again.

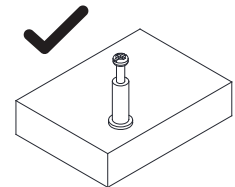
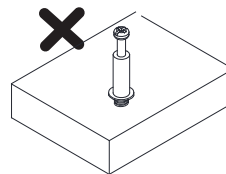
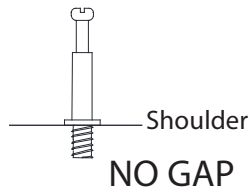
Dowel Installation



Gently tap dowel into hole with rubber mallet.

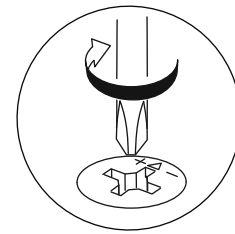
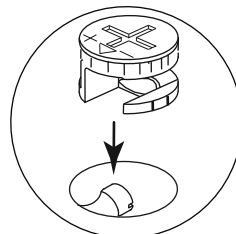
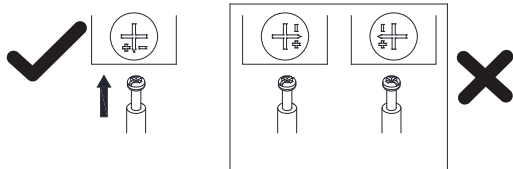
CAM-LOCK

Tighten until shoulder is flush with panel. Do not overtighten or undertighten

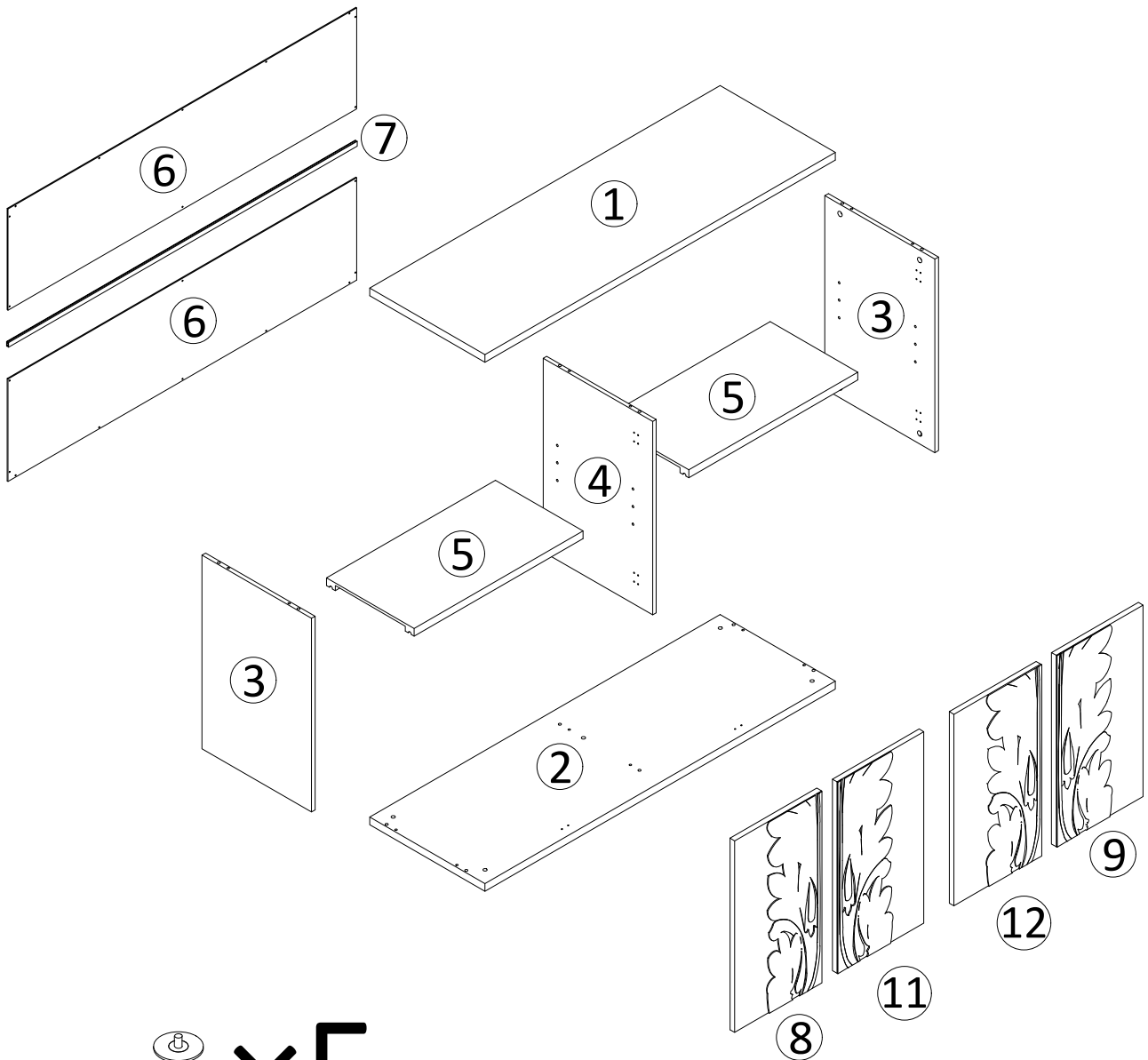


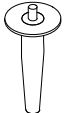
WHEN FITTING CAMS

ENSURE STARTING POSITION IS CORRECT BEFORE YOU INSERT CONNECTING CAM-PILLAR
TURN CLOCKWISE UNTIL SECURE



Laying out all the parts and hardware and identifying each part as shown below. It may help you when you assemble the item.

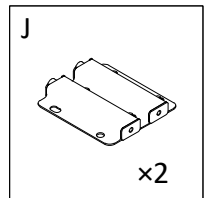
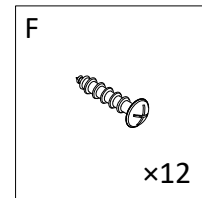
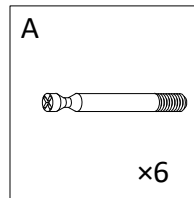
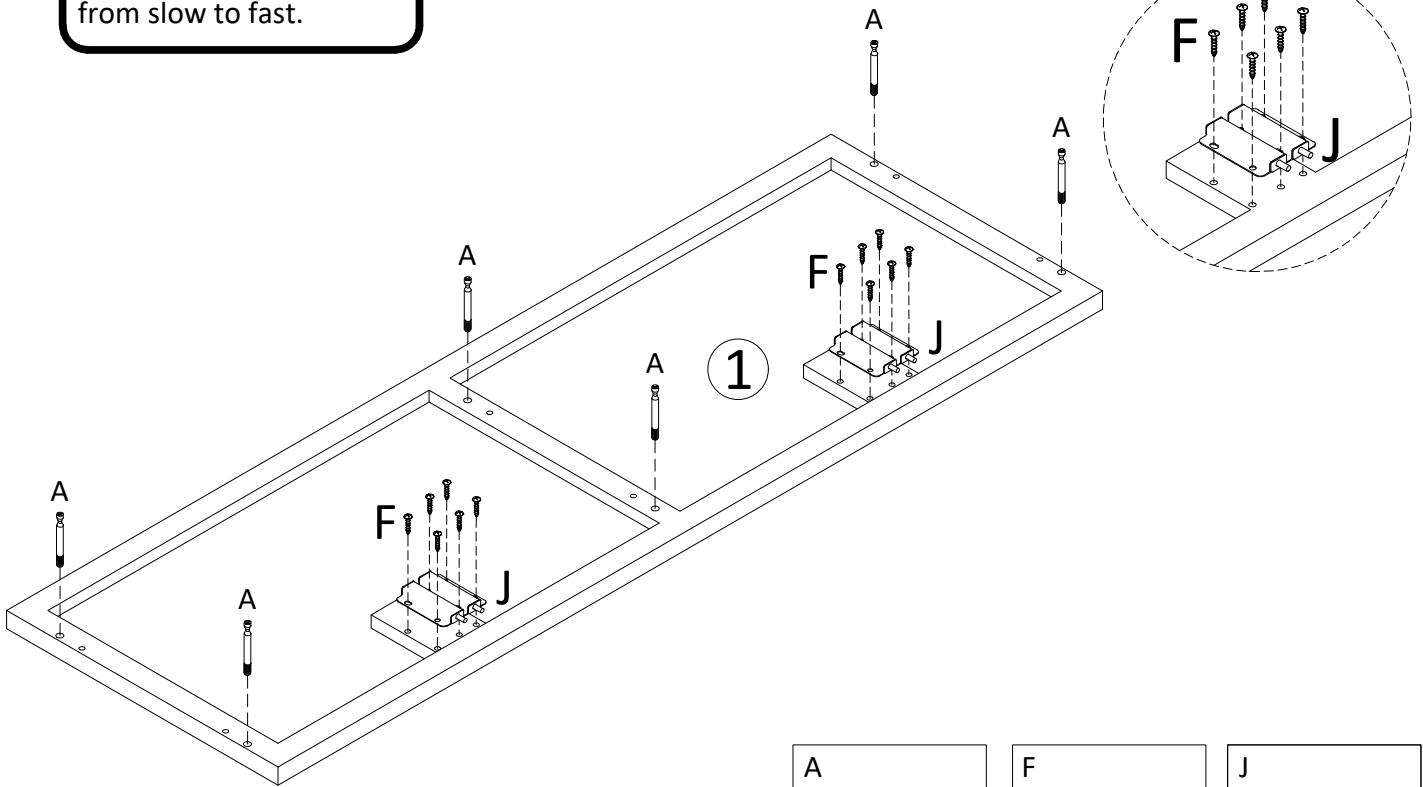


⑩  x5

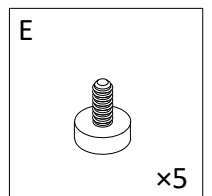
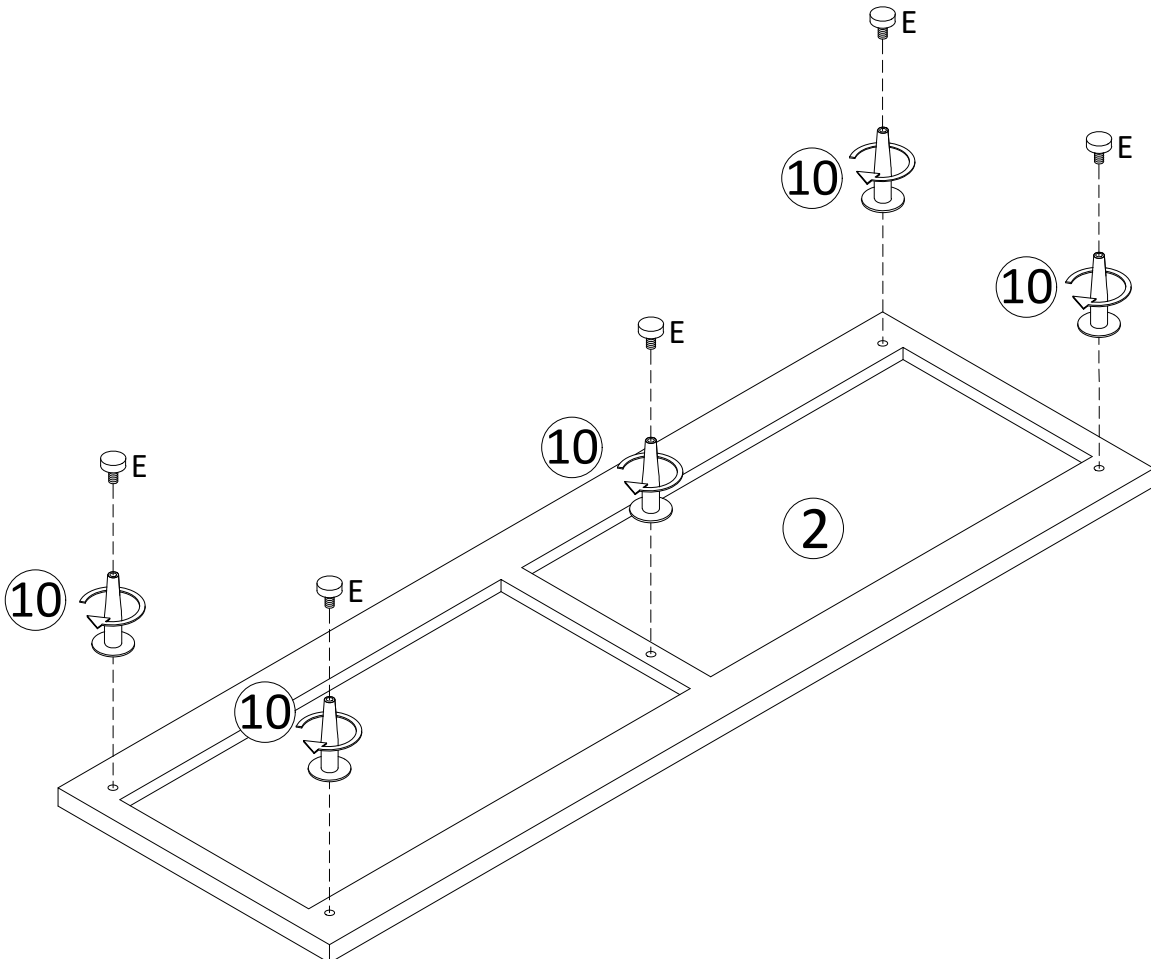
① x1	② x1	③ x2	④ x1	⑤ x2	⑥ x2
⑦ x1	⑧ x1	⑨ x1	⑩ x5	⑪ x1	⑫ x1

1

Turn the screws vertically from slow to fast.

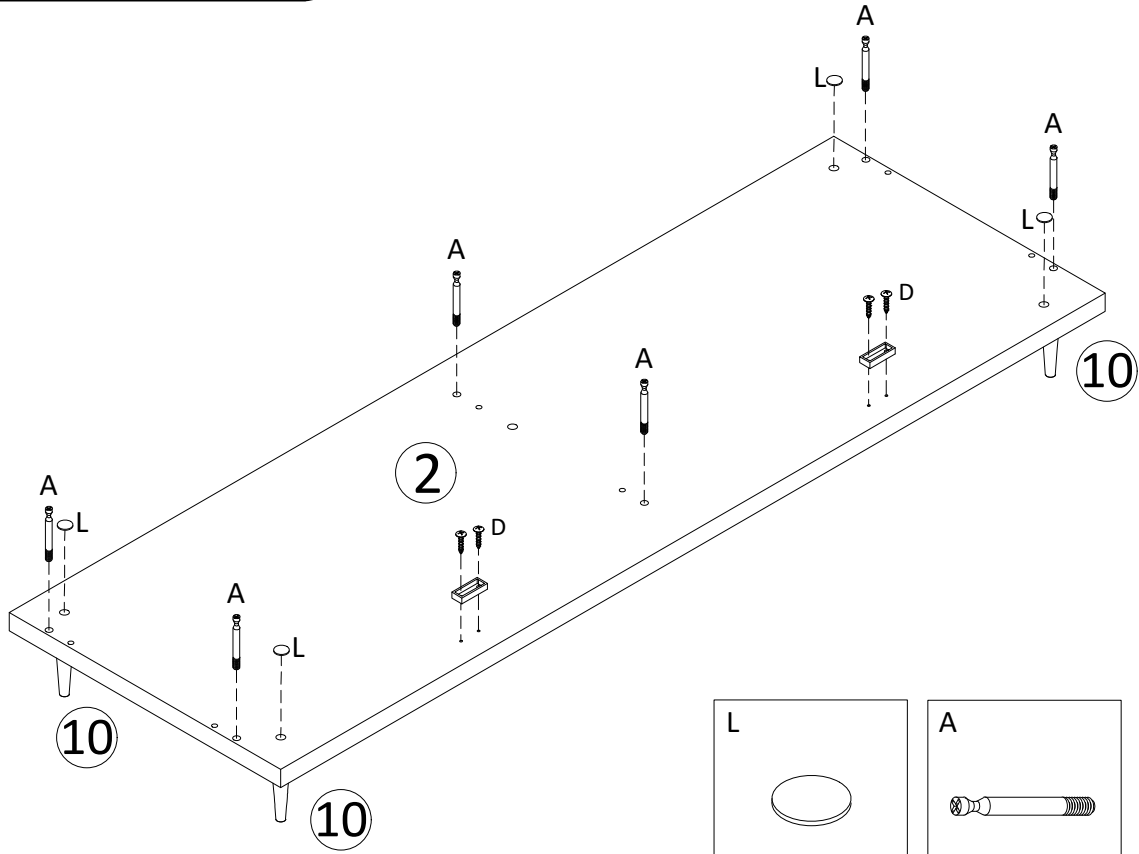


2

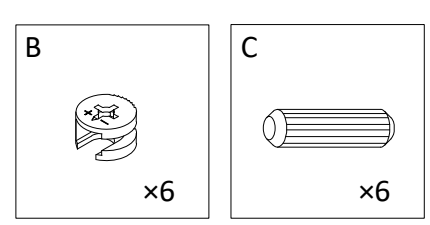
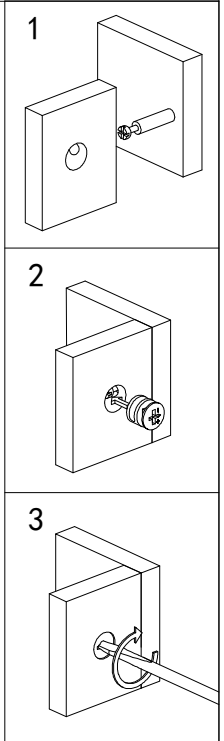
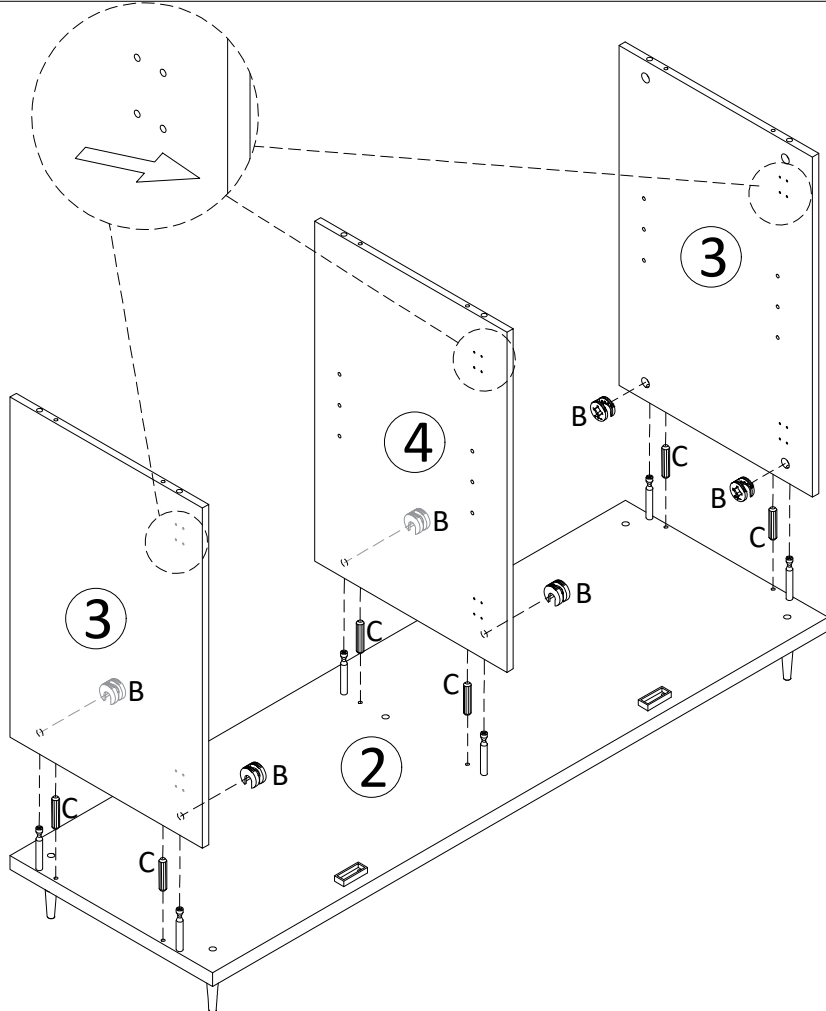


3

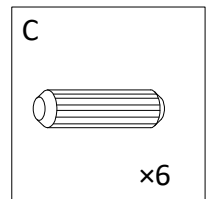
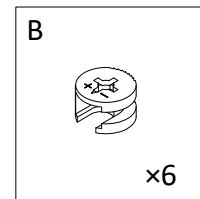
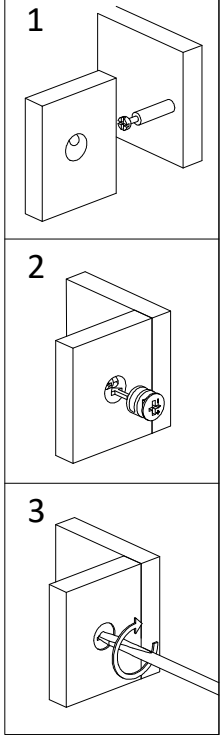
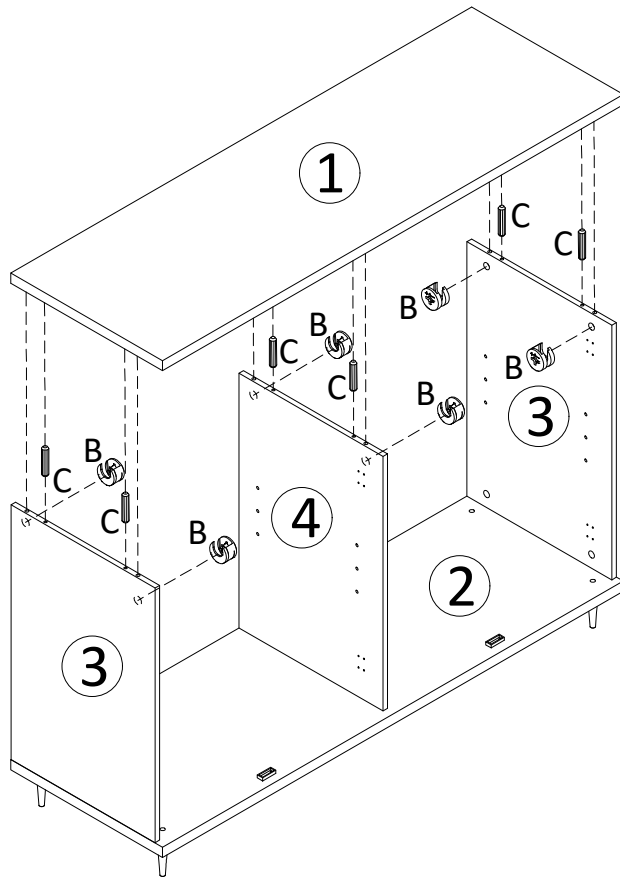
Turn the screws vertically from slow to fast.



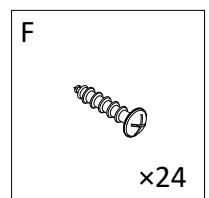
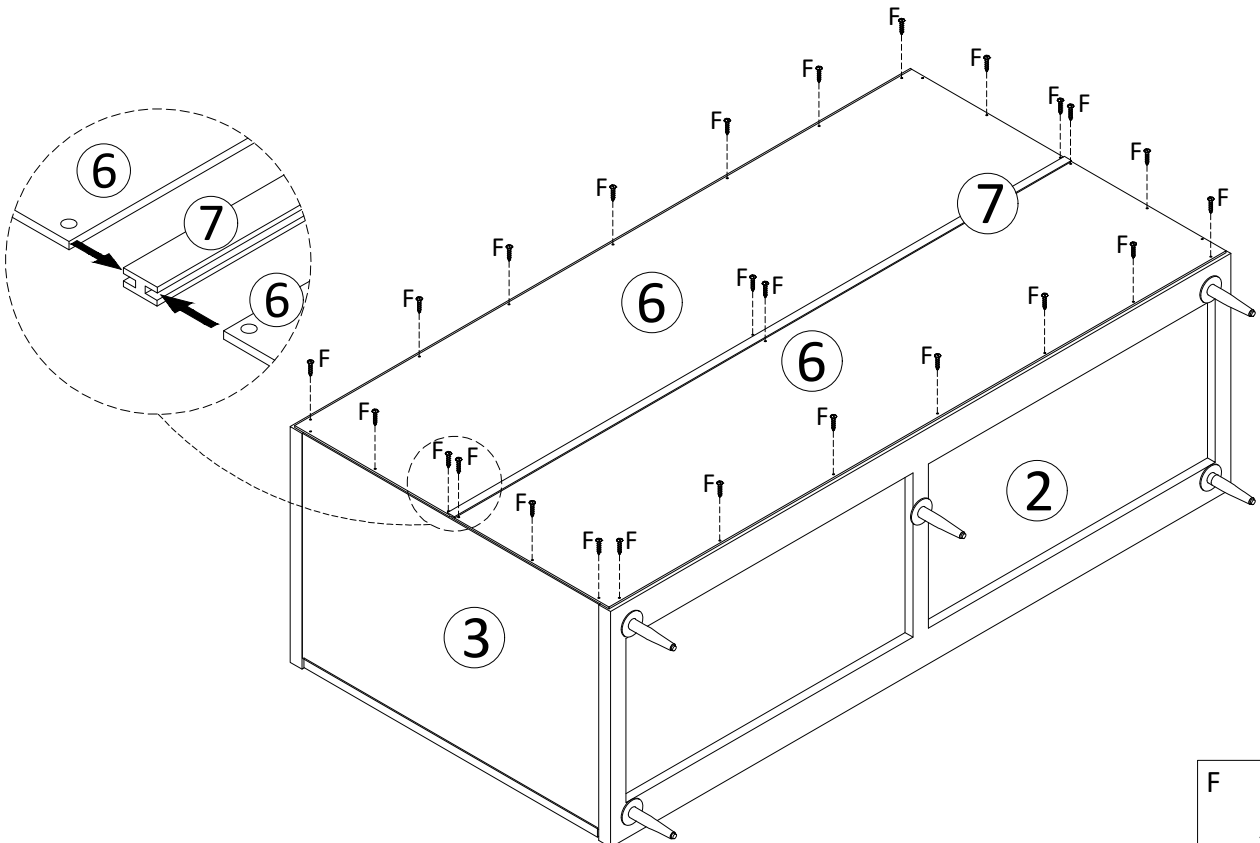
4



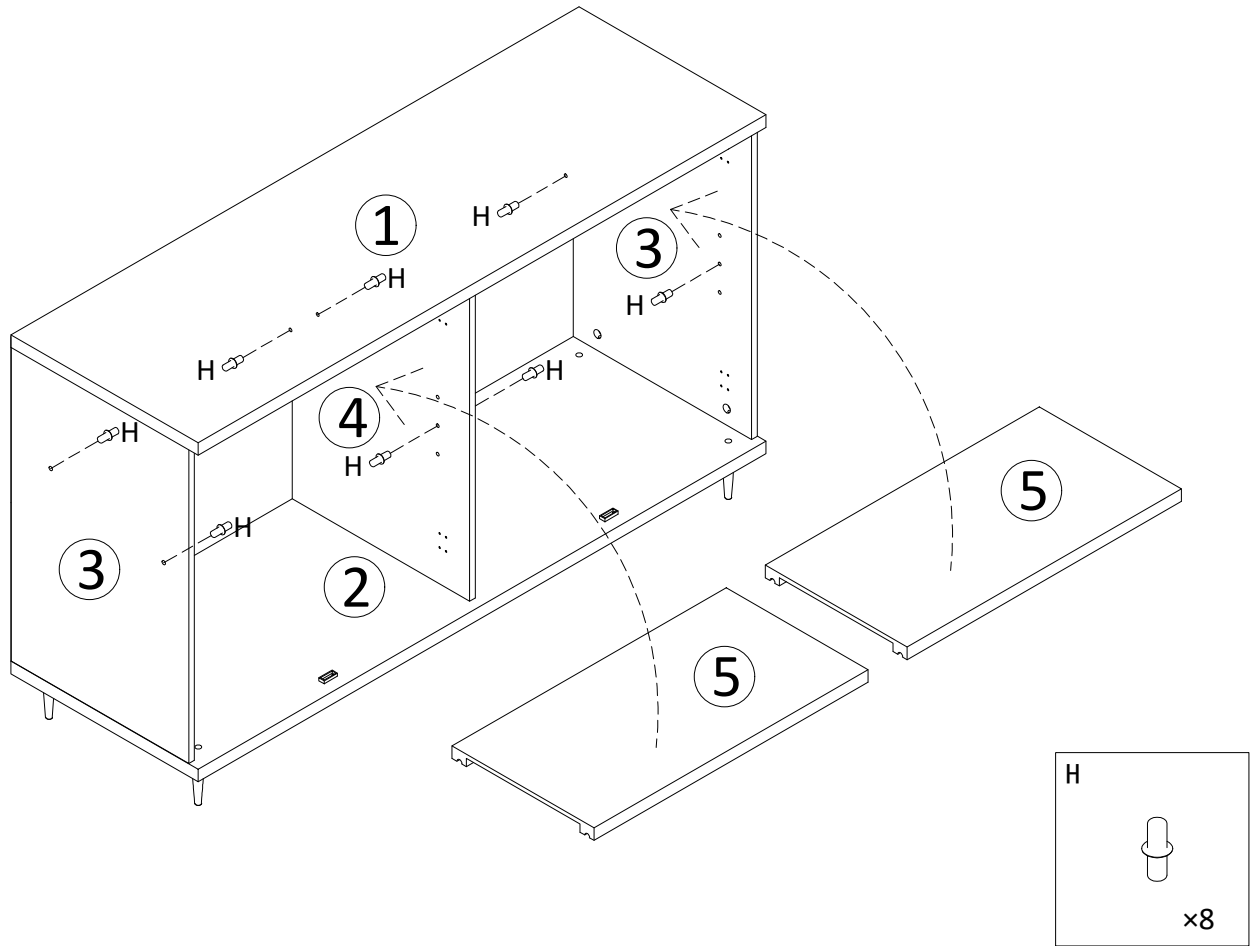
5



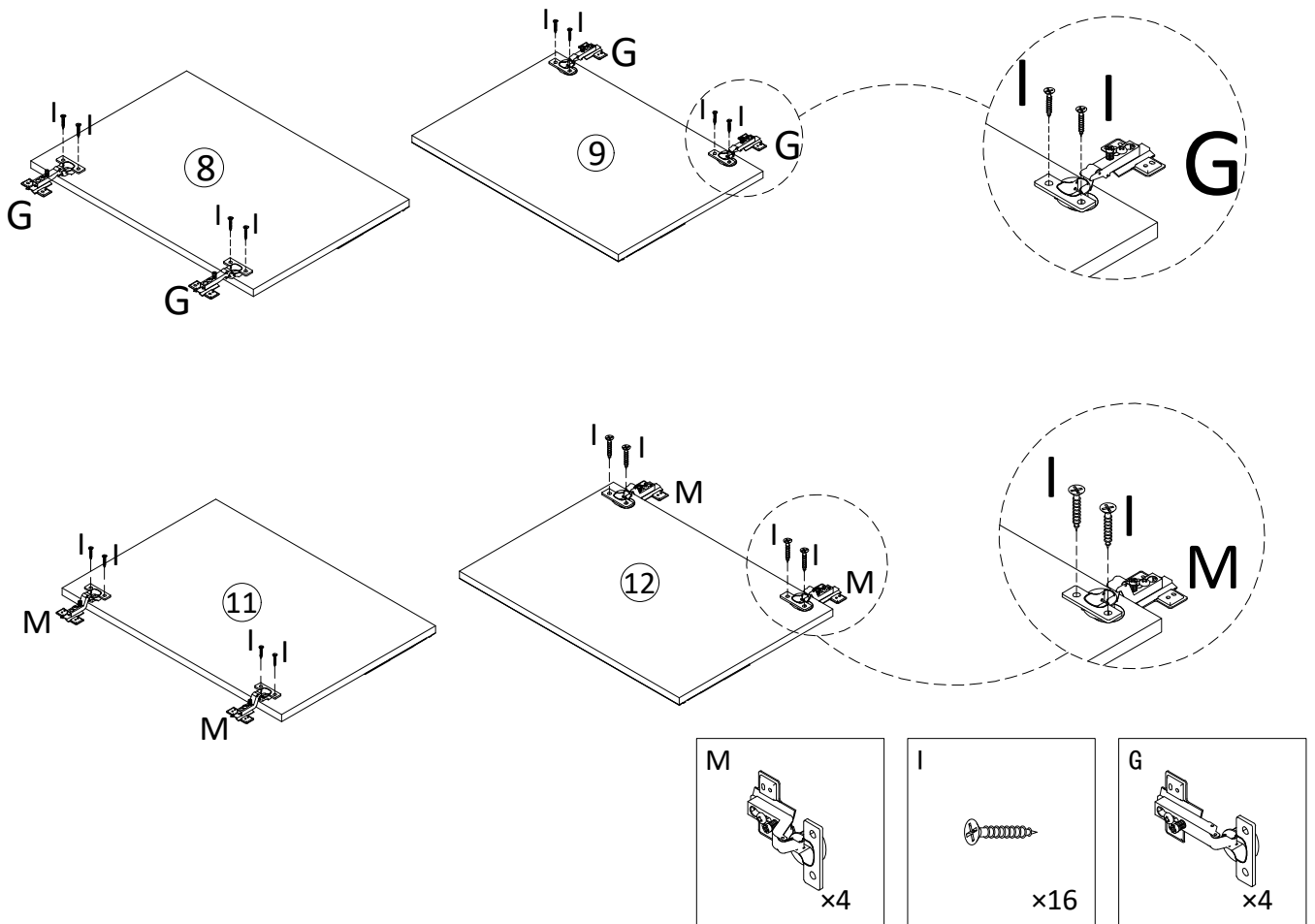
6



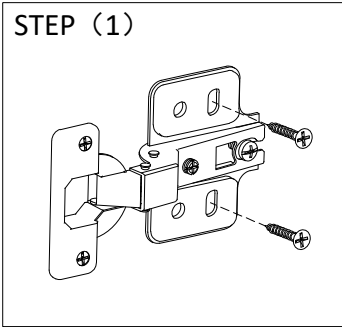
7



8

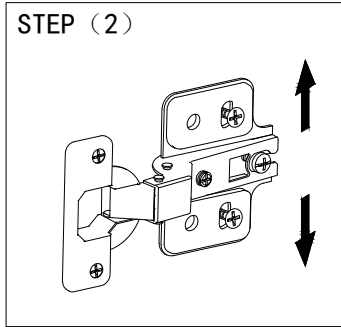


STEP (1)



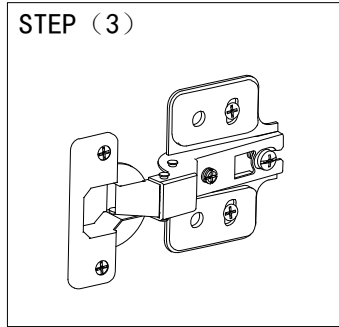
Tips: Turning the screw to approx 50% tightness, don't be fully tight.

STEP (2)



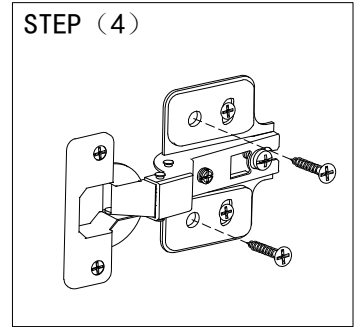
Tips: Moving the hinges up or down appropriately to adjust the gap between the door and cabinet top and bottom.

STEP (3)

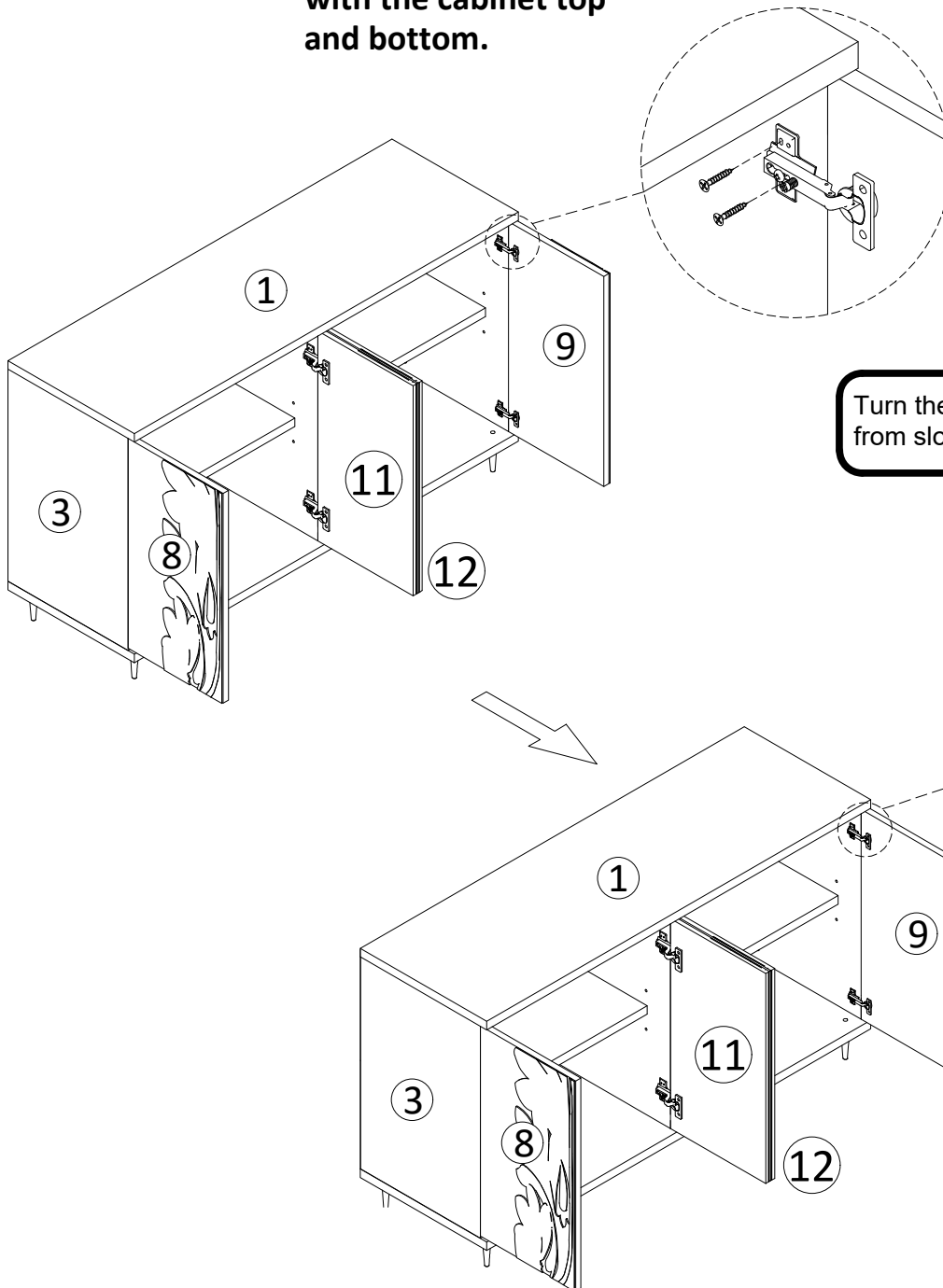


Tips: Tightening the screws completely.

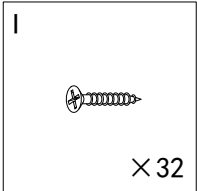
STEP (4)



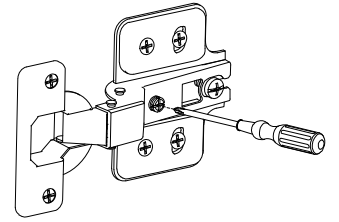
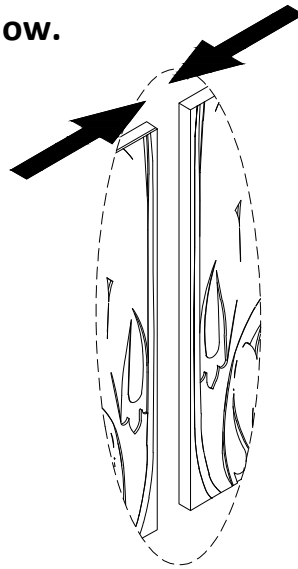
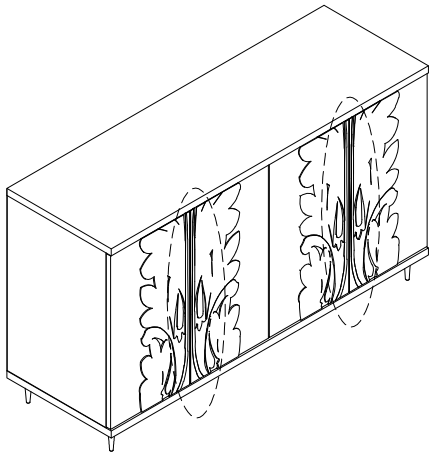
Tips: Tightening the other screws completely.



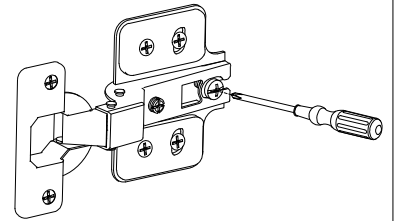
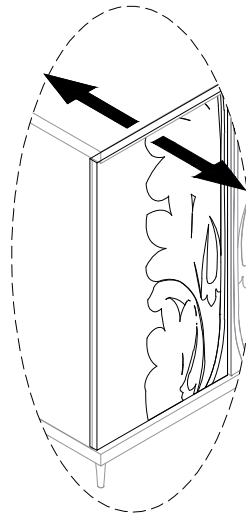
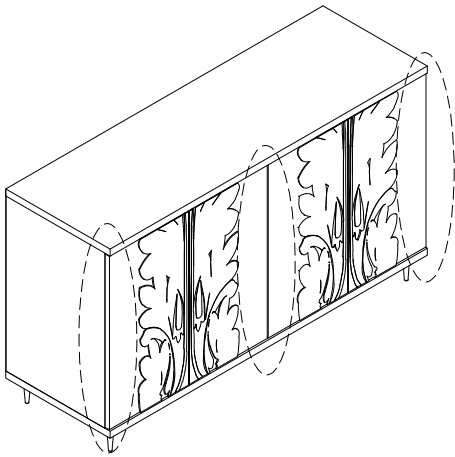
Turn the screws vertically from slow to fast.



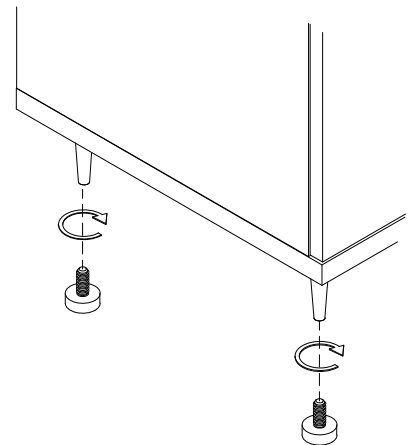
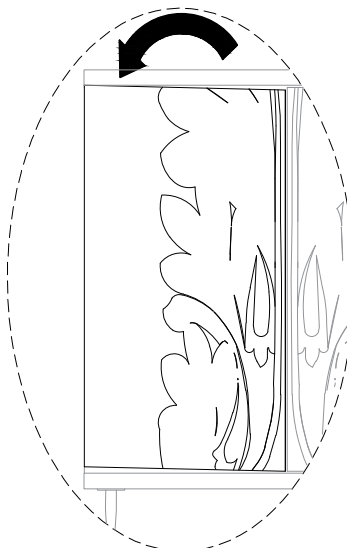
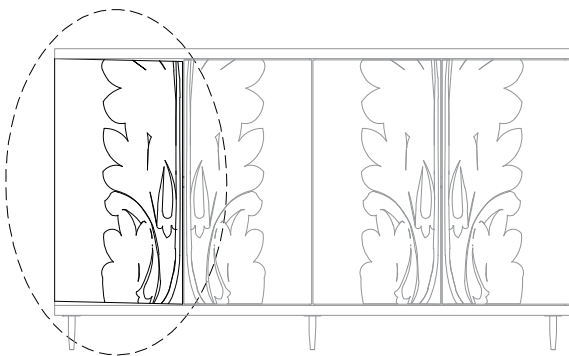
10 Tips: If the gap between the doors with the partition panel is too far or close, please turning the screw as shown below.



Tips: Adjusting the screw as shown in the following picture can make the door move forward or backward.

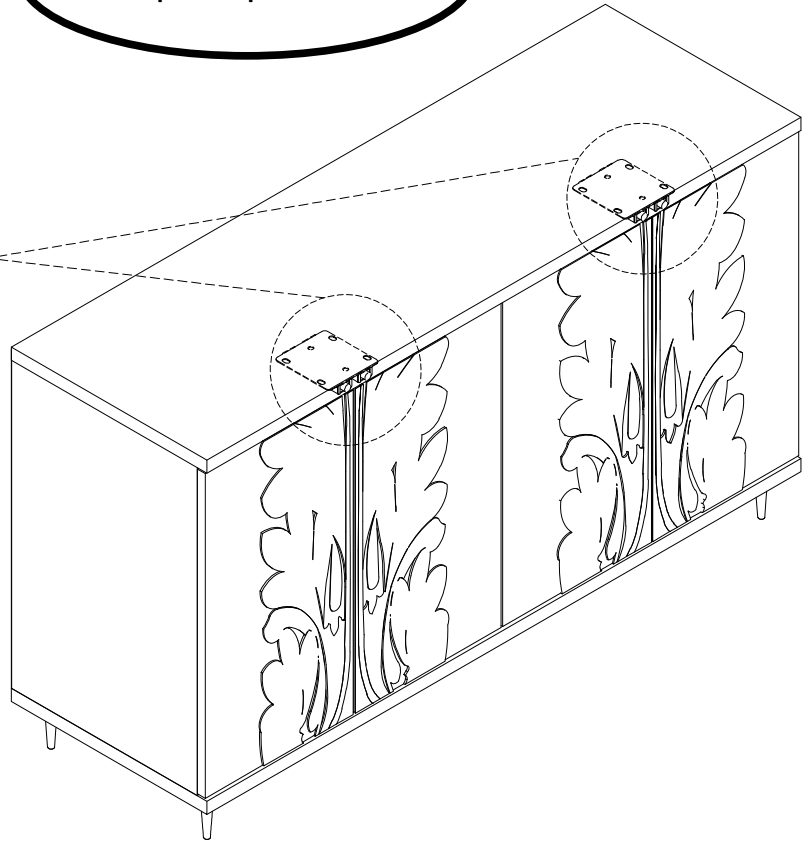
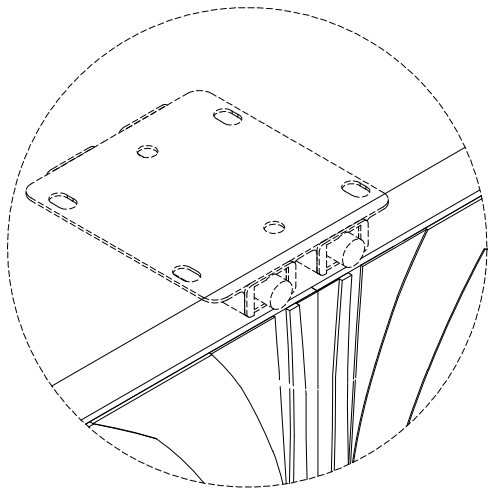


Tips: Adjusting the levelers appropriately underneath the bottom of the foot can make the gaps between the door and frames of cabinet even.



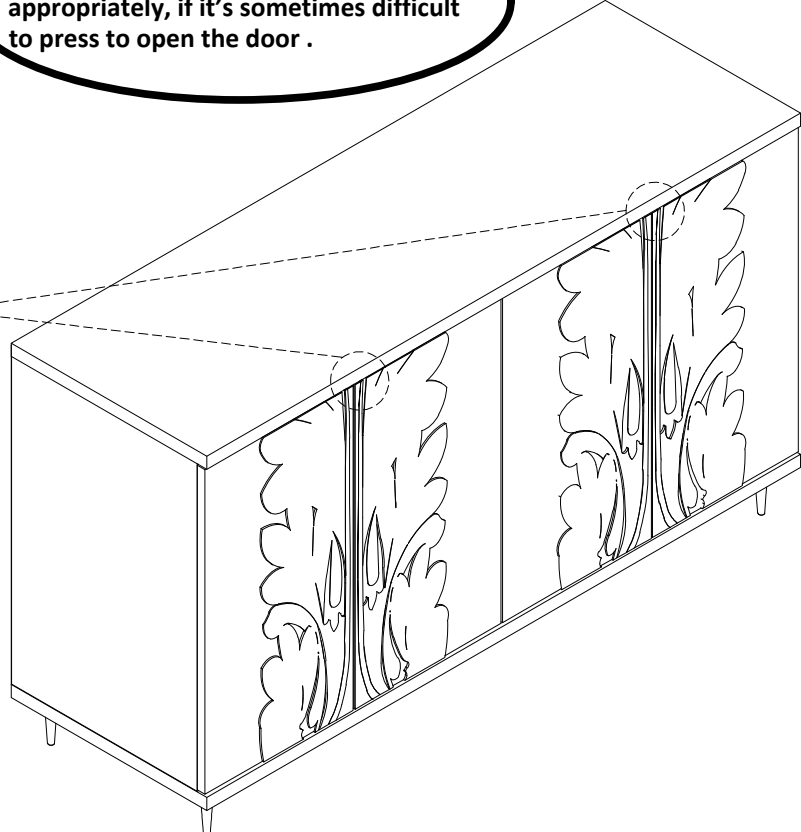
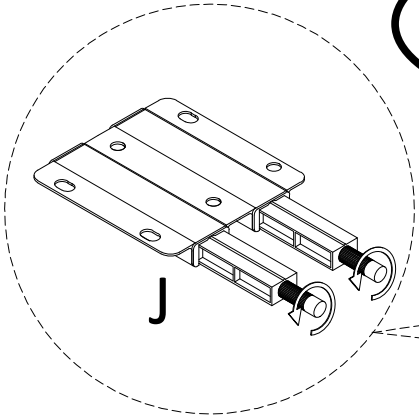
11

Note: please press the door at the circled spot to open the door.

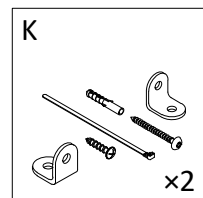
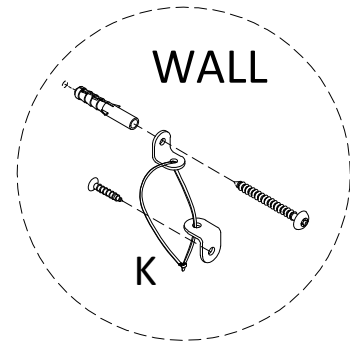
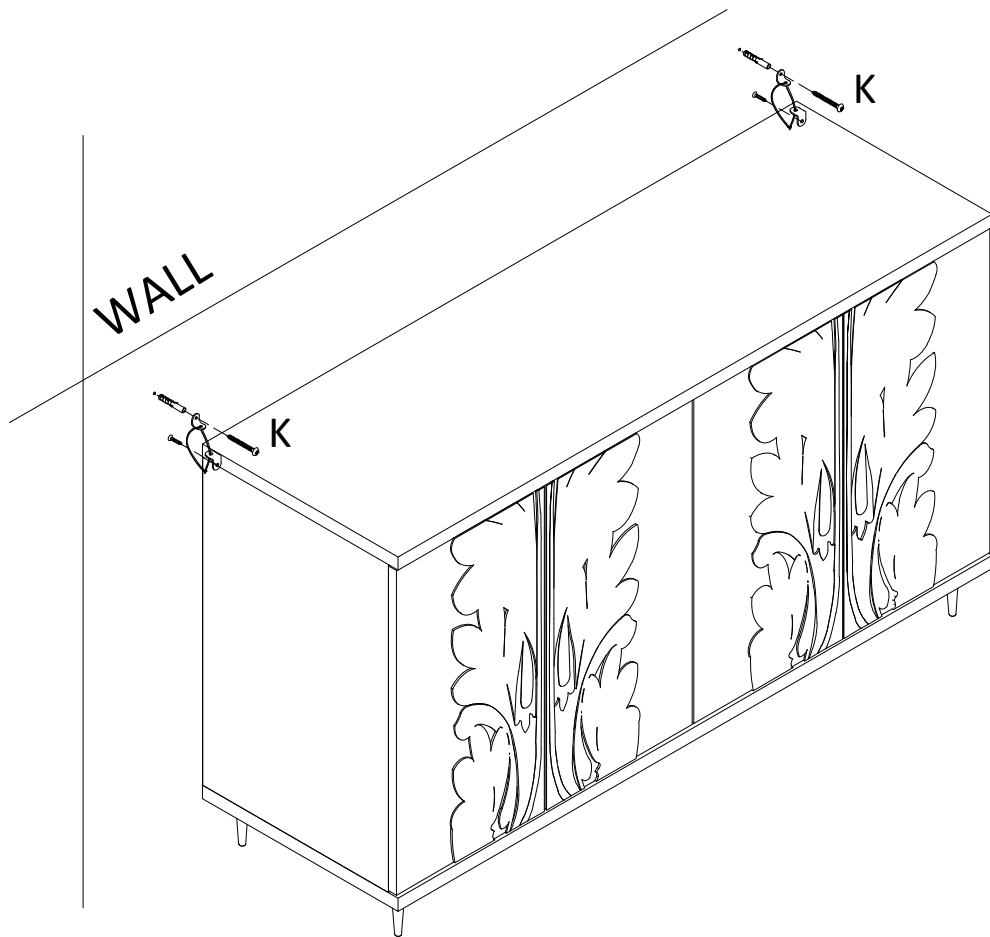


12

Tips: Turning the plastic nut of part "M" appropriately, if it's sometimes difficult to press to open the door .



13



14

