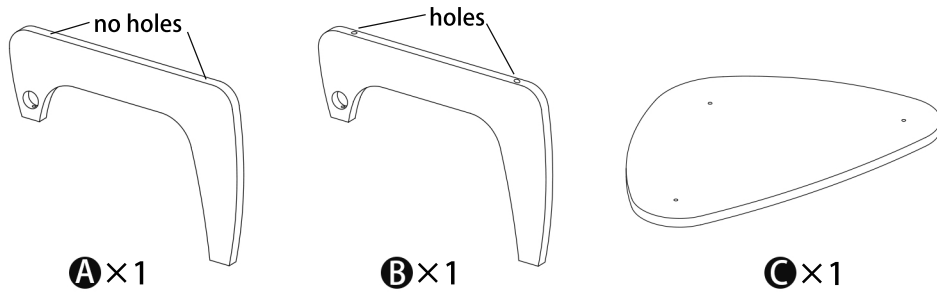
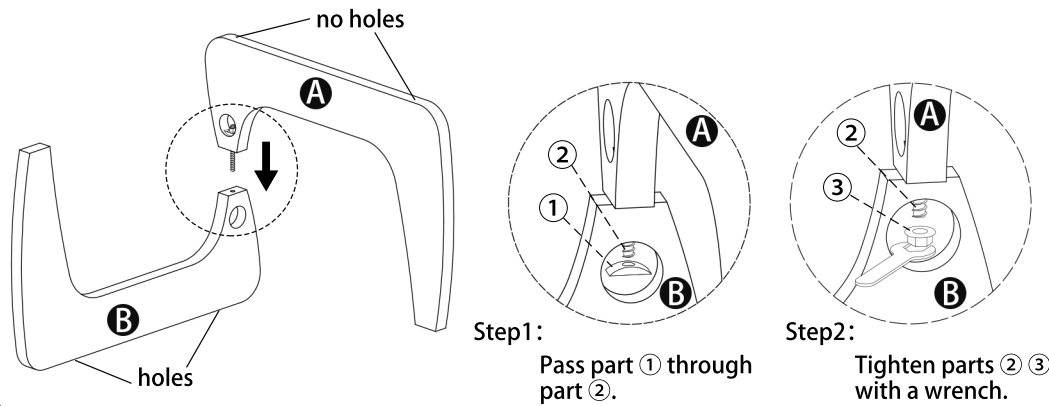
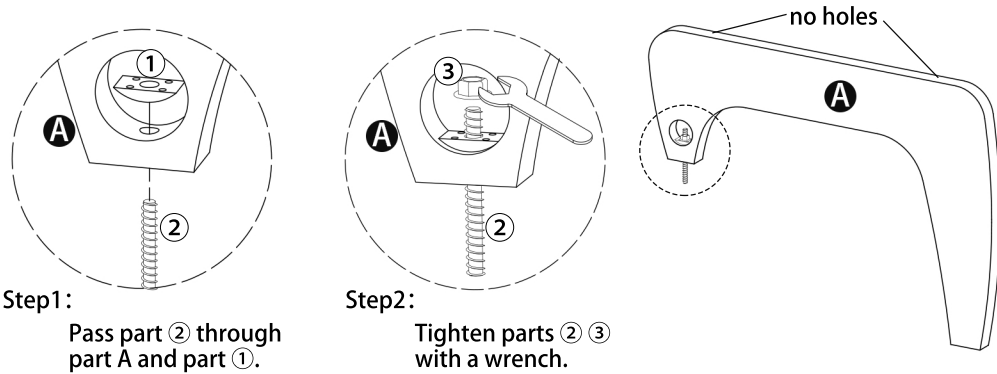


ASSEMBLY INSTRUCTION

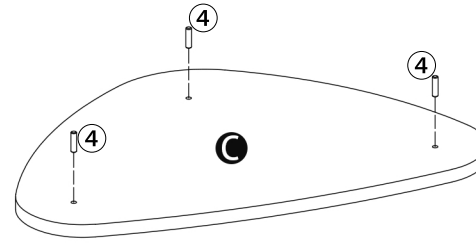


Hardware Parts								
	① × 2	② × 1	③ × 2	④ × 3	⑤ × 3	⑥ × 12	⑦ × 3	⑧ × 1

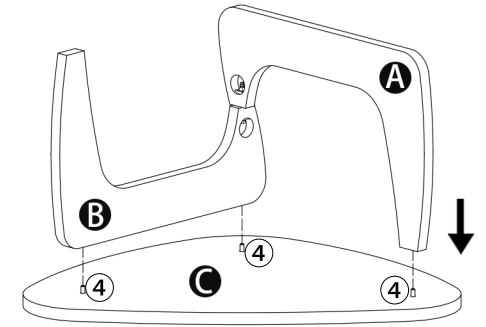
Installation Steps



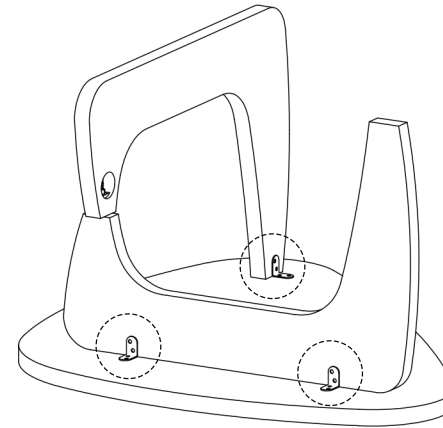
Installation Steps



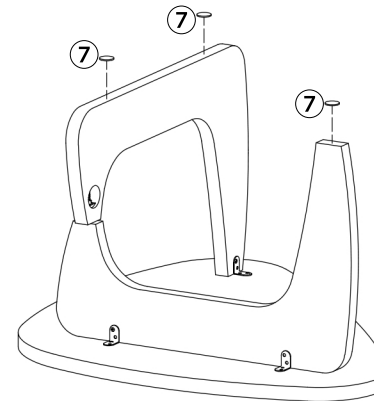
Insertion of parts ④.



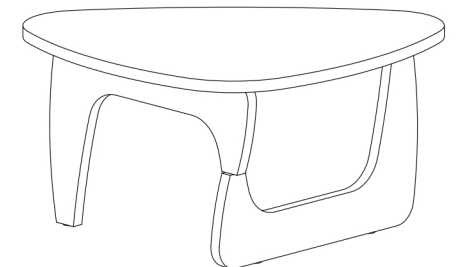
Join boards A B C with parts ④.



Mounting parts ⑤.



Glue on the foot mats.



Flip Front.