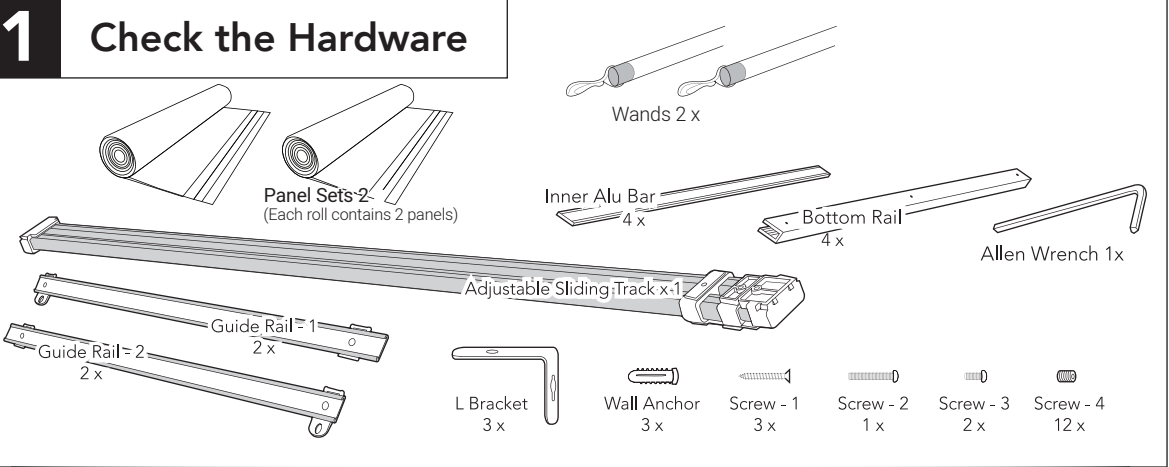


DOUBLE RAIL SLIDING PANEL SYSTEM INSTRUCTION

PREPARATION

1 Check the Hardware

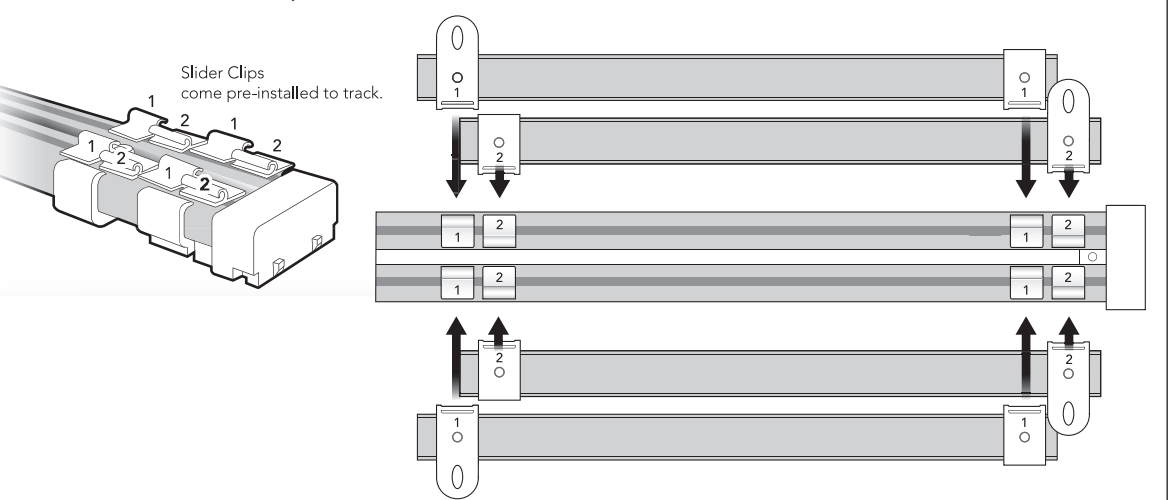


2 Gather other necessary tools



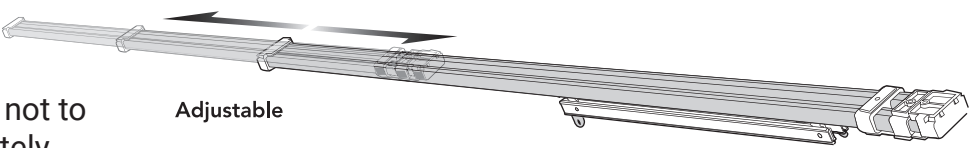
3 Getting Started

Snap the guide rails into the slider clips. Be sure to follow the correct number sequence. Make sure the Velcro side faces the front (the fabric panels will attach to this velcro).



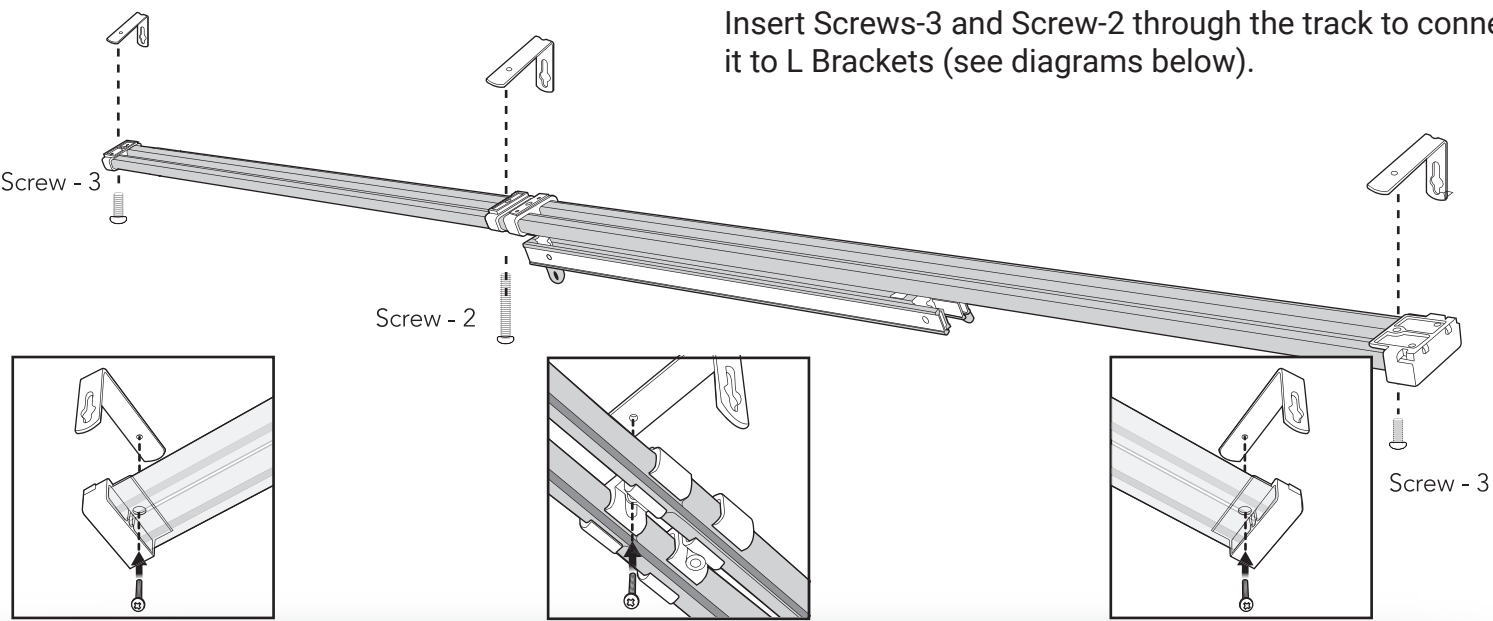
4 Adjusting

Adjust the panel track to the width needed. Be careful not to over extend the track and cause it to separate completely.

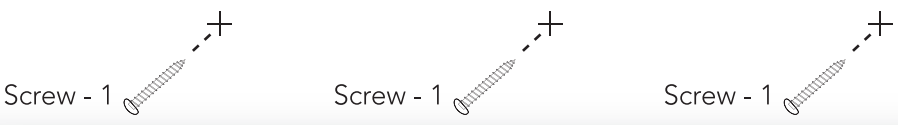


5a Wall Mount

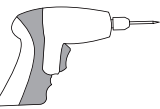
Insert Screws-3 and Screw-2 through the track to connect it to L Brackets (see diagrams below).



Position the track to where you would like to hang it on the wall (using a level is recommended). Mark the screw position of the L Brackets (use the top tip of the L bracket opening, as that is where the track will hang from).

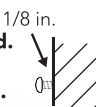


Drill Screws into the wall (using anchors is recommended).

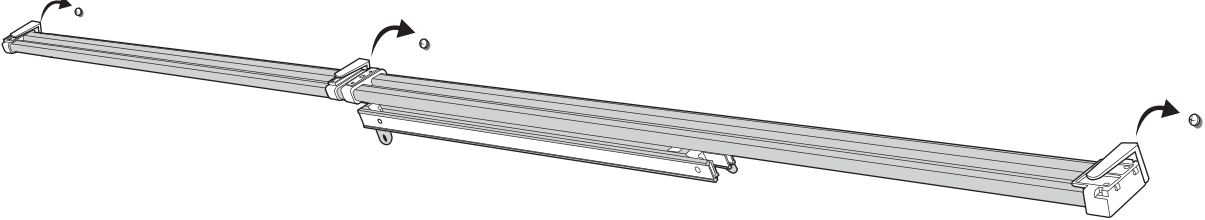


Use 2/8 in drill bit for drilling anchor holes

Note: Do not screw to the end. Leave about 1/8 in. gap to hold the bracket.

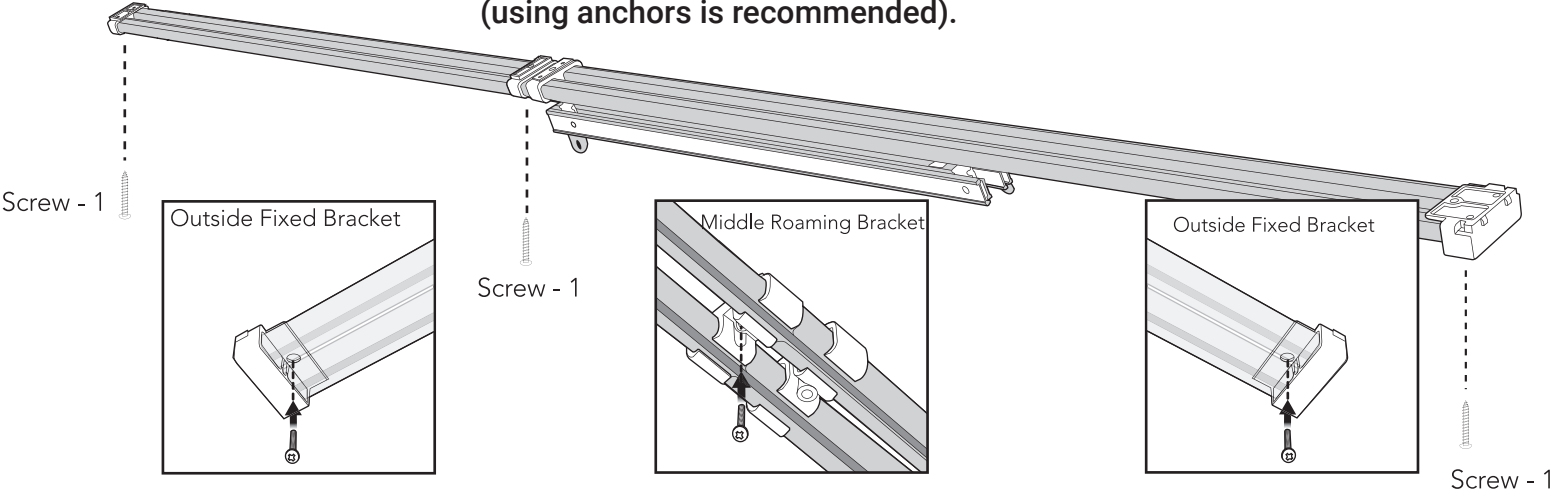


Once screws are in place, hang the track to the wall using L brackets. You may need two people for this step.



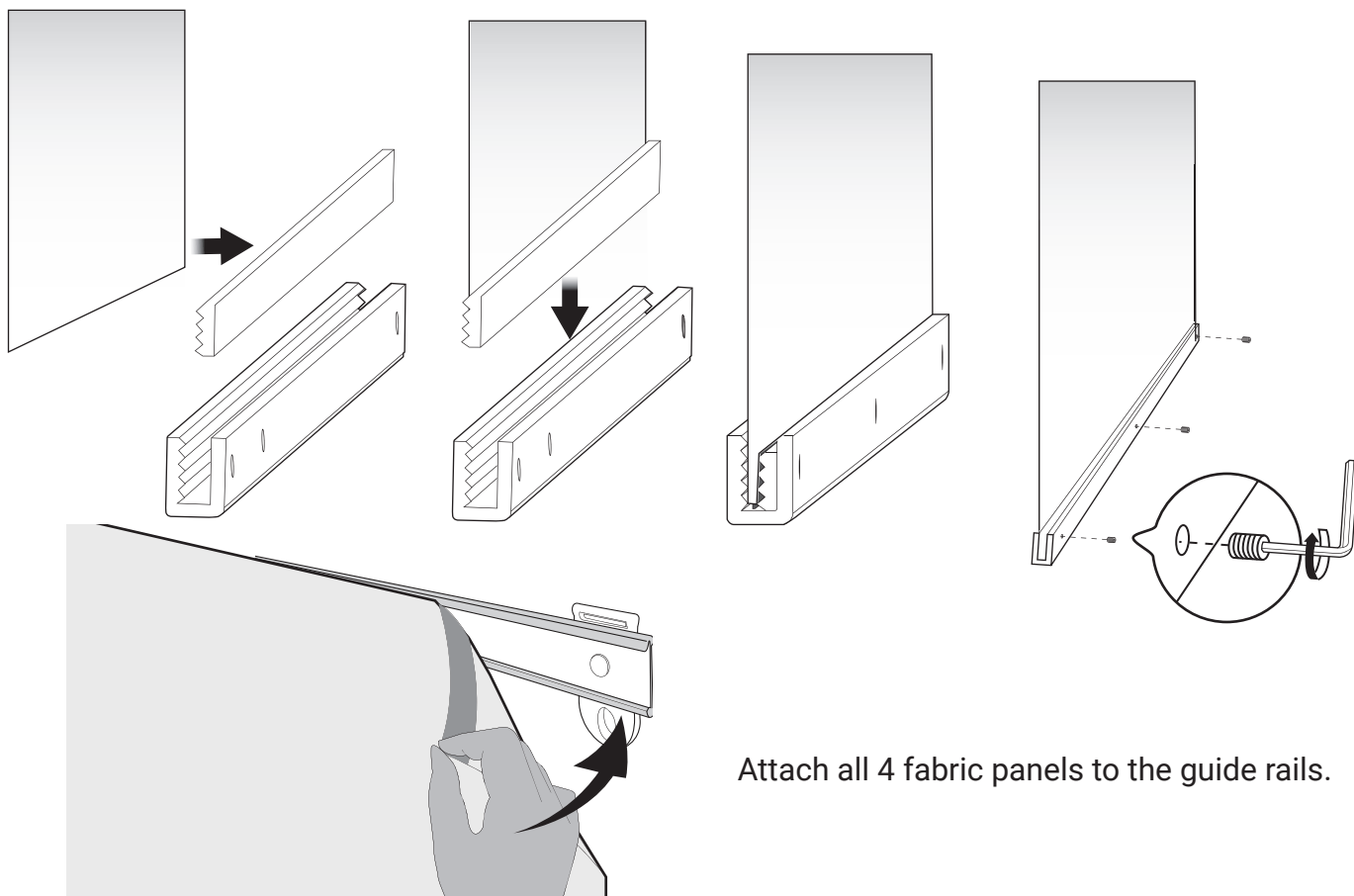
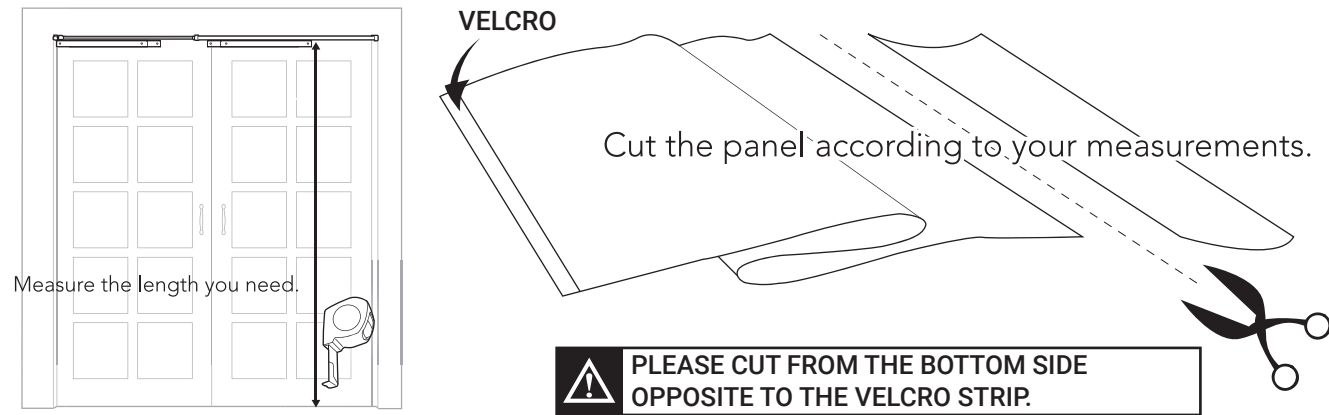
5b Ceiling Mount

Take screw-1 (see step 1) and screw up through the 2 *fixed brackets* (see below) on the outside and one through the *middle roaming bracket* of the head rail up into the ceiling (using anchors is recommended).



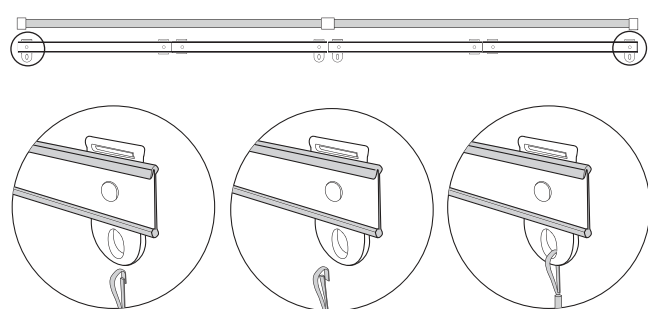
6 Installing Panels

Measure the length needed for the panels. For accuracy, measure from the top of the guide rail down to the floor and subtract 1/4 in. So the fabric does not drag on the floor. Cut the panels along the side opposite to the velcro strip.

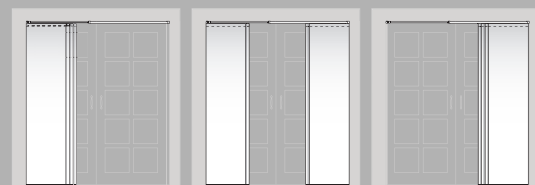


7 Insert wands

Attach 2 wands to the leading and ending guide rails.



How-to-use



3 OPENING OPTIONS
LEFT | CENTER | RIGHT

Ready-Made Products Warranty

Limited One Year Warranty from the Date of Purchase

What is Covered :

- All of our Cordless Roman Shades are warranted against manufacturer defects in materials or workmanship provided that you are the original purchaser of the product, and the product was installed according to our instructions.

What is Not Covered :

- Normal wear and tear.
- Consumer damages caused by accidents, alterations, abuse of the product, exposure to salt air, misuse, or damages from pets or insects.
- Damages resulting from removal and reinstallation in the same or any other window or application, or failure to follow instructions, such as measurement, installation, cleaning, and maintenance.
- Any products that, with the passage of time, has yellowing or cracking of plastic parts
- Wrong measurements are not covered by the warranty and are not refundable.

To report shipping damages :

If damage occurred during shipping, please email support@chicology.com immediately and report within 14 calendar days or else you may be denied for your damaged product.

Obligations to the consumer :

The obligations of Chicology are limited to the repair or replacements of parts or products found to be defective. Chicology will determine if the product is defective or not and may replace the product. If the product is found to have manufacture defects, we will repair or replace the product. Colors do vary from lot to lot, and may not match original product exactly. Discontinued items will be replaced with the most current product of the same price.

Your Rights under State law :

This limited warranty gives you specific legal rights, and you may have other rights, which vary from state to state.