



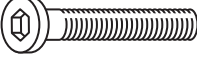



Examine all packaging material for small parts that may have come loose during shipment. Periodic checks are recommended to insure that all components are in proper position, tight and free from damage. Keep this assembly instruction for future reference. Adult assembly is required.

HARDWARE LIST

- A (4) Short Allen Bolts
- B (4) Allen Bolts
- C (6) Long Allen Bolts
- D (14) Metal Washers
- E (14) Spring Washers
- F (1) Allen Wrench

PARTS LIST

- G (5) Feet
- H (1) Foot Ring
- I (1) Seat Base
- J (1) Gas Lift
- K (1) Seat Cushion
- L (1) Seat Back
- M (1) Seat Plate
- N (1) Left Armrest
- O (1) Right Armrest

PART	QTY	HARDWARE	PART	QTY	HARDWARE
A	4		B	4	
C	6		D	14	
E	14		F	1	

STEP 1

Begin assembly by sliding the Foot Ring (H) on to the Gas Lift (J) and placing both onto the Seat Base (I). See **Figure 1**.

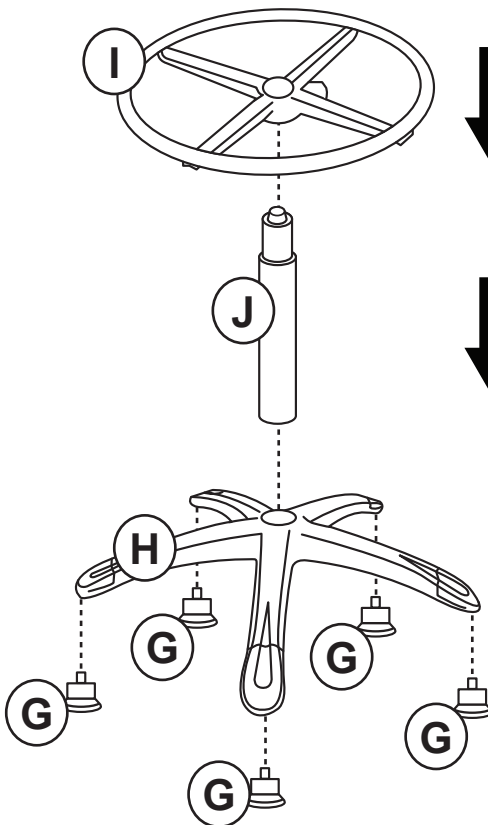
STEP 2

Attach the Feet (G) into bottom end of each leg on the Seat Base (I). See **Figure 1**.

STEP 3

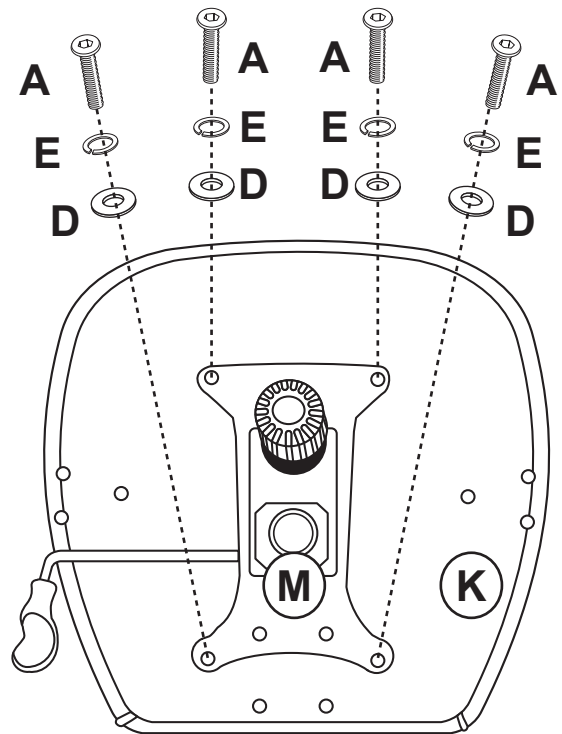
Attach the Seat Plate (M) to the bottom of the Seat Cushion (K) by using 4 Short Allen Bolts (A), 4 Spring Washers (E) and 4 Flat Washers (D). See **Figure 2**.

FIGURE 1



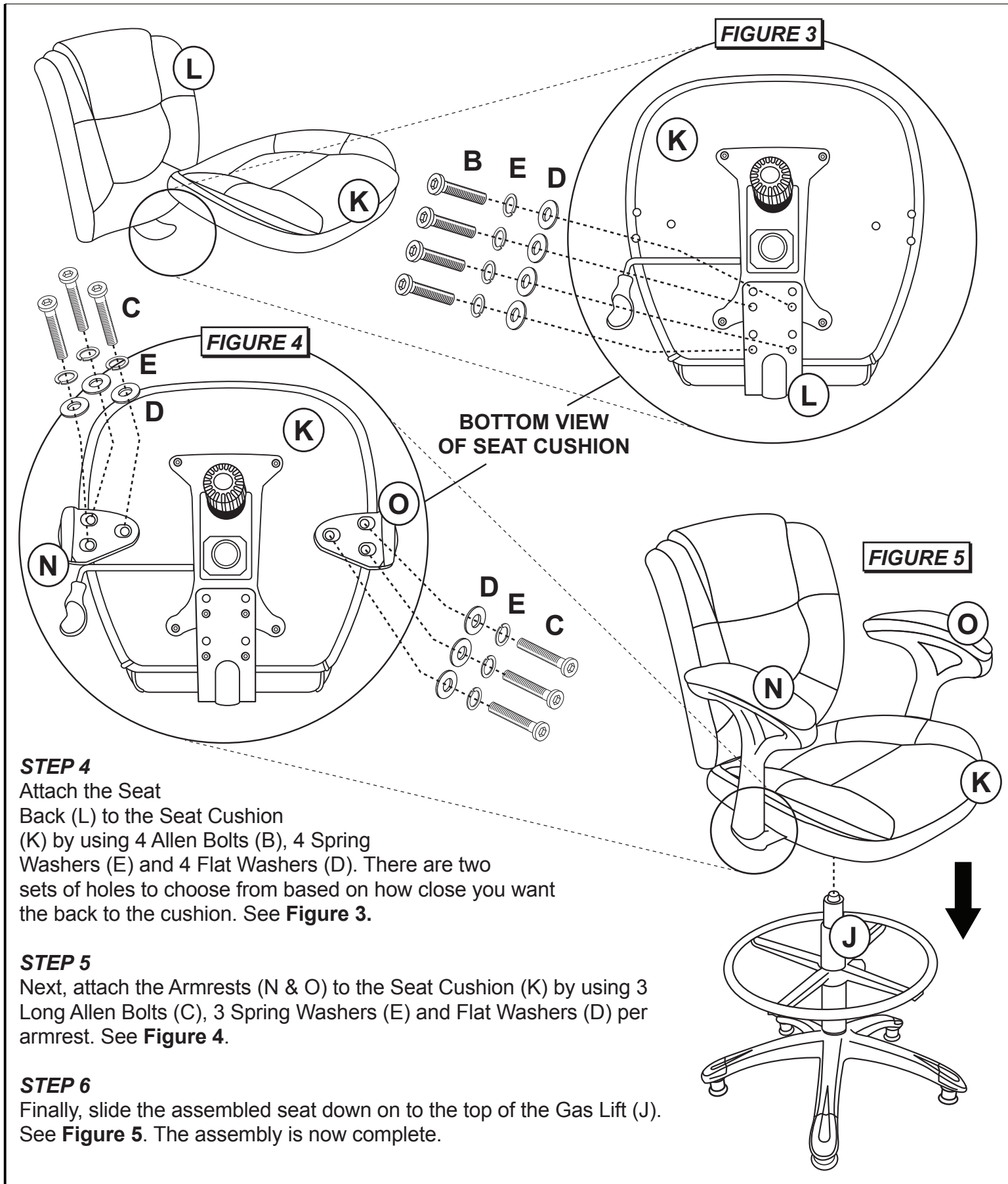
THE HEIGHT OF THE FOOTREST IS ADJUSTABLE

FIGURE 2



BOTTOM VIEW OF SEAT CUSHION

CARE & MAINTENANCE: The touch of a soft cloth is all the maintenance the finish will ever need. Please do not use harsh or abrasive cleaners for polishing, as they may cause damage to the finish. Periodic checks are recommended to make sure that all bolts, screws and nuts are securely tightened.



STEP 4

Attach the Seat Back (L) to the Seat Cushion (K) by using 4 Allen Bolts (B), 4 Spring Washers (E) and 4 Flat Washers (D). There are two sets of holes to choose from based on how close you want the back to the cushion. See **Figure 3**.

STEP 5

Next, attach the Armrests (N & O) to the Seat Cushion (K) by using 3 Long Allen Bolts (C), 3 Spring Washers (E) and Flat Washers (D) per armrest. See **Figure 4**.

STEP 6

Finally, slide the assembled seat down on to the top of the Gas Lift (J). See **Figure 5**. The assembly is now complete.