

SATELLITE

PRUSSE • HO L001 0245

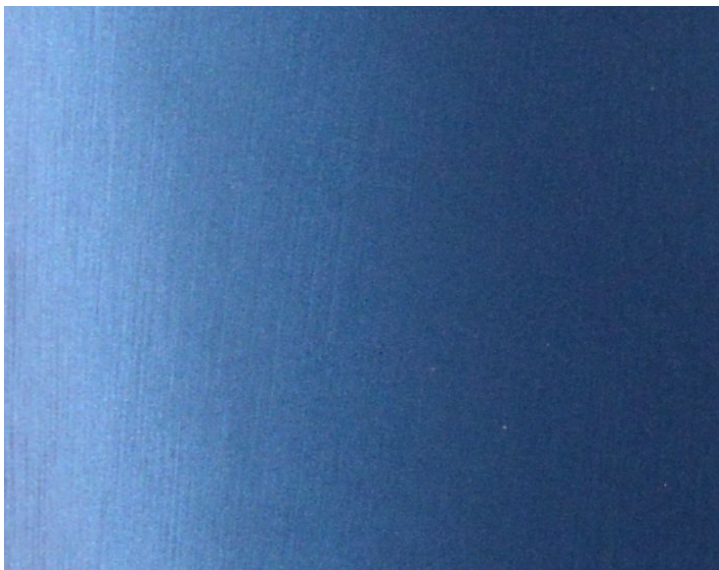
Leathers / Faux Leathers from the Similis Cuir Collection by Lelièvre



APPROX. MATERIAL WIDTH	55.12" / 140.00 cm
APPROX. REPEAT . . .	HORIZONTAL 0" / 0 cm VERTICAL 0" / 0 cm
CONTENT	75% PVC 15% POLYESTER 10% POLYURETHANE
SUGGESTED USE . . .	HEAVY DUTY UPHOLSTERY
PERFORMANCE / . . . CONTRACT	FLAME RETARDANT (FR) HEAVY DUTY ABRASION IMO CERTIFIED
ABRASION	200,000 MARTINDALE
FIRECODE	EN1021.
CLEANABILITY	SPONGE WIPE
MADE IN	SPAIN
STOCKED IN	SUPPLIERS WAREHOUSE EUROPE
DESIGN	PLAIN / SOLID
SCALE	PLAIN / SOLID

DESIGN INSPIRATION

Satellite is a faux leather with a smooth, metallic and iridescent finish. It plays with the effects of the changing light, the reflections it produces display a range of timeless colors. Satellite conforms to both IMO and European (EN 1021 parts 1 & 2) flammability standards and is both robust and very easy to clean and maintain.



DETAIL IMAGE