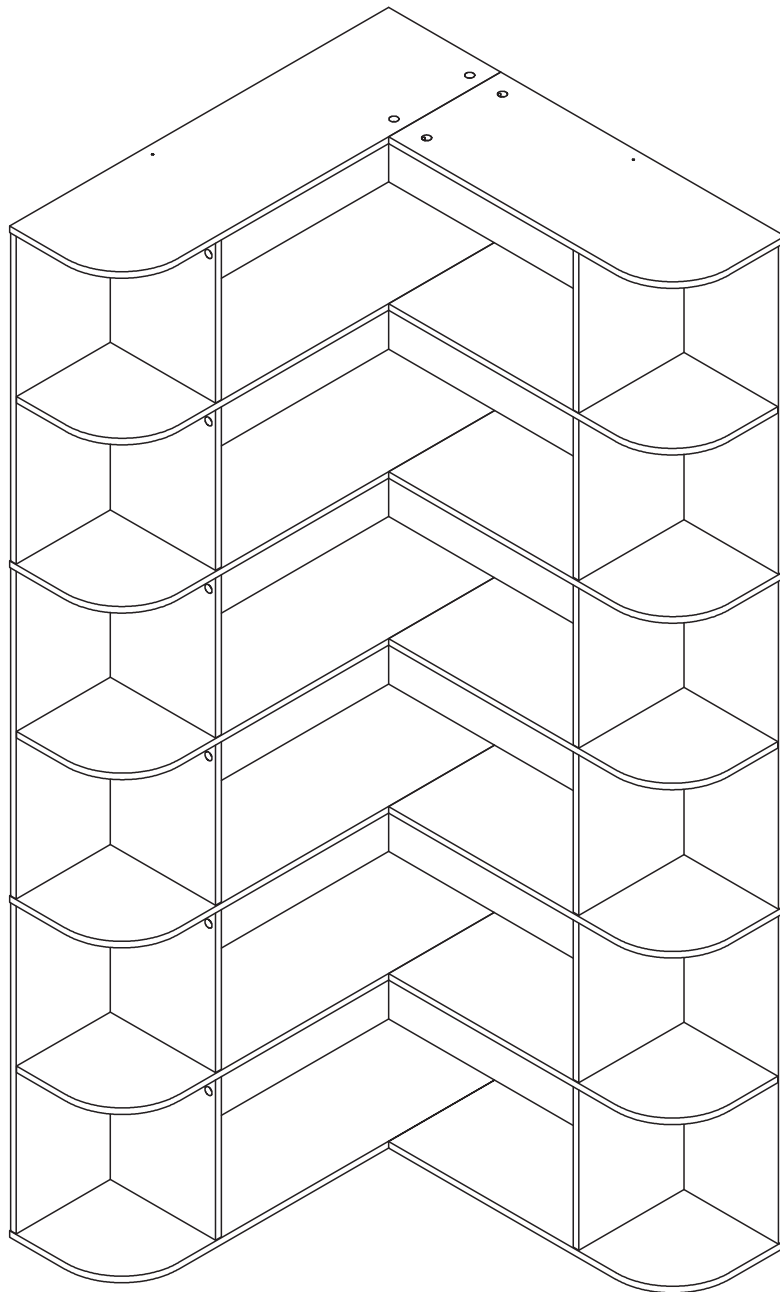


Cabinet > Manual



Thank you for purchase on our products. Please contact us if you have difficulty with assembly or need replacement parts. Our customer service is here to assist you. Please attach your User Name or Order ID so that we can assist you better.

Vielen Dank für Ihren Kauf von uns Produkten. Bitte kontaktieren Sie uns, wenn Sie Probleme mit Montage haben oder Ersatzteile benötigen. Wir Kundenservice ist für Sie da. Bitte geben Sie Ihren Benutzernamen oder Ihre Bestellnummer an, damit wir Sie besser unterstützen können.

EN

WARNING

Serious or fatal injury may occur from unexpected assembly or use.

1. During the assembly process, keep all parts away from babies or children.
2. Always securely fix this product to the wall. Make sure the wall area to be drilled is free from hidden electrical wires, water and gas pipes.
3. Use of tip-over restraints may only reduce, but not eliminate the risk of tip-over.
4. Unless specially designed to accommodate, do not set heavy objects on top of this product.
5. Place the heaviest items on the lowest shelf.
6. Never allow children to climb or bang on drawers, doors or shelves.

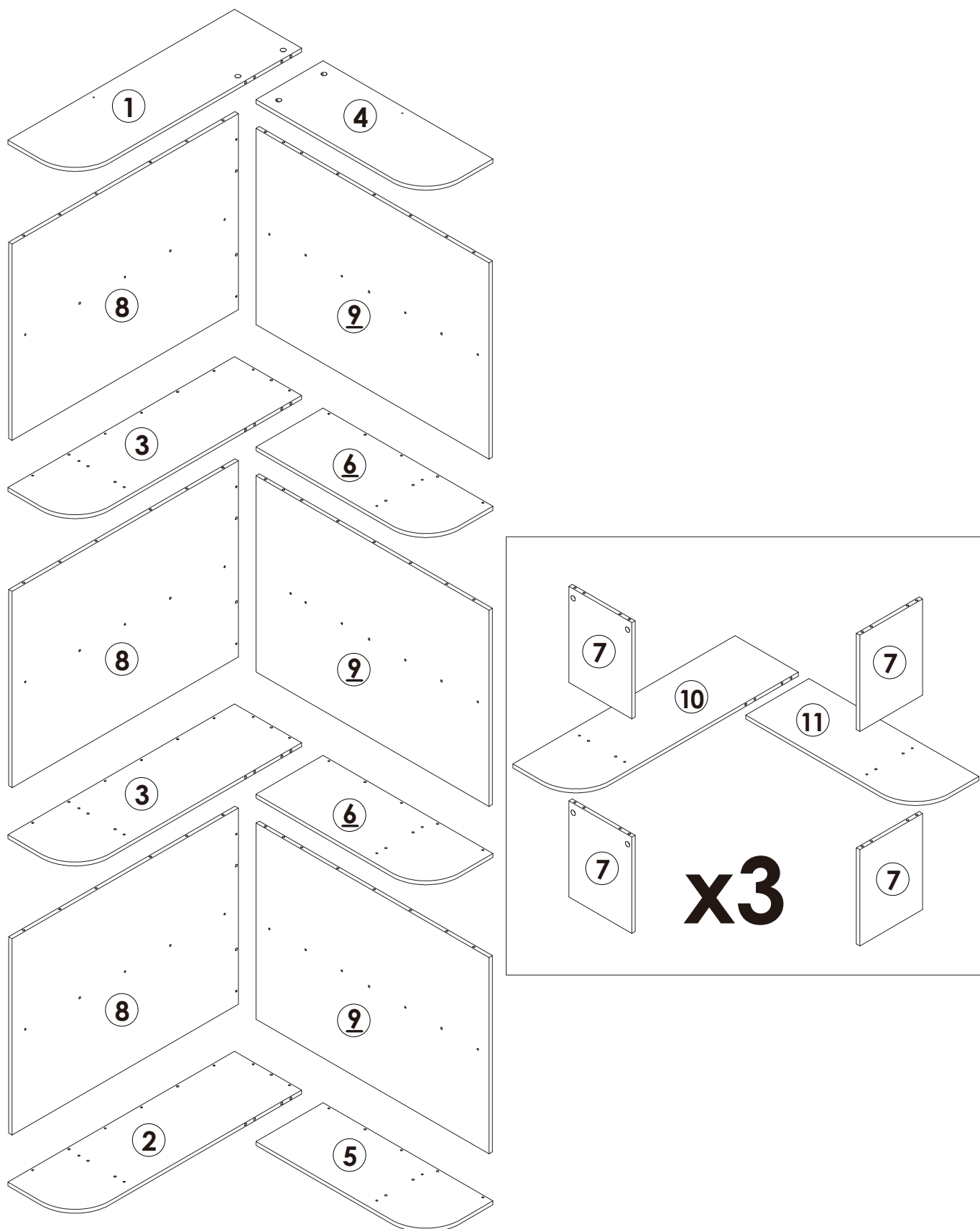
DE

WARNUNG

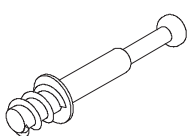


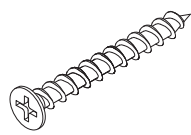
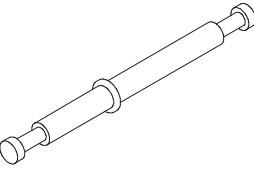
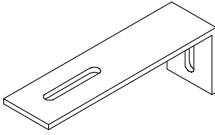
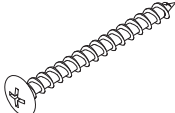
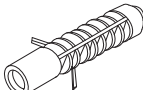
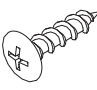
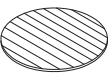
Bei unerwarteter Montage oder Verwendung können schwere oder tödliche Verletzung auftreten.

1. Legen Sie in den Montageprozess alle Teile weg von Babys oder Kindern.
2. Stellen Sie sicher, dass der gebohrte Wandbereich frei von verborgenen Stromkabeln, Wasser- und Gasleitungen ist, wenn Sie dieses Produkt an der Wand befestigen.
3. Die Verwendung von Kippsicherungen kann die Gefahr eines Kippens nur verringern, jedoch nicht beseitigen.
4. Setzen Sie bitte keine schweren Gegenstände auf dieses Produkt, es sei denn, dass das Produkt speziell für die Unterbringung konzipiert wird.
5. Legen Sie bitte die schwersten Gegenstände auf das unterste Regal.
6. Erlauben Sie nie Kindern, auf Schubladen, Türen oder Regale zu klettern oder zu knallen.

Parts List(EN) / Teile Liste(DE)

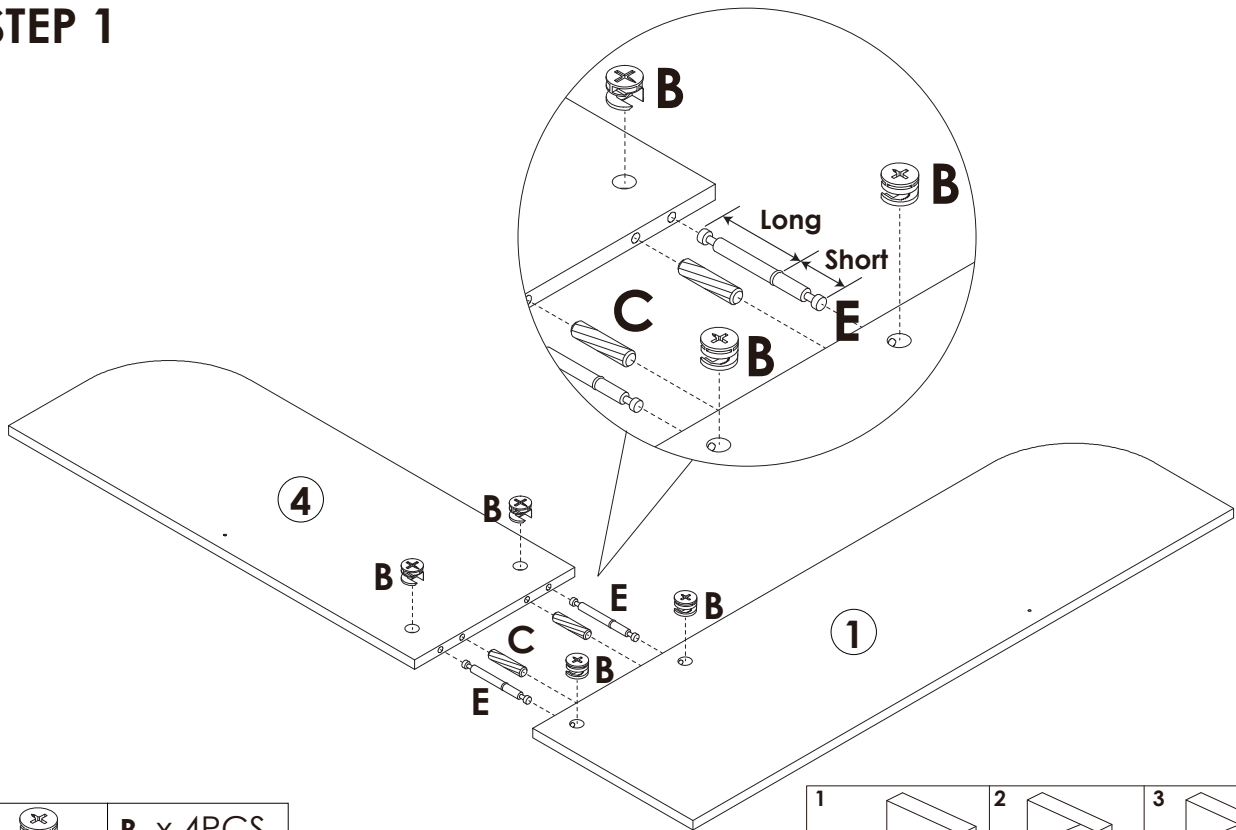




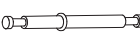
Parts List(EN) / Teile Liste(DE)

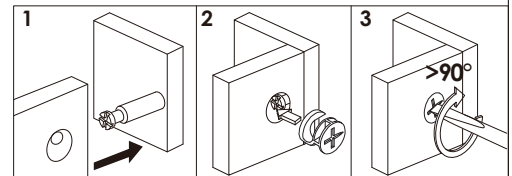
<p>A</p>  <div style="text-align: right; border: 1px solid black; padding: 2px; display: inline-block;">51+2PCS</div>	<p>B</p>  <div style="text-align: right; border: 1px solid black; padding: 2px; display: inline-block;">79+2PCS</div>	<p>C</p>  <div style="text-align: right; border: 1px solid black; padding: 2px; display: inline-block;">110+2PCS</div>
<p>D</p>  <p>M4×35mm</p> <div style="text-align: right; border: 1px solid black; padding: 2px; display: inline-block;">81+2PCS</div>	<p>E</p>  <div style="text-align: right; border: 1px solid black; padding: 2px; display: inline-block;">14+1PCS</div>	<p>F</p>  <div style="text-align: right; border: 1px solid black; padding: 2px; display: inline-block;">2PCS</div>
<p>G</p>  <p>M4×35mm</p> <div style="text-align: right; border: 1px solid black; padding: 2px; display: inline-block;">2PCS</div>	<p>H</p>  <div style="text-align: right; border: 1px solid black; padding: 2px; display: inline-block;">2PCS</div>	<p>J</p>  <p>M4×12mm</p> <div style="text-align: right; border: 1px solid black; padding: 2px; display: inline-block;">2PCS</div>
<p>K</p>  <p>Ø20mm</p> <div style="text-align: right; border: 1px solid black; padding: 2px; display: inline-block;">44+2PCS</div>		

Assembly Steps(EN) / Montageschritte(DE)

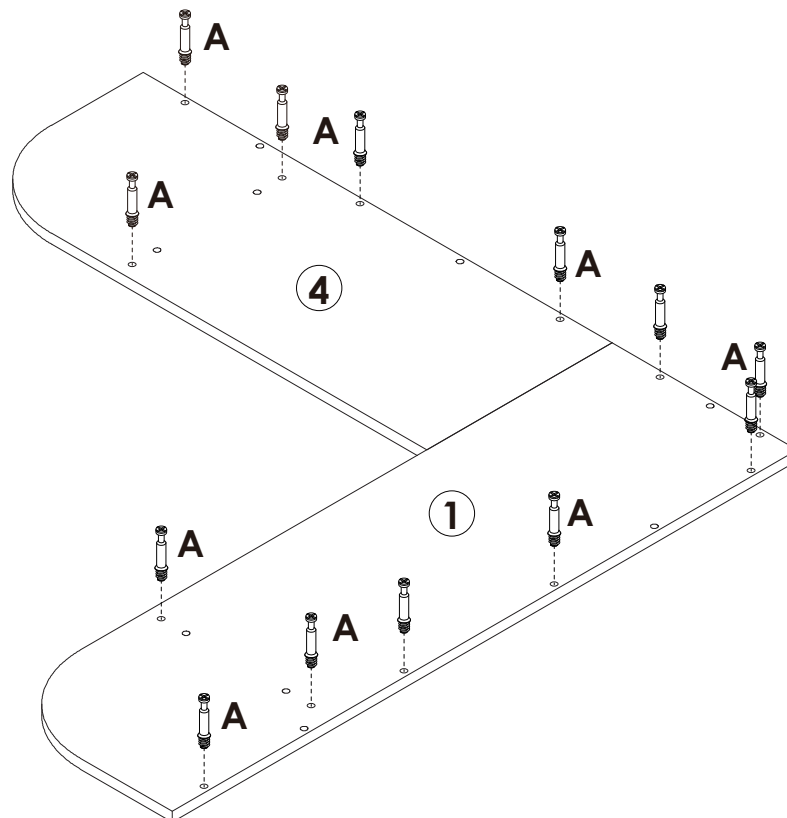
STEP 1



	B x 4PCS
	C x 2PCS
	E x 2PCS



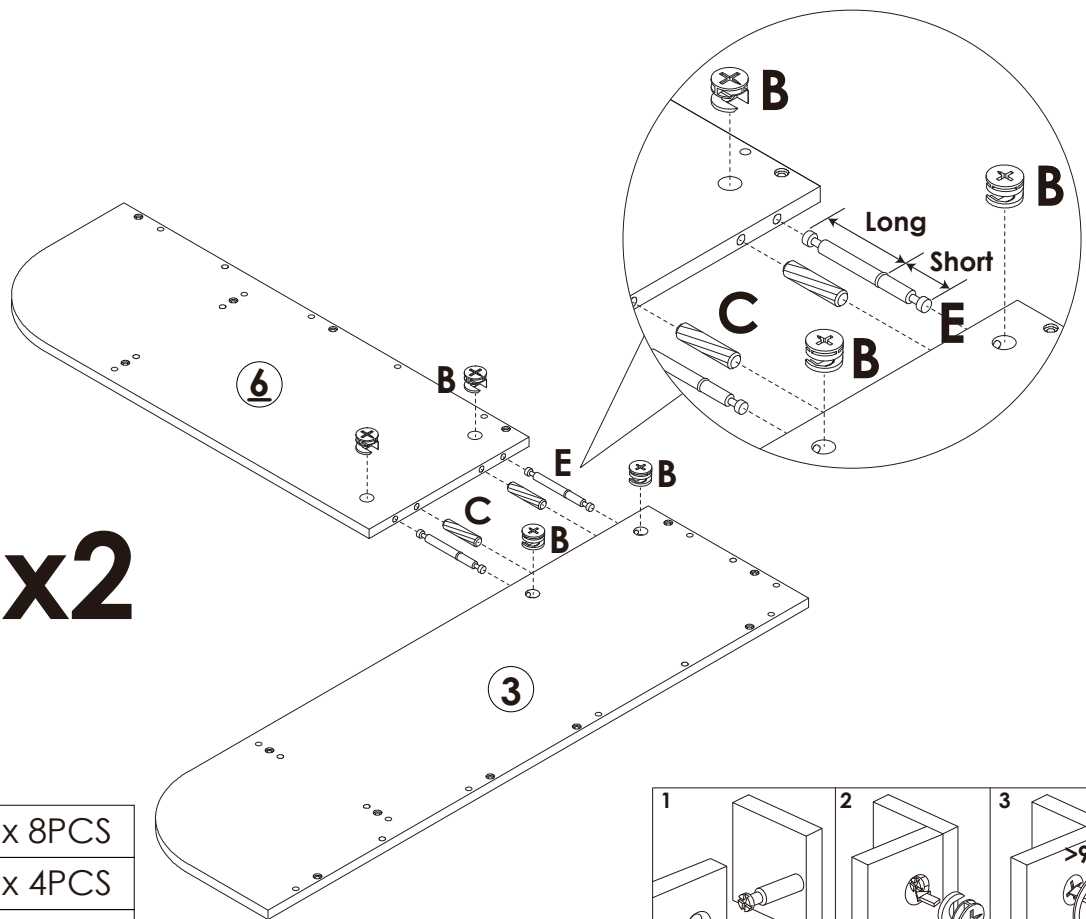
STEP 2



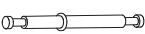


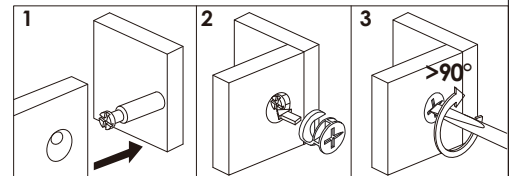
	A x 13PCS
---	------------------

Assembly Steps(EN) / Montageschritte(DE)

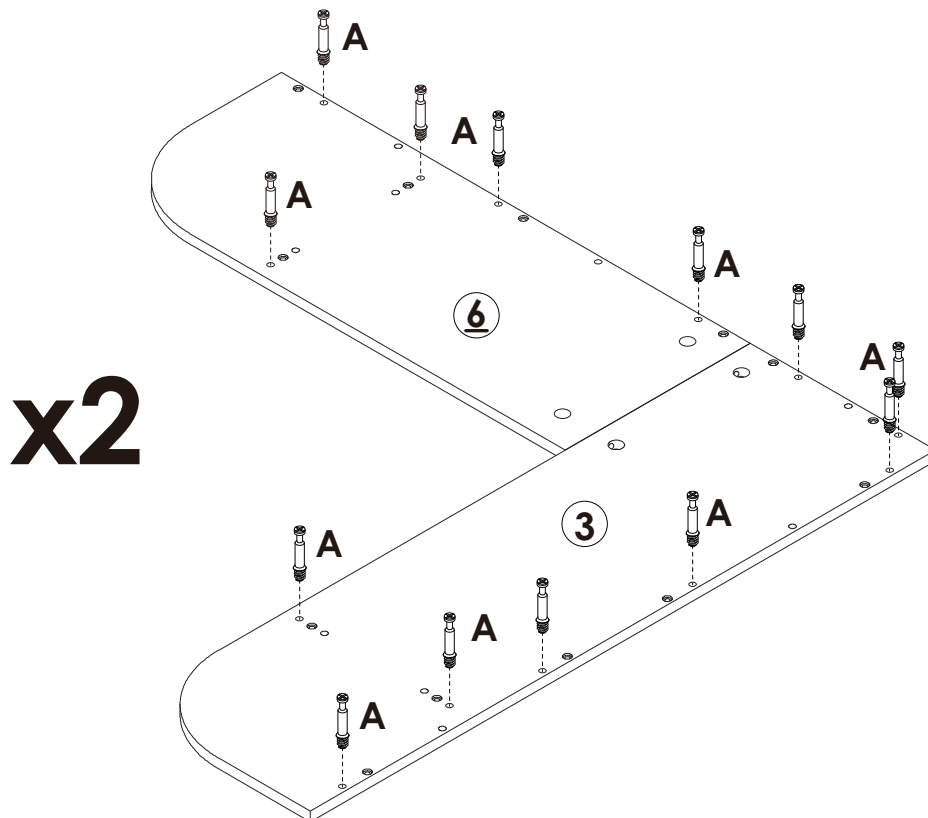
STEP 3



	B x 8PCS
	C x 4PCS
	E x 4PCS



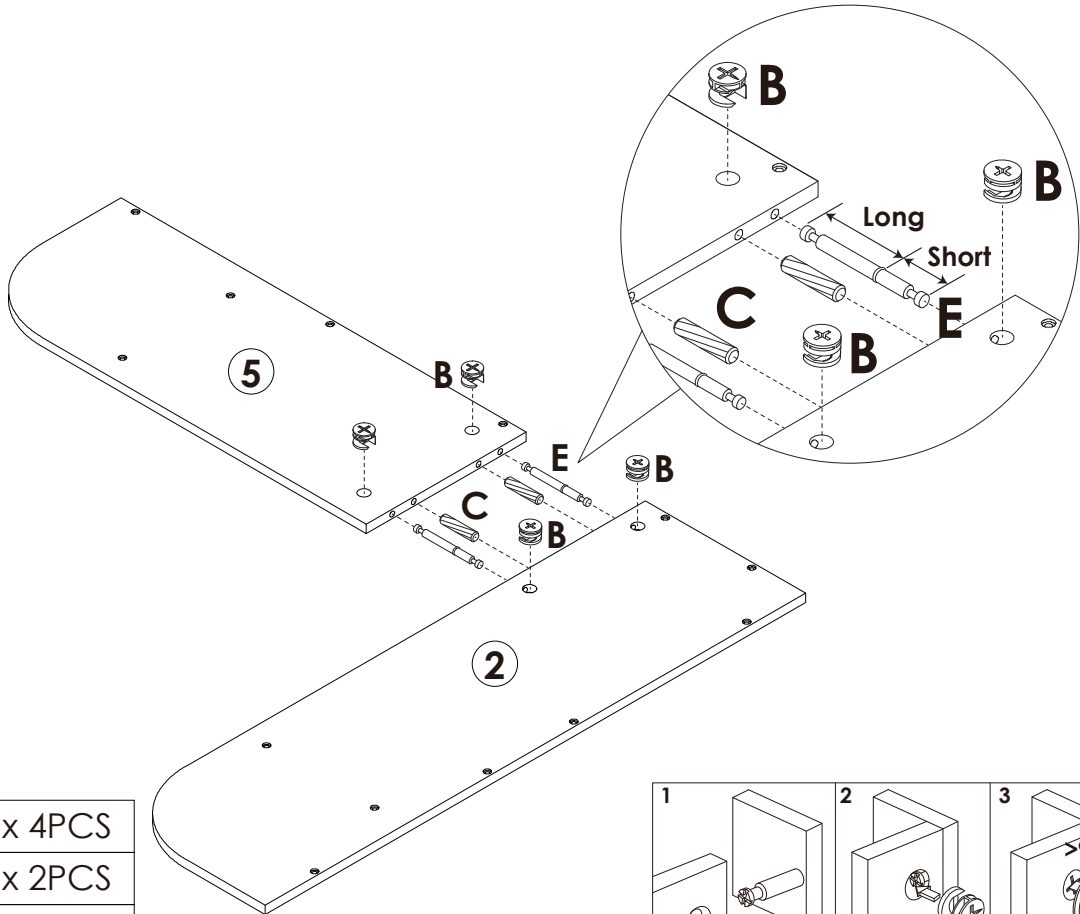
STEP 4



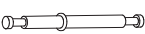


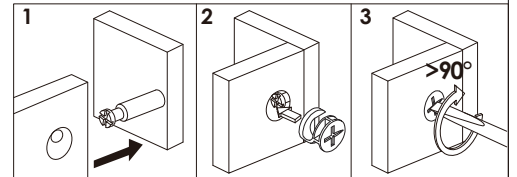
	A x 26PCS
---	------------------

Assembly Steps(EN) / Montageschritte(DE)

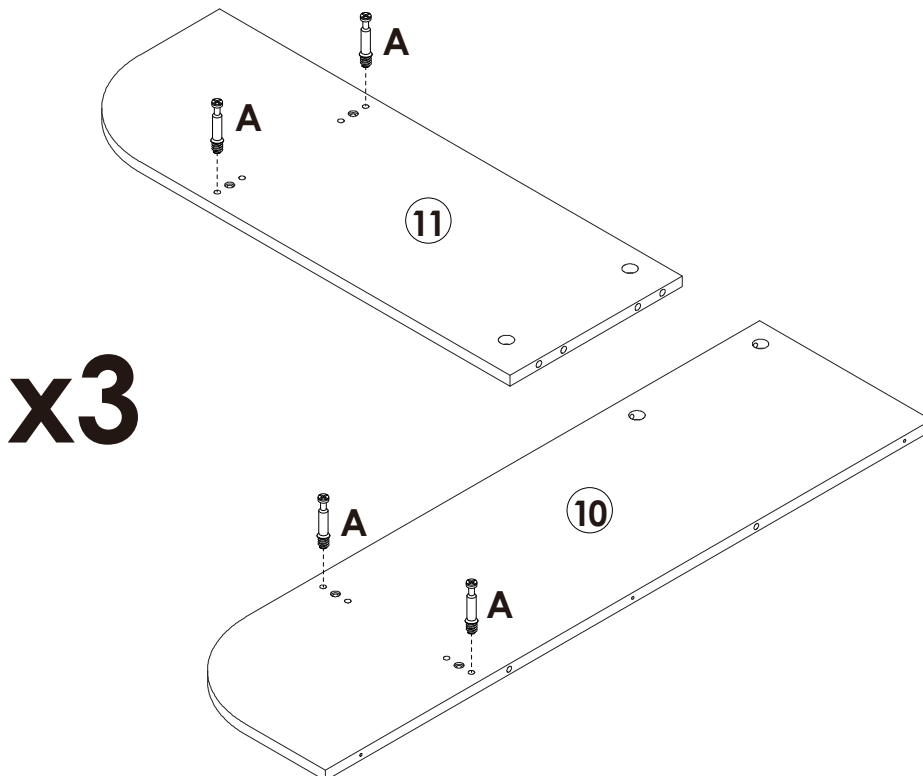
STEP 5



	B x 4PCS
	C x 2PCS
	E x 2PCS



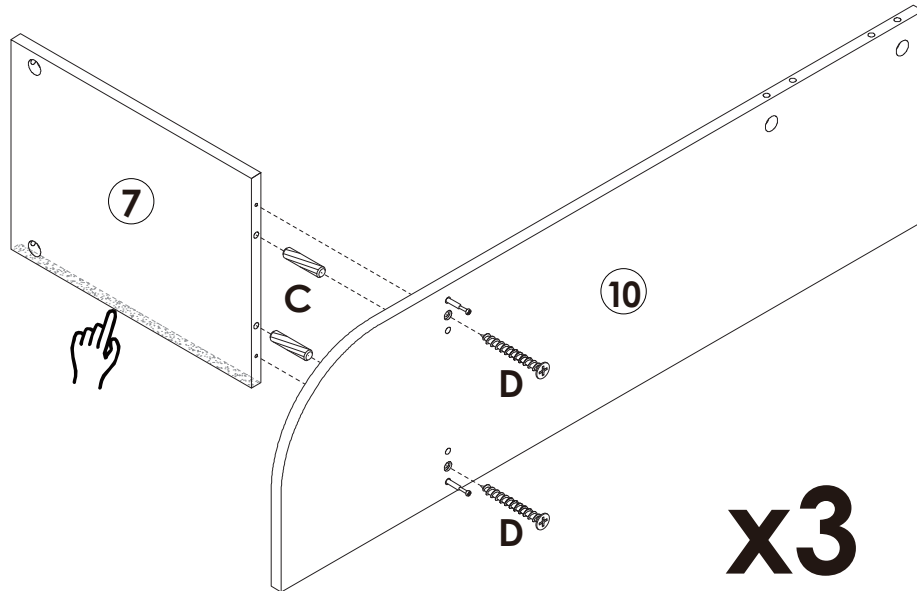
STEP 6





	A x 12PCS
---	------------------

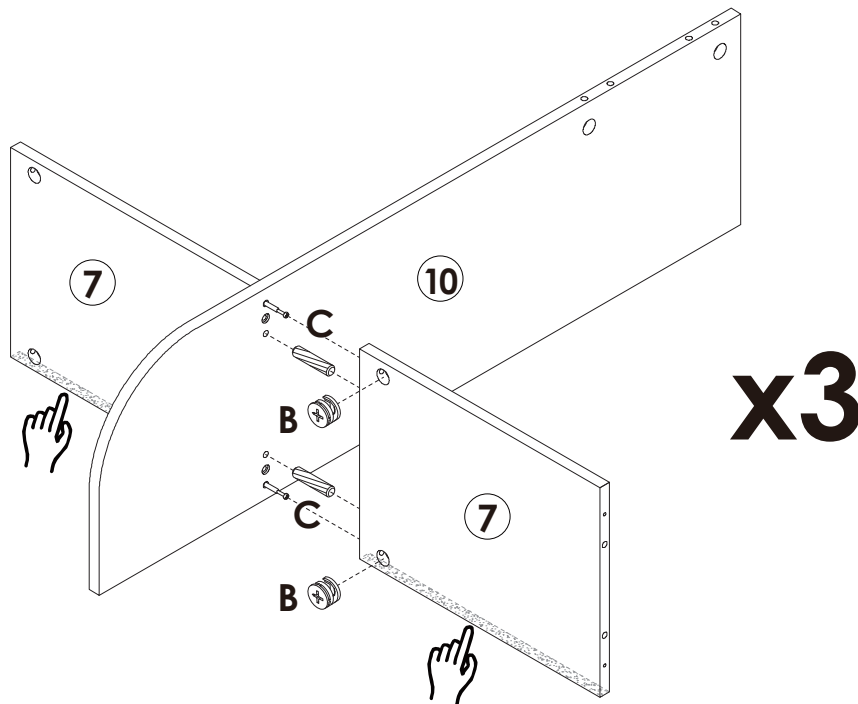
Assembly Steps(EN) / Montageschritte(DE)



STEP 7

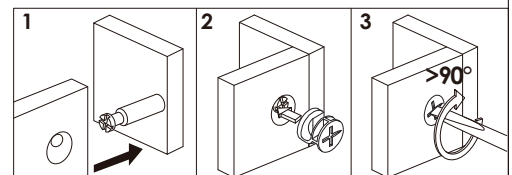


	C x 6PCS
	D x 6PCS

STEP 8

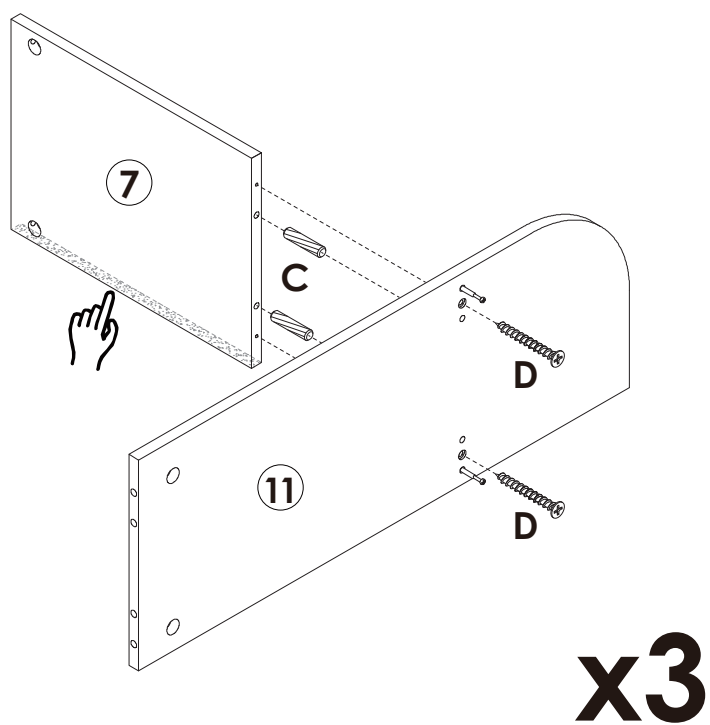




	B x 6PCS
	C x 6PCS



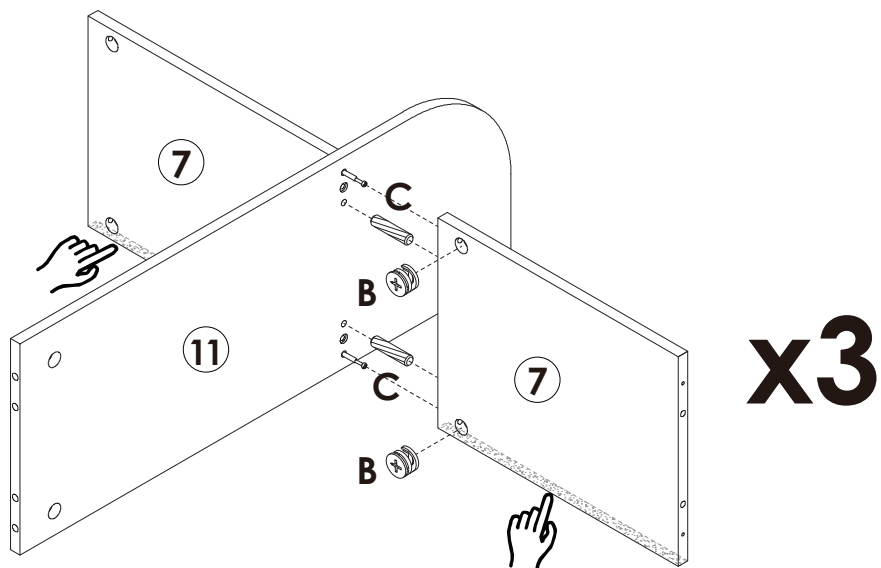
Assembly Steps(EN) / Montageschritte(DE)



STEP 9

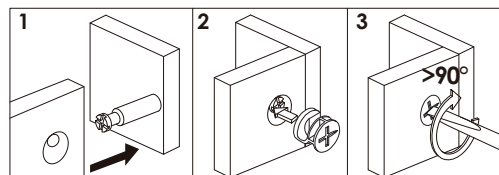


	C x 6PCS
	D x 6PCS

STEP 10

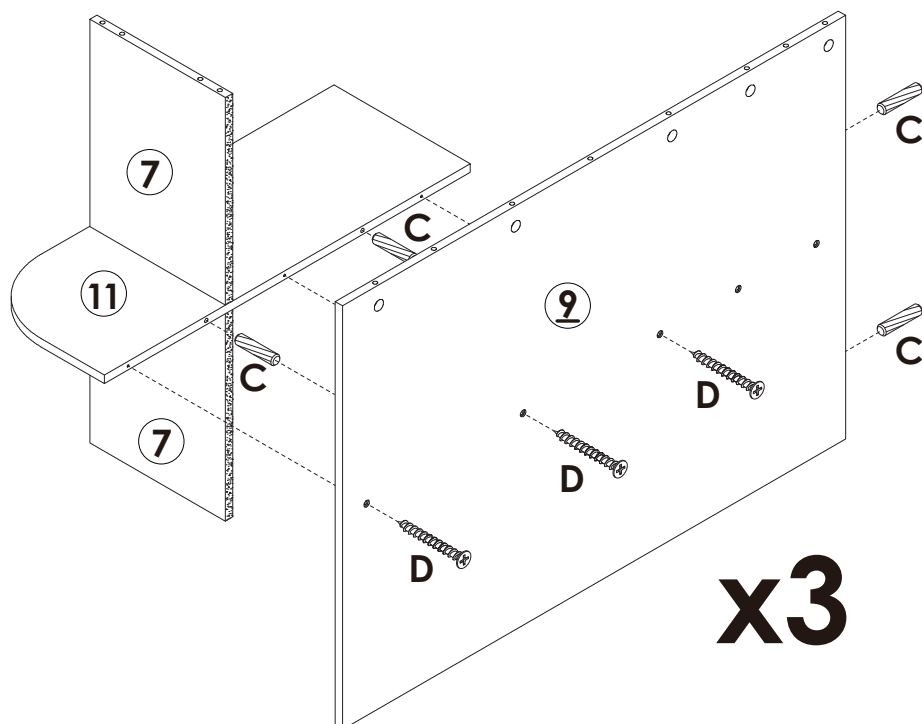




	B x 6PCS
	C x 6PCS



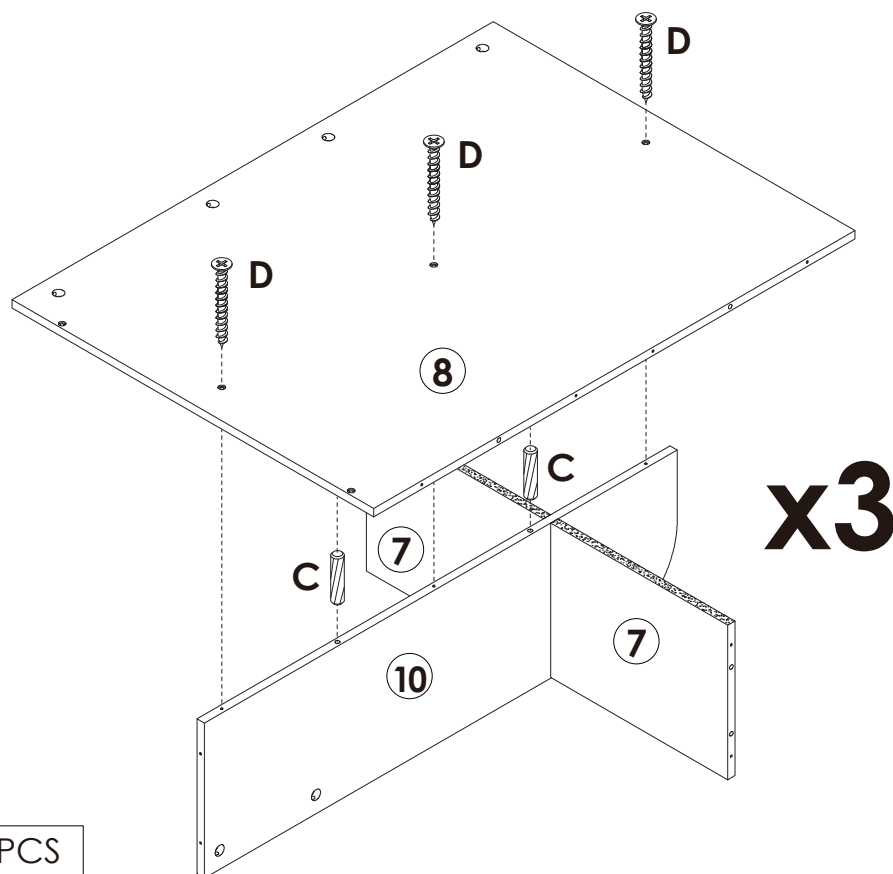
Assembly Steps(EN) / Montageschritte(DE)



STEP 11



	C x 12PCS
	D x 9PCS

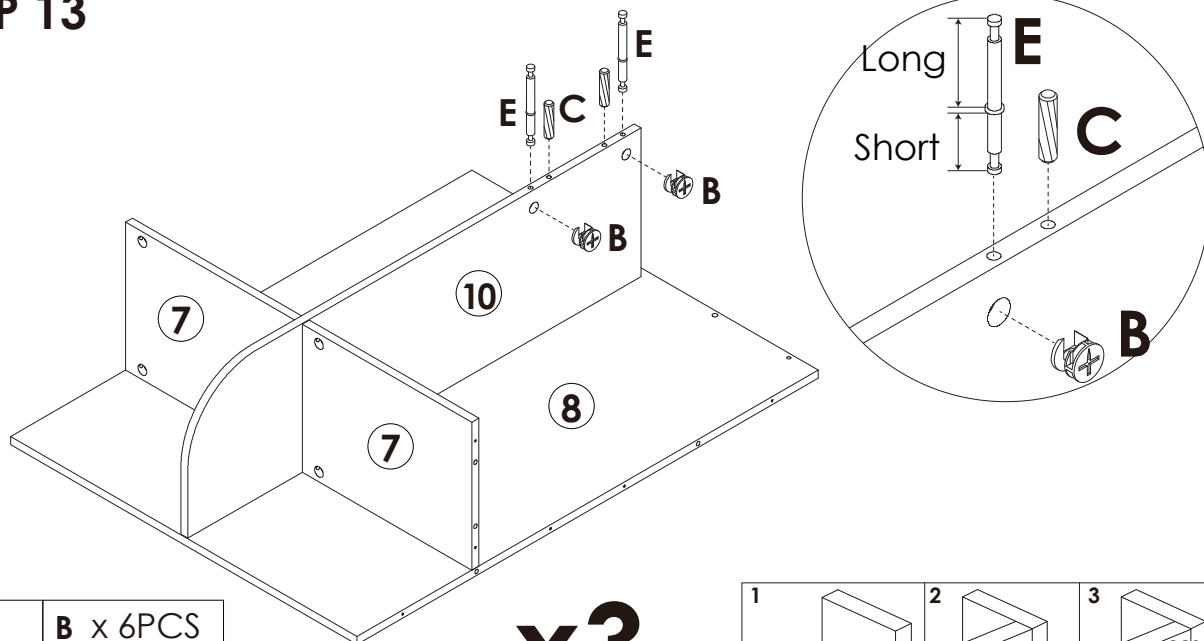
STEP 12



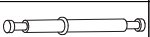


	C x 6PCS
	D x 9PCS

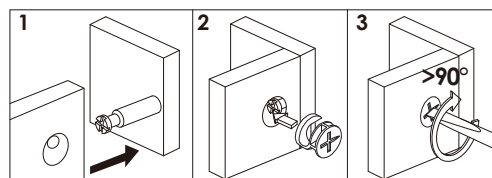
Assembly Steps(EN) / Montageschritte(DE)

STEP 13

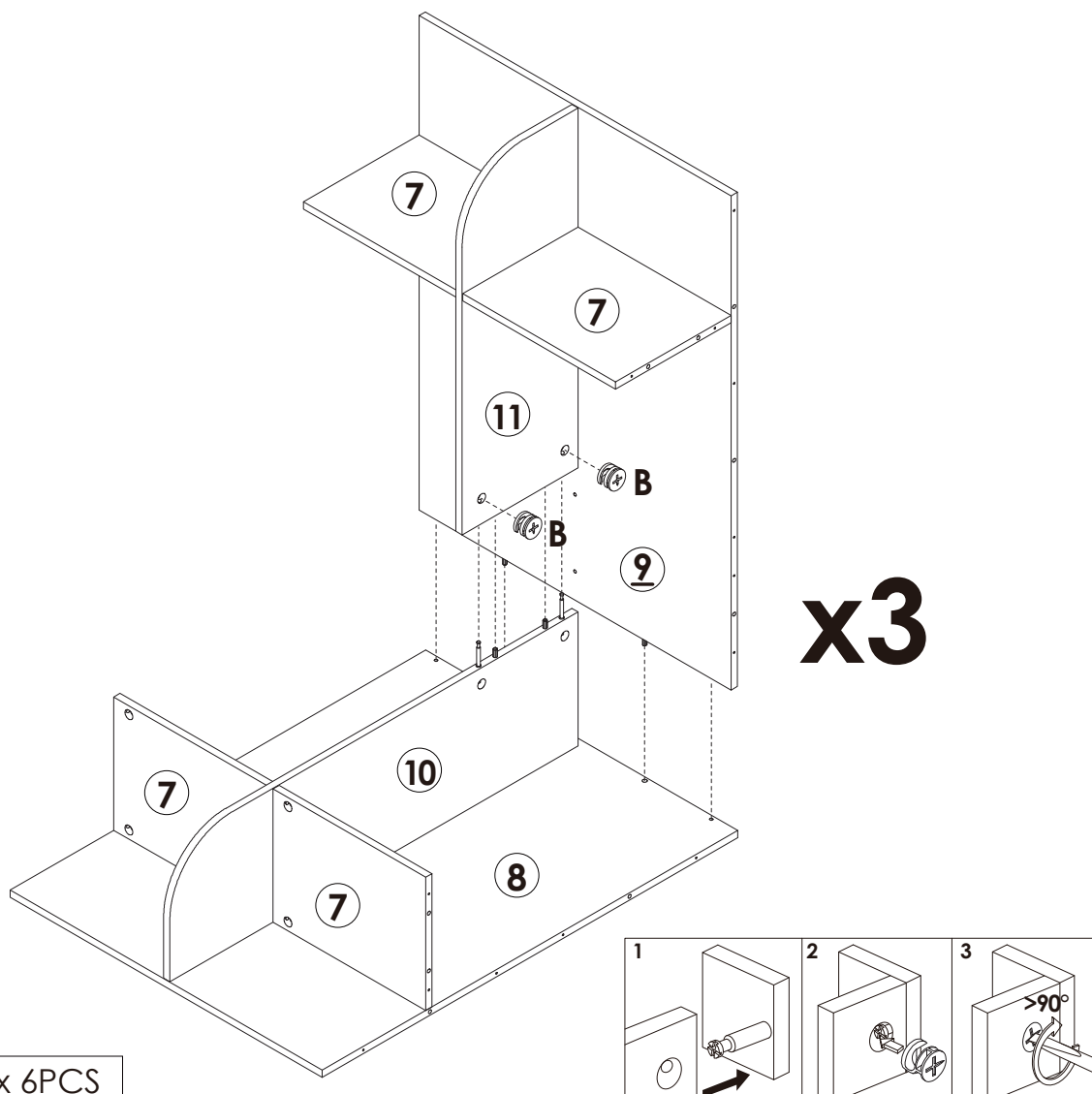


	B x 6PCS
	C x 6PCS
	E x 6PCS

x3

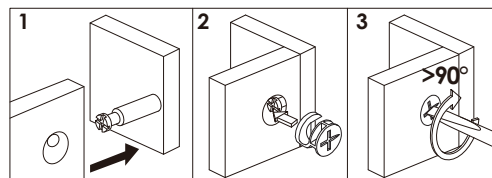


STEP 14



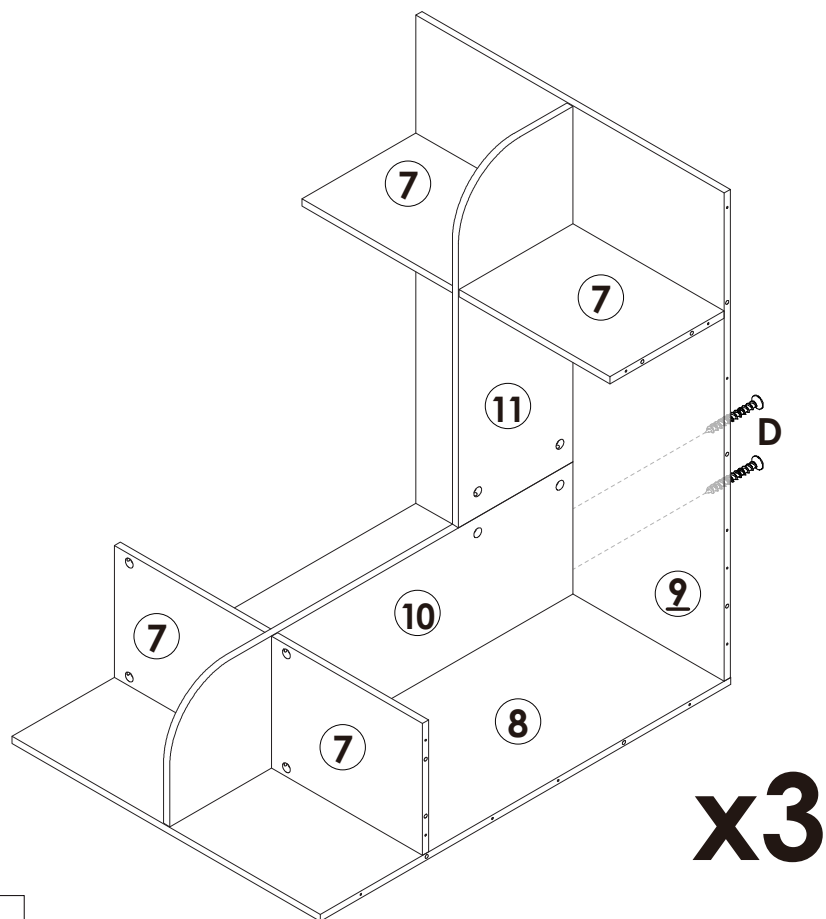
x3

	B x 6PCS
---	-----------------



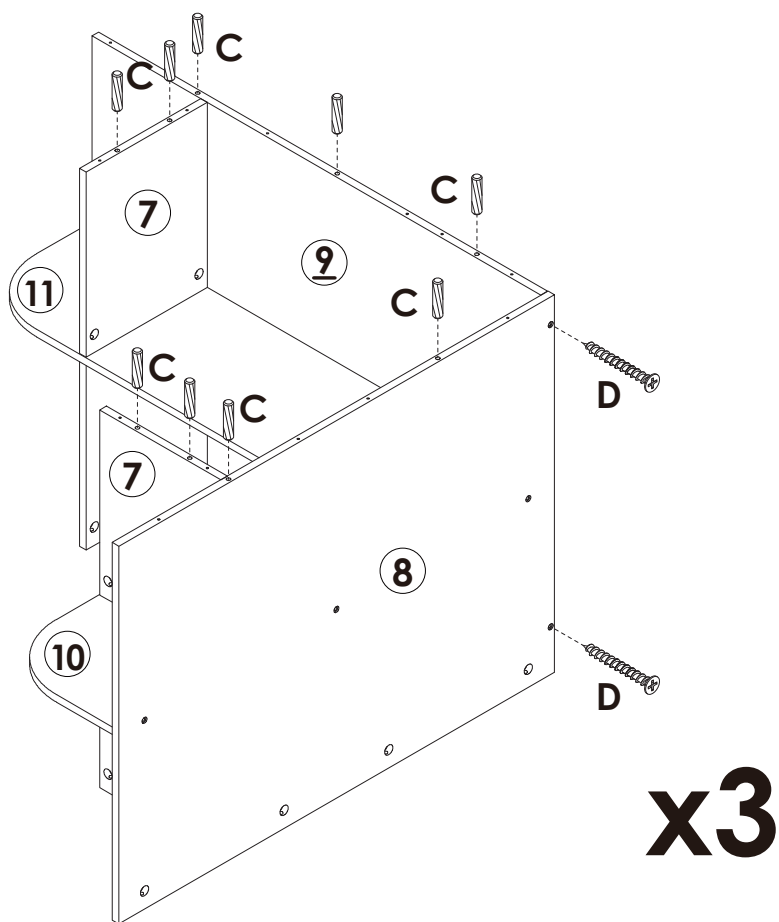
Assembly Steps(EN) / Montageschritte(DE)

STEP 15



 **D x 6PCS**

STEP 16

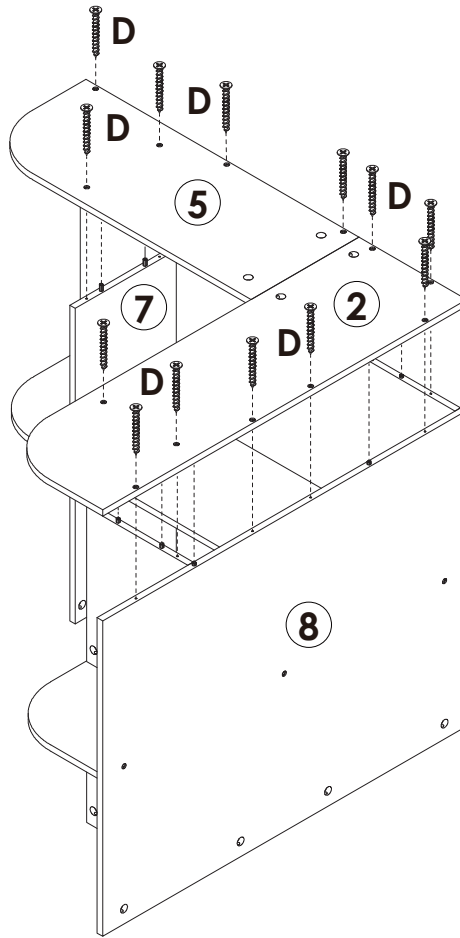


 **C x 27PCS**

 **D x 6PCS**

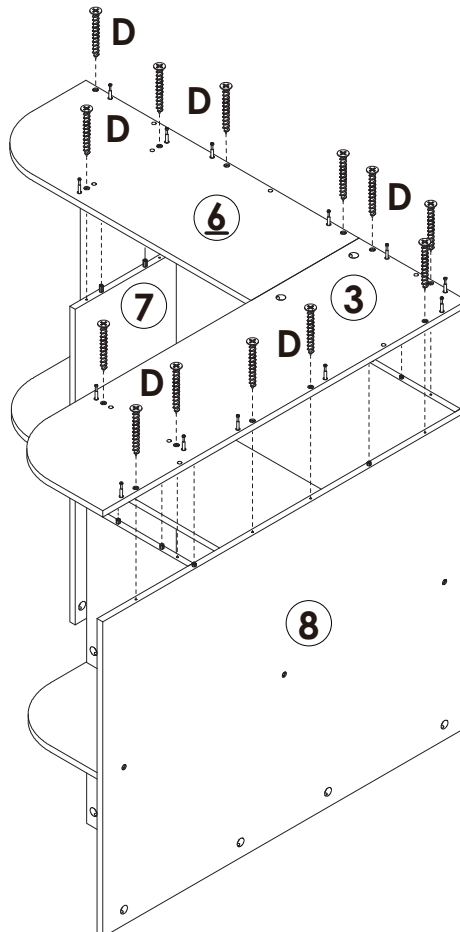
Assembly Steps(EN) / Montageschritte(DE)

STEP 17



 D x 13PCS

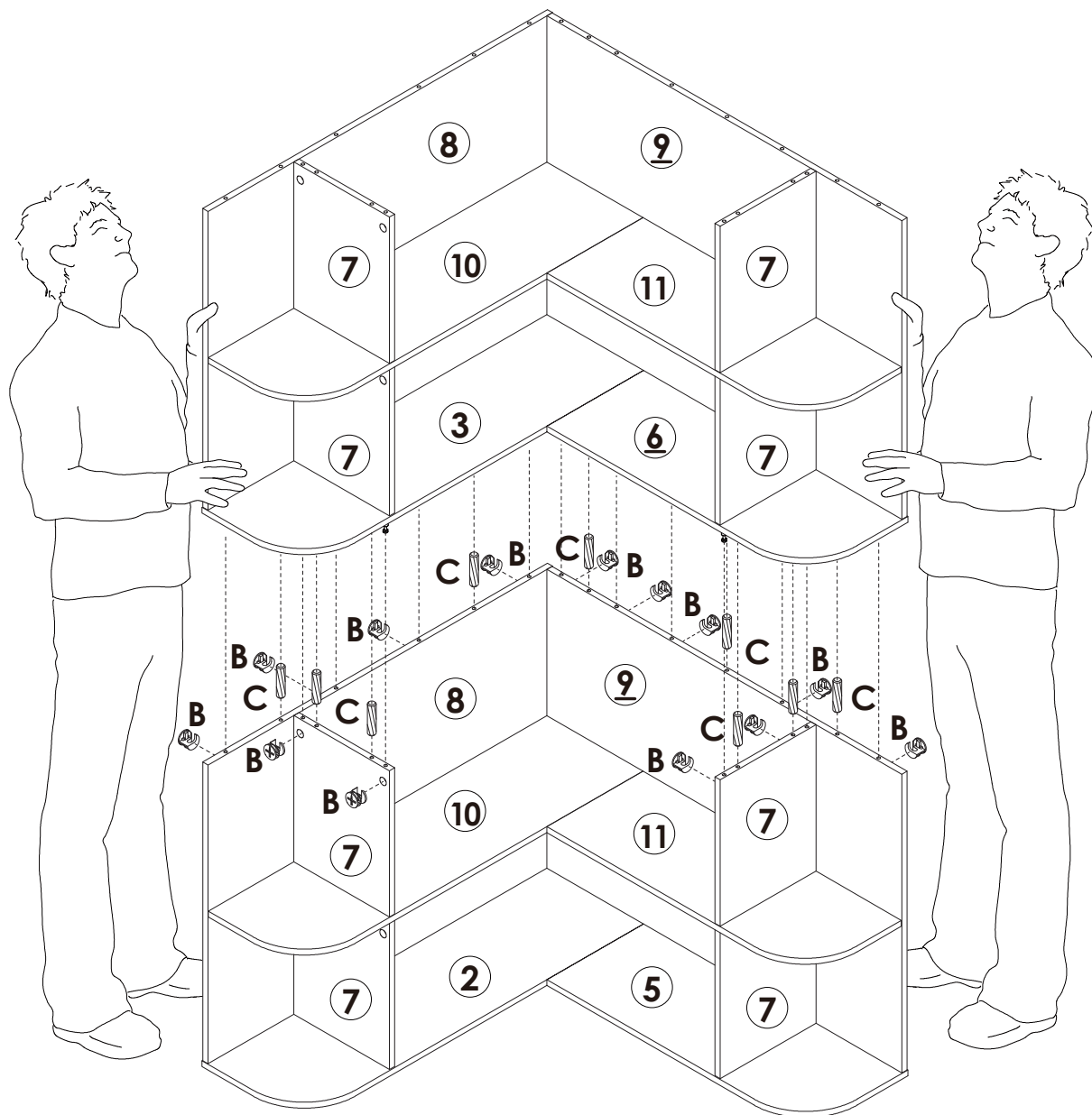
STEP 18





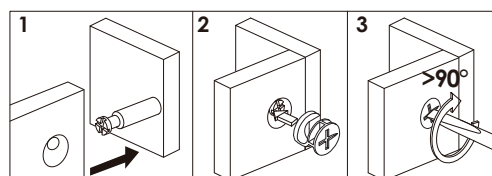
x2

 D x 26PCS

STEP 19

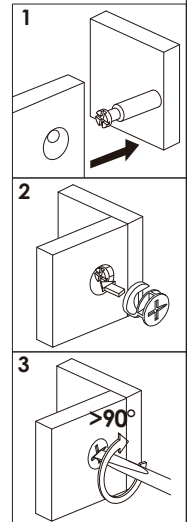
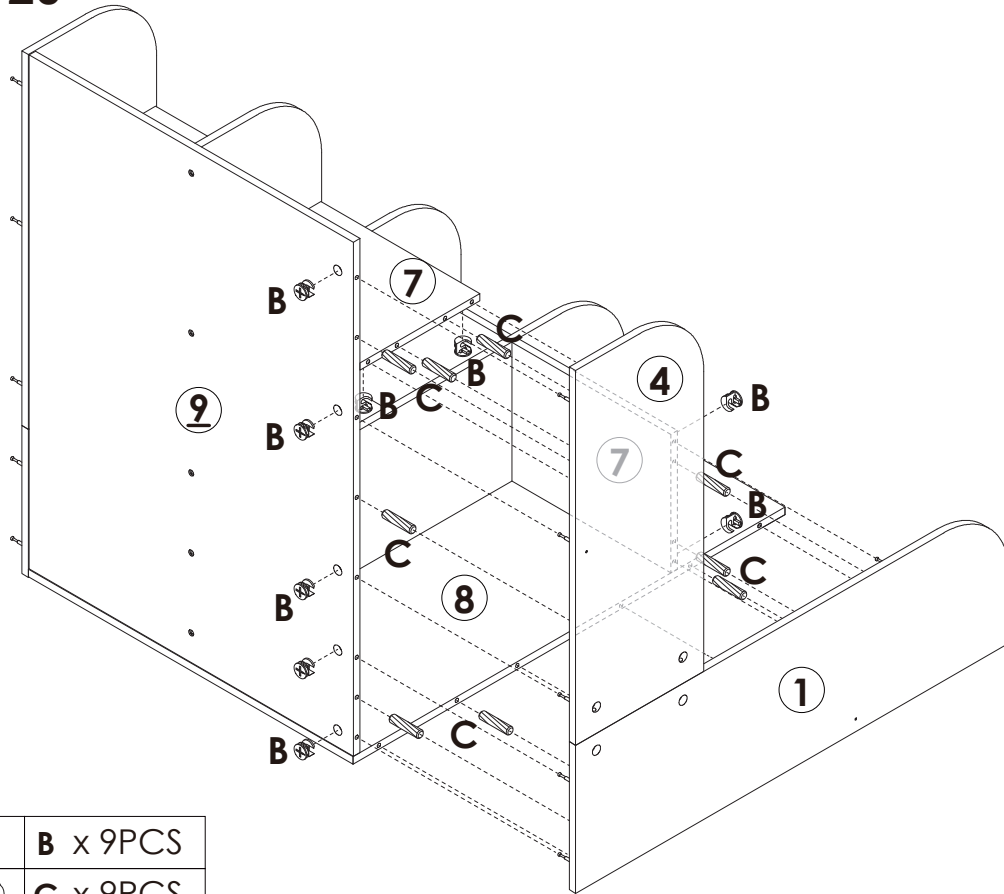




	B x 13PCS
	C x 9PCS



Assembly Steps(EN) / Montageschritte(DE)

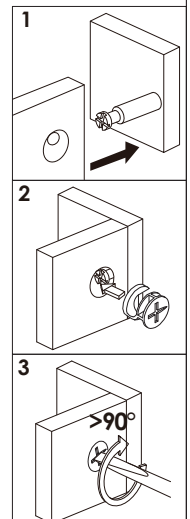
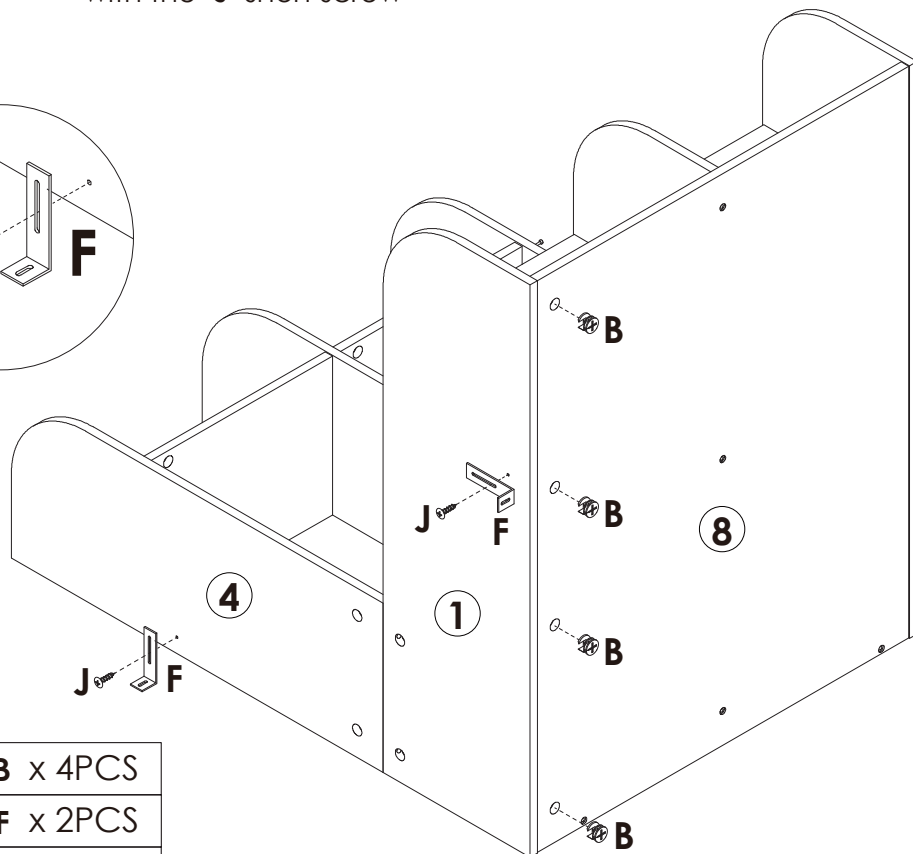
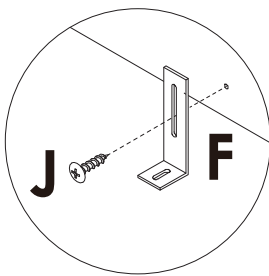
STEP 20






	B x 9PCS
	C x 9PCS

STEP 21

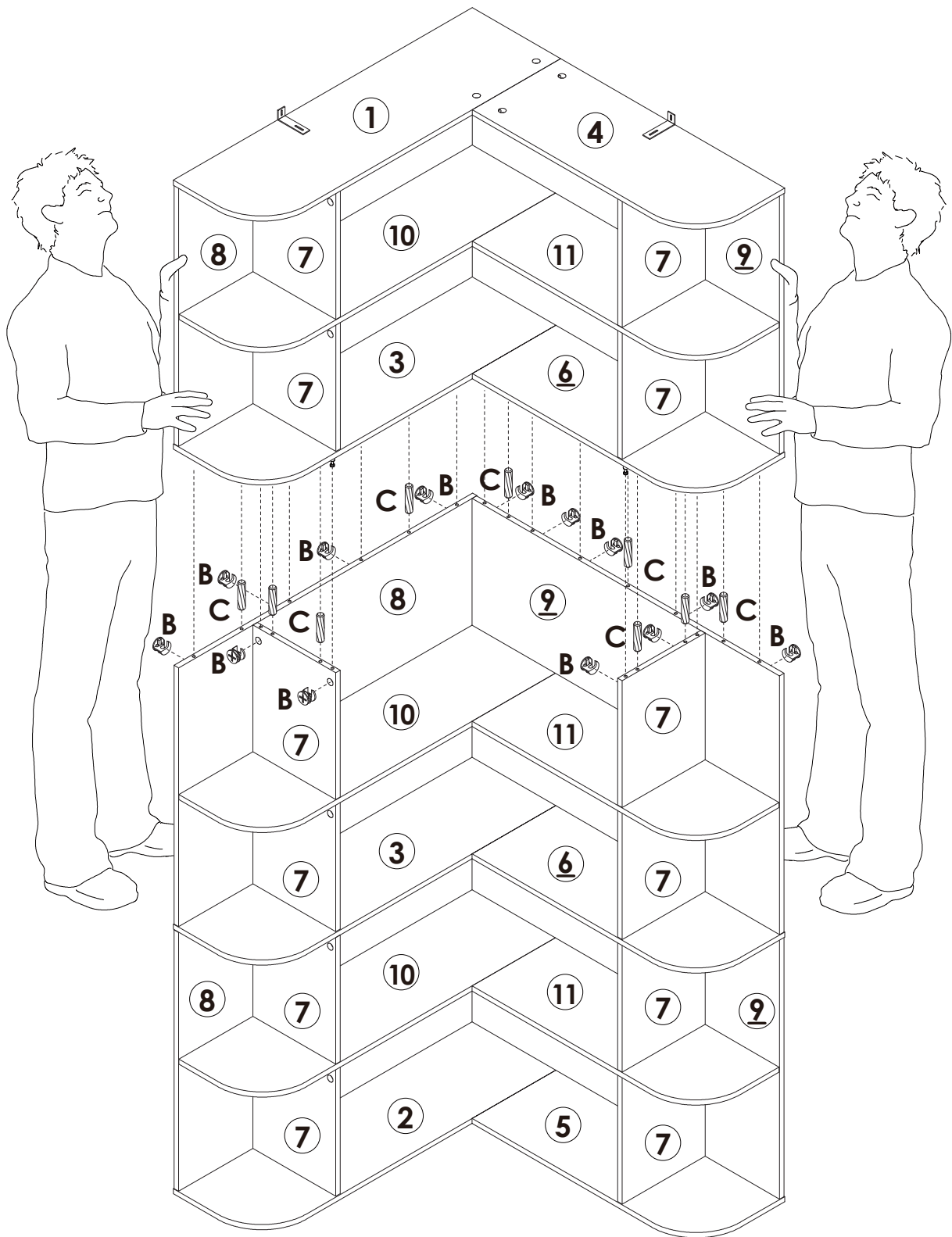
Lock the long side of the "F" L-shaped metal plate to the ① and ④ board with the "J" short screw





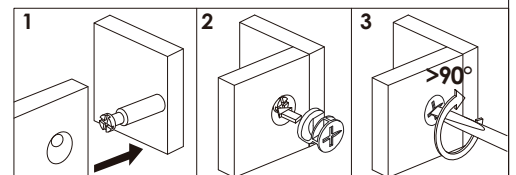
	B x 4PCS
	F x 2PCS
	J x 2PCS

Assembly Steps(EN) / Montageschritte(DE)

STEP 22



	B x 13PCS
	C x 9PCS

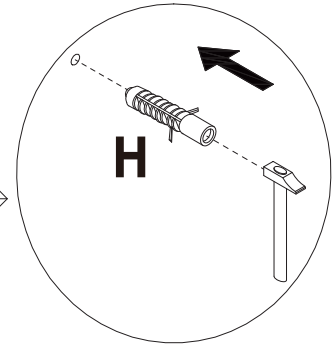
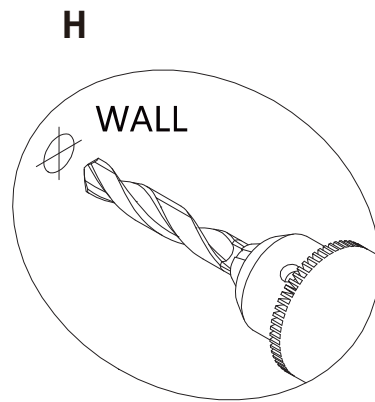
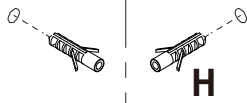


Assembly Steps(EN) / Montageschritte(DE)

STEP 23

WALL

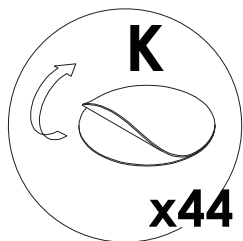
Drill 2 holes on the wall at the required position for anti-falling device installation.



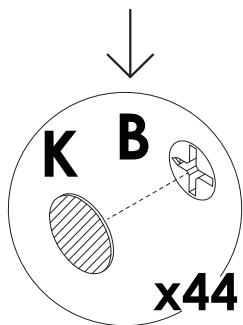
H x 2PCS

STEP 24

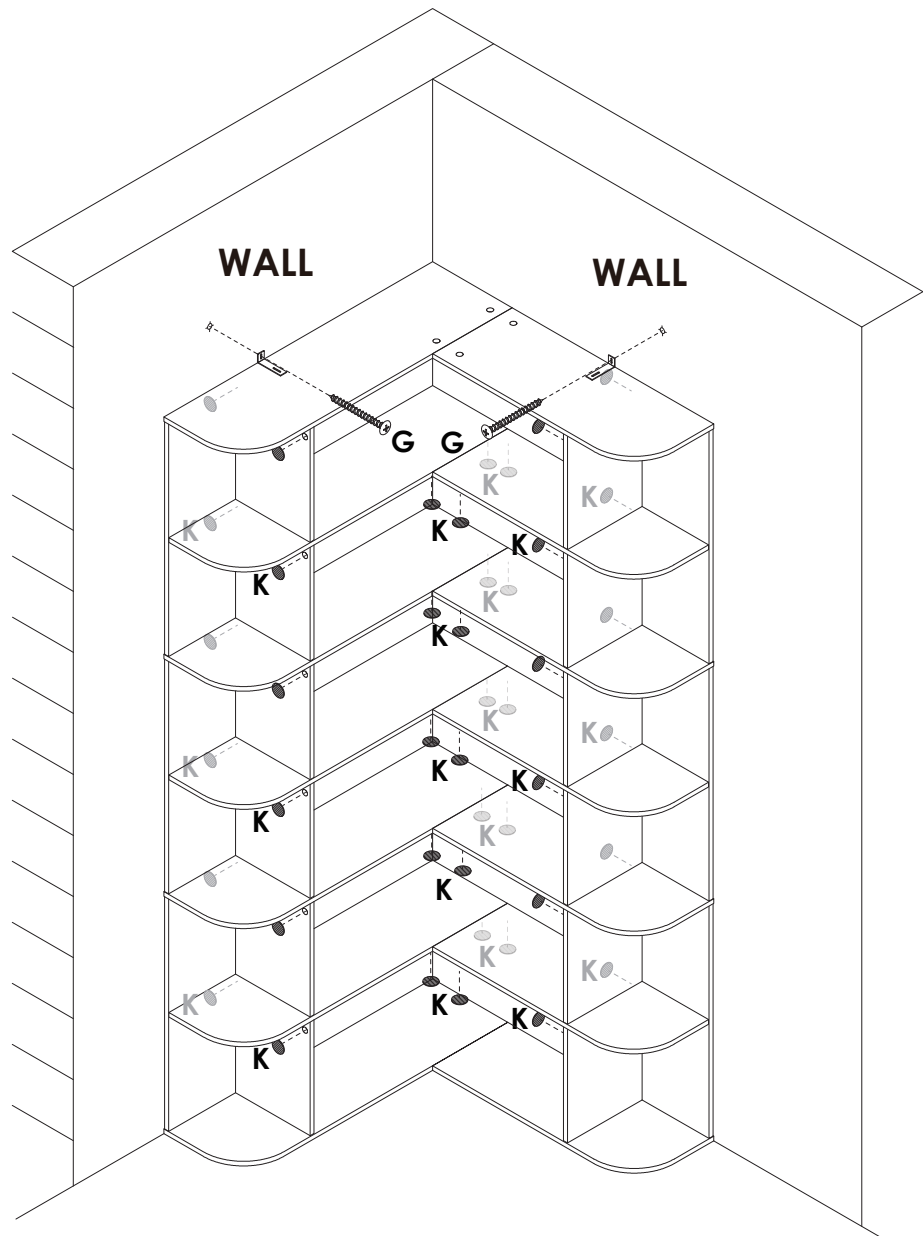
Move the cabinet to the required position, use the "G" long screw to fix the cabinet to the wall.



x44



x44



G x 2PCS



K x 44PCS



WARNING



Children have died from furniture tipover. To reduce the risk of furniture tipover:

- **ALWAYS** install Anti-tip device provided.
- **NEVER** put a TV on this product.
- **NEVER** allow children to stand, climb or hang on any drawers, doors, or shelves.
- **NEVER** open more than one drawer at a time.
- Place heaviest items in the lowest drawers.



***This is a permanent label.
Do not remove!***