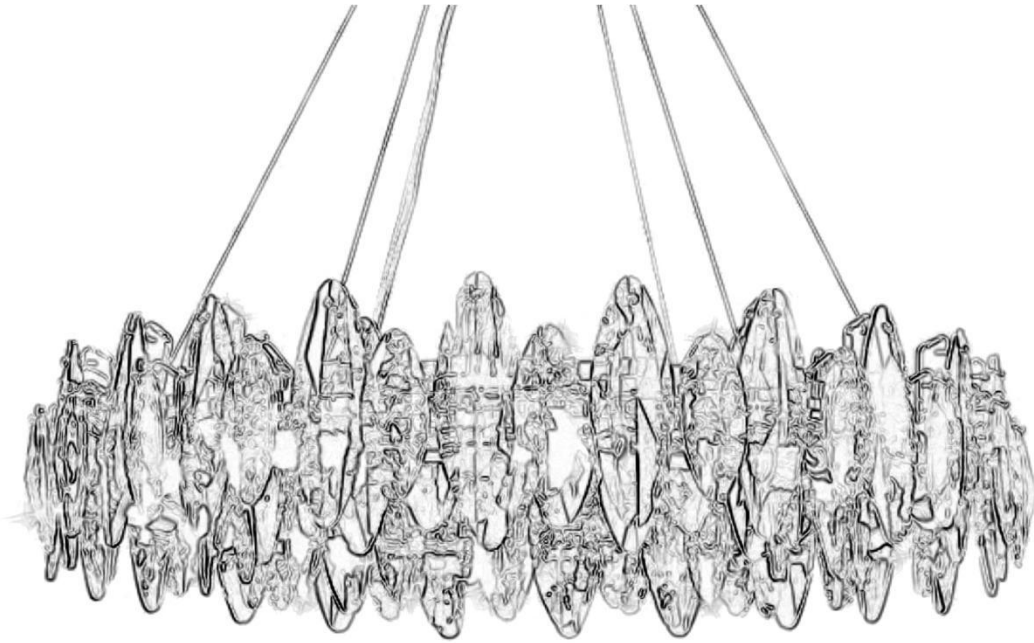


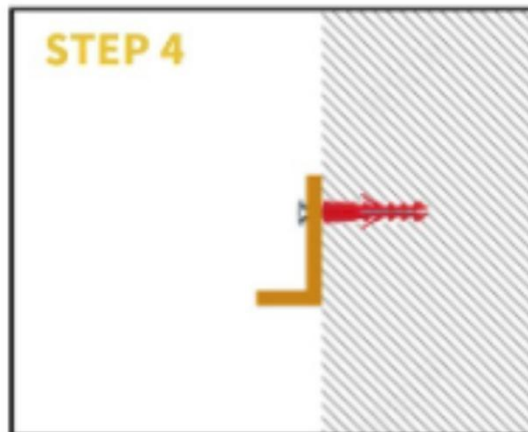
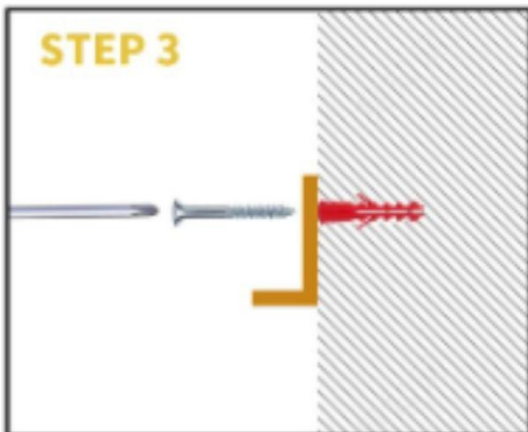
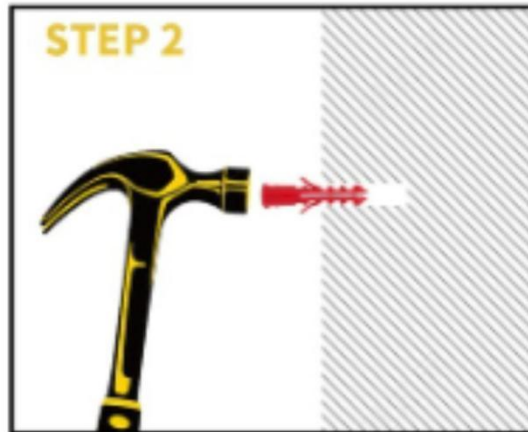
Assembly Instructions for **Model 2209096131**



Precautions Before Assembly:

Expansion Screw Installation Tutorial

INSTRUCTIONS



Assembly Method

The following tutorial is for reference only.

1. Referring to the product diagram, use the provided screws to secure the crystal lampshade components to the lamp frame.



2. Remove the Mounting Bracket from ceiling canopy of Fixture Body. Mark the drilling position on ceiling with the help of the Mounting Bracket.

Drill holes on the marks and stick the expansion anchors into the holes. Fix the Mounting Bracket to the expansion anchors with self-tapping screws. (The image below is for reference only.)



3. Connect the lamp wire marked "L" to the power supply's live wire, and connect the lamp wire marked "N" to the power supply's neutral wire.

4. Install the canopy onto the mounting brackets. (The image below is for reference only.)



The installation is complete.

Your fixture is now assembled and ready to use.