

# cage assembly instructions

Large Hamster Haven

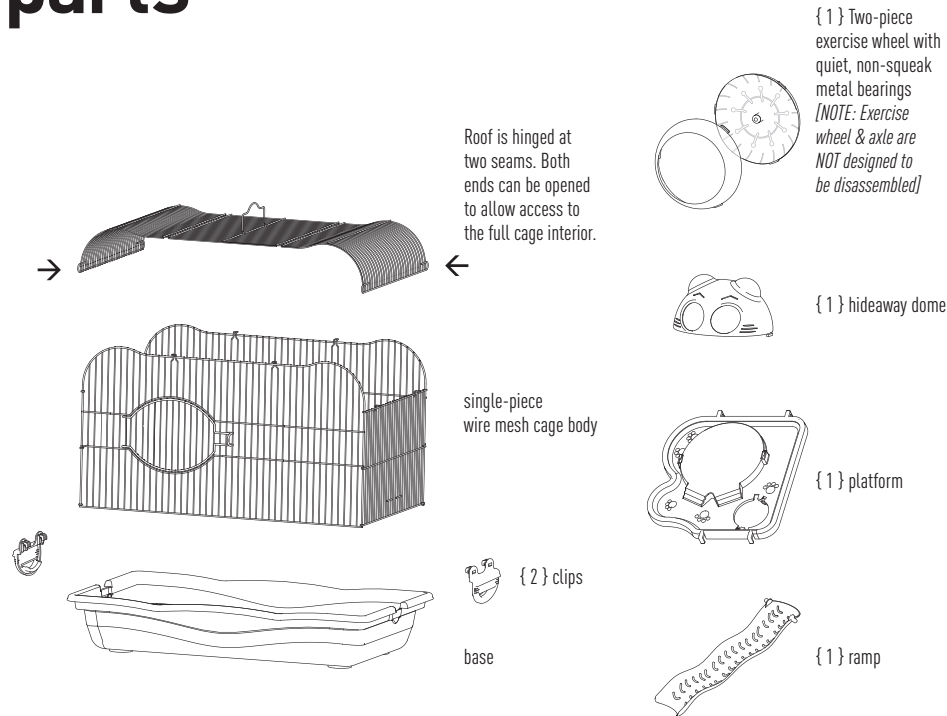
cage: 21 $\frac{5}{8}$ "L × 13 $\frac{3}{8}$ "W × 14 $\frac{1}{4}$ "H  
interior: 20"L × 11 $\frac{1}{16}$ "W × 13 $\frac{1}{2}$ "H

## getting started!

### READ THESE NOTES FIRST:

This is a very simple cage to assemble. Just check to make sure no parts have been damaged during shipment, and then have fun assembling your new Hamster Haven.

## parts

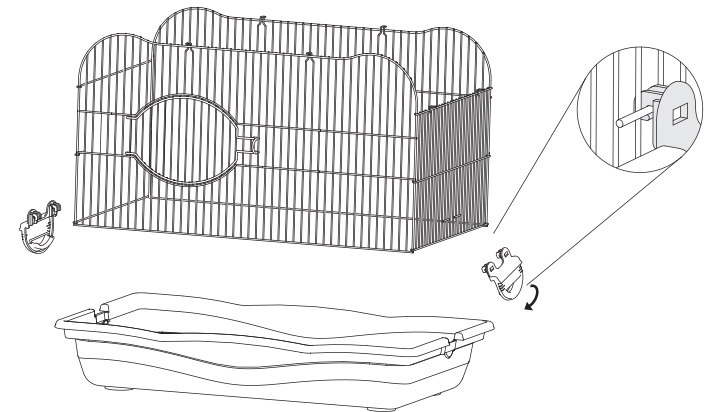


## steps

1

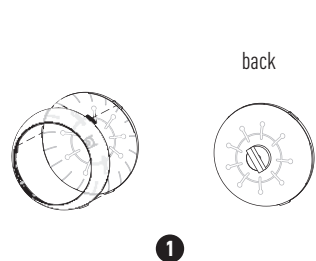
Open single-piece **cage body** until it forms a rectangle. Set the cage body into the **base**.

Attach the cage body to the base by hooking the **clips** onto the short horizontal wires on the cage sides (see detail), then rotating the clip down until it clicks into place on the base.

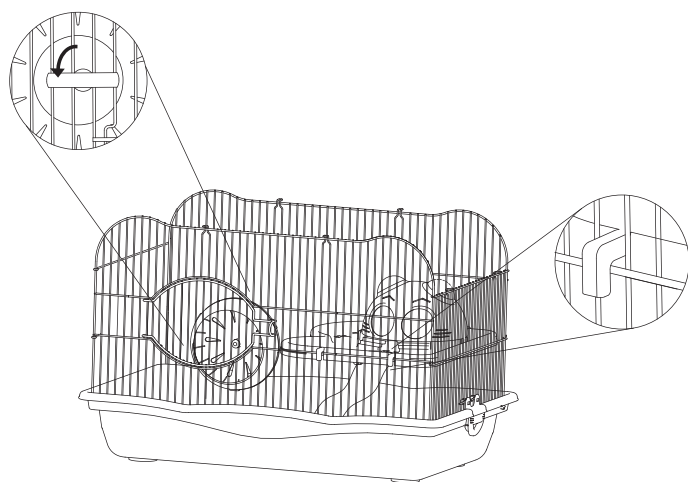
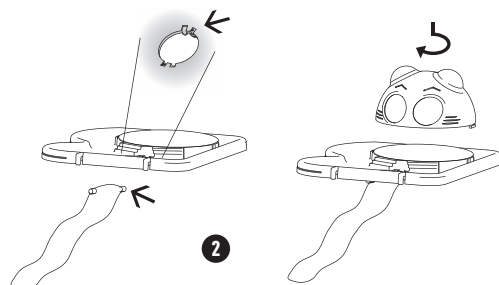


2

**1. Install the exercise wheel:** Attach the cover of the **exercise wheel** onto its back by aligning cover (tabs) with back (slots), and snapping together. On the back of the wheel is a handle. Position the wheel inside the cage near the base, align the handle vertically and pass it through the cage wires. Once the handle is outside the mesh, give it a 90° turn to secure the wheel in place.



**2. Install the platform:** First, install **ramp** into platform by inserting ramp from the bottom and twisting into indents in the platform opening (see detail). Second, add **hideaway dome** by aligning tabs on dome with openings in platform. Twist dome to lock tabs into place. Position **platform** at the right end of the cage (to avoid obstructing the front door) on the first horizontal wire up from base. Ramp from platform should rest on surface of the base.



3

To attach the **roof**, center it on the cage body, and catch outer-edge wires onto hooks along the cage body's upper rim (see details). Start with the center hooks first, then work on one end at a time to finish.



**Your Hamster Haven is now fully assembled!**

\*

#### CLEANING INSTRUCTIONS

Prolong the life of your cage with these recommendations:

- When cleaning the cage and parts, use a soft cloth or Teflon-resistant scrubber (such as **Cage Saver** non-abrasive scrub pad (#109)).
- Wash all parts with warm water and a mild environmentally-friendly, pet-friendly soap and rinse thoroughly.
- Hand dry all parts completely with a soft dry cotton cloth before reassembling the cage. Do not leave plastic parts to dry in the sun, as they may warp.

