

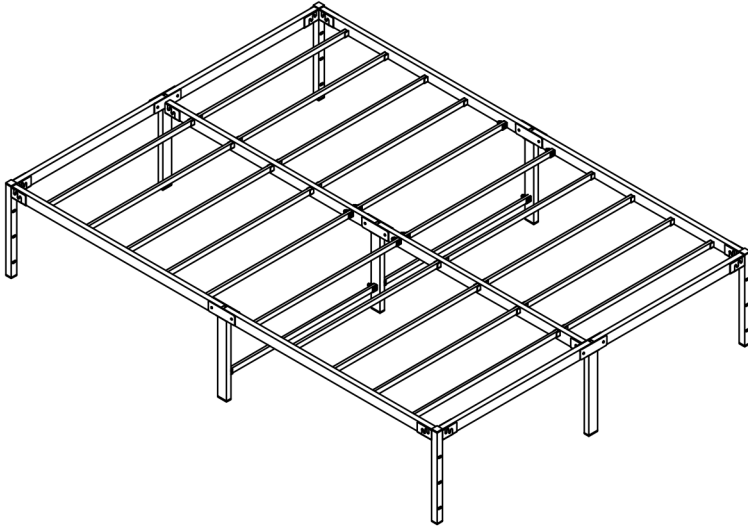
PLATFORM BEDS

USER MANUAL

We continue to be committed to provide you tools with competitive price.

"Save Half", "Half Price" or any other similar expressions used by us only represents an estimate of savings you might benefit from buying certain tools with us compared to the major top brands and does not necessarily mean to cover all categories of tools offered by us. You are kindly reminded to verify carefully when you are placing an order with us if you are actually saving half in comparison with the top major brands.

Platform Beds



NEED HELP? CONTACT US!

Have product questions? Need technical support? Please feel free to contact us.

This is the original instruction, please read all manual instructions carefully before operating. We reserves a clear interpretation of our user manual. The appearance of the product shall be subject to the product you received. Please forgive us that we won't inform you again if there are any technology or software updates on our product.



WARNING:

Please read this manual carefully before using the product. Failure to do so may result in serious injury. SAVE THIS MANUAL

ASSEMBLY PRECAUTIONS

1. Assemble only according to these instructions. Improper assembly can create hazards.
2. Wear ANSI-approved safety goggles and heavy-duty work gloves during assembly.
3. Keep the assembly area clean and well-lit.
4. Keep bystanders out of the area during assembly.
5. Do not assemble when tired or when under the influence of alcohol, drugs or medication.
6. The product capabilities apply to properly and completely assembled products only.
7. Assemble on a flat, level, hard and smooth surface capable of safely supporting the Platform Beds.
8. For additional information regarding the parts listed in the following pages, please refer to the Assembly Diagram of this manual. Unwrap and separate all parts in a clean work area.

USE PRECAUTIONS

TO PREVENT SERIOUS INJURY AND DEATH FROM TIPPING:

- 1. DO NOT SIT OR STAND ON THIS ITEM.**
2. This product is not a toy. Do not allow children to play with or near this item.
3. Do not exceed weight capacities. Please empty Platform Beds before moving.
4. Use only on a flat, level, hard and smooth surface capable of safely supporting a fully loaded Platform Beds.
5. Use as intended only.
6. Inspect before every use. Do not use if parts are loose or damaged.

TECHNICAL SPECIFICATIONS

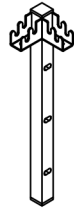
Model	2	3	4
Main Material	Steel	Steel	Steel
Product Dimensions (L*W*H)(mm)	1960*1423*360	2085*1578*360	2080*1980*360
Packing Size (L*W*H) (mm)	1010*340*125	1080*340*120	1080*345*125
Net Weight (kg)	16.72	17.67	19.96
Gross Weight (kg)	18	18.9	21.32

Model	5	6
Main Material	Steel	Steel
Product Dimensions(L*W*H)	1955*1420*460	2083*1578*460
Packing Size(L*W*H)	1008*343*118	1110*335*115
Net Weight (kg)	16.97	18.11
Gross Weight (kg)	18.3	19.5

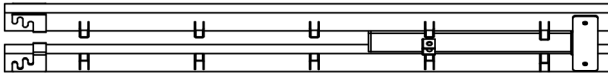
PACKAGE CONTENTS



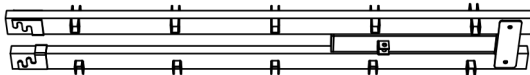
A x2pcs



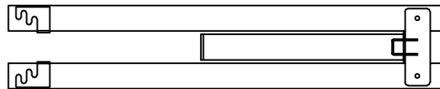
B x2pcs



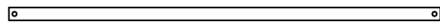
C x2pcs



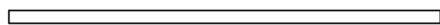
D x1pcs



E x2pcs



F x6pcs



G x16pcs



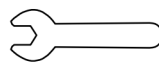
H x12pcs



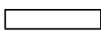
I x12pcs



J x1pcs



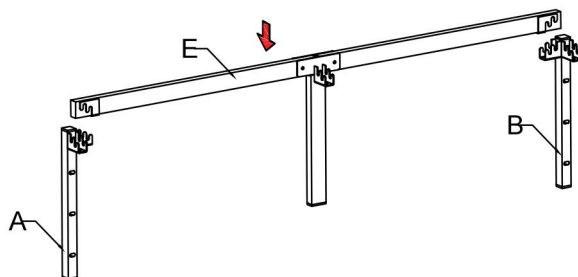
K x1pcs



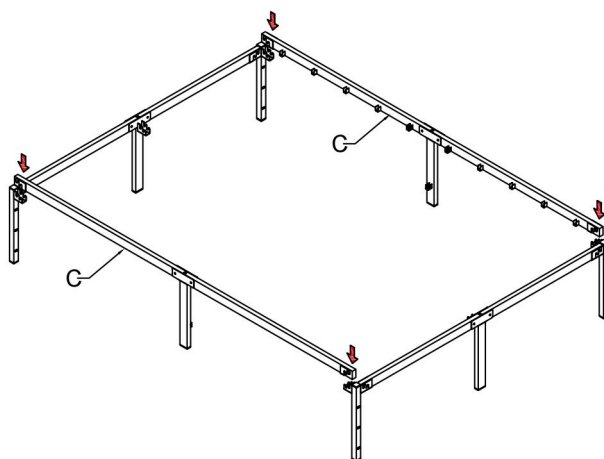
L x44pcs

ASSEMBLY STEPS

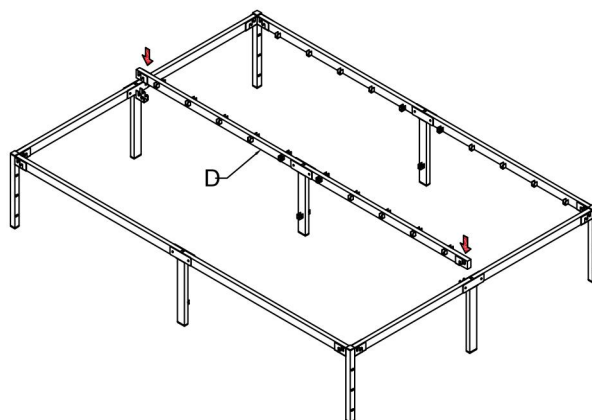
STEP1



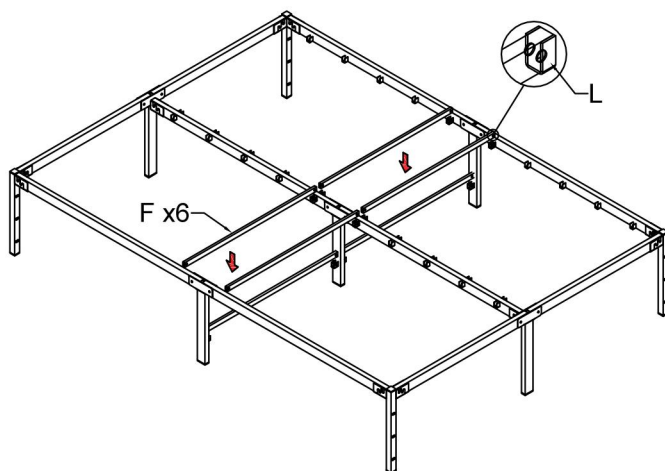
STEP2



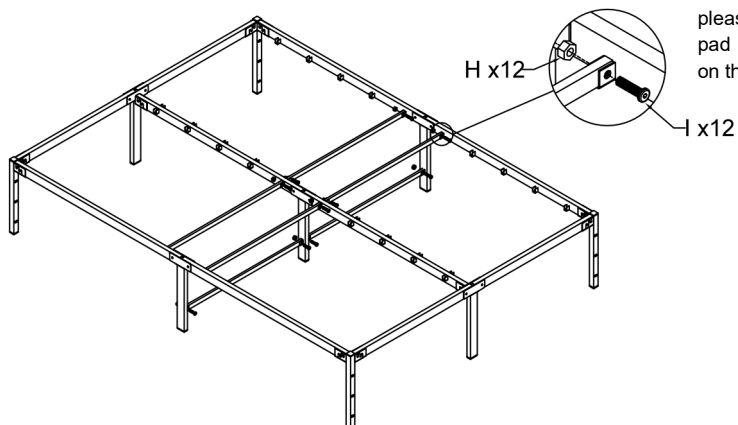
STEP3



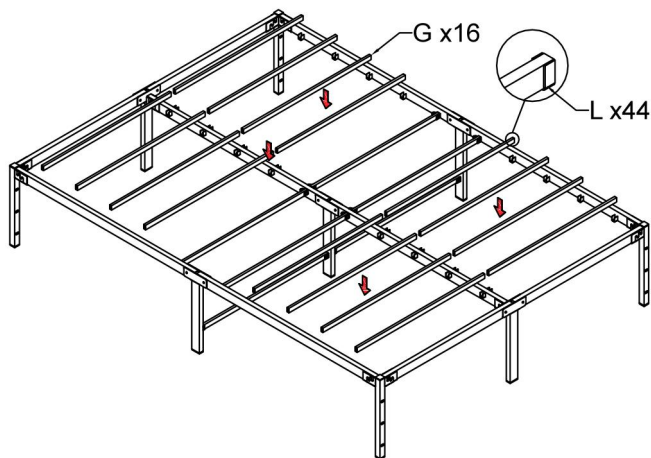
STEP4



STEP5



STEP6



COMPLETION

