



Safety Information

WARNING: READ AND UNDERSTAND ALL INSTRUCTIONS.

Failure to follow all instructions listed below, may result in electric shock, fire and/or serious personal injury.

WARNING:

ELECTRIC PRODUCT. Keep away from children. As with all electrical products, precautions should be observed during handling and use to reduce the risk of electric shock. If the supply cord is damaged, it must be replaced by the manufacturer, its service agent or similarly qualified persons in order to avoid a hazard.

Adults Note: Periodically examine this product for damage to the cord, housing or other parts that may result in the risk of fire, electric shock or injury. If the product is damaged, do not use it.

DANGER – To prevent electric shock, do not immerse in water; wipe clean with damp cloth. Immersing this product can result in an electric shock.

CAUTION: Do not attempt to inflate this unit during unusually strong winds. If it becomes too windy for safe operation, allow the unit to deflate and wait for safer conditions.

IMPORTANT SAFETY INSTRUCTIONS

WHEN USING ELECTRICAL PRODUCTS, BASIC PRECAUTIONS SHOULD ALWAYS BE FOLLOWED INCLUDING THE FOLLOWING:

READ AND FOLLOW ALL SAFETY INSTRUCTIONS.

- This is an electrical product - not a toy! To avoid risk of fire, burns, personal injury, and electric shock, it should not be played with or placed where small children can reach it.
- Do not use seasonal products outdoors unless marked suitable for indoor and outdoor use. When products are used in outdoor applications, connect the product to a Ground Fault Circuit Interrupting (GFCI) outlet. If one is not provided, contact a qualified electrician for proper installation.
- This seasonal use product is not intended for permanent installation or use.
- Do not mount or place near gas or electric heaters, fireplaces, candles, or other similar sources of heat.
- Do not secure product wiring with staples or nails or place on sharp hooks or nails.
- Do not let lamps rest on the supply cord or on any wire.
- Unplug the product when leaving the house, when retiring for the night, or if left unattended.
- Do not use this product for other than its intended purpose.
- Do not hang ornaments or other objects from cord, wire, or light string.
- Do not close doors or windows on the product, or extension cords, as this may damage the wire insulation.
- Do not cover the product with a cloth, paper, or any

material not part of the product when in use.

- Do not place the product against carpeting, furniture, or any other fabric when in use.
- Read and follow all instructions that are on the product or provided with the product.

SAVE THESE INSTRUCTIONS USE AND CARE INSTRUCTIONS

1. When the product is placed on a live tree, the tree should be well maintained and fresh. Do not place on live trees in which the needles are brown or break off easily. Keep the tree holder filled with water.
2. If the product is placed on a tree, the tree should be well secured and stable.
3. Before using and reusing, inspect the product carefully. Discard any products that have cut, damaged or frayed wire insulation cords, cracks, lamp holders or enclosures, loose connections, or exposed copper wire.
4. When storing the product, carefully remove the product from wherever it is placed, including trees, branches, or bushes, to avoid any undue strain or stress on the product conductors, connections and wires.
5. When not in use, store neatly in a cool, dry location protected from sunlight.

WARNING

To reduce the risk of fire and electric shock:

1. Do not install on trees having needles, leaves or branch coverings of metal or materials which look like metal, and.
2. Do not mount or support wires in a manner that can cut or damage wire insulation.

This power unit is intended to be correctly orientated in a vertical or floor mount position.

WARNING

Remove all plastic fasteners and tags. These are part of the packaging and should be discarded.

For indoor and outdoor use.

This item is not a toy. For decorative purposes only.

TROUBLESHOOTING CHECKLIST

If your Airblown® Inflatable is not inflating, the problem may be:

1. The power source is disabled or the cord may be unplugged.
2. The zipper may not be securely fastened, sealing the Airblown® Inflatable and preventing air from escaping.
3. Something may be blocking the fan's air intake.

NOTE: ONCE FAN IS UNPLUGGED AND STOPS BLOWING, YOUR Airblown® Inflatable WILL DEFLATE.

The lights within Airblown® are powered by LED lights which are designed to operate longer than traditional bulbs, These LED lights are not replaceable.

WARNING

This device complies with Part 15 of the FCC Rules. Operation is subject to the following two conditions: (1) this device may not cause harmful interference, and (2) this device must accept any interference received, including interference that may cause undesired operation.

CAUTION: Changes or modifications not expressly approved by the party responsible for compliance could void the user's authority to operate the equipment.

NOTE: This equipment has been tested and found to comply with the limits for a Class B digital device, pursuant to Part 15 of the FCC Rules. These limits are designed to provide reasonable protection against harmful interference in a residential installation. This equipment generates, uses, and can radiate radio frequency energy and, if not installed and used in accordance with the instructions, may cause harmful interference to radio communications. However, there is no guarantee that interference will not occur in a particular installation. If this equipment does cause harmful interference to radio or television reception, which can be determined by turning the equipment off and on, the user is encouraged to try to correct the interference by one or more of the following measures:

- Reorient or relocate the receiving antenna.
- Increase the distance between the equipment and receiver.
- Connect the equipment into an outlet on a circuit different from that to which the receiver is connected.
- Consult the dealer or an experienced radio/TV technician for help.

CAUTION:

1. For temporary (90 days max) installation and use only.
2. To reduce the risk of fire or electric shock, do not attempt to replace lamps or modify wiring or product.
3. Do not place near standing areas of water, such as ponds and pools.
4. To reduce the likelihood of excessive heat and possible damage, use only decorative lamp accessories packaged with this product or marked for use with this product.
5. To reduce the risk of fire and electric shock, use only the power supply Model MTR-17130 manufactured by (QY) that was provided with this product.

FREQUENTLY ASKED QUESTIONS (FAQ's)

1. *Can I continually run my Airblown® Inflatable?*

Yes, you can run your Airblown® Inflatable during the day and at night. We recommend that you turn off your Airblown® Inflatable when leaving the immediate area and when retiring for the evening. Otherwise, your Airblown® Inflatable is designed to run continually as you see fit.

2. *What happens if my Airblown® Inflatable becomes torn?*

Rips in the Airblown® Inflatable can be sewn by hand (no special thread is required) or taped with clear packing tape.

3. *How can I clean my Airblown® Inflatable?*

Wipe clean with a damp cloth and allow to dry before storing away. Use mild detergent if necessary.

4. *When I unplug my Airblown® Inflatable, it deflates. Why is this?*

Your Airblown® Inflatable will not stay inflated unless it is plugged in and the fan is blowing air.

5. *How much electricity does an Airblown® Inflatable consume?*

It uses about as much energy as a standard string of holiday lights.

6. *What is the best way to store my Airblown® Inflatable?*

Store in a bag, box or other storage container and keep in a cool, dry location.

specifically for the installation of wiring and clearances from power and lighting conductors.

5. Installation work and electrical wiring must be done by qualified person(s) in accordance with all applicable codes and standards, including fire-rated construction.
6. Do not install or use within 10 feet of a pool.
7. Do not use in a bathroom.

8. **WARNING: Risk of Electric Shock.**

When used outdoors, install only to a covered Class A GFCI protected receptacle that is weatherproof with the power unit connected to the receptacle. If one is not provided, contact a qualified electrician for proper installation. Ensure that the power unit and cord do not interfere with completely closing the receptacle cover.

9. **WARNING: Risk of Fire.** Installation involves special wiring methods to run wiring through a building structure. Consult a qualified electrician.

10. If the connector of this driver does not properly fit into the connector of the lighting string, do not modify the product and discard product if the connector is damaged.

11. **WARNING:** Not for use with receptacles that are weatherproof only when the receptacle is covered (attachment plug cap not inserted and receptacle cover closed).

SAVE THESE INSTRUCTIONS - This manual contains important safety and operating instructions for power units.

IMPORTANT SAFETY INSTRUCTIONS

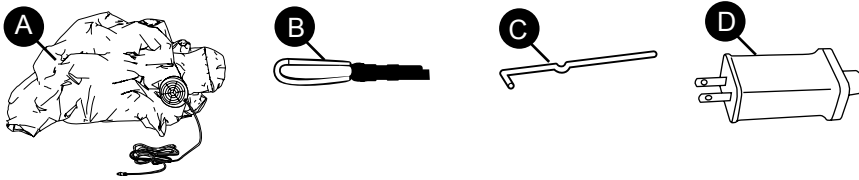
When using electrical products, basic precautions should always be practiced including the following:


1. **READ AND FOLLOW ALL SAFETY INSTRUCTIONS.**
2. Read and follow all instructions that are on the product or provided with the product.
3. Do not use an extension cord.
4. Reference the National Electrical Code, ANSI NFPA 70,

These Instructions Are For These Items

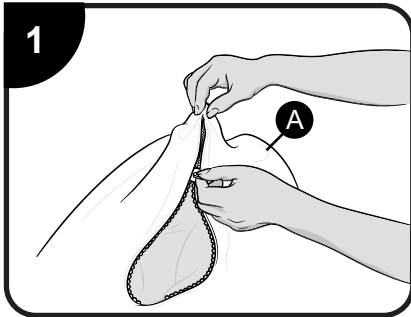
74039	52922	60919	228877
228880	228896	228923	229037
22933	228435	228439	228631
228679	228680	228681	228684
228685	227123	227191	228094
225885	226228	226230	226231
226676	225039	225041	225046
225176	225494	225499	225884
222965	223252	223450	224771
224991	221696	221902	110007
110817	111966	112571	113074
113963	114904	115169	115939
116015	116017	116018	116021
116464	116466	116485	116509
116518	116883	117169	117565
117566	117573	117629	117722
117882	118073	119003	119004
119007	119046	119258	119259
119261	119307	13057	19373
35474	37344	39049	83440
118322	226229	70445	226226
226227	110647	110651	111088
111798	113264	114906	114959
114962	117074	117525	117586
118281	118992	12828	15570
35271	81246	220310	220311
224993	224994	224999	225000
225001	225597	225598	225599
72187	72189	222500	225042
59569	227155	220657	225112
227906	880548	72186	880049
73774	15375	35847	37342
880549	113413	117963	119342
225471	112536	117111	118994
119148	119150	119297	39420
39911	119388	119394	86454
221264	224763	226221	226471
226493			

Package Contents

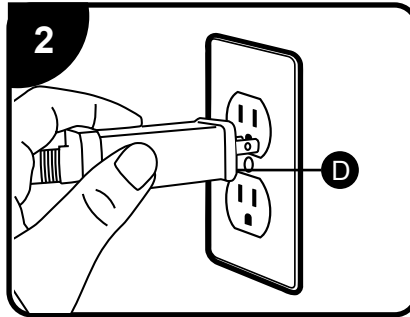


Part	Description	Quantity
A	Airblown [®] Inflatable	1
B	Tethers	2
C	Stakes	4
D	UL - listed Power supply Input: 120-150VAC ~ 50/60Hz Output: 12 V $\overline{=}$ 1.0A 	1

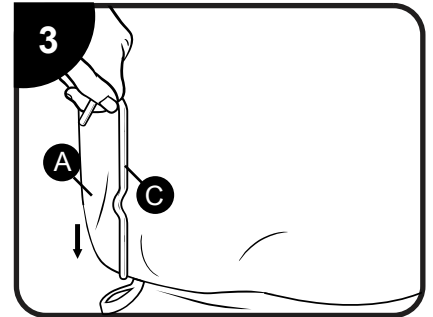
Assembly Instructions



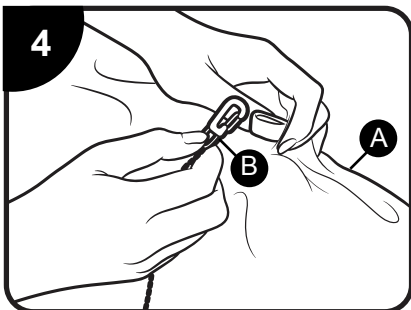
Ensure that the air intake on the inflatable (A) unit is clear of fabric and other obstructions and that the zipper is fully closed. Some inflatables have more than one zipper.



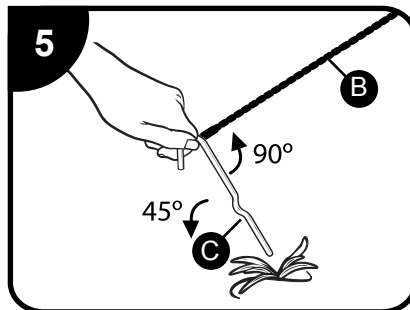
Connect UL-Listed power supply (D) into connection of fan, plug power supply into standard wall outlet.



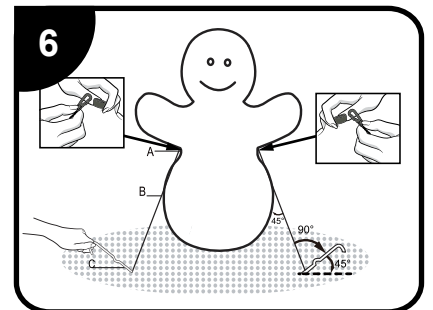
Using the loops attached at the bottom of the Inflatable unit (A), insert stakes (C) into the ground. Adjust weight-bag at the base to position your Inflatable as desired.



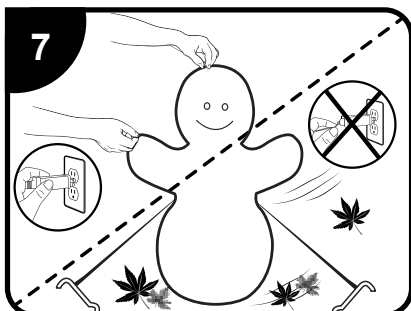
Once fully inflated, clip the nylon tethers (B) to each of the attached nylon loops on the side of the inflatable (A).



Drive the stakes (C) into ground at a 45-degree angle.



For maximum stability, bring tether down to a 45-degree angle from the inflatable as shown in the illustration. In order to achieve this you may need to wrap the excess tether around the top of the stake.



Do's and Don'ts

1. Do check your inflatable daily and adjust to stand up straight.
2. Do not attempt to operate your inflatable in unusually strong winds. (see caution)
3. Do not unplug by pulling on cord. For faster deflation, unzip zipper after unplugging power supply.

Visit WWW.GEMMY.COM for more information.

©2022 GEMMY INDUSTRIES CORP.

117 WRANGLER DRIVE, SUITE 100

COPELL, TX 75019 U.S.A.

1 (800) 274-6717

MADE IN CHINA / PRINTED IN CHINA