

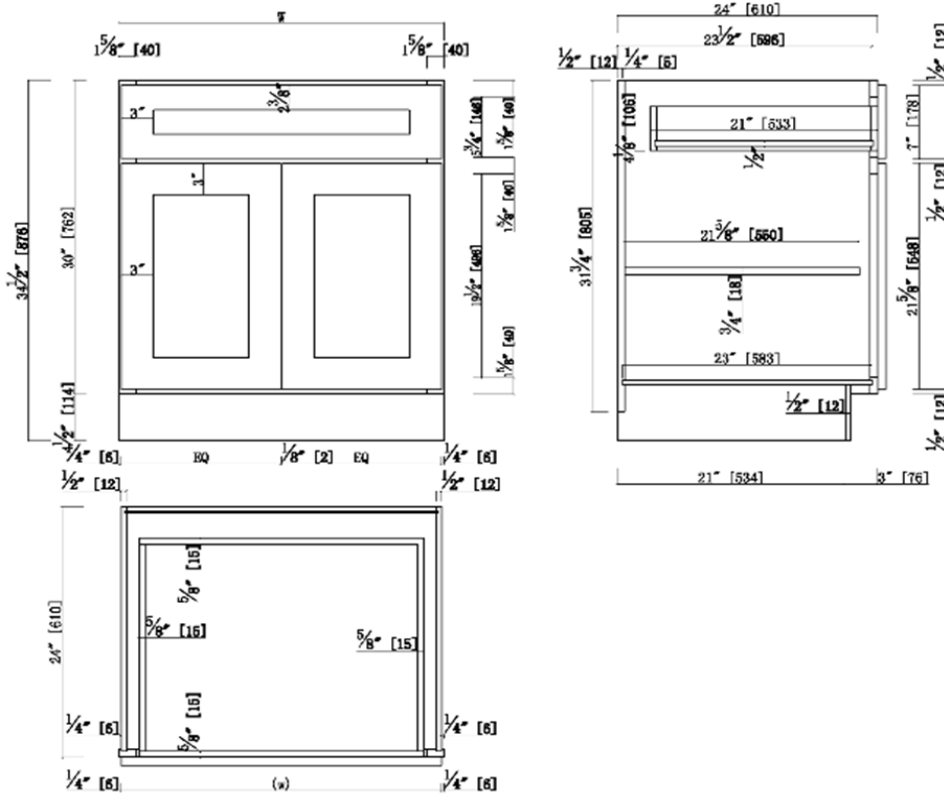
# Two Door One Drawer Base Kitchen Cabinet

## Specifications

- 3" Wide Shaker Door
- 3/4" Solid maple face frame, Fully overlay with 1/4" reveal
- MDF with wood veneer for door center & drawer center for espresso finish
- 3/4" solid maple door frame & drawer frame for espresso finish
- 3/4" Premium HDF door & drawer front for white finish
- Soft-closing hinge, 6 way adjustable
- Under-mounted epoxy glide, soft-closing glide can be offered for upgrade option.
- 21" Solid Wood Dovetail Drawers
- 1/2" plywood with poplar veneer for side panels, bottom panels
- Metal Clips connectors
- RTA construction
- CARB P2 compliant



## Dimensions



## Warranty & Compliances

Warranty Limited 1 year warranty  
 California 93120 Compliant



## Finishes/Colors

Espresso Finish	White Finish
24" x 24" x 34.5"	24" x 24" x 34.5"
27" x 24" x 34.5"	27" x 24" x 34.5"
30" x 24" x 34.5"	30" x 24" x 34.5"
33" x 24" x 34.5"	33" x 24" x 34.5"