

24" FENNEL DOUBLE BOWL UNDERMOUNT SINK

Cat. No

KSSDB2530-SS



W: 23"

D: 18- $\frac{3}{4}$ "

H: 7"

***Please do NOT cut hole without
template or actual product.**

Interior Dimensions:

Large

Basin Interior: 13- $\frac{3}{4}$ " W x 17" D

Basin Depth: 6- $\frac{1}{2}$ "

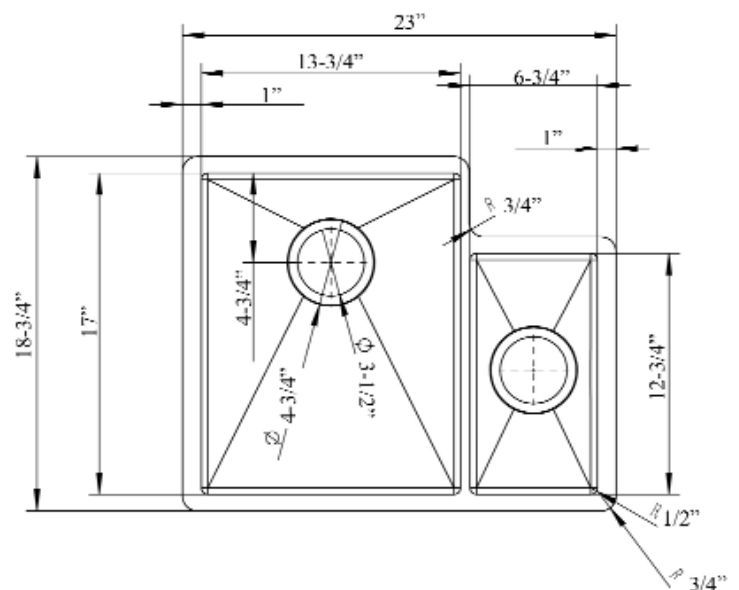
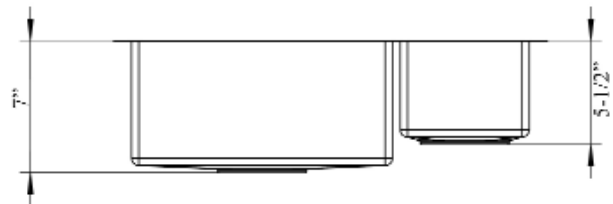
Small

Basin Interior: 6- $\frac{3}{4}$ " W x 12- $\frac{3}{4}$ " D

Basin Depth: 5- $\frac{1}{2}$ "

Features:

- ▶ Solid 16 gauge, 304 grade metal construction
- ▶ Coated for sound insulation
- ▶ Easy to clean tight radius corners
- ▶ Mounting clips and template included
- ▶ Lip is 1" wide
- ▶ 3- $\frac{1}{2}$ " drain
- ▶ 70/30 offset
- ▶ Drain sold separately
- ▶ Wire grid available to purchase separately,
KSSDB2530-WIRE



Dimensions of fixture are nominal and may vary within the range of tolerances established by ANSI Standard A112.19.2. Dimensions and specifications subject to change without notice.