

ASSEMBLING & INSTALLATION INSTRUCTIONS

For Wall Mount Light Fixture

WARNING! SHUT POWER OFF AT FUSE OR CIRCUIT BREAKER .

MOUNTING THE FIXTURE

Installation (see fig.1)

1. Disconnect power at main electrical panel before installation.
2. Attach the mounting plate to the junction box using two junction box screws. The side of the mounting plate marked "GND" must face out.
3. Guide fixture wires through hole in center of mounting plate.
4. Follow wiring instructions carefully (see fig.2)
- 5. Install the light bulbs (F, E11 mini candela , 75W , no included) in accordance with the fixture's specifications. NOTE: DO NOT EXCEED THE MAXIMUM WATTAGE RATING!**
6. Attach the glass shield (D) to the lamp holder, aligning the flute with the screw hole of the lamp holder in side, then lock it securely with screw(E) .
7. Insert the glass shade (B) to the fixture body (C), aligning the hole with the screw hole of the hook in side, then lock it securely with knob screw(A) .
8. Attach the fixture body (C) over the mounting plate , aligning the backplate holes with screw hole of the mounting plate in side, then lock it securely with mounting screw.

Wiring (see fig.2)

1. Connect the electrical wires as follows. Connect the Black wire from the fixture to the black house (hot) Wire. Connect the white wire from the fixture to the white (neutral) house wire. Make sure all wire nuts are secured. You may wrap the connections with electrical tape. If your outlet box has a ground wire (green or bare copper) connect fixture's ground wire to it. Otherwise attach the bare copper fixture wire to the green ground screw on the mounting plate.
2. Tuck the wire connections neatly into the wall junction box.

Fig.1

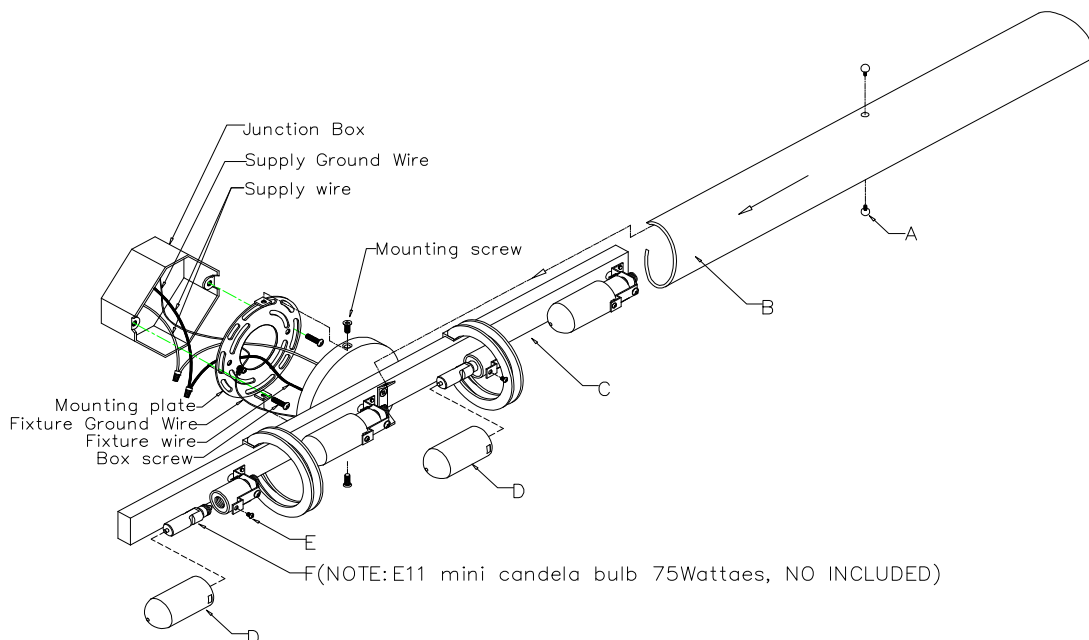


Fig.2

FIGURE WIRES Black or Smooth		FIGURE WIRES White or Ribbed		FIGURE WIRES Bare Copper (Ground)	
HOUSE WIRES Black (Hot)		HOUSE WIRES White (Neutral)		HOUSE WIRES Green or Bare Copper (Ground)	



Listed