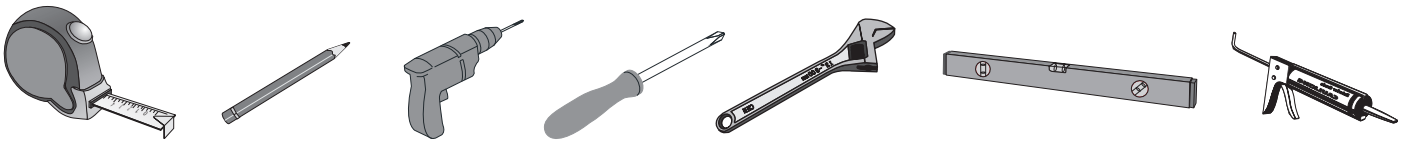
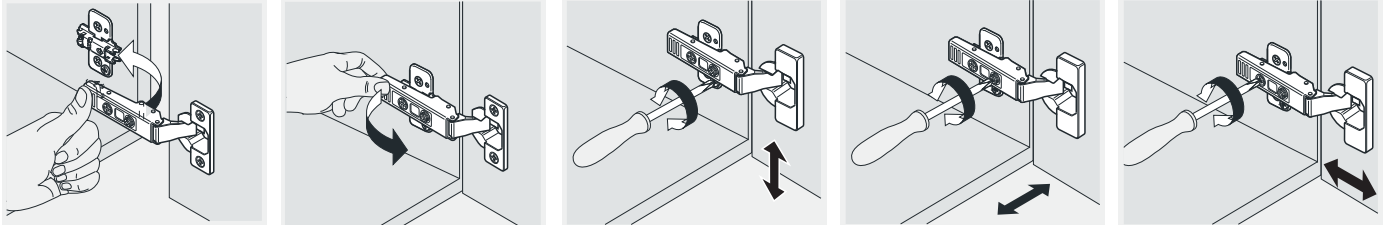




## Erecting Tool/Outils d'assemblage



### Install, Remove, Adjust Of Top Fast Loading Hinge / Montage, démontage et réglage de la charnière de chargement rapide



Install/l'installation

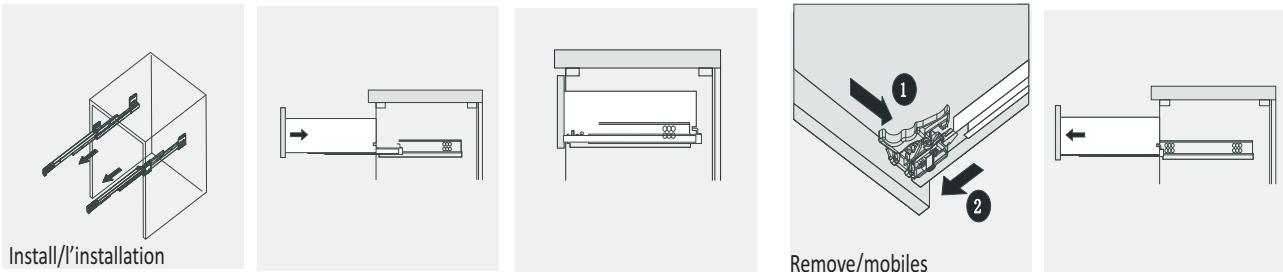
Remove/mobiles

Adjust the height/Hauteur de réglage

adjust the lateral/Réglage latéral

Adjust the depth/Profondeur de réglage

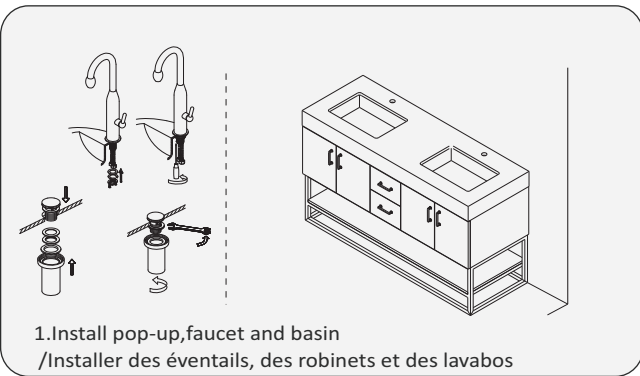
### Installation Instruction/Instructions d'installation



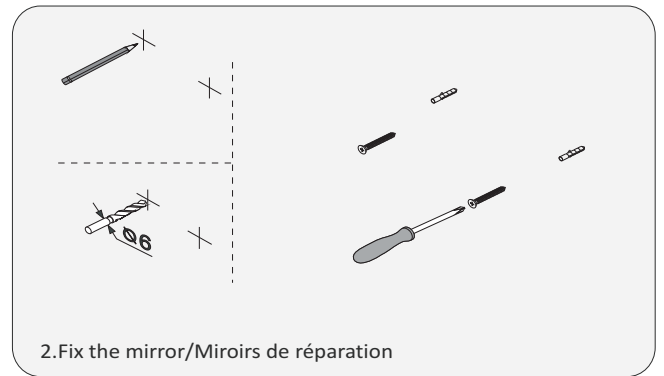
Install/l'installation

Remove/mobiles

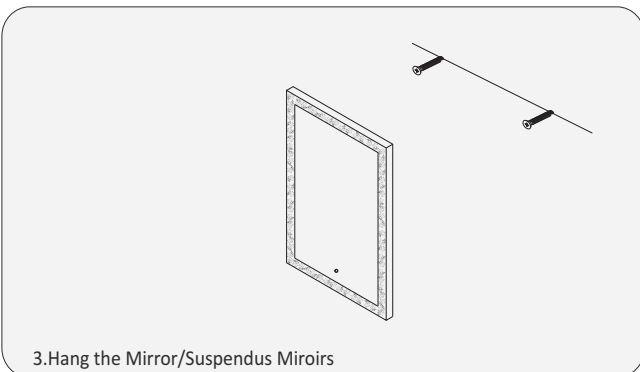
### Drawer Adjust/ tiroir ajuster



1. Install pop-up, faucet and basin  
/ Installer des éventails, des robinets et des lavabos



2. Fix the mirror/Miroirs de réparation



3. Hang the Mirror/Suspendus Miroirs