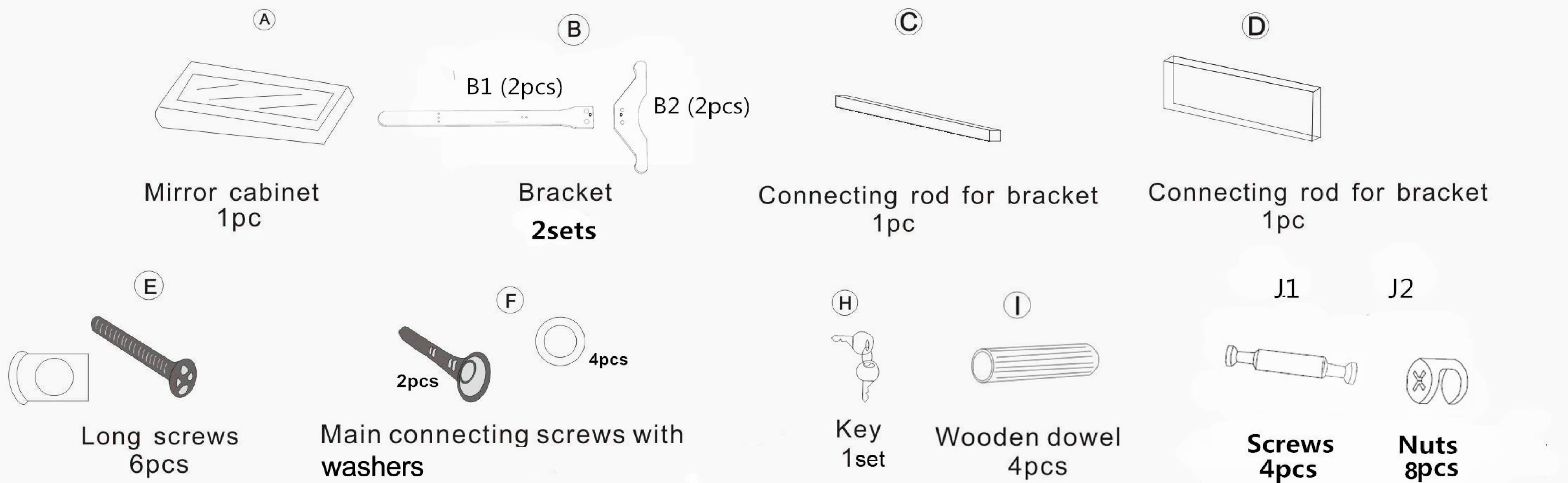


# Jewelry Mirror Assembly Instructions

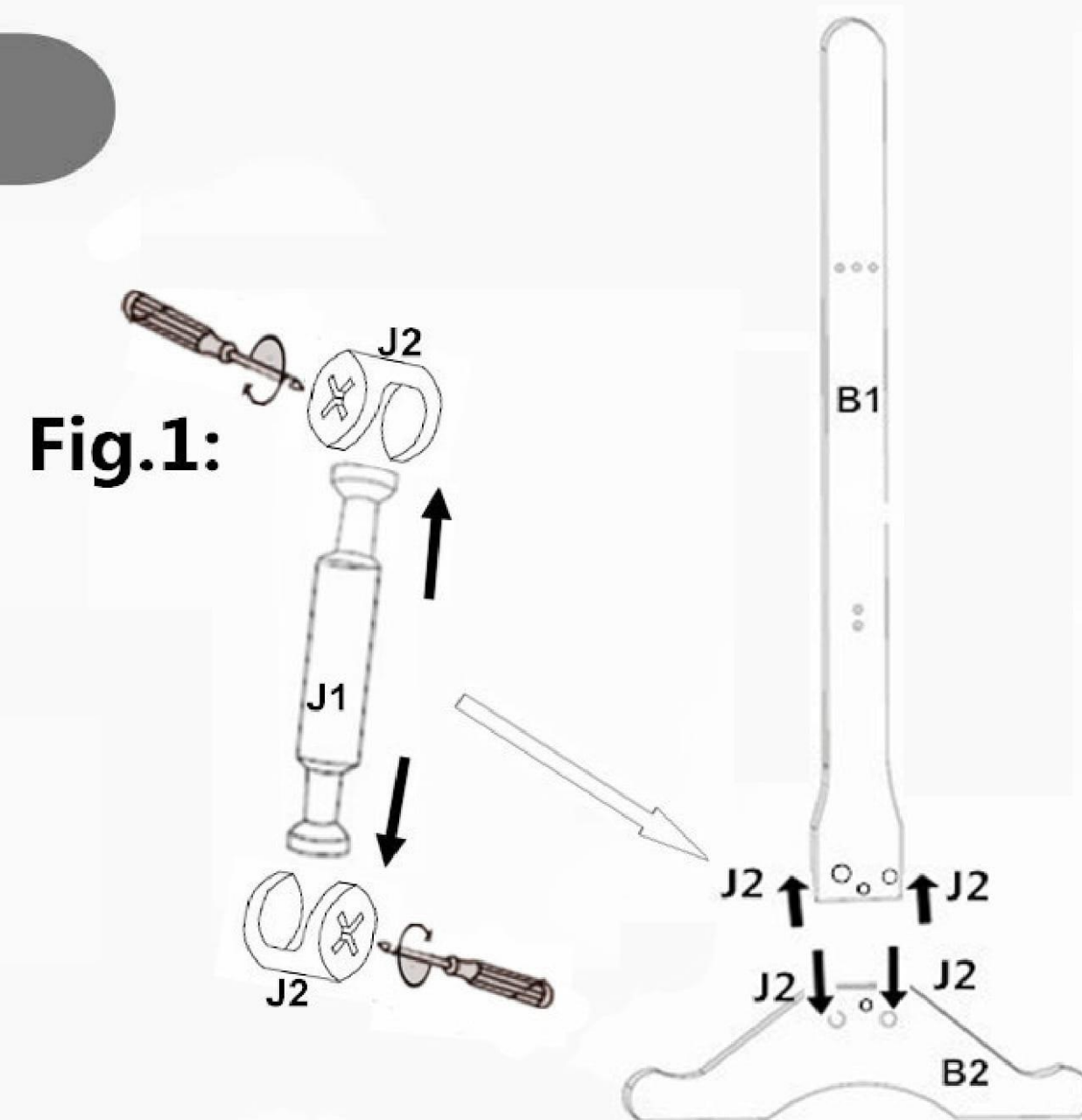
Note: For your safety and convenience, assembly by two person is recommended

## Parts and hardware list

Please ensure you have all parts and hardware before assembling the product.



## Steps to Assemble

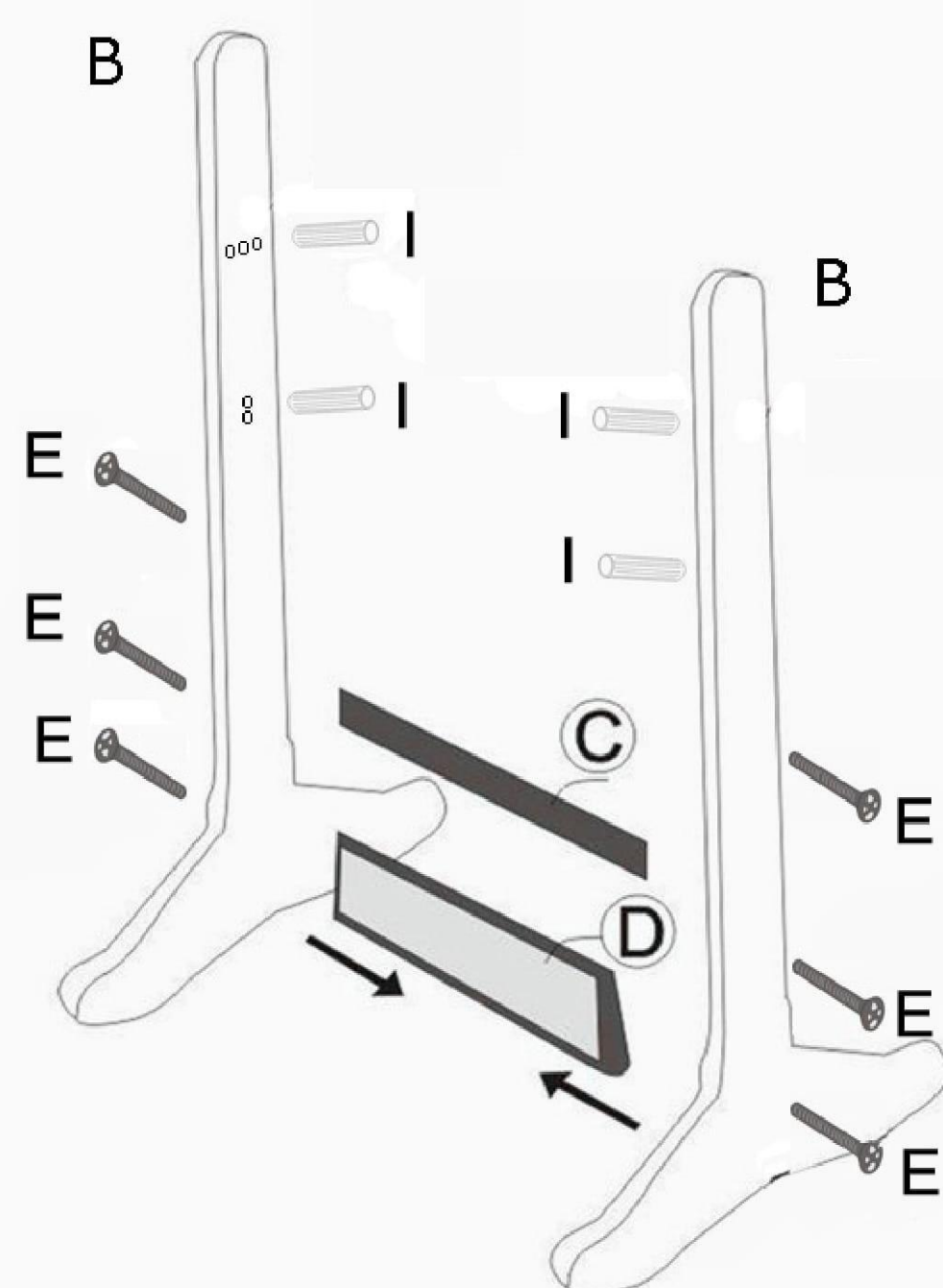


### Step 1:

Insert 2 pcs of Screws (J1) into the holes of Bracket (B1&B2), each Screws (J1) link to both B1&B2.

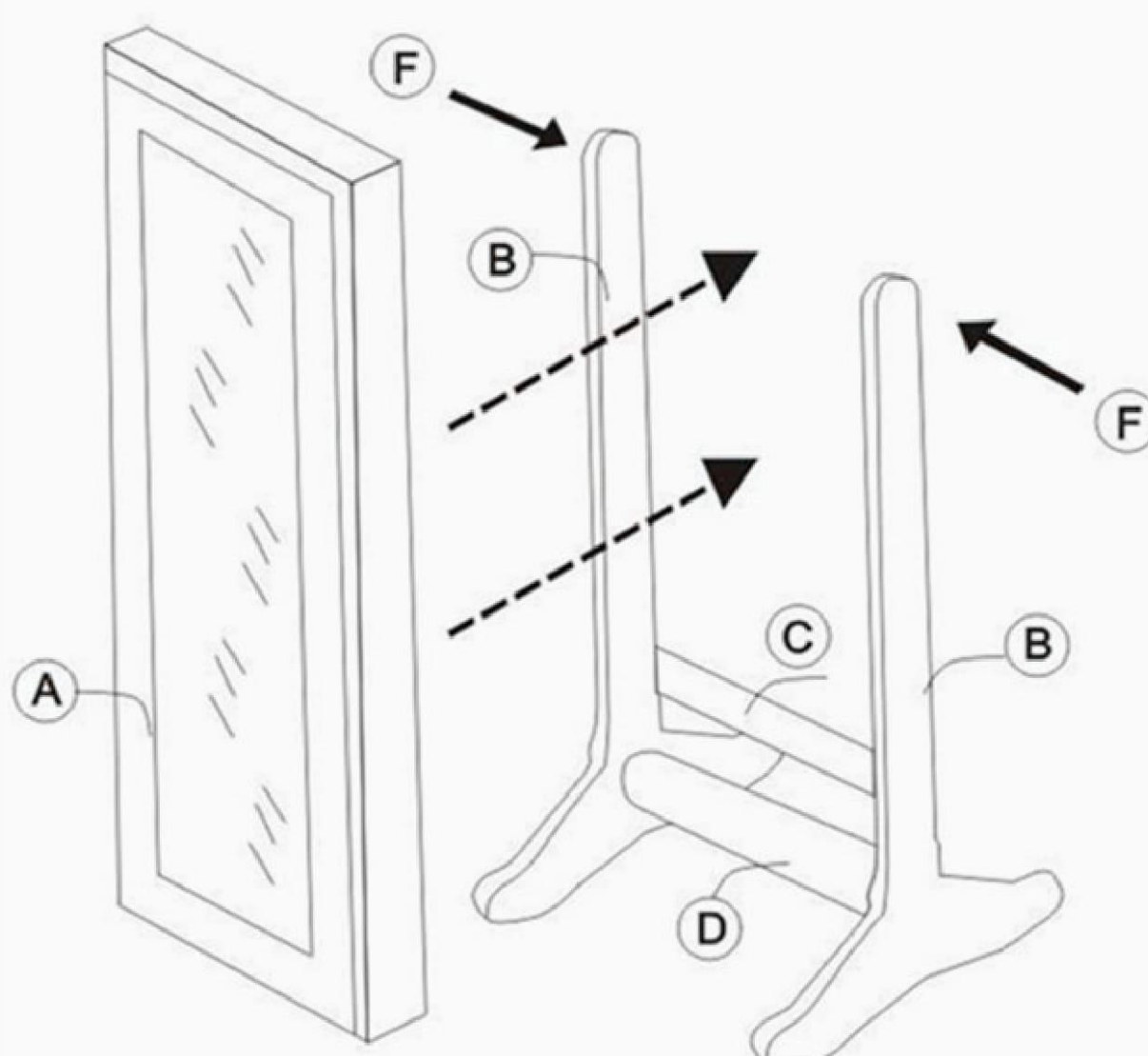
Put 4 pcs of Nuts (J2) into holes of Bracket (B1&B2), adjust the angle to keep stable.

Tips: Adjust J2 in an angel as figure 1 before insert into holes of Bracket (B1&B2).



### Step 2:

Align 2pcs of Brackets (B) with connectors (C) and (D), screws in place with Screws (E). Insert 2pcs Wooden Dowel (I) into each bracket to fix the angle as indicated.



### Step 3:

Before putting the main mirror cabinet, ensure the main mirror cabinet is already locked. Once aligned and in place, use Screws (F) and washer to secure.

### Step 4:

Once assembled, adjust the cabinet to the desired angel by using the Wooden Dowel (I) .Two person assembly is recommended

**Warning: This is not a toy. Keep children away from jewelry mirror**

