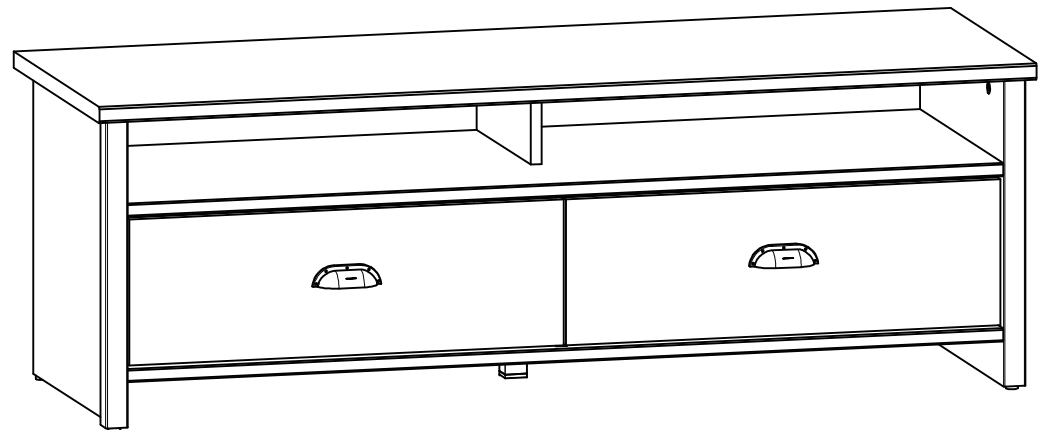


TV STAND

ASSEMBLY INSTRUCTIONS

- Please DO NOT dispose packaging material till you are satisfied with the finished product.
- Place all the parts on a clean and smooth surface such as rug or carpet to avoid the parts being from dirty or scratched.
- Before you begin assembly, please read and follow the assembly instructions step by step process for successful assembly completion.

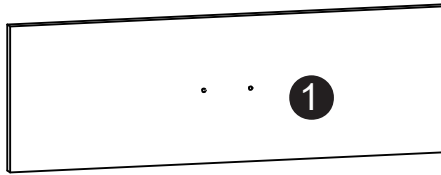
**PLEASE DO NOT RETURN TO THE STORE
IF YOU EXPERIENCE ANY ISSUES OR NEED HELP
WITH THIS PRODUCT, PLEASE CALL OUR**



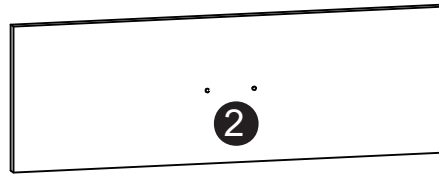
WARNING

- To prevent injury and damage to this unit, PROHIBIT climbing on it.
 - This product is designed for home use and not intended for commercial use.
 - Recommended # of people needed for handling: 2 (however it is always better to have an extra hand.)
 - THIS INSTRUCTION BOOKLET CONTAINS **IMPORTANT** SAFETY INFORMATION. PLEASE READ AND KEEP FOR FUTURE REFERENCE.
-

PARTS



S607-0005
QTY:1



S607-0006
QTY:1



S607-1005
QTY:1



S607-1006
QTY:1



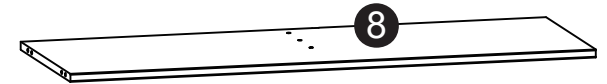
S607-1007
QTY:1



S607-1008
QTY:1



S607-2003
QTY:1



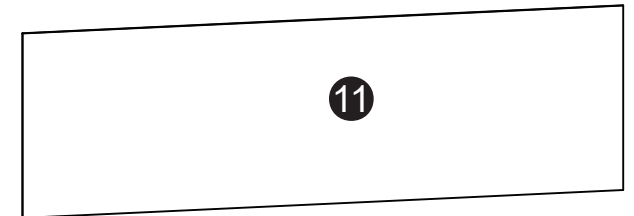
S607-3002
QTY:1



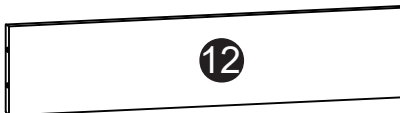
S607-3003
QTY:1



S607-9007
QTY:2



S607-9008
QTY:1



ZS3-5622
QTY:2



ZS4-503
QTY:2



ZS4-504
QTY:2

NOTICE TO CONSUMER:
Please do not dispose off packaging materials until product are fully tested, to prevent loosing of Parts or Hardware.

HARDWARE



W5\CL
2 x



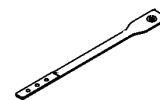
W5\CR
2 x



W5\DL
2 x



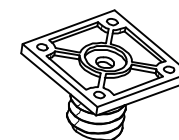
W5\DR
2 x



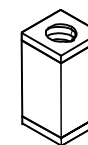
N26
1 x



C583
2 x



K38\3
1 x



K38\8
1 x



Z1
1 x



F1
22 x



F9
4 x



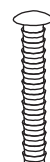
P6
8 x



E1
2 x



R42
22 x



F25
8 x



P55
28 x



P38
4 x



J1
4 x



P38
1 x



E3
9 x



E2
1 x



E19
8 x



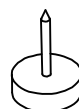
P54
3 x



R1
14 x



R15
8 x

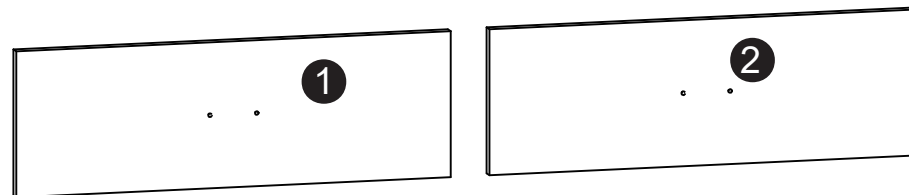
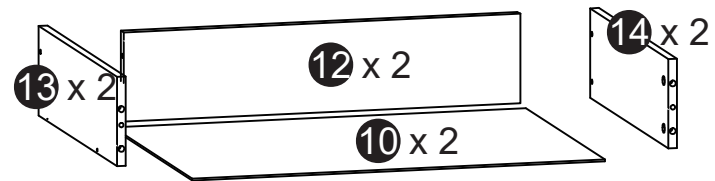
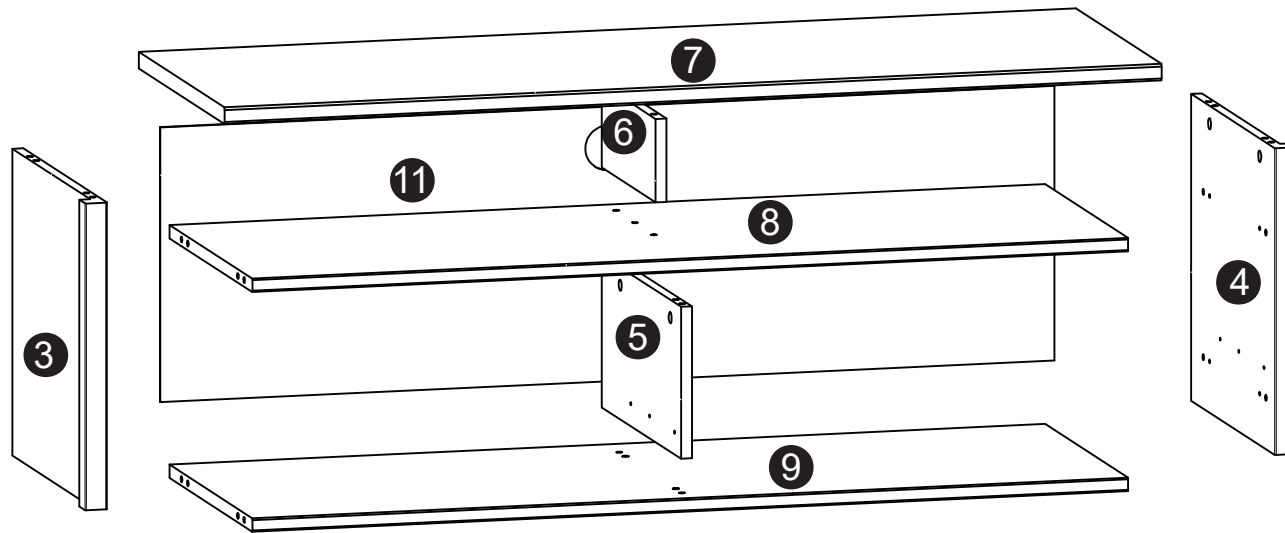


K1
4 X



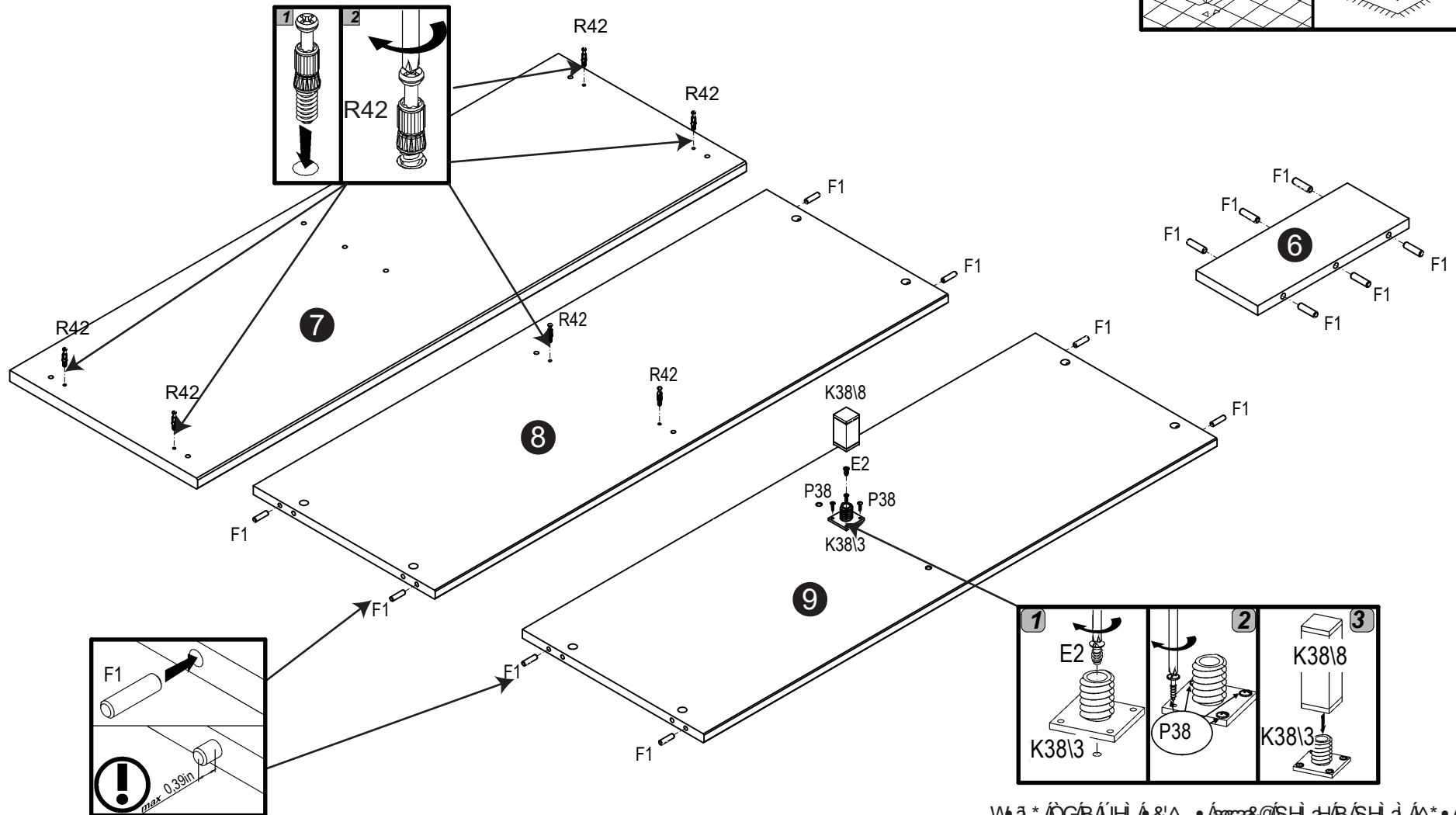
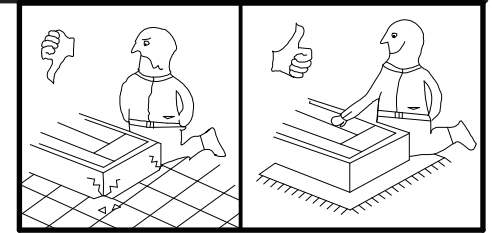
S68
5 x

Step 1 :



Step 2 :

Install the R42 eccentric connector bolts in elements 7 & 8

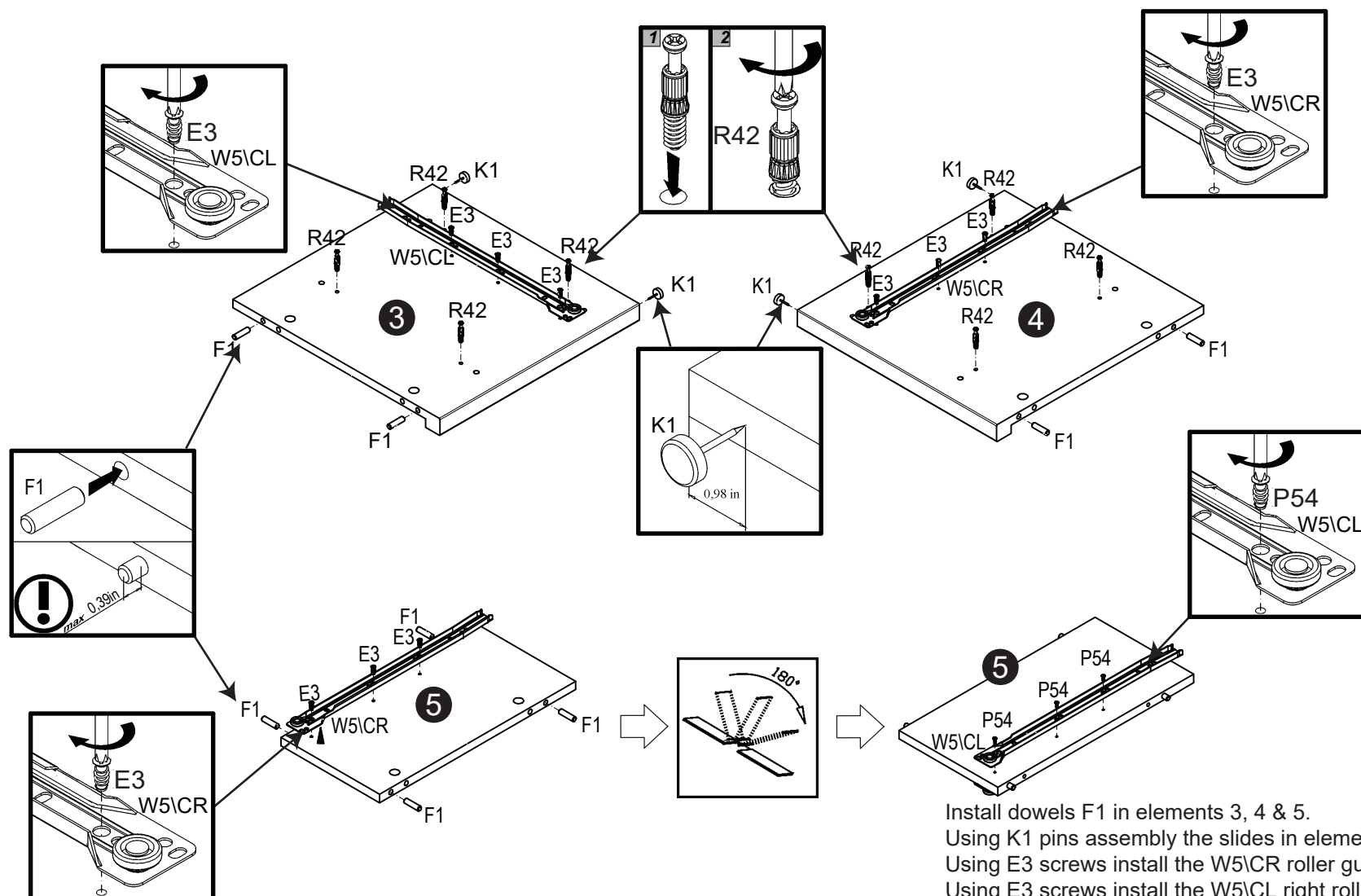


Q • ca / 10 F A [, ^ | Á q • Á Á \ { ^ } • Á É Ú Á Â

W a * Á G B Á H Á & ^ , Á a a & Q S H Á B S H à Á * Á Á
^ \ { ^ } Á É

Step 3 :

Install the R42 eccentric connector bolts in elements 3 & 4

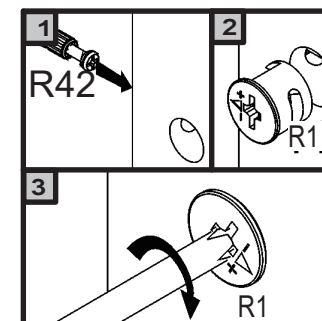
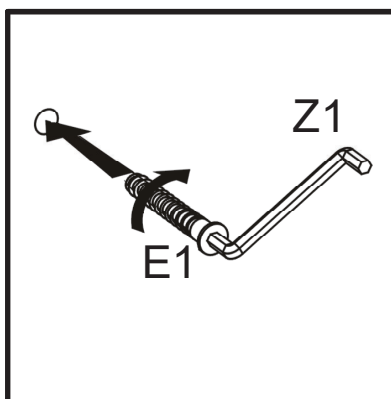
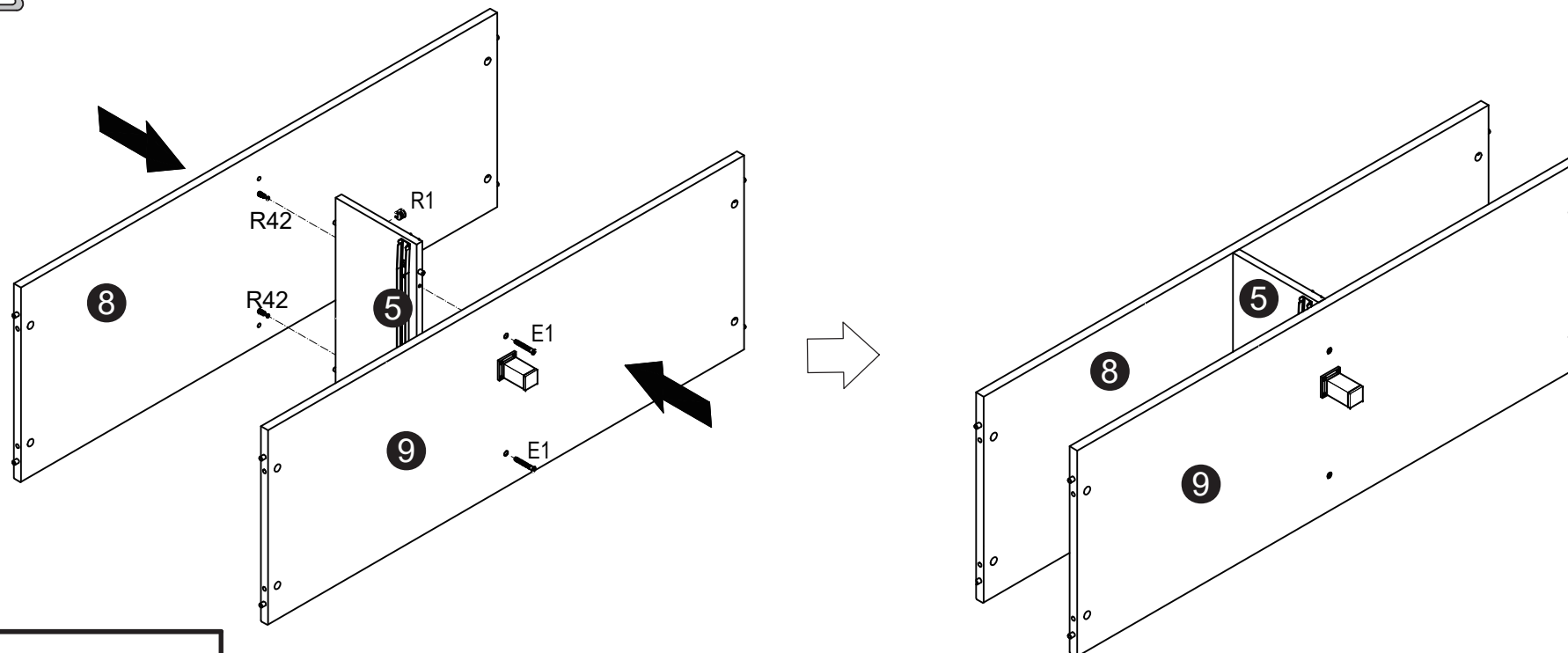


Install dowels F1 in elements 3, 4 & 5.
 Using K1 pins assembly the slides in elements 3 & 4
 Using E3 screws install the W5\CR roller guides in elements 4 & 5
 Using E3 screws install the W5\CL right roller guide in element 4
 and using the E3 screws in element no. 5.

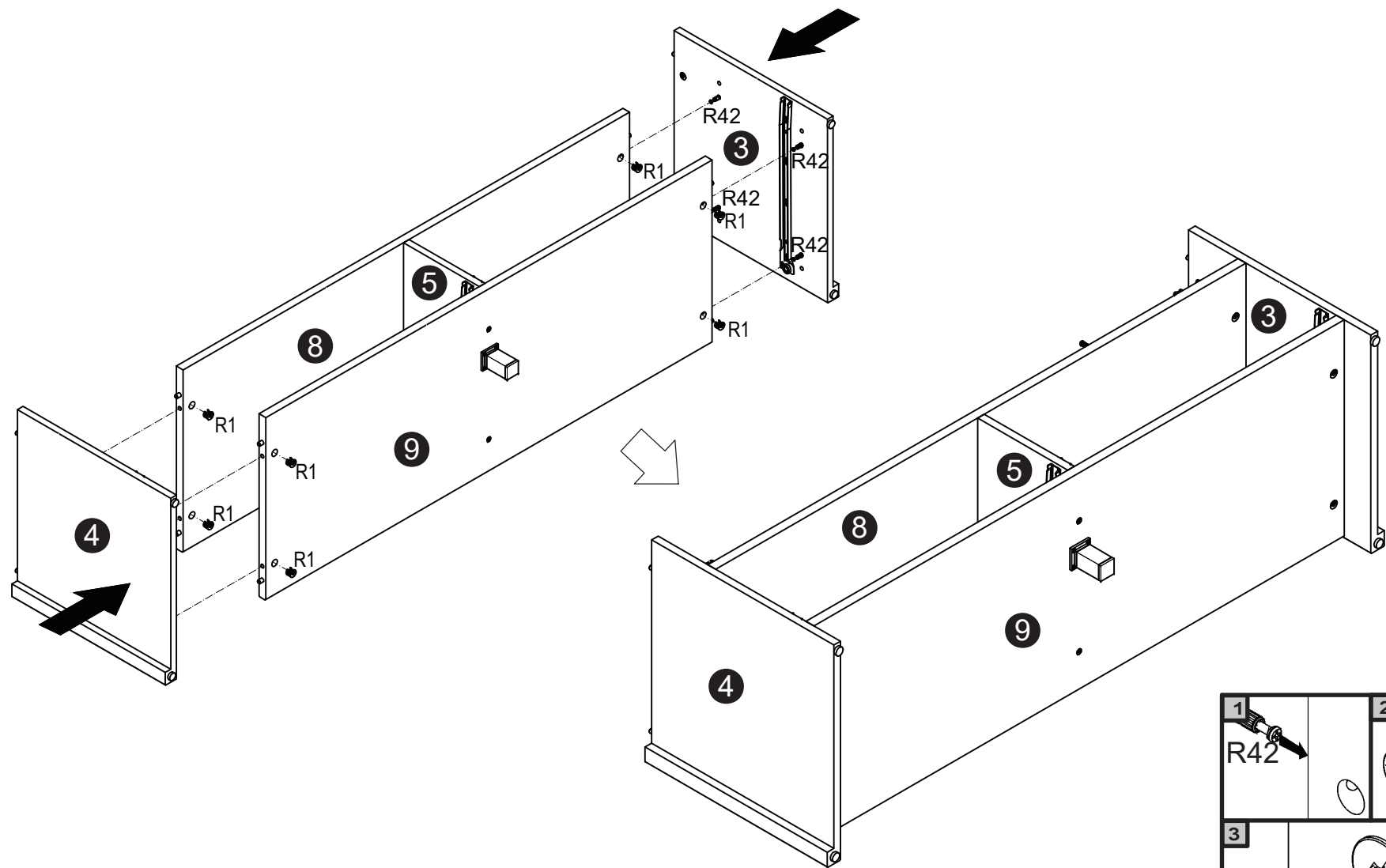
Step 4 :



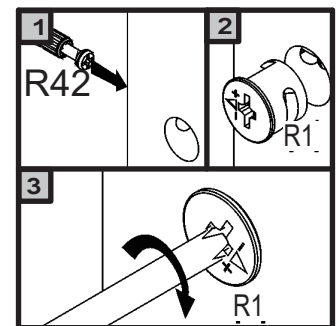
Place elements 8, 5 and 9 relative to each other as shown in the picture.
Connect elements 9 and 5 using confirmat screws e1 and key z1,
attach shelf 8 to element 5 using eccentric connector r1 and r42.



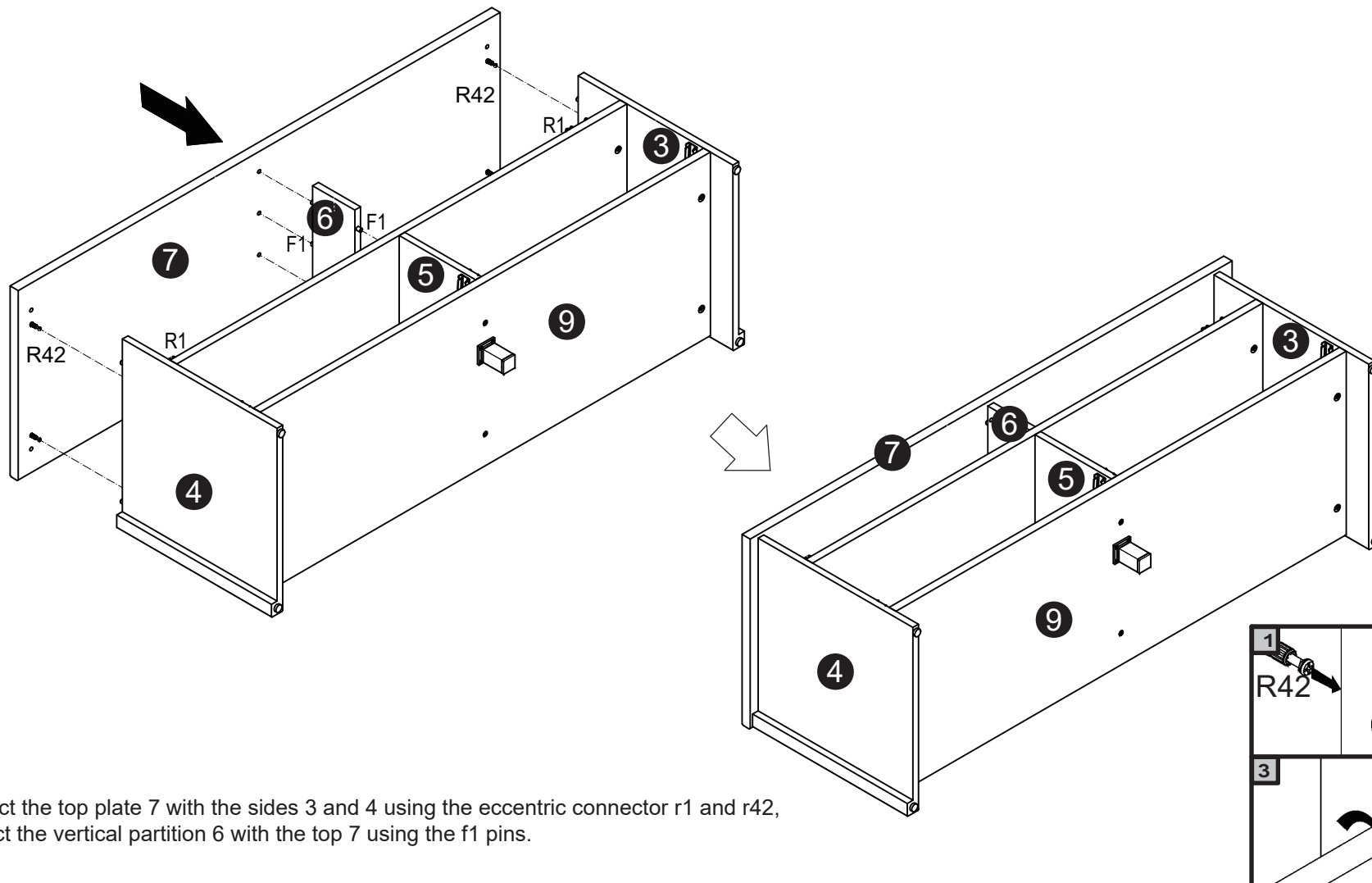
Step 5 :



Attach sides 3&4 to elements 8&9 placing them as depicted above.
Join the elements using the R42 & R1 eccentric connectors.



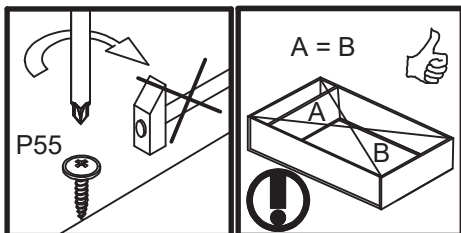
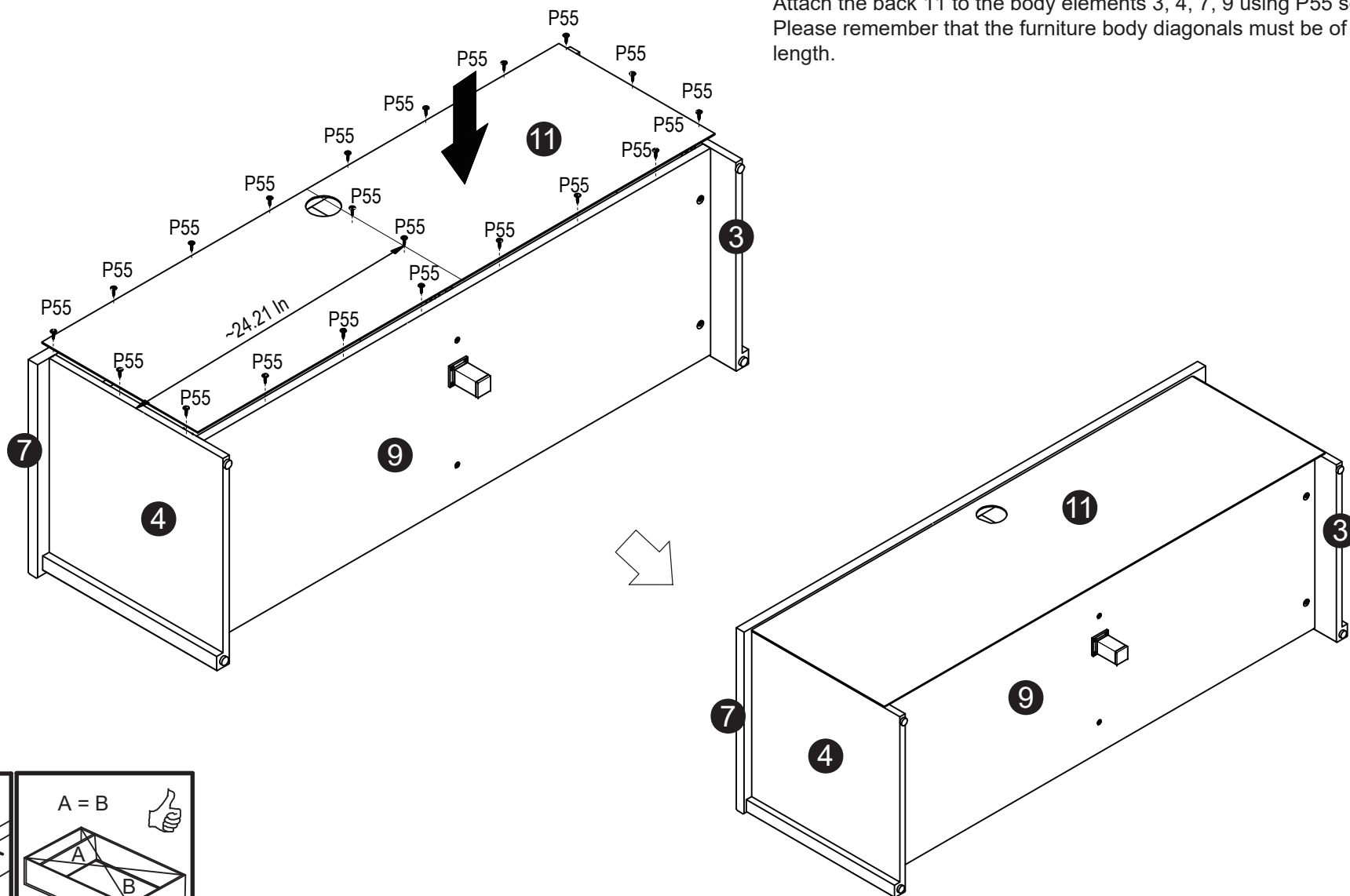
Step 6 :



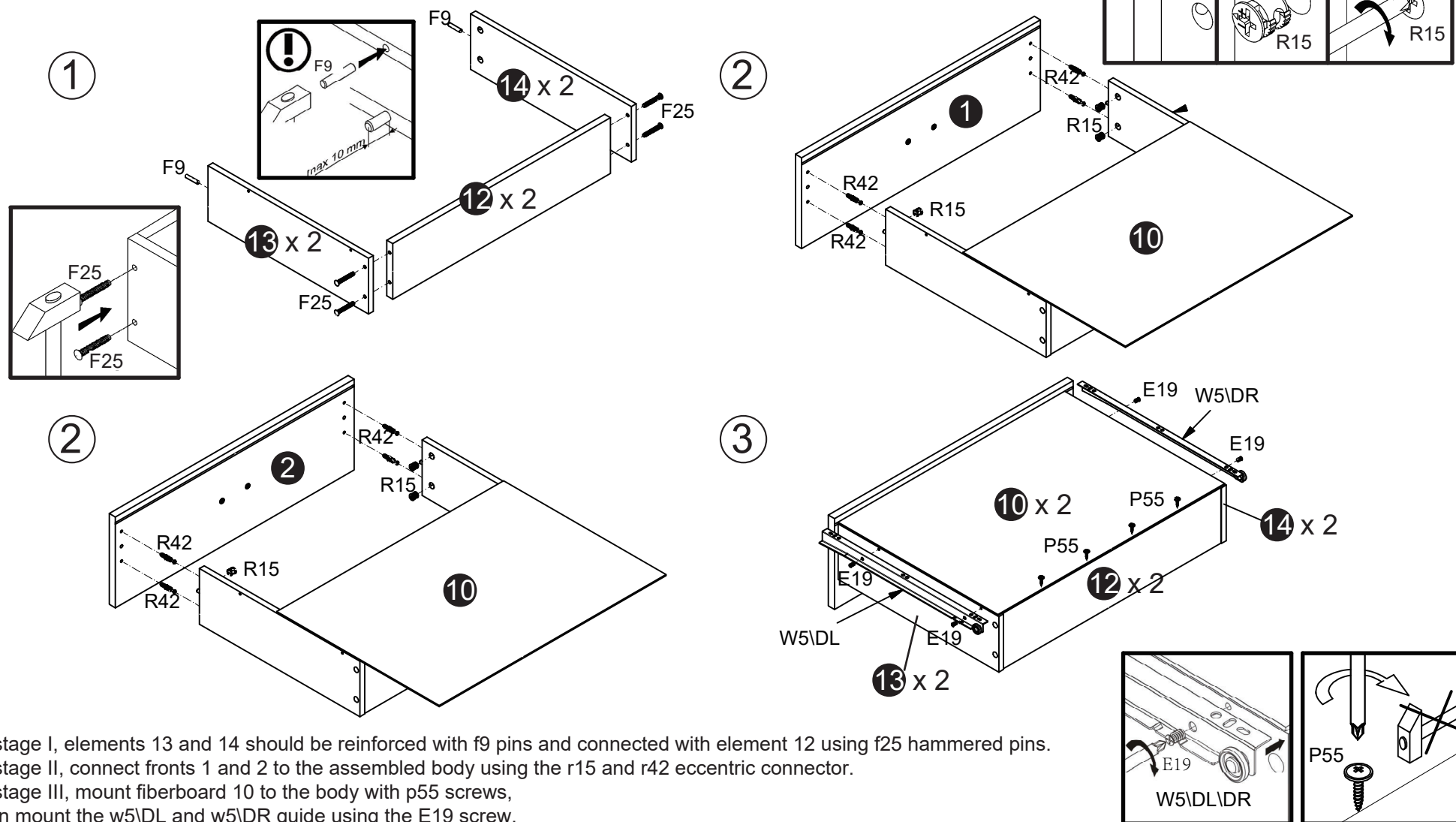
Connect the top plate 7 with the sides 3 and 4 using the eccentric connector r1 and r42, connect the vertical partition 6 with the top 7 using the f1 pins.

Step 7 :

Attach the back 11 to the body elements 3, 4, 7, 9 using P55 screws. Please remember that the furniture body diagonals must be of equal length.

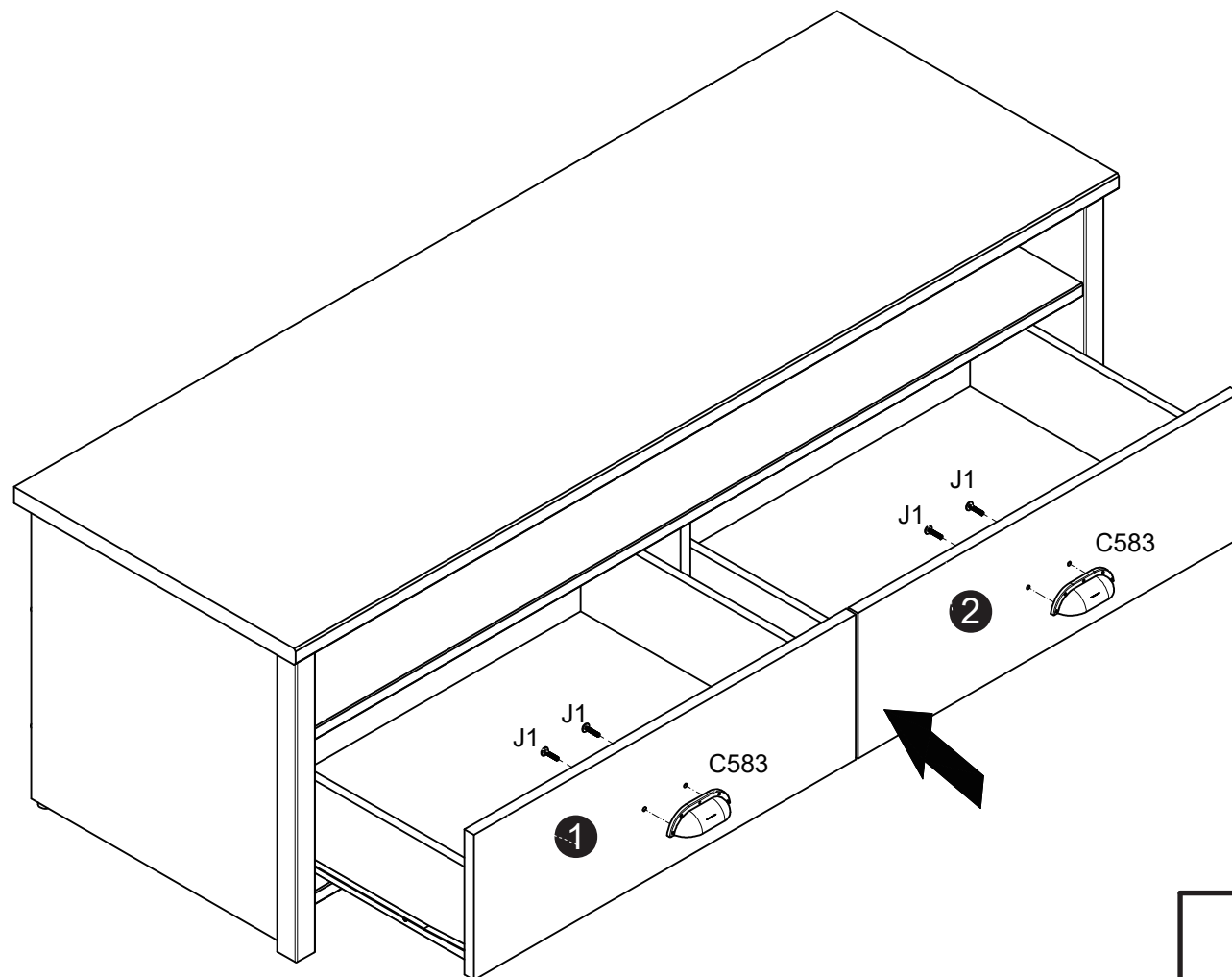


Step 8 :

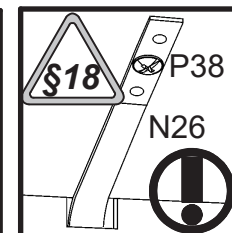
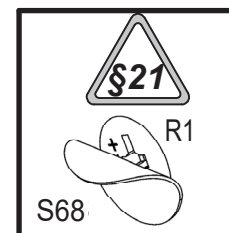


In stage I, elements 13 and 14 should be reinforced with f9 pins and connected with element 12 using f25 hammered pins.
 In stage II, connect fronts 1 and 2 to the assembled body using the r15 and r42 eccentric connector.
 In stage III, mount fiberboard 10 to the body with p55 screws,
 then mount the w5\DL and w5\DR guide using the E19 screw.

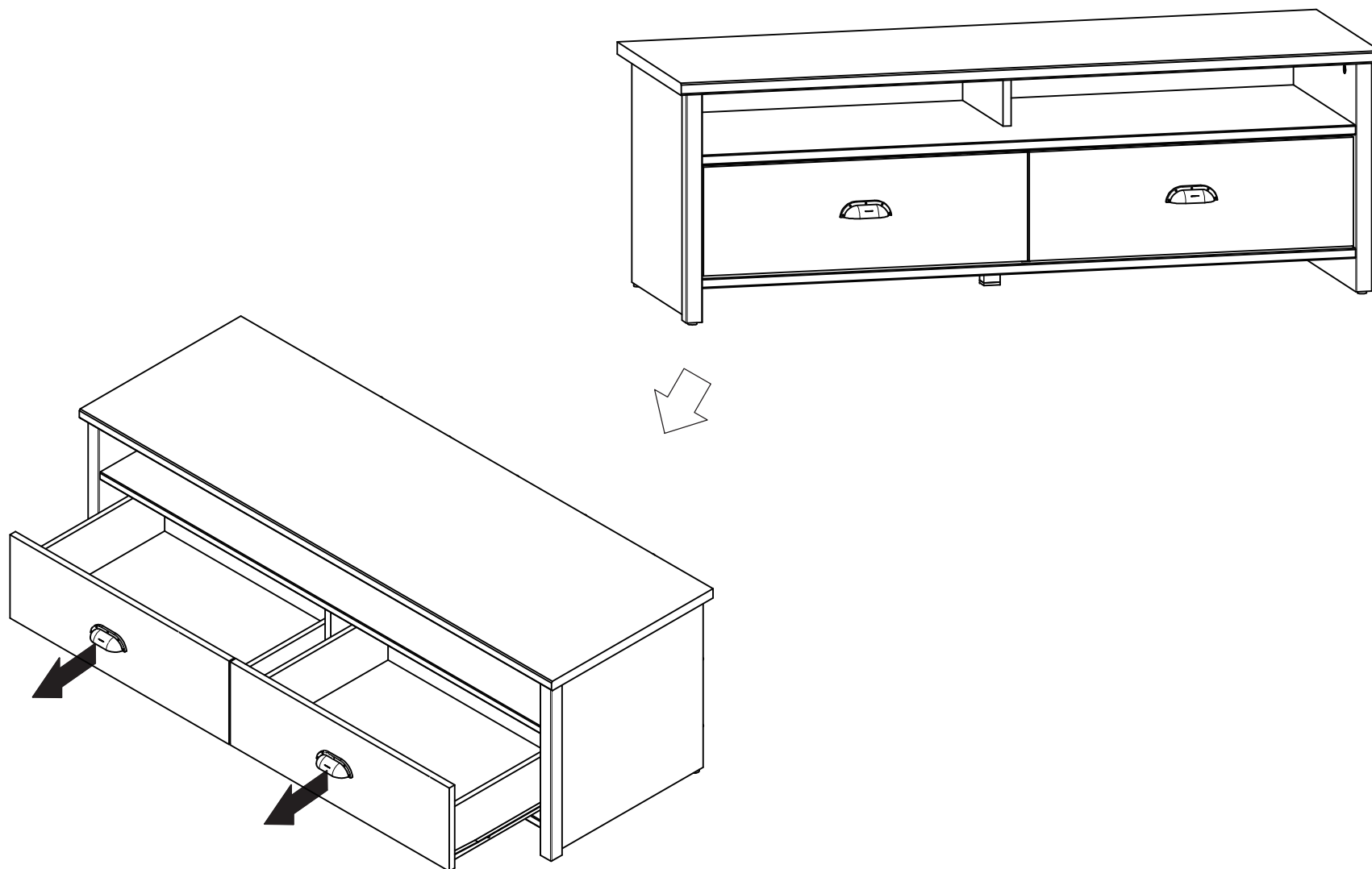
Step 9 :



Mount the c583 handles on the fronts 1 and 2 using the screws j1.



FUNCTIONS :



Warranty

Our products carry a one year limited warranty pursuant to the terms set forth herein. This warranty is valid only to the original purchaser with proof of purchase, and constitutes the original purchaser's sole and exclusive remedy. Pursuant to this warranty. We warrants that all products sold pursuant to this agreement shall be free of any defects in parts and workmanship if used under normal operating conditions.

IT IS MADE EXPRESSLY IN LIEU OF ALL IMPLIED WARRANTIES OF MERCHANTABILITY OR FITNESS FOR ANY PARTICULAR PURPOSE.

Should any parts or workmanship prove defective, we will, at discretion, either repair or replace the product at no charge (parts only) to the original purchaser for the duration of the product's full warranty. Our products are under limited warranty for 1 year from original date of purchase.

At all times, we reserves the right to substitute materials with that of a similar quality if the original material is not available. We will not be responsible for any freight charges incurred in repairing or replacing products.

DOES NOT WARRANT DAMAGE DUE TO MISUSE OR NEGLIGENCE. This remedy is the original purchaser's SOLE AND EXCLUSIVE REMEDY under the Contract of Sale, and in no event shall consequential damages be recovered by the original purchaser. This warranty gives you specific legal rights, and you may also have rights which vary from state to state.