

# Bin Store: Instructions for Assembly

1. Ensure that all component parts are available for you to complete the assembly of your bin store.

2. It is imperative that the bin store be laid on a firm and level base. Check this is so by using a spirit level before proceeding.

3. Offer one of the side walls of the bin store to the back and attach securely using the coach screws provided which fit through the pre drilled holes in the back framing (See image 1).

4. Nail the framing into place using the 65mm nails provided (See image 2) and repeat stage three and four with the other side. (For double and triple bin stores attach the side walls together from the inside of the framing with the coach bolts provided. See image 3.)

5. Attach the corner strips to the high side of the bin store using the 40mm nails provided (See image 6).

6. Attach the door spacer bracket to the front of the gables by sliding it into place and screwing it in using the 40mm screws provided (See image 4). Ensure that the spacer is held tight against the side panels whilst being screwed into place. The distance between the gables should measure 660mm.

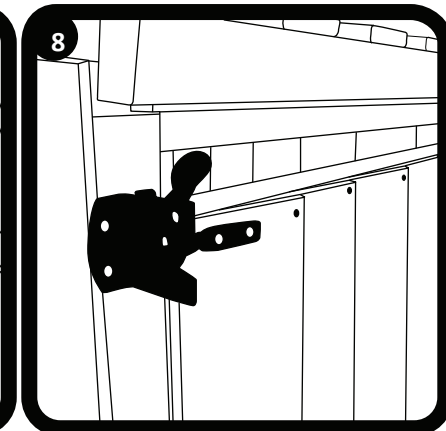
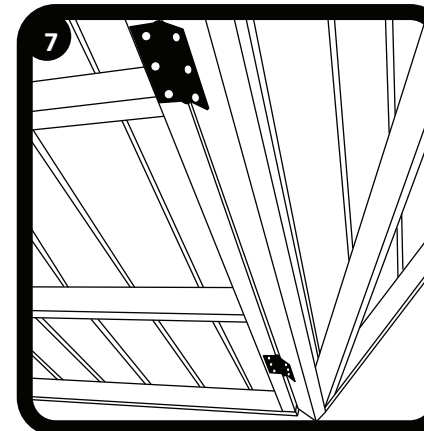
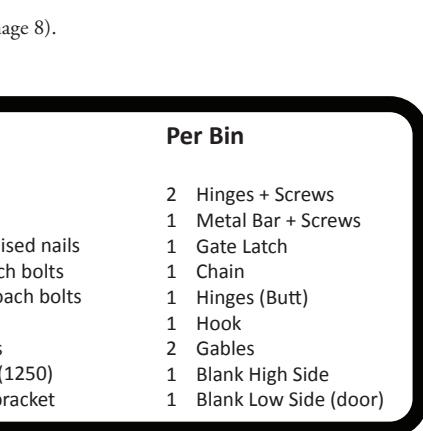
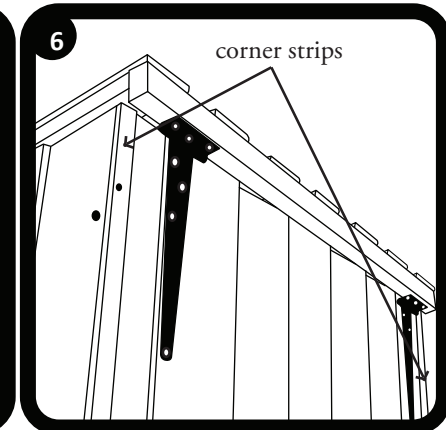
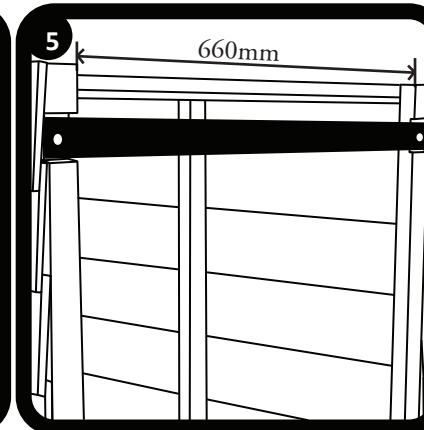
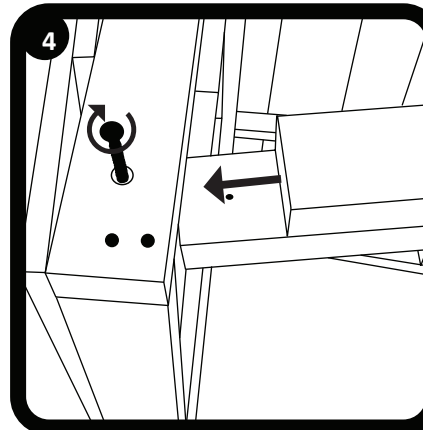
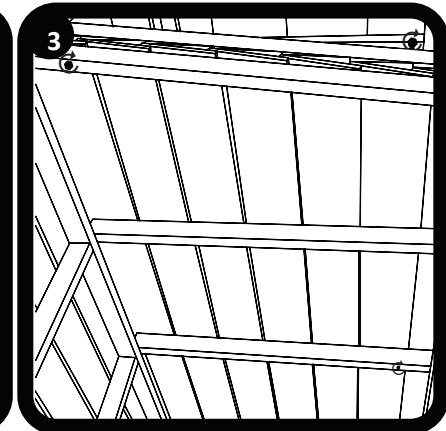
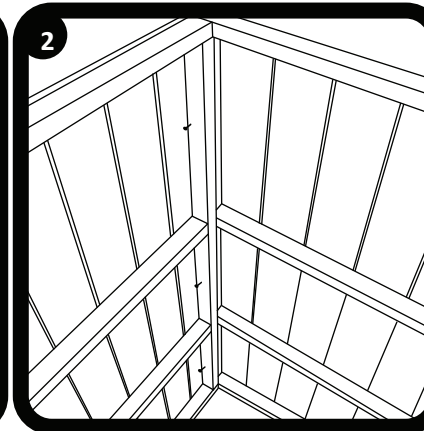
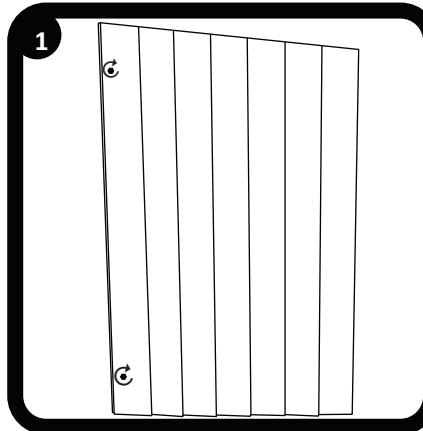
7. Attach the metal base plate to the base of the gables towards the front end of the bin store. (See image 5) Ensure that the gap in between the gables measures 660mm and fix into place using the 40mm screws provided. For double and triple bin stores ensure that the gap between the units is 660mm before fixing into place through the pre-drilled holes in the base plate(s).

8. Fix the hook to the centre of the bin store lid and line the lid up with the sides of the gables before attaching the hinges. Ensure that the lid is level and offer the hinges up to the lid. It is important to make sure the hinges are level with the back of the bin store and are opposing the inner framing of the back panel (See image 6). Attach to the lid and back using the 28mm screws provided.

9. Attach the bin store door to the gable of your preference using the butt hinges and screws provided (See image 7).

10. Line up the gate latch with the door and frame and attach using the fixings provided. (See image 8).

11. Once assembled affix the chain to your bin and attach it to the hook on the lid.



## Components

### Single

- 8 40mm galvanised nails
- 4 standard coach bolts
- 6 65mm nails
- 2 40mm screws
- 2 corner fillets (1250)
- 1 door spacer bracket

### Double

- 16 40mm galvanised nails
- 8 standard coach bolts
- 4 heavy duty coach bolts
- 12 65mm nails
- 4 40mm screws
- 4 corner fillets (1250)
- 2 door spacer bracket

### Triple

- 24 40mm galvanised nails
- 12 standard coach bolts
- 8 heavy duty coach bolts
- 18 65mm nails
- 6 40mm screws
- 6 corner fillets (1250)
- 3 door spacer bracket

### Per Bin

- 2 Hinges + Screws
- 1 Metal Bar + Screws
- 1 Gate Latch
- 1 Chain
- 1 Hinges (Butt)
- 1 Hook
- 2 Gables
- 1 Blank High Side
- 1 Blank Low Side (door)