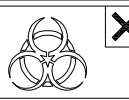
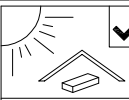




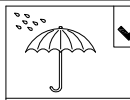
SOFT, DRY CLOTH



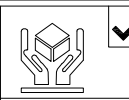
CHEMICAL



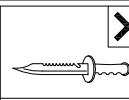
HEAT



KEEP DRY



HANDLE WITH CARE



DO NOT USE KNIFE

ASSEMBLY INSTRUCTION

DESCRIPTION : 4 DOORS SHOE CABINET

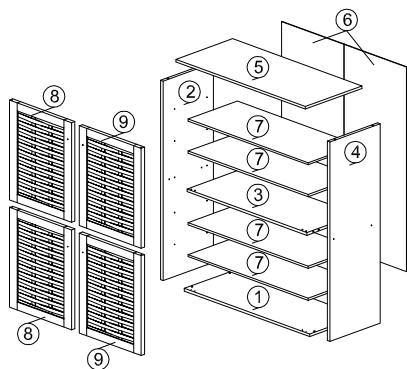
HARDWARE

AWOOD DOWEL
8 X 25
1X4**B**CB SCREW
M3.5X16MM
1X24**C**CB SCREW
M4X38MM
1X8**D**NAIL 6/8
1X25**E**PVC SHELF
SUPPORT
1X16**F**DOOR
SUPPORT
SPRING
1X2**G**3.5KG MAGNET
(1 HOLE)**G1**3.5KG MAGNET
(1 HOLE)**G2**3.5KG MAGNET
(1 HOLE)**G3**3.5KG MAGNET
(1 HOLE)

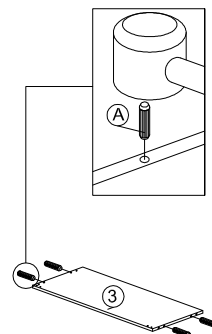
4 SETS

HMAS L4
1X1**H2**MAS R4
1X1**I**MAS L2
1X1**I2**MAS R2
1X1**J**ROUND PLASTIC
LEG (PVC)
1X4**K**MINIFIX 5654+5546
4 SETS**K1**MINIFIX 5654+5546
4 SETS**L**L-KEY
1X1**M**QUICKFIT
CAP
1X4**N**HANDLE
5022
(METAL)
1X4**O**HANDLE
SCREW
M4X22MM
1X4

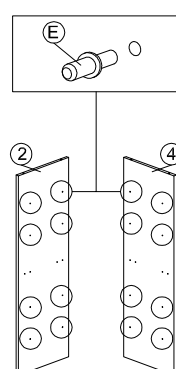
PART LIST



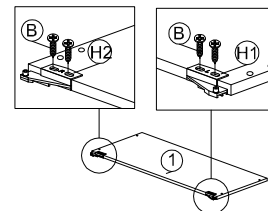
STEP 1



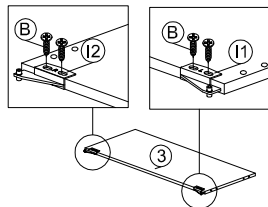
STEP 2



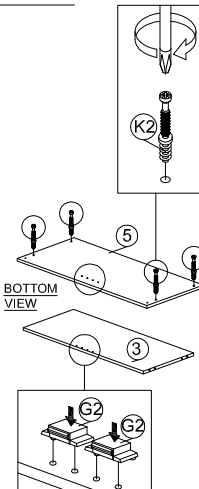
STEP 3



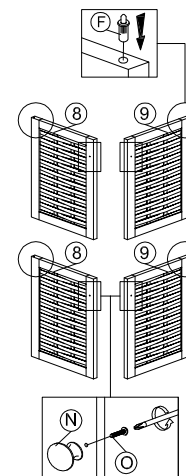
STEP 4



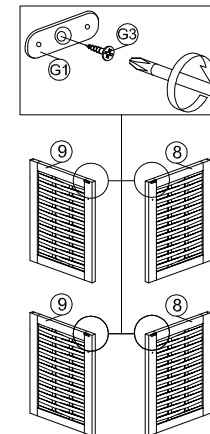
STEP 5



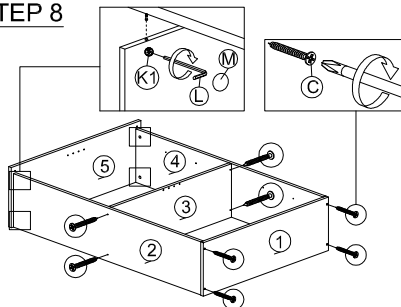
STEP 6



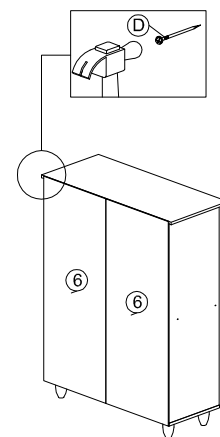
STEP 7



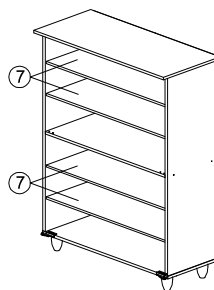
STEP 8



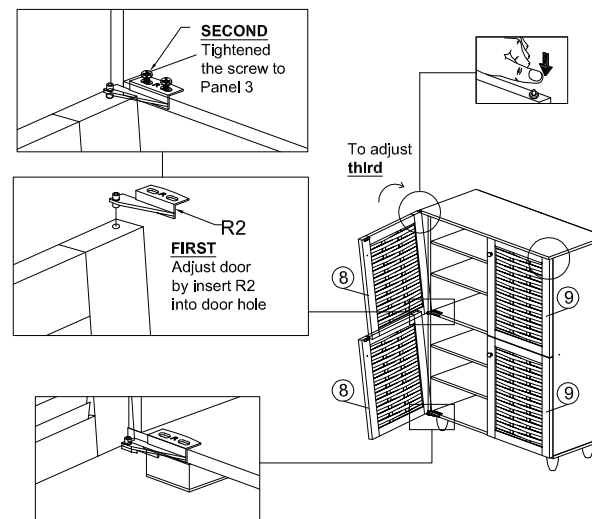
STEP 10



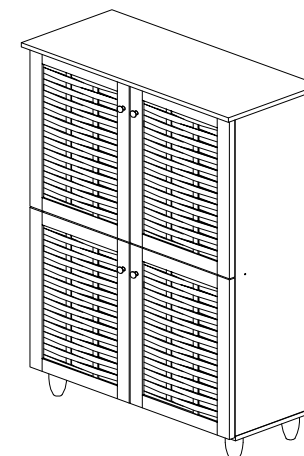
STEP 11



STEP 12



COMPLETED



STEP 9

