



VESTIL MANUFACTURING CORP.

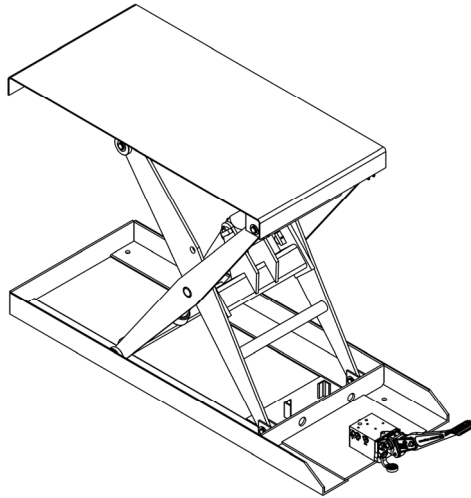
2999 North Wayne Street, P.O. Box 507, Angola, IN 46703

Telephone: (260) 665-7586 -or- Toll Free (800) 348-0868

Fax: (260) 665-1339

www.vestilmfg.com e-mail: sales@vestil.com

SCTAB-500, SCTAB-750D, SCTAB-1000 & SCTAB-2000 SCISSOR LIFT TABLES USE AND MAINTENANCE MANUAL



Receiving instructions:

After delivery, IMMEDIATELY remove the packaging from the product in a manner that preserves the packaging and maintains the orientation of the product in the packaging; then inspect the product closely to determine whether it sustained damage during transport. **If damage is discovered during the inspection, immediately record a complete description of the damage on the bill of lading.** If the product is undamaged, discard the packaging.

NOTES:

- 1) Compliance with laws, regulations, codes, and non-voluntary standards enforced in the location where the product is used is exclusively the responsibility of the owner/end-user
- 2) VESTIL is **not liable** for any injury or property damage that occurs as a consequence of failing to apply either:
 - a) Instructions in this manual; or b) information provided on labels affixed to the product. Neither is Vestil responsible for any consequential damages sustained as a result of failing to exercise sound judgment while assembling, installing, using or maintaining this product.

Table of Contents

Product Specifications.....	2
Hazard Identification: Explanation of Signal Words.....	2
Safety Recommendations.....	3
FIG. 1: SCTAB-500 exploded parts diagram & bill of materials.....	4
FIG. 2: SCTAB-750D exploded parts diagram & bill of materials.....	5
FIG. 3: SCTAB-1000 exploded parts diagram & bill of materials.....	6
FIG. 4: SCTAB-2000 exploded parts diagram & bill of materials.....	7
FIGS. 5A & 5B: Autoshibter exploded parts diagram & bill of materials.....	8 – 9
Operation instructions.....	10
Pump purging procedure.....	10
Cylinder purging procedure.....	10
Loading instructions.....	10
Inspections & Maintenance.....	11
Label Placement Diagram.....	12
Troubleshooting.....	13
Limited Warranty.....	14

Product specifications:

Dimensions and other product specifications appear in the following table:

Model	Maximum rated load	Hydraulic System	Tabletop dimensions	Maximum table height	Lowered table height	Net weight
SCTAB-400	400lb. 181.8kg	Manual, Auto-shifter 2-speed foot pump	17.75in. x 27.5in. 45cm x 70cm	28.5in. 72.4cm	8.25in. 21cm	95lb. 43.2kg
SCTAB-500	500lb. 227.3kg	Manual, Auto-shifter 2-speed foot pump	20in. x 33in. 51cm x 84cm	28in. 71cm	6in. 15cm	196.2lb. 89.2kg
SCTAB-750D (double scissor lift)	750lb. 340.9kg	Manual, Auto-shifter 2-speed foot pump	20in. x 40in. 51cm x 102cm	35in. 89cm	7in. 18cm	223lb. kg
SCTAB-800D (double scissor lift)	800lb. 363.6kg	Manual, Auto-shifter 2-speed foot pump	20in. x 35.5in. 51cm x 90cm	52in. 132cm	15.5in. 39.4cm	258lb. kg
SCTAB-1000	1,000lb. 454.5kg	Manual, Auto-shifter 2-speed foot pump	20in. x 40in. 51cm x 102cm	32in. 81cm	8in. 20cm	234lb. 106.4kg
SCTAB-2000	2,000lb. 909.1kg	Manual, Auto-shifter 2-speed foot pump	42in. x 42in. 107cm x 107cm	32in. 81cm	8in. 20cm	342lb. 155.5kg

Hazard Identification--Explanation of SIGNAL WORDS

This manual uses SIGNAL WORDS to indicate the likelihood of personal injuries, as well as the probable seriousness of those injuries, if the product is misused in the ways described. Other signal words call attention to uses of the product likely cause property damage. The signal words used appear below along with the meaning of each word:



Identifies a hazardous situation which, if not avoided, WILL result in DEATH or SERIOUS INJURY. Use of this signal word is limited to the most extreme situations.



Identifies a hazardous situation which, if not avoided, COULD result in DEATH or SERIOUS INJURY.



Indicates a hazardous situation which, if not avoided, COULD result in MINOR or MODERATE injury.



Identifies practices likely to result in product/property damage, such as operation that might damage the product.

Each person who assembles, installs, uses, or maintains this product should read the entire manual in advance and fully understand the directions. If after reading the manual you do not understand an instruction, ask your supervisor or employer for clarification, because failure to adhere to the directions in this manual might result in serious personal injury.

Safety Recommendations:

We strive to identify foreseeable hazards associated with the use of our products. However, material handling is inherently dangerous and no manual can address every risk. The end-user ultimately is responsible for exercising sound judgment at all times.

⚠ WARNING Material handling is dangerous. Improper or careless operation might result in serious personal injuries sustained by the operator and bystanders. Always apply material handling techniques learned during training and use the product properly:

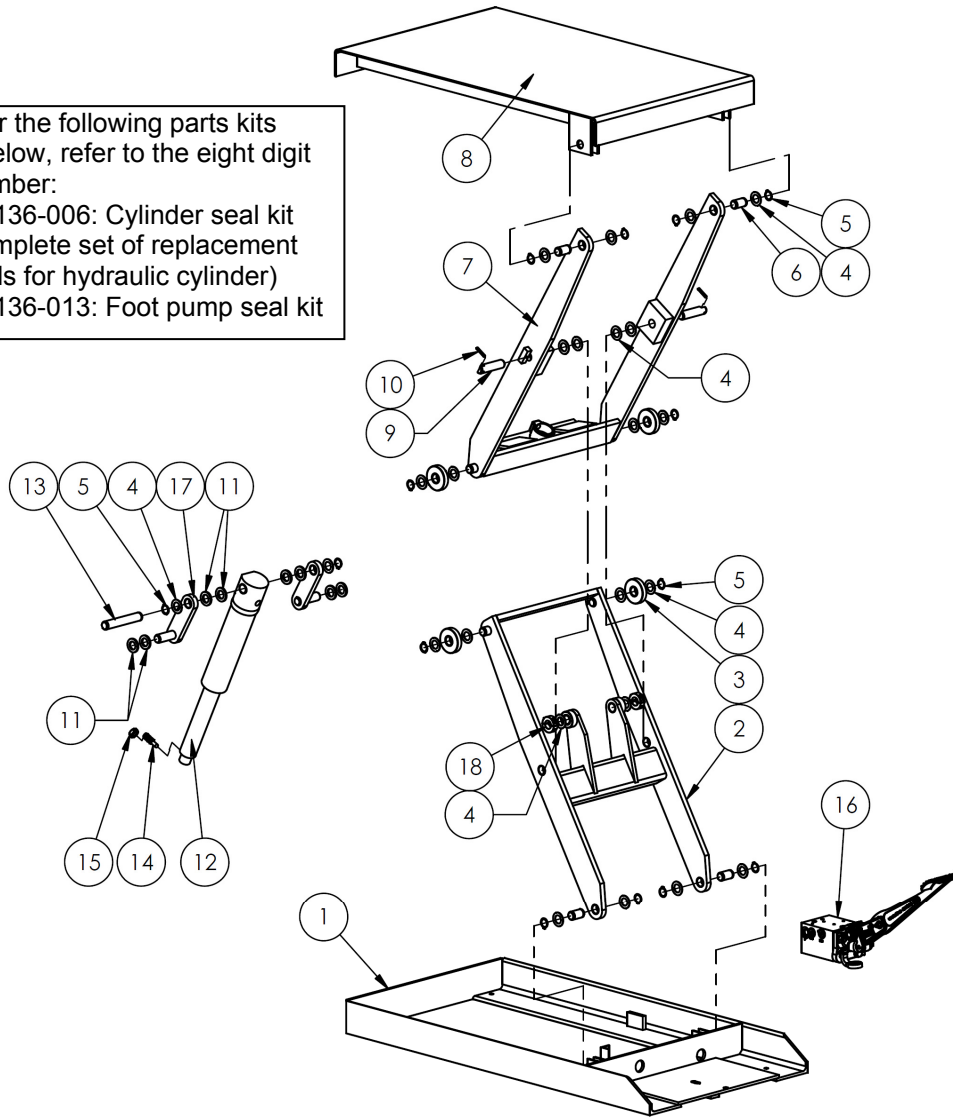
- ***Failure to read and understand the entire manual before assembling, using or servicing the product constitutes misuse.*** Read the manual to refresh your understanding of proper use and maintenance procedures as necessary.
- DO NOT attempt to lift a load that weighs more than the maximum rated load of your table. The rated load (capacity) of your pallet handler appears on label 287 as shown in “Label placement diagram” on p. 12. (Also see product specifications table on p. 2. If the maximum rated load displayed on label 287 differs from information in the table on p. 2, the number shown on the label should be deemed to be correct).
- DO NOT allow people to stand or sit on either the table or the load.
- Stand clear of the table while raising or lowering it.
- Keep clear of pinch points! As the deck rises and lowers, pinch points occur between the leg weldments. NEVER reach into or put any part of your body inside the scissors mechanism UNTIL the table is supported by maintenance stops.
- DO NOT install the table outdoors or in corrosive environments. ONLY install the table on compacted, improved surfaces capable of supporting the combined weight of the table and a full capacity load.
- DO NOT perform maintenance on this table UNLESS it is unloaded and maintenance stops are in place. If the table requires repairs, ONLY install manufacturer-approved replacement parts.
- DO NOT alter the pressure relief valve setting!
- ALWAYS center and evenly distribute loads on the table. Secure loads to the table if they are likely to roll or slide off of the table.
- ALWAYS observe the table while raising and lowering the table. The table should rise smoothly and evenly from side-to-side. Watch for binding or jerky movement and listen for unusual noises. Tag the unit "Out of order" and do not use it if you observe anything abnormal.
- DO NOT use the table unless it is in normal operating condition. Inspect the unit before each use according to the inspection instructions on p. 11 to determine whether the unit is functioning normally. DO NOT use the table unless it passes every part of the inspection or until it is restored to normal operating condition.
- Always watch the load carefully while raising and lowering the deck.
- DO NOT continue to pump the foot pedal if the table is fully elevated (does not continue to rise).
- Before leaving the table unattended, unload it and relieve hydraulic pressure by pressing the release lever and holding it until the table is fully lowered.
- DO NOT use the cart UNLESS all labels are in place and readable (see “Label placement diagram” on p. 12).
- DO NOT modify this table in any way. Modifying the table automatically voids the limited warranty and might make it unsafe to use.

NOTICE Proper use and maintenance are essential for this product to function properly.

- Always use this product in accordance with the instructions in this manual and consistent with any training relevant to machines, devices, etc. used in conjunction with this product.
- Periodically lubricate moving parts.
- Keep the product clean & dry.
- Only use approved replacement parts. To order replacement or spare parts for this equipment, contact the factory.

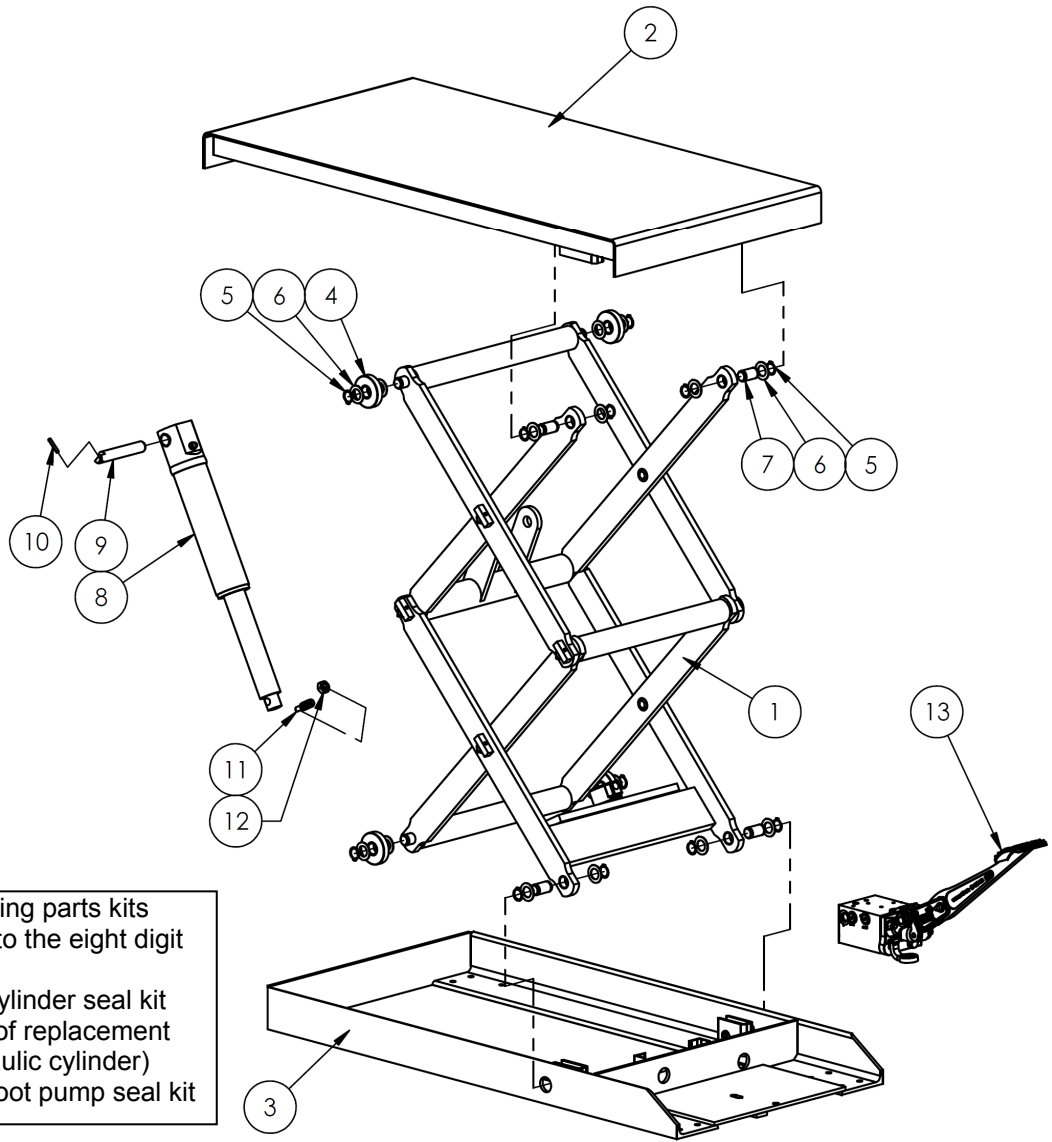
FIG. 1: SCTAB-500 Exploded Parts Diagram & Bill of Materials

To order the following parts kits listed below, refer to the eight digit part number:
 1) 99-136-006: Cylinder seal kit (complete set of replacement seals for hydraulic cylinder)
 2) 99-136-013: Foot pump seal kit



Item no.	Part no.	Description	Quantity
1	01-514-021	Frame weldment assembly	1
2	01-510-016	Leg weldment assembly, inner	1
3	01-527-002	Roller assembly, 2 ¹ / ₄ in. - ¹ / ₂ in.	4
4	01-113001	Spacer/shim (machinery bushing)	24
5	68015	³ / ₄ in. external retaining ring	14
6	01-112-009	Pin, hinge pivot	4
7	01-510-017	Leg weldment assembly, outer	1
8	01-513-007	Deck weldment assembly, 20in. x 33in.	1
9	01-112-013	Pin, axle	2
10	64134	Spring pin	2
11	33426	Machinery bushing ³ / ₄ in. x 10ga.	8
12	01-021-010	Cylinder, hydraulic displacement, 1 ¹ / ₂ in. diameter, 7in. stroke	1
13	01-112-017	Pin, hinge pivot	1
14	01-118-002	Bolt, cylinder retaining	1
15	36209	¹ / ₂ in. - 13 hex jam nut plain	1
16	99-140-001	2-speed autoshifter hydraulic foot pump	1
17	01-511-002	Weldment assembly, cylinder swivel bracket	2
18	34308	Split shaft collar	2

FIG. 2: SCTAB-750D Exploded Parts Diagram & Bill of Materials

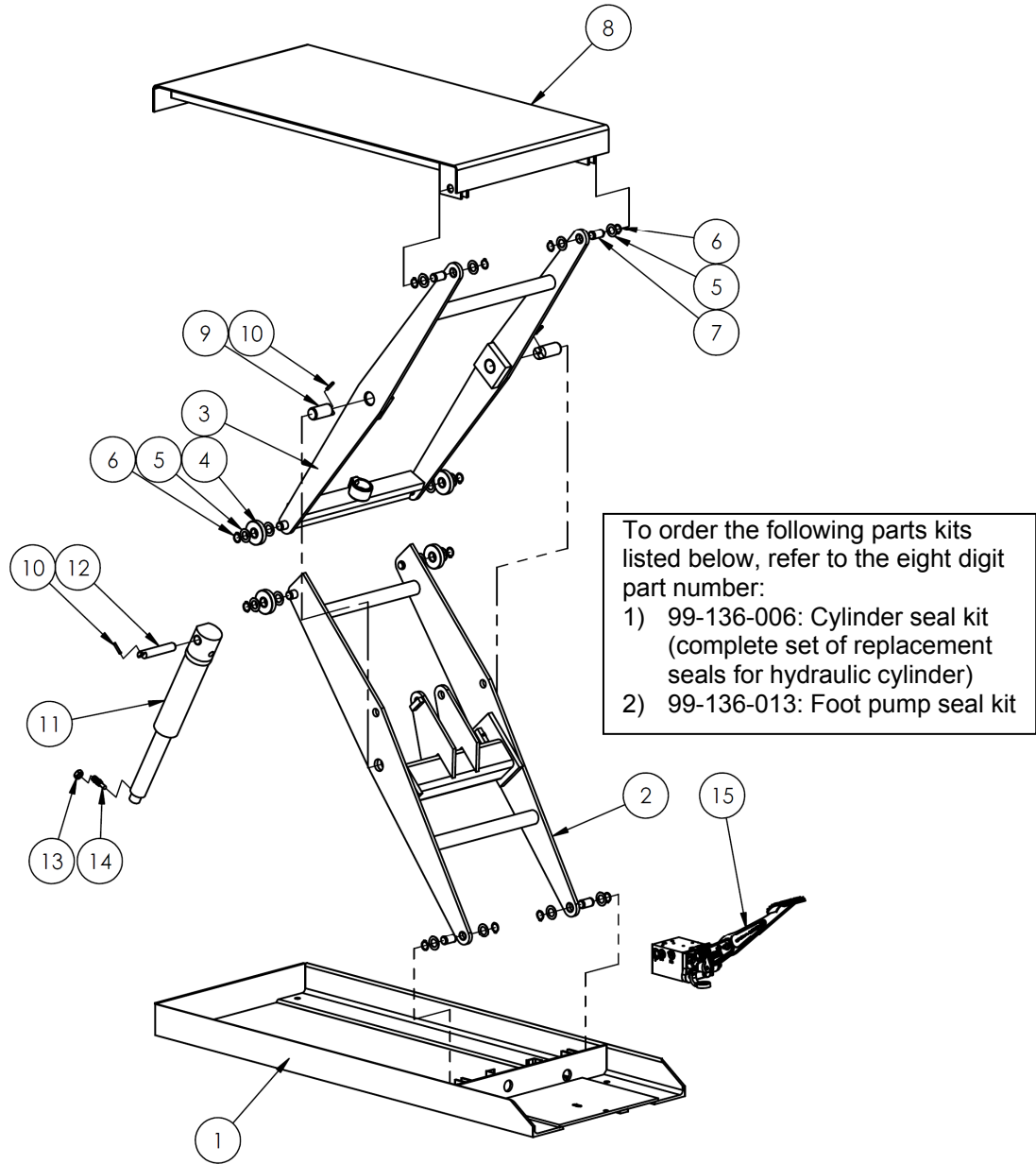


To order the following parts kits listed below, refer to the eight digit part number:

- 1) 99-136-006: Cylinder seal kit (complete set of replacement seals for hydraulic cylinder)
- 2) 99-136-013: Foot pump seal kit

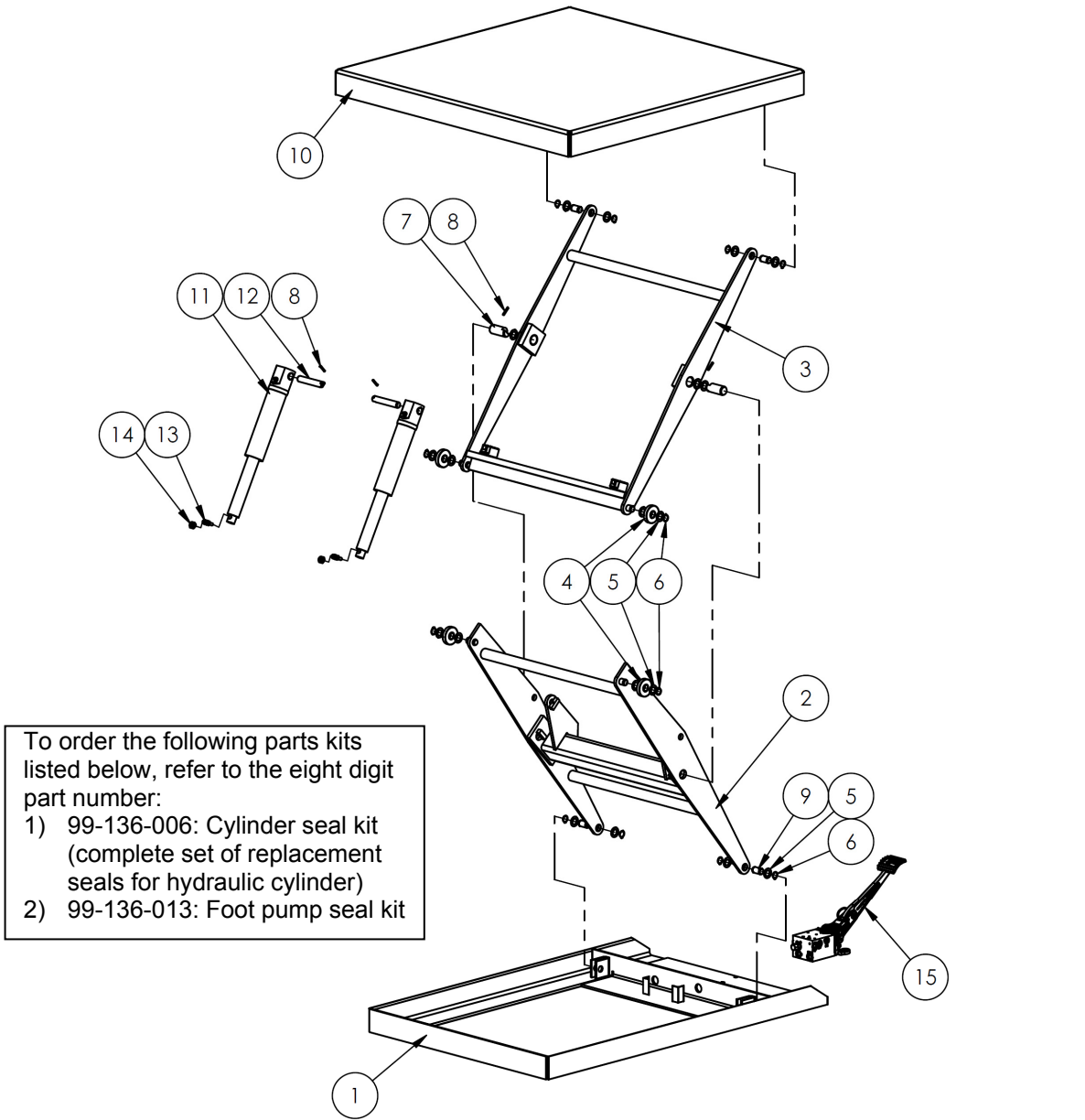
Item no.	Part no.	Description	Quantity
1	01-510-005	Leg weldment assembly	1
2	01-513-005	Deck, weldment assembly	1
3	01-514-004	Frame, weldment assembly	1
4	01-527-002	Roller, assembly 2 ¹ / ₄ in. x 1 ¹ / ₂ in.	4
5	68015	³ / ₄ in. external retaining ring	12
6	01-113-001	Spacer/shim (machinery bushing)	16
7	01-112-009	Pin, hinge pivot	4
8	99-021-915	Cylinder, hydraulic displacement, 1 ¹ / ₂ in. diameter, 7in. stroke	1
9	01-112-010	Pin, cylinder pivot	1
10	64134	Spring pin	1
11	01-118-002	Bolt, cylinder retaining	1
12	36209	1 ¹ / ₂ in. – 13 plain hex jam nut	1
13	99-140-001	2-speed autoshifter hydraulic foot pump	1

FIG. 3: SCTAB-1000 Exploded Parts Diagram & Bill of Materials



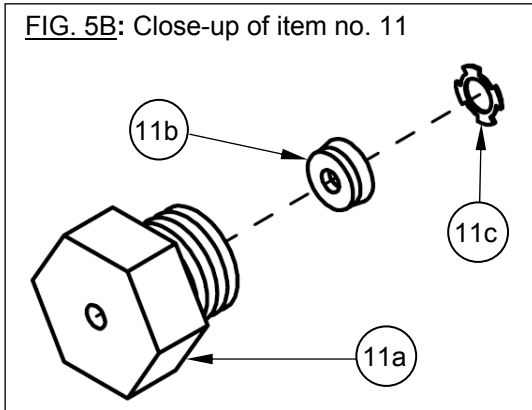
Item no.	Part no.	Description	Quantity
1	01-514-076	Frame, weldment, 20in. x 50in.	1
2	01-510-048	Leg weldment, Inner	1
3	01-510-049	Leg weldment, outer	1
4	01-527-002	2 ³ / ₄ in. x 1 ¹ / ₂ in.	4
5	01-113-001	Spacer/shim (machinery bushing)	16
6	68015	3 ³ / ₄ in. external retaining ring	12
7	01-112-009	Pin, hinge pivot	4
8	01-513-003	Weldment, deck, 20in. x 40in.	1
9	01-112-008	Pin, scissor pivot	2
10	64134	Spring pin	3
11	01-021-010	Cylinder, hydraulic displacement, 1 ¹ / ₂ in. x 7in. stroke	1
12	01-112-010	Pin, cylinder pivot	1
13	36209	1 ¹ / ₂ in. – 13 hex jam nut plain	1
14	01-118-002	Bolt, cylinder retaining	1
15	99-140-001	2-speed auto-shifter hydraulic foot pump	1

FIG. 4: SCTAB-2000 Exploded Parts Diagram & Bill of Materials

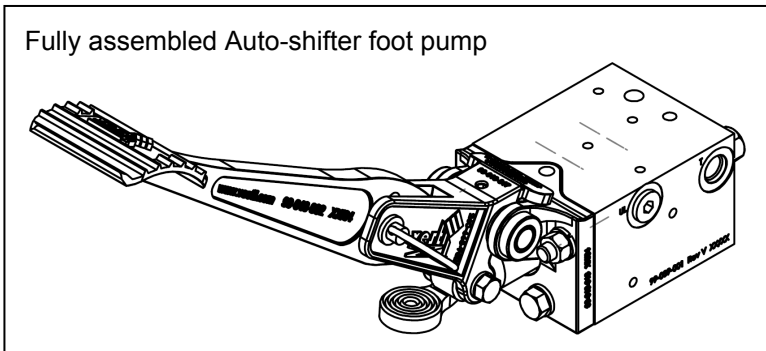
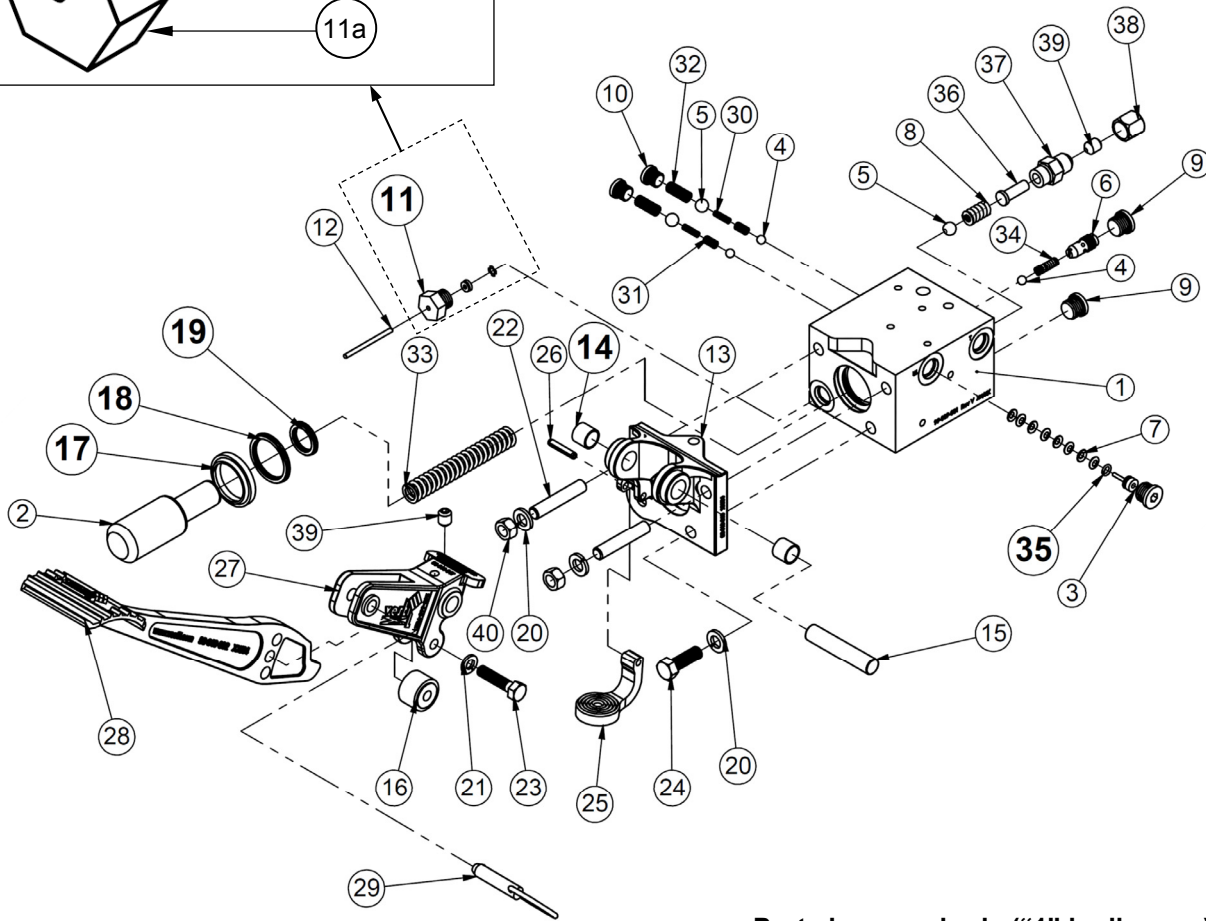


Item no.	Part no.	Description	Quantity
1	01-514-002	Frame, weldment assembly	1
2	01-510-003	Leg weldment, inner	1
3	01-510-004	Leg weldment, outer	1
4	01-527-002	2 ¹ / ₄ in. x 1 ¹ / ₂ in. roller assembly	4
5	01-113-001	Spacer/shim (machinery bushing)	20
6	68015	³ / ₄ in. external retaining ring	12
7	01-112-008	Pin, scissor pivot	2
8	64134	Spring pin	4
9	01-112-009	Pin, hinge pivot	4
10	01-513-004	Deck, weldment assembly 42in. x 42in.	1
11	01-021-010	Cylinder, hydraulic displacement, 1 ¹ / ₂ in. x 7in. stroke	2
12	01-112-010	Pin, cylinder pivot	2
13	01-118-002	Bolt, cylinder retaining	2
14	36209	1 ¹ / ₂ in. – 13 hex jam nut plain	2
15	99-140-001	2-speed auto-shifter hydraulic foot pump	1

FIG. 5A: Auto-shifter 2-Speed Foot Pump Exploded Parts Breakdown
 [NOTE: Bill of Materials on following page]



Item no.	Part no.	Description	Quantity
11a	99-031-022	Release pin packing nut	1
11b	P12500125	Release valve seal	1
11c	11484-00225	Star washer (seal retainer)	1



Ports in pump body (“1” in diagram):

The auto-shifter foot pump has four possible circuit connections.

- 2 pressure ports: marked “P” and “FC/P”;
- 2 intake/return ports: marked “T” - one is located on the rear and the other is located on the right side.

Including 2 pressure ports and 2 intake/return ports allows the circuit configuration to be adapted to varied applications. The unused pressure and intake/return ports are each plugged with an SAE #6 port plug.

Auto-Shifter Foot Pump Bill of Materials:

Item no.	Part No.	Description	Quantity
1	99-039-001	Pump body, 1.25/0.75 bore	1
2	99-041-001	Piston, 1.25 x 0.75	1
3	99-041-002	Unloader piston	1
4	0.25 ball	Chrome ball, $\frac{1}{4}$ in., hardened	3
5	0.375 ball	Chrome ball, $\frac{3}{8}$ in., hardened	3
6	99-153-038	Flow control valve, pressure compensated, 1gpm	1
7	99-114-001	Beveled spring washer	8
8	99-146-008	Spring, relief	1
9	6409-06	SAE #6 port plug	3
10	6409-04	SAE #4 port plug	2
*11	BY-082306-1	Release seal retainer assembly	1
12	99-112-009	Release pin	1
13	99-016-018	Bracket, pivot plate	1
*14	0808-MRP	$\frac{1}{2}$ in. inner diameter x $\frac{1}{2}$ in. outer diameter sleeve bearing	2
15	99-112-008	Pivot pin	1
16	CYR-1-S	Cam bearing, 1in. outer diameter x $\frac{3}{4}$ in. wide	1
*17	D-01250	Wiper, 1.25in. inner diameter x 1.5 outer diameter x 0.1875 high	1
*18	P-1250-1250	Seal 1.25 inner diameter x 0.125 cs	1
*19	RU-12500750-125	U-cup, 0.75in. inner diameter x 0.125 cs	1
20	33622	$\frac{3}{8}$ in. lock washer	3
21	33620	$\frac{5}{16}$ in. lock washer	1
22	25547	$\frac{3}{8}$ in. – 16 x 2in. socket head set screw	2
23	11057	$\frac{5}{16}$ in. x $1\frac{1}{4}$ in. hex headed bolt	1
24	11105	$\frac{3}{8}$ in. – 16 x $1\frac{1}{4}$ in.	1
25	99040-001	Release pedal/lever	1
26	64133	$\frac{3}{16}$ in. x 1in. spring pin	1
27	99-016-017	Bracket, pedal link	1
28	99-040-002	Lever, foot pedal, 2-speed auto-shifter	1
29	Pin	$\frac{3}{8}$ in. x $1\frac{1}{8}$ in. pin	1
30	99-146-004	Spring, inlet check	2
31	99-146-006	Spring, retainer, inlet check	2
32	99-146-005	Spring, outlet check	2
33	99-146-009	Spring, relief	1
34	99-146-007	Spring, release-ball	1
*35	OR-009-N70	O-ring, $\frac{1}{32}$ in. inner diameter x $1\frac{11}{32}$ in. outer diameter x $\frac{1}{16}$ in.	1
36	BY042806-1	Spring guide	1
37	BY042706-2	Relief valve body	1
38	304-C-06	Cap, #6 JIC	1
39	25537	$\frac{3}{8}$ in. – 16 set screw	2
40	36106	$\frac{3}{8}$ in. – 16 nut	2

*Foot pump seal kit 99-136-013 is comprised of Items 11, 14, 17-19, & 35

Operation Instructions:

This lift table features an auto-shifting two-speed pump, which means that pump speed is automatically selected based on the output pressure of the hydraulic system. For example, when the table is unloaded and consequently pressure in the hydraulic system is low, the pump operates in high speed mode. Each stroke of the foot pedal pumps approximately 1.2 cubic inches of oil. When weight is applied to the table, system pressure increases. At pressures in the range of 800-1000 psi the pump automatically shifts to low speed mode. In low speed mode, less effort is required to move the pedal because each stroke only pumps ~ 0.44 cubic inches of oil.

The platform will rise with each stroke of the foot pedal. If too much weight is applied to the table, i.e. weight exceeding the capacity, a pressure relief valve opens and allows oil to flow the hydraulic reservoir rather than to the cylinder. As a result, the table will not rise until the weight of the load is either equal to or less than the capacity of the table (1,000 pounds).

To lower the table, press the release lever (see item no. 25 on p. 5, 6). A pressure compensated flow control valve ensures that the table lowers at a controlled rate. Never increase the pressure relief setting more than necessary. Never exceed the pressure rating of the components in the hydraulic system.

Pump Purging Procedure:

Whether your pump is new or used, air is probably trapped inside the pump and must be removed. When air is present in the hydraulic system, you might notice a spongy feel to the foot pedal when pressing it. To remove air from the system:

1. Raise the table and install the maintenance prop(s); then lower the table until the tabletop is entirely supported by the maintenance prop(s);
2. Remove the fill plug from the oil reservoir.
3. Disconnect the hydraulic hose from the port on the cylinder and insert the free end of the hose into the fill port of the reservoir;
4. Pump the foot pedal several times and pay close attention to the stream of oil flowing into the reservoir. Pockets of air will escape as oil flows into the reservoir.
5. Once air is completely removed, reconnect the pump to the cylinder by reattaching the hydraulic hose to the cylinder port.
6. Check all of the hydraulic lines for oil leaks; then return the table to service.
7. Although air has been removed from the pump, air could still be trapped in the cylinder. The next procedure explains how to remove air from the cylinder.

Cylinder purging procedure:

A bleeder screw is located at the top of the cylinder. The bleed screw includes a hose fitting to allow attachment of a small diameter hose. By attaching a hose to the screw, any oil that escapes during the bleeding process can be directed into a container for proper disposal. To bleed air from the cylinder:

1. Raise the table and install the maintenance prop(s); then lower the table until the tabletop is entirely supported by the maintenance prop(s);
2. Gently pump the foot pedal once;
3. Carefully open the bleed screw. The pressure built in the system from pumping the pedal causes air (and oil) will flow out of the bleed screw. Pressure will drop as air and oil flow from the cylinder. To repressurize the system, close the bleed screw and pump the pedal once. Open the bleed screw again to allow more trapped air to escape;
4. Repeat step 3 until air is completely removed from the cylinder (only oil flows from the bleed screw);
5. Check all of the hydraulic lines for oil leaks; then return the table to service.

Loading the Table:

The load capacity, which appears on the data label (see p. 10, label 287) of your unit, is the maximum net weight the table can support. All loads applied to the table must be centered and evenly distributed. DO NOT exceed the capacity because personal injury or permanent damage to the table might occur.

Inspections:

⚠WARNING If one or more problem is discovered during an inspection, restore the table to normal operating condition **BEFORE** using it again. DO NOT use a boom that is structurally damaged in any way. Structural damage includes, but is not limited to, cracked welds, warping or deformation of the fork pockets, support leg, frame members, boom, boom sleeve, hooks or shackles.

DO NOT inspect the unit or perform any repairs or maintenance on the table unless it is properly tagged out and the deck is immobilized:

1. Unload the table.
2. Raise the deck to its maximum height. Insert the maintenance prop between the scissor leg rollers and the end of the frame.
3. Lower the deck until the deck lowers no further and the rollers rest against the maintenance prop.

(A) Before Each Use Check For Any of the Following Conditions:

- Oil leaks
- Pinched or chafed hoses
- Deformation of legs, frame, and deck
- Unusual noise or binding

(B) Monthly Inspections:

1. Determine the oil level. Oil should be 1" to 1-1/2" below the top of the reservoir/tank with the deck fully lowered. Add oil, if necessary.
2. Check for oil leaks (see "Troubleshooting" on p. 11). Resolve the issue as described.
3. Check roller bushings, axle pins, clevises and pivot points for severe wear.
4. Check the hydraulic system for worn or damaged hoses. Replace damaged hoses as necessary.
5. Inspect each roller for looseness and severe wear. See "Troubleshooting" on p. 11.
6. Examine the retaining rings at all axles, pivot points and clevises.
7. Cycle the deck and listen for unusual noise. See "Troubleshooting" on p. 11.
8. Make sure all labels are in place and in good condition, as shown in the label placement diagram on p. 11.
9. Clean dirt and debris from all surfaces of the table.

(C) Yearly:

Change the oil at least once a year or sooner if it darkens, is gritty, or appears milky. Milky appearance indicates the presence of water. Replace the oil with AW-32 hydraulic fluid or its equivalent.

Maintenance:

The end-user should implement a maintenance program to ensure that the product functions properly. The following steps should be utilized in conjunction with inspections.

Step 1: Tag the boom, "Out of Service."

Step 2: Remove any dirt or other matter from all surfaces.

Step 3: Conduct a "Before each use" inspection. If deformity, corrosion, rusting, or excessive wear of structural members is found, DO NOT use the product.

Step 4: Perform all other necessary adjustments, replacements and/or repairs. DO NOT modify the boom.

⚠WARNING NOT use the table if adjustments and repairs are incomplete! Return it to service **ONLY** after finishing all necessary repairs and adjustments. The reader should understand the significant difference between necessary adjustments and repairs, and modifications.

An "adjustment" is a simple correction that restores the boom to normal operating condition, such as tightening loose fasteners, or removing dirt or other debris from the surface. "Repair" refers to removing worn parts and installing replacement parts.

A "modification" is a change that alters the table from normal operating condition, like bending the frame members or removing parts. **NEVER** modify this product. Modifications automatically void the limited warranty and might make the table unsafe to use.

Step 5: Make a dated record of all repairs, adjustments and/or replacements made to the table.

Label placement diagram:

The table should be labeled as shown below. Contact Vestil to order replacement labels.

Label 207: on aluminum trim when equipped with accordion skirt

⚠ WARNING DO NOT EXCEED RATED CAPACITY. DISTRIBUTE LOAD EVENLY. READ CHINESE MANUAL BEFORE OPERATING OR REPAIRING LIFT.	⚠ ADVERTENCIA NO EXCEDA LA CAPACIDAD TASADA. DISTRIBUYA LA CARGA UNIFORMEMENTE. LEA EL MANUAL DEL PROPIETARIO ANTES DE USAR O REPARAR EL ELEVADOR.	⚠ AVERTISSEMENT NE PAS DÉPASSER CHARGE NOMINALE. REPARTIR ÉGALEMENT LE CHARGEMENT. LIRE LE GUIDE D'UTILISATION AVANT D'UTILISER OU DE RÉPARER L'ÉLEVATEUR.	DO NOT PUT HANDS, FEET OR OBJECTS UNDER TOP. LOWER PLATFORM SLOWLY.	DO NOT WORK UNDER LIFT WITHOUT SAFETY BLOCK OR WHILE LOADED. KEEP CLEAR OF MOVING SCISSORS LEG MECHANISM.	DO NOT STAND, SIT OR RIDE ON LIFT.
⚠ WARNING KEEP CLEAR OF PINCH POINT	⚠ ADVERTENCIA MANTENGASE ALEJADO DEL PUNTO DE CORTE	⚠ AVERTISSEMENT SE TENIR À DISTANCE DU POINT DE PINCEMENT			



MODEL/MODELO/MODÈLE	_____	_____
STATIC CAPACITY (evenly distributed)	_____	lbs.
LA CAPACIDAD CONSTANTE (distribuida uniformemente)	_____	kgs.
CAPACITÉ STATIQUE (distribuée régulièrement)	_____	kgs.
SERIAL/SERIE/SÉRIE	_____	_____

287 REV 0812

⚠ WARNING KEEP CLEAR OF PINCH POINT	⚠ ADVERTENCIA MANTENGASE ALEJADO DEL PUNTO DE CORTE	⚠ AVERTISSEMENT SE TENIR À DISTANCE DU POINT DE PINCEMENT
---	---	---



⚠ WARNING INSTALL ALL SUPPLIED MAINTENANCE STOPS before any maintenance is preformed on unit. DO NOT perform maintenance with load on unit.	⚠ ADVERTENCIA INSTALE TODAS LAS PARADAS DE MANTENIMIENTO SUMINISTRADAS antes de hacer cualquier reparación en la unidad. NO haga ninguna reparación con la unidad cargada.
---	--

269 REV 0811

⚠ WARNING SECURE FRAME TO FLOOR	⚠ ADVERTENCIA ASEGURE EL BASTIDOR AL PISO	⚠ AVERTISSEMENT FIXER SOLIDEMENT LE CADRE AU PLANCHER
---	---	---

204 Rev 11/10

Issue	Explanation	Remedy
1. Deck does not rise despite pumping pedal	<ul style="list-style-type: none"> a. Too much weight on the table (load exceeds capacity). b. Too little oil in hydraulic system c. Pinched hydraulic hose d. Relief valve pressure setting too low 	<ul style="list-style-type: none"> a. Remove enough of load that weight of load is within capacity of table b. Add oil until level is within one inch of top of reservoir c. Correct as appropriate d. Increase pressure setting as necessary, but NEVER more than 3,000psi
2. A lot of force is required to pump the pedal and the deck does not rise or rises slowly	<ul style="list-style-type: none"> e. Debris under pressure relief valve f. Debris under inlet check valve 	<ul style="list-style-type: none"> e. Remove, disassemble, clean (with mineral spirits or kerosene), reassemble and reinstall pressure relief valve assemblies. f. Remove, disassemble, clean (with mineral spirits or kerosene), reassemble and reinstall check valve assemblies.
3. Deck rises only when unloaded or pedal pumped rapidly; I can pump the pedal but the deck does not move.	<ul style="list-style-type: none"> g. Pump is air locked h. Debris on seat of inlet check valve i. Pressure setting of relief valve needs adjustment j. Debris on seat of relief valve 	<ul style="list-style-type: none"> g. Remove air from the pump (see "Pump purging procedure," p. 8) h. Remove inlet check valve and clean debris from valve seat (the bottom of the cavity in pump body that valve fits into) i. Increase pressure setting as necessary, but NEVER more than 3,000psi. j. Remove relief valve and clean debris from valve seat in pump body.
4. Deck rises during the down stroke of the pedal, but lowers during the upstroke.	<ul style="list-style-type: none"> k. Outlet check valve stuck in open position 	<ul style="list-style-type: none"> k. Remove, disassemble, clean (with mineral spirits or kerosene), reassemble and reinstall outlet check valve assemblies.
5. Deck rises and maintains elevation, but have to pump the pedal a million times	<ul style="list-style-type: none"> l. Autoshifter valve stuck in closed/deactivated position (piston out). 	<ul style="list-style-type: none"> l. Remove port plug from port marked "UL" (on pump body); then remove piston. Inspect piston and springs
6. Deck rises very slowly	<ul style="list-style-type: none"> m. Autoshifter valve stuck in open/activated position (piston in) 	<ul style="list-style-type: none"> m. Remove port plug from port marked "UL" (on pump body); then remove piston. Inspect piston and springs
7. Pump pedal feels spongy or deck rises in jerks	<ul style="list-style-type: none"> n. Debris interfering with leg rollers o. Oil level is low p. Air present in pump and/or cylinders 	<ul style="list-style-type: none"> n. Clean the inside of the frame and underside of deck as necessary o. Add oil until level is within 1in. of top of reservoir. p. Purge air by following "Pump purging procedure" and "Cylinder purging procedure" on p. 8.
8. Deck lowers very slowly	<ul style="list-style-type: none"> q. Flow control valve obstructed 	<ul style="list-style-type: none"> q. Remove valve and inspect for debris or non-operating spool
9. Deck lowers too rapidly	<ul style="list-style-type: none"> r. Flow control valve obstructed or not moving freely 	<ul style="list-style-type: none"> r. Remove valve and inspect for debris or non-operating spool
10. Deck rises part way and then quits	<ul style="list-style-type: none"> s. Air trapped in small pump chamber 	<ul style="list-style-type: none"> s. Perform "Pump purging procedure" on p. 8.

LIMITED WARRANTY

Vestil Manufacturing Corporation (“Vestil”) warrants this product to be free of defects in material and workmanship during the warranty period. *Our warranty obligation is to provide a replacement for a defective original part if the part is covered by the warranty, after we receive a proper request from the warrantee (you) for warranty service.*

Who may request service?

Only a warrantee may request service. *You are a warrantee if* you purchased the product from Vestil or from an authorized distributor AND Vestil has been fully paid.

What is an “original part”?

An original part is a part used to make the product as shipped to the warrantee.

What is a “proper request”?

A request for warranty service is proper if Vestil receives: 1) a photocopy of the Customer Invoice that displays the shipping date; AND 2) a written request for warranty service including your name and phone number. Send requests by any of the following methods:

<u>Mail</u>	<u>Fax</u>	<u>Email</u>
Vestil Manufacturing Corporation 2999 North Wayne Street, PO Box 507 Angola, IN 46703	(260) 665-1339 <u>Phone</u> (260) 665-7586	sales@vestil.com

In the written request, list the parts believed to be defective and include the address where replacements should be delivered.

What is covered under the warranty?

After Vestil receives your request for warranty service, an authorized representative will contact you to determine whether your claim is covered by the warranty. Before providing warranty service, Vestil may require you to send the entire product, or just the defective part or parts, to its facility in Angola, IN. The warranty covers defects in the following *original* dynamic components: motors, hydraulic pumps, electronic controllers, switches and cylinders. It also covers defects in *original* parts that wear under normal usage conditions (“wearing parts”), such as bearings, hoses, wheels, seals, brushes, and batteries.

How long is the warranty period?

The warranty period for original components is 90 days. The warranty period begins on the date when Vestil ships the product to the warrantee. If the product was purchased from an authorized distributor, the period begins when the distributor ships the product. Vestil may extend the warranty period for products shipped from authorized distributors by *up to* 30 days to account for shipping time.

If a defective part is covered by the warranty, what will Vestil do to correct the problem?

Vestil will provide an appropriate replacement for any *covered* part. An authorized representative of Vestil will contact you to discuss your claim.

What is not covered by the warranty?

1. Labor;
2. Freight;
3. Occurrence of any of the following, which automatically voids the warranty:
 - Product misuse;
 - Negligent operation or repair;
 - Corrosion or use in corrosive environments;
 - Inadequate or improper maintenance;
 - Damage sustained during shipping;
 - Collisions or other incidental contacts causing damage to the product;
 - Unauthorized modifications: DO NOT modify the product IN ANY WAY without first receiving written authorization from Vestil. Modification(s) might make the product unsafe to use or might cause excessive and/or abnormal wear.

Do any other warranties apply to the product?

Vestil Manufacturing Corp. makes no other express warranties. All implied warranties are disclaimed to the extent allowed by law. Any implied warranty not disclaimed is limited in scope to the terms of this Limited Warranty.

