

USE AND MAINTENANCE

Use on level surfaces only

Because this product needs assembly, it is prone to working itself loose from time to time depending on the use. Please take the time to check that all connections are still tight and working properly

Only clean using a damp cloth and mild detergent, do not use bleach or abrasive cleaners.

Swivel Mesh Office Chair

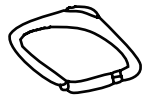
PART LIST



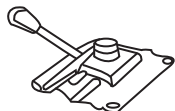
1 - Chair Back x1



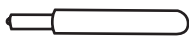
2 - Chair Cushion x1



3 - Chair Armrest x 2



4 - Chair Lever x 1



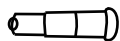
5 - Chair Height Adjustment x1



6 - Chair Wheel x1



7 - Chair Caster x 5



8 - Chair Support x 1

HARDWARE



A - M6 x 20 Screw x 4



B - M6 x 25 Screw x 4



C - M6 x 30 Screw x 4

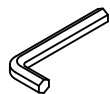


D - Spacer x 4

HARDWARE



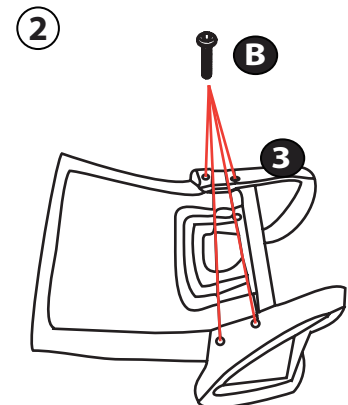
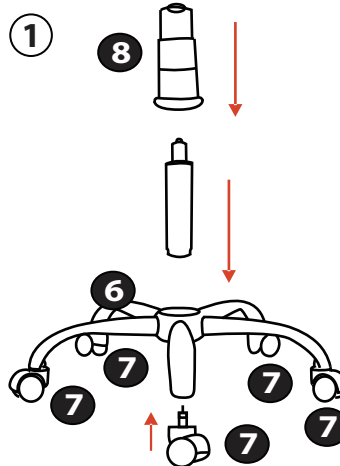
E - x 4



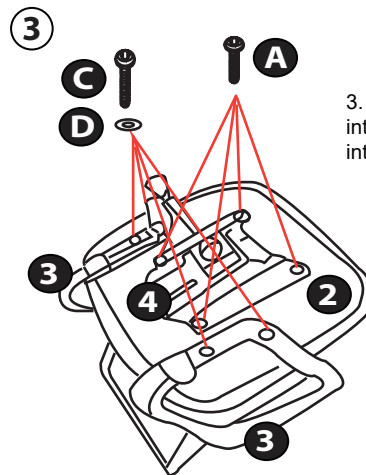
F - Hex Screwdriver x 1

1. Insert the 8 into the 5 into the 6. Install the 7x5 into the 6.

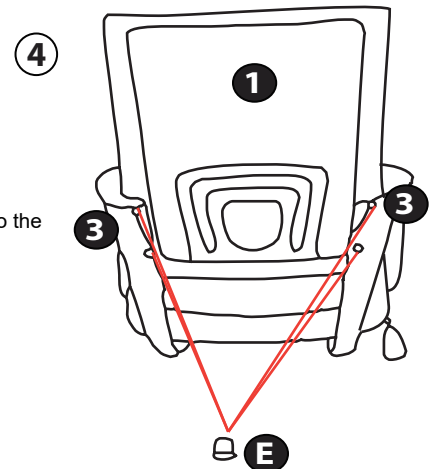
Assembly Instructions



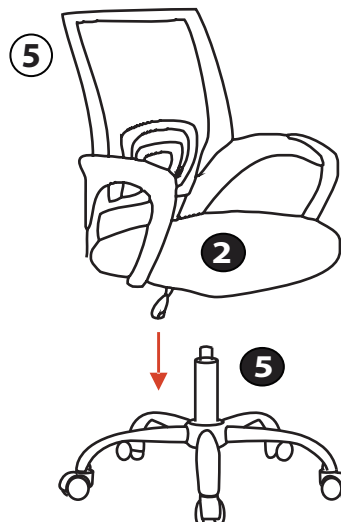
2. Turn the 1 upside down. Install the Bx4 into the 3x2 into the 1.



3. Insert A x 4 into the 4 into the 2. Insert C x 4 into the D x 4 into the 3x2.



4. Insert the E x 4 into the 3 x 2 into the 1.



5. Insert the 2 into the 5.

Congratulations! Setup of your new Swivel Mesh Office Chair is Complete!

