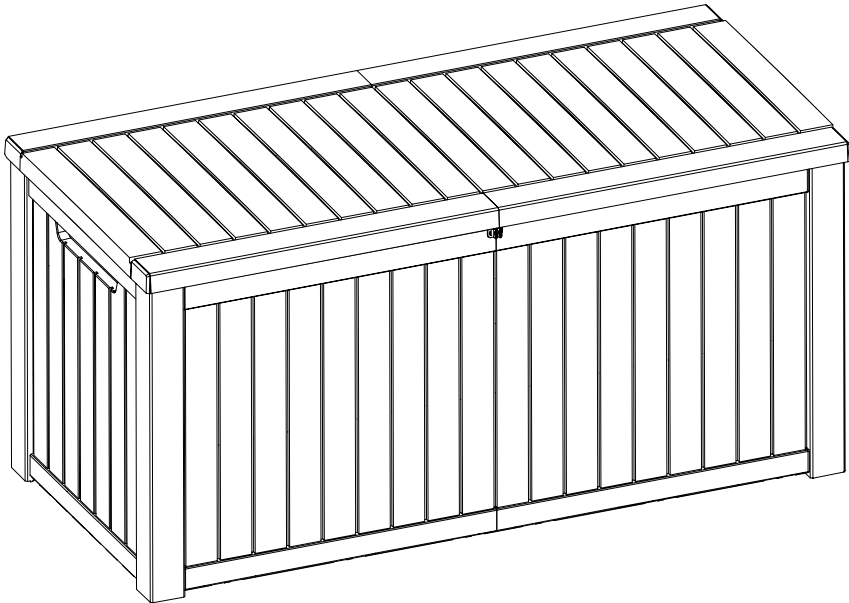
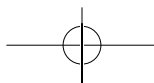
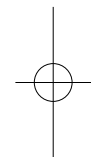
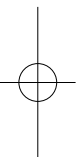
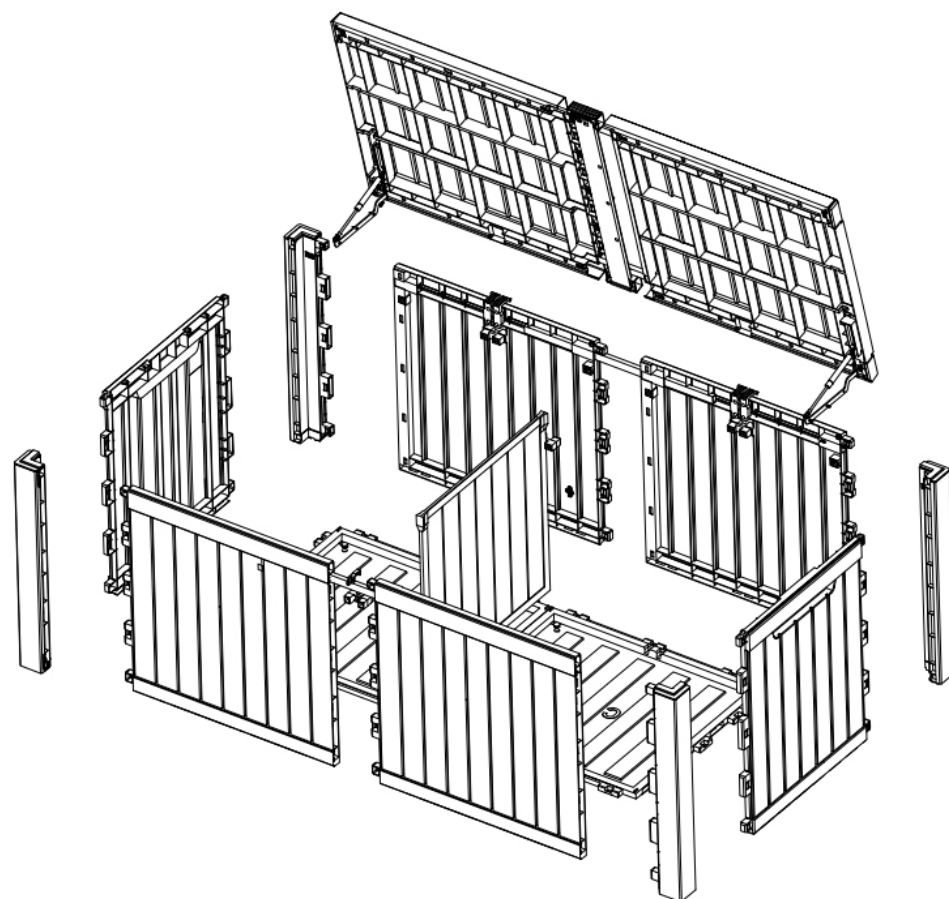
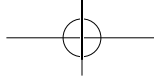
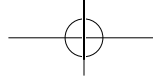


# 180 Gallon Deck Box

## Owner's Manual







## IMPORTANT CAUTION

Once installed, the product cannot be detached. Please strictly follow each step in the installation manual.

- Please check all parts and components to ensure that there are no damages or missing items before starting the construction of the product. If you have any problems or discover any missing parts, please contact customer service. Some parts may contain sharp edges. Wear protective gloves if necessary during assembly.
- When using power tools, please adjust the gear to the minimum, otherwise it will cause damage to the parts.

## ASSEMBLY INSTRUCTIONS

- DO NOT assemble this item alone for your safety. Two people are necessary for smooth and safe installation.
- We recommend using a rubber hammer and an electric screwdriver for better installation.
- Item identification: For ease of identification, all parts are labeled to correspond to the step number in which the part is used.
- **Tips: When installing the screws, fix them first, and then tighten the screws after they are all positioned.**

## CARE & SAFETY

- Check all panels for tightness before usage.
- It is of utmost importance to assemble all parts according to the directions. Do not skip any step.
- In case of fire, do not attempt to extinguish any burning polypropylene with water.
- Wear safety goggles and always follow the manufacturer's instructions when using power tools.
- Using a stiff brush or abrasive cleaner could damage the box.
- Hot items such as recently used grills, blowtorches, etc., must not be stored in the box.
- After rain, wipe the box with cloth before opening.
- Unsuitable for the storage of flammable or corrosive substances.
- Do not stand on the lid.
- To prevent the risk of suffocation, do not allow children to play inside the box.

## PARTS LIST



Front&Back Panel

A (X4)



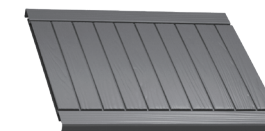
Side Panel

B (X2)



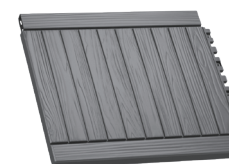
Bottom Board

C (X2)



Lid Panel

J (X1)



Lid Panel

F (X1)



Partition Panel

A1 (X1)



Lid Panel Reinforced Bridge

P (X1)



Reinforced Metal Rod

D (X4)



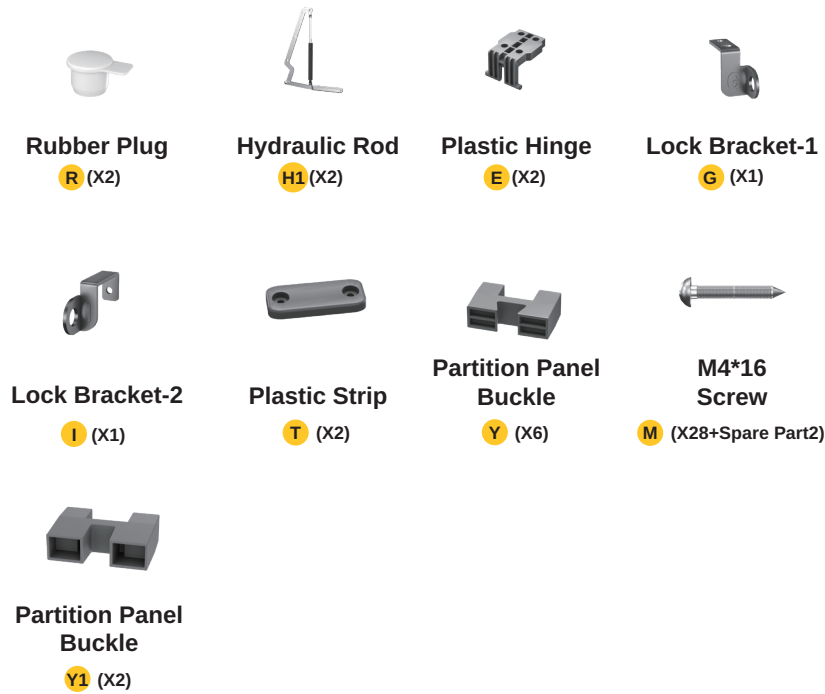
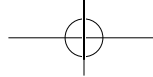
Lid Connector-1

G1 (X1)



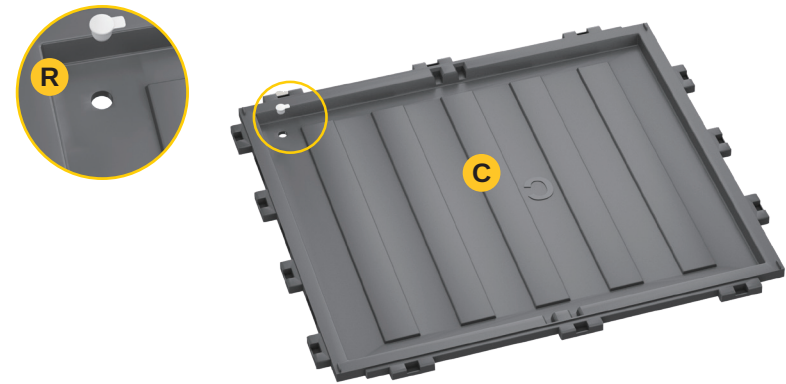
Lid Connector-2

G2 (X1)

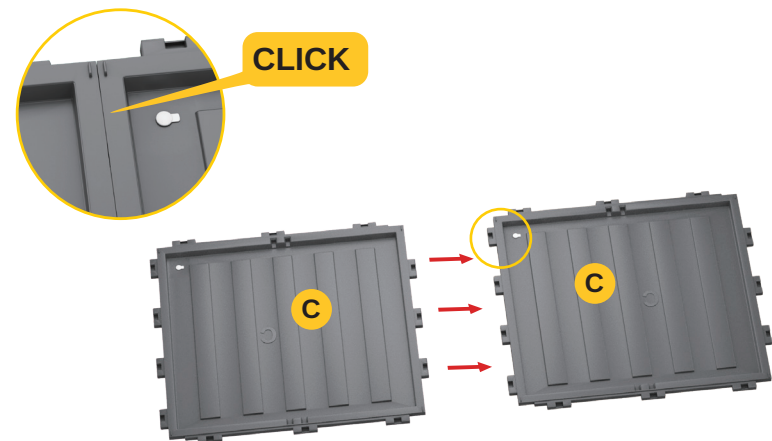
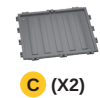


# 1 ASSEMBLY INSTRUCTIONS

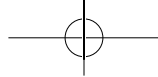
Align 2 Rubber Plugs R with the hole and install it on Bottom Panel C.



# 2 Put 2 Panels C on a flat ground so that snap tabs can be aligned easily.







3

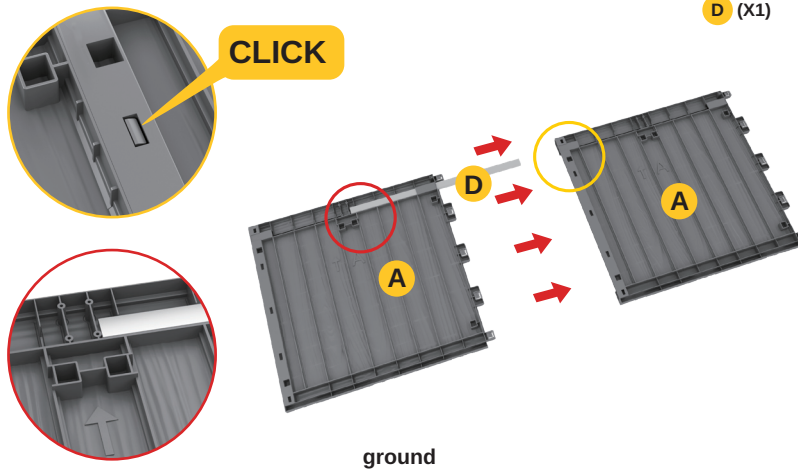
Install 2 Side Panels A: Insert 2 Reinforced Metal Rods D to the end and then buckle 2 panels together.

Please note that the directions of the arrows are consistent.



A (X2)

D (X1)



4

Repeat Step 3 to install the other 2 Side Panels A.

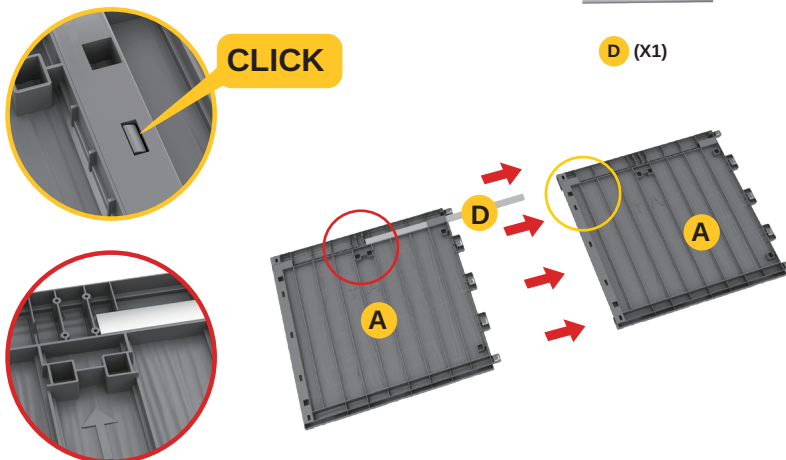


A (X1)



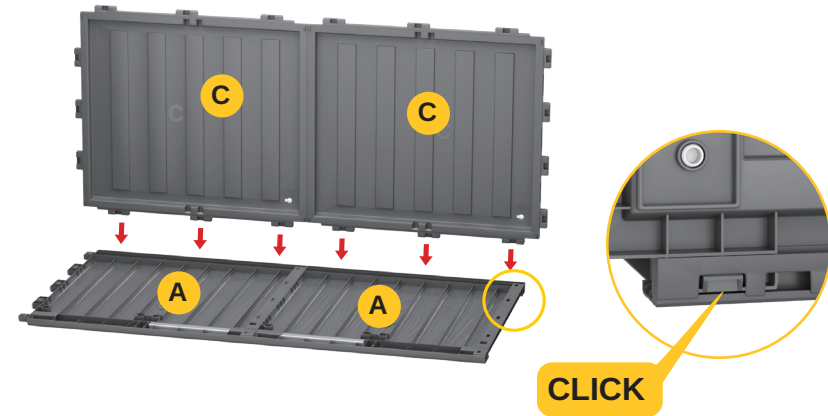
A (X1)

D (X1)



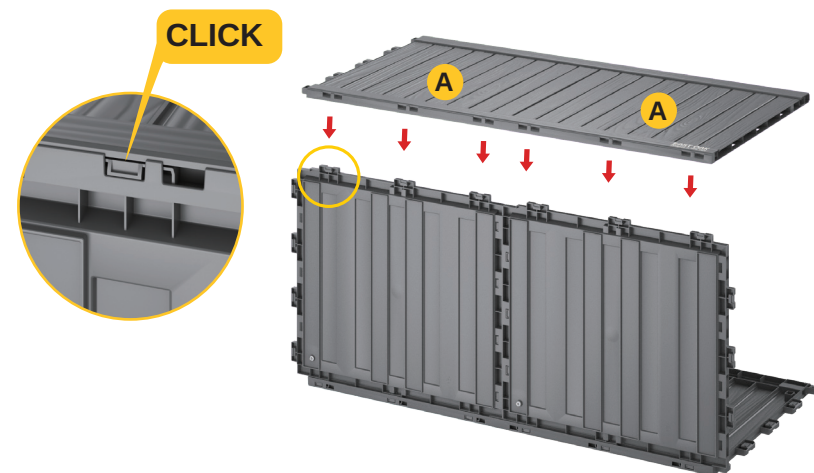
5

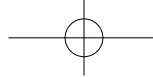
Put the assembled Side Panel A on the flat ground, and then buckle the Bottom Panel C in.



6

Repeat Step 5 to install the other side.



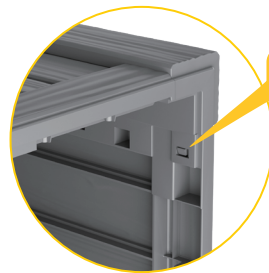
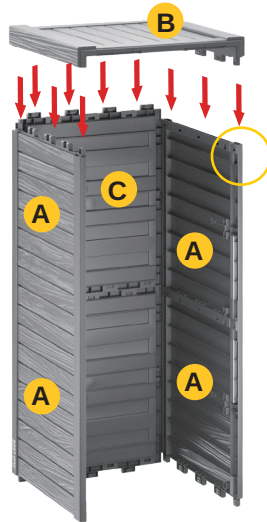


7

Please note that the directions of the arrows on Panel A and B are consistent.



B (X1)



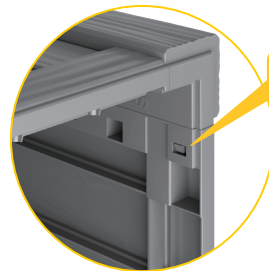
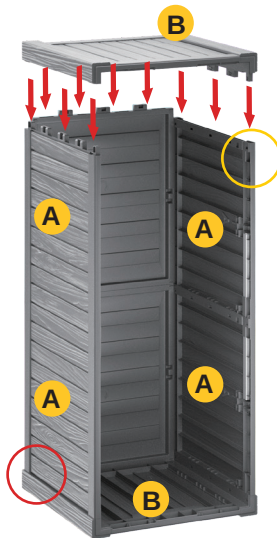
CLICK

8

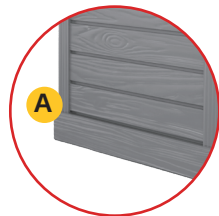
Please note that the directions of the arrows on Panel A and B are consistent.



B (X1)



CLICK



9

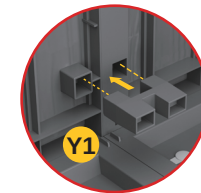
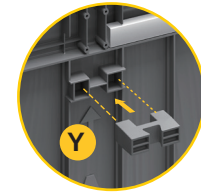
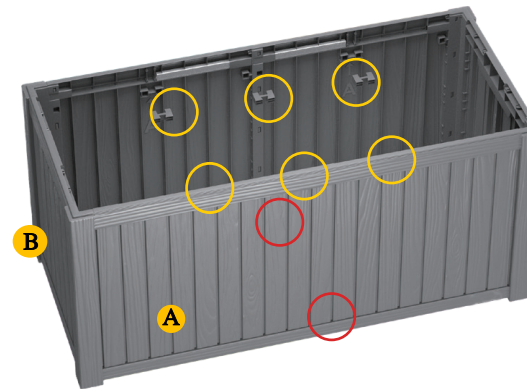
Attach 6 Partition Panel Buckles Y to 2 Side Panels A.



Y (X6)



Y1 (X2)



10

Install 2 Plastic Strips T and Lock Bracket-2 I to Panel A with 5 Screws.



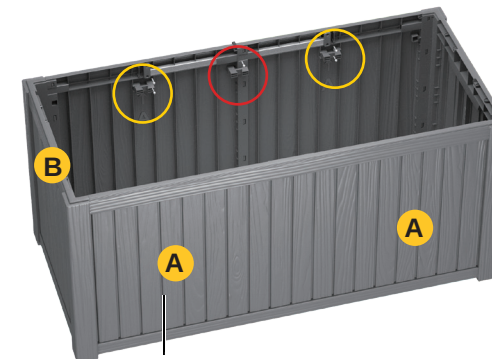
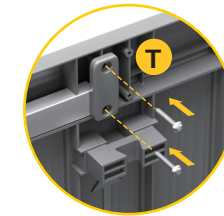
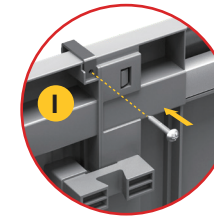
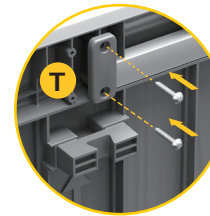
T (X2)

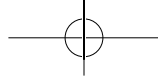


M4\*16  
M (X5)



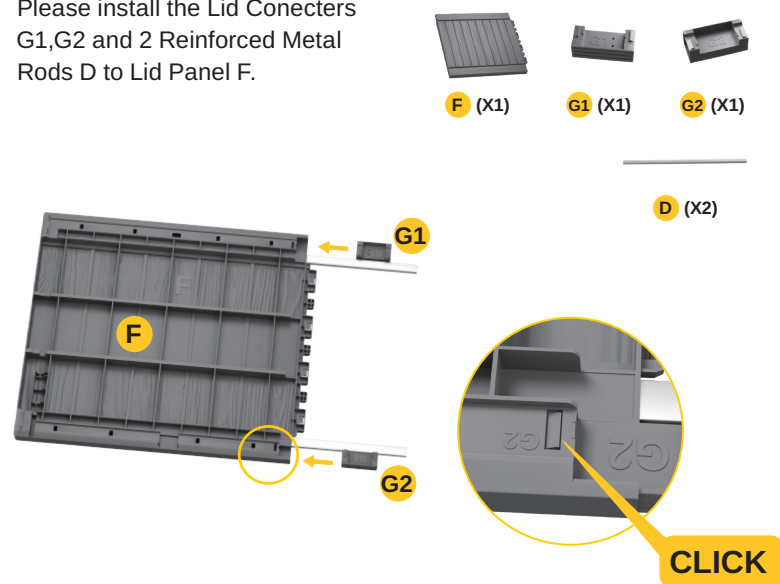
I (X1)





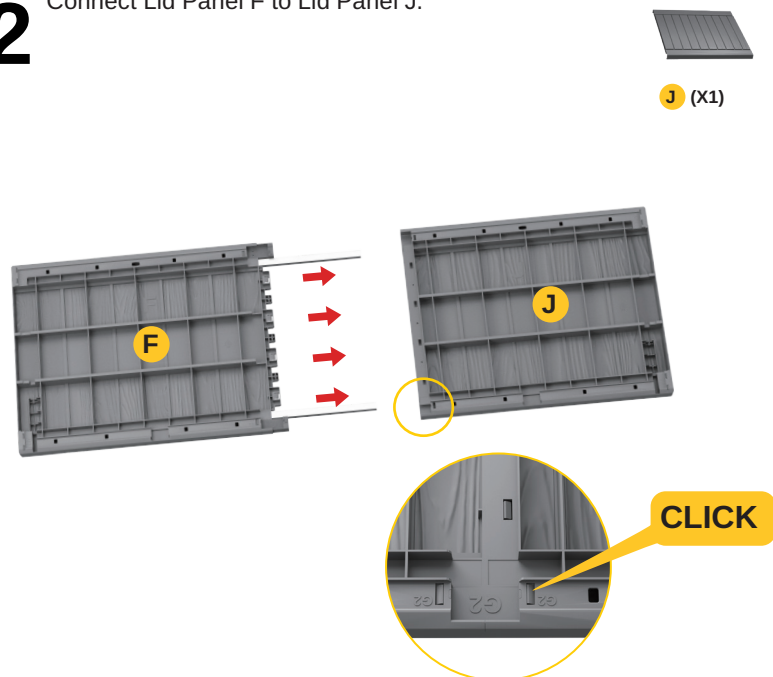
# 11

Please install the Lid Connectors G1,G2 and 2 Reinforced Metal Rods D to Lid Panel F.



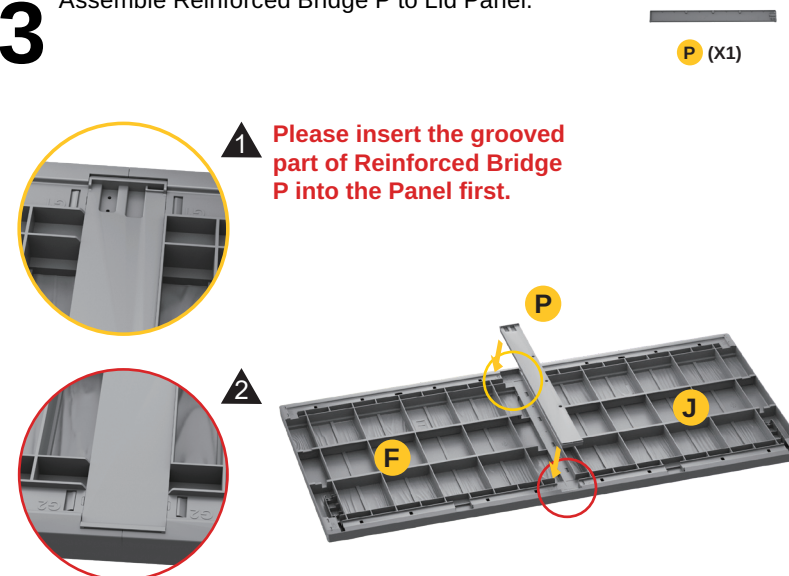
# 12

Connect Lid Panel F to Lid Panel J.



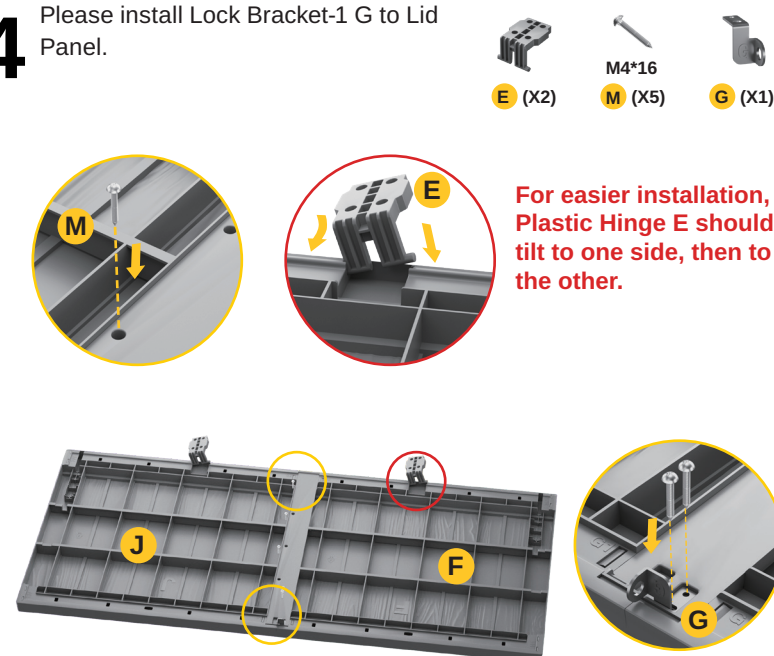
# 13

Assemble Reinforced Bridge P to Lid Panel.

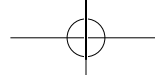


# 14

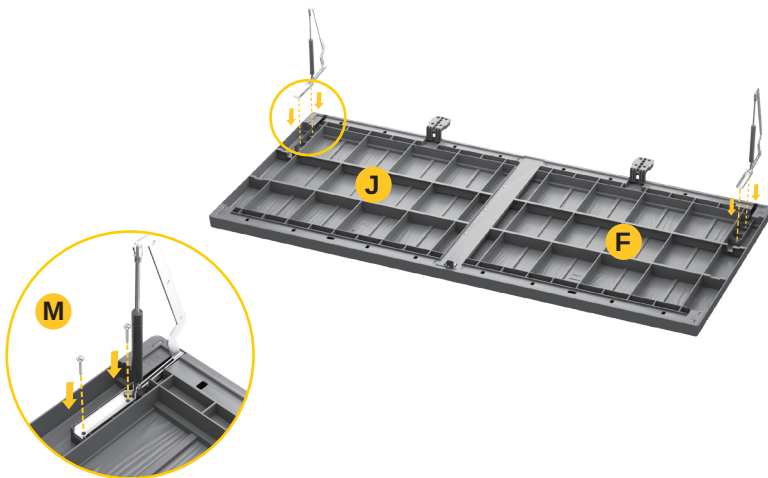
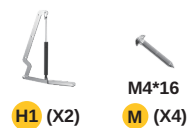
Please install Lock Bracket-1 G to Lid Panel.



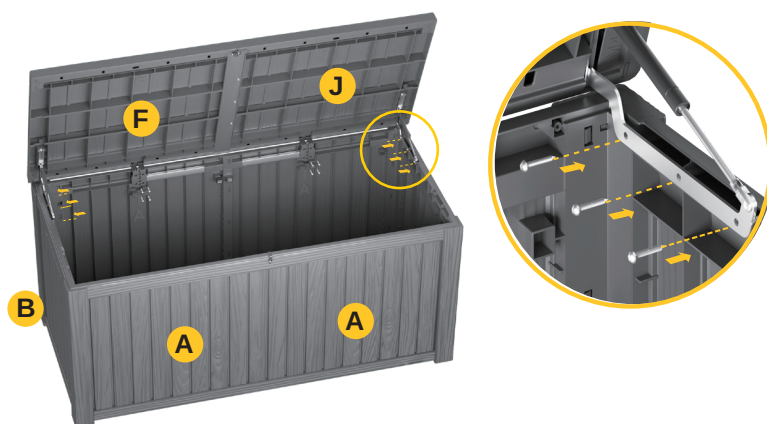




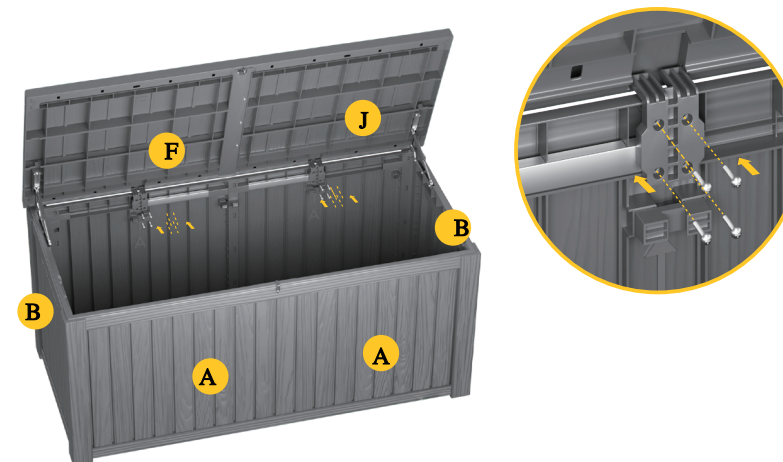
## 15 Assemble 2 Hydraulic Rods H1 to Lid Panel with 4 Screws.



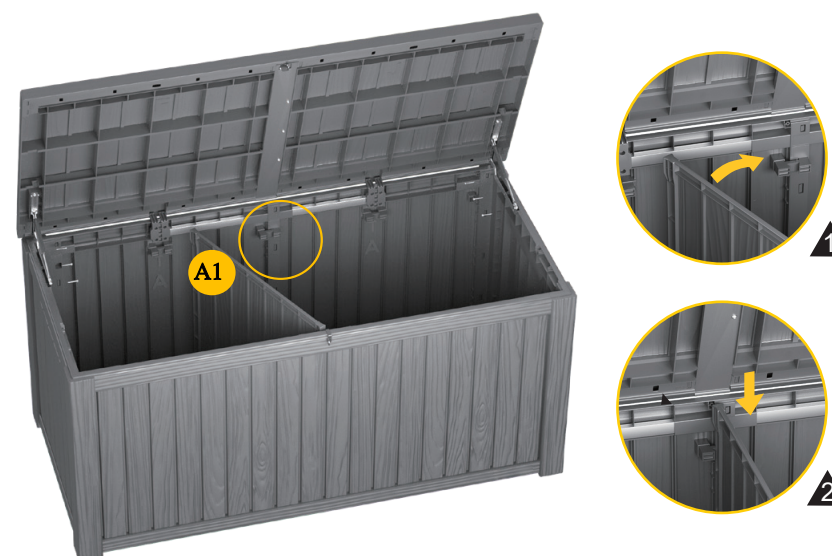
## 16 Assemble 2 Hydraulic Rods H1 to Side Panel B with 6 Screws.

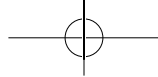


## 17 Tighten 2 Plastic Hinges E with 8 Screws.



## 18 Gently pull the side panel and align Partition Panel A1 with the card slot.





# 19

Installation completed.



## Product use and maintenance recommendations

1. At regular check the deck box to ensure that it's stable and assembly integrity has been maintained.
2. This deck box should be far away from the open flame.
3. If use outdoor, please keep the deck box in a dry and flat place and covered with rainproof cloth on the roof)
4. If the environment permits, install the deck box in a cool place, as prolonged exposure to direct sunlight may deform the panel and accelerate aging.
5. Do not store hot items (recently used grills, blowtorches etc.), flammable or caustic chemicals in the deck box.

6. Wash with a mild soap and water if there is any stain on the deck box. Do not use a stiff brush, bleach, ammonia or any other caustic cleaners, as these may damage the deck box or could result in permanent staining of the plastic. This is not manufacturing defect and is not covered under warranty.

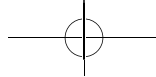
### Return policy

1. For return and exchange orders:

(1) If the deck box you received is damaged or defective and need to be returned or replaced with new one, please kindly send us real images (product itself or packages). We will check and deal with it quickly.

(2) For product quality reason return and exchange orders: please take real images and contact us, we will provide prepaid return label for return or replace new product.

(3) For these reasons (bought by mistake, no longer needed, does not meet expectation, size smaller or bigger than expectation) return and exchange orders: customer need to cover the return shipping costs.



---

## FEATURES

- Weatherproof and Waterproof Outdoor Furniture
- UV and Fade Resistance
- Durable and Long-lasting Use
- Easy to Assemble
- Marine-grade Quality Hardware
- Comfortable Side Handles
- Upgraded PP Material to Prevent Bending and Fading
- Use for Indoors and Outdoors, Pillows, Pool Toys, Garden Tools, Furniture and Sports Equipment
- Great Option for Home Storage and Organization

---

## WHAT'S IN THE BOX

- 11 Deck Box Assemblies
- 1 Lid Panel Reinforced Bridge
- 4 Reinforced Metal Rods
- 2 Hydraulic Rods
- Screw Package
- User Manual

