



Thank you for purchasing the Wondurdog Deluxe Bathtub Spout Dog Wash Kit



Wondurdog gives back. When you buy a Wondurdog product we donate 10% of proceeds to **ThePetFund.com**
The Pet Fund saves lives by helping pets and owners who can't afford veterinarian care get the care they need.

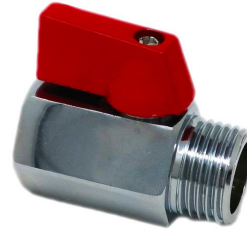
Included in the dog wash kit:



6 foot shower hose



Chrome shower brush head with water pressure control



Shut off ball valve for shower pipe



Bathtub spout diverter



Splash jacket



Drawstring storage bag

Set-up Instructions:

- See reverse side **OR** view a short instructional set-up video at wondurdog.com.
- **If you have questions about installation, please contact us at support@wondurdog.com. We're here to help. REALLY!**

Features of the Shower brush head:

- To temporarily stop water flow to brush head, move switch to OFF position.*
- Slide valve at base of brush to adjust water pressure.
- The brush head has two key positions:
 - For more control on the direction of water and to prevent splashing, keep rubber shield in DOWN position.
 - For deep cleaning and to remove dirt and debris, flip the rubber shield to UP position.



***IMPORTANT:** If you leave the water on and the shower brush in the OFF position for an extended period of time, it can cause breakdown such as water leak, head burst, and water flowing backwards.
ALWAYS turn the water off when finished using the product and leave the brush in the ON position.

Questions/Comments?

E-mail us at support@wondurdog.com
We'd love to hear from you!

We invite you to post pictures of your muddy puppy and/or your clean *Wondurdog* pup on social media



facebook.com/wondurdog



instagram.com/wondurdog



Deluxe Bathtub Spout Dog Wash Instructions

View a short instructional video at www.wondurdog.com or here:

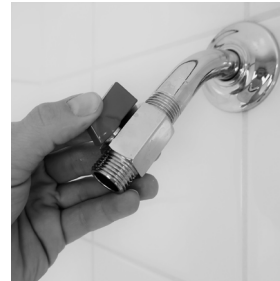


Indoor Installation

1. Remove existing showerhead with pliers or by hand (righty-tighty; lefty-loosey).



2. Install shut off valve on your shower pipe. Ensure washer is installed. Tighten by hand. **Do not over tighten!** Over tightening will cause leaks.



3. Screw showerhead onto the front of shut off valve. Tighten firmly by hand.



4. Keep the valve lever in the ON position (180° or parallel to pipe) to operate your shower normally. **This valve stays installed.**

5. When it's time for a dog bath, turn the valve lever to the OFF position (90° or perpendicular to pipe) to stop the flow of water to your shower head. **THIS MUST BE DONE for the kit to function properly.**



6. Unscrew the top of the tub spout diverter so that it is in two pieces - top and bottom. The top is the smaller piece.



7. Tilt and slide the bottom of the tub spout diverter over your tub spout.



8. Lift the spout diverter all the way up to your tub spout so that the black rubber washer makes firm contact with the bottom of your spout.



9. Screw top of tub spout diverter onto bottom piece. **Firmly tighten over your tub spout's tee.** (The tee diverts water to your shower head.) **DO NOT INSTALL HOSE YET**



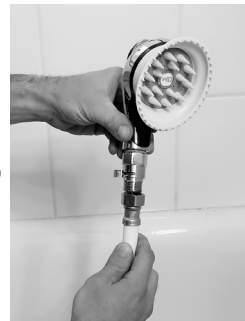
10. Water should flow through outtake with no water spilling out the back. **If water spills from back, reposition and/or reinstall.**



11. If water flows with **NO back spill**, turn water OFF and screw the larger end of the hose onto the outtake of the tub spout diverter.



12. Screw the smaller end of the hose onto the shower control valve* attached to the end of the brush head. Tighten firmly by hand.



*Slide valve at base of brush to adjust water pressure.



13. Place the splash jacket over the tub spout diverter and hose. The magnets should be on the inside of the jacket, facing one another.



14. Connect the four magnet pairs with the hose between two of the magnet pairs.



That's it!
You're ready for bath time!

Indoor Operation

1. Slide switch on shower brush head into the ON position.

2. Turn the shut off valve to the OFF position (90° or perpendicular to pipe).

3. Ensure splash jacket magnets are securely connected to reduce water spray from tub spout and tub spout diverter.

***Note* When the brush head is in the OFF position more water will spray from your tub spout and tub spout diverter.**

4. Turn on water. Adjust to desired water temperature and begin bathing. Adjust pressure as desired.

5. When finished, turn the valve to the ON position. (180° or parallel to pipe). Shower is ready for normal use. Store kit components in drawstring bag.

Outdoor Installation

1. Screw the large end of the white hose onto the end of your garden hose.



2. Screw shower brush & water pressure control valve onto smaller end of the white hose.



3. Turn on water from your spigot. You are ready to wash!

***Note* Leaving the water flow on and the brush head in the OFF position for an extended amount of time will degrade the brush head and lead to leaks or damage.**