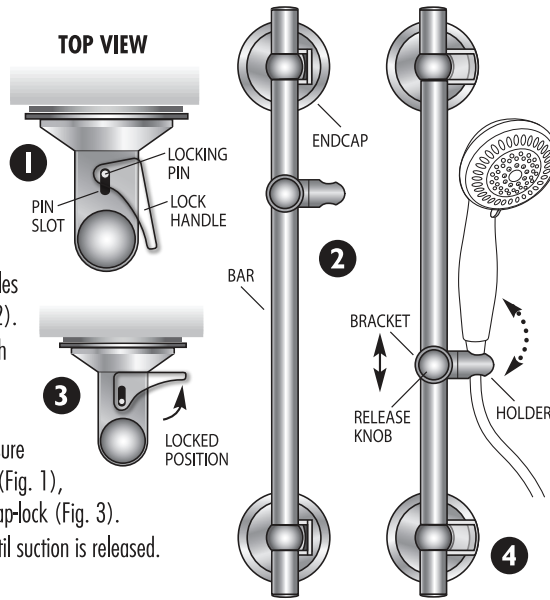


Insta-Mount®

Shower Slide Bar



To Mount on Smooth Surfaces

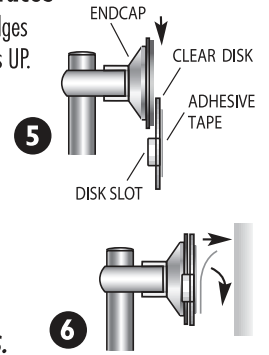
1. Clean and dry desired surface. Make sure Endcaps are in UNLOCKED position (Fig. 1).
2. Slide Endcaps onto Bar ends with Lock Handles located on the same side, left or right (Fig. 2).
3. Place Bar vertically with Vacuum Pads of both Endcaps pressed firmly against surface.
4. With Endcaps pressed against surface, press upper sides of Lock Handles FORWARD to insure that Locking Pin reaches the end of Pin Slot (Fig. 1), then push Lock Handles DOWN until they snap-lock (Fig. 3).
5. To remove Slide Bar, lift Lock Handles UP until suction is released.

To Adjust Hand Shower Bracket

Position Release Knob facing you or the wall with Holder on right or left. Slide your Hand Shower into Holder (Fig. 4). Push Knob to move Bracket UP, DOWN or ACROSS. Turn Holder FORWARD or BACK to adjust hand shower angle.

To Mount with Adhesive Disk on Rough and Textured Surfaces

1. Attach Clear Disk with Adhesive Tape to each Endcap by sliding Endcap perimeter edges into Disk Slots (Fig. 5). Make sure that TOP arrow on back side of Clear Disk points UP.
2. Clean and dry surface. Make sure air is free of steam and moisture.
3. Remove back of Adhesive Tape on Clear Disk (Fig. 6).
4. Press Endcap(s) assembly firmly against surface. Allow 12 hours for adhesive to set hold before adding weight of towels or creating wet/moist conditions.



If you have installation problem or missing parts, please DO NOT return this product before calling us first. We can easily solve it on the phone or by quickly sending needed parts.

FIVE YEAR LIMITED WARRANTY

InterLink will repair or replace any of this product's parts that exhibit defects in workmanship or materials for five years from date of purchase. If malfunction occurs, send only defective part(s) with proof of purchase to Customer Service Department at the address listed below. Your warranty does not cover malfunction or damage due to accident, misuse, or failure to follow any written instructions accompanying this product.

Interlink Products 1315 E. Elizabeth Ave., Linden, NJ 07036

For Installation Help / Part Replacement

Call Toll Free **1-888-869-4010**

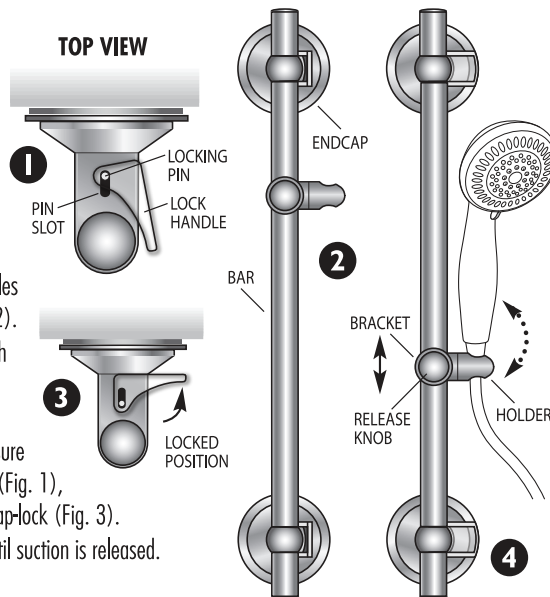
Mon. - Fri. 9:00am - 4:00pm Eastern Standard Time

www.ipshowers.com

Maximum Weight Capacity 20 lb
Patent Pending Made in China

Insta-Mount®

Shower Slide Bar



To Mount on Smooth Surfaces

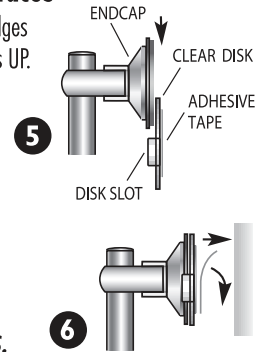
1. Clean and dry desired surface. Make sure Endcaps are in UNLOCKED position (Fig. 1).
2. Slide Endcaps onto Bar ends with Lock Handles located on the same side, left or right (Fig. 2).
3. Place Bar vertically with Vacuum Pads of both Endcaps pressed firmly against surface.
4. With Endcaps pressed against surface, press upper sides of Lock Handles FORWARD to insure that Locking Pin reaches the end of Pin Slot (Fig. 1), then push Lock Handles DOWN until they snap-lock (Fig. 3).
5. To remove Slide Bar, lift Lock Handles UP until suction is released.

To Adjust Hand Shower Bracket

Position Release Knob facing you or the wall with Holder on right or left. Slide your Hand Shower into Holder (Fig. 4). Push Knob to move Bracket UP, DOWN or ACROSS. Turn Holder FORWARD or BACK to adjust hand shower angle.

To Mount with Adhesive Disk on Rough and Textured Surfaces

1. Attach Clear Disk with Adhesive Tape to each Endcap by sliding Endcap perimeter edges into Disk Slots (Fig. 5). Make sure that TOP arrow on back side of Clear Disk points UP.
2. Clean and dry surface. Make sure air is free of steam and moisture.
3. Remove back of Adhesive Tape on Clear Disk (Fig. 6).
4. Press Endcap(s) assembly firmly against surface. Allow 12 hours for adhesive to set hold before adding weight of towels or creating wet/moist conditions.



If you have installation problem or missing parts, please DO NOT return this product before calling us first. We can easily solve it on the phone or by quickly sending needed parts.

FIVE YEAR LIMITED WARRANTY

InterLink will repair or replace any of this product's parts that exhibit defects in workmanship or materials for five years from date of purchase. If malfunction occurs, send only defective part(s) with proof of purchase to Customer Service Department at the address listed below. Your warranty does not cover malfunction or damage due to accident, misuse, or failure to follow any written instructions accompanying this product.

Interlink Products 1315 E. Elizabeth Ave., Linden, NJ 07036

For Installation Help / Part Replacement

Call Toll Free **1-888-869-4010**

Mon. - Fri. 9:00am - 4:00pm Eastern Standard Time

www.ipshowers.com

Maximum Weight Capacity 20 lb
Patent Pending Made in China