

Kitchen Cart

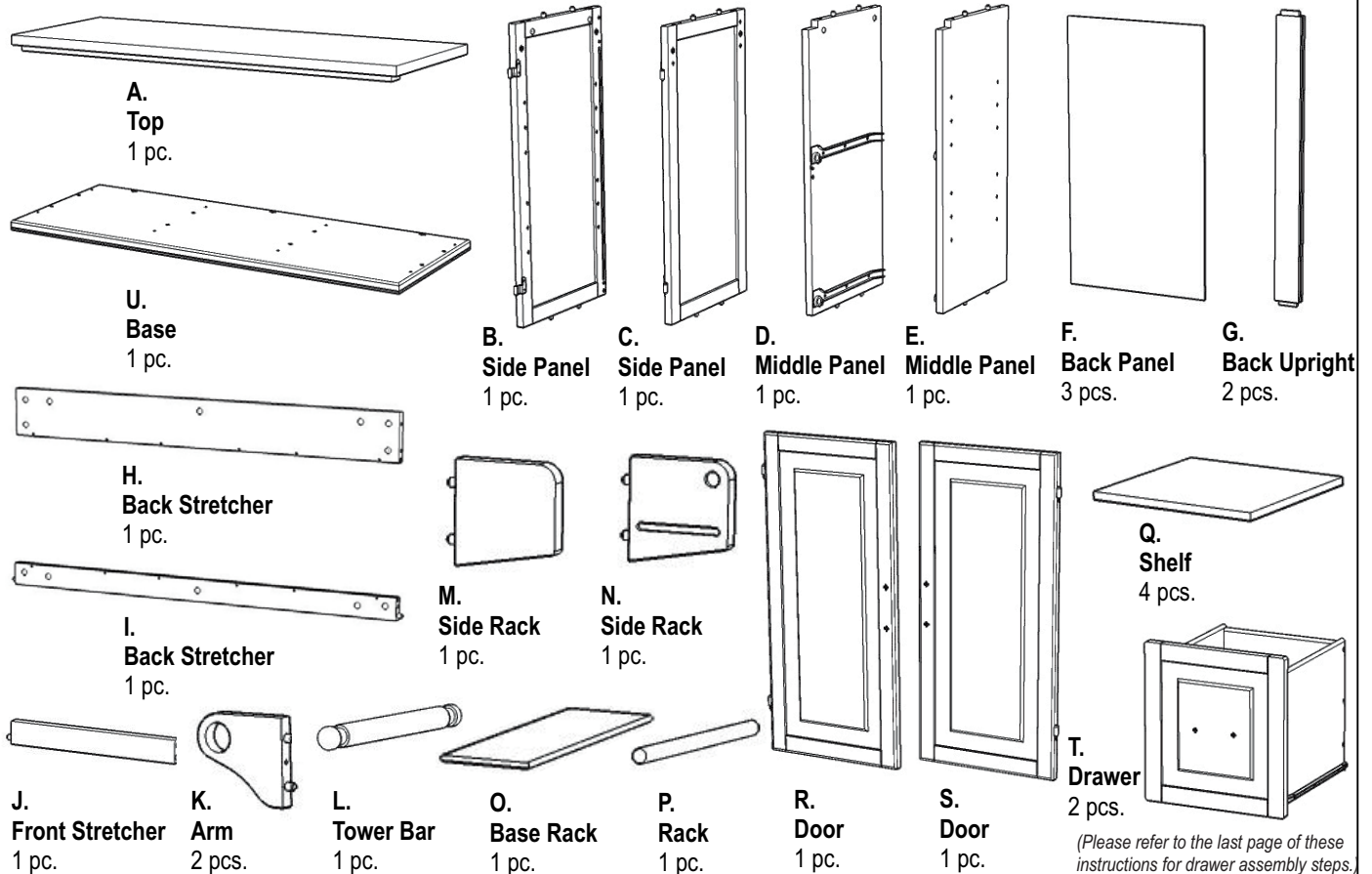


IMPORTANT NOTE

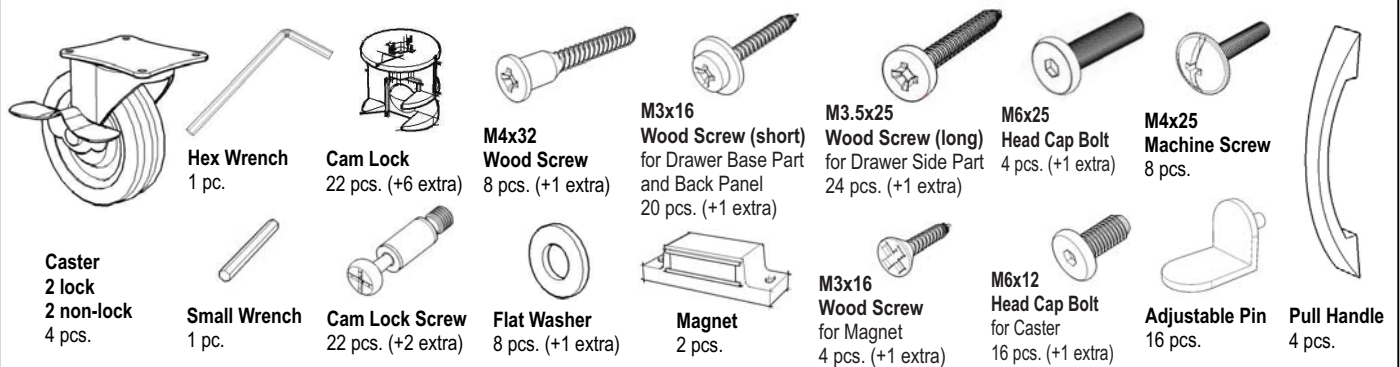
Carefully remove all the parts from the carton and put them individually on a soft cloth to prevent scratches or other damage occurring to the parts.

We have taken great care in the design of this product and request that you carefully and strictly follow our assembly instructions to ensure a completed product as it was designed.

Part List



Hardware List



Tools required for assembly : Phillips screwdriver

IMPORTANT

- * Please keep Hex Wrench in a safe place as you may need to tighten up the Head Cap Bolts in the future.
- * Do not tighten up all the bolts until each part is properly assembled.
- * Use a soft cloth between these parts and the floor.

STEP 1

Insert Cam Lock Screws into pre-drilled holes of Top (A), Side Panels (B), (C), Middle Panels (D), (E) and Base (U). (See Figure 1)

Attach Magnets to Top (A) with Wood Screws for Magnet. (See Figure 2)

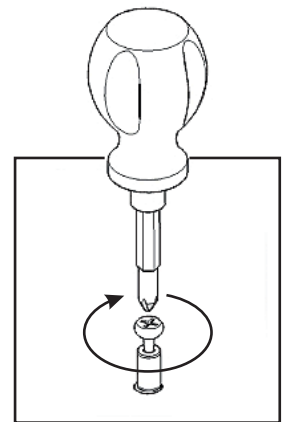
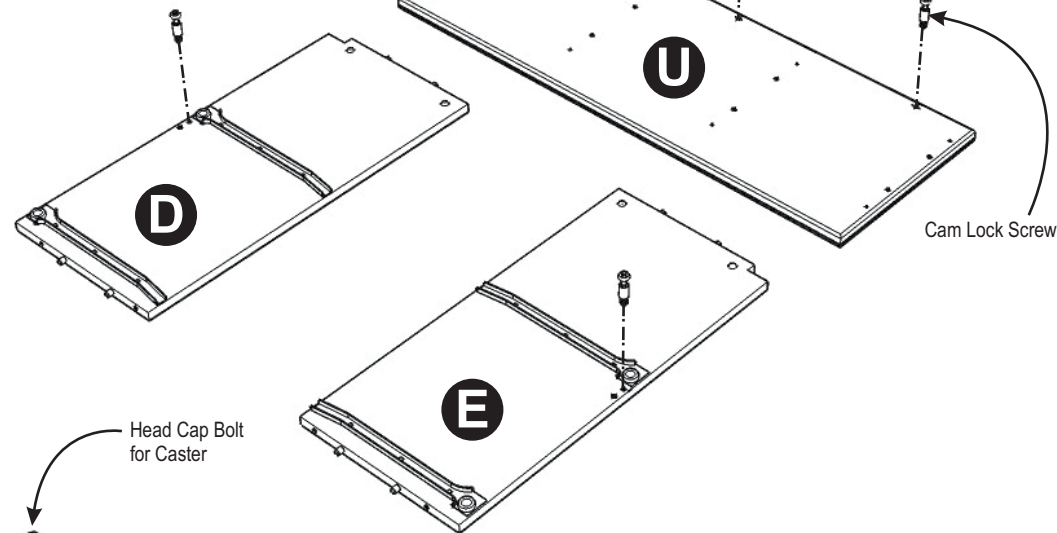
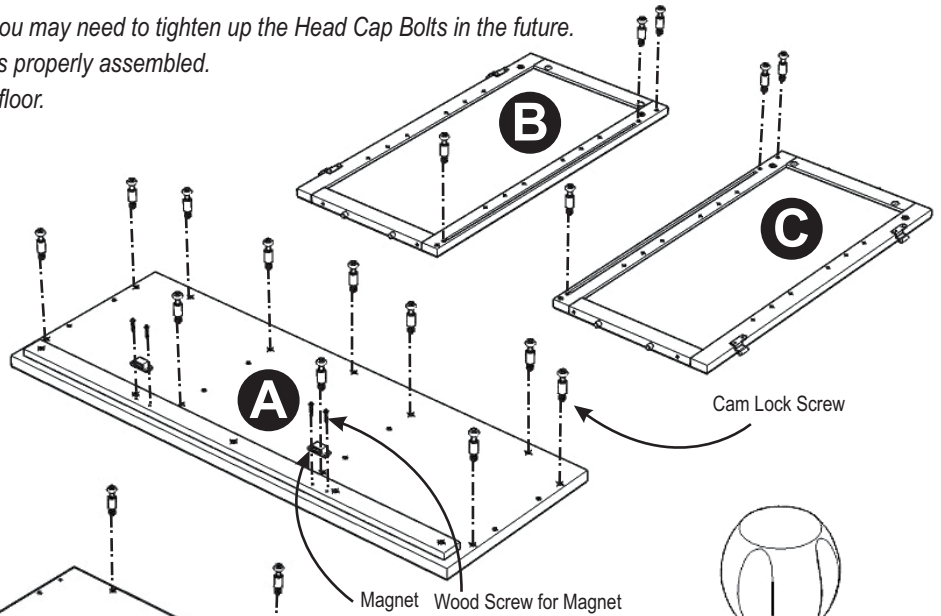


Figure 1

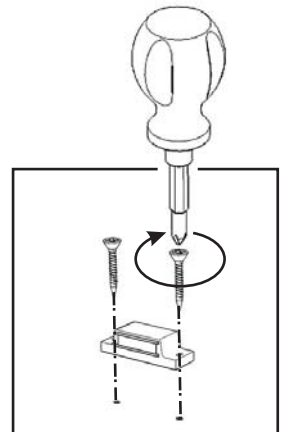


Figure 2

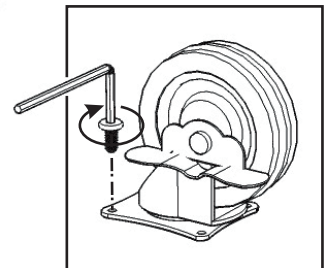
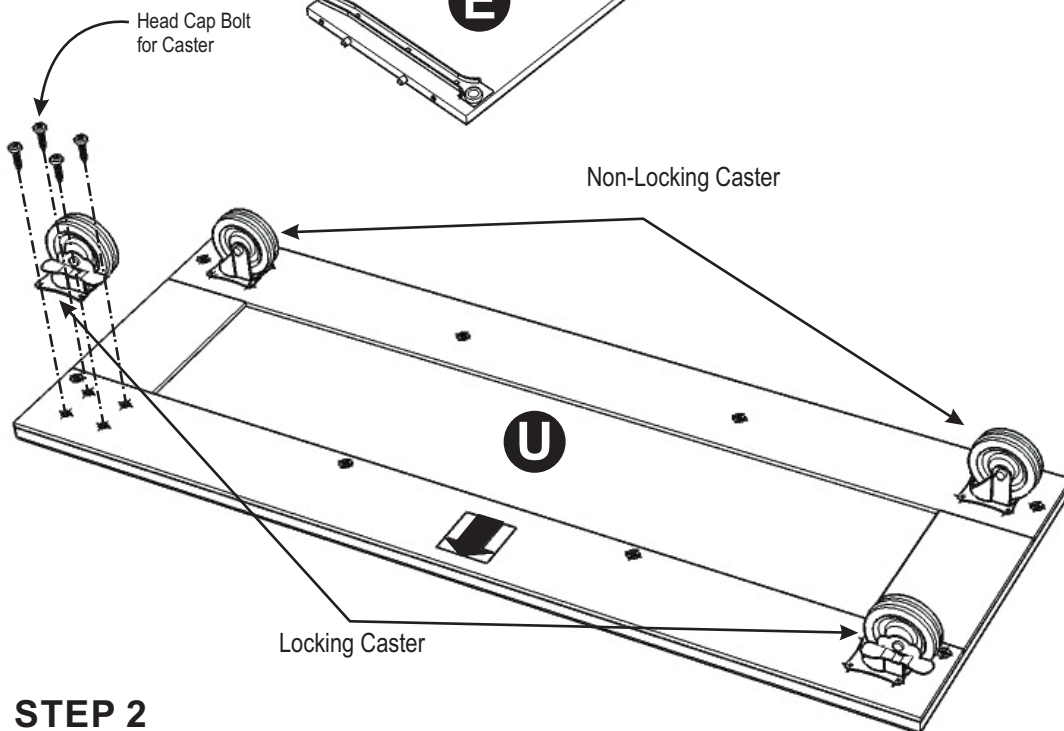


Figure 3

STEP 2

Attach 4 Casters underneath Base (U) with Head Cap Bolts for Caster, put 2 Locking Casters on the front. (See "Arrow" sticker indicating front side) (See Figure 3)

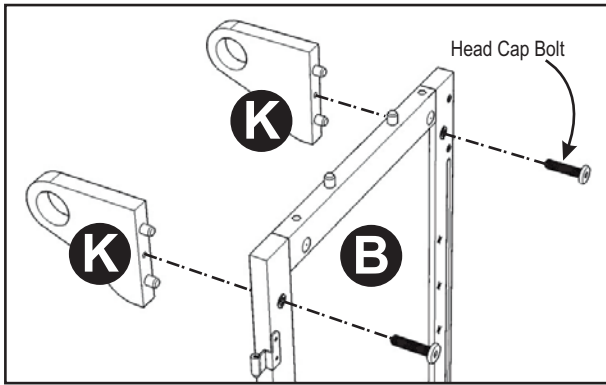


Figure 4

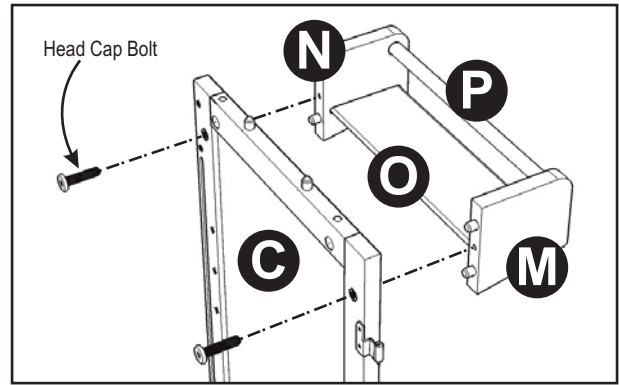
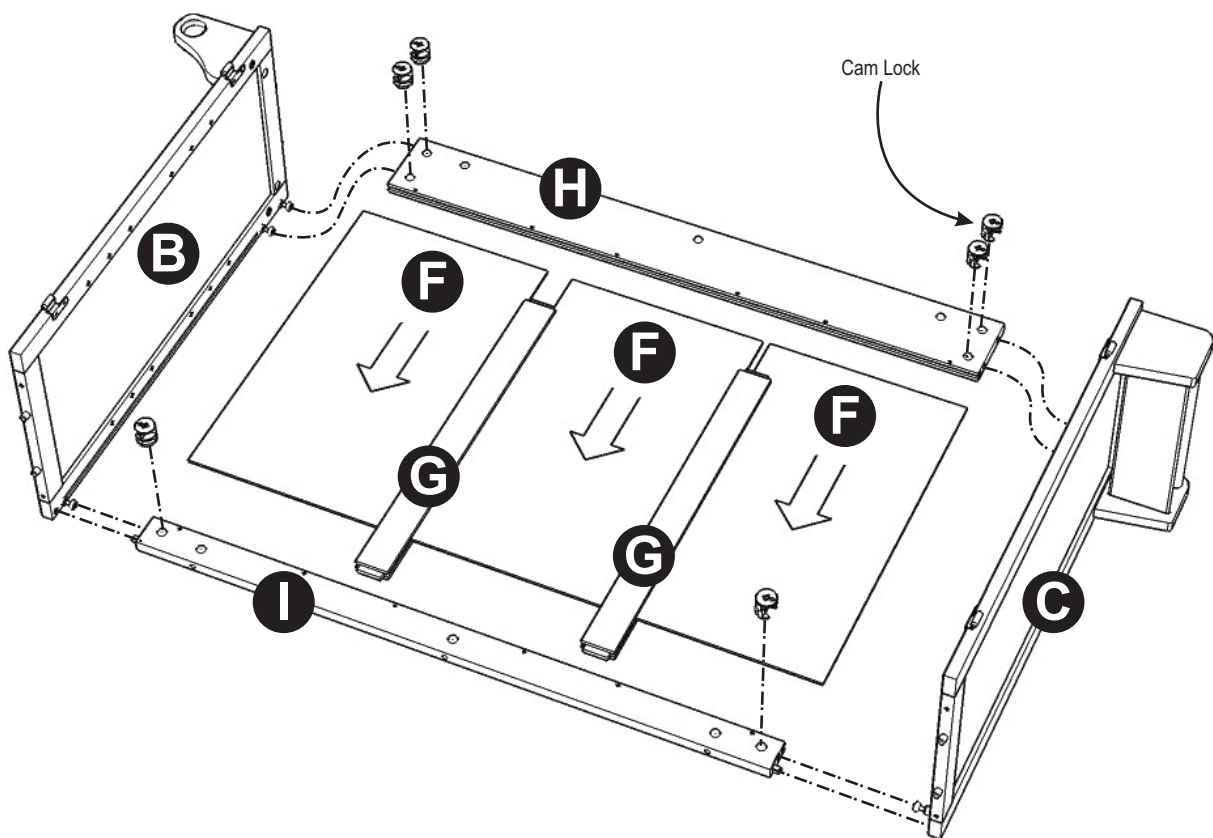


Figure 5

STEP 3

Attach Arms (K) to Side Panel (B) with Head Cap Bolts. (See Figure 4)

Assemble Side Racks (M), (N), Base Rack (O) and Rack (P), then attach to Side Panel (C) with Head Cap Bolts. (See Figure 5)



STEP 4

Attach Back Stretcher (I) to Side Panel (B) with Cam Lock. (See Figure 6)

Attach Back Uprights (G) to unit, then slide Back Panels (F) into position.

Attach Back Stretcher (H) to unit with Cam Locks.

Attach Side Panel (C) to unit with Cam Locks.

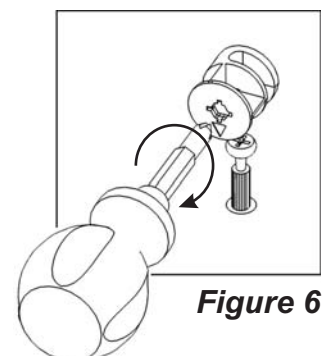
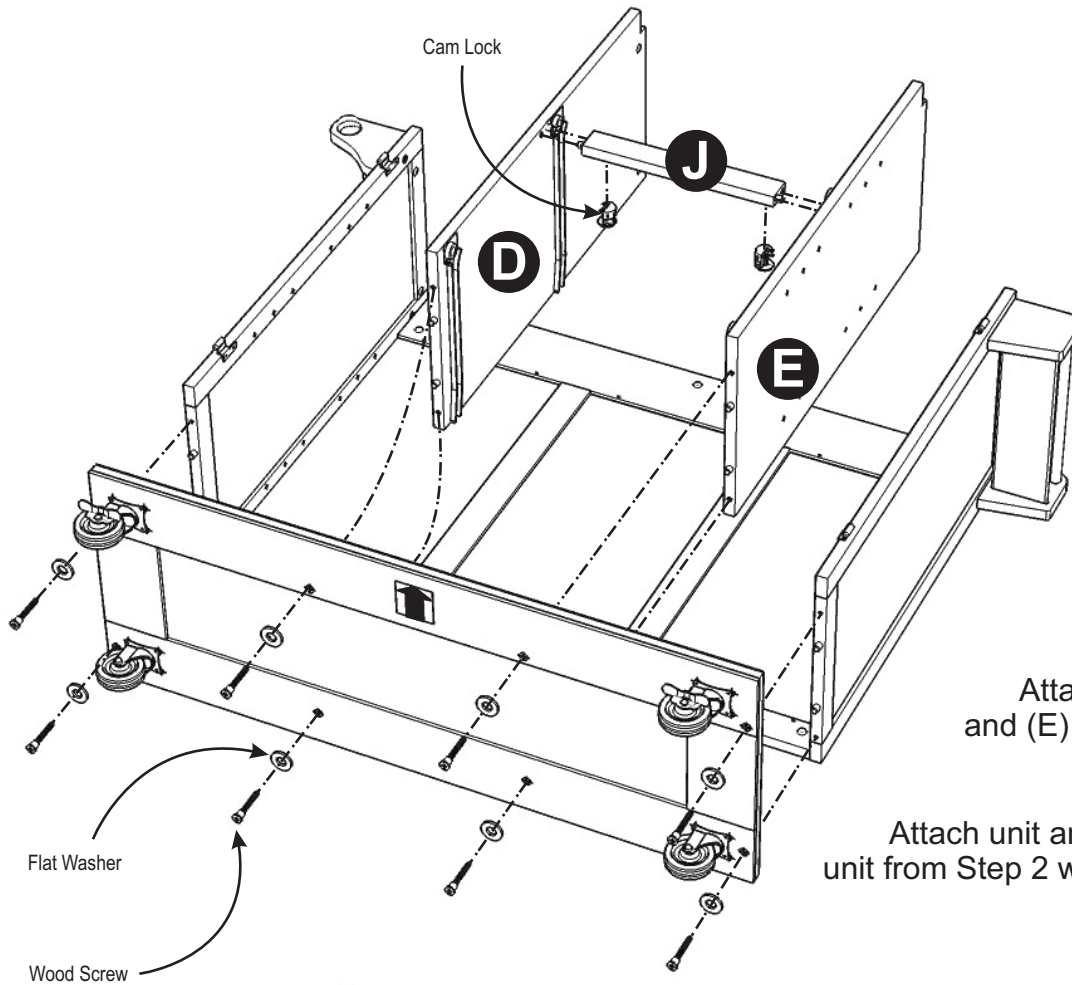


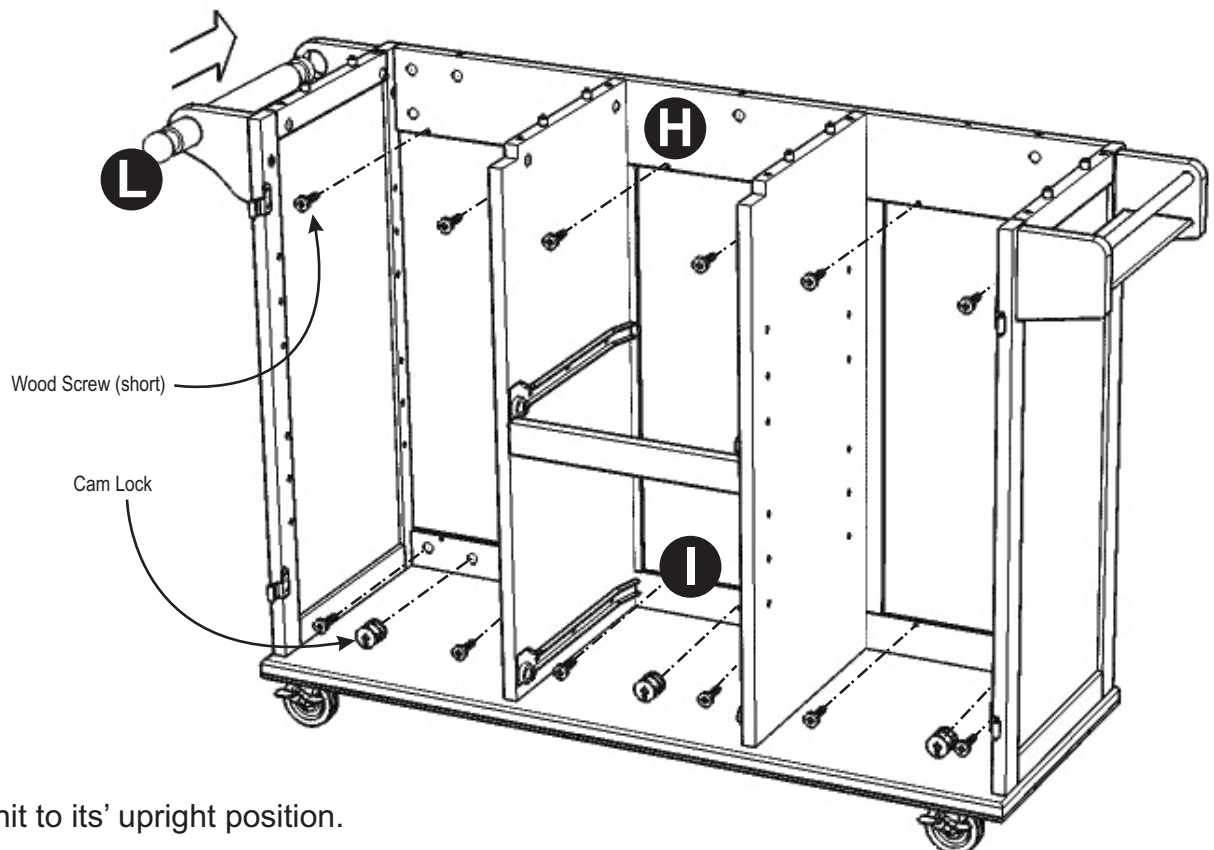
Figure 6



STEP 5

Attach Middle Panels (D) and (E) to Front Stretcher (J) with Cam Locks.

Attach unit and unit from Step 4 to unit from Step 2 with Flat Washers and Wood Screws.

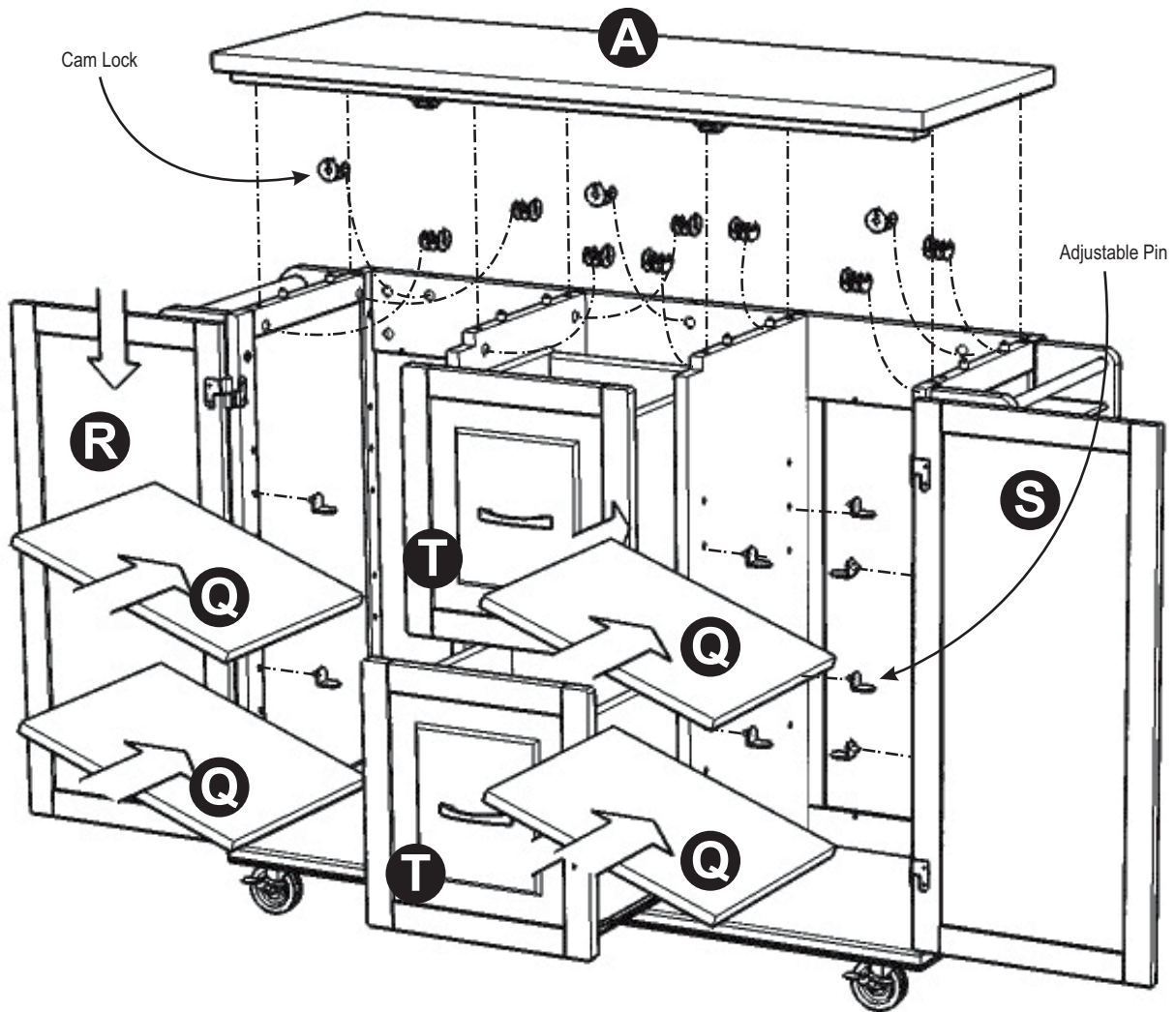


STEP 6

Turn the unit to its' upright position.

Insert Wood Screws (short) and Cam Locks into pre-drilled holes of Back Stretchers (H) and (I) and tighten.

Slide Tower Bar (L) into place.



STEP 7

Attach Pull Handles to Doors (R) and (S) with Machine Screws. (See Figure 7)

Attach Doors (R) and (S) by sliding the door life hinges to side panel lift hinges. (See Figure 8)

Attach Top (A) to unit with Cam Locks.

Insert Adjustable Pins into side panels and middle panels at the desired level, then place Shelves (Q) into position.

Slide Drawers (T) into position.

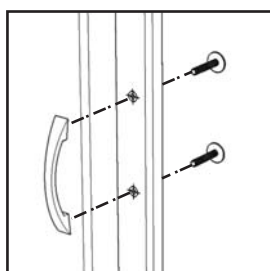


Figure 7

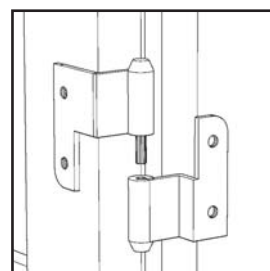
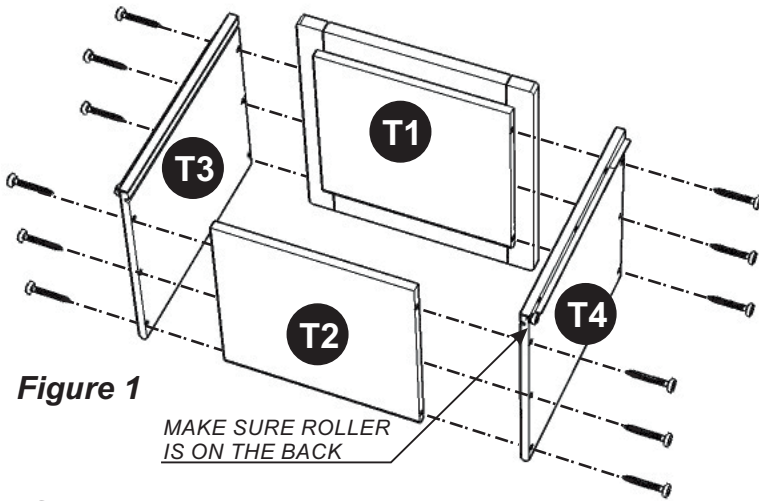


Figure 8

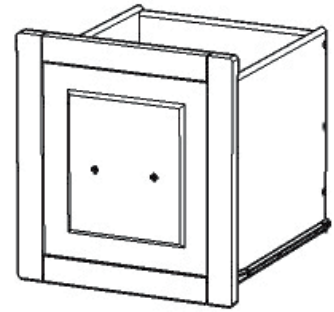
Drawer T



STEP 1

Attach T1, T3 and T4 using a Phillips screwdriver and long wood screws (6X), tighten halfway.

Attach T2, T3 and T4 using a Phillips screwdriver and long wood screws (6X), tighten halfway. (See Figure 1)



STEP 2

Slide T5 into groove of T3 and T4. Be sure to push T5 all the way forward so it meet T1. (See Figure 2)

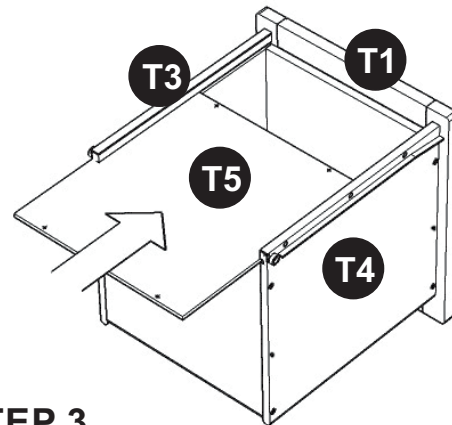


Figure 2

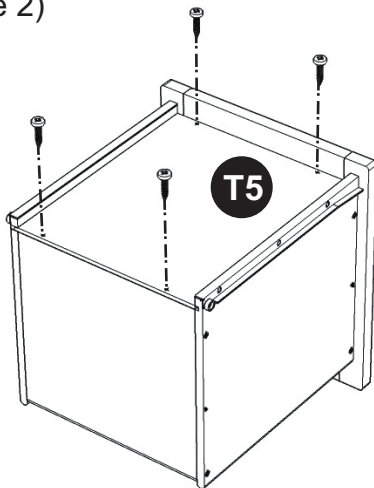


Figure 3

STEP 3

Insert wood screws into pre-drilled holes of T5, tighten screws. (See Figure 3)

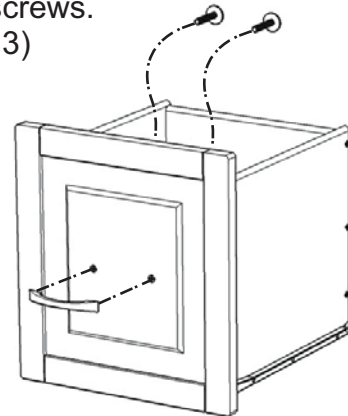


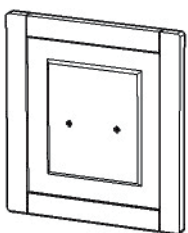
Figure 4

STEP 4

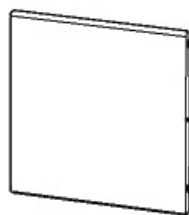
Attach Pull Handle with Machine Screws. (See Figure 4)

Tighten all screws used in drawer assembly.

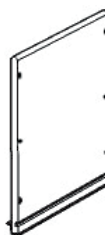
Part List



T1.
Front Part
2 pcs.



T2.
Back Part
2 pcs.



T3.
Side Part
2 pcs.



T4.
Side Part
2 pcs.



T5.
Base Part
2 pcs.