

Thank you for choosing our products. If you have any questions, comments or concerns please feel free to contact us.

We stand behind our brand and the quality of the items we sell. We will send new parts, or replace products at our discretion within the one year warranty period. Before we can help, you will need to provide proof of purchase with the date of purchase and photos of the defective merchandise. We will use the photos to determine the cause of defect and for future quality control.

INSTRUCTION MANUAL

Thank you for purchasing this fine decorative fountain. This product combines our latest design with a creative theme, and is carefully packaged, inspected, and tested to ensure safe operation. The following instructions and safety guidelines will enable you to use the product with trouble-free operation. Please read the instructions and safety guidelines entirely before using the product.

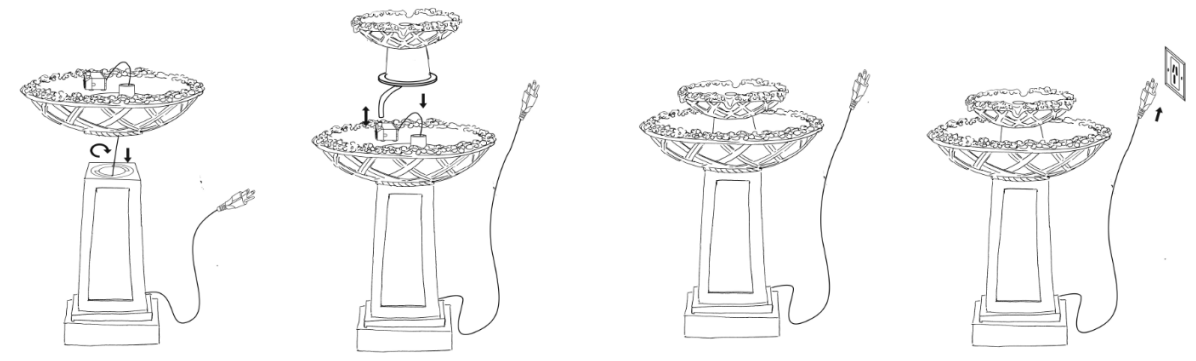
PRODUCT FEATURE: The product consists of: (1) First Basin; (2) Middle Basin; (3) Fountain Base, (4) Pump (Please read pump use manual);

INSTRUCTIONS FOR USE:

1. Unpack the contents of the box and check to make sure that all items are accounted for and in good condition
2. Familiarize yourself with the pump. The pump speed is controlled by the switch located at the front of the pump. The speed is indicated by plus (+) and minus (-) sign. To increase the speed, move to each speed level. At its highest speed level, the switch will cease to move any further, vice versa.
3. Select a flat, level surface for the assembly and final location of your fountain.
4. Lead the pump power cord out through the PVC tube in the middle basin and fountain base. Locate the middle basin tightly in the fountain base.
5. Connect the pump with the water supply tube from the first basin.
6. Add clean water into the base and the water level should be approx 30mm (1.18") lower than the edge of the basin. Make sure there are not things such as leaves that will clog the pump in the water, or it will affect the pumps work;
7. Plug 3-pin plug of the water pump into a properly grounded, grounding type receptacle. If installed properly, water will begin flowing, making a wonderful performance.

8, Check your fountain area on a regular basis to ensure that there is no leakage.

Note: On first use, there may be air in the pump. It may take several minutes until all of the air escapes and water begins to flow.



SAFETY GUIDELINES:

1. Read all instructions and safety guidelines thoroughly. Failure to follow guidelines and instructions could result in serious injury and / or property damage.
2. Do not pump flammable liquids such as gasoline / fuel oil with the fountain pump.
3. Make sure the water tube is properly connected with the pump. Do not crimp the tube as this could cause a blockage and water will not flow.
4. During operation, the pump will be submerged in water. Take care when handling the pump; do not pull it out of the water by the power cord, and do not move it when running and still submerged in water.
5. Unplug the pump from electric power before servicing, cleaning, or moving.

CLEANING AND MAINTENANCE:

1. If, after time, the pump starts to lose power or stops working, check for the buildup of sediment or scale in the Fountain Basin.
2. Remove the impediment or any dirt and scale.
3. Periodically change water and keep water clean. Distilled water is recommended to prevent mineral buildup. This will improve the waterfall effect.

These instructions relate ONLY to this water fountain product and contain important information for using the product the first time. Please keep for later reference. These instructions should always accompany the product in the event of transfer to a new user.