

LED Light Strip

User's Guide for Model IAT60 v2413-01



Features

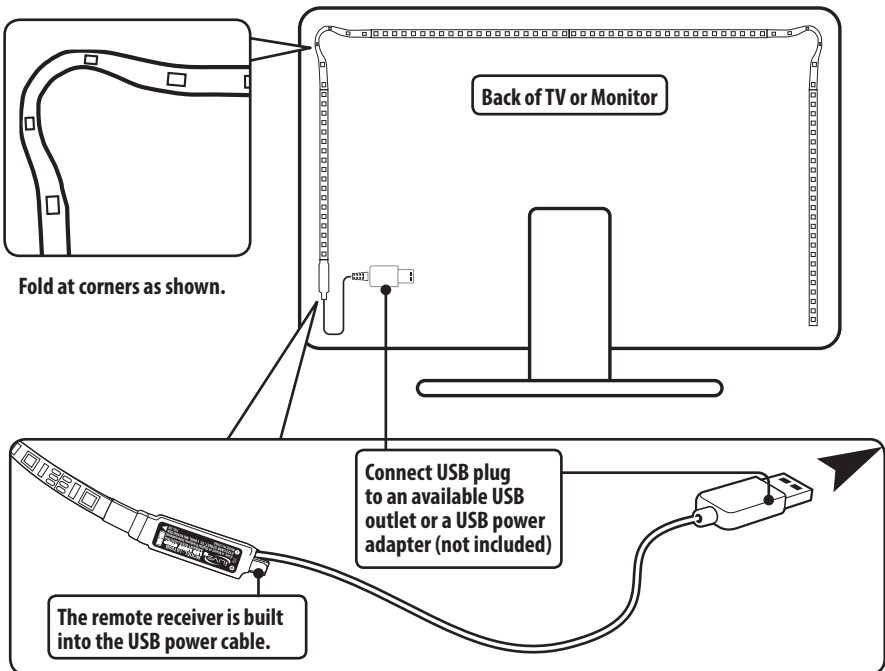
- Length: 6.5 ft/2M
- Width: .4 in/10mm
- 32 LEDs total (5050 RGB LED)
- 5V USB power input
- Self adhesive, double sided backing

Includes

- USB cable with built-in remote receiver
- Remote control with CR 2025 battery included

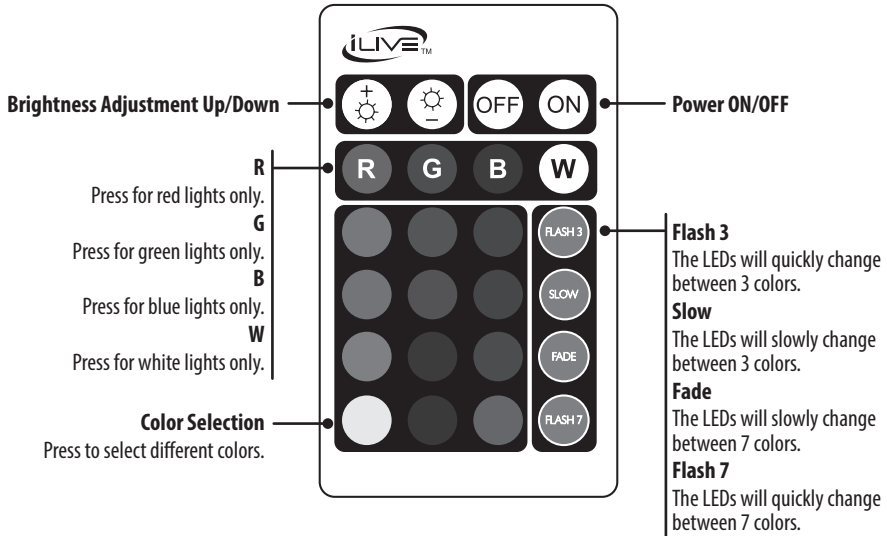
Installation

1. Clean the surface to which you're going to attach the light strip. The example shown below represents the back of a TV or computer monitor.
2. Peel the backing strip off the adhesive tape on the LED strip.
3. Press and hold the LED strip to the surface.
4. Connect the USB cable to a USB port on the TV or monitor, or a USB power adapter (not Included).
5. Use the remote to change LED color, brightness, and flash settings.

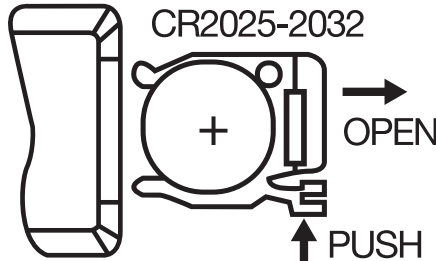


- The remote receiver does not need to be visible or have direct line of sight with the remote, and can be fully hidden behind your TV, monitor, etc.
- You may cut the strip to fit smaller areas. Using scissors, cut on the visible line between LEDs.

Remote Control



Remote Battery



Customer Support

Customer Service: 1-888-999-4215 | **Email Support:** prodinfo@dpiinc.com | **Email Parts:** partsinfo@dpiinc.com

For Warranty Information and the most up-to-date version of this User's Guide, go to www.iLiveElectronics.com

To download this User's Guide in English, Spanish, or French, or to get answers to frequently asked questions, visit the support section at: www.iLiveElectronics.com

Para descargar este Manual del Usuario en inglés, español y francés, o para obtener respuestas a preguntas frecuentes, visite la sección de apoyo en: www.iLiveElectronics.com

Pour télécharger ce guide de l'utilisateur en anglais, espagnol ou français, ou pour obtenir des réponses à des questions fréquemment posées, consultez la rubrique d'assistance sur: www.iLiveElectronics.com

Copyright © 2019 Digital Products International (DPI, Inc.) All other trademarks appearing herein are the property of their respective owners. Specifications are subject to change without notice.



Safety Warnings

- **WARNING:** To prevent fire or shock hazards, do not expose this unit to rain or moisture.
- **WARNING :** Where the mains plug or appliance coupler is used as the disconnect device, such disconnect device shall remain readily operable.
- Only use with the included power supply or a UL/ETL certified power supply of the same specifications.



WARNING: This product can expose you to chemicals including lead, which is known to the State of California to cause cancer and birth defects or other reproductive harm. For more information go to www.P65Warnings.ca.gov. **This product meets and complies with all Federal regulations.**