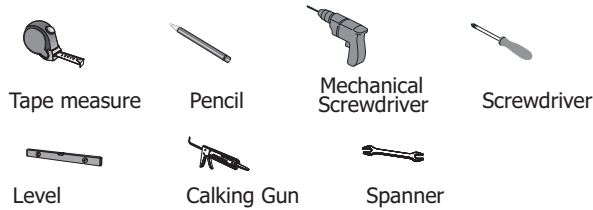
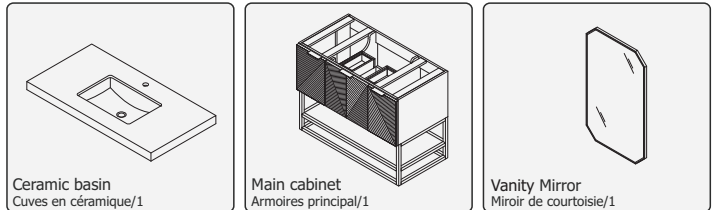


INSTALLING VANITY WITH TWO PEOPLE IS HIGHLY RECOMMENDED
L'INSTALLATION DE LA VANITÉ AVEC DEUX PERSONNES EST FORTEMENT RECOMMANDÉE

Recommended Tools/Outils recommandés

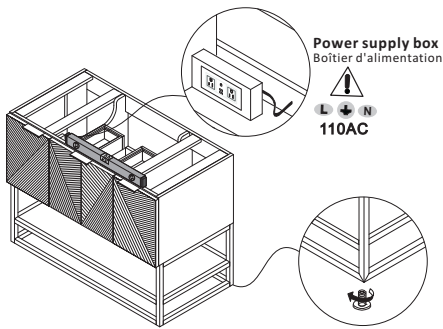


Main Body Parts/La partie principale du corps

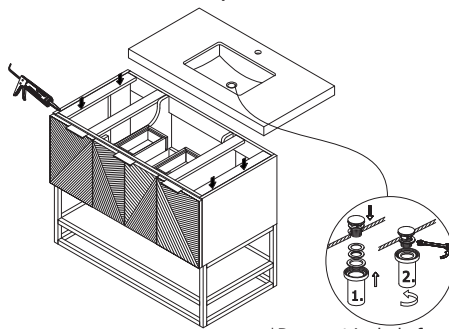


Assembly instructions/Instructions de montage

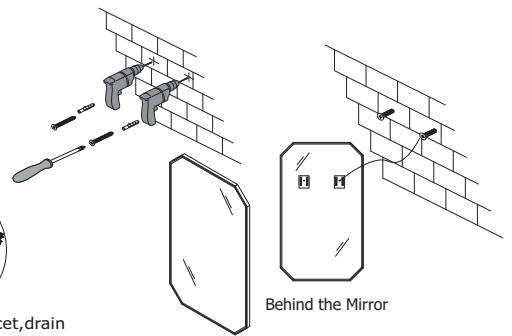
STEP #1
Adjusting cabinet foot/
 Pieds de cabinet de réglage



STEP #2
Paste the countertop/
 Coller le comptoir

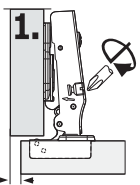


STEP #3
Hang the mirror/
 Accrocher le miroir

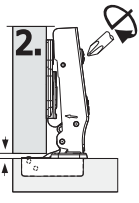


*Does not include faucet, drain assembly, or P-trap/Les robinets, les ensembles de drains ou les pièges à eau Le P - trap sont pas inclus.

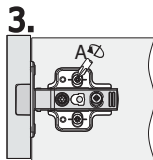
Installation, Removal and Adjustment of Hinges on Vanity



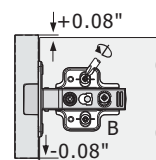
1. Side adjustment
 Ajustement du côté
 +0.08 -0.16



2. Adjustable cassette/Cassette réglable
 +0.11 -0.04
 Cassette/Cassette
 +0.11 -0.08

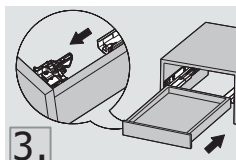
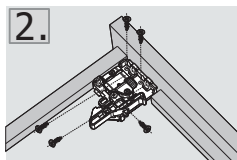
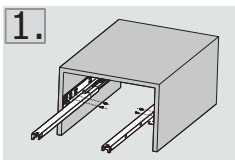


3. After adjustment, tighten A B
 Après le réglage, vous devez serrer A B

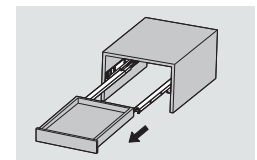
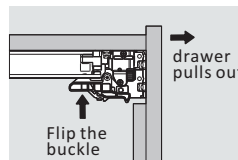


Loosen A B and adjust the height +0.08" -0.08"
 Desserrer A B, ajuster la hauteur +0.08" -0.08"

Installation Instruction/Instructions d'installation



Removal of slide rail with front connector
 Démontage de la glissière avec connecteur frontal



Flip the buckle of the front connector, then pull the drawer out to complete the disassembly
 Retournez la boucle du connecteur avant, puis tirez sortir le tiroir pour terminer le démontage

•Please check your product packaging to make sure the included accessories etc.
 Veuillez vérifier l'emballage de votre produit pour vous assurer que les accessoires inclus

