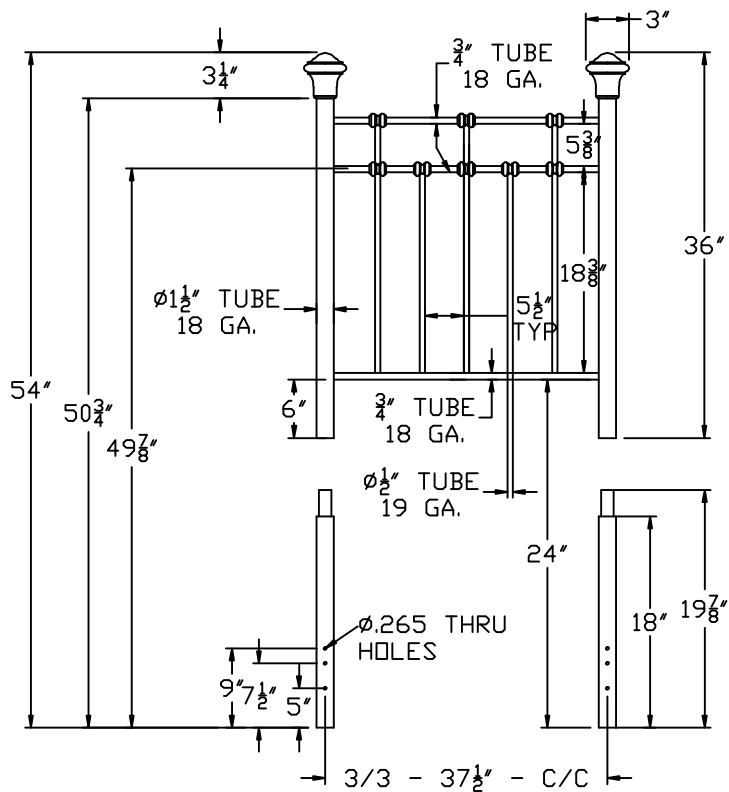


FINISH(S): HAMMERED BROWN
FINISH PROCESS: ONE STEP POWDER

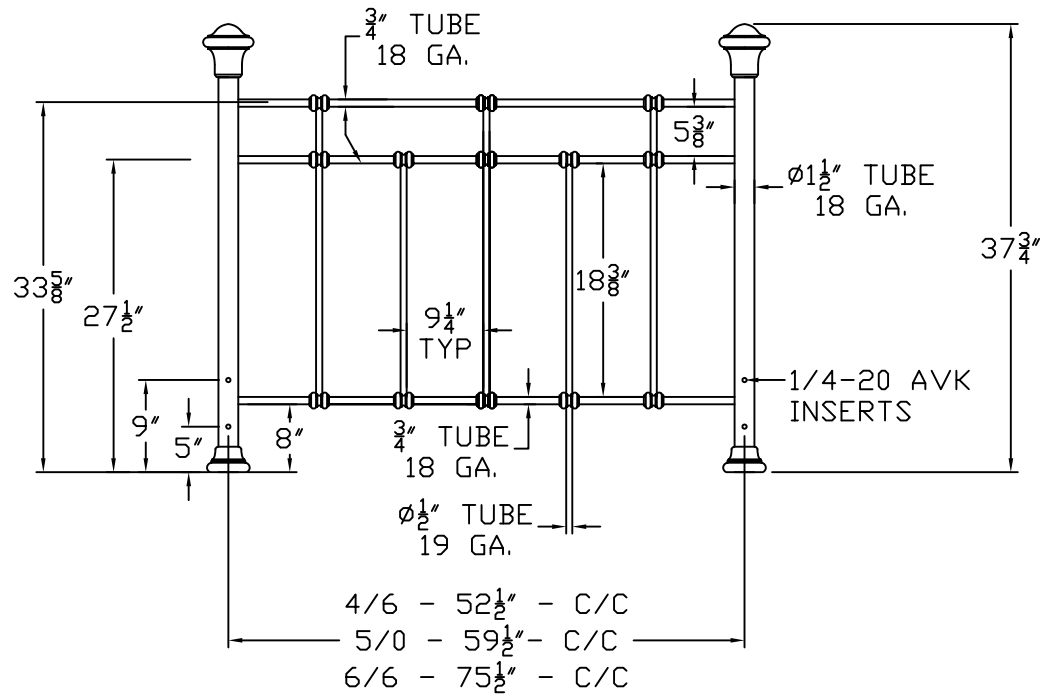


USE THIS AS REFERENCE ONLY

#	DESCRIPTION	
—	HARDWARE BAG #351501 BED (BLACK)	
—	(4) 1/4-20 2 1/4 COUNTERSUNK ALLEN HEAD SCREW	
—	(4) 1/4-20 1 FLAT ALLEN HEAD SCREW	
—	(8) 5/8" OD METAL WASHER	
—	(4) 1/4-20 HEX NUT	
—	ALLEN WRENCH	
—	—	
—	HARDWARE BAG #351502 HEADBOARD (BLACK)	
—	(4) 1/4-20 2 1/4 COUNTERSUNK ALLEN HEAD SCREW	
—	(4) 5/8" OD METAL WASHER	
—	(4) 1/4-20 HEX NUT	
—	ALLEN WRENCH	
—	—	
—	—	
—	PLASTIC GLIDE #150950000	
—	FINIAL #351503	
—	LEG EXT. #351604	
—	FOOT CASTING #351505	
—	—	
—	—	
—	—	
—	—	
—	—	
—	—	
ISU	DATE	REVISION
B	11-6-06	ADD CARTON INFORMATION
—	—	—
—	—	—
—	—	—

[illegible]

FINISH(S): HAMMERED BROWN
FINISH PROCESS: ONE STEP POWDER

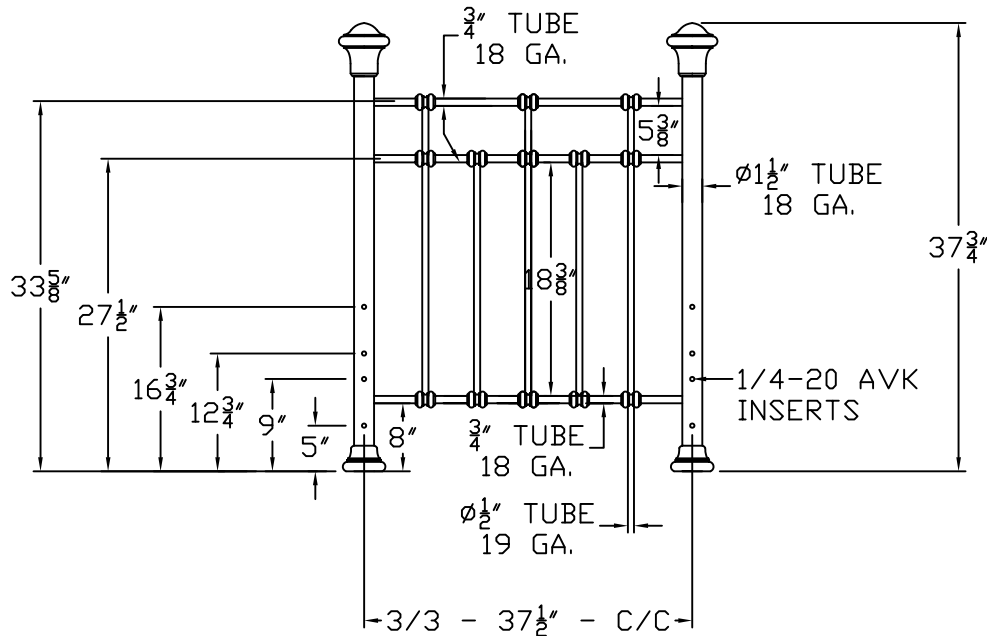


#	DESCRIPTION	
—	HARDWARE BAG #351501 BED (BLACK)	
—	(4) 1/4-20 2 1/4 COUNTERSUNK ALLEN HEAD SCREW	
—	(4) 1/4-20 1 FLAT ALLEN HEAD SCREW	
—	(8) 5/8" OD METAL WASHER	
—	(4) 1/4-20 HEX NUT	
—	ALLEN WRENCH	
—	—	
—	HARDWARE BAG #351502 HEADBOARD (BLACK)	
—	(4) 1/4-20 2 1/4 COUNTERSUNK ALLEN HEAD SCREW	
—	(4) 5/8" OD METAL WASHER	
—	(4) 1/4-20 HEX NUT	
—	ALLEN WRENCH	
—	—	
—	—	
—	PLASTIC GLIDE #150950000	
—	FINIAL #351503	
—	LEG EXT. #351504	
—	FOOT CASTING #351505	
—	—	
—	—	
—	—	
—	—	
—	—	
ISU	DATE	REVISION
B	7-24-06	ADD CARTON INFORMATION
C	11-5-06	ADD HB CARTON INFORMATION
—	—	—
—	—	—

USE THIS AS REFERENCE ONLY

[illegible]

FINISH(S): HAMMERED BROWN
FINISH PROCESS: ONE STEP POWDER

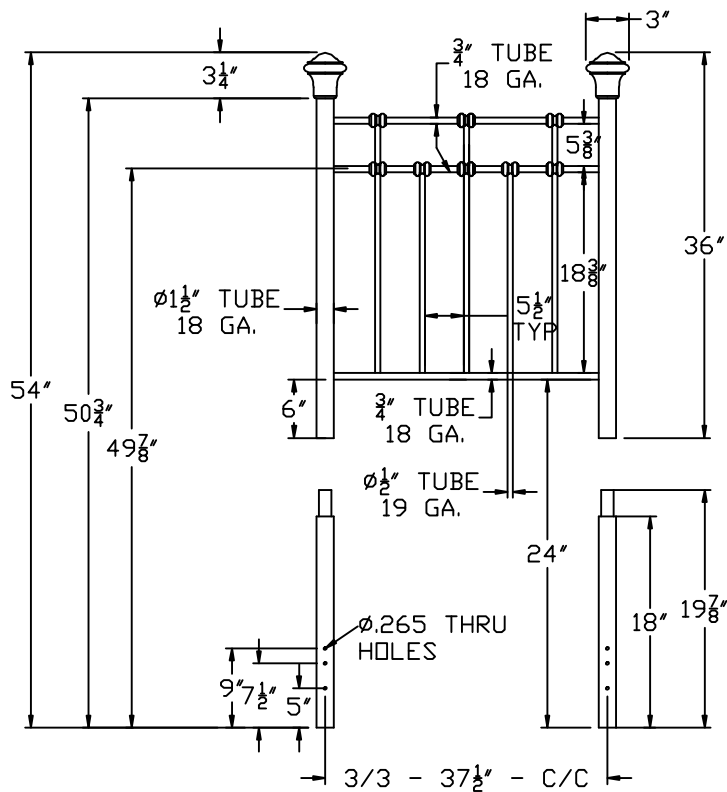


#	DESCRIPTION	
—	HARDWARE BAG #351501 BED (BLACK)	
—	(4) 1/4-20 2 1/4 COUNTERSUNK ALLEN HEAD SCREW	
—	(4) 1/4-20 1 FLAT ALLEN HEAD SCREW	
—	(8) 5/8" OD METAL WASHER	
—	(4) 1/4-20 HEX NUT	
—	ALLEN WRENCH	
—	—	
—	HARDWARE BAG #351502 HEADBOARD (BLACK)	
—	(4) 1/4-20 2 1/4 COUNTERSUNK ALLEN HEAD SCREW	
—	(4) 5/8" OD METAL WASHER	
—	(4) 1/4-20 HEX NUT	
—	ALLEN WRENCH	
—	—	
—	—	
—	PLASTIC GLIDE #150950000	
—	FINIAL #351503	
—	LEG EXT. #351604	
—	FOOT CASTING #351505	
—	—	
—	—	
—	—	
—	—	
—	—	
ISU	DATE	REVISION
B	11-6-06	ADD CARTON INFORMATION
—	—	—
—	—	—
—	—	—

USE THIS AS REFERENCE ONLY

[illegible]

FINISH(S): HAMMERED BROWN
FINISH PROCESS: ONE STEP POWDER

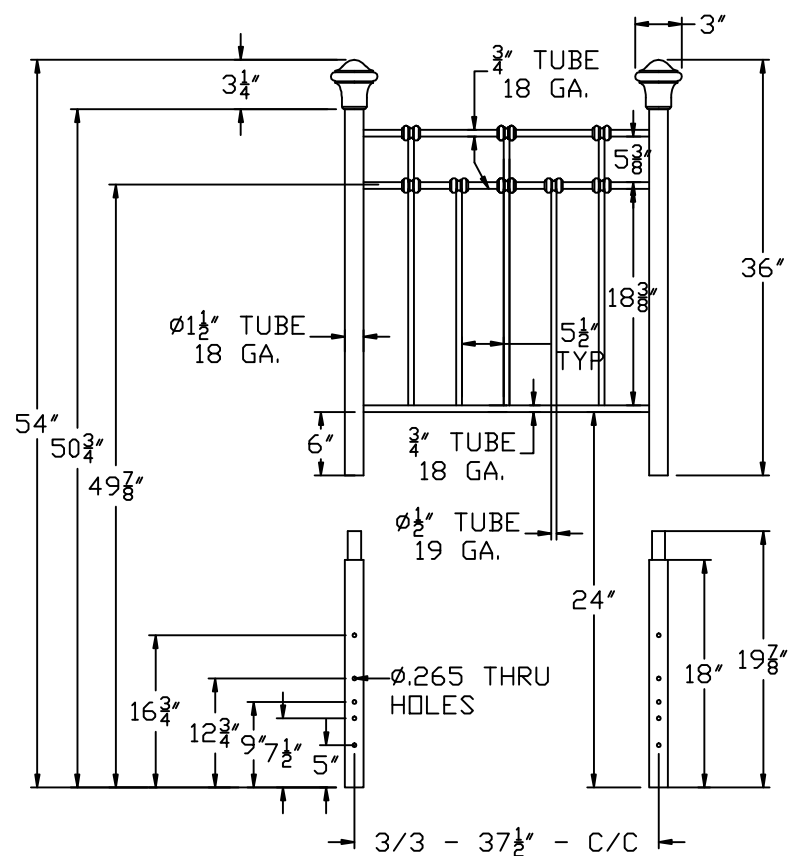


USE THIS AS REFERENCE ONLY

#	DESCRIPTION	
—	HARDWARE BAG #351501 BED (BLACK)	
—	(4) 1/4-20 2 1/4 COUNTERSUNK ALLEN HEAD SCREW	
—	(4) 1/4-20 1 FLAT ALLEN HEAD SCREW	
—	(8) 5/8" OD METAL WASHER	
—	(4) 1/4-20 HEX NUT	
—	ALLEN WRENCH	
—	—	
—	HARDWARE BAG #351502 HEADBOARD (BLACK)	
—	(4) 1/4-20 2 1/4 COUNTERSUNK ALLEN HEAD SCREW	
—	(4) 5/8" OD METAL WASHER	
—	(4) 1/4-20 HEX NUT	
—	ALLEN WRENCH	
—	—	
—	—	
—	PLASTIC GLIDE #150950000	
—	FINIAL #351503	
—	LEG EXT. #351604	
—	FOOT CASTING #351505	
—	—	
—	—	
—	—	
—	—	
—	—	
—	—	
ISU	DATE	REVISION
B	11-6-06	ADD CARTON INFORMATION
—	—	—
—	—	—
—	—	—

[illegible]

FINISH(S): HAMMERED BROWN
FINISH PROCESS: ONE STEP POWDER



USE THIS AS REFERENCE ONLY

#	DESCRIPTION	
—	HARDWARE BAG #351501 BED (BLACK)	
—	(4) 1/4-20 2 1/4 COUNTERSUNK ALLEN HEAD SCREW	
—	(4) 1/4-20 1 FLAT ALLEN HEAD SCREW	
—	(8) 5/8" OD METAL WASHER	
—	(4) 1/4-20 HEX NUT	
—	ALLEN WRENCH	
—	—	
—	HARDWARE BAG #351502 HEADBOARD (BLACK)	
—	(4) 1/4-20 2 1/4 COUNTERSUNK ALLEN HEAD SCREW	
—	(4) 5/8" OD METAL WASHER	
—	(4) 1/4-20 HEX NUT	
—	ALLEN WRENCH	
—	—	
—	—	
—	PLASTIC GLIDE #150950000	
—	FINIAL #351503	
—	LEG EXT. #351604	
—	FOOT CASTING #351505	
—	—	
—	—	
—	—	
—	—	
—	—	
ISU	DATE	REVISION
B	11-6-06	ADD CARTON INFORMATION
—	—	—
—	—	—
—	—	—

[illegible]