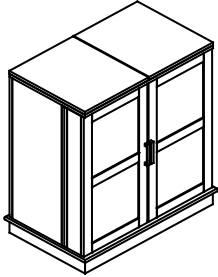


Assembly Instruction

GRAYSTONE EXPANDABLE BAR

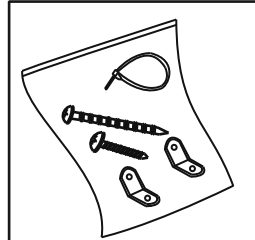
WARNING: Furniture tipping can create a significant hazard in the home. It is strongly recommended that case goods over 30" be secured with an anti-tip device, especially where children are concerned. This product comes with an anti-tip strap that can be easily installed in minutes. The use of anti-tip restraints may only reduce, but not eliminate, the risk of tip-over and is not a substitute for close parental supervision. Contact place of purchase if anti-tip device is missing from package.

PARTS LIST

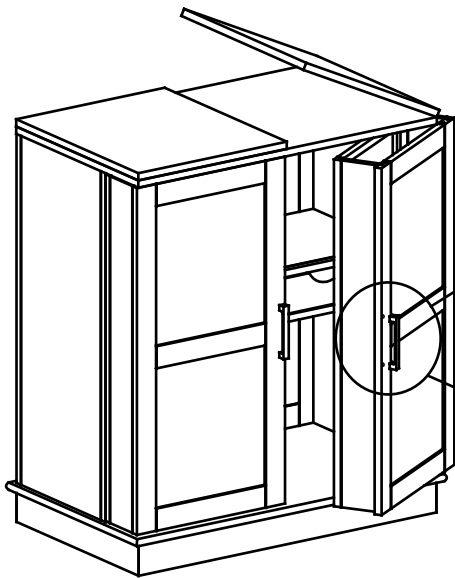


RUM POINTE EXPANDABLE BAR

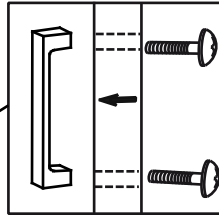
HARDWARE PART



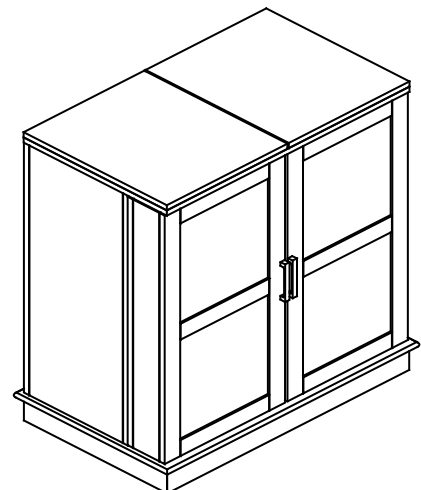
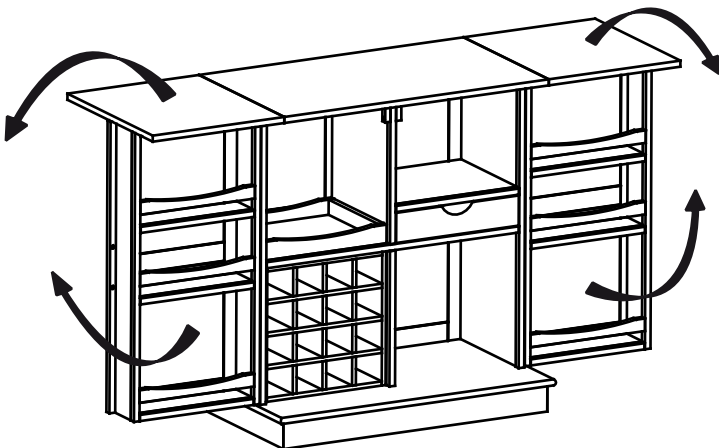
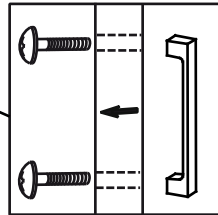
Anti-tip Device



1.Remove the handle located at the book of door.



2.Attach the handle in front of the door.



COMPLETE VIEW