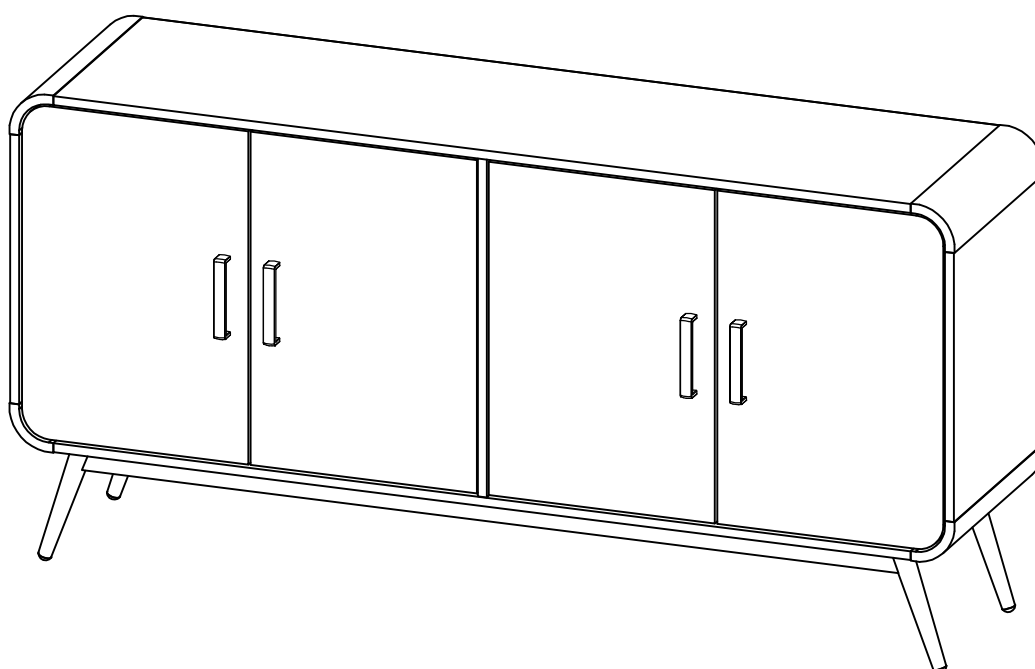


Sideboard cabinet



ASSEMBLY INSTRUCTIONS



60 min. assembly
2 person


*The estimated assembly time may vary depending on the individual.

Hey, there

Now is assembly time!

Deeeeeeep breathe.... and again....
Tools ready,
Easy peasy!

Estimated

 **60** min. assembly
2 person

Tools Required

- Allen Key (included)
- Screw Driver (not included)
- Hammer (not included)

important: Cautious when you use power tools

Thank you fro purchasing this LuxenHome product.
This product has been manufactured with the highest standards of safety and quality.

PLEASE READ ALL INSTRUCTIONS CAREFULLY BEFORE ASSEMBLY.

Unpack all parts from the packaging inside the carton to ensure there are no missing or damaged parts. Lay out all the product parts on a clean, flat, and soft surface to prevent scratches. Refer to the steps provided as assembling guide.

Do not attempt to assemble or use the product if any parts are missing or damaged.

REMINDERS

SAFE USAGE IS KEY

Your sell-being is our top priority when you use our product. Please prioritize your safety by diligently following the assembly guidelines and inspecting the product carefully both when it arrives and before each use.

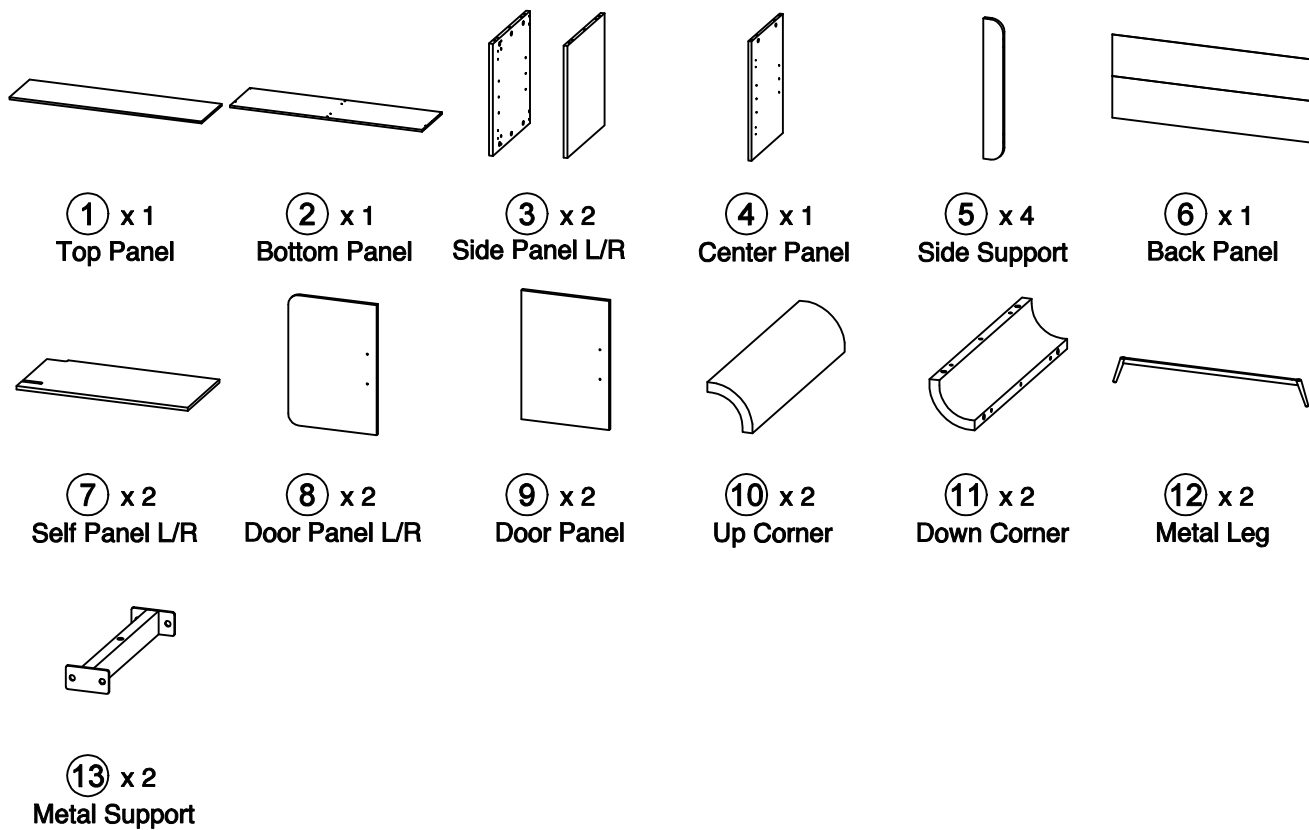
Please be aware that LuxenHome and Winsome House, Inc. cannot be held liable for any injuries or fatalities that occur due to not adhering to the provided instruction or misuse of the product.

DO NOT MODIFY

Our products undergo rigorous testing to ensure they meet established safety standards before being released for sale. Altering the product in any way can lead to serous safety concerns, for which LuxenHome cannot assume responsibility.

What's in the box

Parts

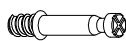


What's in the box

Hardware & accessory



(A1)



(A2)



(A3)

(A) x 42 SETS + 4



(B) x 28 + 3
M8 x 30mm



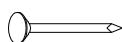
(C) x 2
M6 x 50mm



(D) x 1



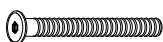
(E) x 48 + 4
M3.5 x 16mm



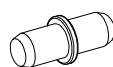
(F) x 24 + 3



(G) x 8 + 2
M6 x 15mm



(H) x 8
M6 x 50mm



(I) x 8 + 2



(J) x 8



(K) x 4



(L) x 8 + 2
M4 x 25mm



(M1)



(M2)



(M3)



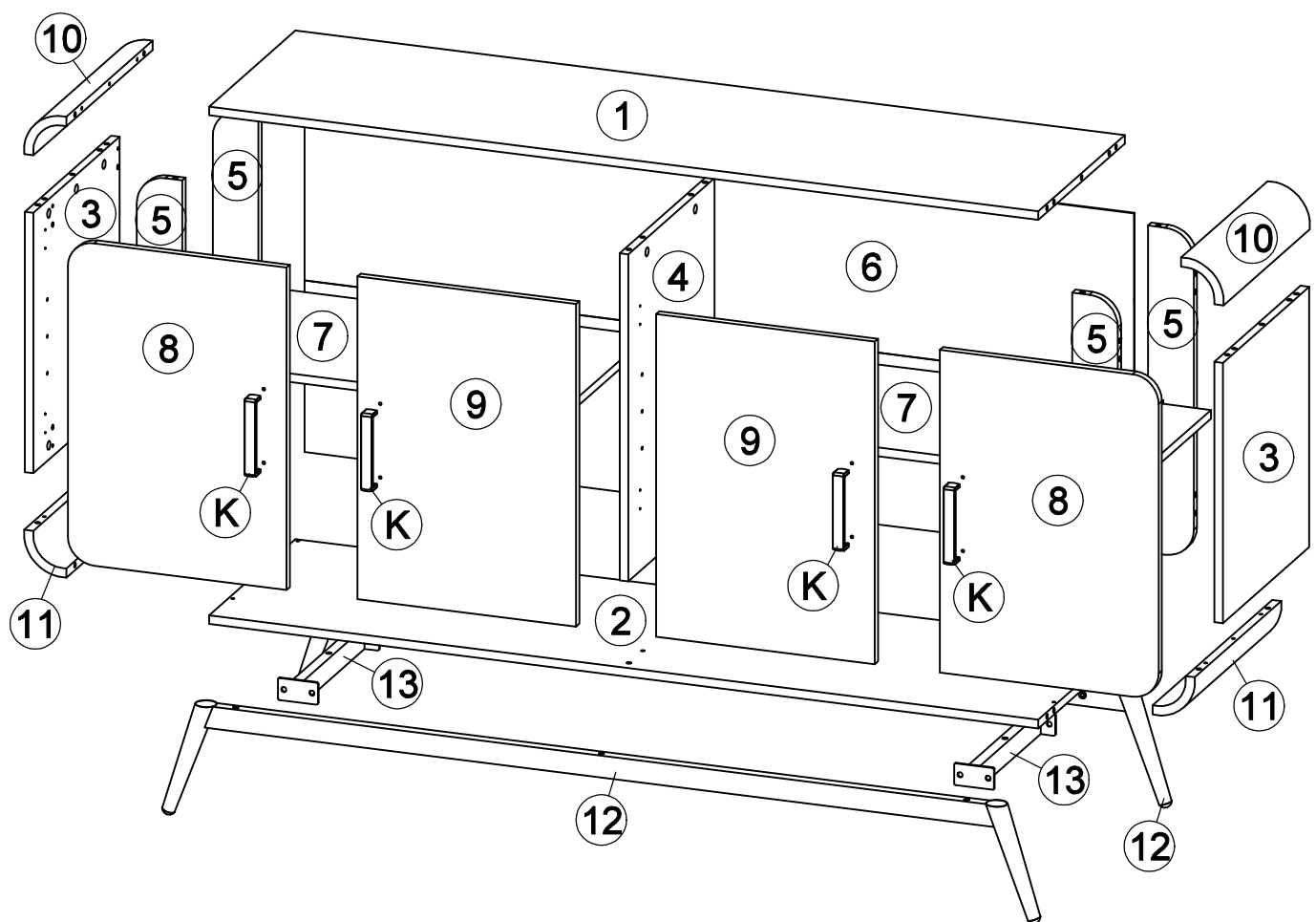
(M4)



(M5)


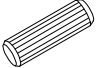
(M) x 2 Sets

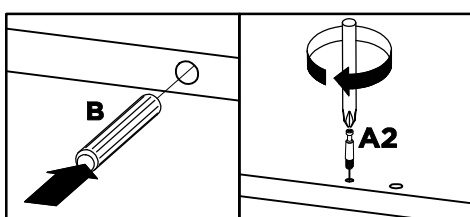
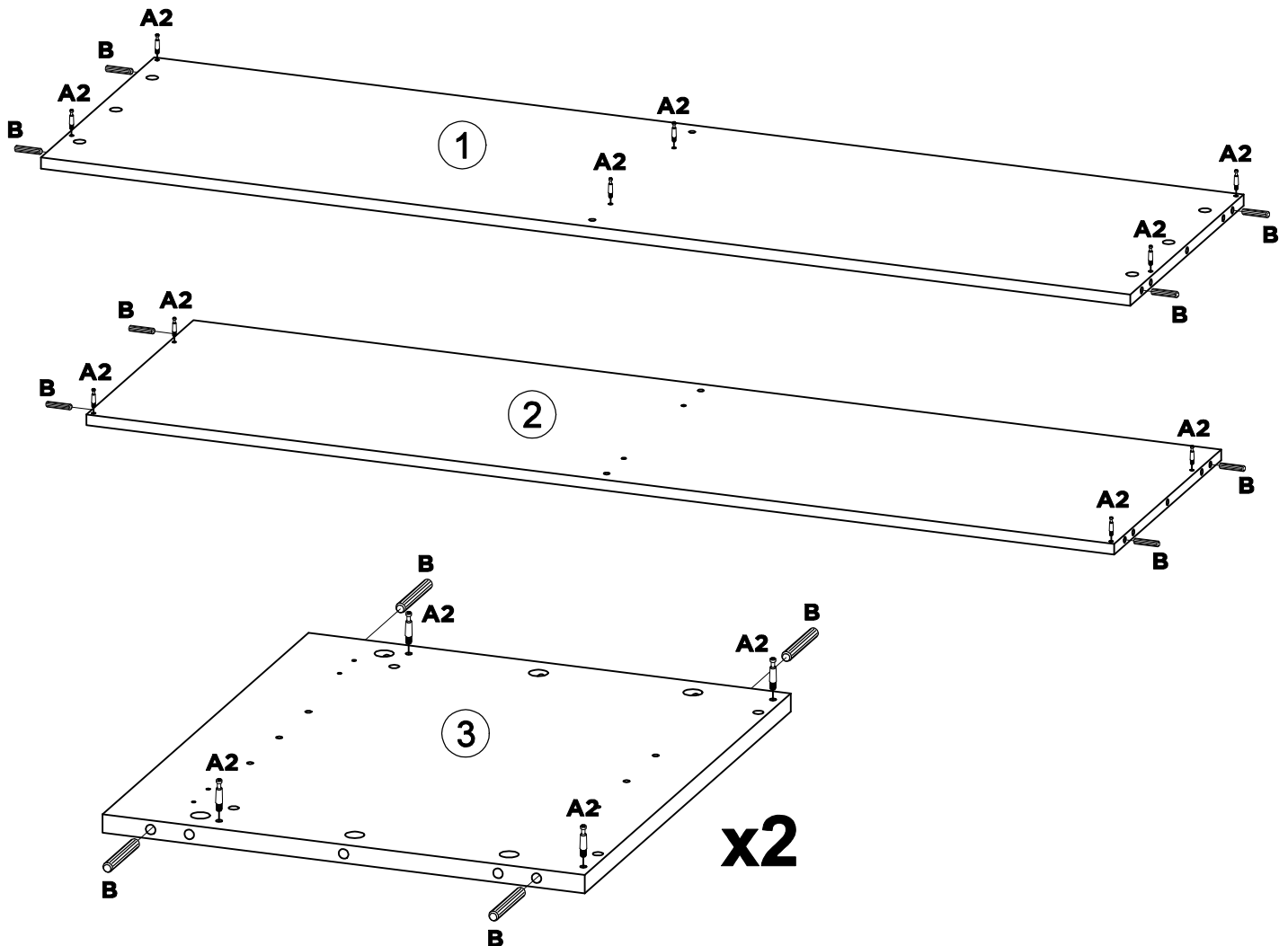
Assembly



Step 1

- Install and tighten hardware A2 until the shoulder is flush with panels 1, 2 and 3.
- Insert hardware B to panels 1, 2 and 3.

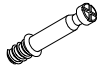
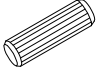
(A2) x 18	(B) x 16
	
	M8 x 30mm

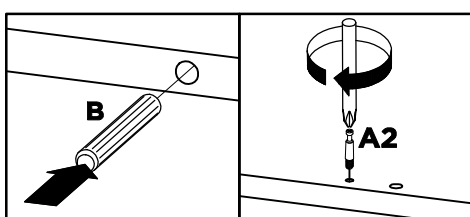
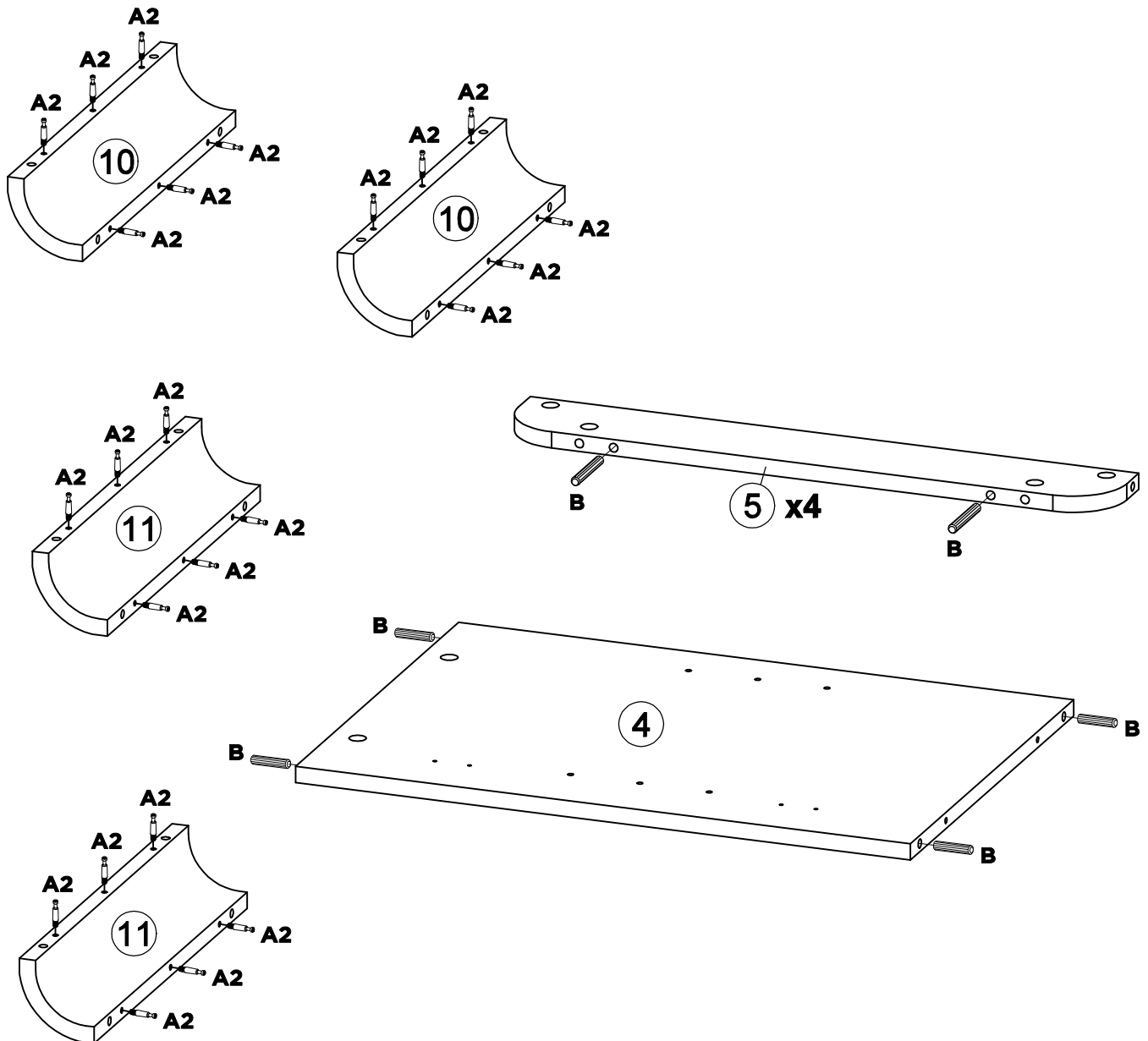


Step 2

-Install and tighten hardware A2 until the shoulder is flush with panels 10 and 11.



-Insert hardware B to panels 4 and 5.

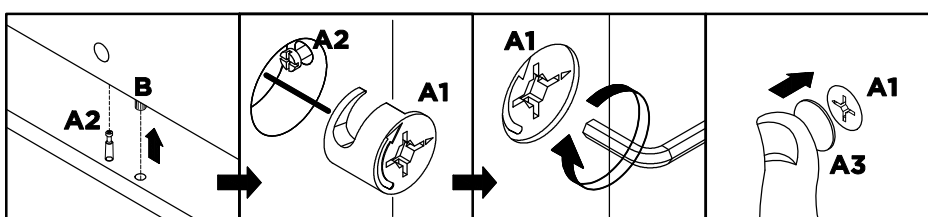
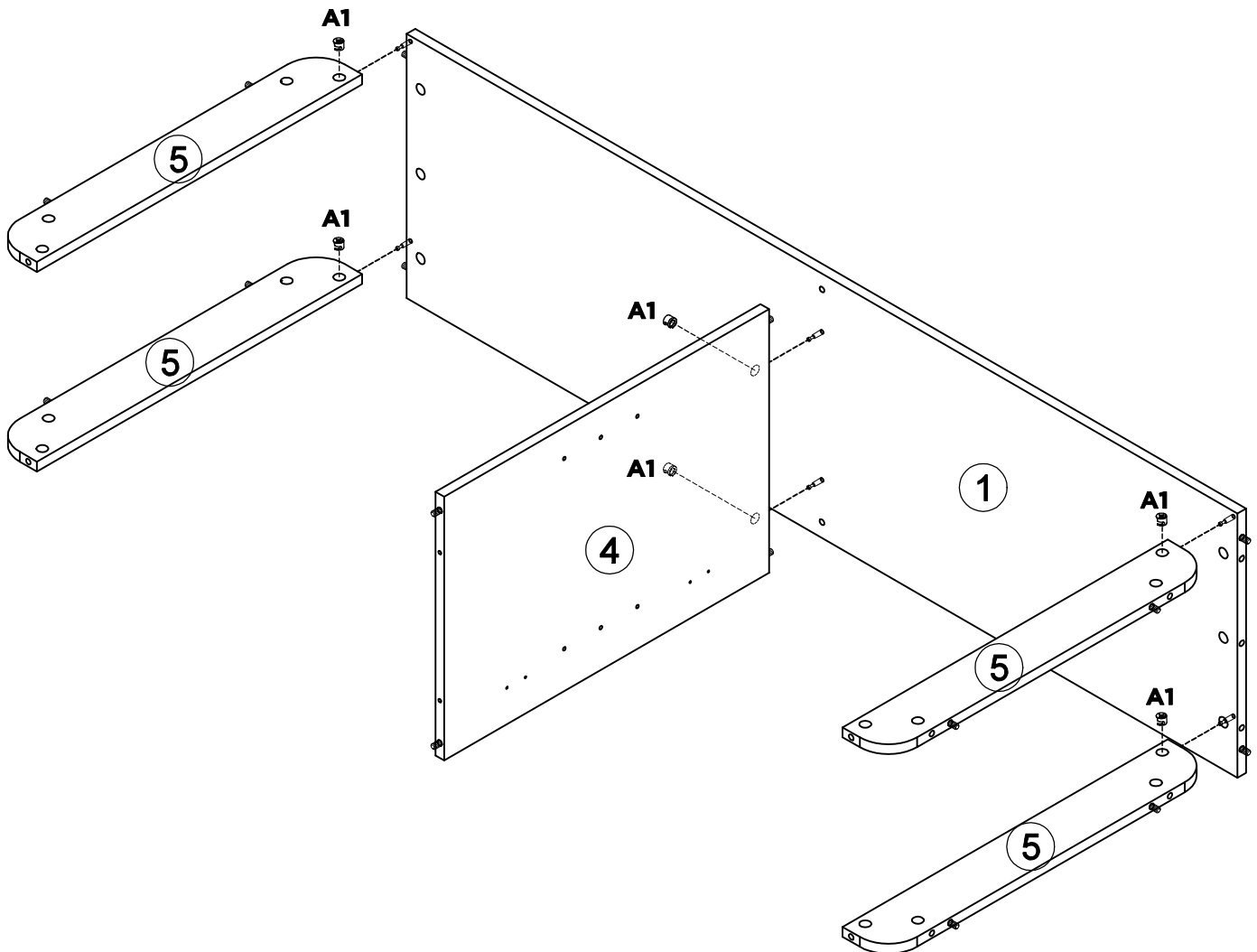
(A2) x 24	(B) x 12
	
	M8 x 30mm



Step 3



- Connect panel 4 and 5 to panel 1 by using hardware A1.
- Attach hardware A3 on top of hardware A1.

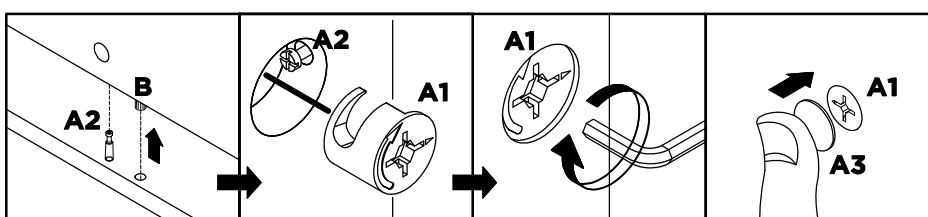
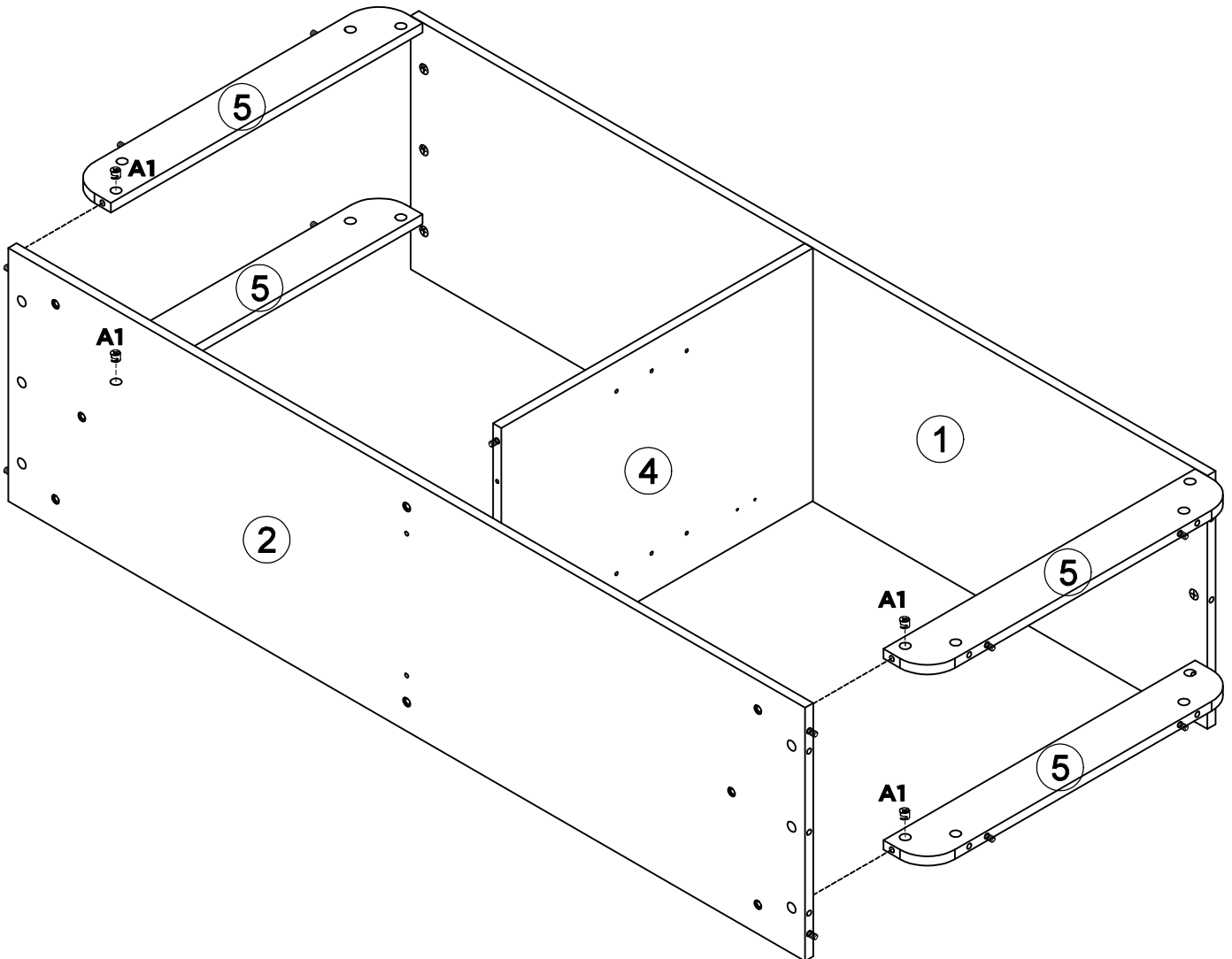
A1 x 6	A3 x 6
	



Step 4

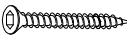

- Connect panel 4 and 5 to panel 2 by using hardware A1.
- Attach hardware A3 on top of hardware A1.

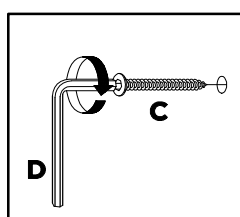
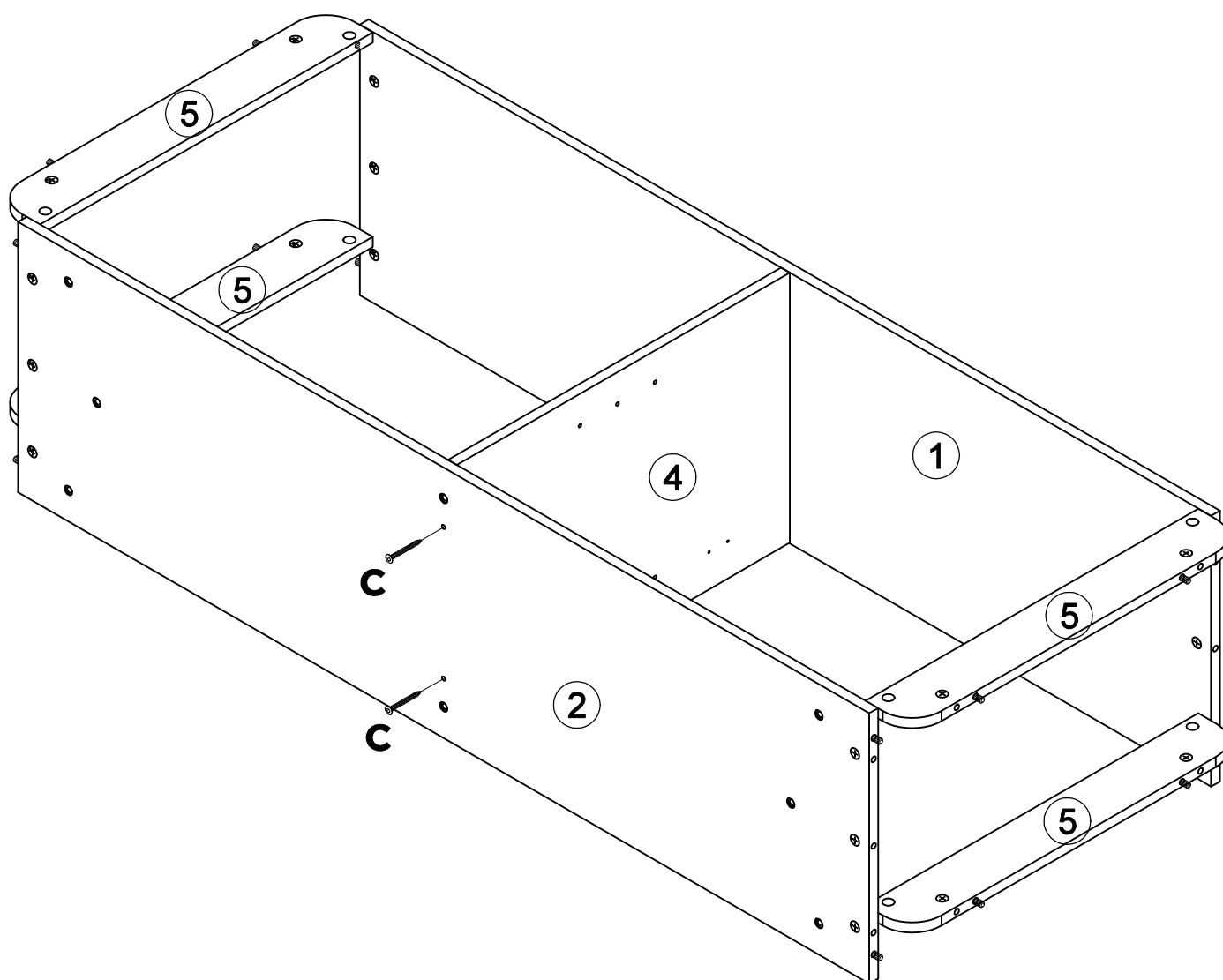
(A1) x 4	(A3) x 4
	



Step 5



-Connect panel 2 to panel 4 by using hardware C and D.

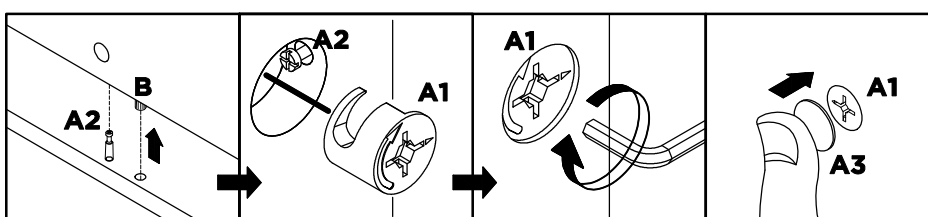
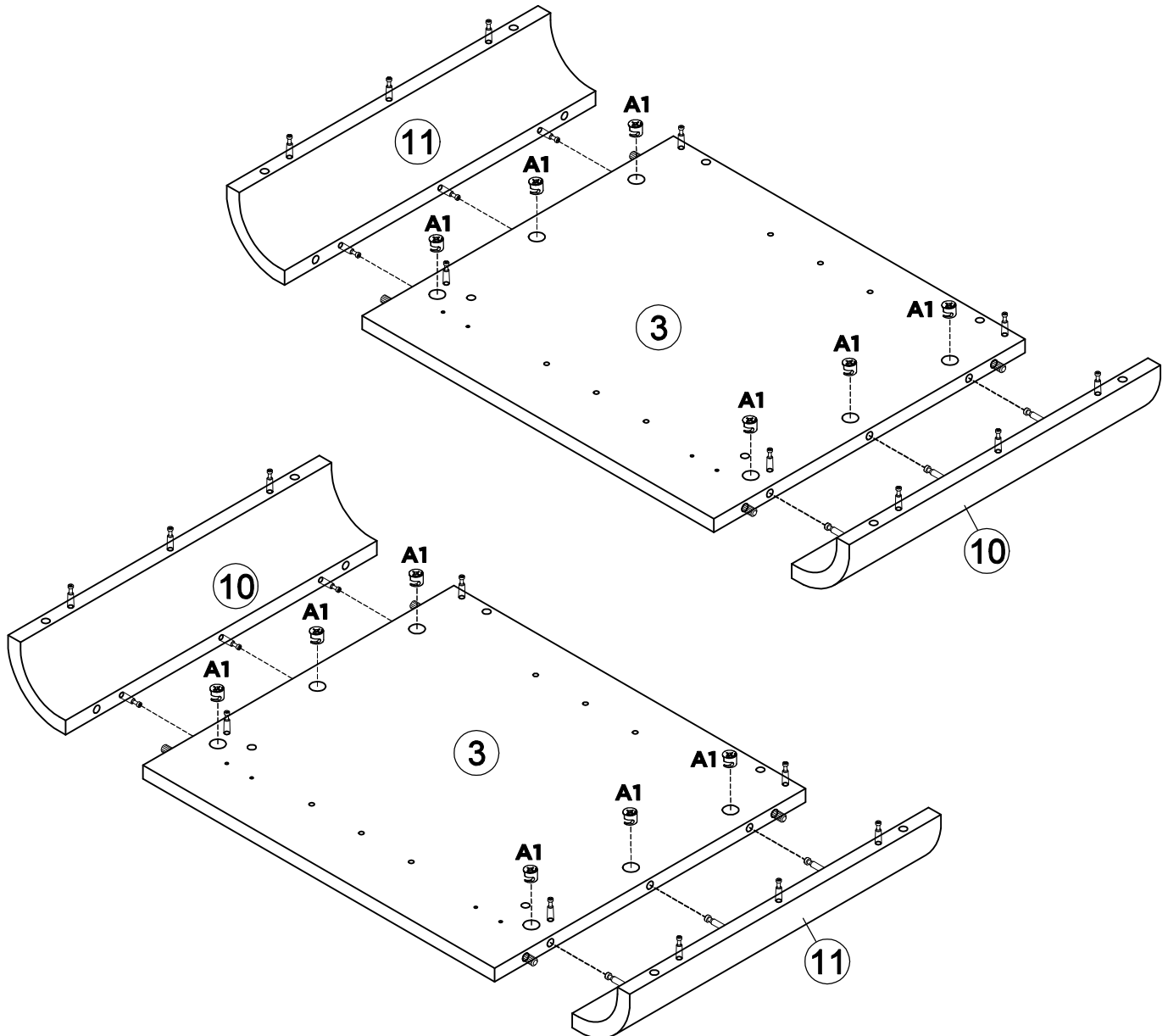
C x 2	D x 1
	
M6 x 50mm	



Step 6



- Connect panel 10 and 11 to panel 3 by using hardware A1.
- Attach hardware A3 on top of hardware A1.

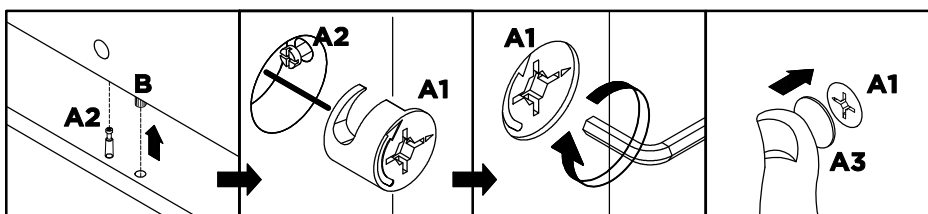
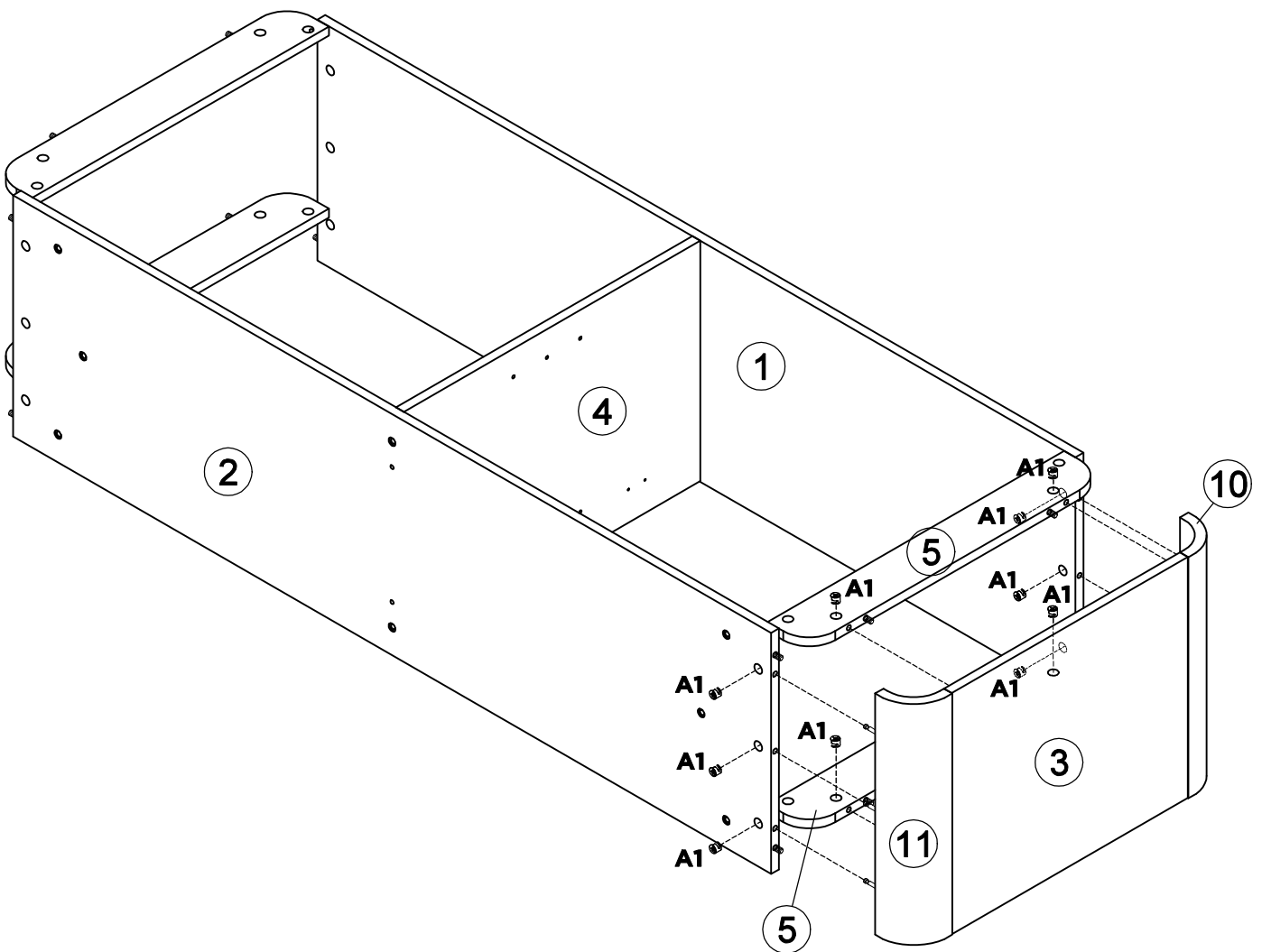
A1 x 12	A3 x 12
	



Step 7



- Connect panel 3, 10 and 11 to panel 1, 2 and 5 by using hardware A1.
- Attach hardware A3 on top of hardware A1.

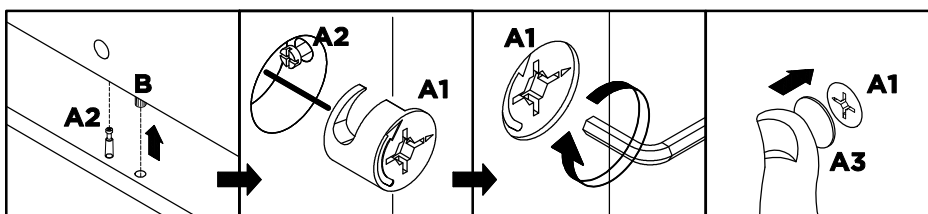
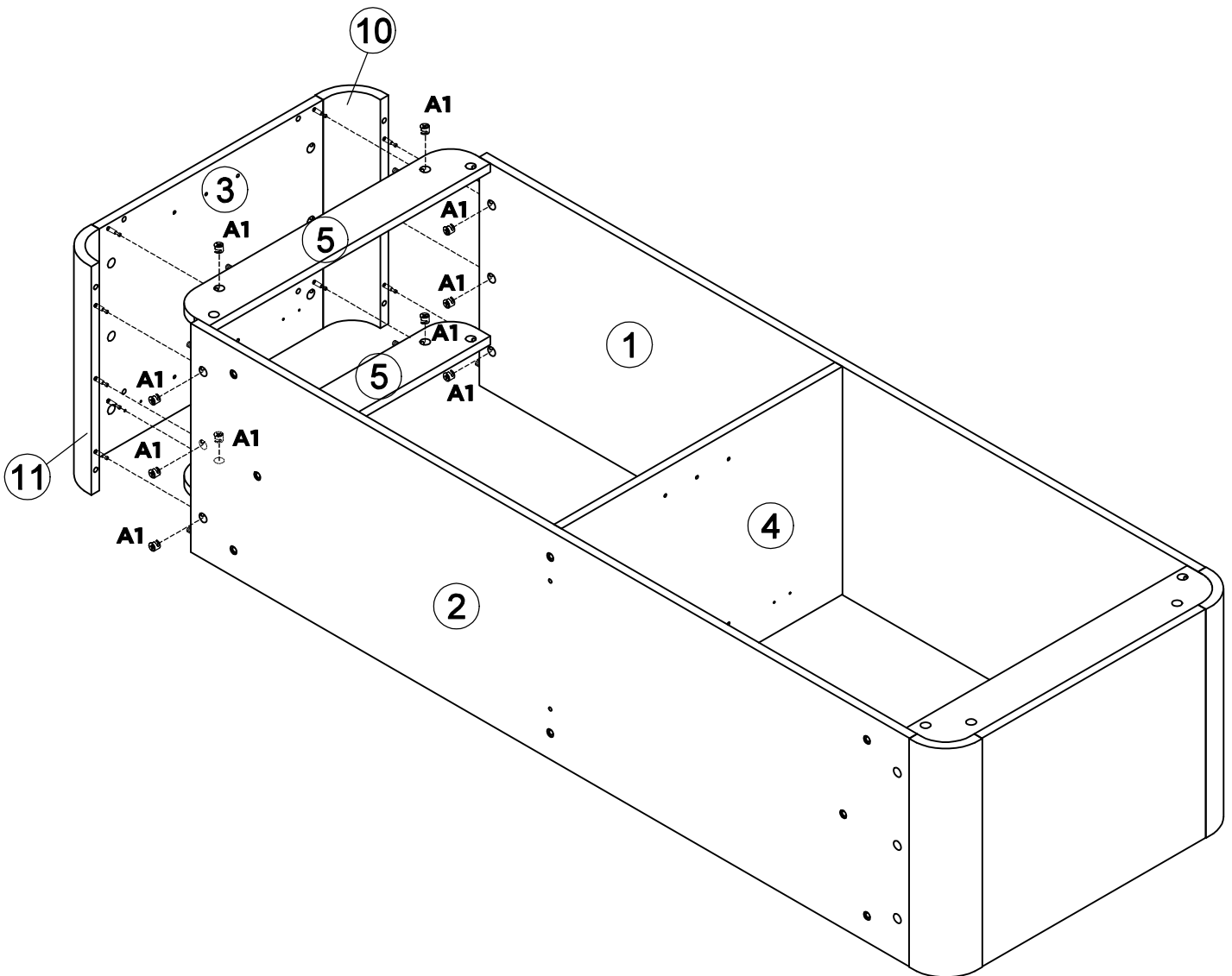
A1 x 10	A3 x 10
	



Step 8

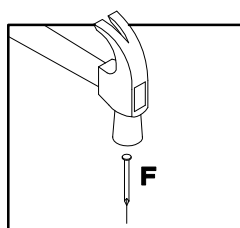
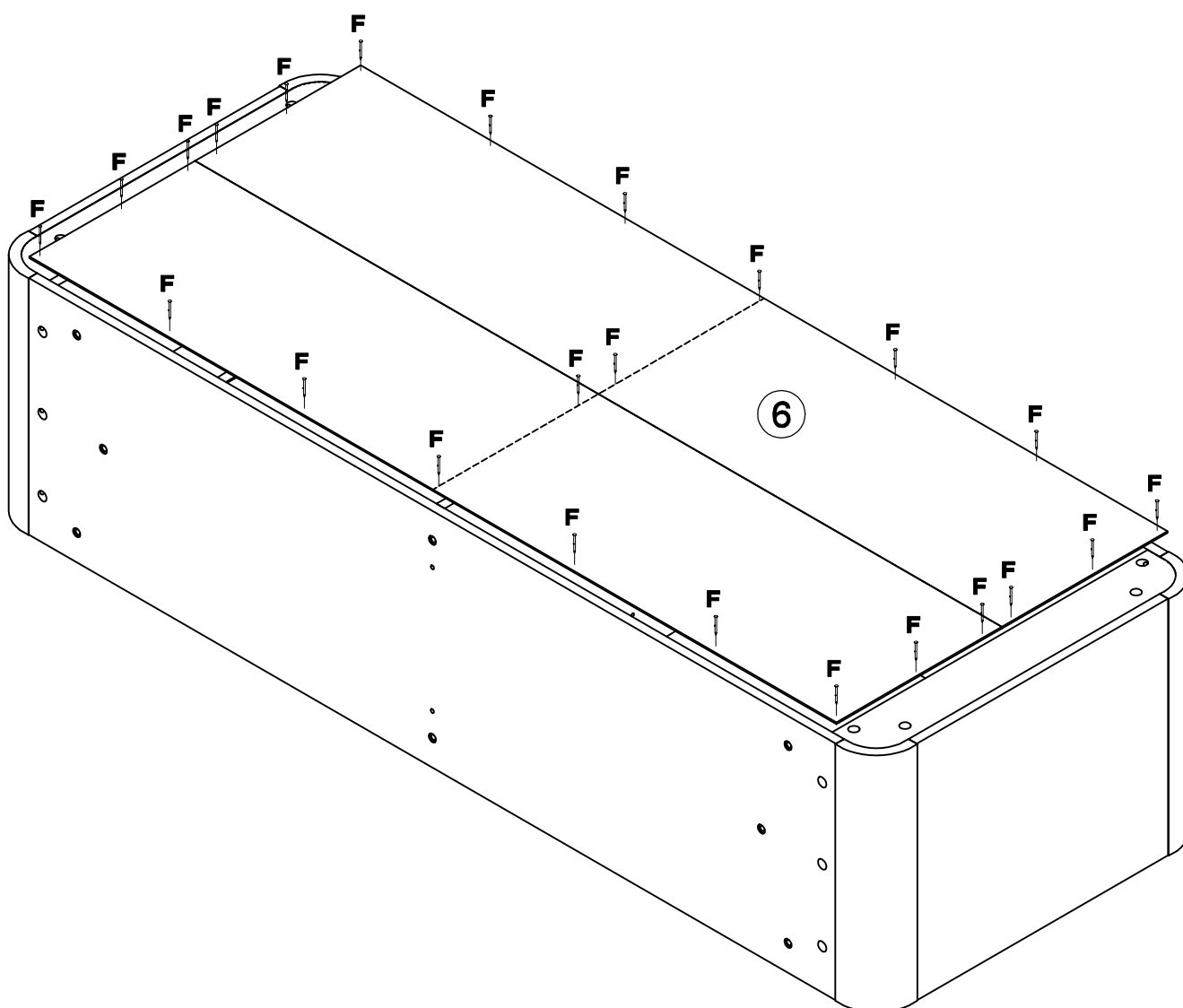
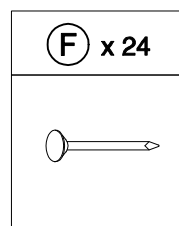
- Connect panel 3, 10 and 11 to panel 1, 2 and 5 by using hardware A1.
- Attach hardware A3 on top of hardware A1.

A1 x 10	A3 x 10
	



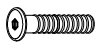

Step 9

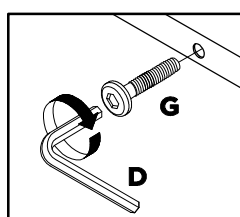
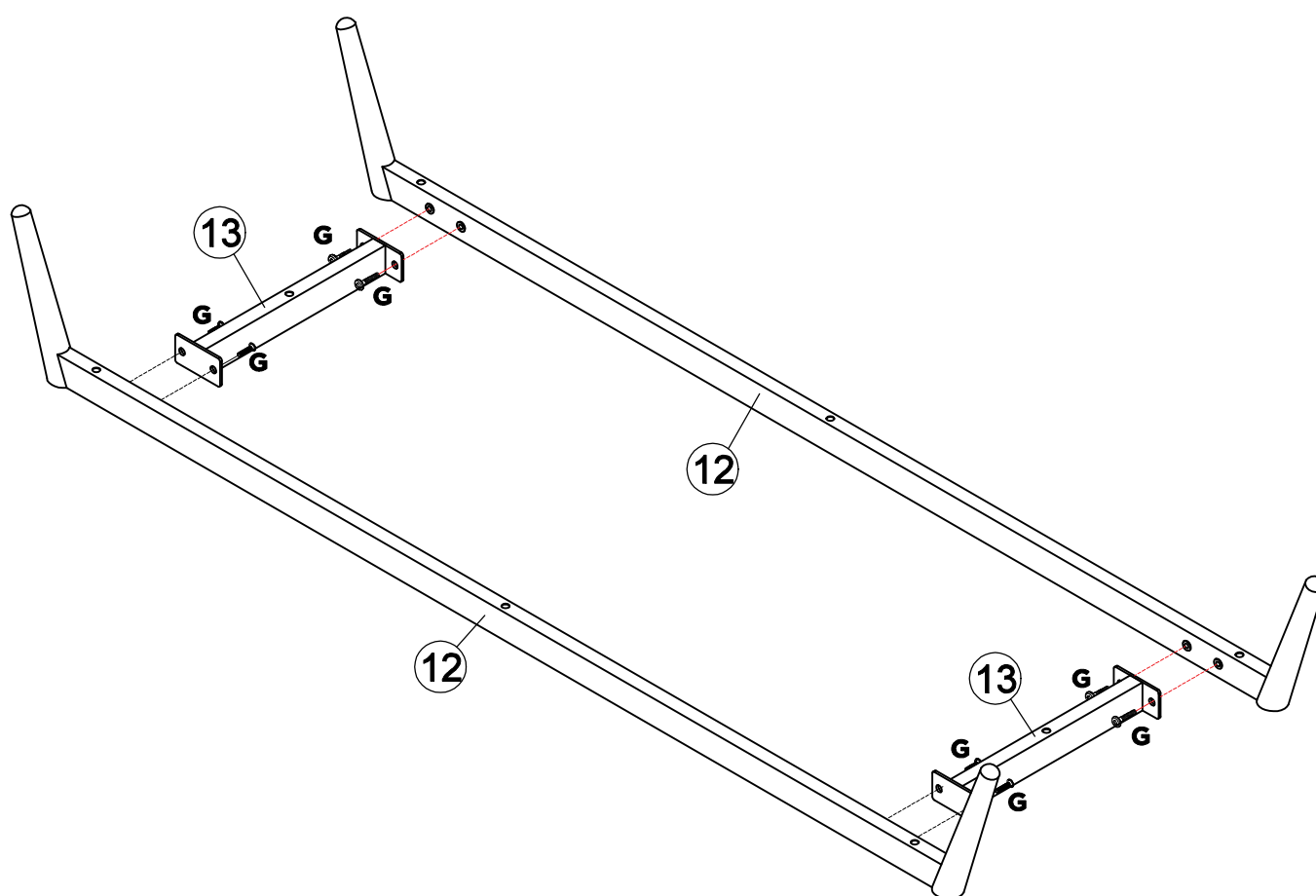
-Assemble parts 6 to entire body with hardware F.



Step 10

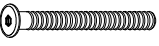

-Connect item 12 to item 13 by using hardware G.

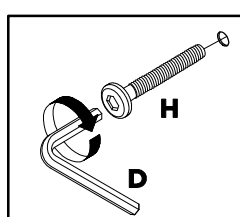
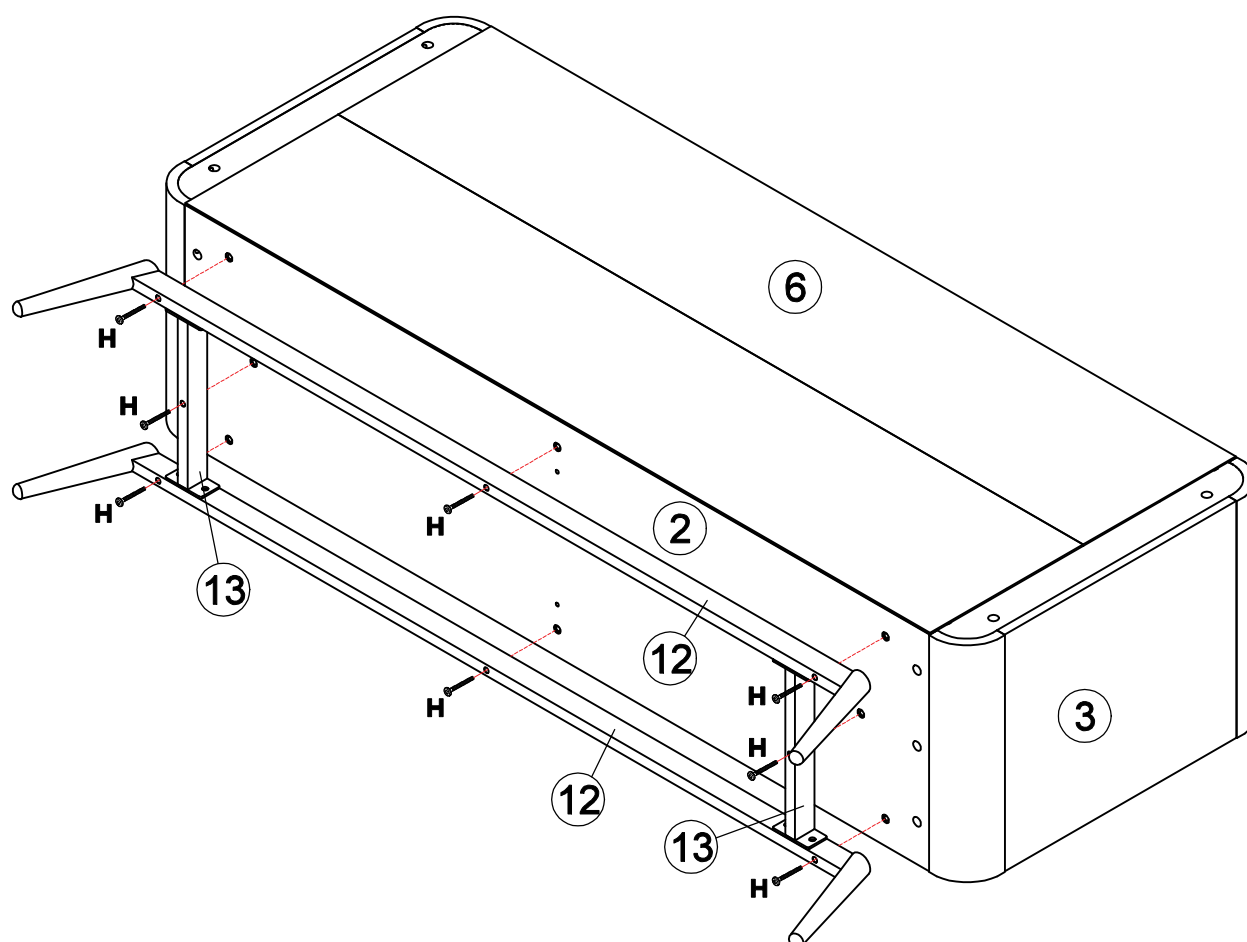
G x 8	D x 1
 M6 x 15mm	



Step 11

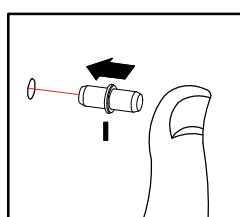
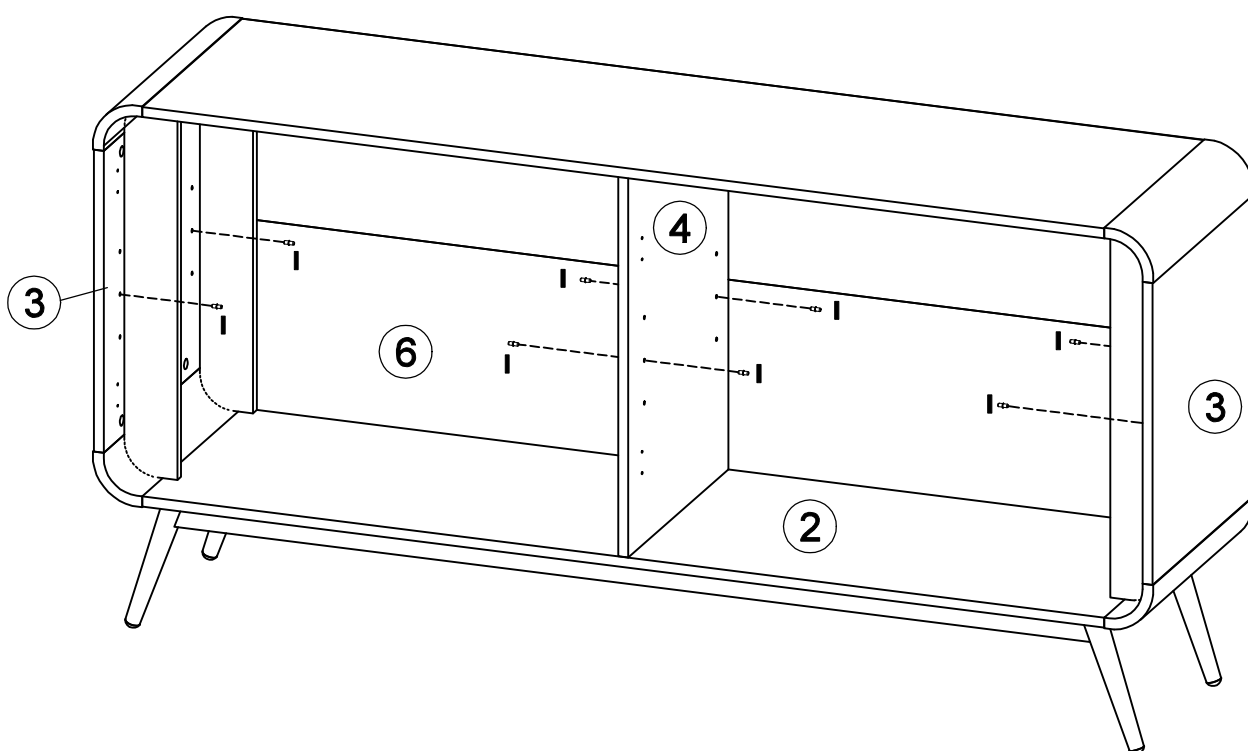
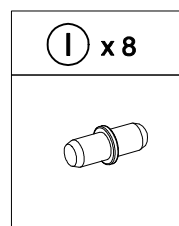
-Connect panel 12 and 13 to panel 2 by using hardware H.

(H) x 8	(D) x 1
	
M6 x 50mm	



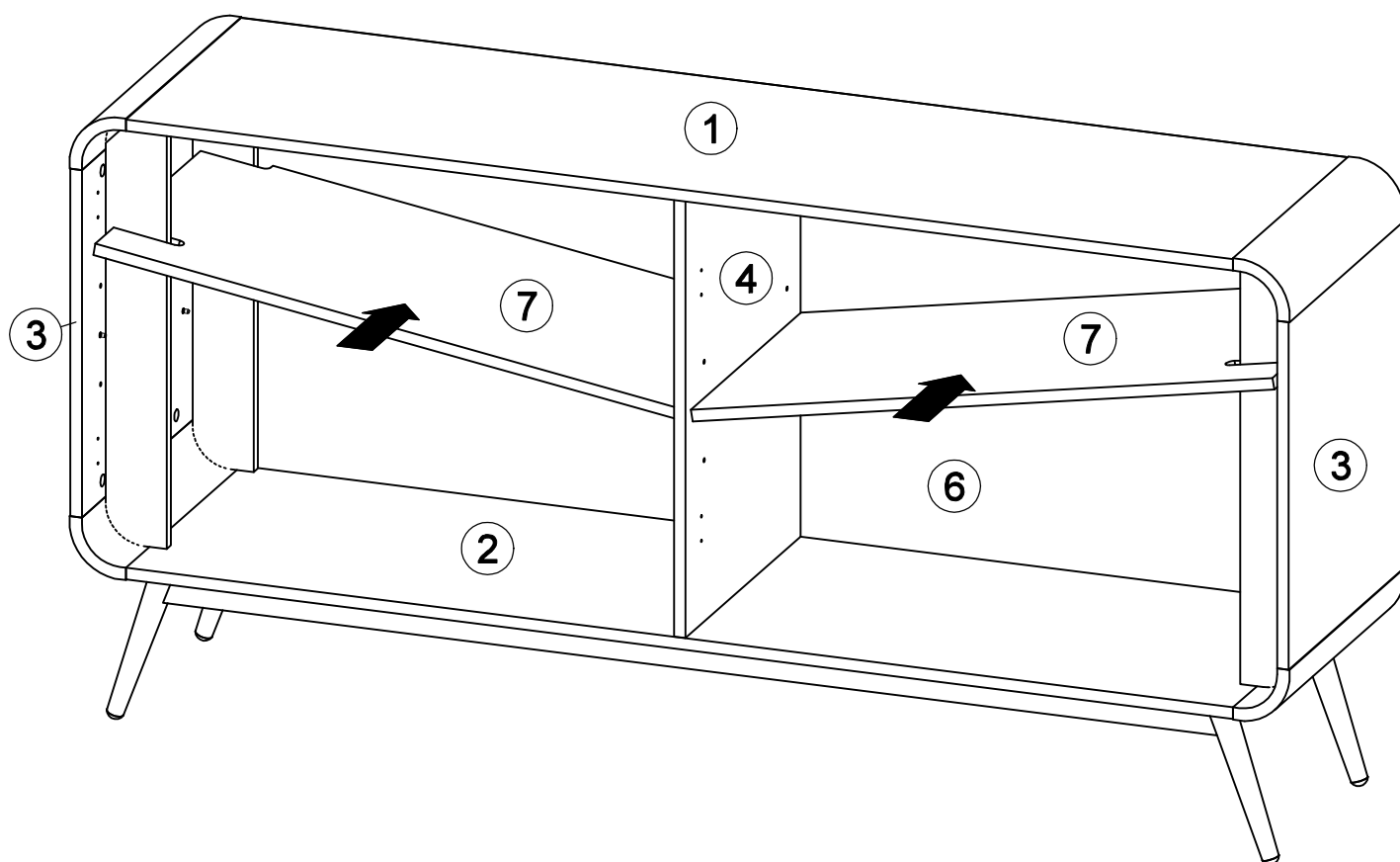
Step 12

-Insert hardware I into mounting positions on panel 3 and 4 by hand.



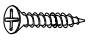
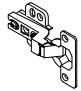

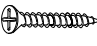
Step 13

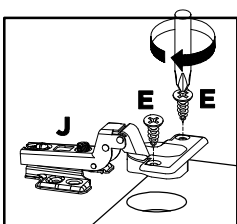
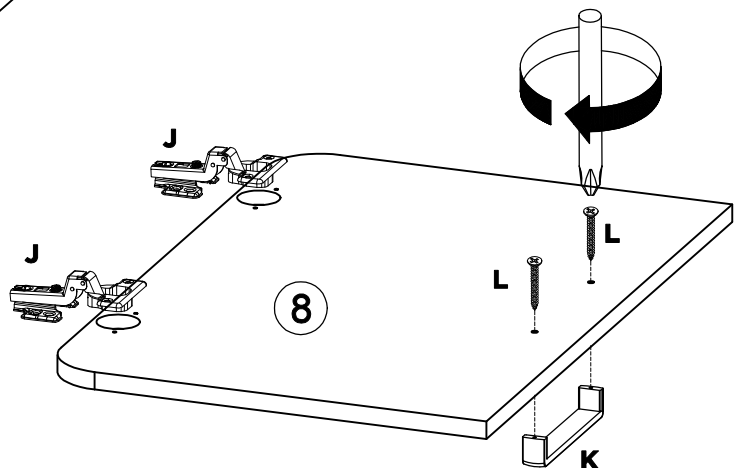
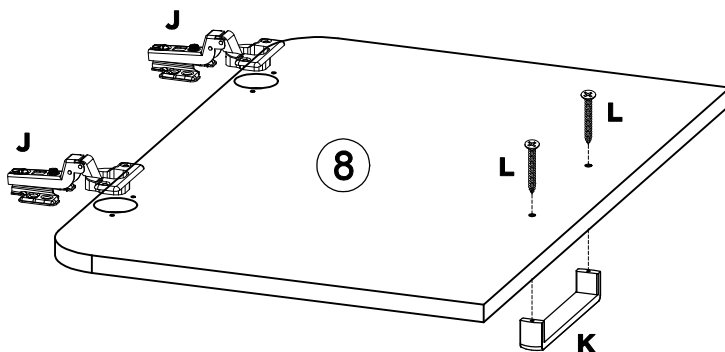
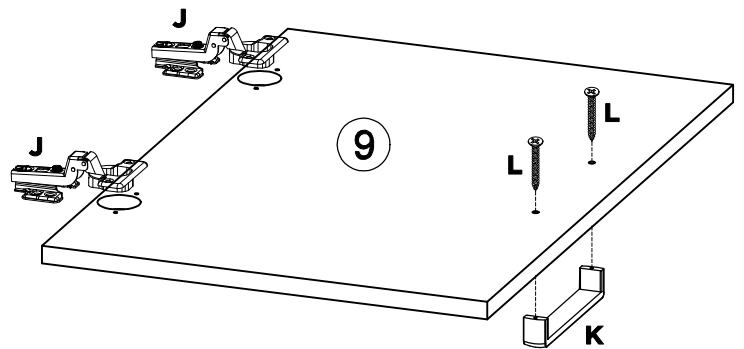
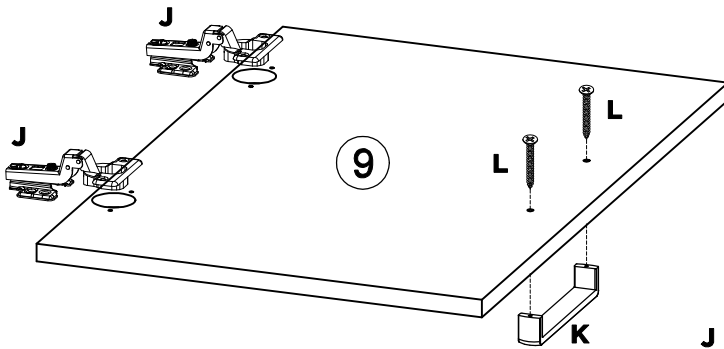
-Assemble the panel 7 into between panel 3 and 4.



Step 14

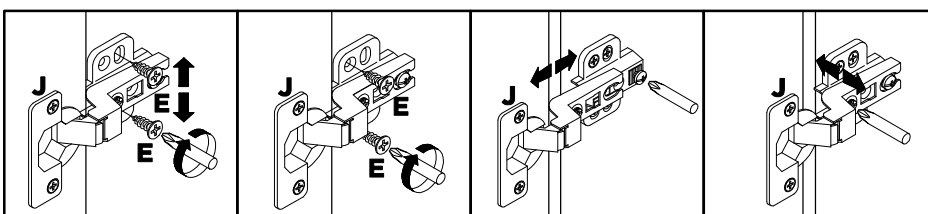
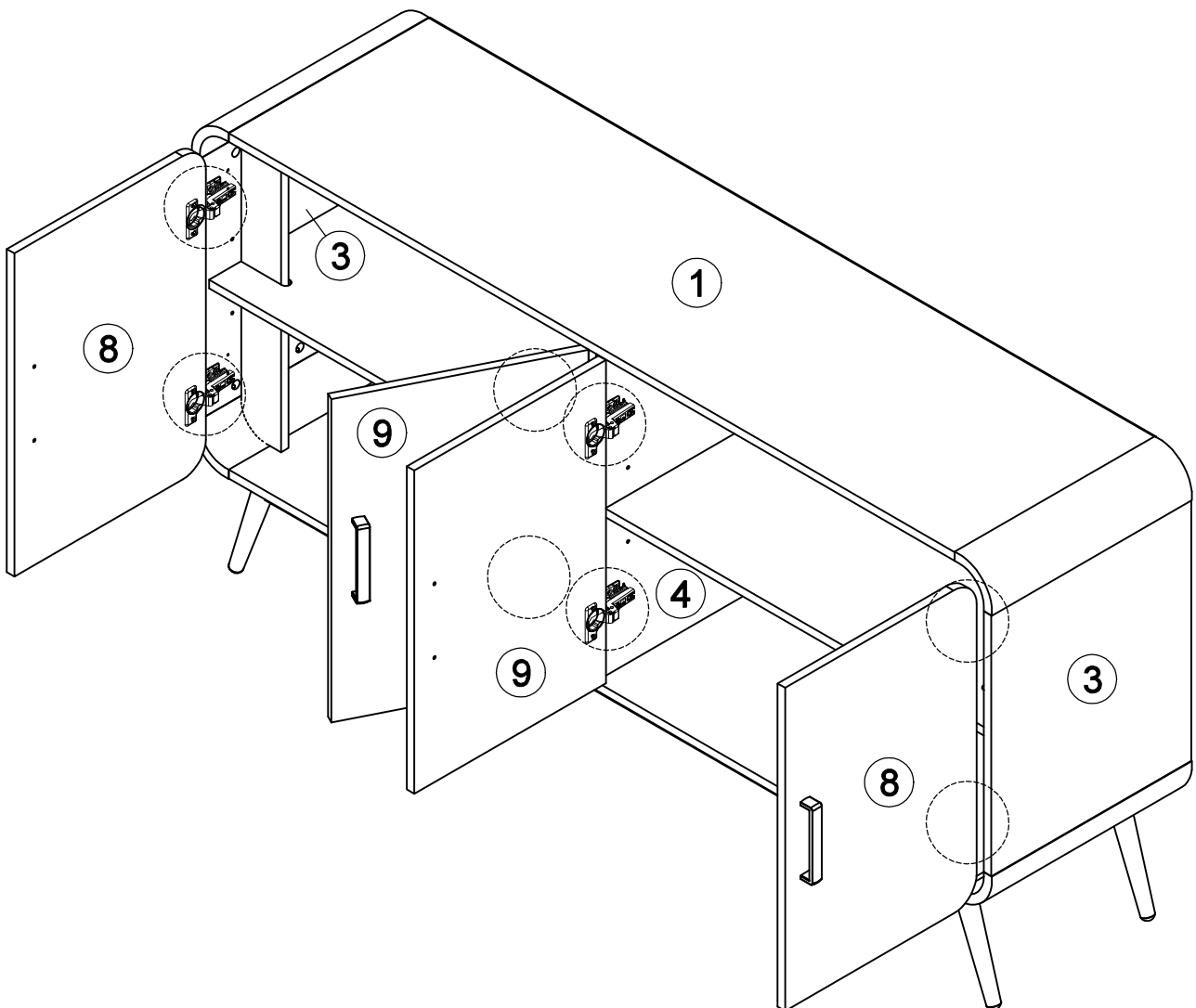
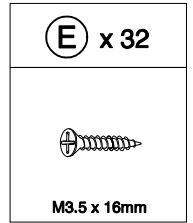
- Fix hardware J to panel 8 and 9 by using hardware E.
- Fix hardware K to panel 8 and 9 by using hardware L.

(E) x 16	(J) x 8
 M3.5 x 16mm	
(K) x 4	(L) x 8
	 M4 x 25mm



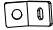

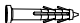
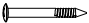
Step 15

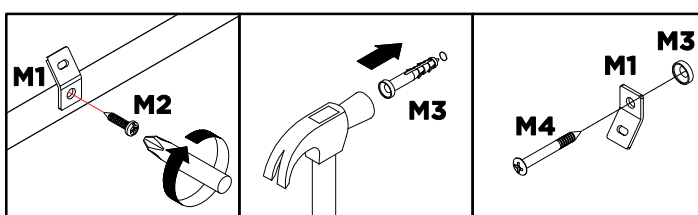
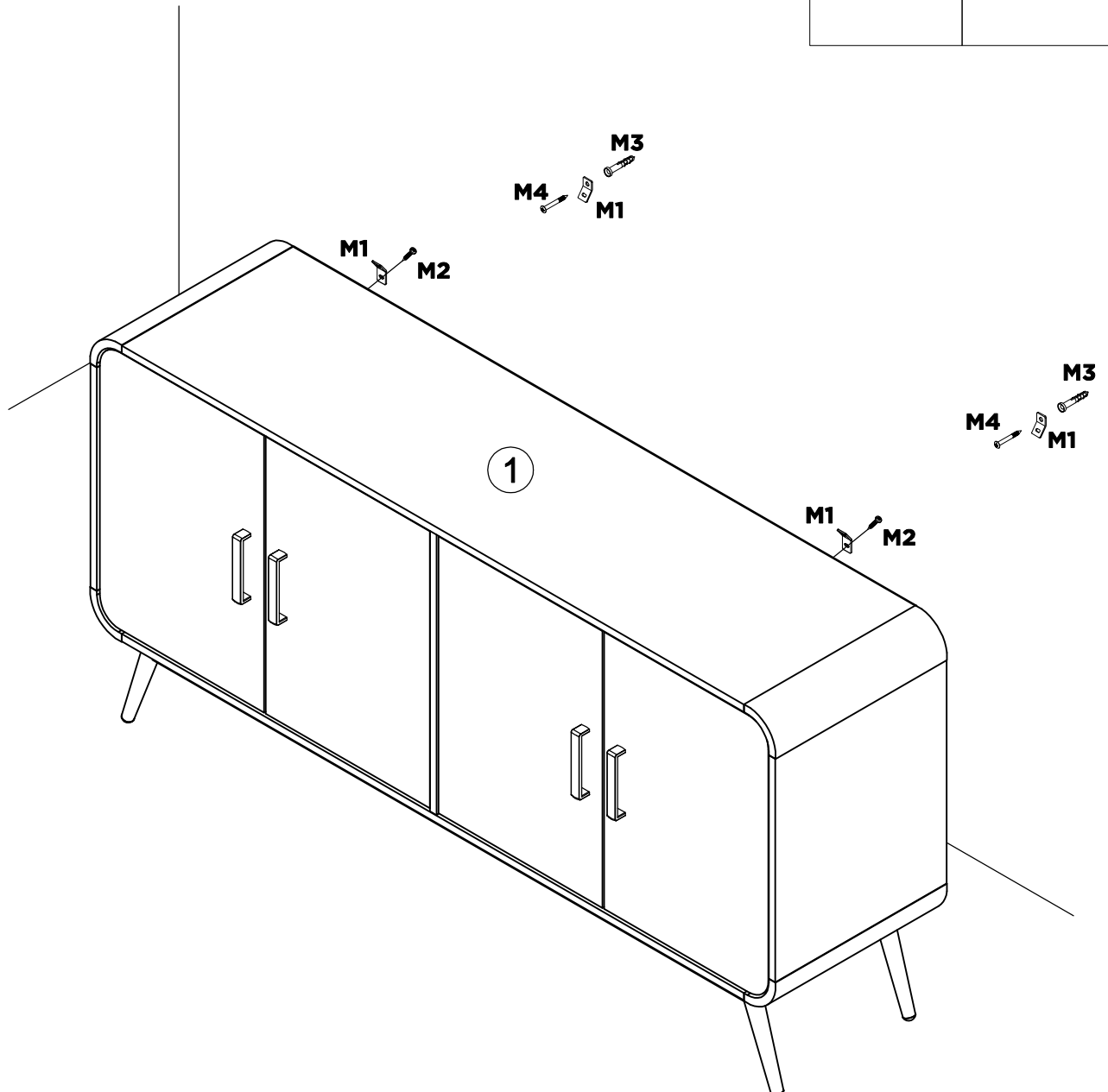
- Assemble panel 8 to panel 3 by using hardware E.
- Assemble panel 9 to panel 4 by using hardware E.



Step 16

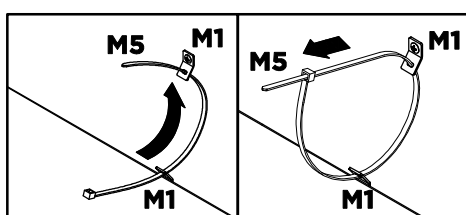
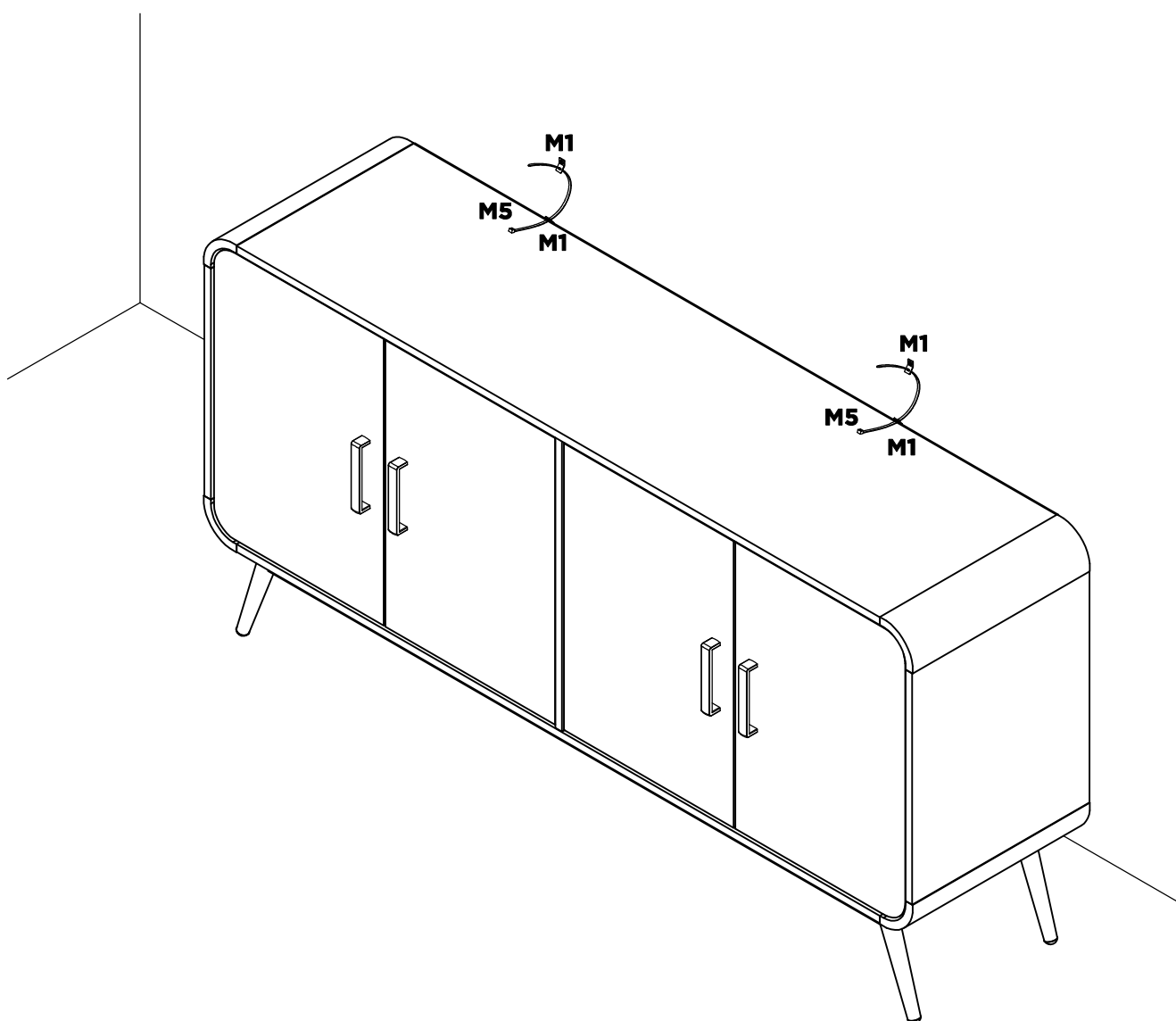
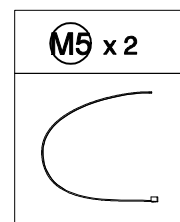
- Fix hardware M1 into panel 1 by using hardware M2.
- Mark and use the power drill to drill a hole on the wall.
- Hit hardware M3 into the wall.
- Assemble hardware M1 to M3 by using hardware M4.

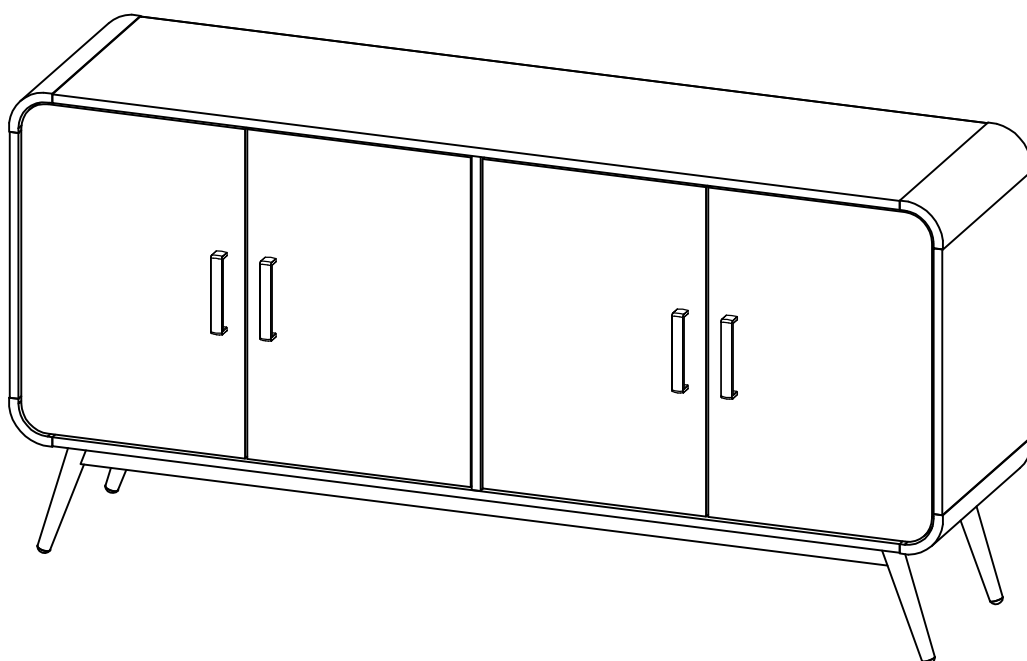
M1 x 4	M2 x 2
	
M3 x 2	M4 x 2
	



Step 17

- Connect both of the hardware M1 by using hardware M5.
- Tighten the hardware M5.





Warning

DO NOT stand on the product as this may damage the product and cause serious bodily injury.