

# Installation Guide

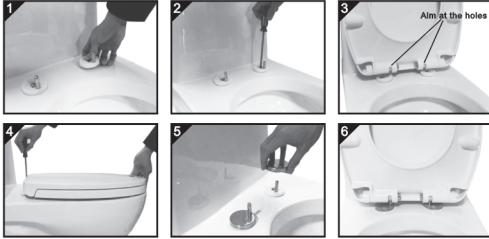
# MUTE SEAT COVER

## 1 Parts



| NO. | Description               | Qty |
|-----|---------------------------|-----|
| 1.  | Stainless Steel Hinge cap | 2   |
| 2.  | Bolt                      | 2   |
| 3.  | Washer                    | 2   |
| 4.  | Hinge Base                | 2   |
| 5.  | Rubber Cork               | 2   |

## 2 Installation Guide



1. Insert the setscrew on the hinge base into the holes on the pan.
2. Tighten the setscrew but not to the end in order to adjust the seat cover properly.
3. Aim at the holes and adjust the hinge base to make the seat cover and pan match. Take out the seat cover once the installation position is confirmed.
4. Fix the hinge base on the pan firmly.
5. Put the cap into the hinge base.
6. Fix the seat cover into the hinge base.



## 3 Innovation Functions

ENTIRELY NEW SUPPORT MAKES YOUR ROOM TIDY AND CLEAN



Please abide by the following illustrations to ensure safety

Please read carefully the relative notice before operation. This manual lists many kinds of marks in detail to avoid injuring body, or suffering loss on property. The marks and explanations are as follows, please keep it in the eyeable place.

**Warning!** It may cause injuring body or damaging object if ignore this mark.

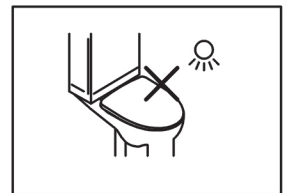
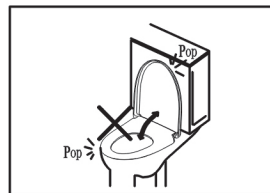
● means "forbidden".

|  |  |   |  |
|--|--|---|--|
|  |  | Do not stand on the toilet cover, and do not place heavy objects on it. (Or else it may cause crack.)   |  |
|  |  | Do not clean the toilet seat with household cleaners, volatile, thinner and eradicator, or use nylon brush, and avoid chlorine-containing, corrosive and a brasive cleaners. Maintain the shiny surface by using soft fabric and clean water. (Or else it may cause abrasion or crack.) |  |
|  |  | Do not let child play the toilet cover, to avoid hurting fingers and other accident.  |  |

## Relative Notice

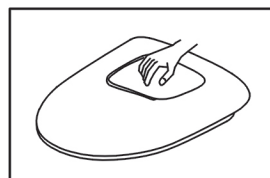
Open and close toilet seat cover tenderly. (Or else it may cause crack.)

Avoid sunlight and other lamp-house irradiate directly. (Or else it may turn colors.)



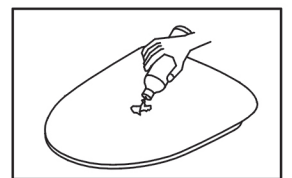
- Toilet seat and cover both have the function of slow closing.
- Closing speed varies for room temperature and usage frequency.
- Please open toilet seat and cover completely, the function of slow closing will fail off in the midway, or hurt fingers etc.

## Maintenance



### 1. Periodical maintenance

- Wipe gently with wet fabric.
  - Wipe off smut
- Wash it with neuter cleaners (such as soap powder), and then dry it with clean fabric.



### 2. Cleaners

- Do not wipe and wash toilet seat and cover with abrasive powder.
- Do not use disinfectant, eradicator or other aerosol cleaners.
- Some chemical and cosmetic in bathroom may damage toilet seat and cover.