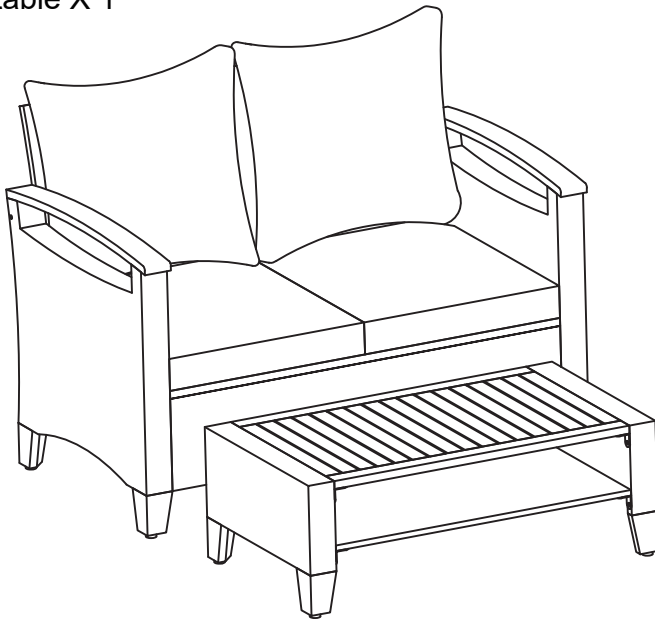


Steel wicker loveseat X 1
Coffee table X 1



Thank you for choosing us!

Our goal is to provide high quality outdoor furniture with outstanding customer service-all at an affordable price.

Please let us know how we are doing!


Problems?

(Missing pieces, wrong pieces...)

We will fix it immediately. Send us an email

Happy?

Please leave us a review!
You can make others happy too!

 Tip: We recommend flattening the boxes to use as a protective work surface, or setting up your new furniture on a soft floor like a carpet.



**IMPORTANT, RETAIN FOR
FUTURE REFERENCE:
READ CAREFULLY.**

Safety

- For domestic use only.
- Always use on firm level ground.
- Don't tighten all the bolts before the product is fully assembled.
- It would be useful to ask someone to help you assemble the product.
- Periodic structural checks of this product should be undertaken, do not use if you have any doubts about its fitness for purpose.
- Do not stand on the seat.
- Do not let children play with this product.
- Maximum load per seat: 250 lbs.

At the beginning of the season

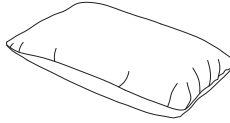
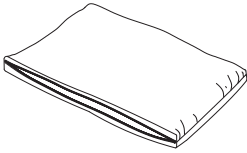
- Check to ensure that all components and fixings of this product are secure, do not use if you have any doubts about its fitness for purpose.

At the end of the season

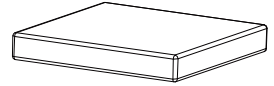
- This product should be stored under cover during prolonged spells of adverse weather (wet or cold) and also during the winter (ideally in a garden shed or garage).
- Always clean and dry thoroughly before storage.

How to Put on the Cushion Cover

1

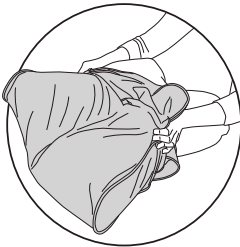


OR



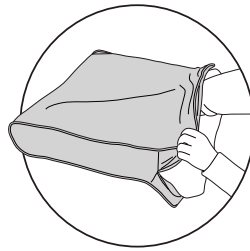
1. Take the cushion covers and inners out of the carton.

2



2. Fold the inner in half, pushing the sides together, then begin to slide the cover onto it.

3



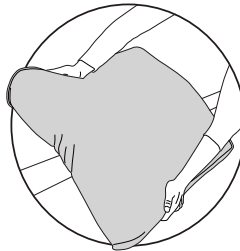
3. Align both far corners, then gently compress insert while fitting cover around it.

4



4. To avoid a stuck zipper, please pull the fabric away from the zipper before moving forward.

5
















5. When all done, please pat the cushion or give it a little shake to make it more flat.

Care & Cleaning Guidelines

The covers are machine washable. Before washing, please zip the cover up to avoid catching other clothes. You can clean the dust on the chair / table / footstool with a damp cloth.

COMPONENT LIST – LOVESEAT X 1

Item no.	Reference Image	Description	Qty.
A		Left Armrest	1
B		Right Armrest	1
C		Front Panel	1
D		Seat Base	1
E		Seat Back	1
J		Seat Cushion	2
K		Back Cushion	2
L		Wood Feet	4
R1		M6X40 Head Cap Screw	18
R2		M6X80 Head Cap Screw	2
R3		M6X20 Head Cap Screw	4
Z1		M6 Washer	24
X		Allen Key	2

NOTE:

Do NOT tighten any screws fully first until you have tightened all the screws.

This may cause the frame to warp.

If there is still wobbles or screw holes cannot be aligned, loosen the screws and tighten sequentially.

If the Loveseat is not stable it could lead to damage to the product.

01

(R1)

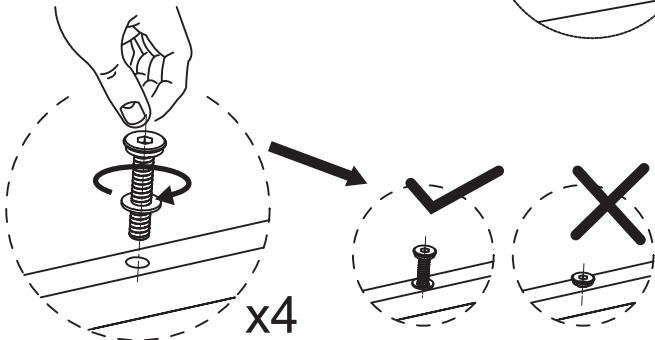
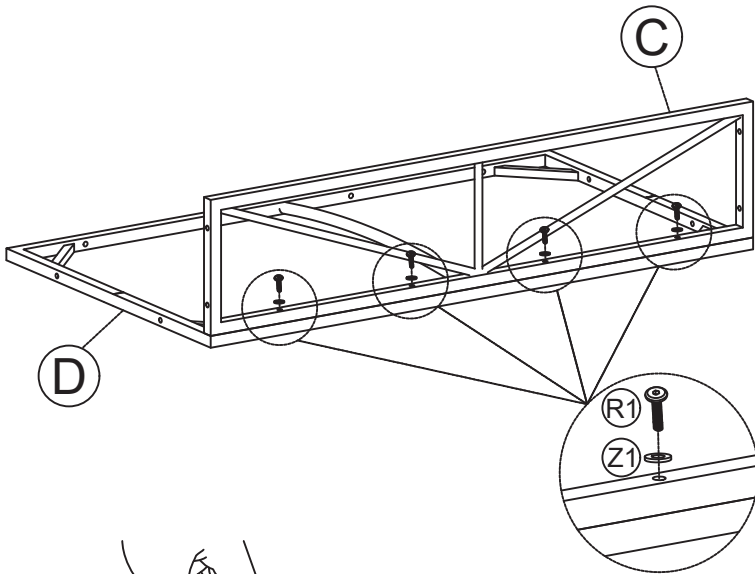


(Z1)



M6*40 Screw x4

Washer x4



NOTE:DO NOT TIGHTEN THE SCREWS COMPLETELY.

02

R1

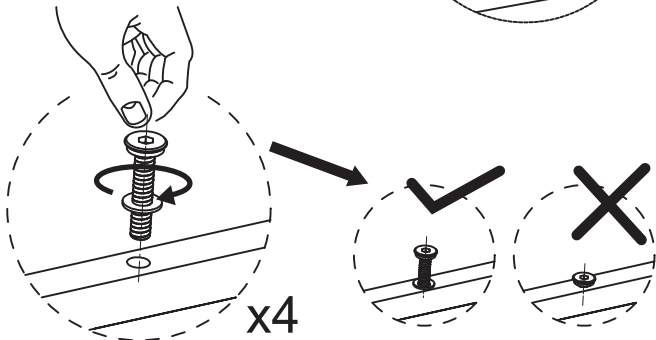
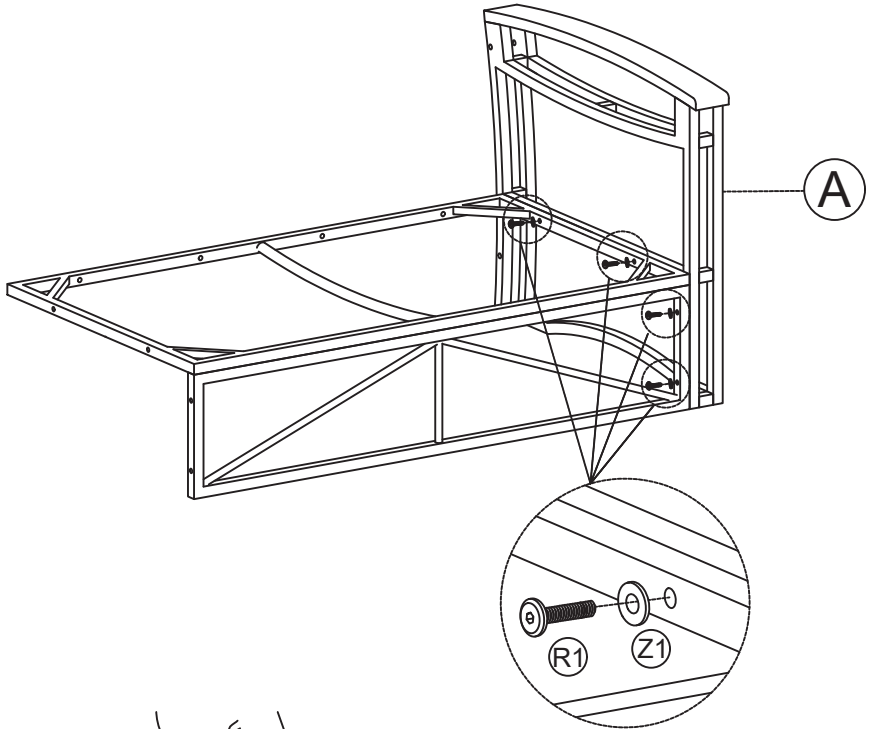


Z1



M6*40 Screw x4

Washer x4



NOTE: DO NOT TIGHTEN THE SCREWS COMPLETELY.

03

(R1)

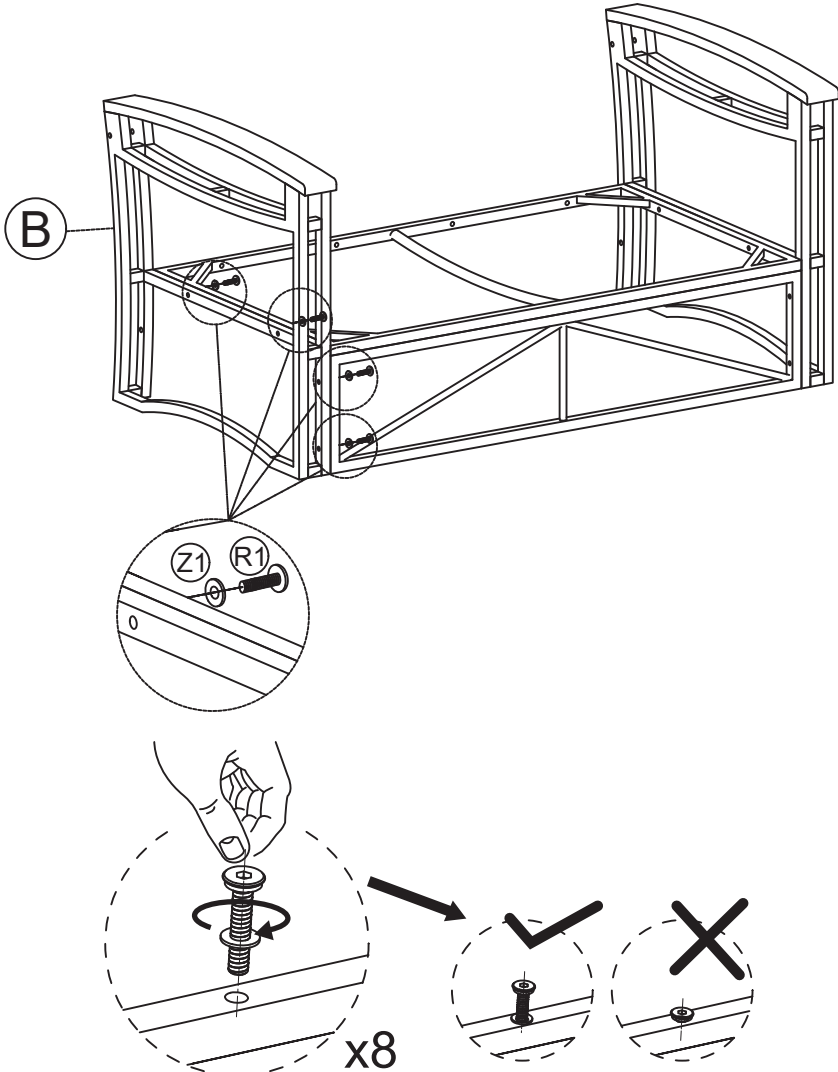


(Z1)



M6*40 Screw x4

Washer x4



NOTE: DO NOT TIGHTEN THE SCREWS COMPLETELY.

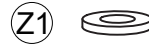
04



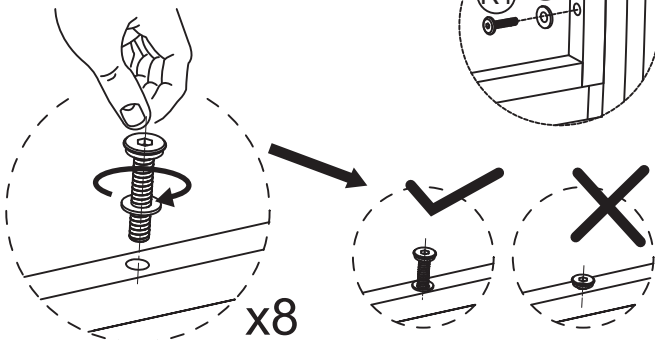
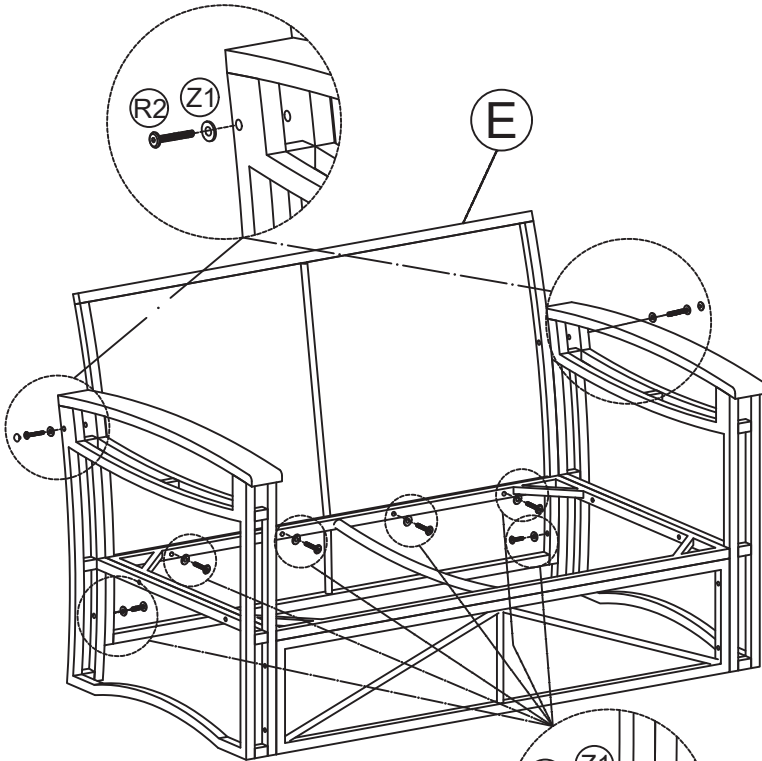
M6*40 Screw ×6



M6*80 Screw ×2



Washer ×8



NOTE: DO NOT TIGHTEN THE SCREWS COMPLETELY.

05

R3

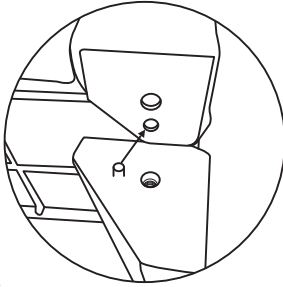


Z1

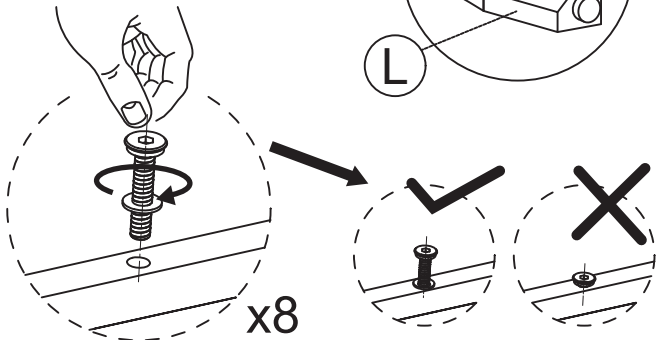
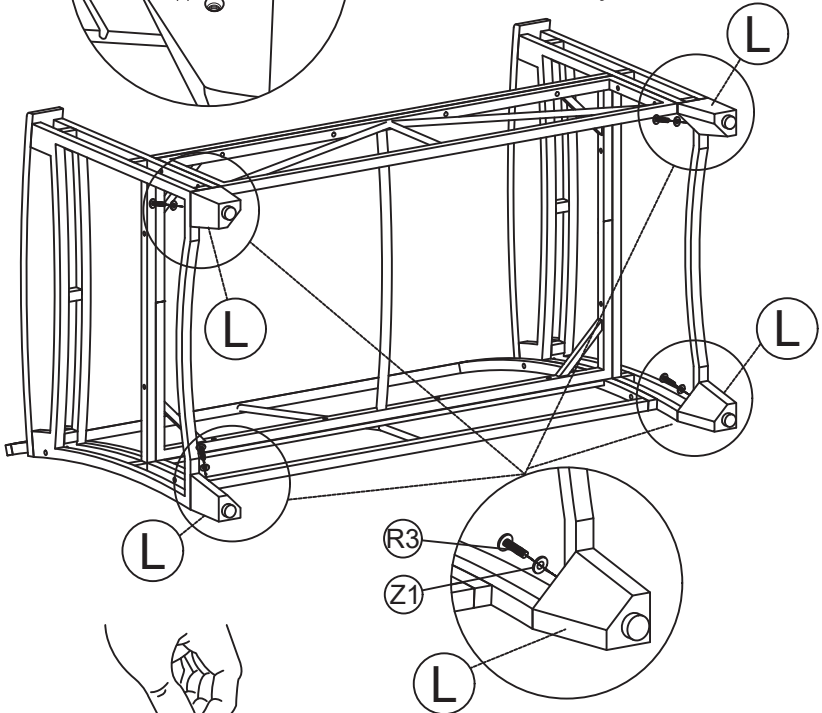


M6*20 Screw ×4

Washer ×4



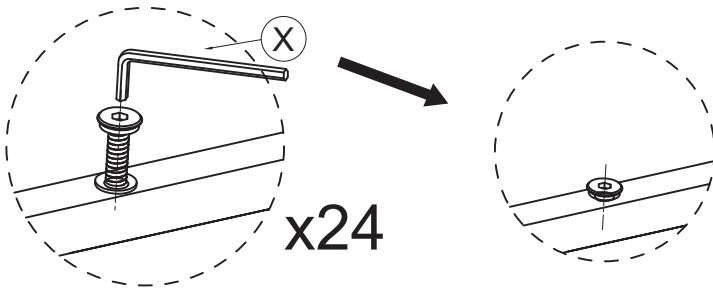
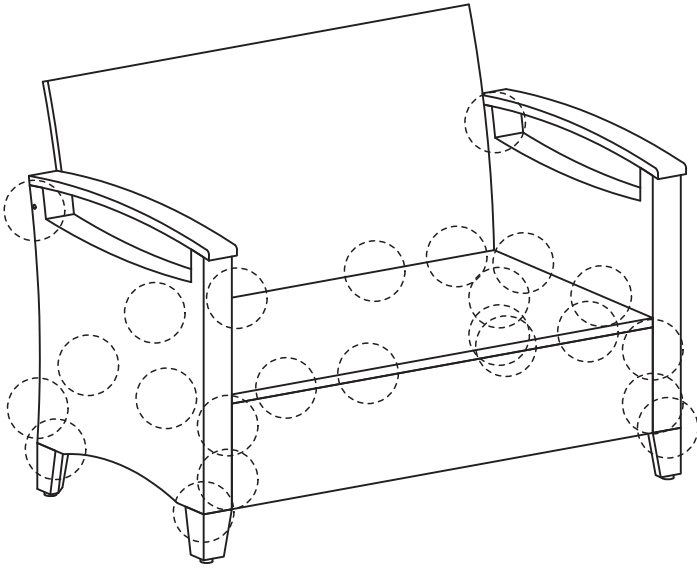
Assemble the iron pin into the small hole, and the big hole is for screw assembly.



x8

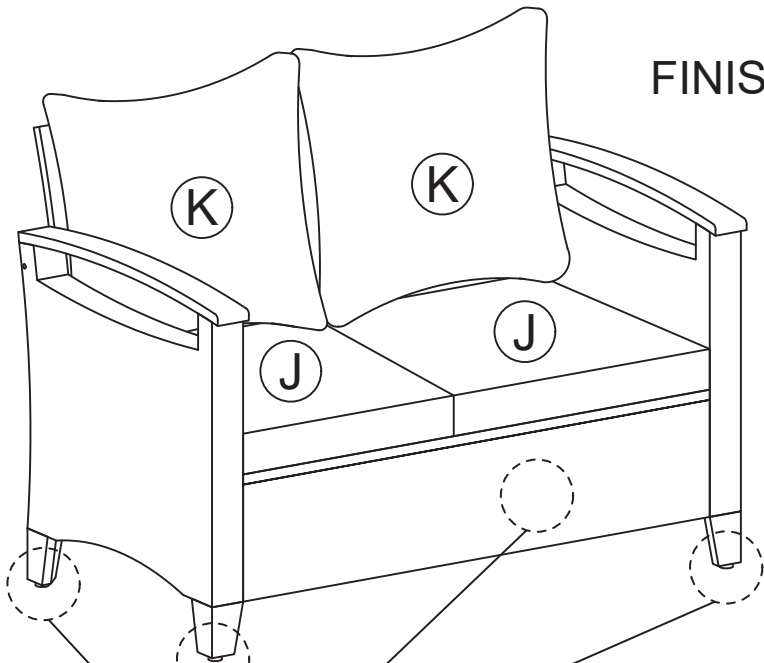
NOTE: DO NOT TIGHTEN THE SCREWS COMPLETELY.

06 Tighten all 24 Screws into place with Allen Key.



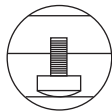
NOTE:IF ANY SCREW HOLES CANNOT BE ALIGNED, LOOSEN ALL THE SCREWS AND GO BACK STEP 1 AND RESTART ASSEMBLY.

07

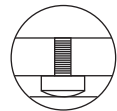


FINISH

Adjust Pre-installed levellers height for balance













Adjust height for balance



Adjust low for balance

COMPONENT LIST – TABLE X 1

Item no.	Reference Image	Description	Qty.
F		Table Leg	2
G		Table Top Panel	1
H		Wooden Table Top	1
I		Table Support Bar	1
L		Wood Feet	4
R3		M6X20 Head Cap Screw	4
R4		M6X35 Head Cap Screw	4
R5		M6X15 Head Cap Screw	14
Z1		M6 Washer	22
S		Fitting	4
X		Allen Key	2

NOTE:

Do NOT tighten any screws fully first until you have tightened all the screws.

This may cause the frame to warp.

If there is still wobbles or screw holes cannot be aligned, loosen the screws and tighten sequentially.

If the Table is not stable it could lead to damage to the product.

01

(R4)

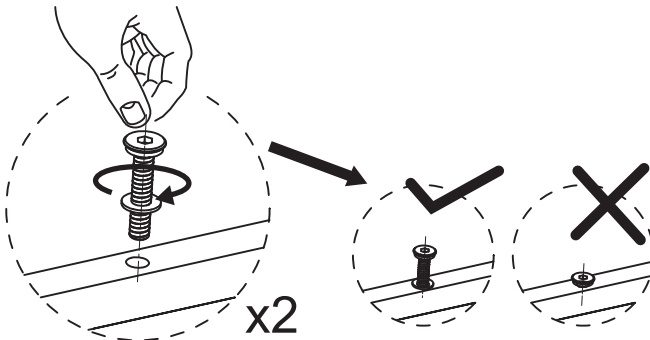
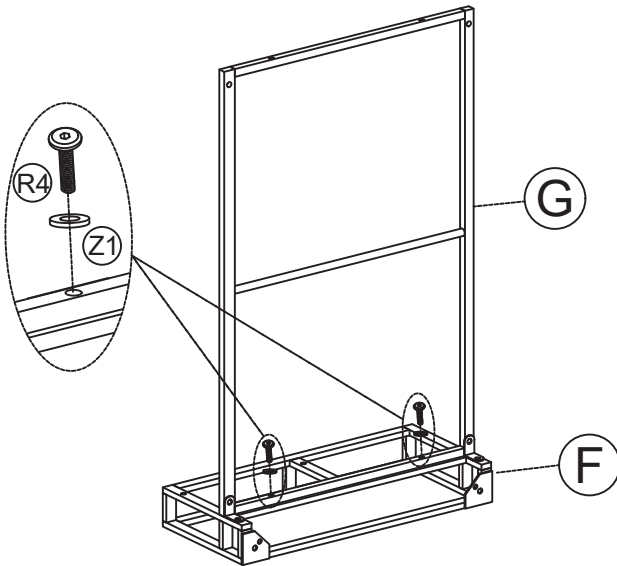


(Z1)



M6*35 Screw x2

Washer x2



x2

NOTE:DO NOT TIGHTEN THE SCREWS COMPLETELY.

02

R5



S



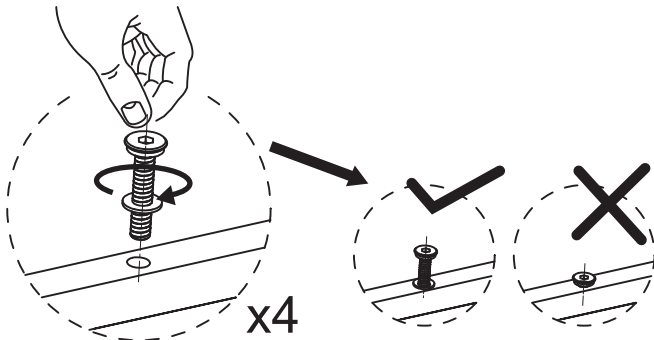
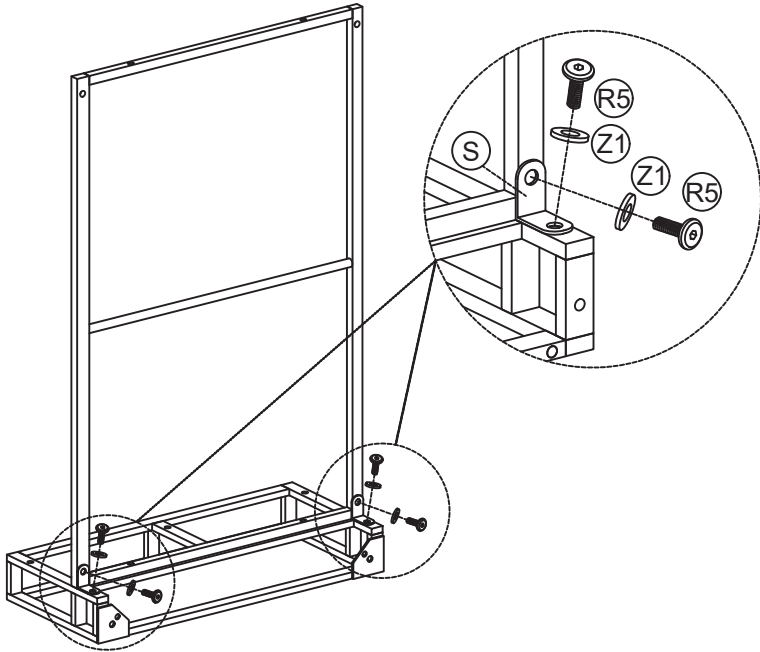
Z1



M6*15 Screw x4

Fitting x2

Washer x4



NOTE: DO NOT TIGHTEN THE SCREWS COMPLETELY.

03

(R4)

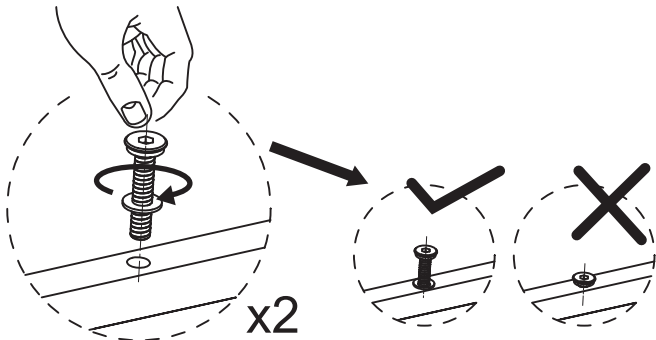
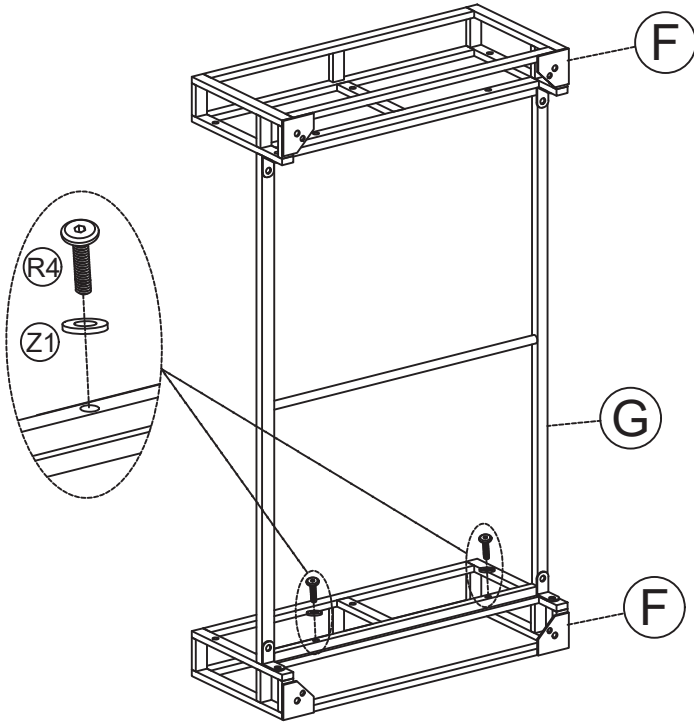


(Z1)



M6*35 Screw x2

Washer x2



NOTE: DO NOT TIGHTEN THE SCREWS COMPLETELY.

04

R5



S



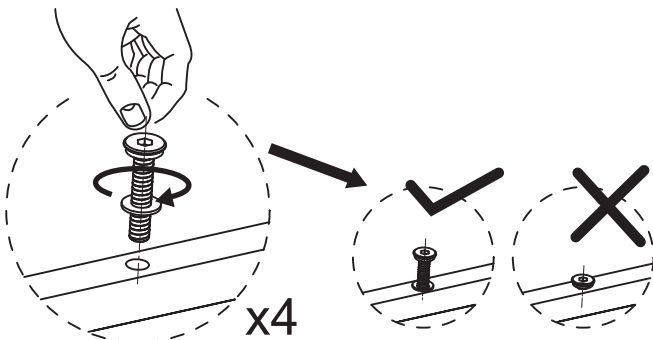
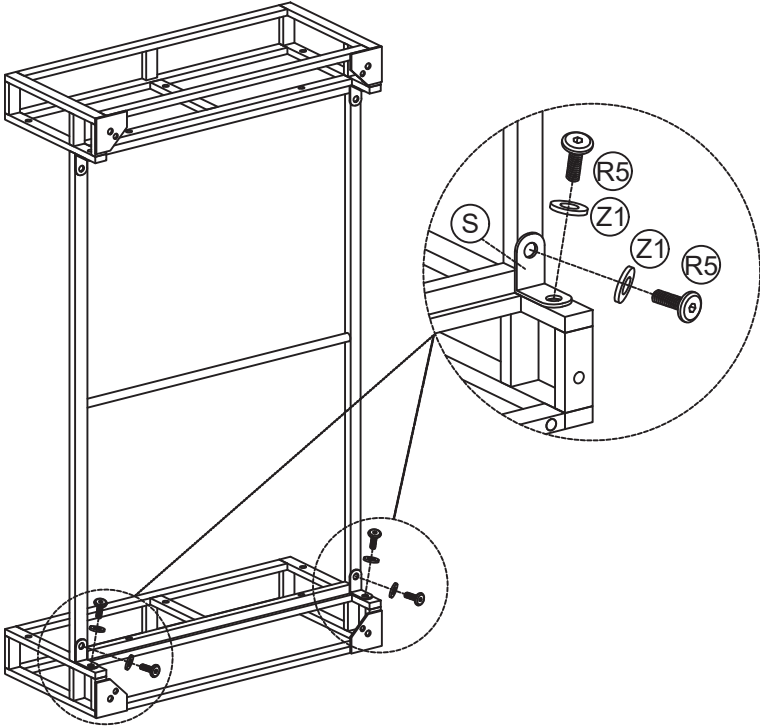
Z1



M6*15 Screw x4

Fitting x2

Washer x4



NOTE: DO NOT TIGHTEN THE SCREWS COMPLETELY.

05

R5

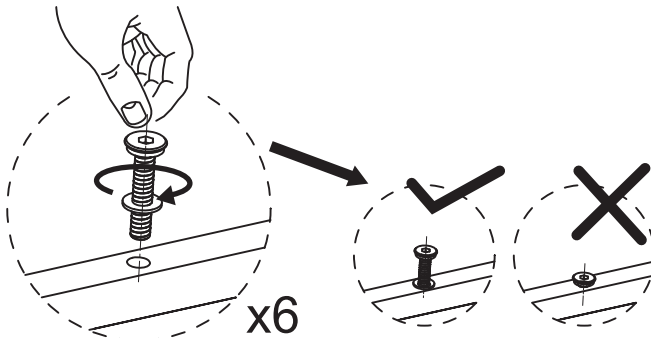
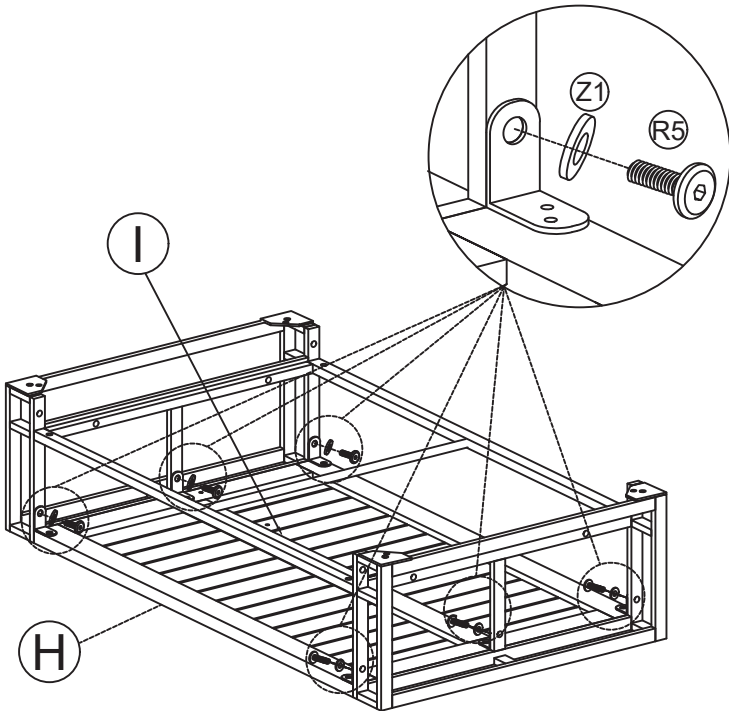


Z1



M6*15 Screw ×6

Washer ×6



NOTE: DO NOT TIGHTEN THE SCREWS COMPLETELY.

06

R3

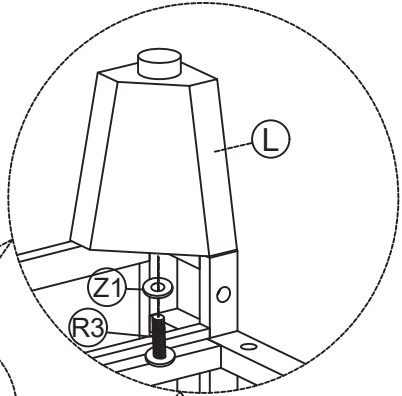
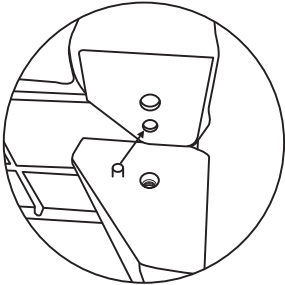


Z1

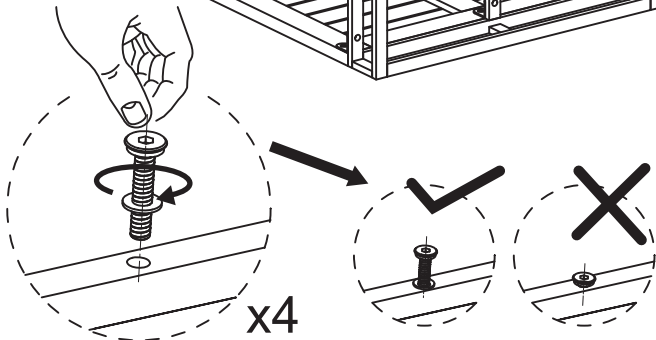
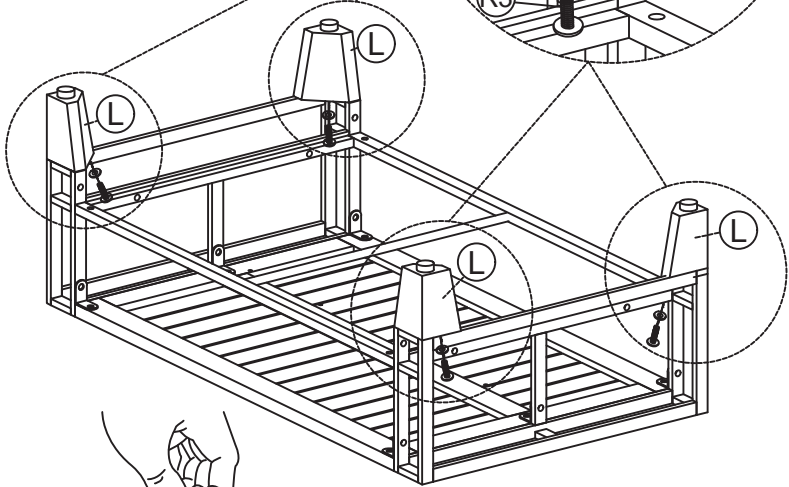


M6*20 Screw x4

Washer x4

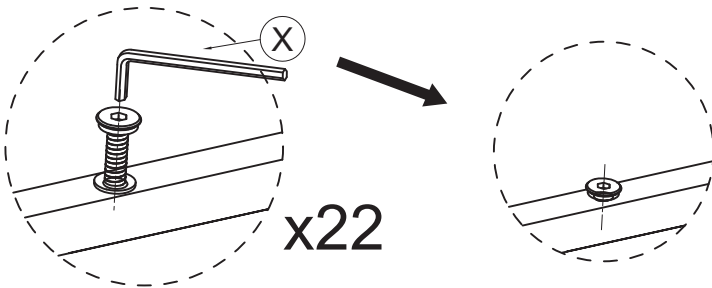
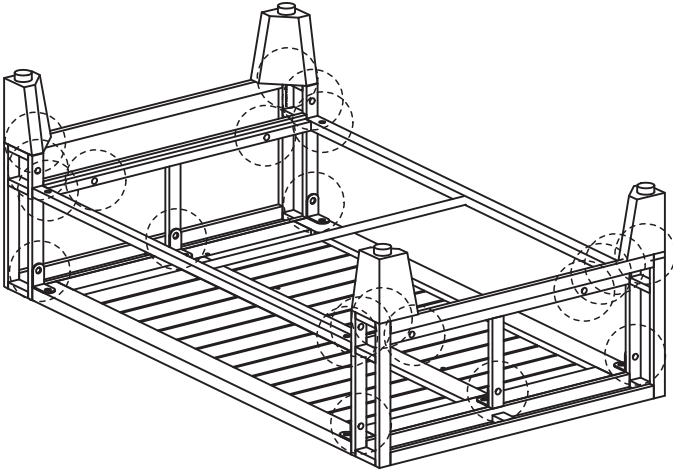


Assemble the iron pin into the small hole, and the big hole is for screw assembly.



NOTE: DO NOT TIGHTEN THE SCREWS COMPLETELY.

07 Tighten all 22 Screws into place with Allen Key.



NOTE:IF ANY SCREW HOLES CANNOT BE ALIGNED, LOOSEN ALL THE SCREWS AND GO BACK STEP 1 AND RESTART ASSEMBLY.

08

FINISH

