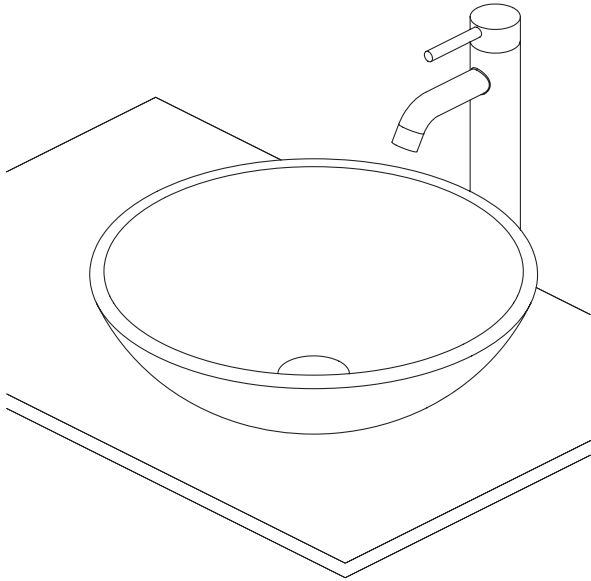


STEP 6

Check the position and stability of the vessel and faucet. Open the faucet valves, and check for leakage.



CARE AND CLEANING

To keep your vessel looking new, make sure you rinse it out thoroughly after each use. **DO NOT USE ABRASIVES** on this product, as they will scratch and ruin the surface. Stubborn stains, paint, or tar can be removed with turpentine or paint thinner.



FEEDBACK ★★★★★

Thank you very much for purchasing from us.

We have always been trying to provide the best service and reliable products for every customer.

We sincerely hope you will be satisfied with our products and leave us FIVE STARS and POSITIVE feedback/ review in our page.

However, accident may happen sometimes, please contact us to resolve any issue before leaving a negative feedback.

Many thanks and welcome to our shop again!

Contact number: (323) 393-8260

E-mail: service@eclifeusa.com

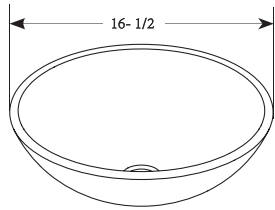


INSTALLATION INSTRUCTION

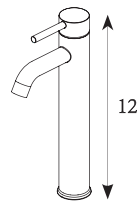
* General purpose manual

DIMENSIONS

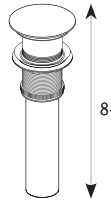
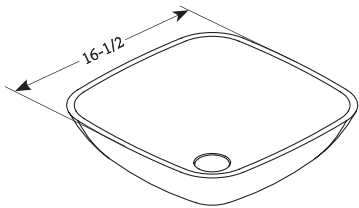
Model 1: round vessel sink



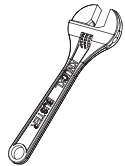
Unit:inch



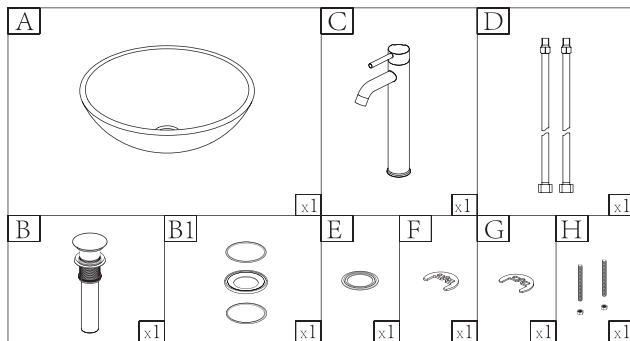
Model 2: square vessel sink



YOU MAY NEED (NOT SUPPLIED)



PARTS LIST

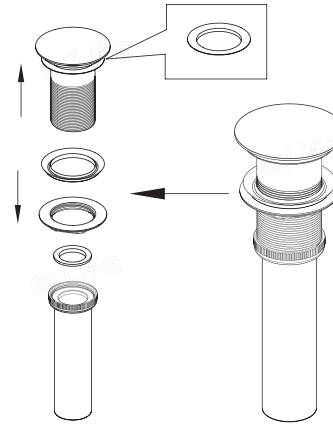


CAUTION: Please confirm the part list before installation

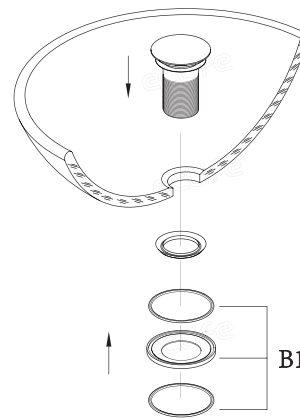
INSTALLATION

STEP 1

Take apart the pop up drain and put the thin rubber washer at the top of body.



STEP 2

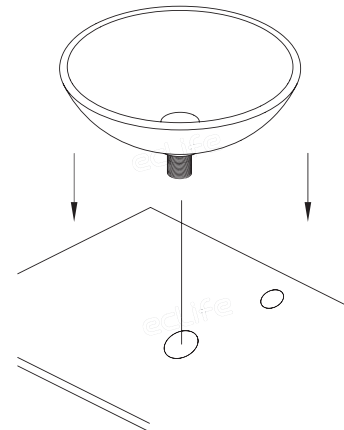


Insert the drain top into the vessel. Install thick rubber washer, 2 O-rings and mounting ring in turn.

Note: Installation sequence of O-rings refer to the illustrations.

STEP 3

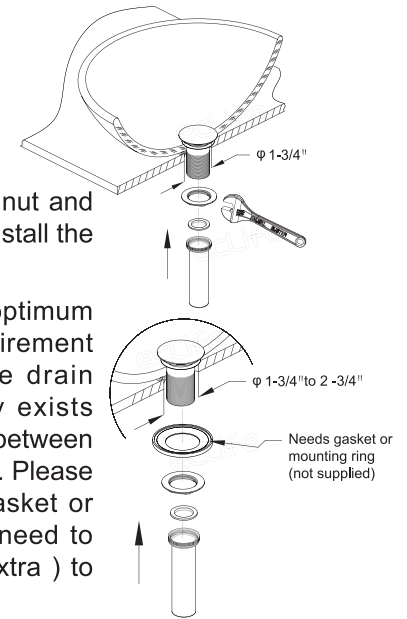
Carefully position the vessel with drain top on the tabletop and adjust the assembly parts in good position.



STEP 4

Install the drain nut and tighten it, then install the tall piece.

Caution: The optimum drain hole requirement is 1-3/4". If the drain hole already exists and the size is between 1-3/4" and 2-3/4". Please use an extra gasket or mounting ring (need to be ordered in extra) to fix it.



STEP 5

Position the gasket under the faucet. Connect the hot and cold water pipes to the faucet. Insert the faucet into the hole. Install the rubber gasket, then the metal gasket, then the fixing bolts. Tighten the fixing bolts

