

Important:

1. It is recommended that customers use an electric screwdriver to install, it will be easy to assemble.
2. The metal frames have certain degrees of elasticity. Please DO NOT over tighten the screws during assembly. An over tightened screw can cause bent metal frame.
3. For a smooth assembly process, we suggest you keep a lite tightness for all the screws during assembly, after the whole dresser is aseembled , firmly tightening all the screws.

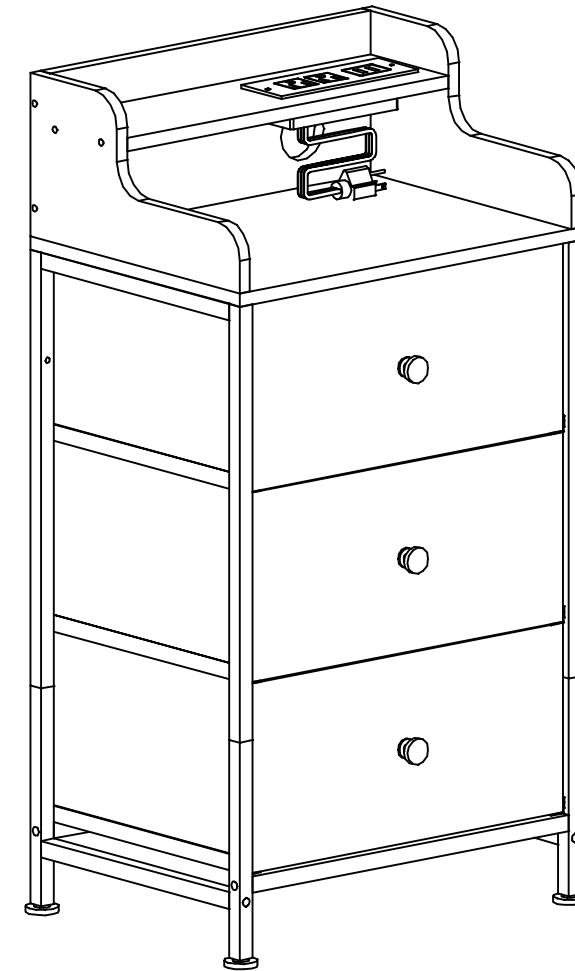
Thank you for choosing our product.

Please kindly share your shopping experience if you are satisfied with it.

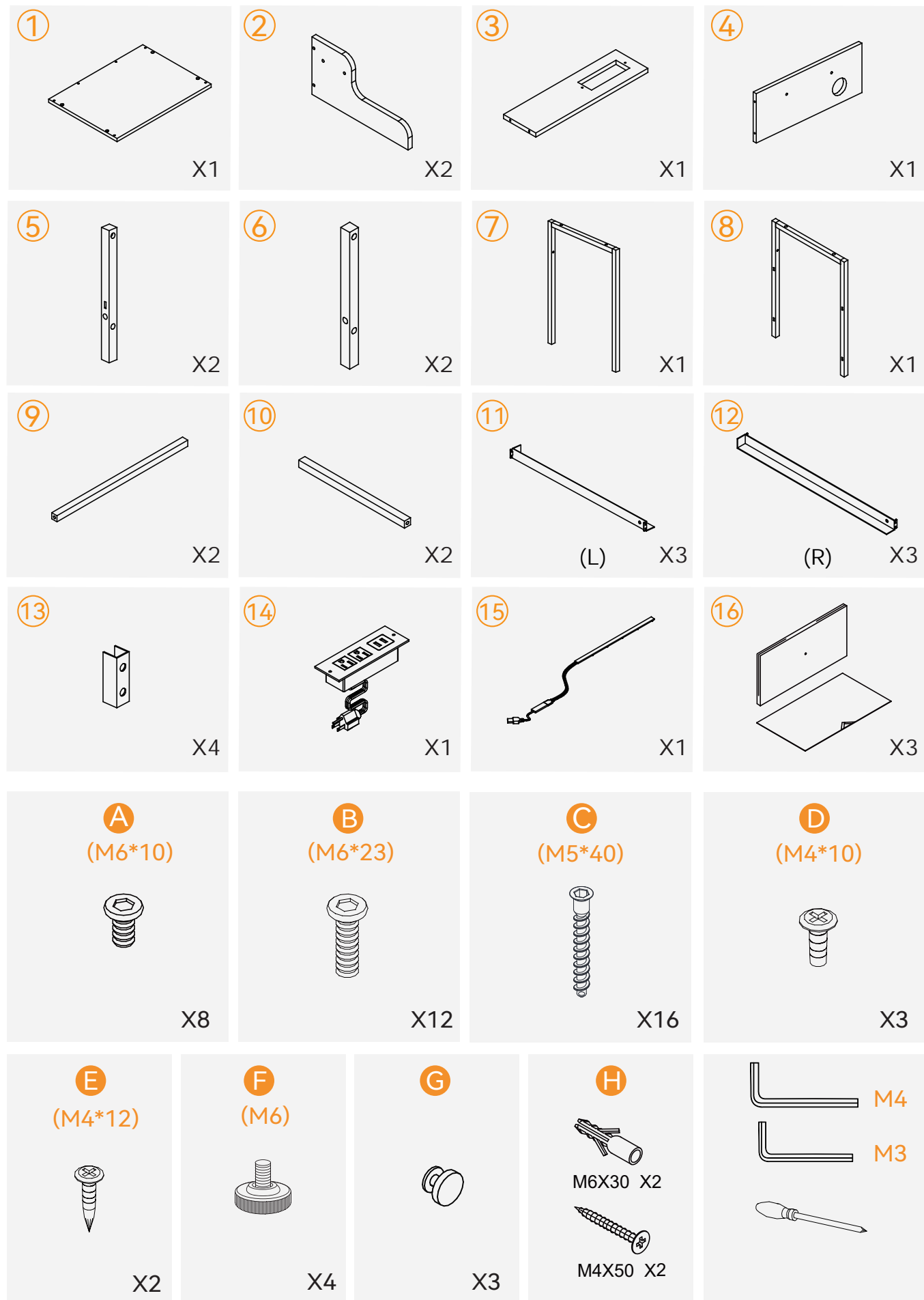
If you have any problem regarding assembling or product itself, please just contact us

We will do everything we can do to solve all the problem for you.

Exploded Drawing

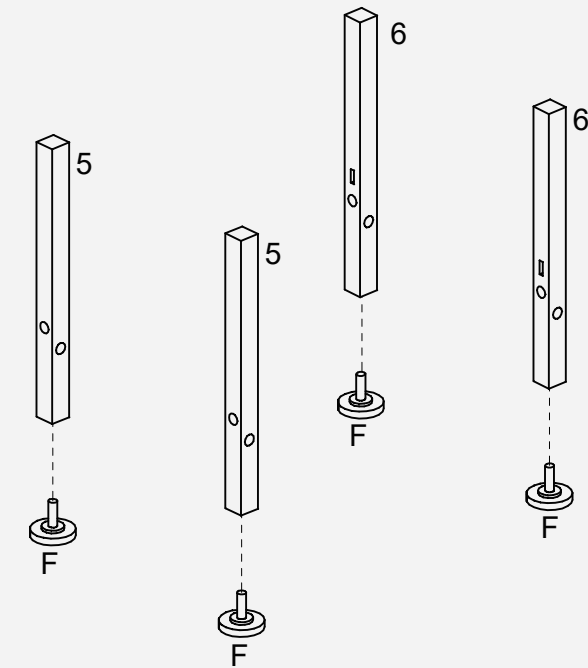


Parts:



Assembly Instruction:

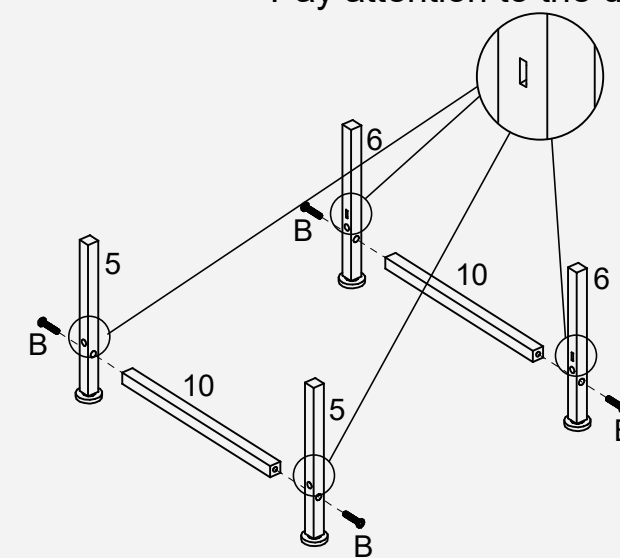
STEP1



F	M6	X4
---	----	----

STEP2

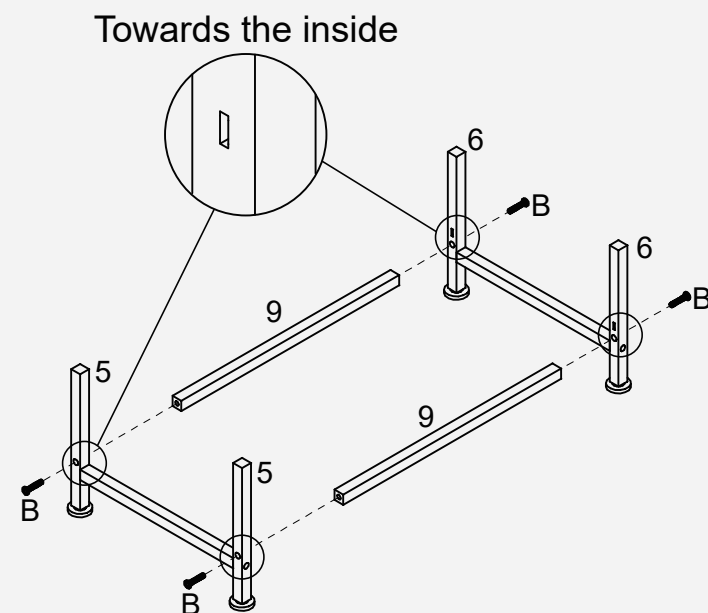
Pay attention to the direction



B	M6X23	X4
---	-------	----

Assembly Instruction:

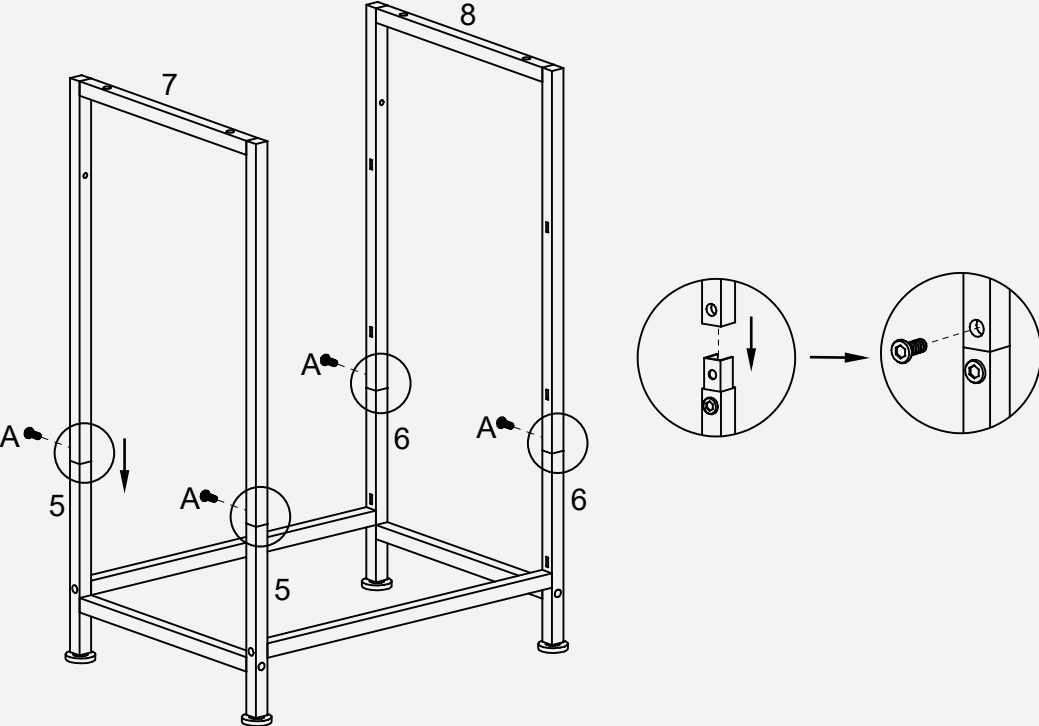
STEP3



B M6X23 X4

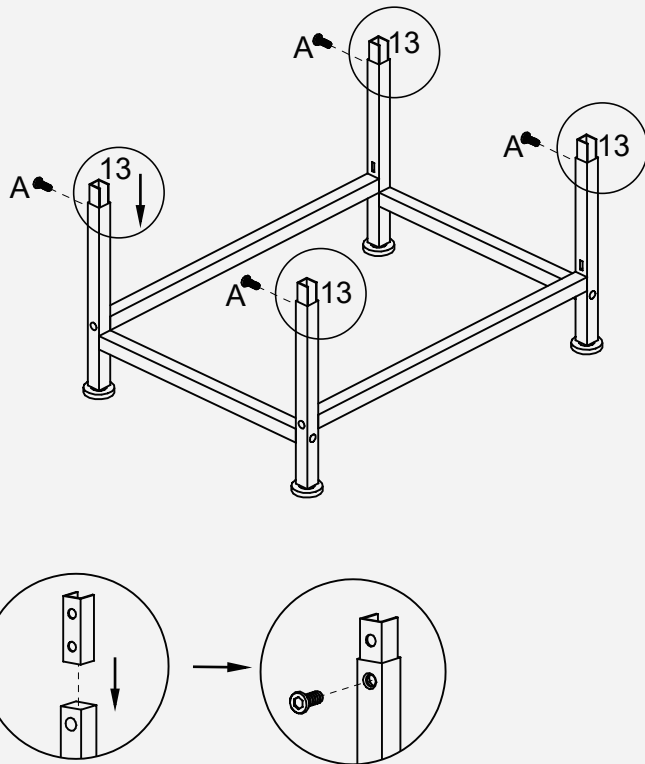
Assembly Instruction:

STEP5



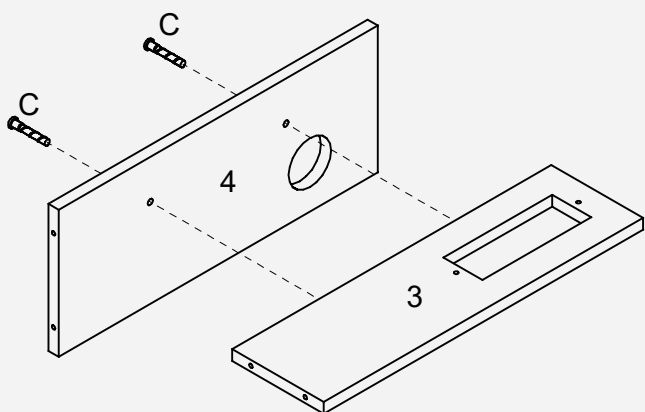
A M6X10 X4

STEP4



A M6X10 X4

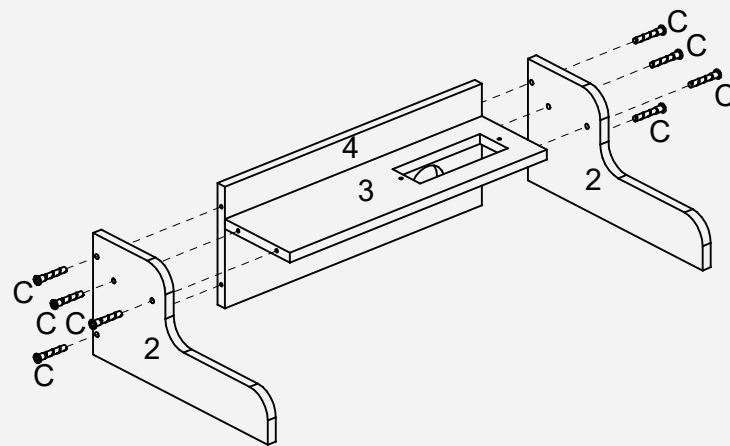
STEP6



C M5X40 X2

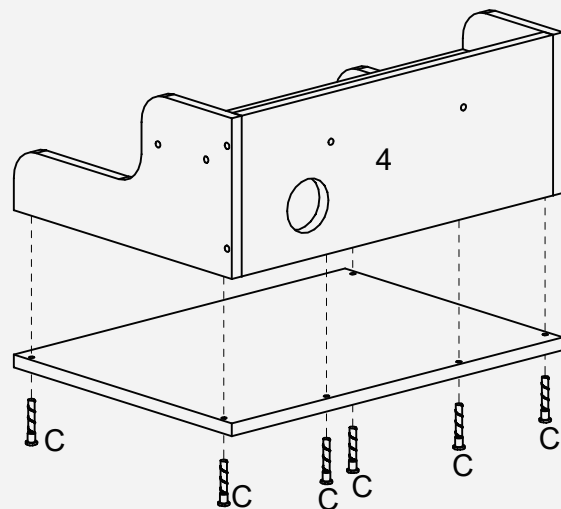
Assembly Instruction:

STEP7



C M5X40 X8

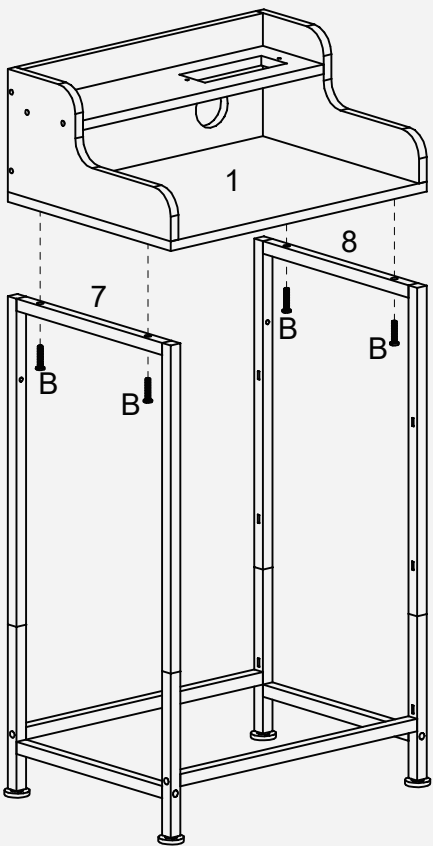
STEP8



C M5X40 X6

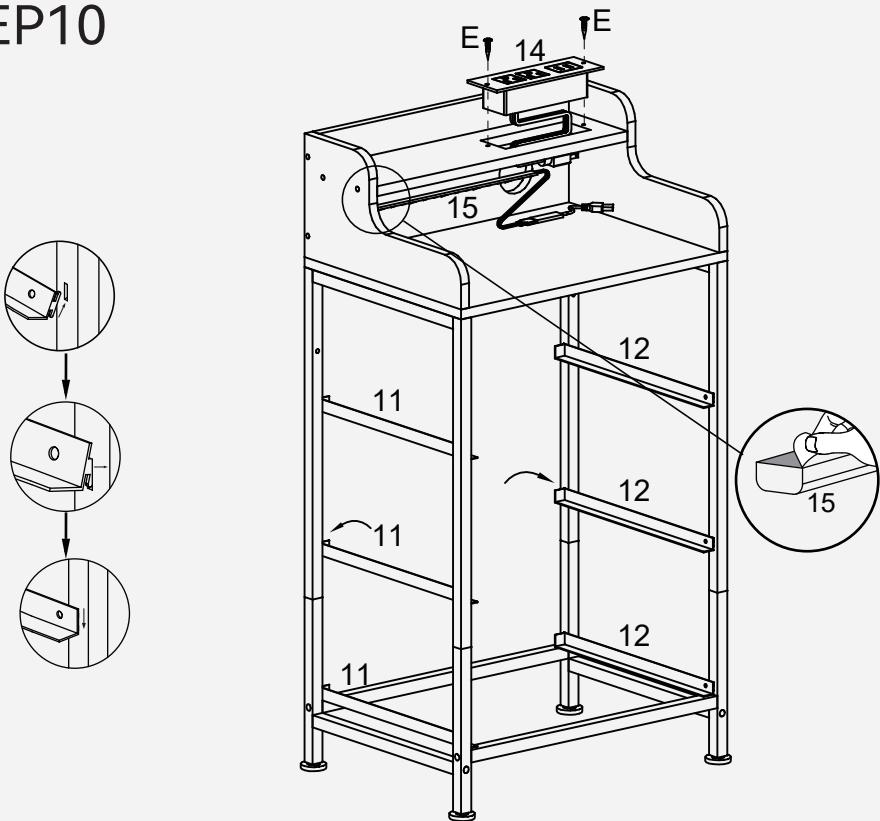
Assembly Instruction:

STEP9



B M6X23 X4

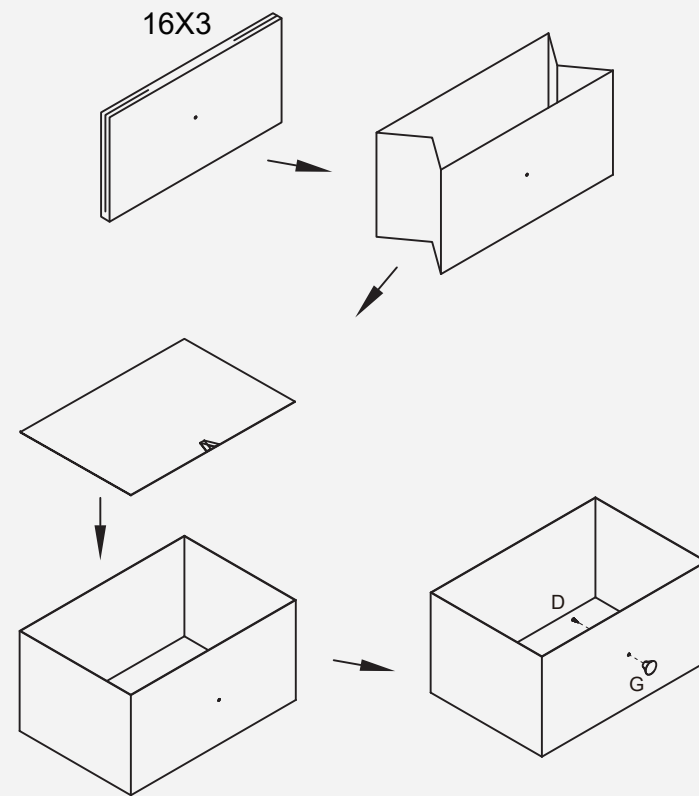
STEP10



E M4X12 X2

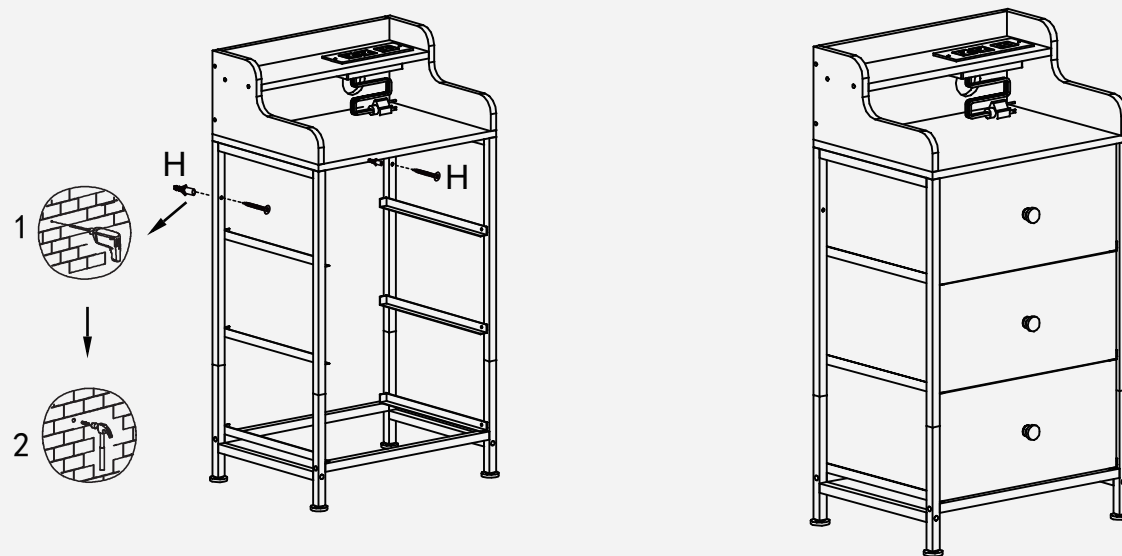
Assembly Instruction:

STEP11



D	M4X10	X3
G		X3

STEP12



H		X1
---	--	----

More Options:



3-Drawers Rustic Nightstand 1PCS
40X39X68cm
15.75"X15.35"x26.77"



3-Drawers Rustic Nightstand 2PCS
40X39X68cm
15.75"X15.35"x26.77"



3-Drawers Nightstand 1PCS
40X39X68cm
15.75"X15.35"x26.77"



3-Drawers Nightstand 2PCS
40X39X68cm
15.75"X15.35"x26.77"

More Options:



4-Drawers Rustic Dresser
100X30X52cm
39.37"X11.81"x20.47"



4-Drawers Rustic Nightstand
55X30X67.5cm
21.65"X11.81"x26.57"



8-Drawer Ladder Shapen Dresser
95.5X29X106.5cm
37.6"X11.4"x41.9"



10-Drawer Dresser
100X30X98cm
39.4"X11.8"x38.6"

GENERAL GUIDELINES:

- Please read the following instructions carefully and use the product accordingly.
- Please keep this instruction and hand it over when you transfer the product.
- This summary may not include every detail of all variations and considered steps.
- Please contact us when further information and help are needed.

NOTES:

- The product is intended for normal use only. The seller does not assume any responsibility or liability with respect to any damage caused by incorrect assembly or improper use.
- Keep away from exposure and heat sources. Place it in a dry area to avoid peeling or fading.
- Please check if there is any welding spatter or debris when you receive the product.
- If there are defective or missing parts after unpacking, please contact us immediately.
- Use soft cloth and neutral detergent to wipe it clean, then wipe dry. Do not use an abrasive agent to wipe the product.

WARNINGS:

- During assembly, keep small parts out of the reach of children. It may be fatal if swallowed or inhaled.
- To avoid potential danger of suffocation, keep all parts and packaging (films, plastic bags and foam, etc.) away from babies and children.
- Keep away from sharp or corrosive items to avoid potential product damage or bodily injury.

How to Use Our Service?

30 days return-change policy is too short for you! You will get extra 60 days for free! Just send "90Days" , you will activate this service.
Hurry up to activate it now!