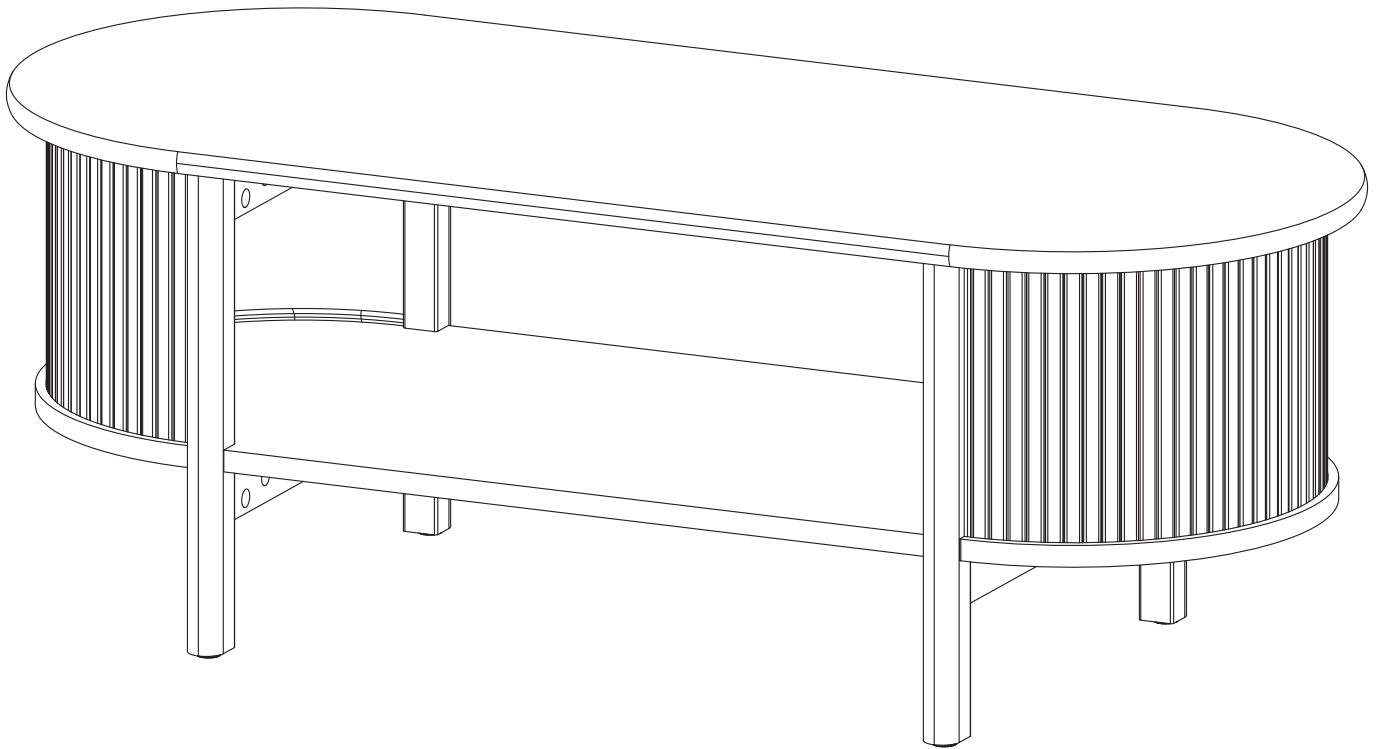


ASSEMBLY INSTRUCTIONS

EEI-6837

V0.10.23.23



Questions? Contact us!

609.256.9000 • cs@modway.com
www.modway.com

*modway

Let's get started!

*modway



Read through all of the instructions before starting



Approx. 60 minutes assembly time



2 people recommended for assembly



Care instructions are listed in the last step of this manual



Make sure you have all parts and components before discarding any packing materials

Only use hand tools to assemble this item. Do not use power tools. Do not tighten bolts or screws completely until all hardware is lined up and inserted into the holes.

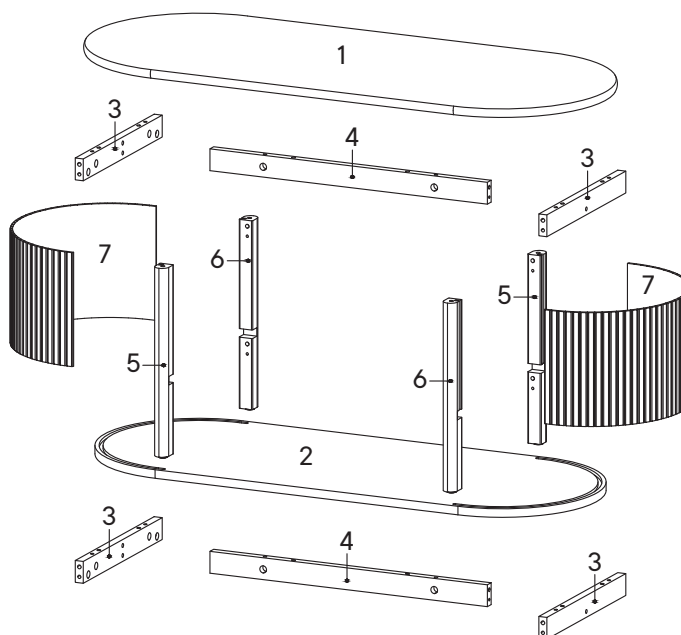
Do not over-tighten screws and bolts to avoid stripping the hardware or cracking the item.

Assemble your item on a flat, carpeted area, with plenty of space to work. This will prevent damage and scratches to your floors or the item while you're assembling the product.

Keep all components and packaging out of reach of children or animals to avoid risk of choking or suffocation.

Furniture components:

1	Top Board	x1
2	Bottom Board	x1
3	Support Board 1	x4
4	Support Board 2	x2
5	Leg 1	x2
6	Leg 2	x2
7	Bar Side	x2



Provided hardware:

A		Cam Bolt Ø6 x 35 mm	x20
B		Cam Lock Ø15 mm	x20
C		Wood Dowel Ø8 x 30 mm	x28
D		Screw M 7 x 50 mm	x4
E		Allen Key	x2
F		Stopper	x2
G		Screw Cap Ø15 mm	x20
H		Rubber	x2

What you need:



Phillips



Phillips Head Screwdriver

Wait!

Missing parts or hardware? Need assistance?
Contact us before returning your item. We're here to help!
609.256.9000 • cs@modway.com

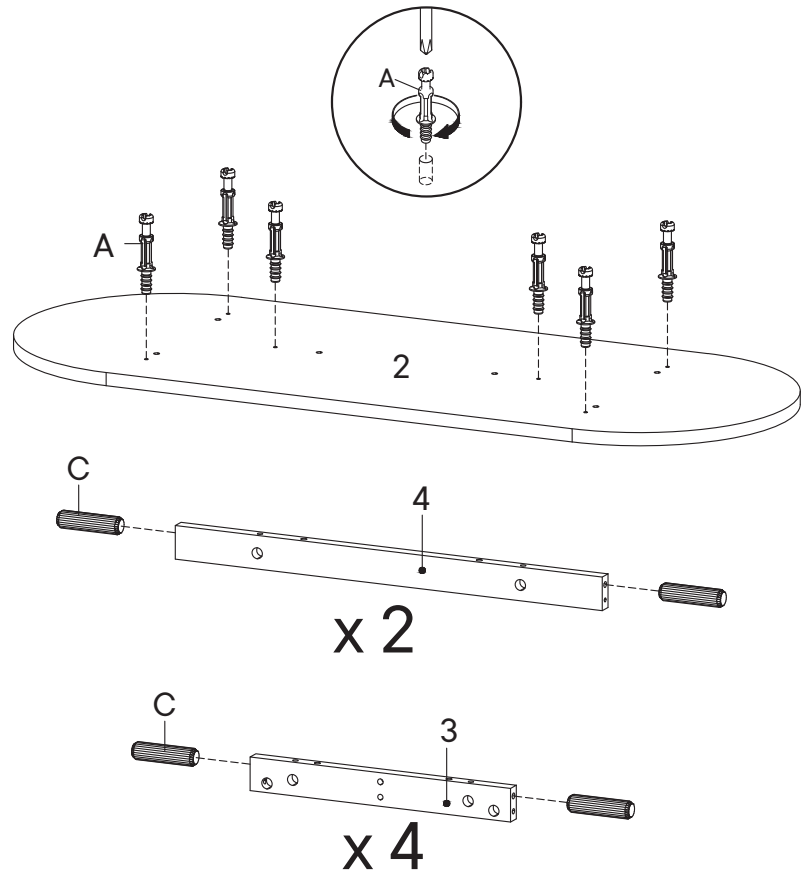
Step 1

HARDWARE

- A** Cam Bolt Ø6 x 35 mm x6
- C** Wood Dowel Ø8 x 30 mm x12

COMPONENTS

- 2** Bottom Board x1
- 3** Support Board 1 x4
- 4** Support Board 2 x2



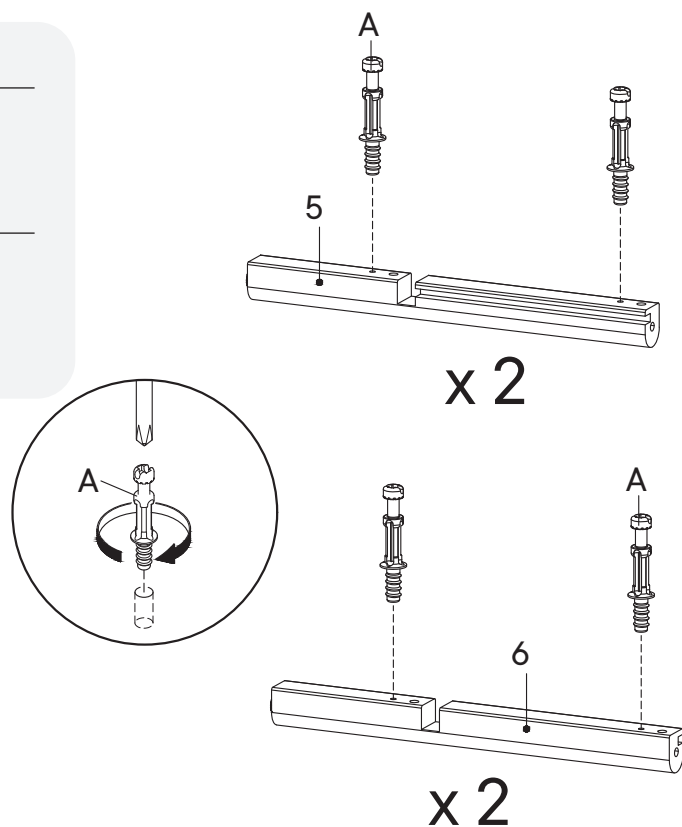
Step 2

HARDWARE

- A** Cam Bolt Ø6 x 35 mm x8

COMPONENTS

- 5** Leg 1 x2
- 6** Leg 2 x2



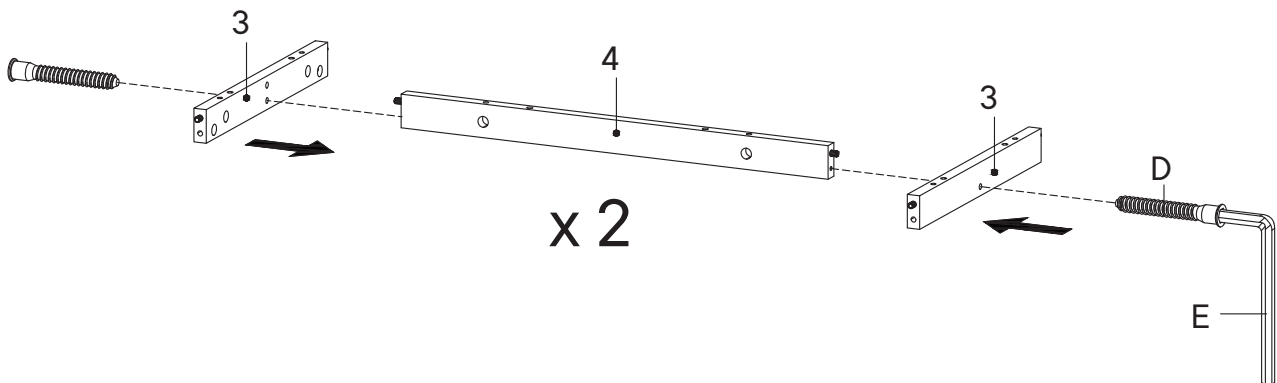
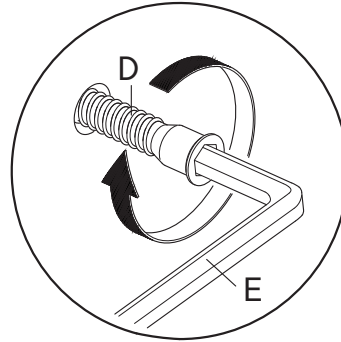
Step 3

HARDWARE

- D** Screw M 7 x 50 mm x4
- E** Allen Key x1

COMPONENTS

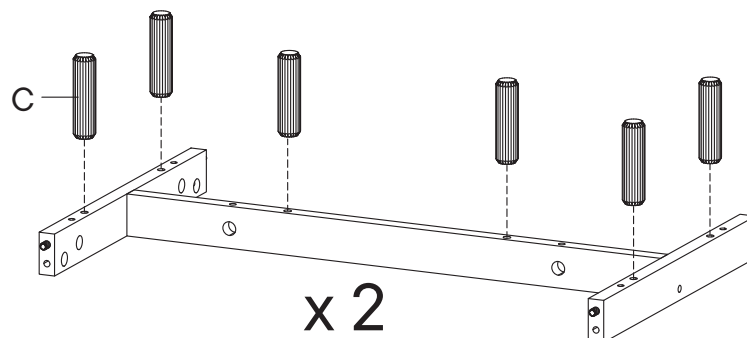
- 3** Support Board 1 x4
- 4** Support Board 2 x2



Step 4

HARDWARE

- C** Wood Dowel Ø8 x 30 mm x12



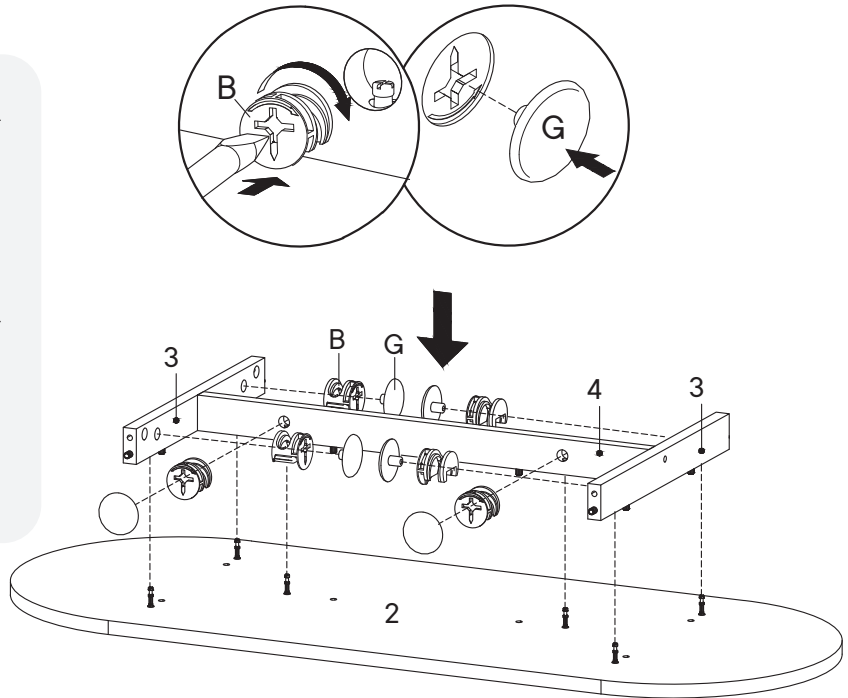
Step 5

HARDWARE

- | | | |
|----------|------------------|----|
| B | Cam Lock Ø15 mm | x6 |
| G | Screw Cap Ø15 mm | x6 |

COMPONENTS

- | | | |
|----------|-----------------|----|
| 2 | Bottom Board | x1 |
| 3 | Support Board 1 | x2 |
| 4 | Support Board 2 | x1 |



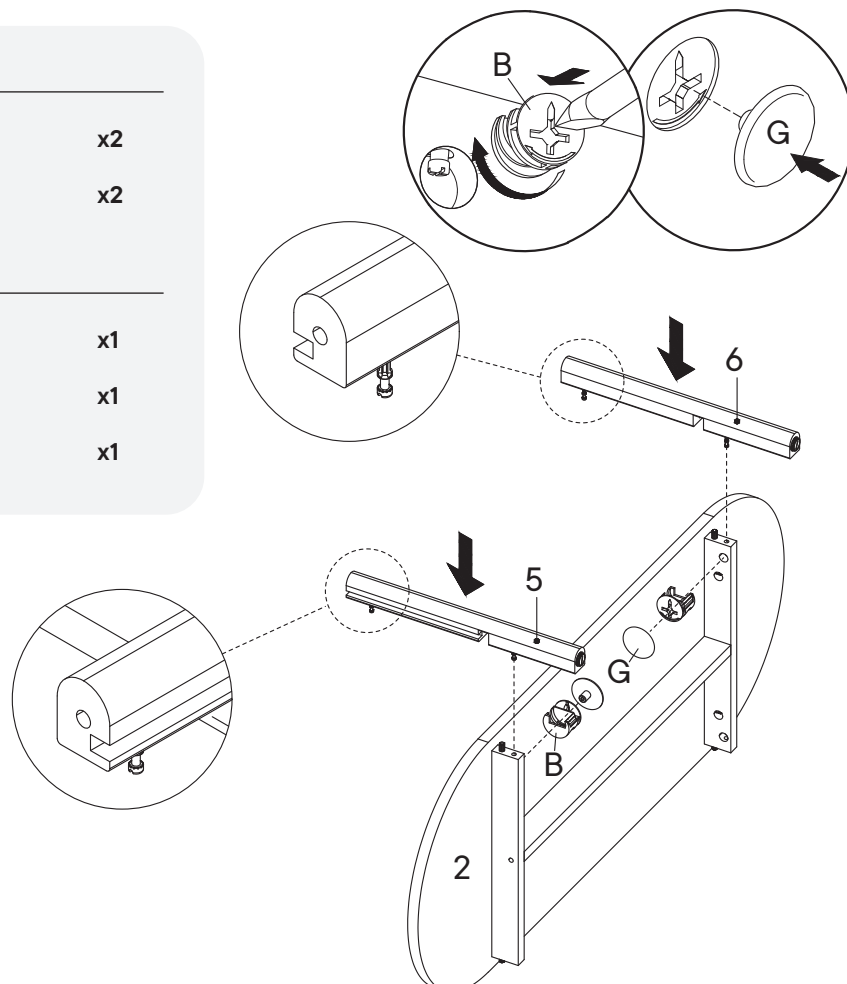
Step 6

HARDWARE

- | | | |
|----------|------------------|----|
| B | Cam Lock Ø15 mm | x2 |
| G | Screw Cap Ø15 mm | x2 |

COMPONENTS

- | | | |
|----------|--------------|----|
| 2 | Bottom Board | x1 |
| 5 | Leg 1 | x1 |
| 6 | Leg 2 | x1 |



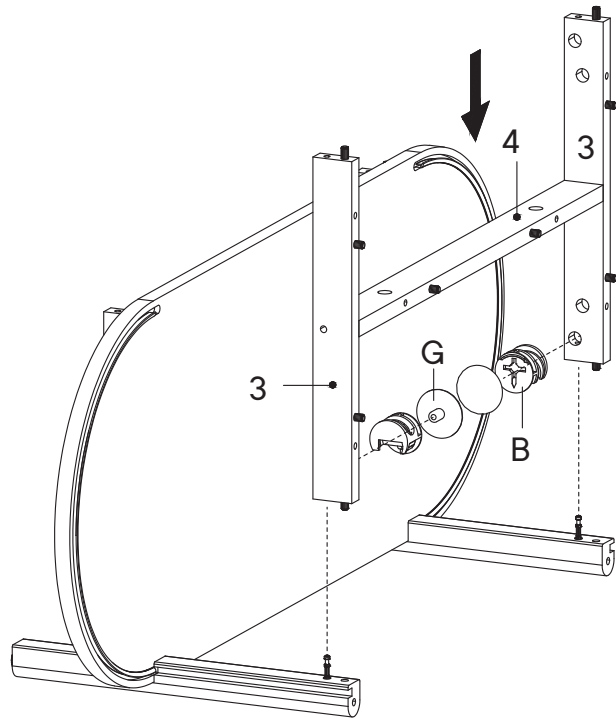
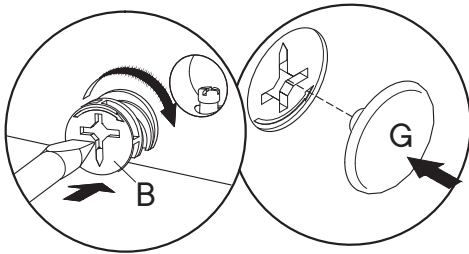
Step 7

HARDWARE

- B** Cam Lock Ø15 mm x2
- G** Screw Cap Ø15 mm x2

COMPONENTS

- 3** Support Board 1 x2
- 4** Support Board 2 x1



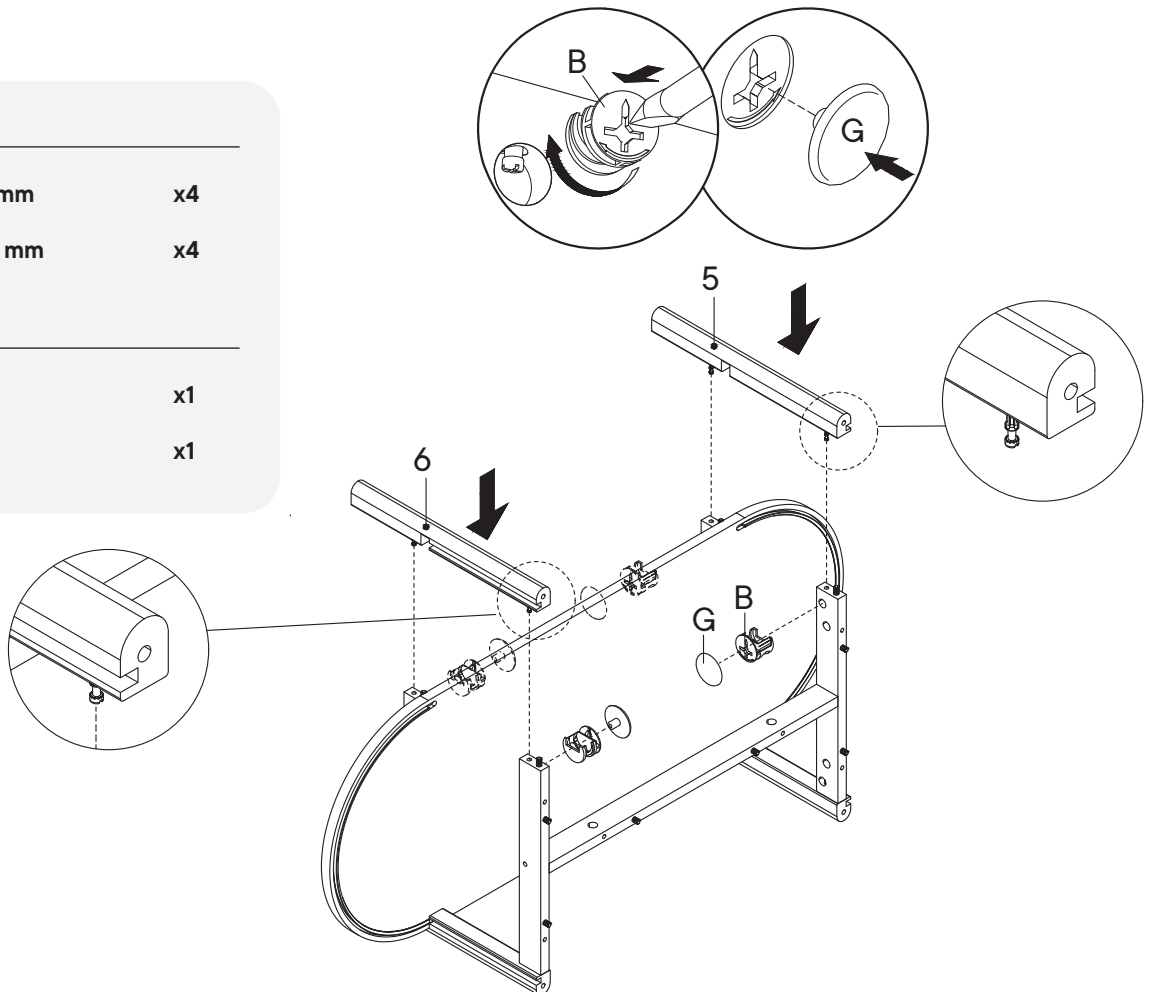
Step 8

HARDWARE

- B** Cam Lock Ø15 mm x4
- G** Screw Cap Ø15 mm x4

COMPONENTS

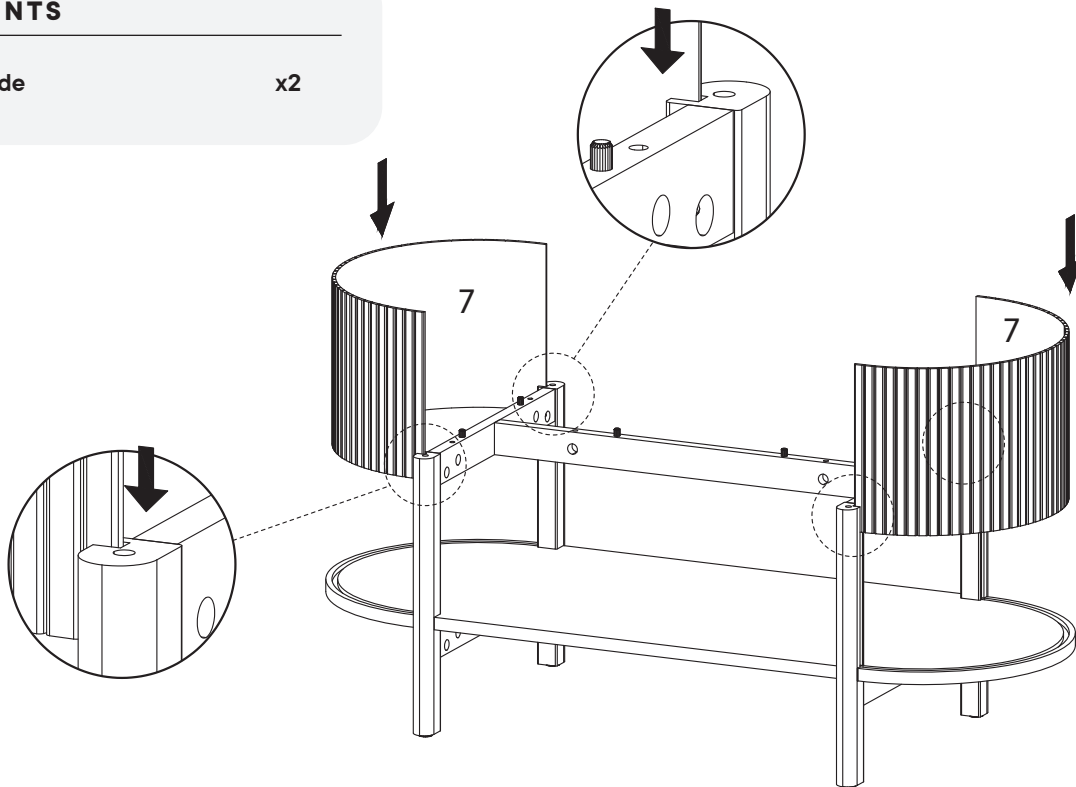
- 5** Leg 1 x1
- 6** Leg 2 x1



Step 9

COMPONENTS

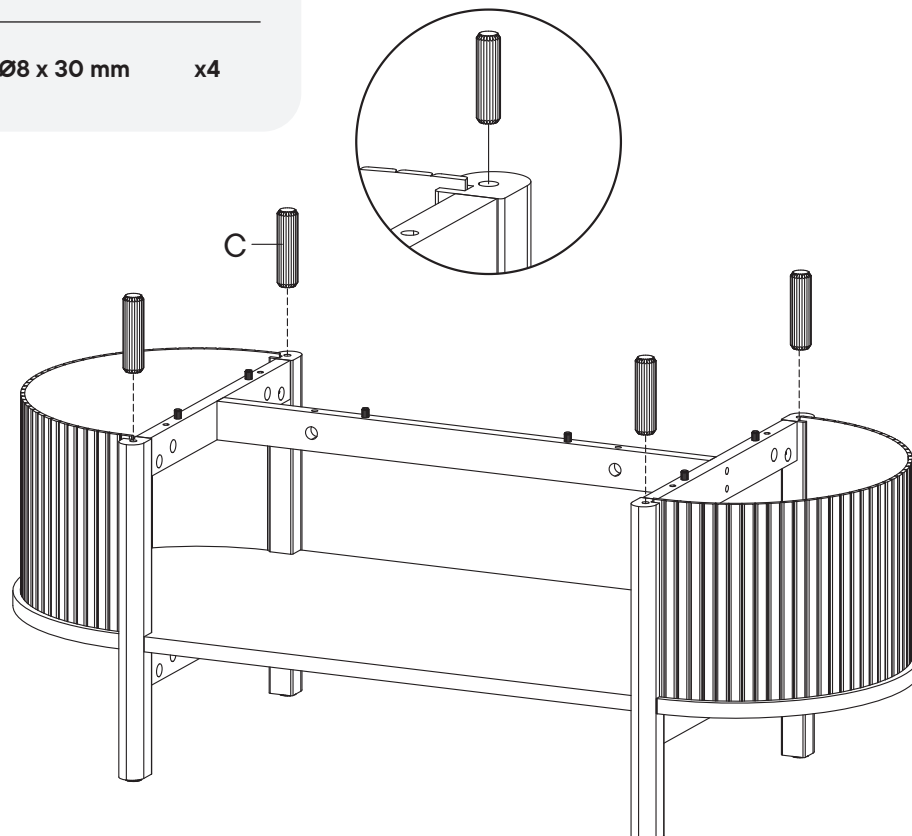
7 Bar Side x2



Step 10

HARDWARE

C Wood Dowel Ø8 x 30 mm x4



Step 11

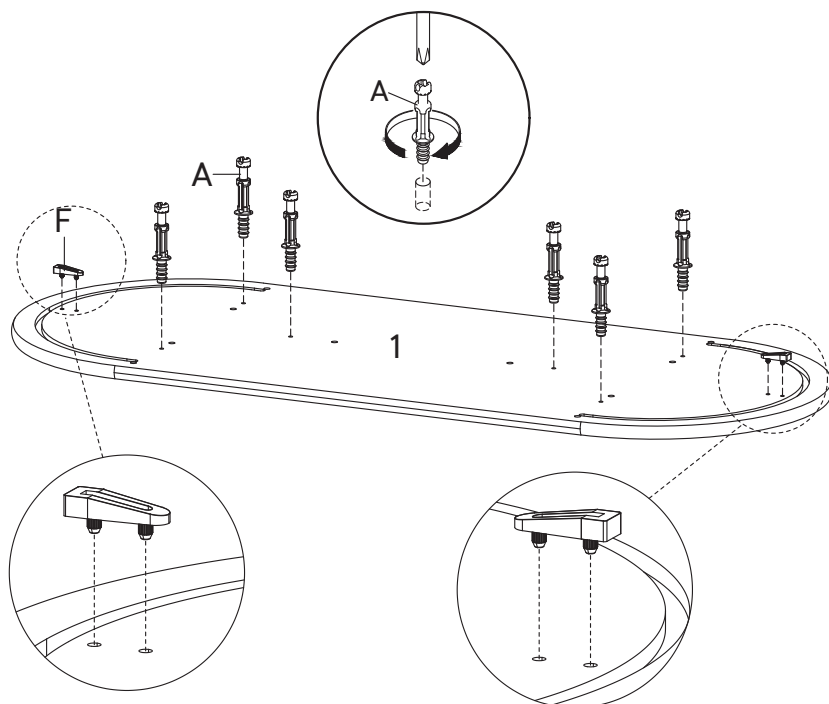
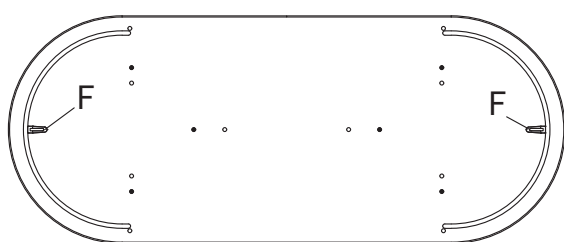
HARDWARE

A Cam Bolt Ø6 x 35 mm x6

F Stopper x2

COMPONENTS

1 Top Board x1



Step 12

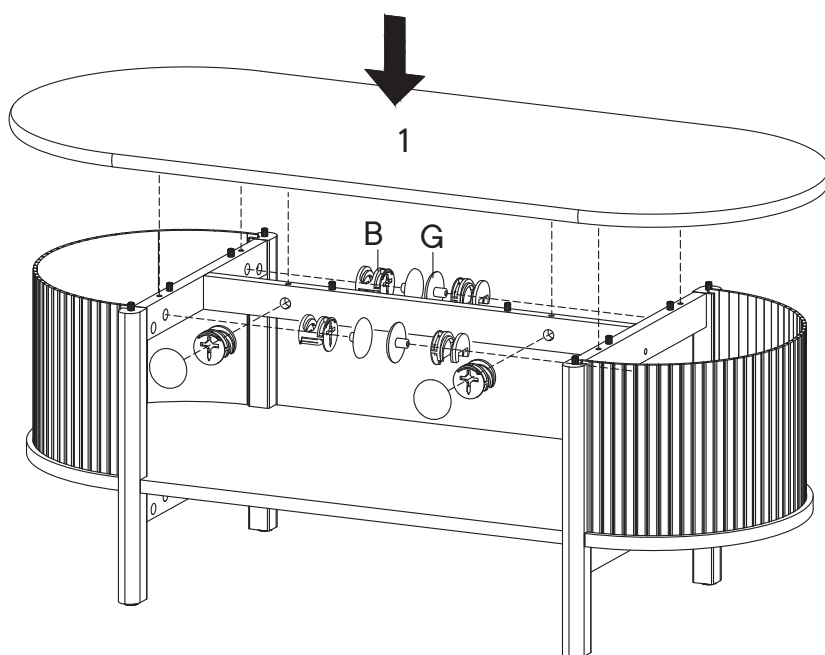
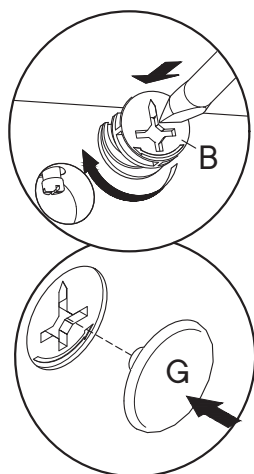
HARDWARE

B Cam Lock Ø15 mm x6

G Screw Cap Ø15 mm x6

COMPONENTS

1 Top Board x1



Step 13

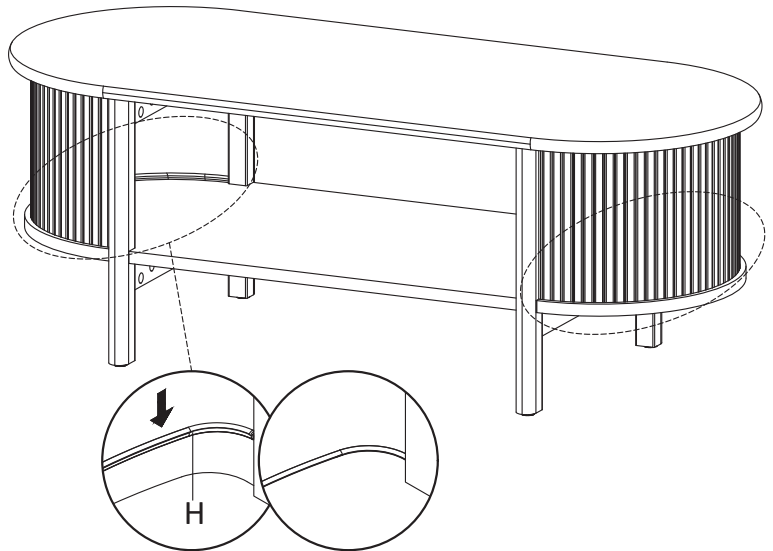
OPTIONAL

HARDWARE

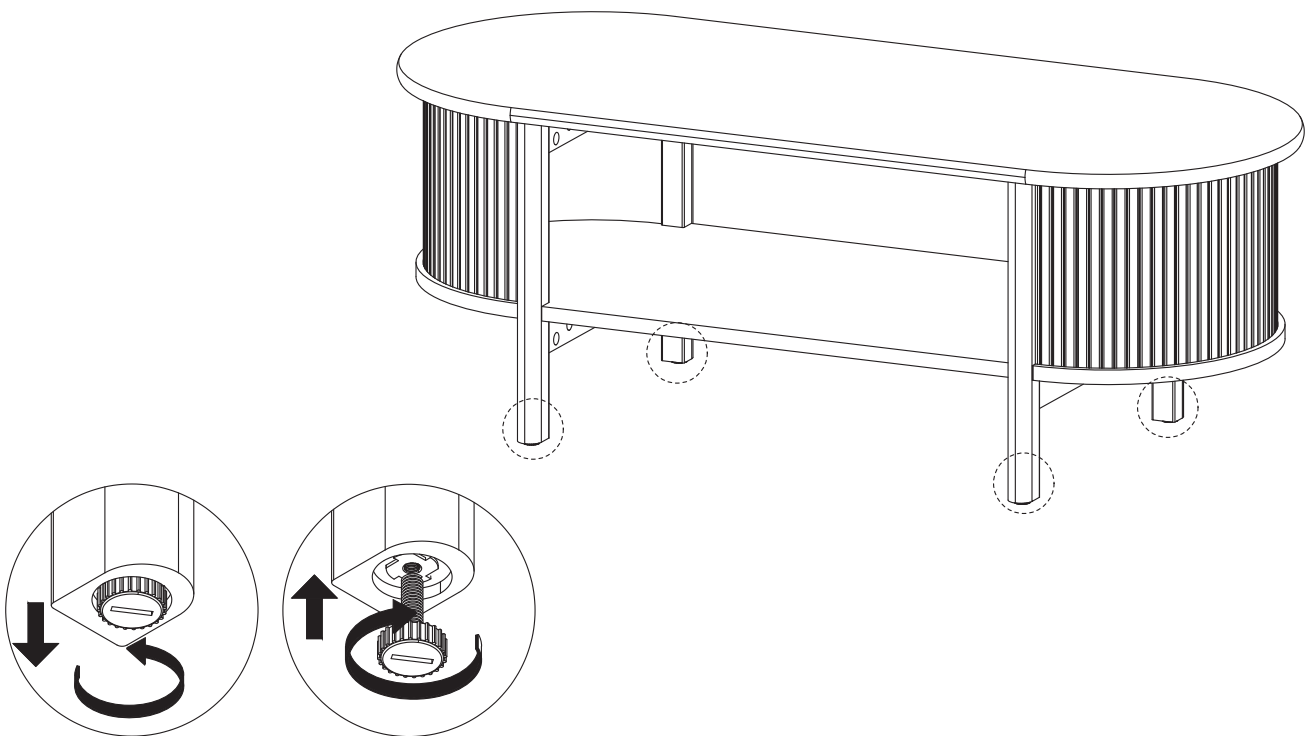
H Rubber

x2

Note :
Put rubber on the
inside



Step 14



Great job!

Coffee Table assembly is complete.

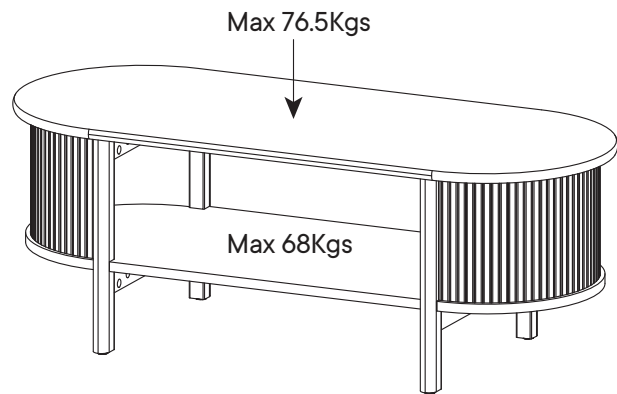
♥ CARING FOR YOUR ITEM

Indoor use only.

Not contract grade.

Clean using a non-abrasive cloth and a mild cleaner.

Never use harsh chemicals, as they could damage the finish or integrity of the item.



CONNECT WITH US!

Tag us **@modway_furniture** and **#modway** for a chance to be featured.