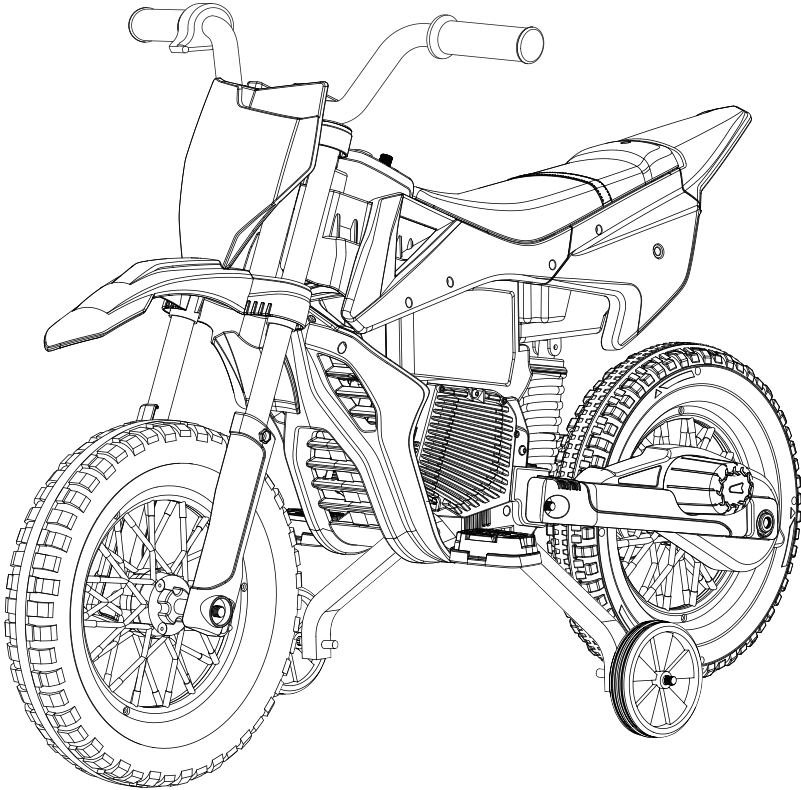


# Children's Toy Motorcycle

## BATTERY POWERED RIDE-ON



## Owner's Manual with Assembly Instructions

Styles and colo(u)rs may vary.  
Made in China.

The owner's manual contains important safety information as well as assembly, use and maintenance instructions.

The Ride-on Car must be assembled by an adult who has read and understands the instructions in this manual.

Keep the package away from children and dispose of properly before use.

**Keep this manual for future reference.**

On the purchase of your new Ride-On.

This ride-on will provide your child with many miles of riding enjoyment. To help ensure a safe ride we ask you to please read this manual carefully, and keep it for future reference.

Please follow the recommendations in this manual, they are designed to improve the safety and operation of your ride-on car and it's rider.

## SPECIFICATIONS:

<b>Battery</b>	12V4.5AH *1	12V7AH *1
<b>Charger</b>	12V500mA	12V1000mA

**Suitable age:** 37-96 months

**Load Capacity:** Under 30kg

**Speed:** 3-5km/h

**Size of ride-on car:** 107 \* 56 \* 70 CM

**Power way:** Charging type

**Charge time:** 8-12 hours

### **WARNING!**

- **CHOKING HAZARD** - Small parts. Not suitable for children under 36 months. The product contains small parts, keep children away when assembling.
- **ADULT ASSEMBLY REQUIRED.**
- Always remove protective material and poly bags and dispose before assembly.
- Protective equipment should be worn. Always wear shoes and sit in the seat when operating the vehicle.
- Only drive on level ground. Never use on the lawn.
- Never leave a child unattended.
- Keep your hands, hair, and clothes away from moving parts.

### **SAFETY**

The following safety hazards may result in serious injury or death:

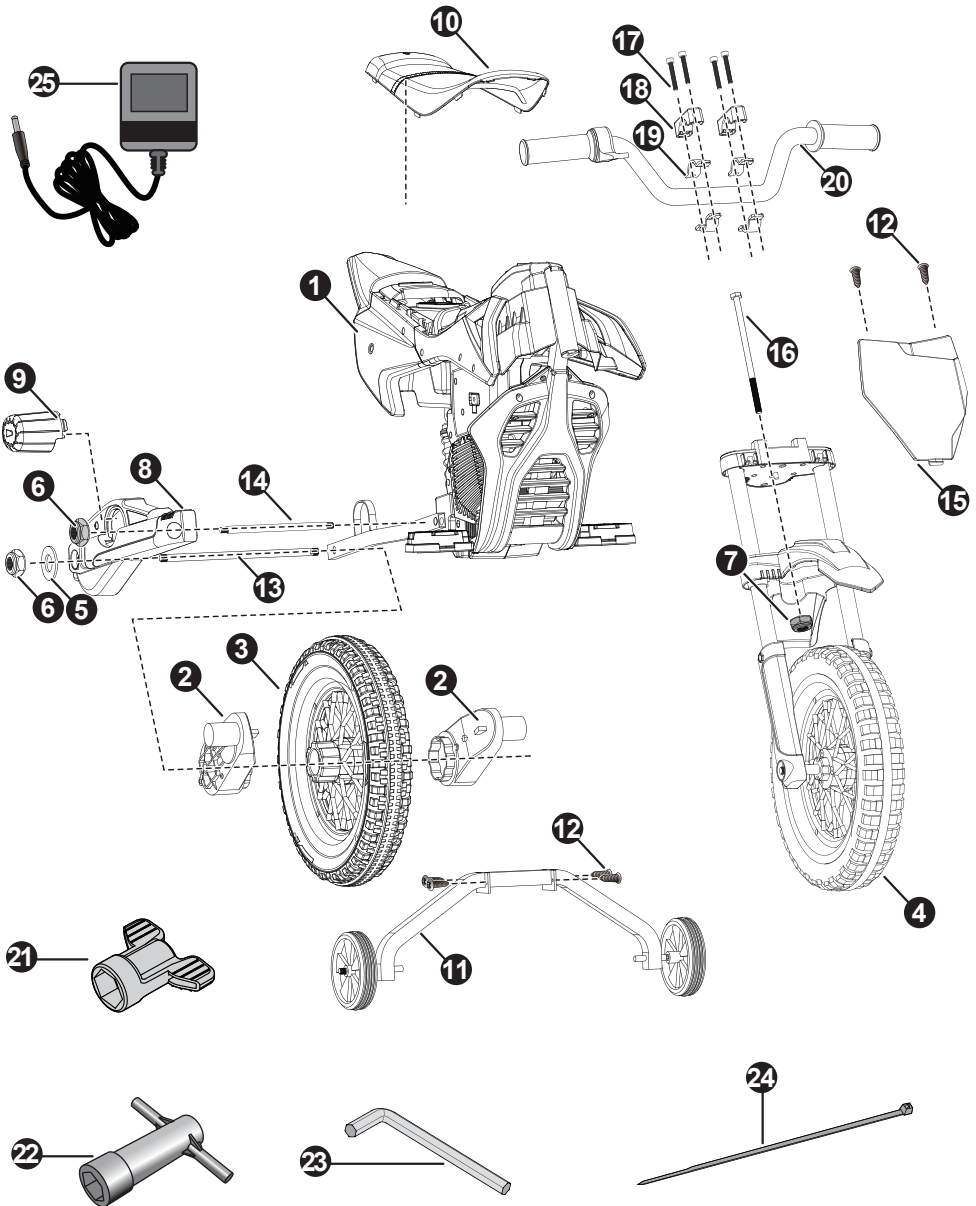
- Never leave child unattended. Direct adult supervision is required. Always keep child in view when child is in vehicle.
- To reduce the risk of injury, adult supervision is required. Never use in roadways, near motor vehicles, on or near steep inclines or steps, swimming pools or other bodies of water, always wear shoes, and never allow more than 1 rider.
- Never use in unsafe conditions such as snow, rain, loose dirt, mud, sand, or gravel, otherwise may result in an unexpected accident such as tipping over, and could damage the electrical system or battery
- Not to be used in traffic.
- This toy should be used with caution since skill is required to avoid falls or collisions causing injury to the user or third parties.
- This toy is unsuitable for children under 36 months due to its maximum speed; Maximum user weight is 30kg.
- This toy has no brake.

### **BATTERY INFORMATION**

- Non-rechargeable batteries are not to be recharged.
- Rechargeable batteries are to be removed from the toy before being charged.
- Rechargeable batteries are only to be charged under adult supervision.
- Different types of batteries or new and used batteries are not to be mixed.
- Batteries are to be inserted with the correct polarity.
- Exhausted batteries are to be removed from the toy.
- The supply terminals are not to be short-circuited.

# Parts Diagram | 3

HINT: Some parts shown are assembled on both sides of vehicle



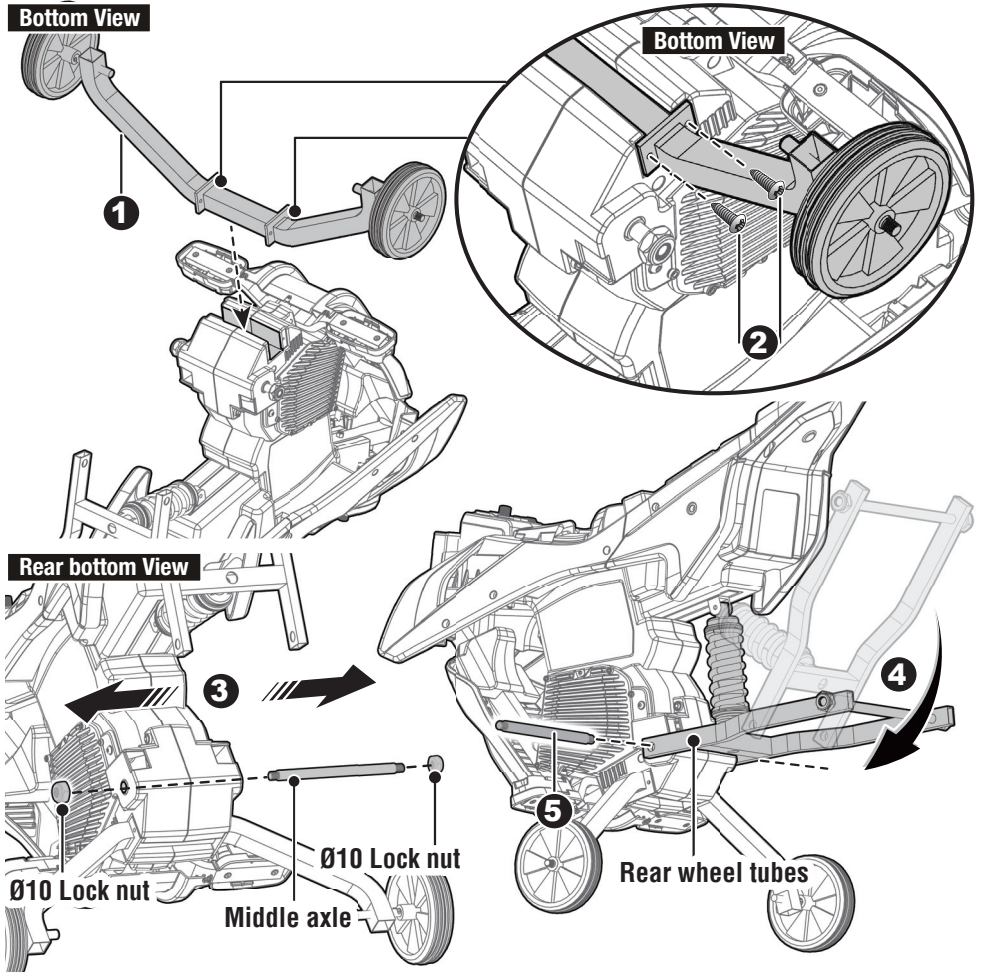
**Parts List** | **4**

<b>PART NO.</b>	<b>PART NAME</b>	<b>Q'ty (pcs)</b>	<b>REMARKS</b>
1	Vehicle body	1	
2	Gear box	2	
3	Rear wheel	1	
4	Front wheel assembly	1	
5	Ø10 washer	2	Placed on the vehicle body
6	Ø10 lock nut	4	Placed on the vehicle body
7	Ø8 lock nut	1	Placed on the front wheel assembly
8	Rear tube cover	2	Left and right
9	Motor hood	2	Left and right
10	Seat	1	
11	Side wheel	1	
12	Ø4x12 roud head screw	6	Placed in the assembly package
13	Rear axle	1	Placed on the vehicle body
14	Middle axle	1	Placed on the vehicle body
15	Faceguard	1	
16	M8x170 bolt	1	Placed on the front wheel assembly
17	M6x40 socket head screw	4	Placed on the front wheel assembly
18	Handlebar clamp cover	2	Placed on the front wheel assembly
19	Handlebar clamp	4	Placed on the front wheel assembly
20	Handlebar	1	
21	Ø10 spanner	2	Placed in the assembly package
22	Ø8 spanner	1	Placed in the assembly package
23	M6 hex wrench	1	Placed in the assembly package
24	Cable tie	2	Placed in the assembly package, 1pc for spare
25	Charger	1	

**Assembly tools required (not included):**

Screwdriver

## Attach the Side Wheel | 5

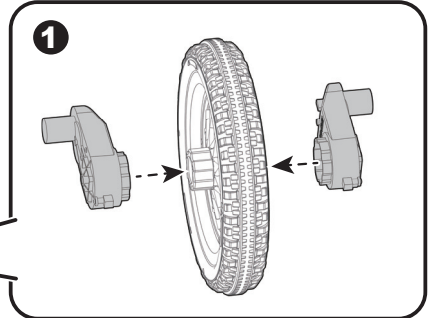
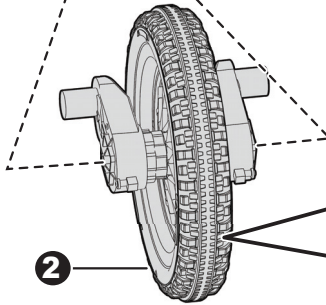
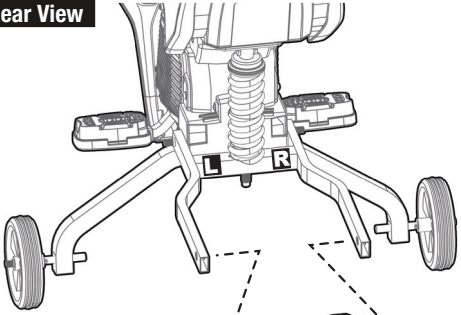


Turn the vehicle body upside down.

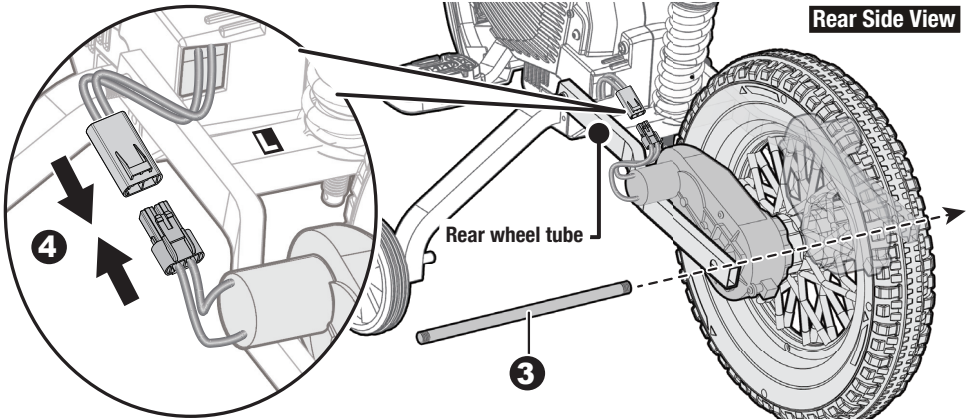
1. Fit the side wheel to the groove at the bottom of the vehicle body.
2. Insert two  $\text{Ø}4 \times 12$  round head screws and tighten with a screwdriver on each side.
3. Turn the vehicle body upright. Remove the  $\text{Ø}10$  lock nuts\*2 and middle axle from the vehicle body.
4. Turn the rear wheel tubes down until the holes in the rear wheel tubes align with the holes in the body.
5. Passes the middle axle you removed in step 3rd through the hole in one side of rear wheel tubes, the hole in vehicle body, and out through the hole in other side of rear wheel tubes.

# Attach the Rear Wheels (1) | 6

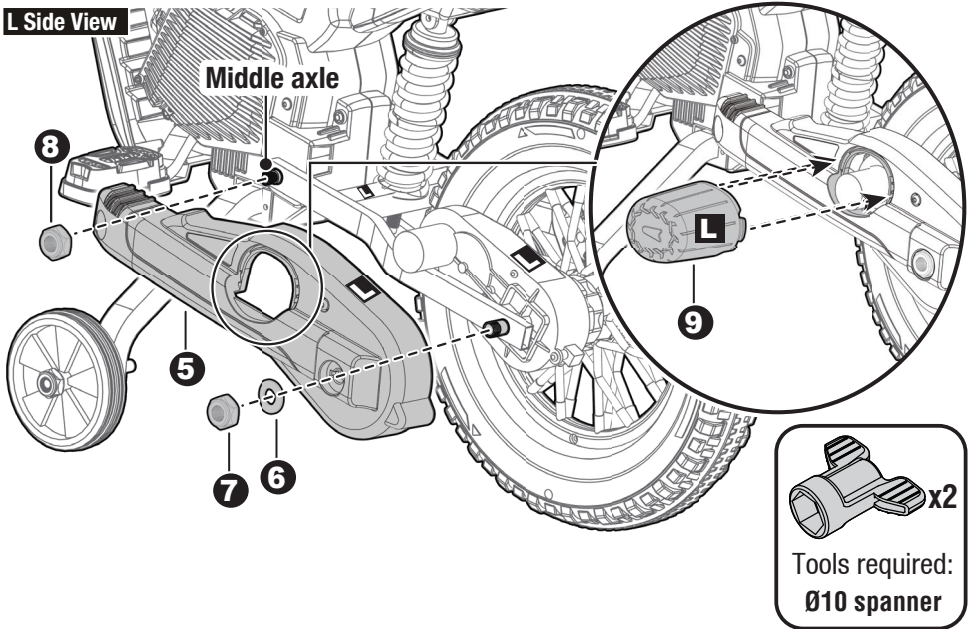
Rear View



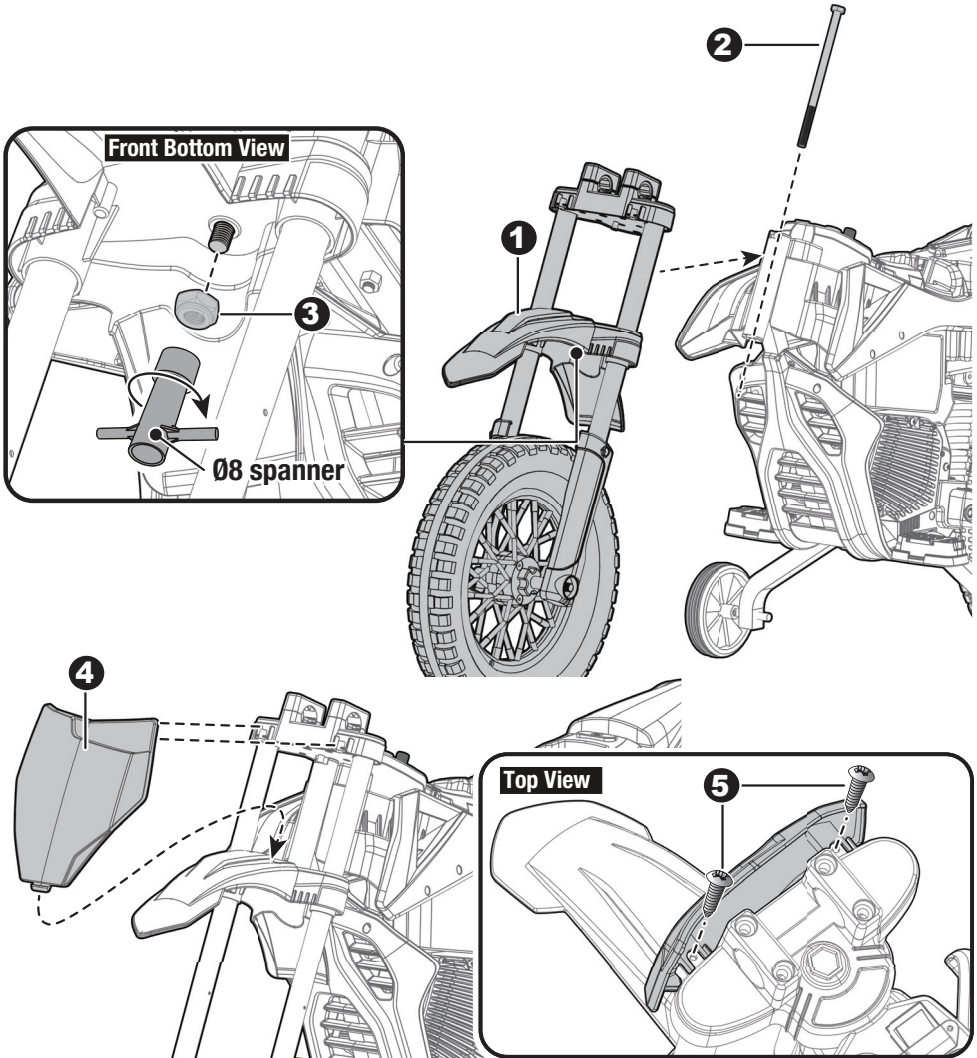
Rear Side View



1. Fit the two gear boxes against either side of the rear wheel, as shown in the figure.
- 2-3. Fit the gear boxes and rear wheel to the rear wheel tubes, and make the motor on the gearbox lie on the rear wheel tube. Then insert the rear axle through the hole in the rear wheel tube, and through the two gearboxes and the rear wheel, finally pass through the hole in the rear wheel tube on the other side. **This step will be much simpler if you ask for a helper.**
4. Plug the connector on the motor into the connector from the vehicle body on each side.

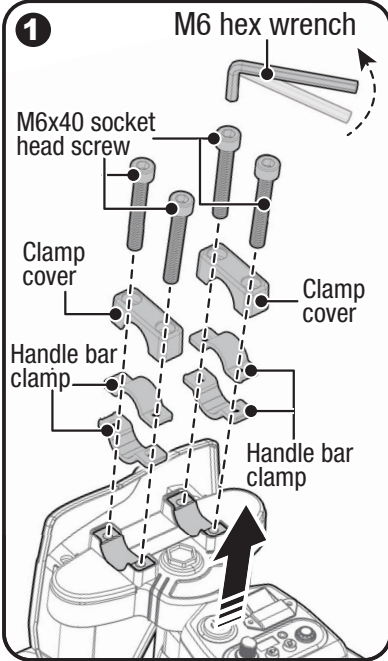


5. Fit the tube cover to the side of the vehicle body. The tube cover labeled “R” need to fit the “R” side of the vehicle body, the tube cover labeled “L” need to fit the “L” side of the vehicle body.
- 6-7. Fit a Ø10 washer onto the rear axle. Tighten a Ø10 locknut to the end of the rear axle with a Ø10 spanner.
8. Tighten a Ø10 locknut to the end of the middle axle with a Ø10 spanner.
- Repeat above the steps for assemble the other tube cover. **An extra Ø10 spanner has been provided to hold the Lock Nut on the other side of the rear axle (middle axle) while tightening the Lock Nut on the other side.**
9. Insert the tabs on the motor hood into the holes in the tube cover. R to R, L to L.  
Repeat for the other motor hood.

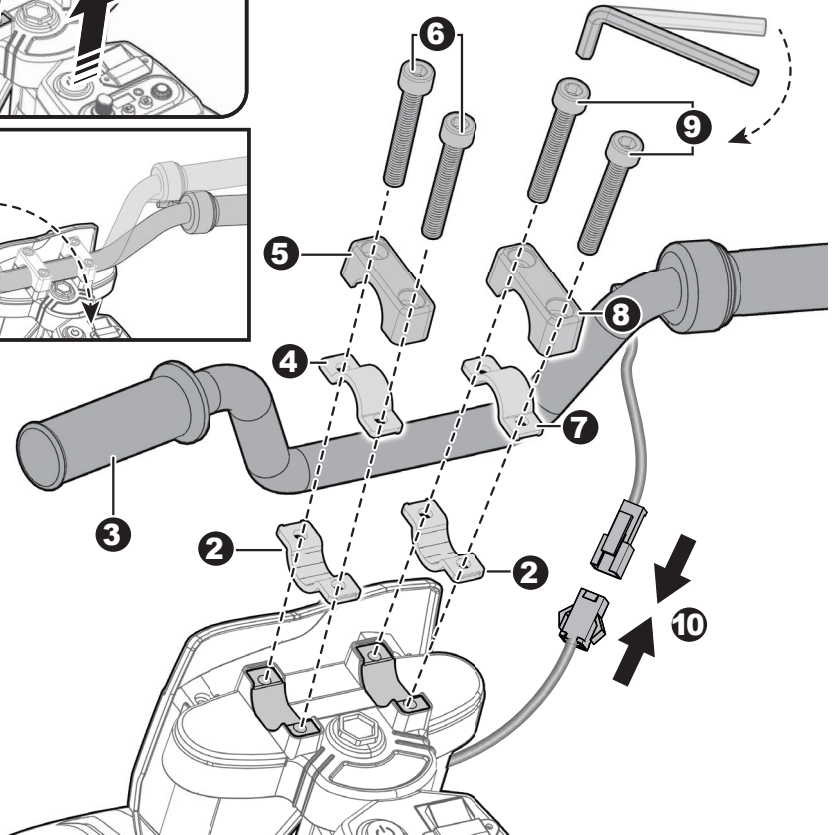
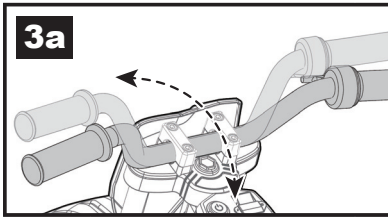


- 1-2. Remove the M8x170 bolt and Ø8 lock nut from the front fork. Fit front fork to the vehicle body. Insert the M8x170 bolt through into the hole at the top of the front fork, the holes in the vehicle body, and out through the hole at the bottom of the front fork.
3. Tighten a Ø8 lock nut to the end of the M8x170 bolt with a Ø8 spanner.
4. Insert the tab at the bottom of the faceguard into the slot on the top of the front fender,
5. Aligns the screw holes in the faceguard with the screw holes in the front fork, insert two Ø4x12 screws and tighten with a screwdriver.

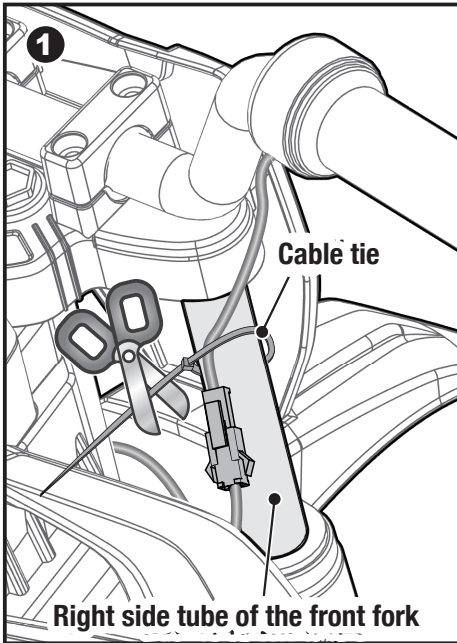
# Attach the Handle Bar | 9



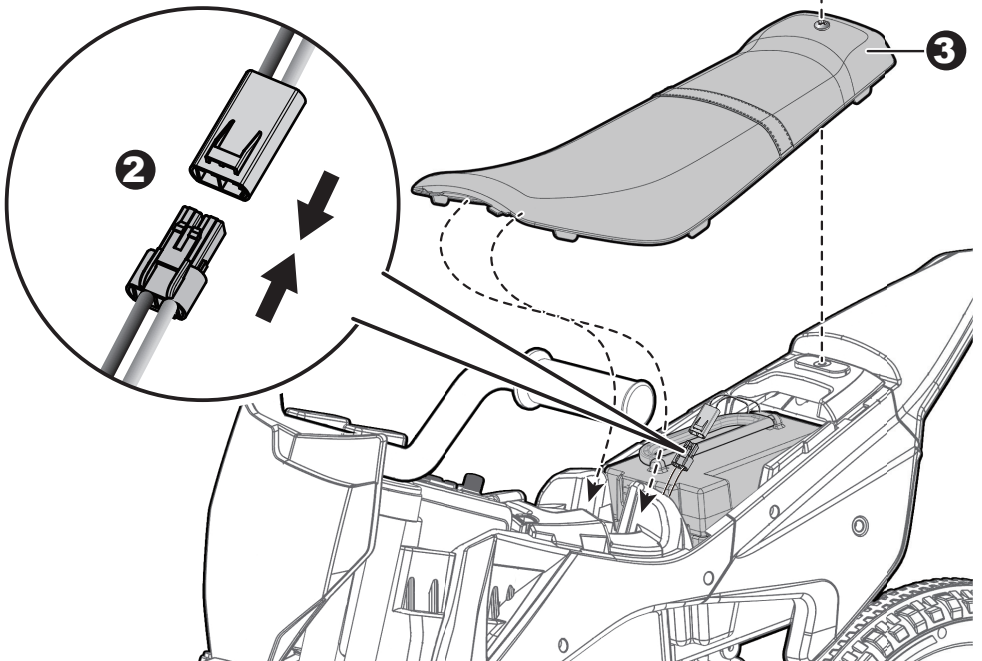
1. Remove M6x40 socket head screws\*4, clamp covers\*2, handle bar clamps\*4 from the front fork with a M6 hex wrench.
2. Fit two handle bar clamps (Arch side down) to the front fork.
3. Fit the handle bar against both handle bar clamps.  
**NOTE: The handlebar is adjustable, adjust it to the angle that suits your child as fig 3a**
4. Fit a handlebar clamp (Arch side up) to the handle bar,
5. Cover the handle bar clamp with a clamp cover.
6. Insert and tighten two M6x40 socket head screw with a hex wrench.
- 7-9. Repeat the steps 4-6 to secure the other side.
10. Plug the throttle connector on the handle bar into the connector from the vehicle body.

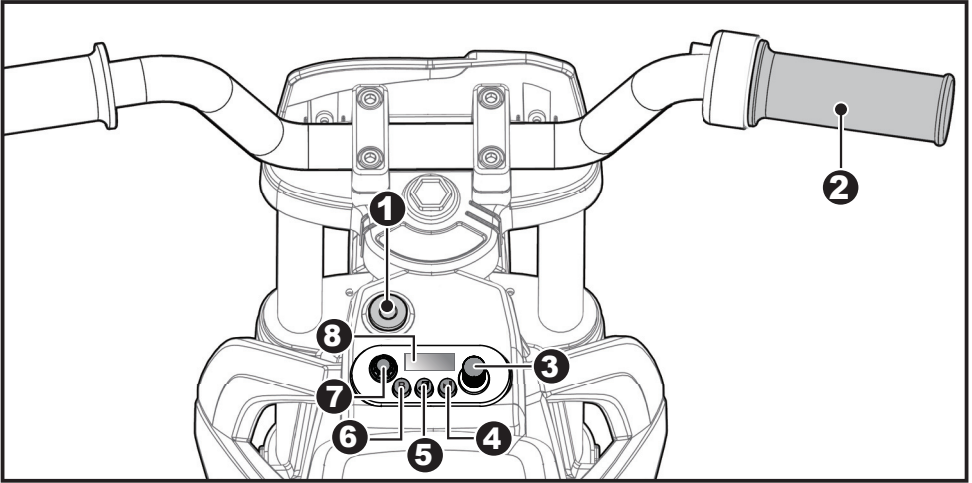


## Connect the Power Supply | 10



1. Use the cable tie to tie the plugged connectors to the right side tube of the front fork. Then cut off the excess part of the cable tie with scissors.
2. Plug the vehicle connector into the power connector on the battery.
3. Fit the tabs on the seat into the grooves on the vehicle body.
4. With a screwdriver tighten the M5x16 screw on the top of the seat into the hole in the vehicle.





**1. Power button:** Turns the product on and off.

**2. Throttle grip:**

- Twist the throttle grip, the product moves forward.
- Release the throttle grip, slow down the product until it stops.

**3. Volume knob:** Turn the audio player on and off, +/- the volume.

**4. Next**

**5. Music:** Press for music playing.

**6. Wireless connection.**

**7. Play / Pause**

**8. Battery indicators:** Check the power remaining of the battery, If only one indicator remains, the battery needs charging.

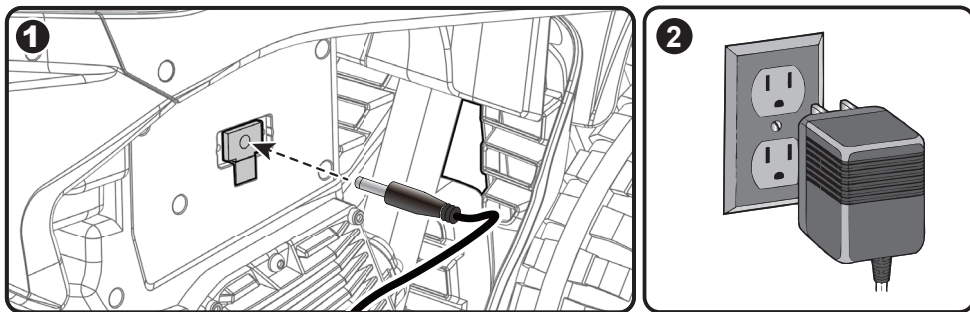
## IMPORTANT

- Always stop vehicle when changing the speed or direction to avoid damage the gears and motor.
- When not using, please turn the audio player off, avoid to reduce the battery life.

## **WARNING!**

- **ONLY an adult is allowed charge and recharge the battery!**
  - **This product with Charging Protection: when charging, all functions will be cut off.**
- The POWER SWITCH must be turned in OFF position when charging.
  - Before the first use, you should charge the battery for 4-6 hours. Do not recharge the battery for more than 10 hours to avoid overheating the charger.
  - When the vehicle begins to run slowly, recharge the battery.
  - After each use or once a month minimum recharge time as 8 to 12 hours, less than 20 hours at most.
  - Use only battery(ies) and charger specified by the manufacturer. Using another battery or charger may cause a fire or explosion. Do not use the battery or charger for any other product.
  - The battery indicators will tell you how much power is remaining in the battery. Make sure the product is stop! If there is only one indicator remains, recharge the battery.

### Charging Way I



1. Plug the charger port into the input socket (the socket is located on the Right side of the vehicle).
2. Plug the charger plug into a wall outlet. The battery will begin charging.

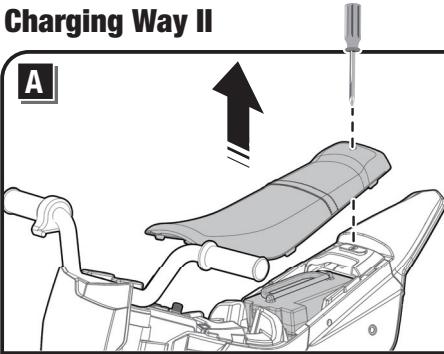
### Battery Disposal



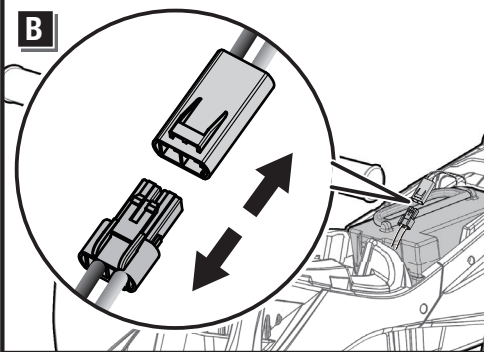
The battery will eventually lose the ability to hold a charge. Depending on the amount of use, and varying conditions, the battery should operate for one to three years.

Important! Recycle the dead battery responsibly. The battery contains lead acid (electrolyte) and must be disposed of properly and legally. It is illegal in most areas to incinerate lead acid batteries or dispose of them in landfills. Take it to a federal or state-approved lead acid battery recycler, such as local automotive battery retailer.

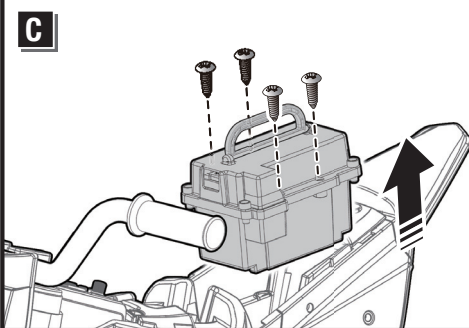
Do not throw the battery away with your regular household waste!

**Charging Way II**

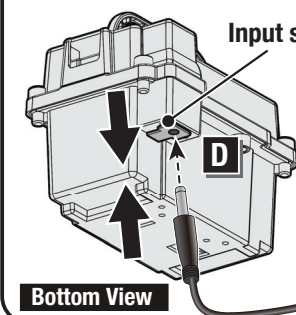
A: Use a screwdriver to loosen the screw on the top of the seat and remove the seat.



B: Unplug the red connectors from each other.



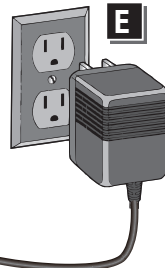
C. Loosen the four screws around the battery box with a screwdriver and lift the battery box up.



D. Place the battery box on a flat ground. Plug the charger port into the input socket on the battery box.

E. Plug the charger plug into a wall outlet. The battery will begin charging.

Input socket on the battery box



**Bottom View**

Problem	Possible Cause	Solution
Vehicle does not run	Battery low on power	Recharge battery.
	Thermal fuse has tripped	Reset fuse, see <Fuse>
	Battery connector or wires are loose	Check that the battery connectors are firmly plugged into each other. If wires are loose around the motor <b>contact your distributor please.</b>
	Battery is dead	Replace battery, <b>contact your distributor please.</b>
	Electrical system is damaged	<b>Contact your distributor please.</b>
	Motor is damaged	<b>Contact your distributor please.</b>
Vehicle does not run very long	Battery is under charged	Check that the battery connectors are firmly plugged into each other when recharging
	Battery is old	Replace battery, <b>contact your distributor please.</b>
Vehicle runs sluggishly	Battery low on power	Recharge battery, <b>contact your distributor please.</b>
	Battery is old	Replace battery, <b>contact your distributor please.</b>
	Vehicle is overload	Reduce weight on vehicle.
	Vehicle is being used in harsh conditions	Avoid using vehicle in harsh conditions, see <Safety>.
Vehicle needs a push to go forward	Poor contact of wires or connectors	Check that the battery connectors are firmly plugged into each other. If wires are loose around the motor, <b>contact your distributor please.</b>
	“Dead Spot” on motor	A dead spot means the electric power is not being delivered to the terminal connection and the vehicle needs repair. <b>Contact your distributor please.</b>
Difficult shifting from forward to reverse or vice-versa	Attempting to shift while the vehicle is motion	Completely stop the vehicle and shift, see <Use Your Ride-On>
Loud grinding or clicking noises coming from motor or gear box	Motor or gears are damaged	<b>Contact your distributor please.</b>
Battery will not recharge	Battery connector or adapter connector is loose	Check that the battery connectors are firmly plugged into each other.
	Charger not plugged in	Check that the battery charger is plugged into a working wall outlet.
	Charger is not working	<b>Contact your distributor please.</b>
Charger feels warm when recharging	This is normal and not a cause for concern	

Completely read through this manual and the troubleshooting guide table before calling. If you still need help resolving the problem **Contact your distributor please.**

- It is parents' responsibility to check main parts of the toy before using, Must regularly examine for potential hazard, such as the battery, charge, cable or cord, plug, screws are fastening enclosure of other parts and that in the event of such damage, the toy must not be used until that damage had been properly removed.
- Park the vehicle indoors or cover it with a tarp to protect it from wet weather.
- Recharge the battery after each use. Only an adult can handle the battery. Recharge the battery at least once a month when the vehicle raider is not being used.
- Do not wash the vehicle with a hose. Do not wash the vehicle with soap and water. Do not drive the vehicle in rainy or snowy weather. Water will damage the motor, electric system and battery.
- Clean the vehicle with a soft, dry cloth. To restore shine to plastic parts, use a non-wax furniture polish. Do not use car wax. Do not use abrasive cleaners.
- When not using, all the electrical source should be turn off. Turn off the power switch and disconnect the battery connection.

## **Fuse**

The battery features a thermal fuse with a reset fuse that will automatically trip and cut all power to the vehicle if the motor, electric system or battery is overloaded. The fuse will reset and power will be restored after the unit is turned OFF for 20 seconds and then turned ON again. If the thermal fuse trips repeatedly during normal use, the vehicle may need repair. **Contact your distributor please.**

To avoid losing power, follow these guidelines:

- Do not overload the vehicle.
- Do not tow anything behind the vehicle.
- Do not drive up steep slopes.
- Do not drive into fixed objects, which may cause the wheels to spin, causing the motor to overheat.
- Do not drive in very hot weather, components may overheat.
- Do not allow water or other liquids to come in contact with the battery or other electric components.
- Do not tamper with the electric system. Doing so may create a short, causing the fuse to trip.



**RISK OF FIRE. Do not bypass. Replace only with a new fuse.**