

USE AND MAINTENANCE

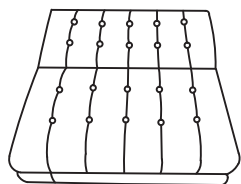
Use on level surfaces only

Because this product needs assembly, it is prone to working itself loose from time to time depending on the use. Please take the time to check that all connections are still tight and working properly

Only clean using a damp cloth and mild detergent, do not use bleach or abrasive cleaners.

Tufted Split Back Futon Sofa Bed

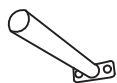
PART LIST



1 - Futon Assembly x1



2 - Front Leg x2



3 - Middle Leg x2



4 - Rear Leg x2

HARDWARE



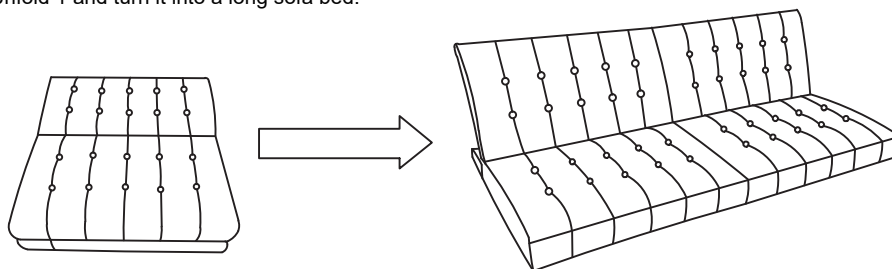
A - Bolt x8



B - Allen Wrench x1

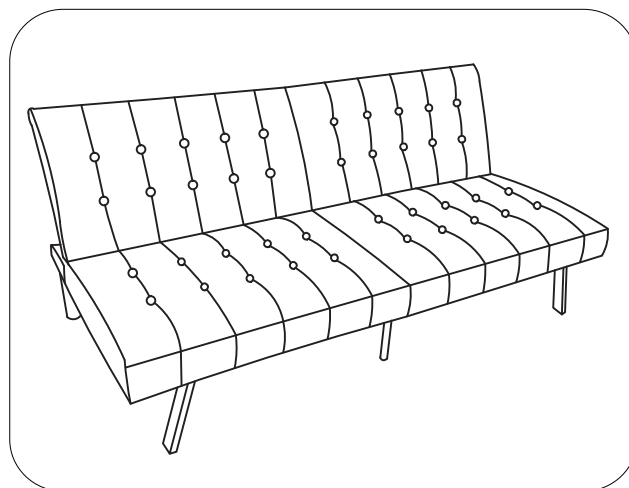
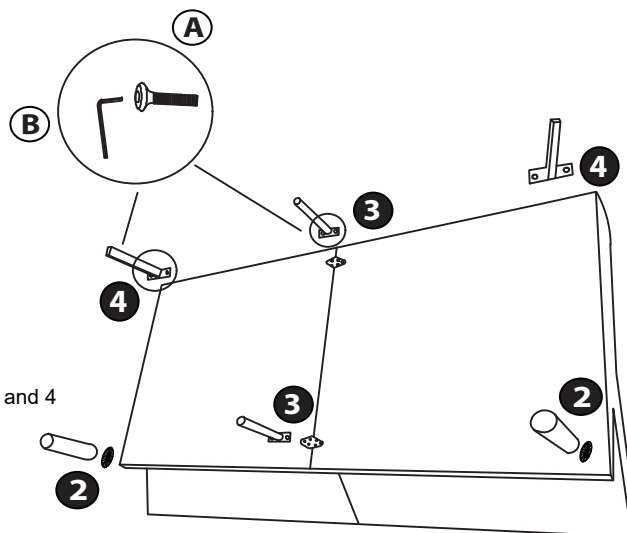
Assembly Instructions

- ① Unfold 1 and turn it into a long sofa bed.



- ② Select and lay flat 1 assembly and turn over upside down. Select 2 x2 and insert leg post into back hole in futon. Turn clockwise to hand tighten.

- ③ Select 3x2, 4x2 and A Bolts x4, Insert A Bolt into 3 Middle Leg and 4 Rear Leg, then through hole in 3 and 4 then mount 3 and 4 to part 1 Assembly. Ensure the leg orients to point outward for proper support.



Note:

To sleep - pull backrest forward until it clicks to release and then push backward to lay flat.

To Recline:

Lay flat to sleep, then pull up into desired recline position.

Congratulations! Setup of your new Futon is Complete!