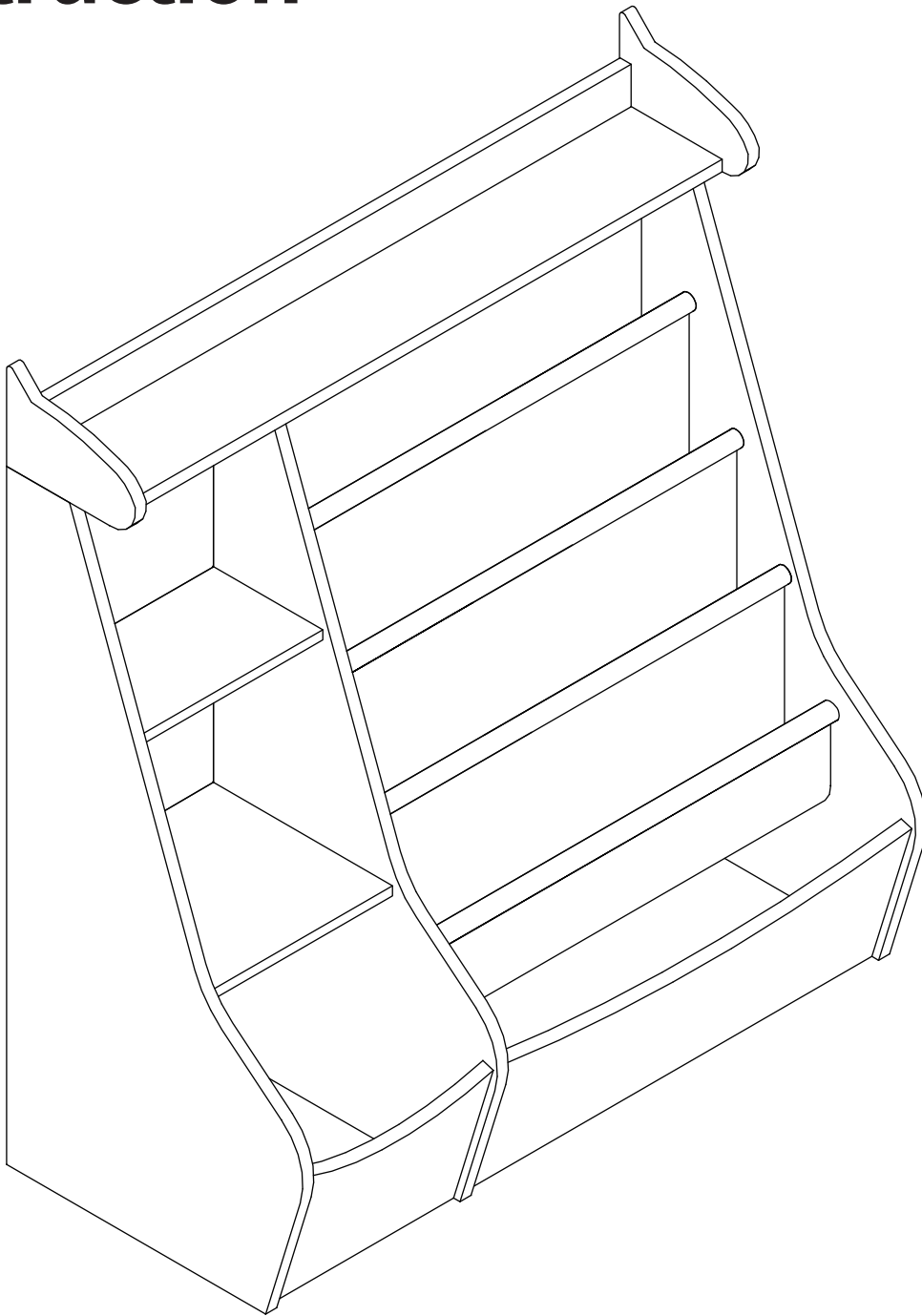


Bookshelf

Instruction



INSTRUCTION TIPS

CUSTOMER CARE

😊 **HAPPY**

If you are satisfied with our products, please share with your family and friends and leave your experience on our product pages.

😞 **NOT HAPPY**

Our friendly customer service team will work hard to make you smile.

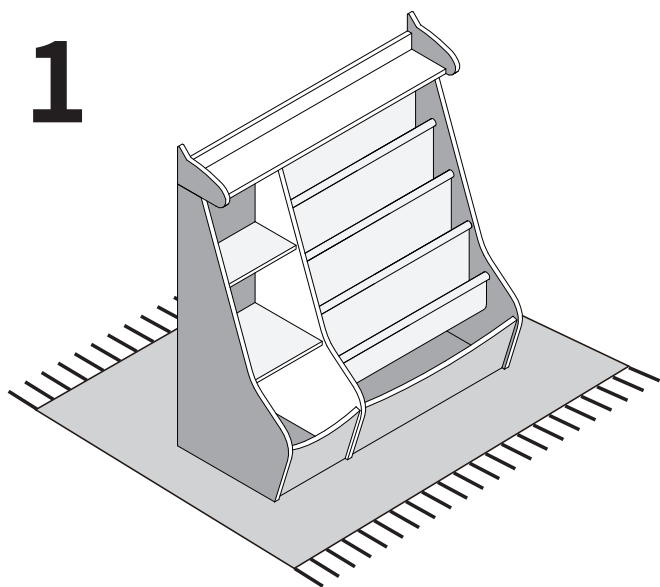
Customer Service Team: info@funfollow.net

RETURN/DAMAGE CLAIM INSTRUCTIONS:

Please send us photos of the damaged product and packaging. Upon discovering any damage, defects, or missing parts, we will promptly refund you or send a new replacement, except in cases of personal reasons.

We accept returns within 30 days without hesitation. If you need to return the product for personal reasons, you will be responsible for covering the delivery fee and order processing fee (please note that a 20% restocking fee based on the invoice price applies).

Please retain the original box for the return. Use our return label and refrain from returning the product without permission.





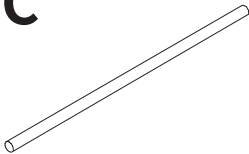
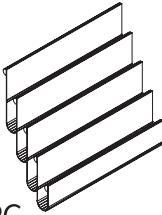
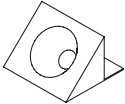
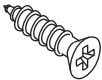

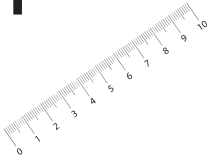
Before assembling, please be sure to put all the boards on a very clean and soft blanket or sheet, and do not put them next to sharp objects to avoid the boards being scratched or soiled.

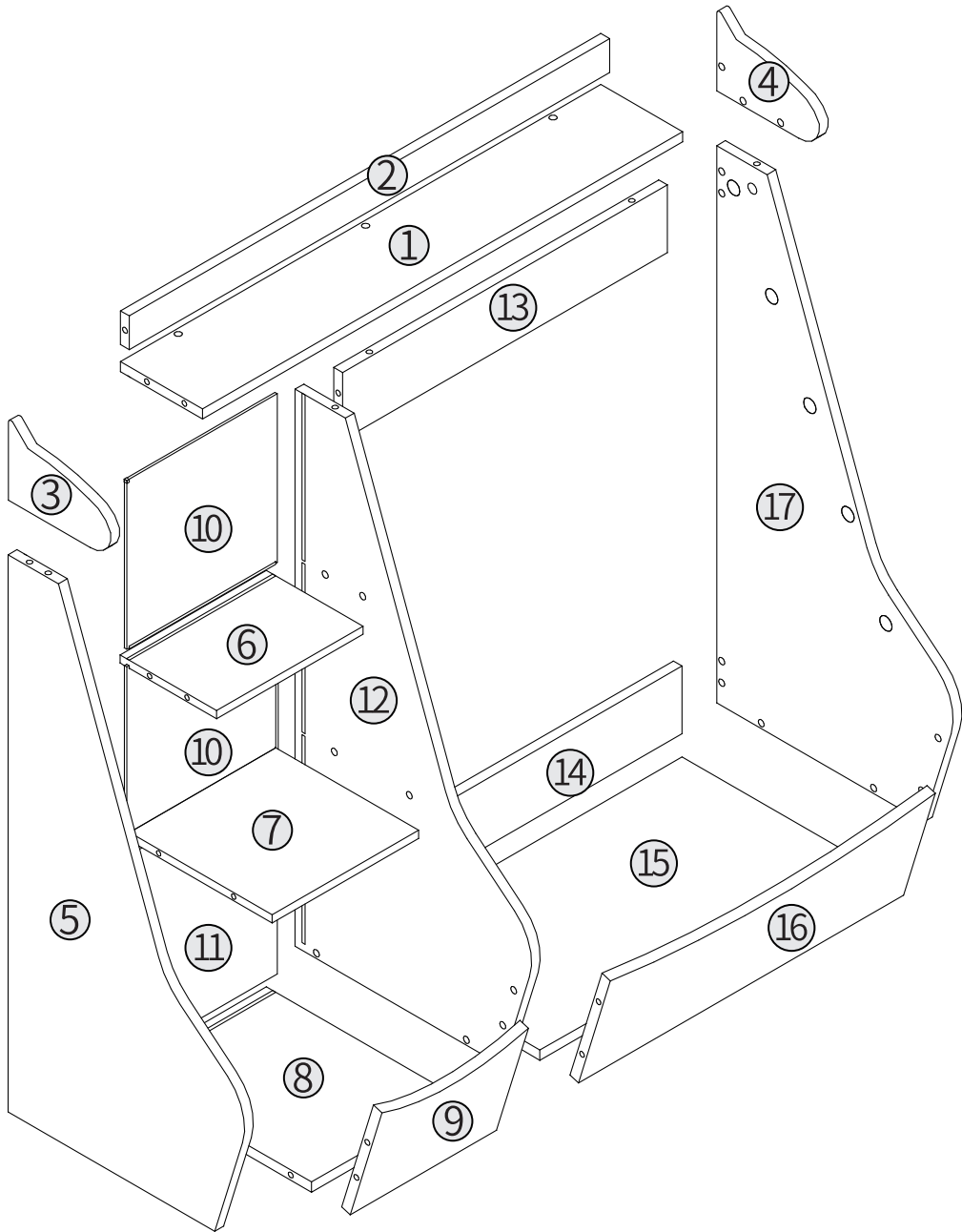


This product requires two people to work together for faster assembly.

INSTRUCTION

HARDWARE & PARTS LIST

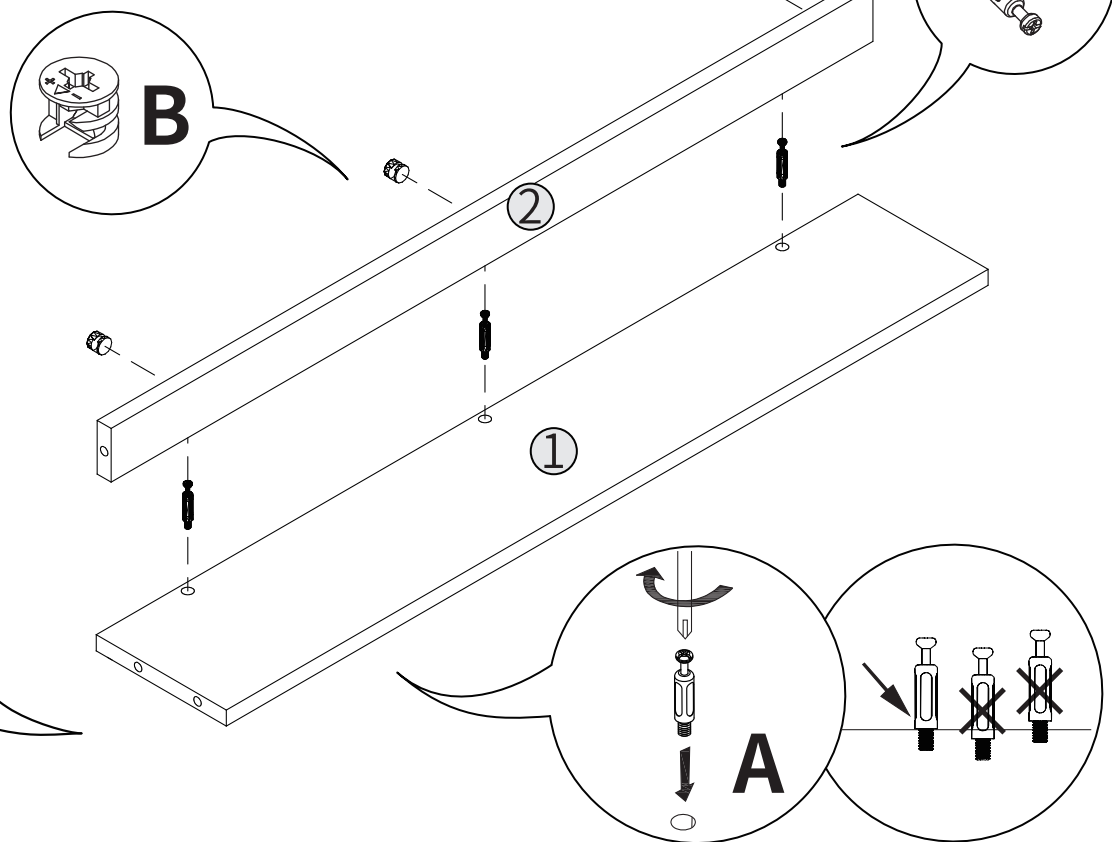
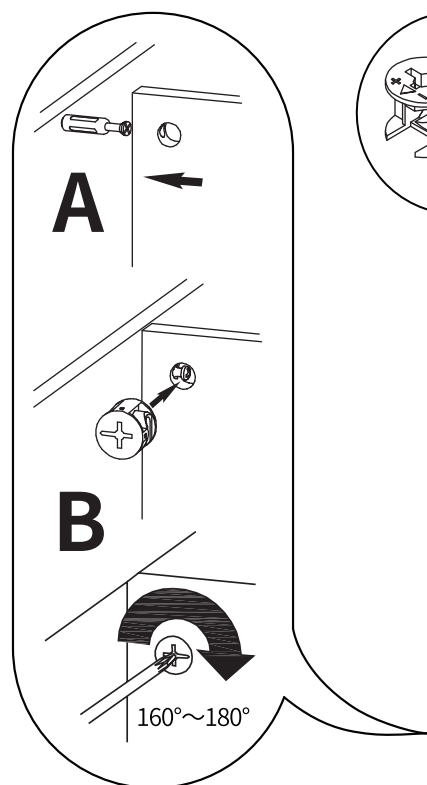
A  47 PCS	B  47 PCS	C  5 PCS	D  1 PC
E  12 PCS	F  12 PCS	G  4 PCS	H  1 PC



INSTRUCTION STEP 1

A
× 3

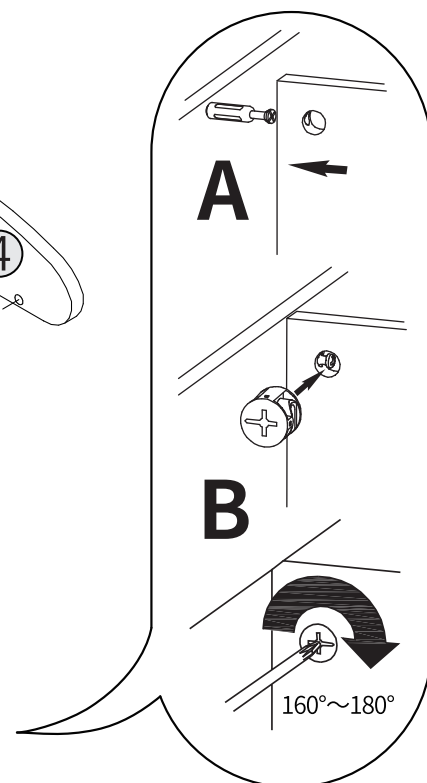
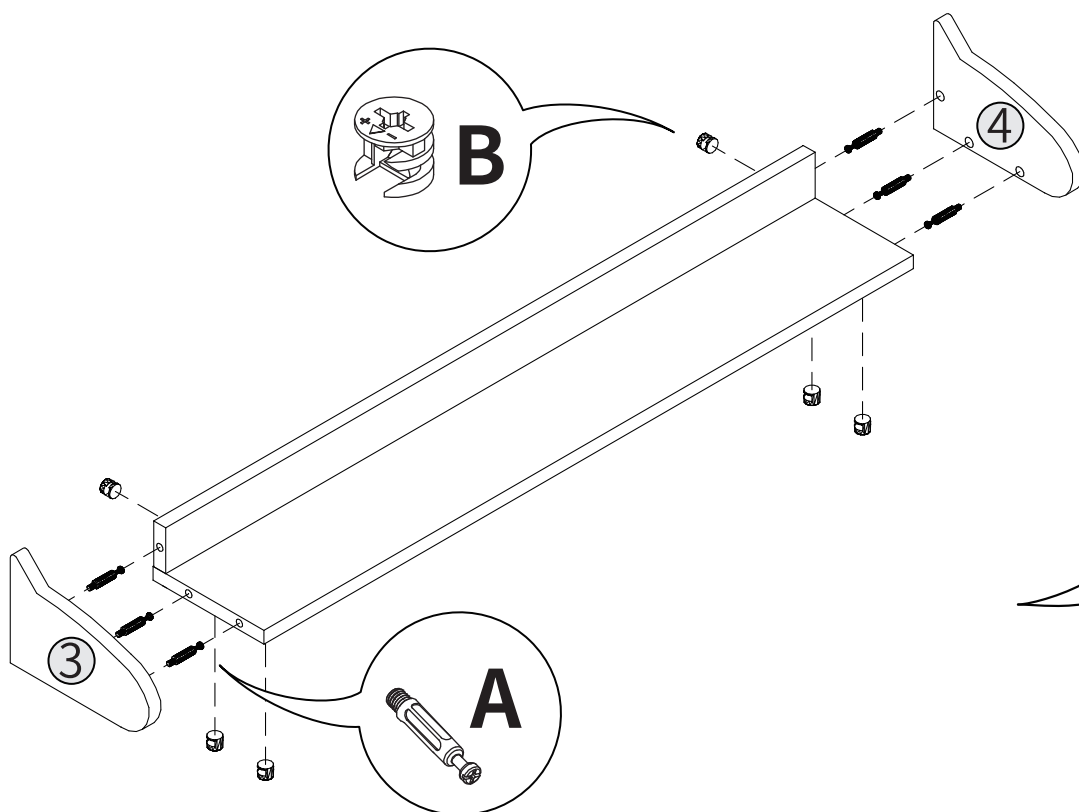
B
× 3



INSTRUCTION STEP 2

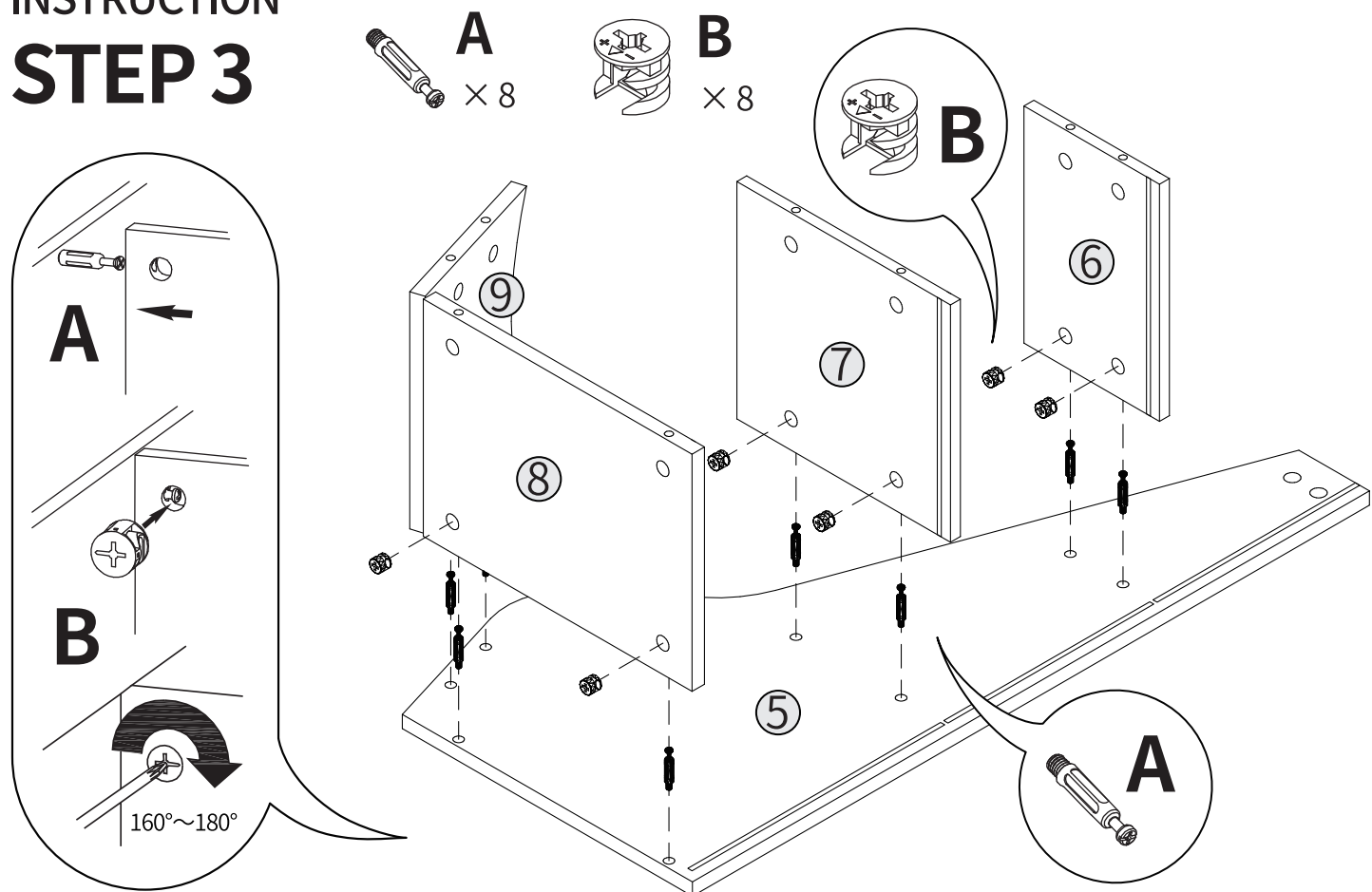
A
× 6

B
× 6



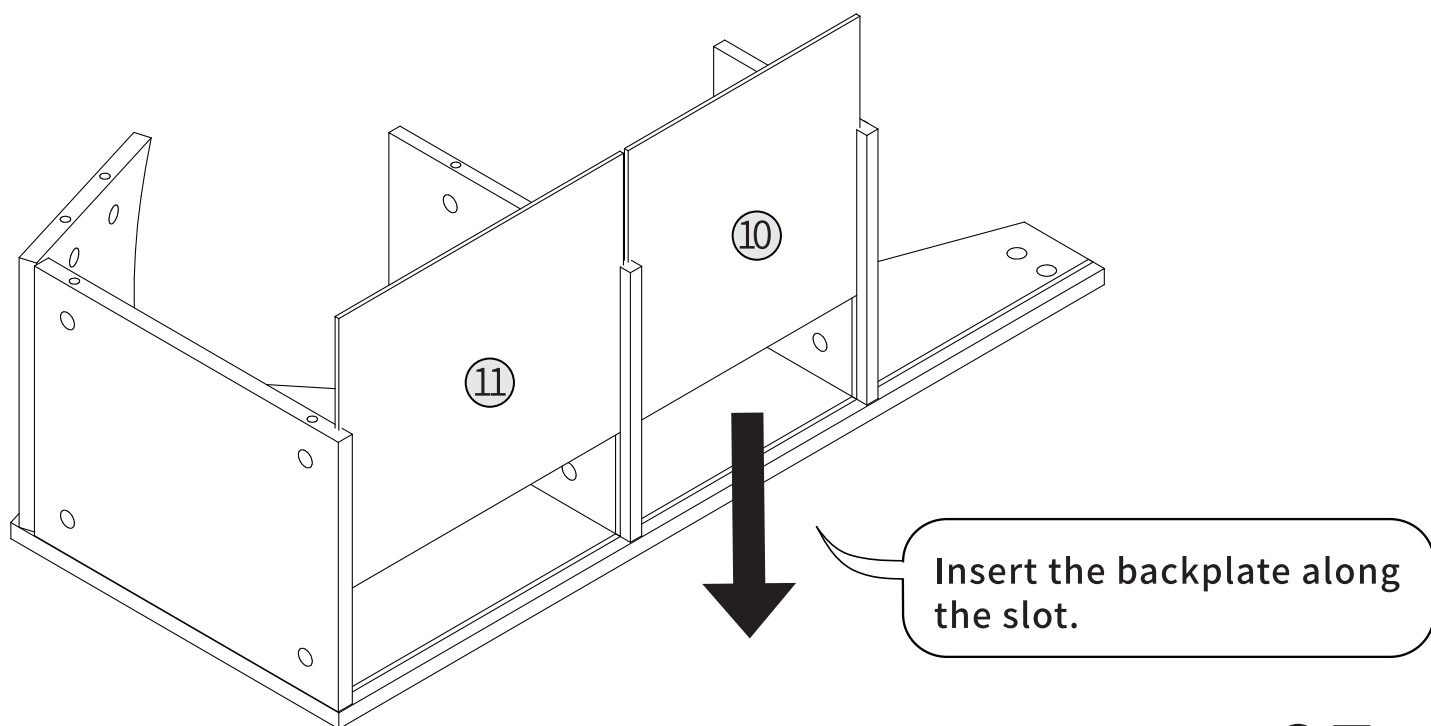
INSTRUCTION

STEP 3

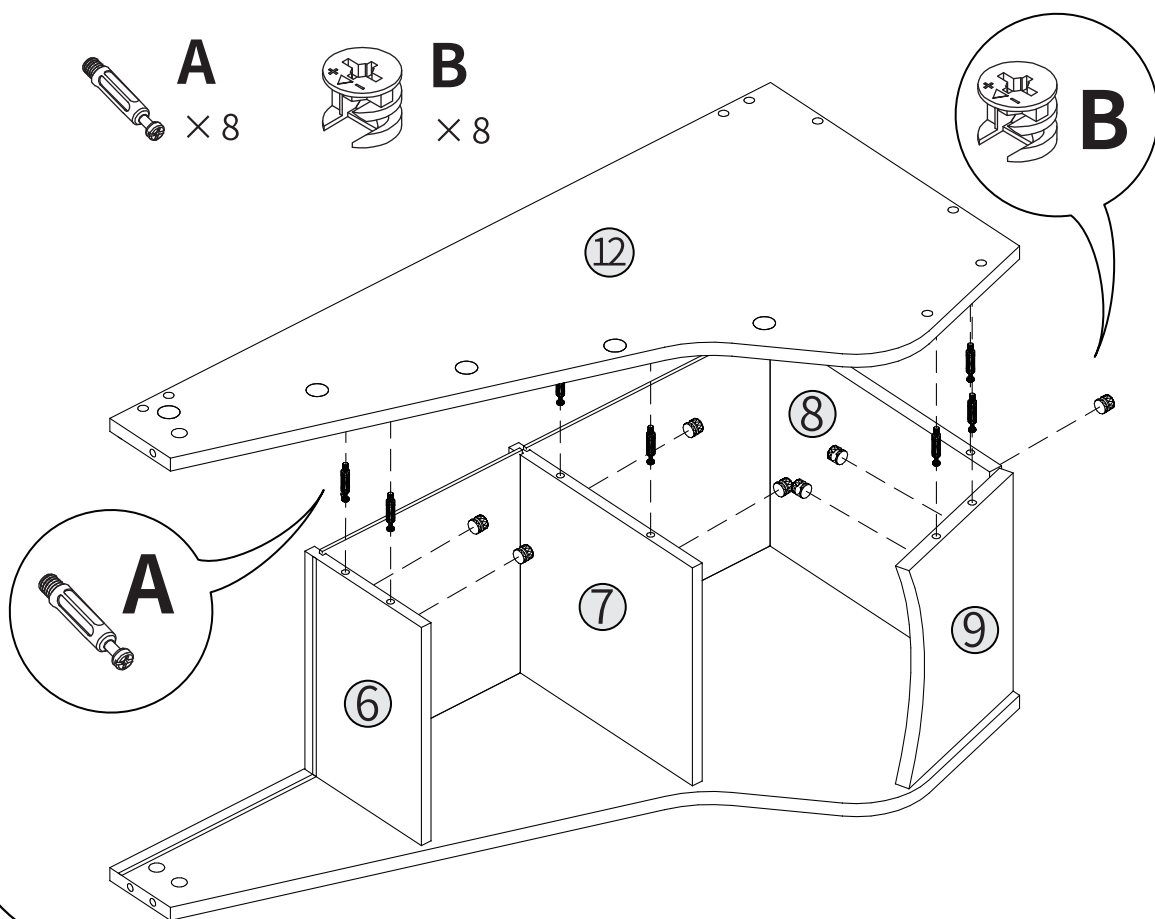
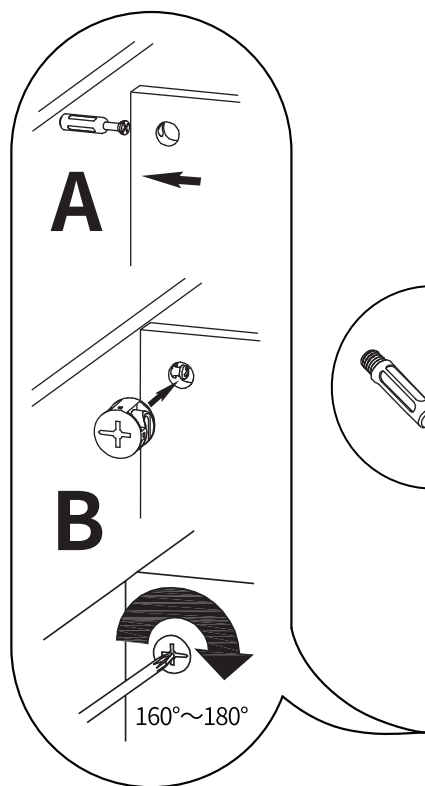


INSTRUCTION

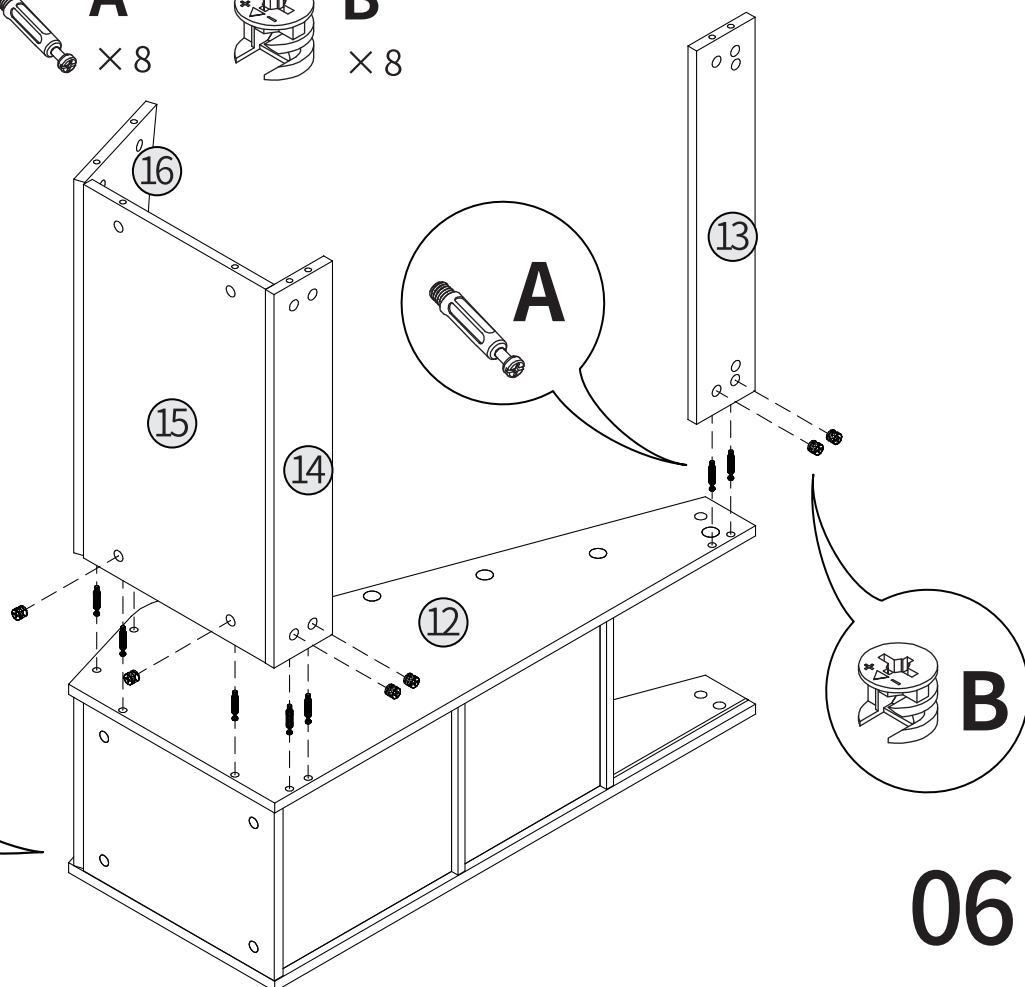
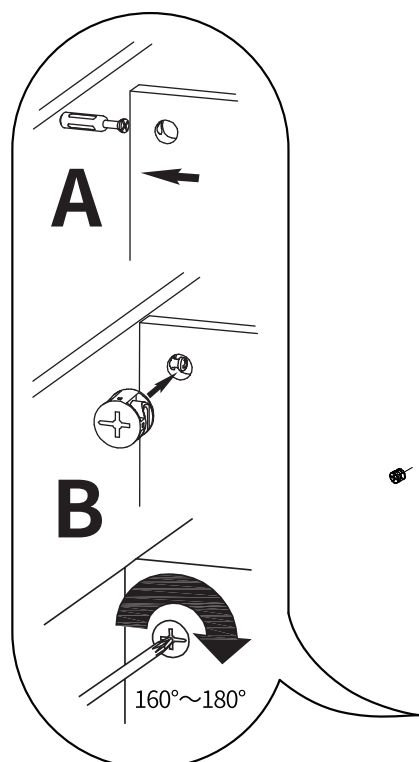
STEP 4



INSTRUCTION STEP 5



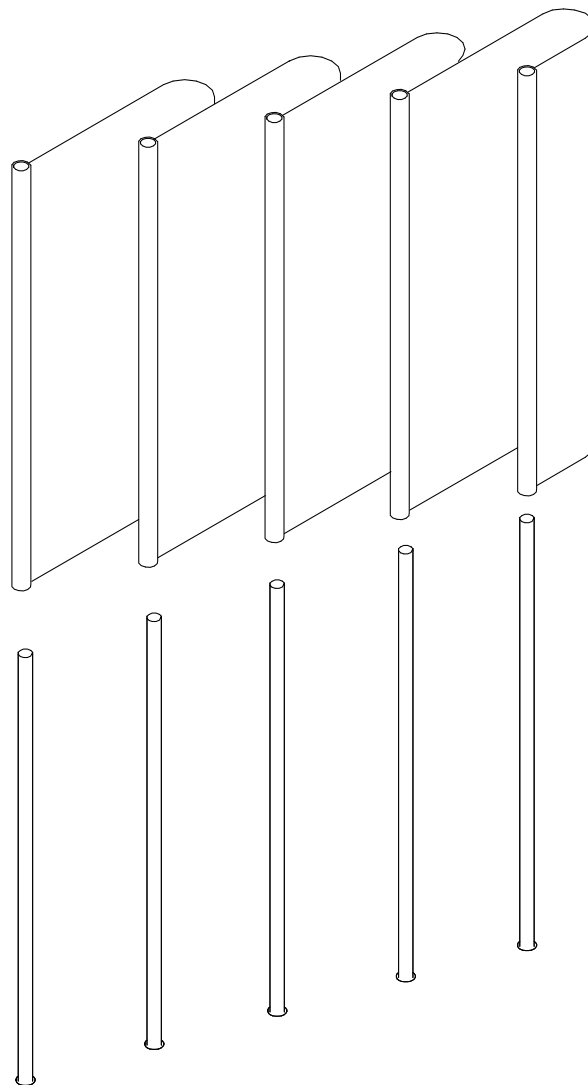
INSTRUCTION STEP 6



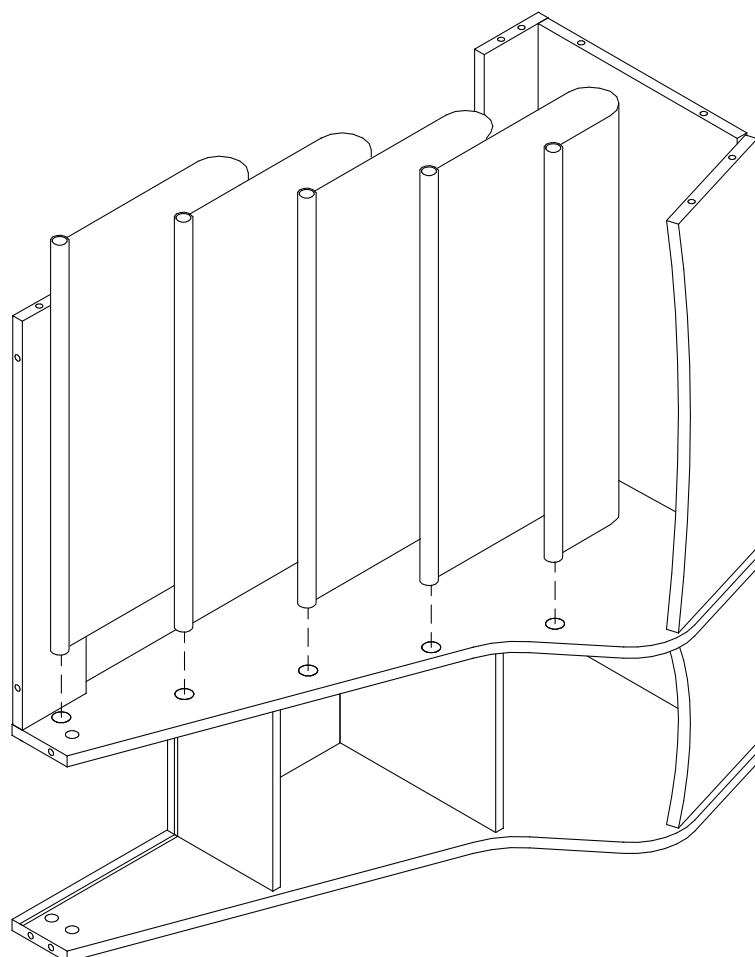
INSTRUCTION STEP 7



Please put the pocket on the stick.

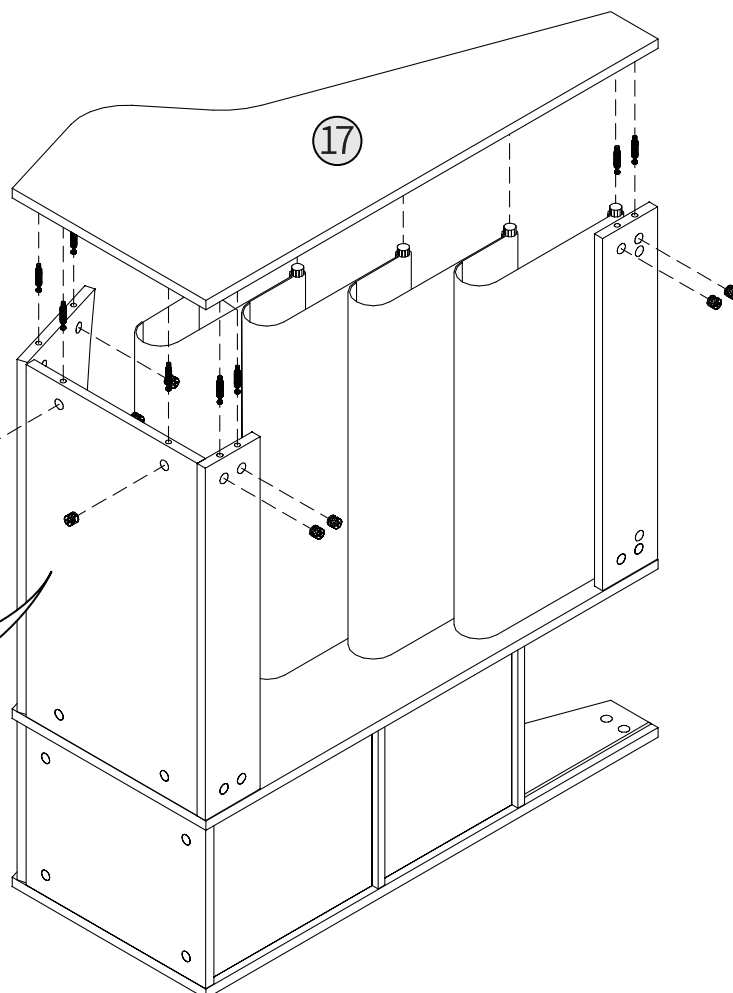
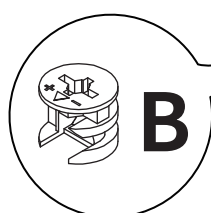
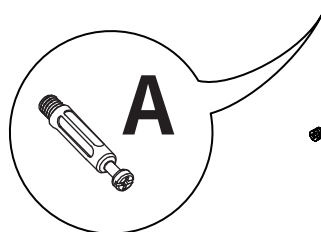
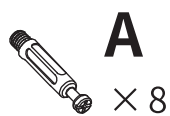


INSTRUCTION STEP 8



INSTRUCTION

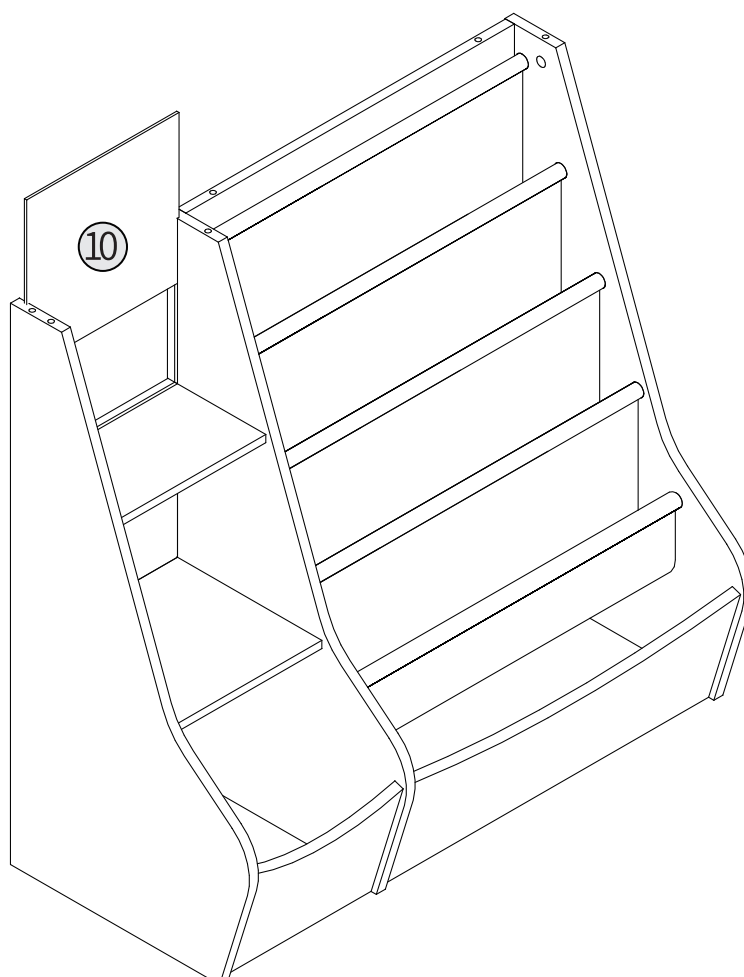
STEP 9



INSTRUCTION

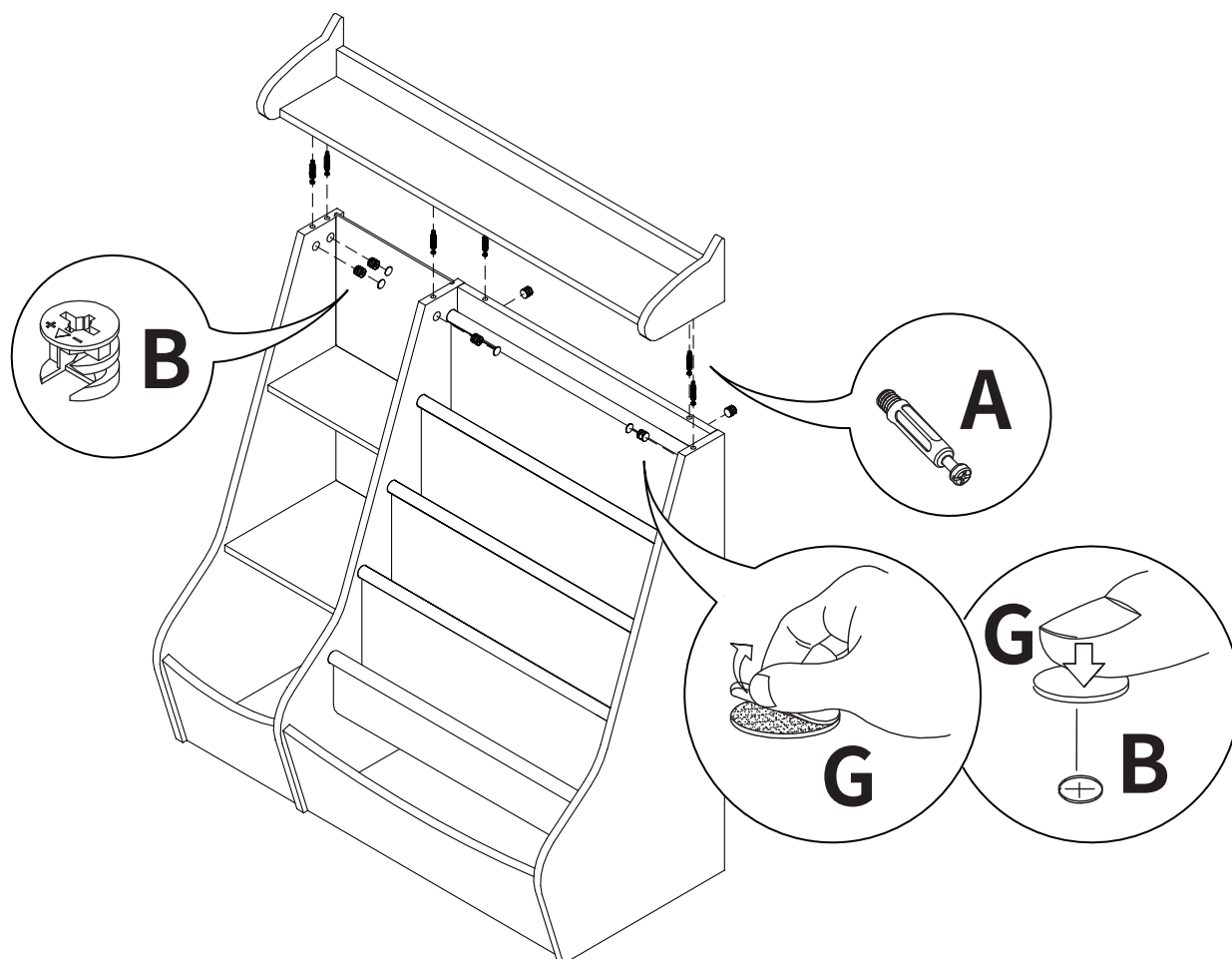
STEP 10

Insert the backplate along the slot.



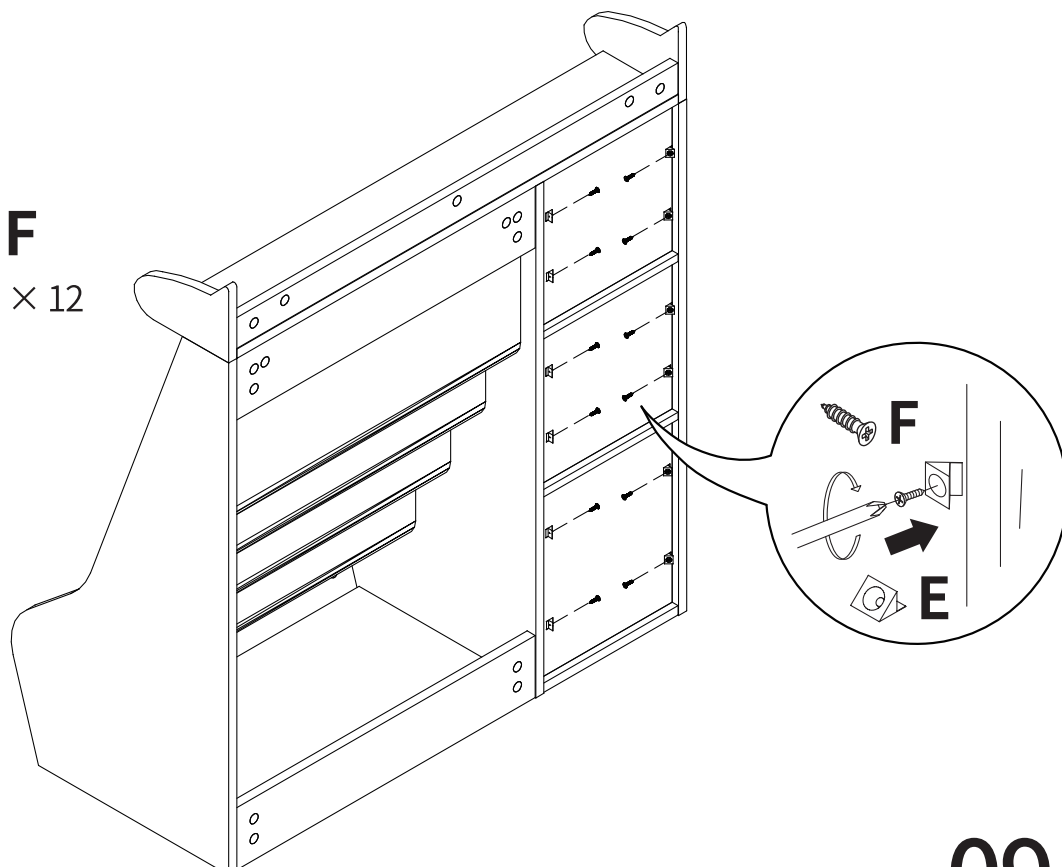
INSTRUCTION

STEP 11



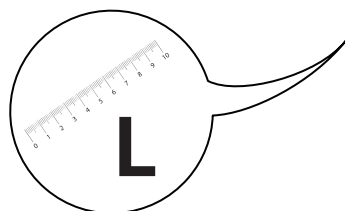
INSTRUCTION

STEP 12



INSTRUCTION

STEP 13



Transparent ruler can be pasted to the side of the bookshelf.

