



INLIGHT is registered trademarks of Inlight Co. Ltd. All Rights Reserved.

# Installation Guide

## FLOOR LAMP



### Questions, problems, missing parts?

Contact the customer service department at [info@getinlight.com](mailto:info@getinlight.com)

We commit to respond to emails within 24 hours - and sooner, if possible!

We are devoted to solving problems and offering the best service to our customers.

SKU #

IN-0808-1-BK

Model #

-



**PLEASE READ THESE INSTRUCTIONS BEFORE COMMENCING  
INSTALLATION AND RETAIN FOR FUTURE REFERENCE.**



**ATTACH YOUR RECEIPT HERE**

Purchase Date \_\_\_\_\_

## Safety Information

- To reduce the risk of death, personal injury or property damage from fire, electric shock, falling parts, cuts/abrasions, and other hazards read all warnings and instructions included with and on the the fixture box and all fixture labels.
- Before installing, servicing, or performing routine maintenance upon this equipment, follow these general precautions.
- Commercial installation, service and maintenance of luminaires should be performed by a qualified licensed electrician.
- For Residential installation: If you are unsure about the installation or maintenance of the luminaires, consult a qualified licensed electrician and check your local electrical code.
- DO NOT INSTALL DAMAGED PRODUCT!
- This fixture is intended to be connected to a properly installed and grounded UL listed junction box.
- These instructions do not purport to cover all details or variations in equipment nor to provide every possible contingency to meet in connection with installation, operation, or maintenance. Should further information be desired or should particular problems arise which are not covered sufficiently for the purchaser's or owner's purpose, this matter should be referred to Inlight Co. Ltd.

## IMPORTANT SAFETY INSTRUCTIONS

### WARNING: RISK OF ELECTRICALSHOCK

- Turn off electrical power at fuse or circuit breaker box before wiring fixture to the power supply.
- Turn off the power when you perform any maintenance.
- Verify that supply voltage is correct by comparing it with the luminaire label information.
- Make all electrical and grounded connections in accordancewith the National Electrical Code and any applicable local code requirements.
- All wiring connections should be capped with UL approved wire connectors.

### CAUTION: RISK OF INJURY

- Wear gloves and safety glasses at all times when removing luminaire from carton,installing, servicing or performing maintenance.
- Avoid direct eye exposure to the light source while it is on.
- Account for small parts and destroy packing material, as these may be hazardous to children.

### WARNING: RISK OF BURN

- Allow fixture to cool before handling. Do not touch enclosure or light source.
- Do not exceed maximum wattage marked on luminaire label.
- Follow all lamp manufacturer's warnings, recommendations and restrictions for: driver type, burning position, mounting locations/methods, replacement, and recycling.

### CAUTION: RISK OF FIRE

- Keep combustible and other materials that can burn away from luminaire and lamp/lens.

## Warranty

Inlight offers a 1 year warranty from the date of purchase which covers repairs or replacements of defective parts of the housing, optics, and electronics. Contact the Customer Service Team at [info@getinlight.com](mailto:info@getinlight.com) or visit [www.getinlight.com](http://www.getinlight.com)

## Installation Instructions

BEFORE STARTING THE INSTALLATION, SHUT THE LINE FEED POWER OFF USING THE CIRCUIT BREAKER. CONSULT A LOCAL LICENSED ELECTRICIAN OR ELECTRICAL CONTRACTOR IF YOU ARE NOT SURE ABOUT THE INSTALLATION.



### TURN OFF ELECTRICITY

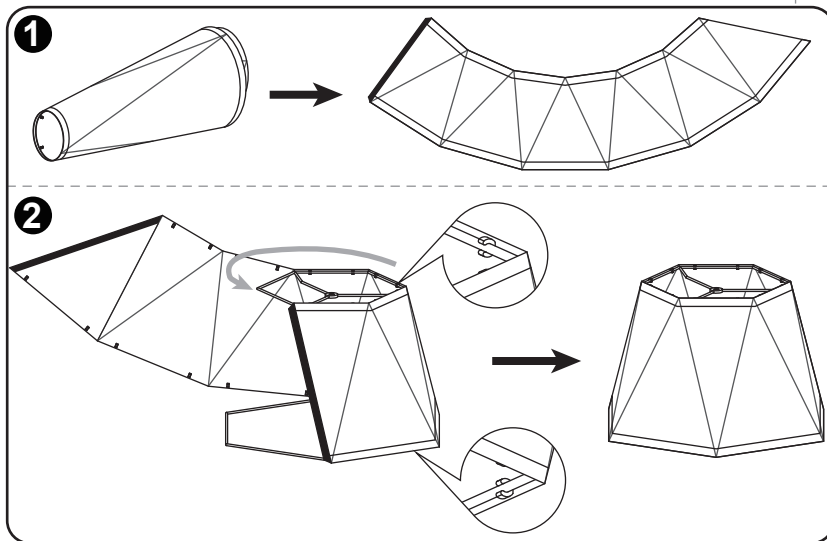
At main fuse box (or circuit breaker box)  
Before removing the old fixture



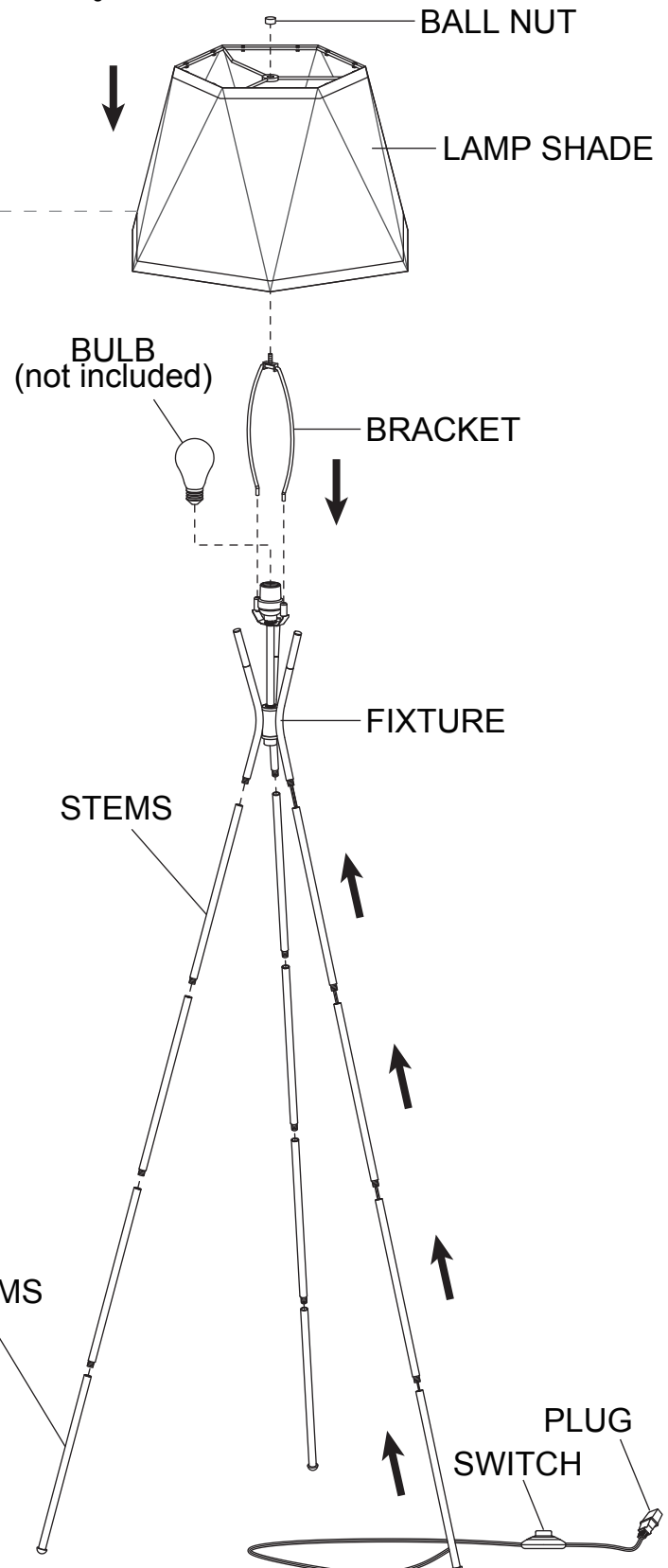
### REQUIRES 2 PEOPLE

Assistance will be required to support  
the fixture during installation

- 1** Gently take all parts out of the package. Carefully lay all parts out in a line on a flat surface.
- 2** Install LAMP SHADE as shown.
- 3** Screw the STEMS into the FIXTURE.
- 4** Screw the DECORATIVE STEMS into the STEMS.
- 5** Screw the BRACKET into the FIXTURE.
- 6** Install BULB (not included). See relamping label at socket area or packaging for maximum allowed wattage.
- 7** Use the BALL NUT to attach the LAMP SHADE to the FIXTURE.
- 8** Insert the PLUG to wall outlet and use the SWITCH to turn on or off the lamp.




DECORATIVE STEMS



Questions, problems, missing parts? Before returning to the store,  
contact Inlight Customer Service

**info@getinlight.com**

Retain this manual for future use.

 is registered trademarks of Inlight Co. Ltd. All Rights Reserved.