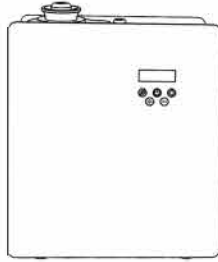
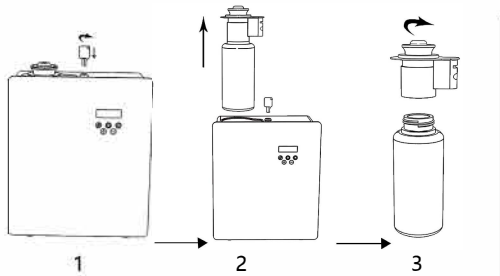


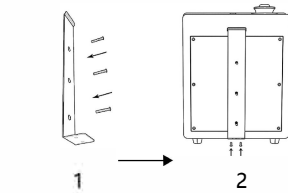
# PRODUCT INSTRUCTIONS



## INSTALLATION INSTRUCTIONS



1. Insert the key first , turn 90 degrees counterclockwise to unlock.
2. Pull up the atomizer.
3. Turn counterclockwise to unscrew the essential oil bottle and add essential oil.



1. Drill positioning holes in the wall at appropriate locations and fix the hanging board with screws.
2. After inserting it into the notch on the back of the chassis ,lock the screw at the bottom.

## ACCESSORIES:



Power Adapter



PE trachea



Quick Connector



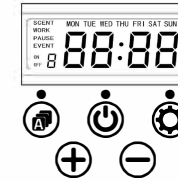
key \* 2



Plastic wall plug \* 3



Self-tapping screws \* 3



## KEY DESCRIPTION:

1. A key: set concentration and working time, click to switch different pages.
2. On key: short press to start; Press and hold for 3 seconds to turn off the machine when it is unlocked.
3. key and key: adjust time, concentration gear and week selection.
4. Setting key: ① confirm that the selected page enters the setting state; ② Long press the set key to adjust the device time.

## OPERATING INSTRUCTIONS

1. Unlock / lock: Press " " and " " at the same time to lock or unlock the screen. The default state is unlock when power on.
2. Factory reset: Keep pressing " " until the screen turn white and flashing, then power off/on the machine.
3. Testing mode: Unlock the machine and keep pressing " ", and there will be 10 seconds testing mode. Stop testing if stop pressing " "
4. Time Setting: Unlock the machine, and keep pressing " " until there is number flashing on the screen. Press " " and " " to set the time: Hours, Minutes, Week days. And then press " " for confirmation.
5. Enter the setting: Unlock the machine and press " ".

## Setting of Scent Working Time

There are 6 working time setting and different levels of scent concentration in this machine.

Steps of the 1st working time:

- When press " " for the 1st time, the screen shows (1PL:1-21), which mean the levels of the 1st working time. You can press " " with " " " " to change the levels. There are 21 levels with different scenting time and pause time.  
(New version: 21 levels, 21st level is for free time setting: Scenting time is from 1 to 999 seconds, pause time is from 10 to 999 seconds.)



- When press "A" for the 2nd time, the screen shows (EVEN ON 1) which means the 1st working time, and then press "M" to change the time and working week days.
- When press "A" for the 3rd time, the screen shows (EVENT OFF 1) which means the stop time, and then press and then press "M" to change the time
- When press "A" for the 4th time, the screen shows (SCENT WORK 1) which shows the scenting time of 1st working time.
- When press "A" for the 5th time, the screen shows (SCENT PAUSE1), which shows the pause time.

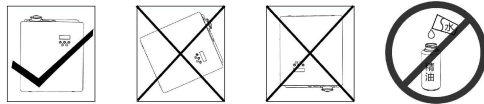
If you want to set 2-6 timer, you can press "A button" for setting, the method is the same as the above.

## ATOMIZATION GEAR AND TIME (UNIT / S)

PL	G1	G2	G3	G4	G5	G6	G7	G8	G9	G10	G21
WORK	15	15	20	20	25	30	30	30	30	30	<b>Free time setting</b>
PAUSE	300	150	120	85	80	75	60	50	40	33	
PL	G11	G12	G13	G14	G15	G16	G17	G18	G19	G20	
WORK	33	40	50	60	75	80	85	120	150	300	<b>1-999</b>
PAUSE	30	30	30	30	30	25	20	20	15	15	<b>10-999</b>

## ! NOTES

1. Please place the device on the flat position, do not tilt it.
2. Do not mix water into the essential oil.
3. Please operate and maintain the device refer to the instruction. Do not dismantle or modify the device.
4. Please use alcoholic solution to wash the bottle and atomize core when the device has not been used for a long time.
5. Please wash atomize core with alcoholic solution when the device operate for 2 months.



## TROUBLESHOOTING

If there are any problems, please try to solve them in the following ways .

Problem or breakdown	Solution
Non atomization	1. Check if the power is on ; 2. Check if the time period is set during the non-working period ; 3. Check if the air pump is working ; 4. Check if the air intake seal is leaking or if the seal is broken ; 5. The suction pipe is blocked or detached ;
Small atomization	1. Check if the intake seal is broken and the suction pipe is blocked ; 2. Check if the atomization system and the essential oil bottle seal are damaged or fall off ;
Oil leakage	1. Check whether the atomization system is damaged ; 2. Check whether the sealing rings of atomization system and essential oil bottles are damaged or fall off ; 3. Check whether the essential oil bottle is tightened ;
Abnormal noise	1. Check whether the air pump is loose or not, and re-fix the air pump ; 2. Check whether the air pump is damaged, replace the new air pump ;

## EQUIPMENT MAINTENANCE

In order to ensure the best aroma effect, please check and maintain the equipment regularly, as follows:

1. Open the device remove the used essential oil bottle;
2. Pour proper amount of alcohol into the essential oil bottle and clean it;
3. After cleaning, pour in a small amount of alcohol, install the essential oil bottle on the equipment, turn on the equipment and work for 5 to 10 minutes;
4. Turn off the power after cleaning the equipment;
5. Take out the essential oil bottle, put in the essential oil, install it on the equipment.

## AFTER SALES SERVICE

The equipment is sold within one year from the date of sale. Providing paid maintenance beyond the warranty period.

The following man-made or accidental damage is not covered by the warranty:

1. Use a power adapter that is not equipped with this device or an insecure power supply socket to cause the device to be short-circuited;
2. Do not attempt to disassemble the device, otherwise it is deemed to automatically give up the warranty;
3. It is not used in accordance with the specifications correctly, the equipment is damaged by the leakage of essential oil after the water is injected and the essential oil is inverted.
4. If you encounter any after-sales problems, you can contact the authorized sales service providers in each region or contact our sales center.