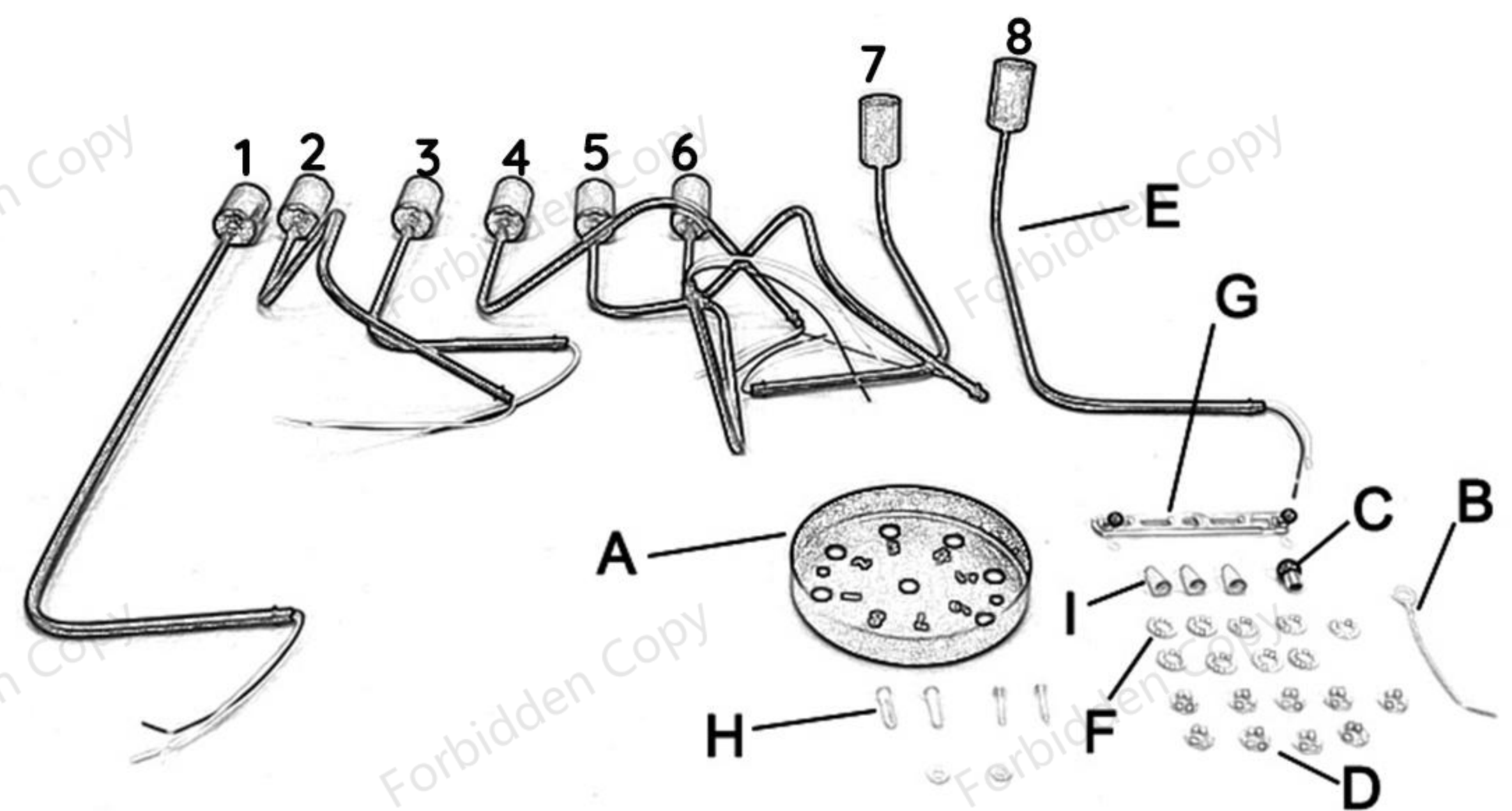


Assembly Instruction Sheet for Model HL420000

Package Contents

| Part | Description | Quantity |
|------|------------------|------------|
| A | Ceiling Canopy | 1 pc. |
| B | Ground Wire | 1 pc. |
| C | No.1 Screw | 1 pc. |
| D | Nut | Multi pcs. |
| E | Fixture Arm | 8 pcs. |
| F | Washer | Multi pcs. |
| G | Mounting Bracket | 1 pc. |
| H | Expansion Anchor | 2 pcs. |
| I | Lock Cap | Multi pcs. |



Step 1:

Connect the Ceiling Canopy(A) and Ground Wire(B) with No.1 Screw(C) and Nut(D), as shown in the picture.

Step 2:

Correspond to the numbers of the Ceiling Canopy(A) and the Fixture Arm(E) one by one, and install the Fixture Arm with Nuts(D) and Washers(F) in turn.

Step 3:

Install the Mounting Bracket(g) with Expansion Anchors(H).

Step 4:

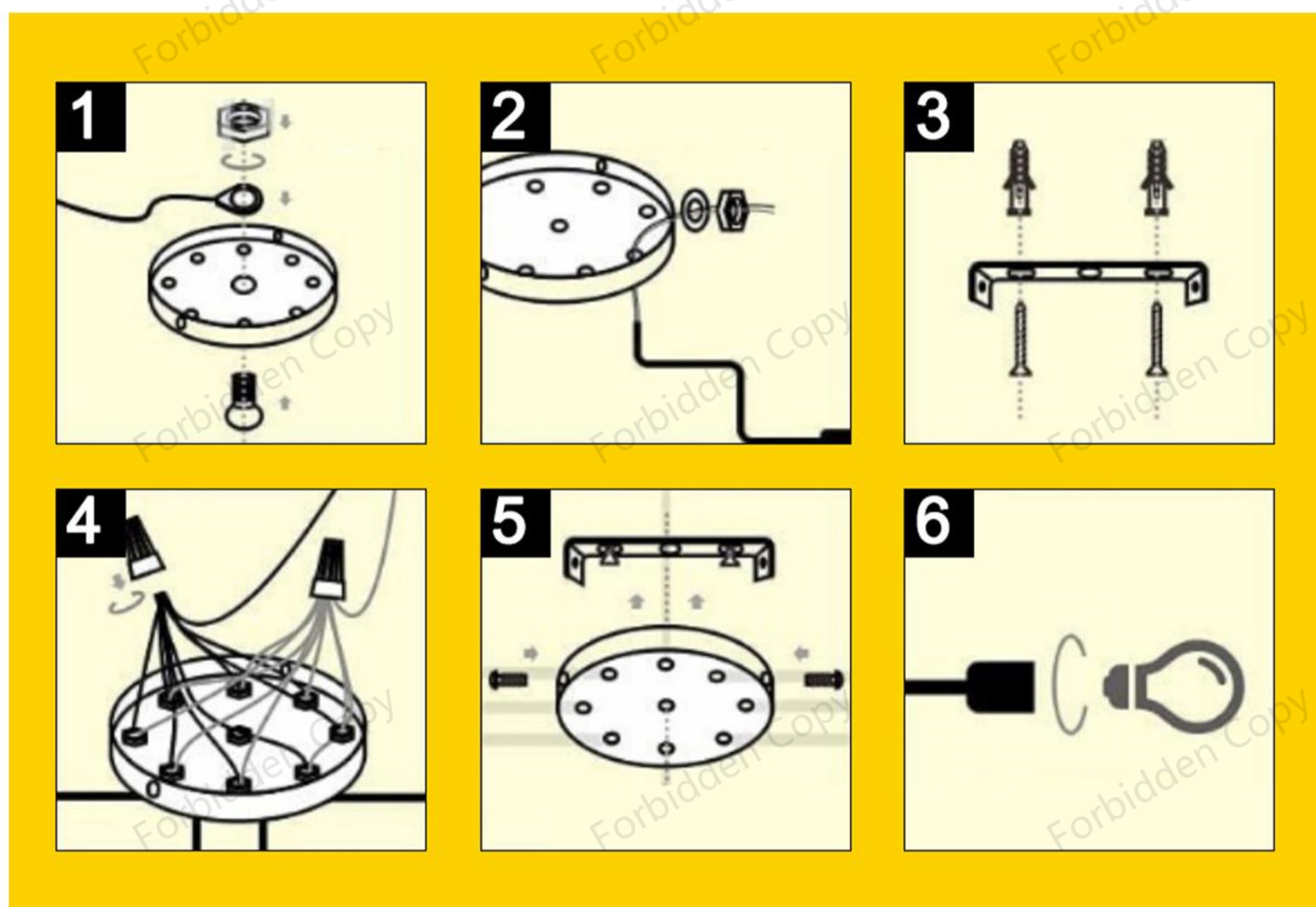
Differentiate the color of the wires of the Fixture Arm(E), connect 8 wires of the same color into one, fix it with a Lock Cap(I), and connect it to a ceiling wire; connect the wires of another color in the same way.

Step 5:

Secure the Ceiling Canopy(A) to the Mounting Bracket(G) with screws.

Step 6:

Insert your bulb(Not Included) to the bulb base.



Your fixture is now assembled and ready to use.