



HP3 Halloween Projector



User Guide

Caution!

WARNING: Please use this product as instructed. Misuse may cause injury or death.

DO NOT use while driving

DO NOT expose to water or wet surfaces. Electric shock may occur

DO NOT expose the projected LED image to your eyes or the eyes of others

DO NOT block or restrict airflow from ventilation holes as this may cause the projector to overheat

Keep the projector, battery, or charger away from any heat sources

Table of Contents

Chapter 1: HP3 at a Glance

HP3 Introduction	1
Remote & Keypad	2
Accessories	3

Chapter 2: Getting Started

Powering On / Off	4
Focus Adjustment / Throw Distance	5
Connecting to Speaker/ Headphone	6
Loading External Content	7
Keystone & Projection Direction	9

Chapter 3: Menu Screens

Main Menu	11
Halloween Effects Menu	12
Autostart	13
Files Menu	15

Connecting via Digital Input	17
------------------------------	----

Chapter 4: Settings Menu

Picture Menu	21
Sound Menu	22
Options Menu	23

Chapter 5: Technical Details

Troubleshooting	24
Specification	27
Notes	28

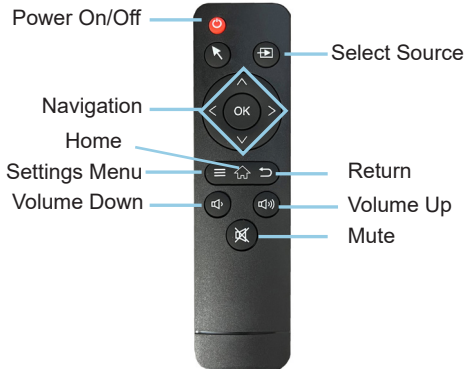
HP3 at a Glance

Chapter 1

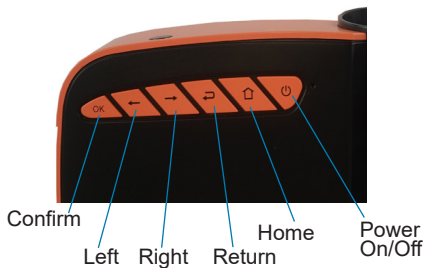
Main Unit



Remote & Keypad



Remote



Navigation Pad

Both the keypad and remote can be used to navigate through the menus. The Main Menu Navigation on the remote functions exactly the same as the directional pad on the HP3 unit.

Accessories



Power Cable



Remote



Preloaded
TF Card

**Under various circumstances, the actual accessories may be different from those shown in the pictures above.*

Additional accessories are available for purchase at www.aaxatech.com

Getting Started

Chapter 2

Powering ON the projector

1. Connect the power cord to the HP3.
2. Connect the other end of the power cord into the wall power source.
3. Press the On/Off button at the top of the HP3 for about 3 seconds, wait shortly and the projector should automatically boot up and turn on. You can also press the Power On/Off button on the Remote Control to power on the projector.

Standby Mode

1. To transite to "STANDBY MODE", press the power button on the remote control.
2. The optical engine should power off and the fan should stop spinning. The projector is now in "STANDBY MODE" and can be turned on using the remote control.

Powering OFF the projector

1. To turn off the projector, press the "On/Off" button on the navigation pad on top of the projector or the remote control. This will fully turn off the projector.
2. Unplug and disconnect the HP3 from the power source



Focus Adjustment / Throw Distance

Focus Adjustment

- Spin the focus wheel up or down until the image becomes clear.



Throw Distance Chart

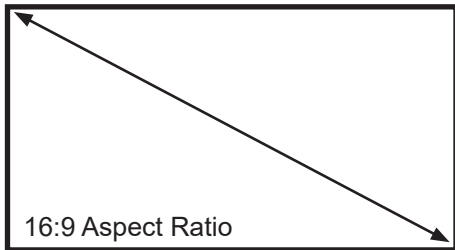
Throw Distance	Diagonal Screen
Units: Inches	Units: Inches
25	20
30	25
40	33
50	41
60	49
70	57
80	66
90	74

Throw Ratio 1.4:1

Projection Angle: 0% Offset

*minimum throw distance: 25 inches

DIAGONAL SCREEN SIZE



Connecting Speakers / Headphones



Step 1: Connect your speakers/headphones to the projector's audio port.

Step 2: Ensure that the projector and/or the headphones are powered on.

Step 3: Place the headphones on and enjoy!

***CAUTION:** Prolonged use of headphones at a high volume may impair hearing.

Loading External Content

The HP3 can read files directly from both a TF Card and USB Drive.

Supported file types include:
AVI / MP4 / JPG



(up to 64 GB)



(up to 64 GB)



Loading External Content Cont.

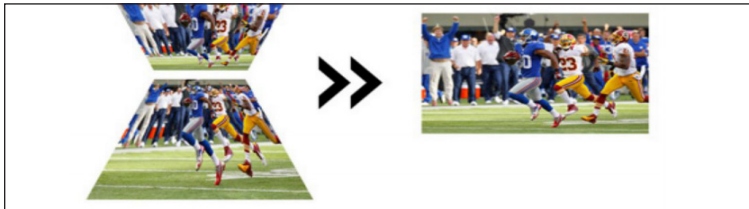
How to insert your TF Card

- Slide in your TF card into the TF card slot on the side of the HP3 (as shown in picture).
- Gently slide the TF card until it clicks into place.



(up to 64 GB)

Keystone Adjustment



What is Keystoneing?

“Keystoneing” occurs when a projector is aligned non-perpendicularly to a screen, or when the projection screen has an angled surface. The image that results from one of these misalignments will look trapezoidal rather than square.

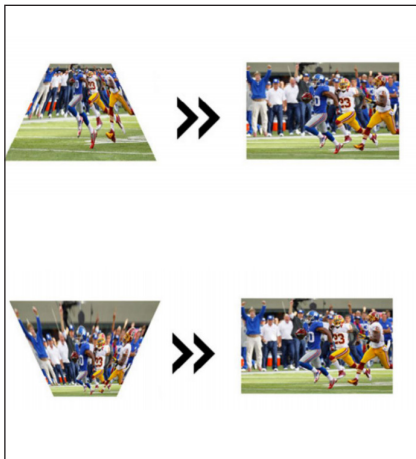
Keystone Adjustments

By adding a special, selectable algorithm to the scaling, some new projectors are able to alter the image before it reaches the projection lens. The result is a squared image, even at an angle.

Keystone Adjustment

How to Correct Keystone

- If the image looks trapezoidal with the base or the top larger, use the Keystone Adjustment wheel on the top of the HP3 projector to adjust the image until the projection screen is a squared image.



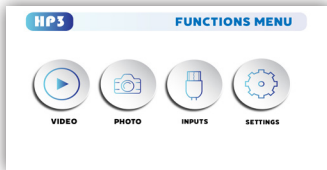
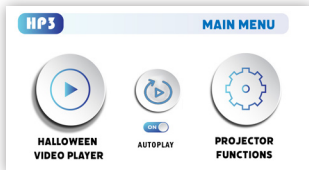
Menu Screens

Chapter 3

Main Menu

The HP3 features an Onboard Media Player.

To play videos, pictures, and music files directly from your connected devices, go to the “Projector Functions” in the Main Menu.



- Press the left and right directional buttons to choose an icon from the main menu.
- To select a menu option, press the “OK” button in the navigation pad.
- To go back to the previous screen, press the “Back” button.
- To return to the main menu, press the “Home” button.



Halloween Effects Menu

To play special Halloween effects:

- Select the “Halloween Video Player” icon (Fig. 3.1) in the Main Menu then choose the your preferred effects in the “Video Player Menu” (Fig. 3.2)
- Select “Play Single Video” if you wish to play an effect in loop mode. Select “Play All Videos” if you wish to play all 6 effects. (Fig 3.3)

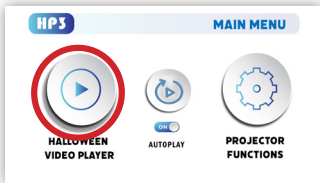


Fig. 3.1



Fig. 3.2

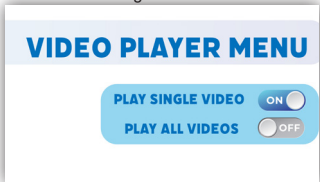


Fig. 3.3

Autostart

What is HP3 Autostart? The HP3 “Autostart” Function allows the HP3 projector to be turned on / off by a remote timer while automatically returning to video playback (single or all) when turned back on. Additionally the “Autostart” Function’s memory setting instructs the HP3 to automatically power on when power is applied – without the need to press the power button.



Autostart

Selecting a Single Video for Playback:

- To Select a single video for playback
- Turn on the “Autostart” function in the main menu(Fig. 3.4)
- Go to the Halloween Videos Menu(Fig. 3.5)
- Using a remote control select “Play Single Video”(Fig. 3.6)
- Enter and Play the Single Selected Video
- Power off the HP3 while the Single Selected Video is Playing
- The HP3 will power on and play that single video



Fig. 3.4



Fig. 3.5



Fig. 3.6

Files Menu

Opening A File:

- Select the “Projector Function” icon in the Main Menu (Fig 3.7)
- In the “Functions Menu”, select the “Video” or “Photo” icon (Fig 3.8)

Fig. 3.7

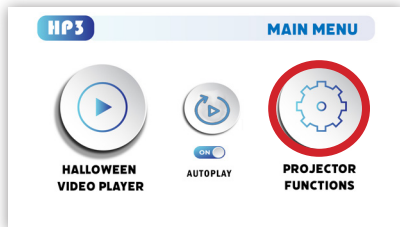
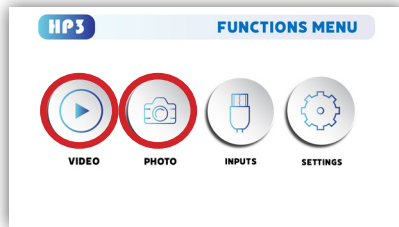


Fig. 3.8



Files Menu

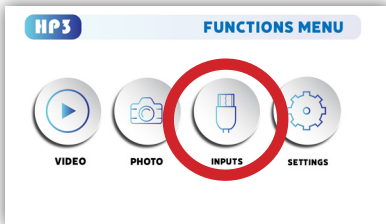
The HP3 will show all folders and files you have on your USB or TF Card drive. Use the navigation buttons on the navigation pad or the remote control to select folders or files.



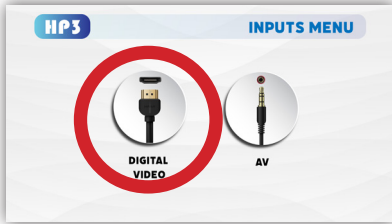
Connecting to Device via Digital Input

First, a digital input cable is required from your HP3 to your other device.

In the Functions Menu



Select the “Inputs” Icon



Then select the “Digital Video” Icon

Connectivity to Multimedia Devices

The HP3 can connect to many media devices including: computers, laptops, iPhones, iPads, DVD players, smart phones, cameras, video game consoles and other peripherals with ease. The HP3's digital input is compatible with HDMI interface. The connection type is “full sized”.

**Some smartphones require video out capabilities to be displayed with the HP3. Check with your phone manufacturer.*

Connecting to Digital Input Video Devices

Step 1:

Connect one end of the Digital Input Cable to your device's Digital Input port.



Step 2:

Connect the other end of the Digital Input Cable to your HP3's Digital Input port.



Step 3:

In the Main Menu, select the "Digital Video" Icon. Your HP3 should now be mirroring the content from your device.

Note:

If you're connecting to a computer or laptop and the projector does not automatically mirror it, read onto the next page for more information.

Connecting to a Computer via Digital Input

Step 4:

After connecting your projector to your computer or laptop via a digital input cable, you may need to enable Digital Video output on your computer. To enable Digital Video output on your computer most computers require “turning on” the video output feature. Each computer is different. Please consult your owner’s manual for instructions to enable Digital Video output. Below are standard instructions for a Windows 10 computer – not all systems are the same.

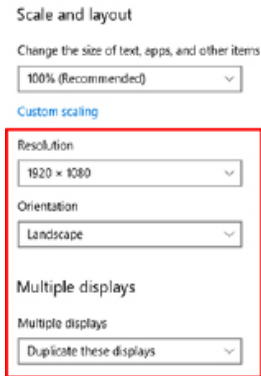
Step 5:



Press Windows+P to toggle through display settings. Select either “Duplicate” or “Extend” depending on your viewing option.

**NOTE: Different operating systems may differ*

Step 6:

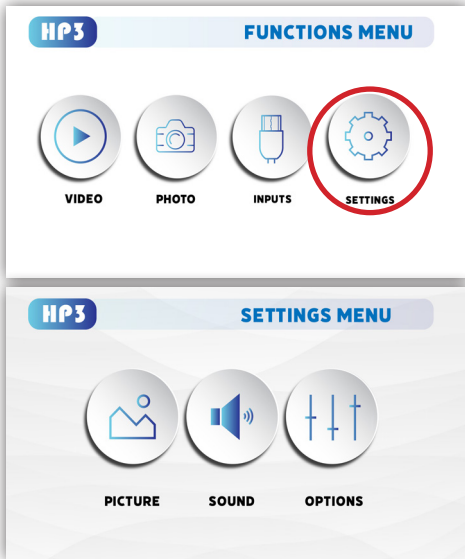


1. Right click on computer desktop and select “Screen Resolution.”
2. Display Properties window will pop up and select the Advance Display Settings.
3. Please make sure the “Multiple displays” has the “Duplicate these displays” option selected and the Resolution is 1920 x 1080 or below as pictured in the red box.
4. If the image is blurry or the text is not legible, adjust the screen resolution.

Settings Menu

Chapter 4

The Settings Menu can be accessed by selecting “Settings” icon in the “Functions Menu”.



Picture

- Picture Mode
- Color Temperature
- Aspect Ratio
- Noise Reduction
- Rotate (Projection Direction)

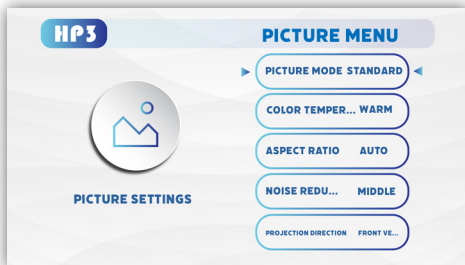
Sound

- Sound Mode
- Balance
- Auto Volume

Options

- OSD Language
- Restore Factory Default
- Slideshow Time
- Software Version

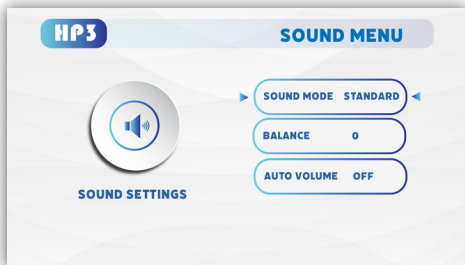
Picture Menu



In the Picture menu, you can set up:

- Picture Mode: Standard, Soft, Vivid, User
- Color Temperature: Cool, Medium, Warm, User
- Aspect Ratio: 16:9, 4:3, Auto
- Noise Reduction: High, Middle, Low, Default, Off
- Projection Direction (Rotate)

Sound Menu



In the Sound menu, you can set up:

- Sound Mode: Standard, Sports, Movie, Music, User
- Balance: Increase or decrease sound balance
- Auto Volume: Turn Auto Volume On or Off

Options Menu



In the Options Menu, you can set up:

- OSD Language: Change the OSD Language
- Restore Factory Default
- Slideshow Time: 5sec, 10sec, 15sec, OFF
- Software Version: Check Software Version

Technical Details

Troubleshooting

IMAGE IS BLURRED

Possible Causes	Solution
The Projector is not in focus.	Adjust the focus wheel on the top of the projector until the image is crisp and clear. Make sure that the projector is placed at least 2 feet away from the screen. (check page 5)
The Projector is offset from plane / angle of operation.	Move the projector so that it is both 180 degrees and on an even plane with the screen or adjust the keystone using the keystone adjustment wheel. (check page 10)

IMAGE IS BLURRED

Possible Causes	Solution
The Projector is not in focus.	Adjust the focus wheel on the top of the projector until the image is crisp and clear. Make sure that the projector is placed at least 2 feet away from the screen. (check page 5)
The Projector is offset from plane / angle of operation.	Move the projector so that it is both 180 degrees and on an even plane with the screen or adjust the keystone using the keystone adjustment wheel. (check page 10)

Technical Details

Troubleshooting

THE HALLOWEEN VIDEOS ARE CORRUPTED

Possible Causes	Solution
The pre-loaded Halloween videos are corrupted.	Please contact our customer support via email info@aaxatech.com , we will help you download new Halloween effects.
The TF card is corrupted	Please contact our customer support via email info@aaxatech.com , we will help you with a replacement.

NO SYNC, NO SIGNAL

Be sure to setup the computer to enable a video signal output. On some laptops this is done by pressing and holding Function F5 key. If using the HP3 as an external monitor on Windows based systems, this can be done by selecting "extend my desktop to this monitor". Depending on the video driver different resolutions may need to be selected for proper output.

Technical Details

Troubleshooting

THE PROJECTOR DOES NOT TURN ON

Possible Causes	Solution
There is no power.	Check to ensure the power outlet source is good. Check the power adapter to ensure a proper connection with the wall outlet as well as the projector.
Cannot power on the projector from the remote control.	To power on the projector, press and hold the "On/Off" button on the top of the projector. Next, if the projector is not powered on, press the Power button on the remote control.

NO PICTURE / FILE NOT SUPPORTED

Possible Causes	Solution
The video source is not properly connected or selected	Check the video source signal to ensure that it is properly connected. Select the current input source by choosing the input desired from the main menu
Incorrect file extension / Video is encoded with incorrect codec	Please refer to "Specifications" page to see which file types and codex are supported. Verify that the file was encoded properly.

Specifications

Brightness:	300 Lumens
Native Resolution:	720p HD (1280 x 720)
Contrast Ratio:	1000:1
Aspect Ratio:	16:9
Projection Lens:	Manual Focus
Image Size:	30~100 inches
Video in:	Digital Input (HDMI Compatible), Composite A/V
File Play Back:	USB Memory Stick reader (up to 64GB)
Audio Output:	TF Card Reader (up to 64GB)
	2W High-Low Frequency Speaker
	3.5mm Stereo Headphone Jack
USB:	Full Sized 2.0
Power Consumption:	50 Watts
Dimensions:	7.8" x 6.25" x 2.85"
Weight:	1.68 lbs
Supported File Formats:	AVI / MP4 / JPG



Notes

daXd TECHNOLOGIES

Please direct all customer service inquiries to:

AAXA Technologies, Inc.
17781 Sky Park Circle, Suite #F
Irvine, CA 92614
(714) 957-1999
info@aaxatech.com