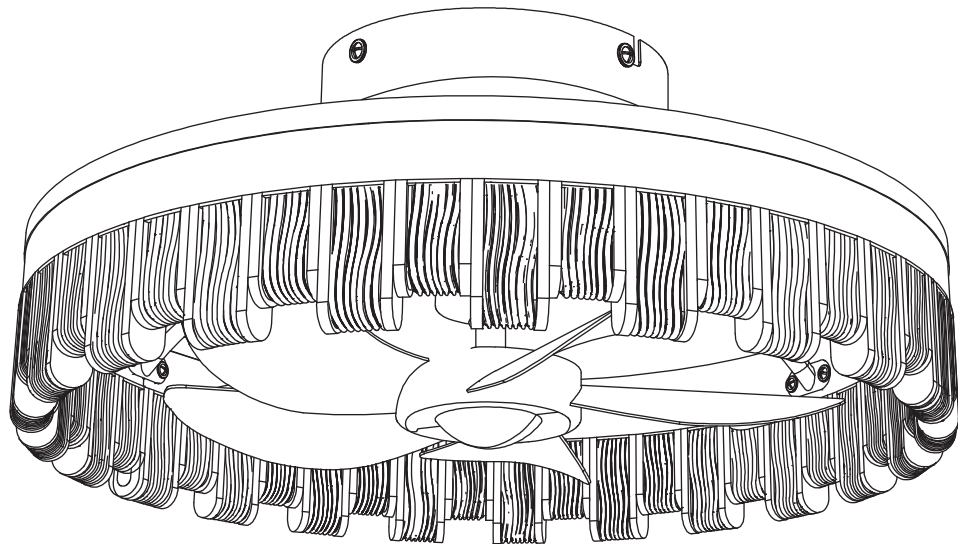


# INSTALLATION MANUAL

## CEILING FAN WITH LIGHTS

Model No.: QXF9029-02

Thank you for choosing and using our product.



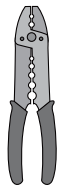
### TOOLS REQUIRED



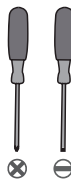
Ladder



Pliers



Wire Strippers

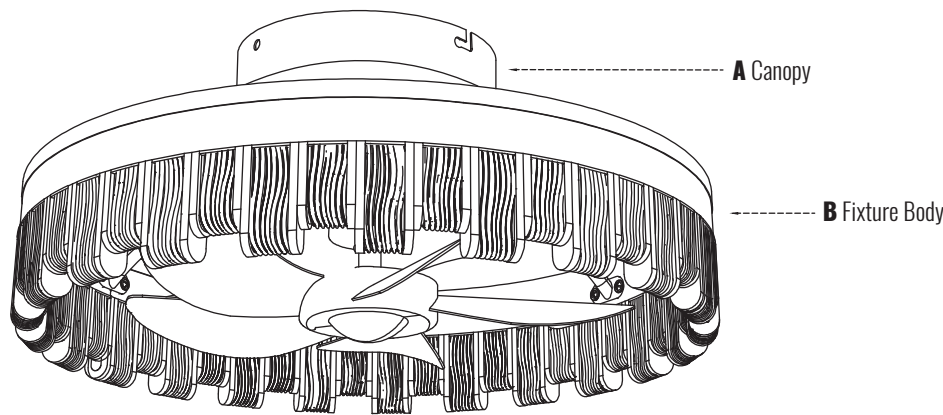


Screwdrivers



Power Drill

PACKING LIST



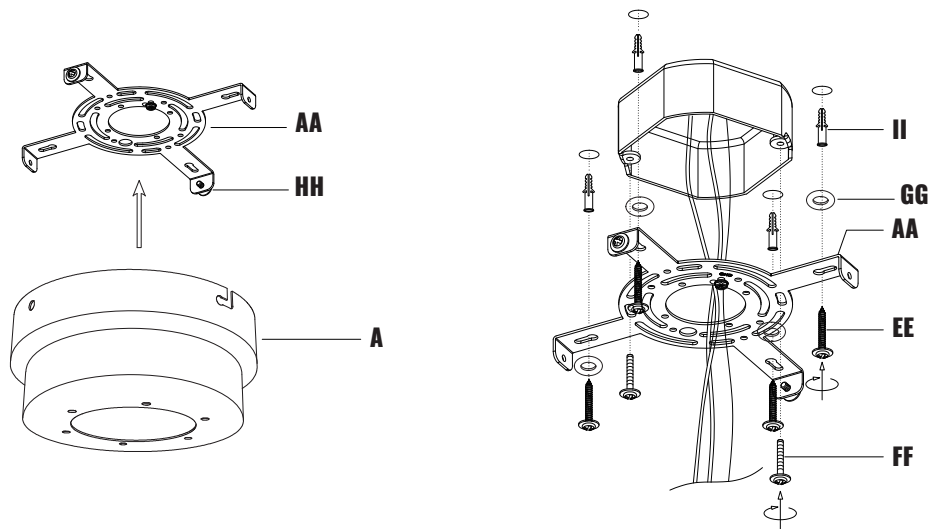
INSTALLATION KIT

AA	1x	BB	3x	CC	1x	DD	1x
Mounting Bracket		Wire Nut		'S' Hook		Ground Screw	
EE	4x	FF	2x	GG	4x	HH	4x
Long Wood Screw		Outlet Box Screw		Flat Washer		Set Screw	
II	4x	JJ	2x	KK	2x	LL	1x
Large Plastic Anchor		Small Plastic Anchor		Short Wood Screw		Remote Holder	
MM	1x	NN	1x				
Remote Control		Gloves					

**Note:**  
1.Some extra hardware may be included. The quantity listed above is the number required for installation.  
2.AA/HH are pre-installed on the Canopy (A).  
3.DD is pre-installed on the Mounting Bracket (AA).

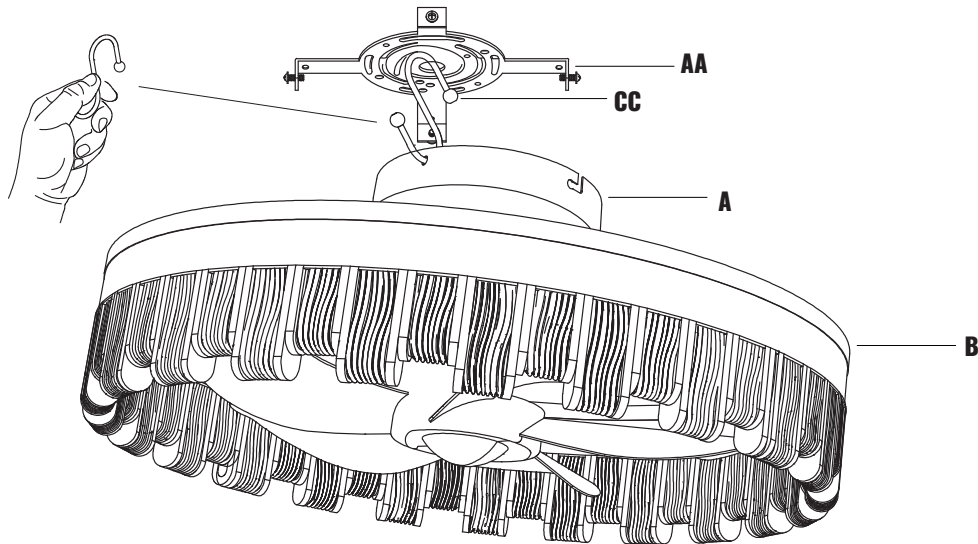
INSTALLATION

1.Install the Mounting Bracket



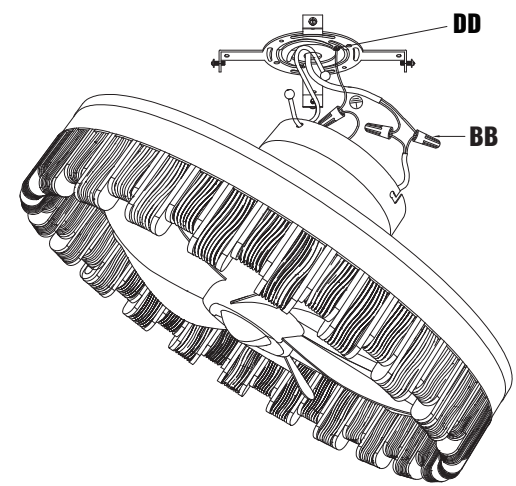
**STEP 1:** Loosen and remove the set screws (HH) from the round holes of canopy (A), and loosen the set screws (HH) in the 'L' holes but do not remove them, and then remove the mounting bracket (AA) from canopy (A).  
**STEP 2:** Mark and drill screw holes in the ceiling, then insert the large plastic anchors (II).  
**STEP 3:** Take off the screws from the outlet box, and secure the mounting bracket (AA) onto the box with the screws taken off or outlet box screw (FF).  
**STEP 4:** Tighten the mounting bracket (AA) with the flat washer (GG) and long wood screws (EE).

2.Hang the Fan



Hang the fixture body (B) onto the mounting bracket (AA) with 'S' hook (CC) provided.

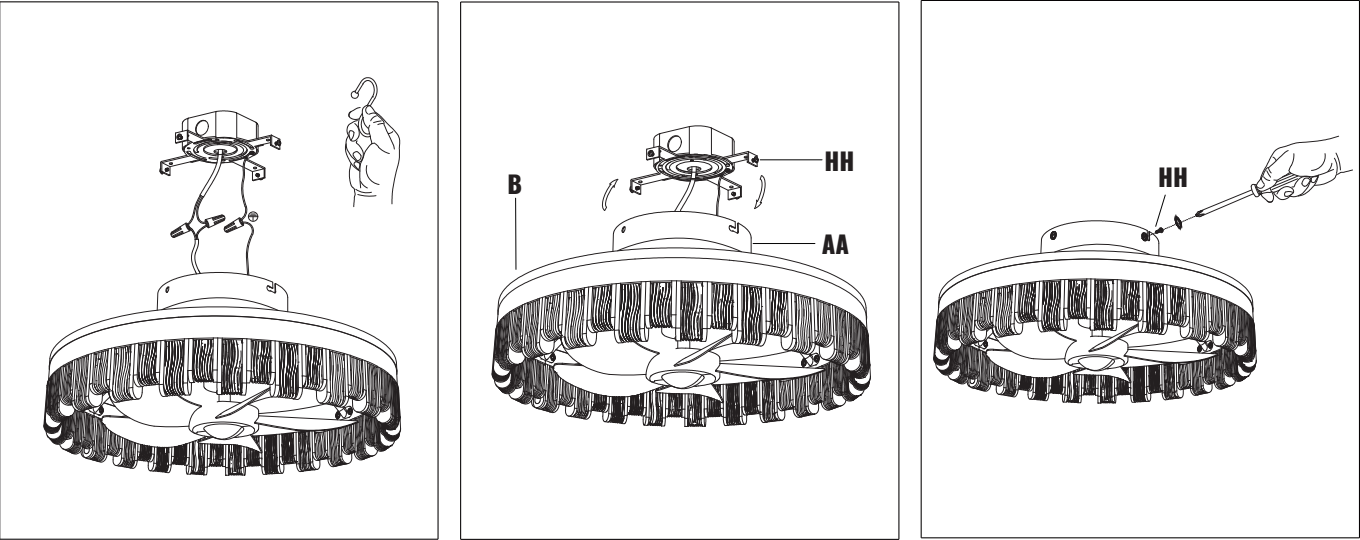
3.Connect the Wires



- STEP 1:** Wrap the ground wire from the outlet box around the ground screw (DD) on the mounting bracket (AA), and then connect the ground wire from the fixture to the ground wire from the outlet box.
- STEP 2:** Connect the wires from the fixture to the house supply wires with wire nut (BB), neutral wire (white) to neutral wire, and hot wire (black) to the hot wire. Wrap the connection with electrical tape.
- STEP 3:** Spread apart the wires so that the hot wires are on one side of the outlet box and the neutral wires are on the other.

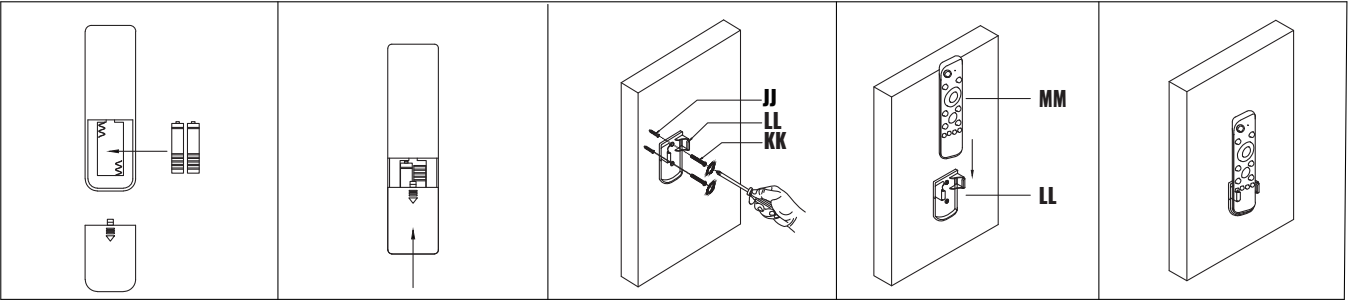
**Note:**  
This fan only needs one set of input wires (black, white, and ground wire). Both of the fan and lights will be controlled by the remote controller.  
This fan can only be connected to an on/off switch if you have one, not a dimmer switch.

4.Attach the Canopy



- STEP 1:** Take away the "S" hook (CC).
- STEP 2:** Align the 'L' slots from the canopy (A) to the set screws (HH) on the mounting bracket (AA), rotate the canopy (A) to lock it onto the mounting bracket (AA).
- STEP 3:** Tighten the set screws (HH).

5.Install the Remote Control and Holder



- STEP 1:** Insert 2 batteries before using: AAA 1.5V battery x 2pcs (not included).
- STEP 2:** Mark and drill screw holes in the wall, then insert the small plastic anchors (JJ).
- STEP 3:** Use short wood screw (KK) to fix the remote holder (LL) onto the wall.

6.Remote Control Instructions

		Turn off the fan and lights
		Turn on/off the lights.
		Fan moves forwards or reversely.
		Turn on the fan on 1/2/3/4/5/6 speed
		Turn on/off the fan.
		Adjust the light color temperature
		Adjust the brightness of the light
		Quick switch of the light color: warm light →cool light →white light
		Night mode, dim the lights
		Natural Wind
		2H/4H for timing the fan.
		<b>REMOTE SIGNAL PAIRING:</b> If the remote control loses signal of the fan, press and hold the button at the very beginning after it's turned on from wall switch. After the fan light flashes or beeps, it's done.

**NOTE:**  
Please insert 2 batteries before using: AAA 1.5V battery x 2pcs (not included).