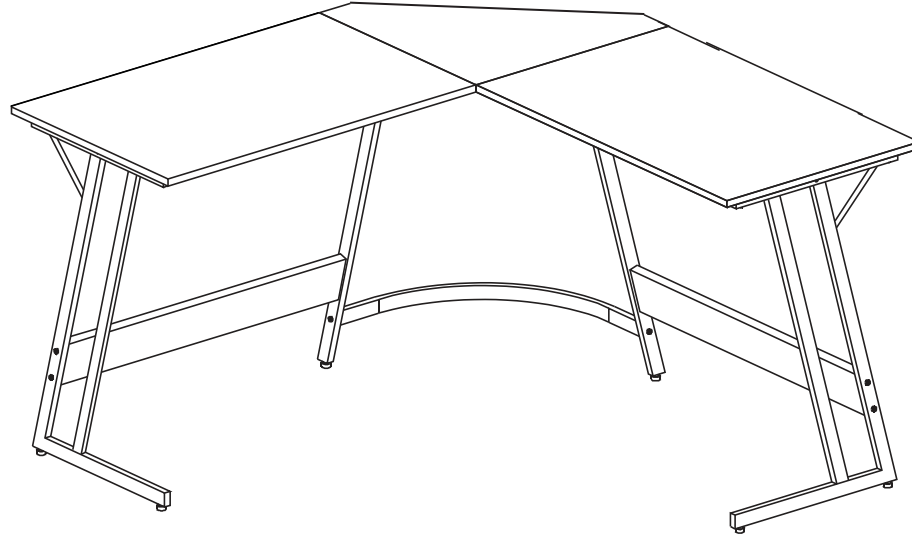



ASSEMBLY INSTRUCTIONS

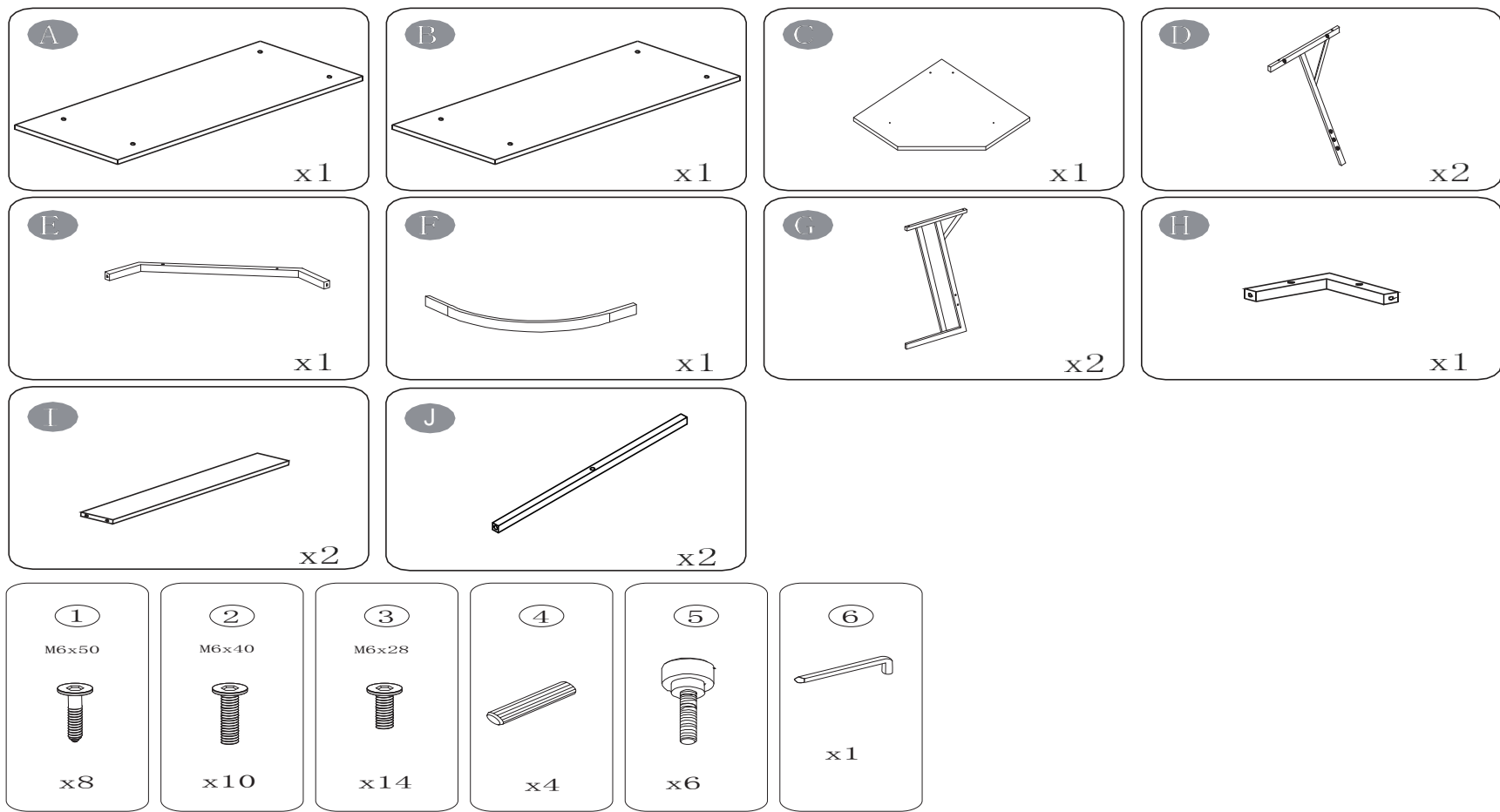


L Shaped Desk

 Please read the instructions strictly, please assemble this table according to the instruction assembly order

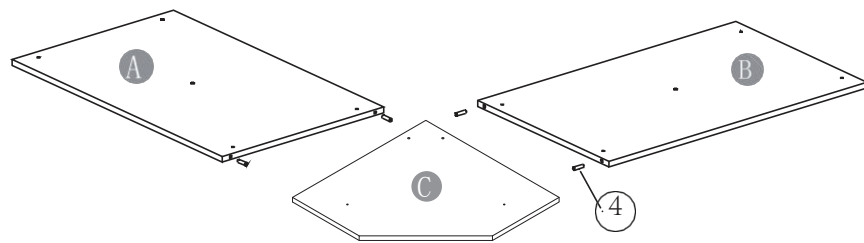
Important

- 1.It is recommended assembly is carried out by two people.
- 2.Read the instructions carefully in advance and strictly observe the steps of the instructions when assembling. Don't use the item before 100% assembly.
- 3.For a smooth assembly process, we suggest you keep a lite tightness for all the screws during assembly. After the whole desk is assembled, firmly tighten all the screws.
- 4.For any damage or defective parts, kindly contact our online after-sale service.



Note that the table top can only be fixed with silver screws③

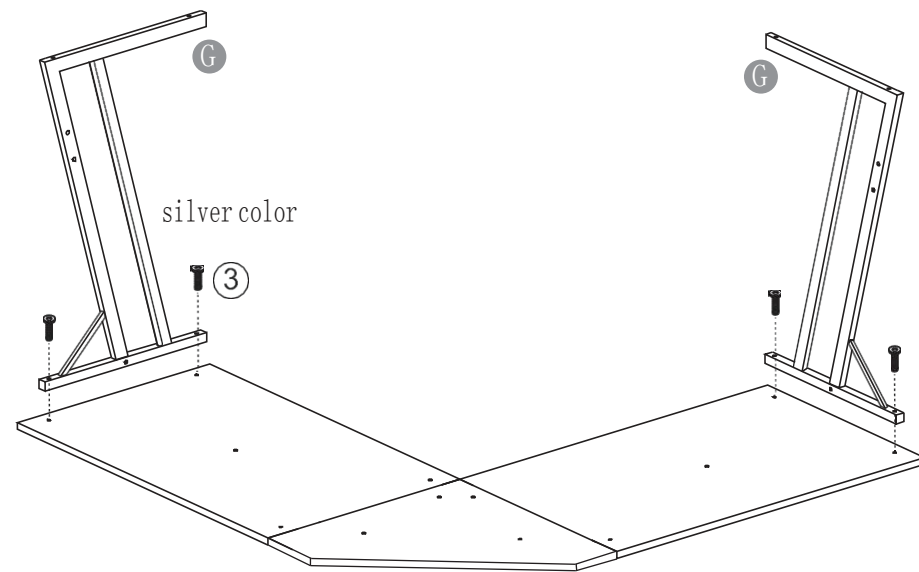
Step 1



④ x 4

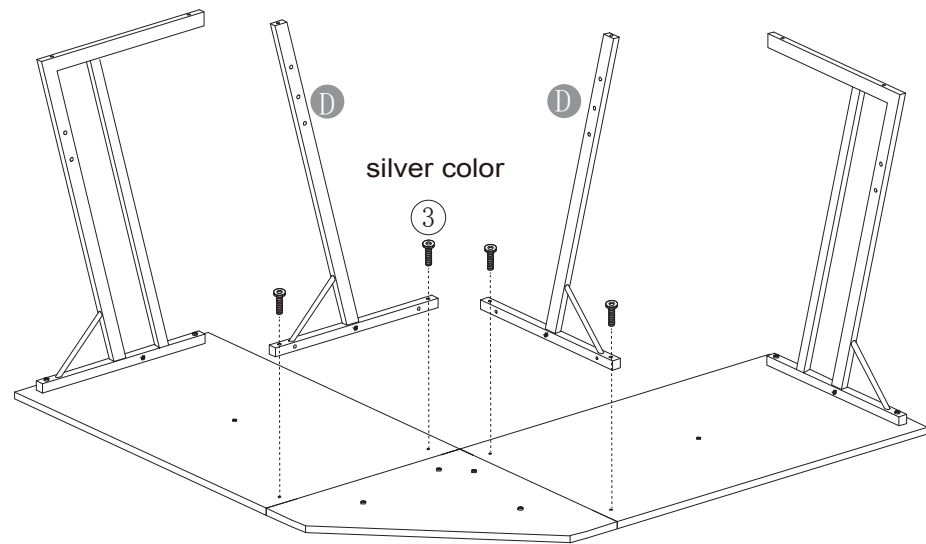
Step 2

Note: Do not lift or shake the table legs after connecting the legs to the table top!



③ x 4

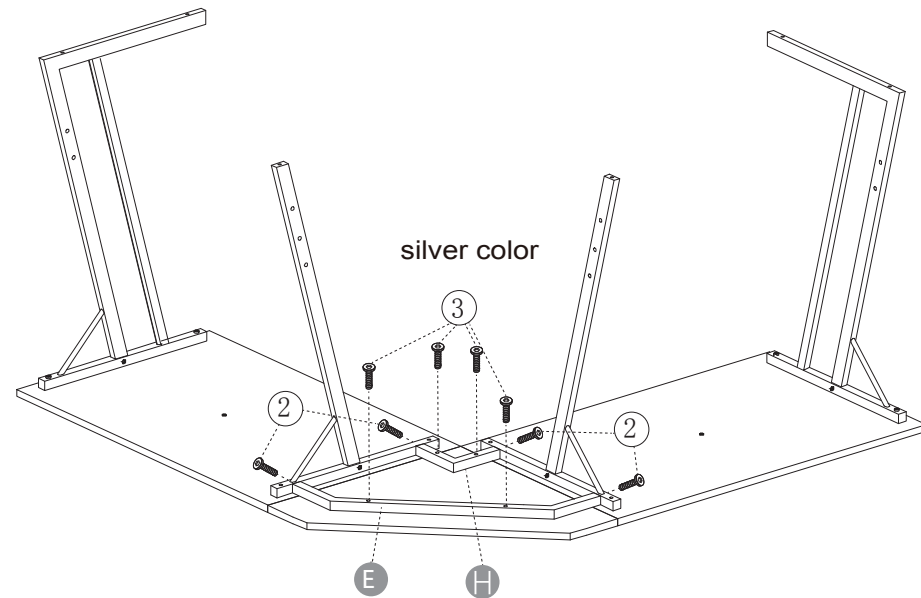
Step 3



③ x 4

Step 4

Note: Do not lift or shake the table legs after connecting the legs to the table top!



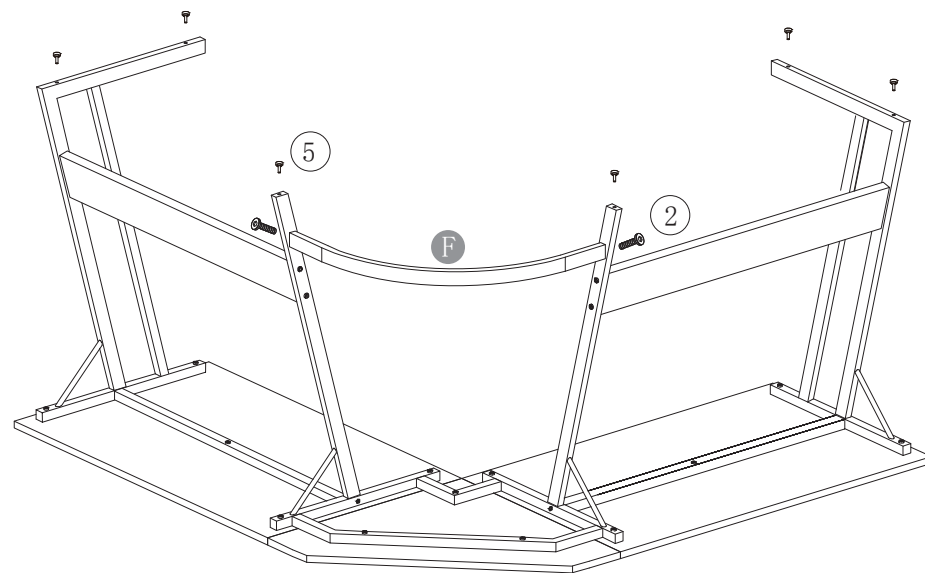
Notice: Fix the No.2 screws firstly,
then assemble the No.3 screws.

② x 4

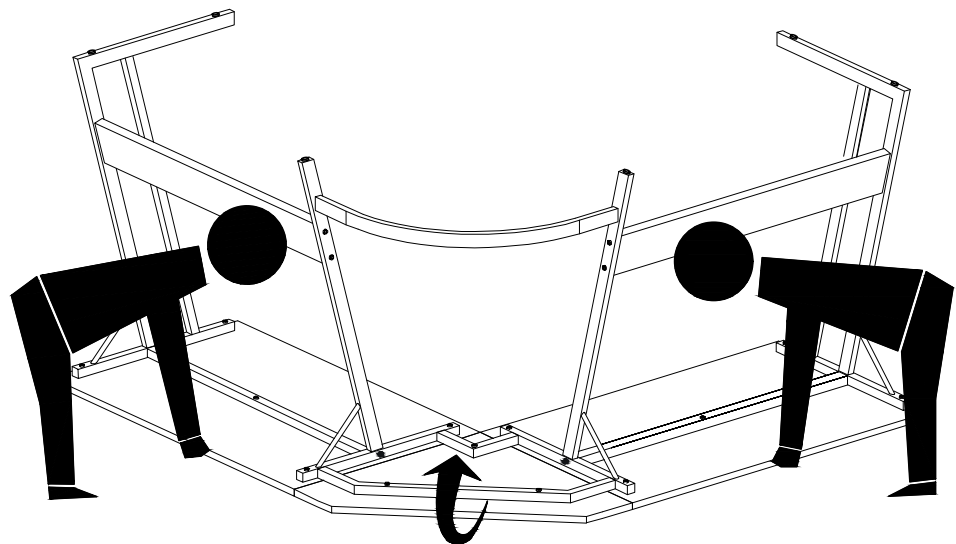
③ x 4

③ $\times 2$

Note: Do not lift or shake the table legs after connecting the legs to the table top!


$$\textcircled{5} \times 6$$

Step 5



Step 6

Note: After all the screws are tightened, it is recommended that two people hold the table legs and the table top to turn the entire table at the same time!

