

**Assembly Instructions**  
**IMPORTANT – READ CAREFULLY –**  
**RETAIN FOR FUTURE REFERENCE**

# Bromley Double Loft Bunk Bed

## Safety First !

The top surface of the mattress must not be above the line ,marked on the frame (Maximum height: 20cm). The size of the mattress required is detailed below:

Small 4ft Double: Mattress size 120cm by 190cm

Standard 4ft 6 Double: mattress size 137cm by 190cm

High beds and the upper bed of a bunk bed are not suitable for children under six years due to risk of injury from falls.

Be aware of the danger of young children (under 6) falling from upper bunk.

Beds should not be used if any structural part is broken or missing.

Bunk beds and high beds can present a serious risk of injury from strangulation if not use correctly. Never attach or hang items to any part of the bunk bed that are not designed to be used with the bed, for example, but not limited to ropes, strings, cords, hooks, belts and bags.

Children can become trapped between the bed and the wall, a roof pitch, the ceiling, adjoining pieces of furniture (eg cupboards) and the like. To avoid risk of serious injury the distance between the top safety barrier and the adjoining structure shall not exceed 75mm or shall be more than 230mm.

Always ensure that guardrails, ladder and other components are maintained in the proper position and free from damage, and all the screw fixings tight.

Always use the ladder for entering and leaving the upper bunk.

Do not allow horseplay on or under the bed and prohibit jumping on the bed.

Use a nightlight as an added safety precaution for persons under the upper bunk.

Use guardrails on both sides of the upper bunk.

Every bedroom must have at least one opening window. Ventilation of the room is necessary in order to keep the humidity low and to prevent mould in and around the bed.

**The bed complies with BS EN 747-1: 2012+A1 :2015 safety standards**

# Packing Note:

	Description	Required
2A	Long Side rail	<input type="text" value="2"/>
5C	Long Centre Rail	<input type="text" value="2"/>
2A	Top Long Back Guard Rail	<input type="text" value="1"/>
2A	Bottom Long Back Guard Rail	<input type="text" value="1"/>
2A	Long Celeste Back Bottom Guard Rail	<input type="text" value="1"/>
3A	Front Top Long Guard Rail	<input type="text" value="1"/>
3A	Front Bottom Long Guard Rail	<input type="text" value="1"/>
7B	Part 11 - Guard rail Support	<input type="text" value="2"/>
	Part 11A	<input type="text" value="1"/>
6E	Celeste Ladder Struts	<input type="text" value="2"/>
4D	Red Headboard Facia	<input type="text" value="2"/>
4D	White Headboard	<input type="text" value="2"/>
4D	Blue Headboard Facia	<input type="text" value="4"/>
6C	Ladder Steps	<input type="text" value="4"/>
	FIXING KIT	<input type="text" value="1"/>

# Fixing List

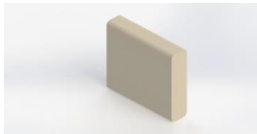
Note: The quantities below are the correct amount to complete the assembly. In some cases more fittings may be supplied than required.



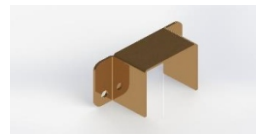
Fixing A1  
Small sachet of glue for bolts B & C (NOT dowels)  
Number Required 1



Fixing H  
90mm ladder silver hook  
To connect ladder to bunk  
Number required 2



Fixing A2  
70mm square wooden rail or base slat spacer  
Number Required 1



Fixing J  
35mm gold bracket  
Used to hold centre rails  
Number required - 4



Fixing A  
40mm by 10mm Wooden Dowel  
Used to connect parts  
Number required - 57



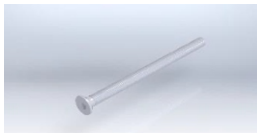
Fixing K  
Allen Key  
To connect bolts  
Number Required 1



Fixing B  
14mm Barrel bolt/Nut  
Used to connect with bolt C  
Number required 12



Fixing L  
Small silver 15mm screw  
Number Required 14



Fixing C  
90mm Connector bolt  
Used to connect with bolt B  
Number required 12



Fixing M  
45mm Long Black Screw  
Attach 11A / Front Guard Rail  
Number Required 4



Fixing D  
90mm Confirmat Bolt  
Used to connect headboards  
Number required 11



Fixing E  
32mm silver Screw  
Used to attach base slats  
Number required 30



Fixing P  
39mm Large Corner Bracket  
To bunk bed to wall  
Number Required 2



Fixing F  
50mm Confirmat Bolt  
Used to attach ladder steps  
Number required 16



White Plastic caps  
To plug spare ladder holes  
Large 6  
Small 3

# TOP TIPS - TOP TIPS

Read before you start assembly



## Locating the Dowel Rods

To keep the bed from rattling all the dowel holes have been slightly mis-drilled by a couple of mm. When you push parts together the dowels will straighten and pull together to ensure a tight fit. Whenever you locate a dowel on the hole NEVER push it all the way in, leave it so it is loose and can be aligned with the second locating hole.

Push them all the way in and they will not line up.



## GLUE SACHET INCLUDED

We have included a sachet of glue.

THIS IS NOT TO BE USED with the dowel rods.

Open the sachet and empty into a plastic container.

Whenever you connect a confirmat bolt (D) or a connector bolt (B) into a barrel bolt (c) dip the end of the bolt in the wood glue and screw in as normal. This will act as a lock tight and prevent the bolt from working loose.



## Clean out the Pre-drilled Holes

You have brought a solid pine product. During the drilling process there may be sawdust still in the holes.

BEFORE you start assembly clear these holes with one of the bolts. Push the bolt through each hole, this will dislodge any sawdust or debris that could interfere with fixing the bed.

## Applying a Finish to the Beds

The bed can be used in a natural form. However if you are applying a stain or finish we advise that you build the bed first.

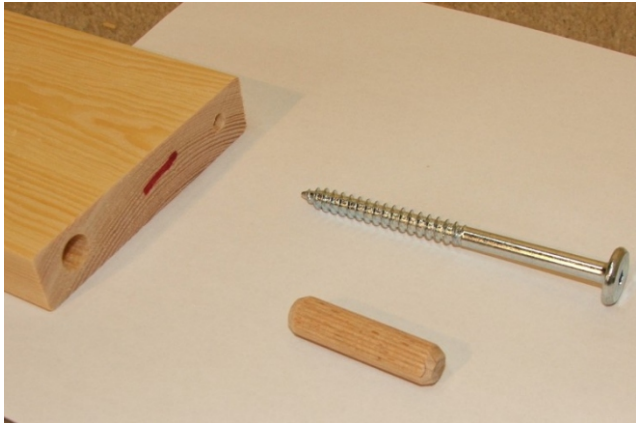
When you are happy with your purchase then put a sheet under the product and apply your stain/paint to the manufacturers recommendations.

NOTE: we are unable to accept the return, under any circumstance once a finish has been applied. By painting the bed you have deemed to accept the quality.



## How to identify your parts and fixings

All our products you four main attachment methods. These three methods are colour coded, at the end of each part you will find a marker pen marking either RED, WHITE or BLUE.



### RED MARKING/FIXINGS

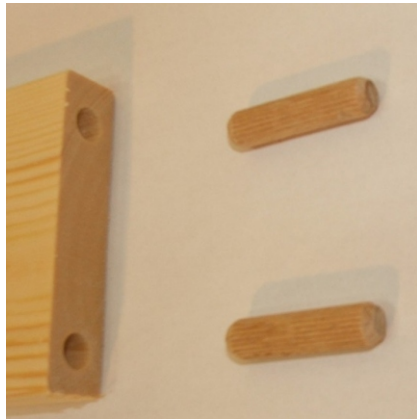
The part will have a red marker pen marking on the end.

Hole / Bolt configuration:

- One large dowel hole - Place for large dowel
- One small hole - Place for large 90cm confirmate bolt D

Areas this method is used:

Top front and back guard rails and top headboard facia



### WHITE MARKING/FIXINGS

The part will have a white chalk marking on the end.

Hole / Bolt configuration:

- TWO large dowel holes - Place for large dowel

Areas this method is used:

Bottom front and back guard rails and centre headboard facia



### BLUE MARKING/FIXINGS

The part will have a blue marker pen marking on the end.

Hole / Bolt configuration:

- TWO large dowel holes - Place for large dowel
- One small centre hole - Place for large 90mm connector bolt C
- Facing access hole - Place for barrel bolt B bolt

Areas this method is used:

Bottom headboard facias



### SIDERAIL MARKING/FIXINGS

The part will have a blue marker pen marking on the end.

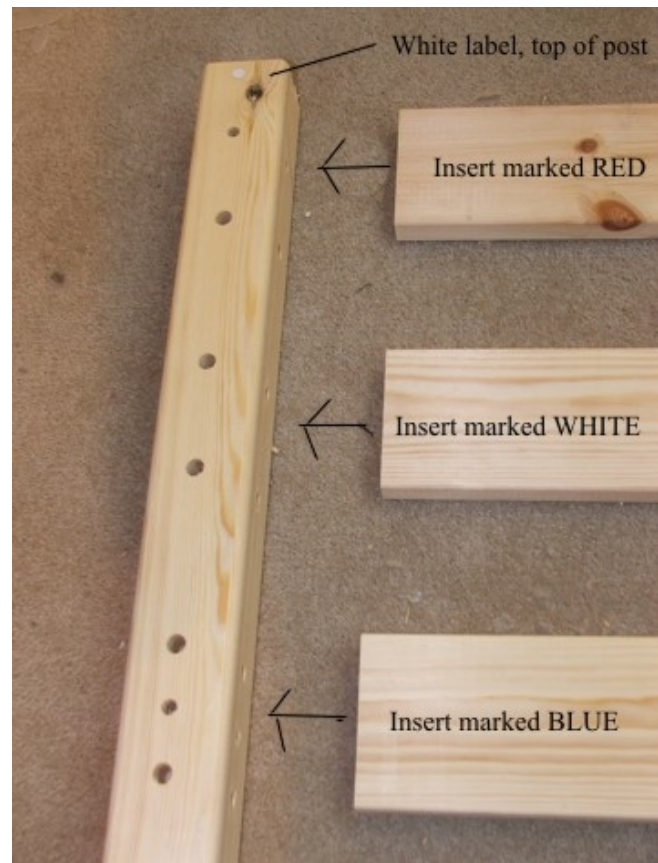
Hole / Bolt configuration:

- TWO large dowel holes - Place for large dowel
- One small centre hole - Place for large 90mm connector bolt C
- Facing access hole - Place for barrel bolt B

Areas this method is used:

All siderails

## Section : Lets build the headboards



We need to build the two headboards at either end of the bunk bed. You will find four corner posts, two marked L-left, two marked R-right.. Separate into two piles, one left and one right.

Get one post L and place to your left, R to your right and lay face down on the carpet as shown above. **You will note a white chalk mark on each post. This indicates the top of each post and the row of holes that accepts the side/ guard rails.** Make sure the white markings are at the top and facing you.

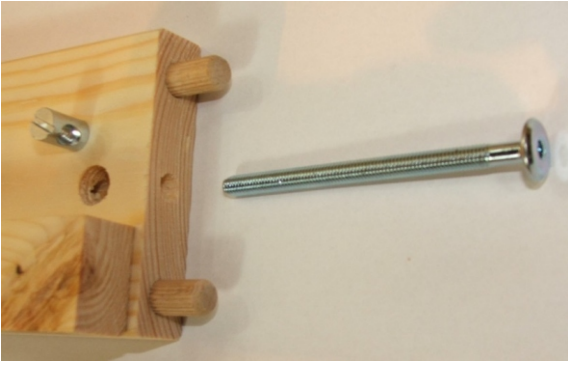
You will have three headboard inserts per headboard. These are colour coded, red (top), white (middle) and blue (bottom) Insert these as per this picture. The fixings required for each headboard insert are as follows:

Red: 1x large confirmat 1 x dowel rod

White: 2 dowel rods

Blue: 2 dowel rods 1 x connector bolt

## Section :Attach back guard and side rails



We now need to attach the two rear side rails, these are universal..

Locate the first side rail to the third set of holes from the top. Using fixings A, B & C attach to the corner posts. Now position the bottom side rail to the bottom group of holes again using fixings A, B & C. When attaching fixing C dip into the glue, this will secure the fixing when dry.

TIP- Do not fully tighten yet fixings B & C, we still need to attach the guard rails and need movement.

Now we need to attach the back guard rails

Select the bottom guard rail (part 3) marked white and attach using fixings A. Please note this has the mattress safety notice, this MUST be facing inside the bunk. Now select the top guard rail (part 2) marked red and attach using fixing A & D. Dip fixing D into the glue before fixing.

Once the guard rails have been attached now tighten the side rail fixings.

## Section :Attach bottom back support



The bottom rear of the bed requires a brace to prevent the legs from moving apart. This part is coloured coded BLACK, please attach at the same time you attach the top guard rails.

This part is called the rear bottom support brace.

This will be the same regardless of which model you have purchased.



## Section : Now build the ladder



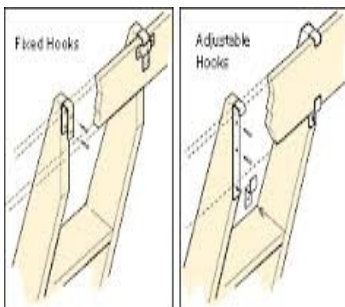
You will have two ladder struts, these need to be connected to the ladder.

When installed the ladder rungs need to be tight. The holes on the ladder struts have been mis- drilled by 2mm to ensure a tight fitting. Locate each ladder to the holes on the struts. Using the small confirmat bolt (Fixing F) dip them in the glue and push BOTH through the strut, you will note they will not quite meet the hole on the step.

To meet the holes on the step the bolts will be at an angle, this is correct. Locate these over to the holes and screw both the bolts in evenly. This is important, DO NOT tighten one at a time. Both together, The bolts will align and pull the ladder step in. This ensures a tight fixing. Complete one side then go to the next.



## Section :Fix the ladder hooks



Using the two ladder hooks now attach to the top of each ladder strut. The ladder can then be hooked over. Please note you do not want the ladder to wobble, for this reason the ladder hooks are tight.

You may need to place some cardboard over the top of the ladder hooks and knock down with a hammer. A tight fit ensure the ladder is safe.

## Section : Now fit centre rails



This bed comes with two centre rails. From the inside of the bed we need attach four metal brackets, two either end. These are fixed using the small screws (L), these are fixed to parts (blue) - third headboard fascia from the top.

Using a tape measure and pencil mark roughly a third from each corner post.. Locate the bracket and fix making sure it is flush with the bottom of the base slat. Once attached insert the centre rail.

## Section : Now we attach the base slats



You will have twelve extra wide base slats. Push the first slat tight with the footboard corner posts, then using the base slat spacer block evenly space out the remaining base slats. **DO NOT SCREW IN PLACE YET.**

Now push the slats flush to the left hand side rail and screw in (do not screw the right hand side yet). Now go to the right hand side and start with the slat near the centre. Push the side rail in so the slat is flush, then fix using the screw. This aligns the side rail. Now fix the remaining base slats.

## Section : Now we attach guard rail supports



These two rails prevent the guard rails from being forced apart, very important. Using a tape measure find the centre of the back guard rail and centre of the front guard rail.

Make a small pencil mark. Then attach each guard rail support to the front using the screws provided. These cover both the two guard rails and secure onto the side rail.

## Section : Added safety



### Important Notice-

Due to the upright design of the ladder you may need to secure the bed to prevent wobbling when is use. This is not a design fault of the bed but a result of a front access ladder. If a floor is uneven, even by 1mm it can cause a bed to rock, again the brackets will stop this.

You can stabilise the bunk bed by attaching to the wall or to your wooden skirting board. Using the corner bracket fixing P locate to the rear corner posts under the side rail or at the base of the feet.

Using the base slat screws attach to the bed. Please note we have not supplied wall fixings due to the many fixing types available. Consult your hardware store for the best type.