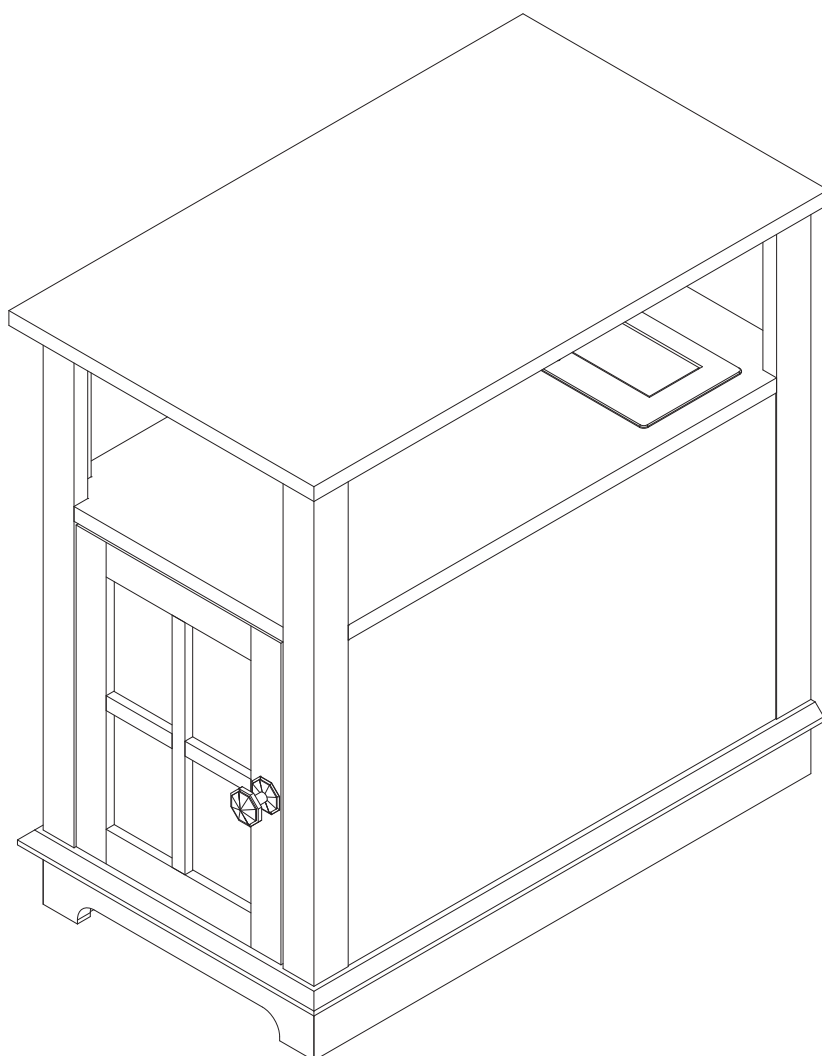


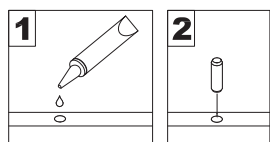
User Manual

End Tables

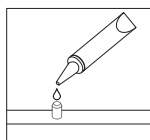


General Assembly Guidelines

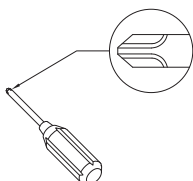
- I .Please ensure that all parts and hardware are available before assembly.
- II . Follow each step carefully to ensure the proper assembly of this product.
- III. For ease of assembly, two people are recommended to assemble this product.
- IV. The three main types of hardware are: wood dowels , screws and bolts.
- V . The glue is to secure wood dowels in place. When first inserting dowels, locate the appropriate hole for the dowel, and place a small amount of glue in the hole then insert the dowel. Please remember wipe away the excess glue immediately.



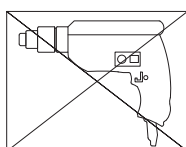
The dowels are necessary to attach assembly parts together in the following steps. Place a small amount of glue on the end of the dowel before attaching parts together. Please remember wipe away the excess glue immediately.



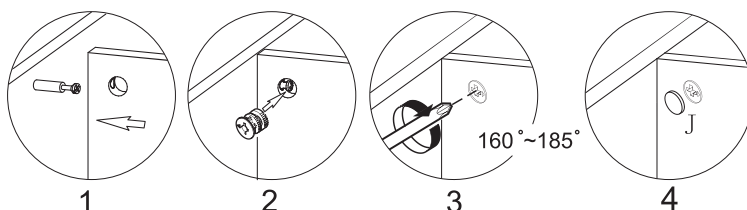
- VI. A Phillips head screwdriver is required for the assembly of this product.



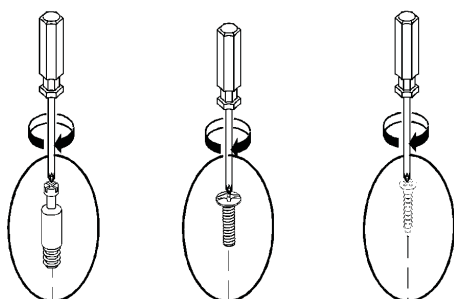
- VII. Power tools should not be used when assemble this product.



- VIII. Steps for assembly of three-in-one screws.

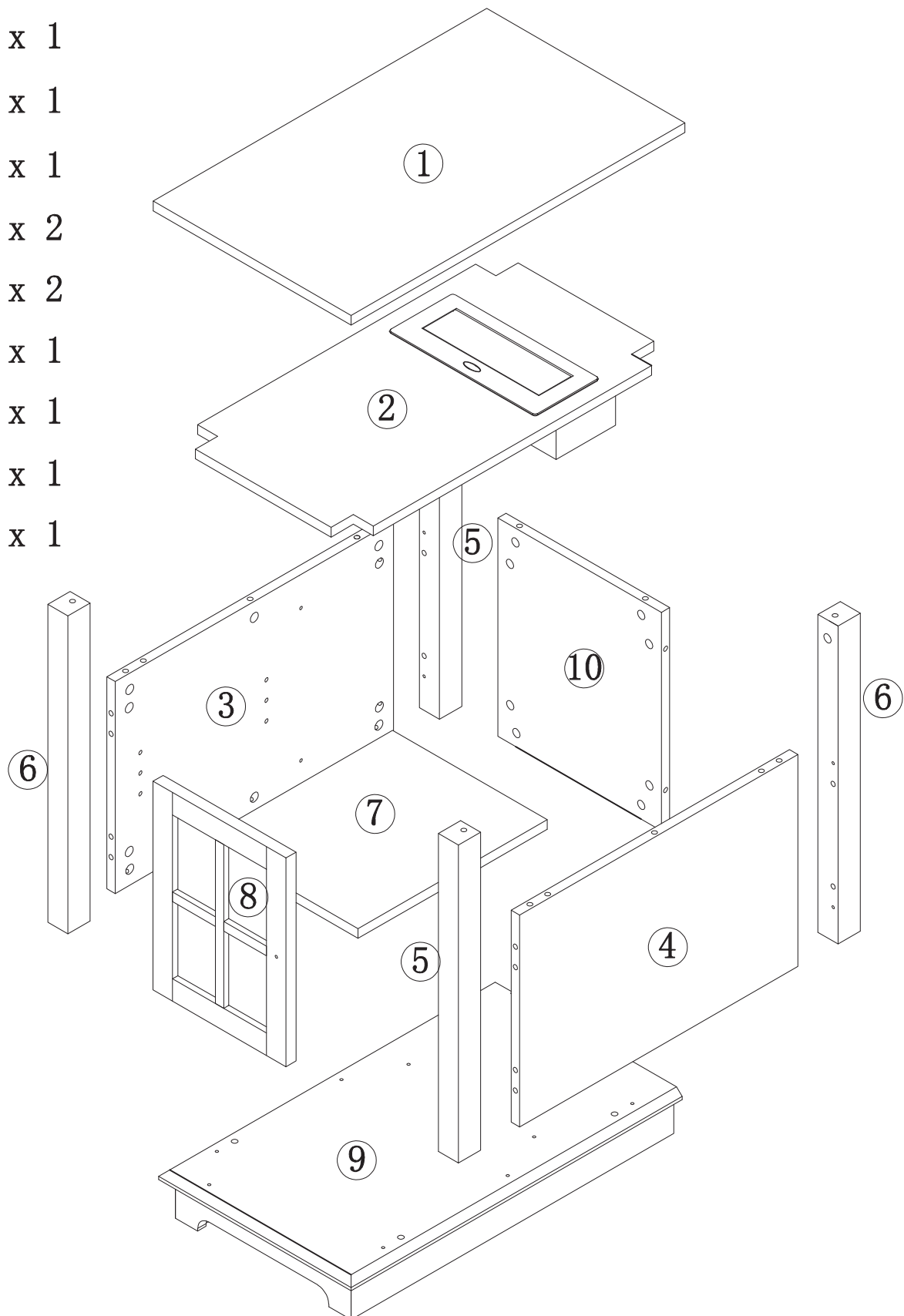


- IX. Screw fixation diagram for all fittings.

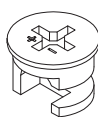


Parts List

- ① x 1
- ② x 1
- ③ x 1
- ④ x 1
- ⑤ x 2
- ⑥ x 2
- ⑦ x 1
- ⑧ x 1
- ⑨ x 1
- ⑩ x 1

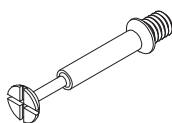


Hardware List

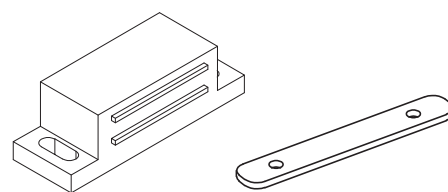


Ø15*11mm

A x 32+1pcs



B x 32+1pcs

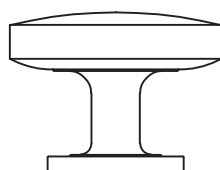


C x 1pcs +1pcs



Ø2.9*14mm

D x 4pcs

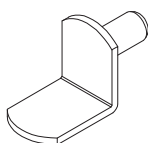


E x 1pcs

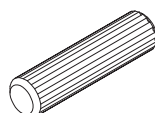


Ø5/32" *22mm

F x 1pcs

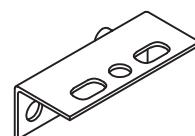


G x 4pcs



Ø8*30mm

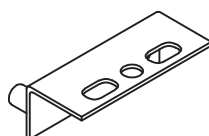
H x 16+1pcs



I x 1pcs



J x 16+1pcs

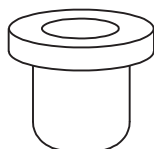


K x 1pcs

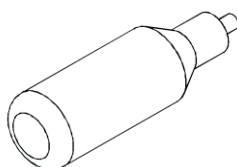


Ø3.9*15mm

L x 4pcs

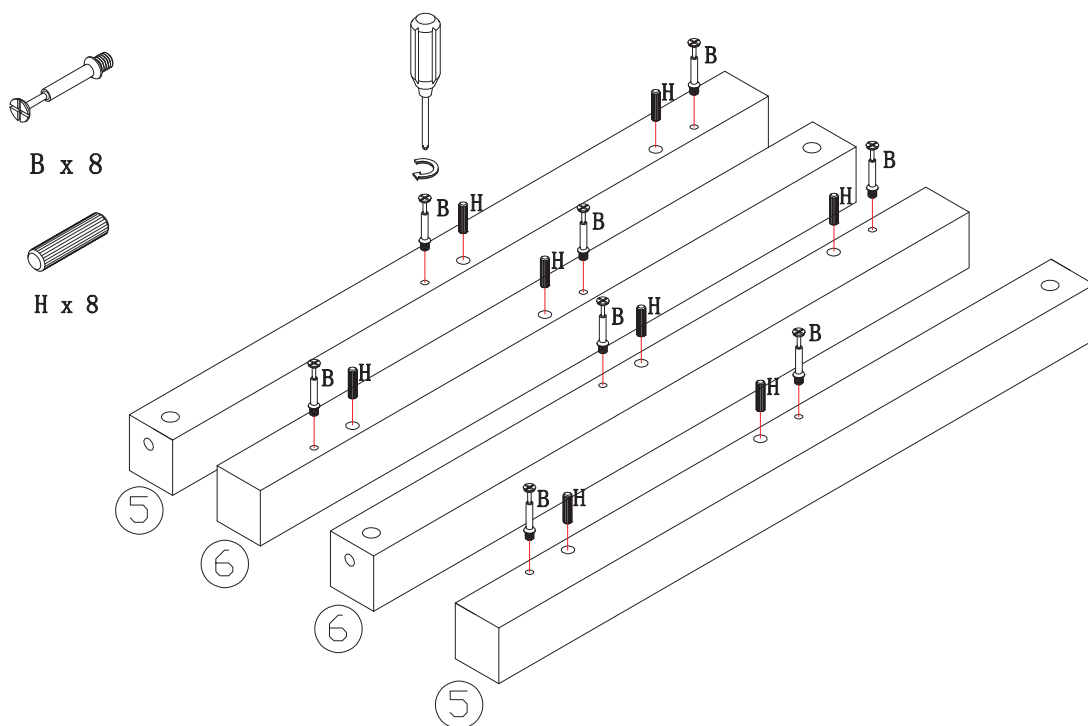


M x 1pcs

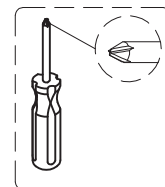


N x 1pcs

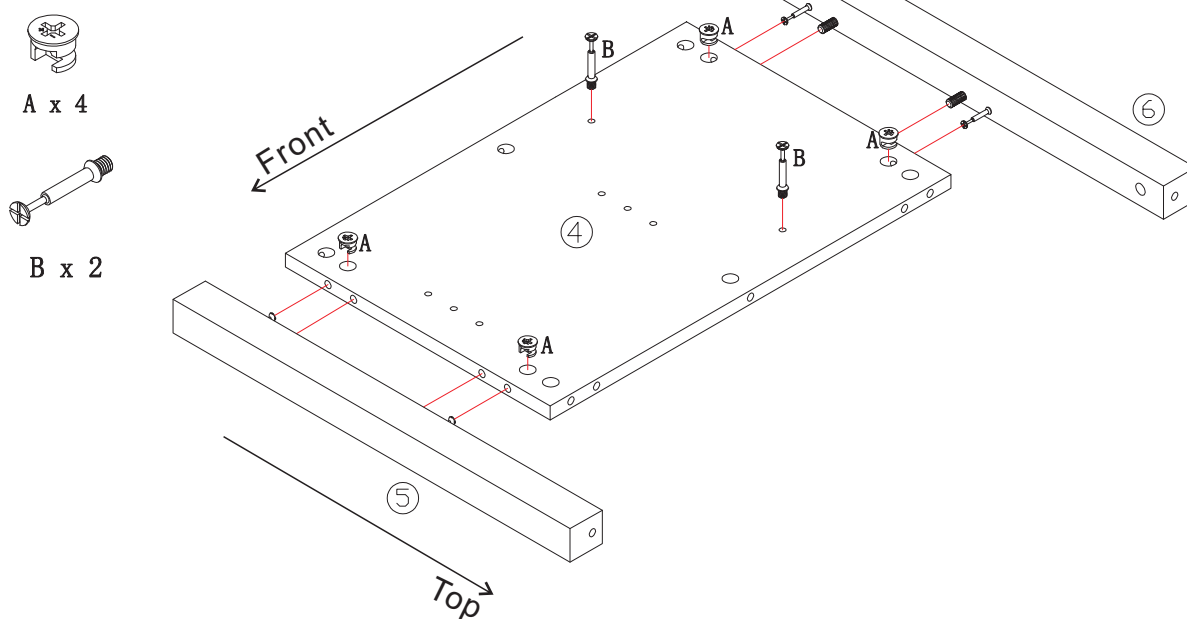
STEP#1



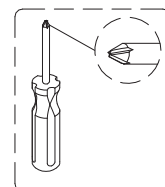
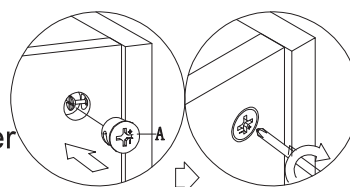
Attach (B) and (H) to parts (5) and (6).



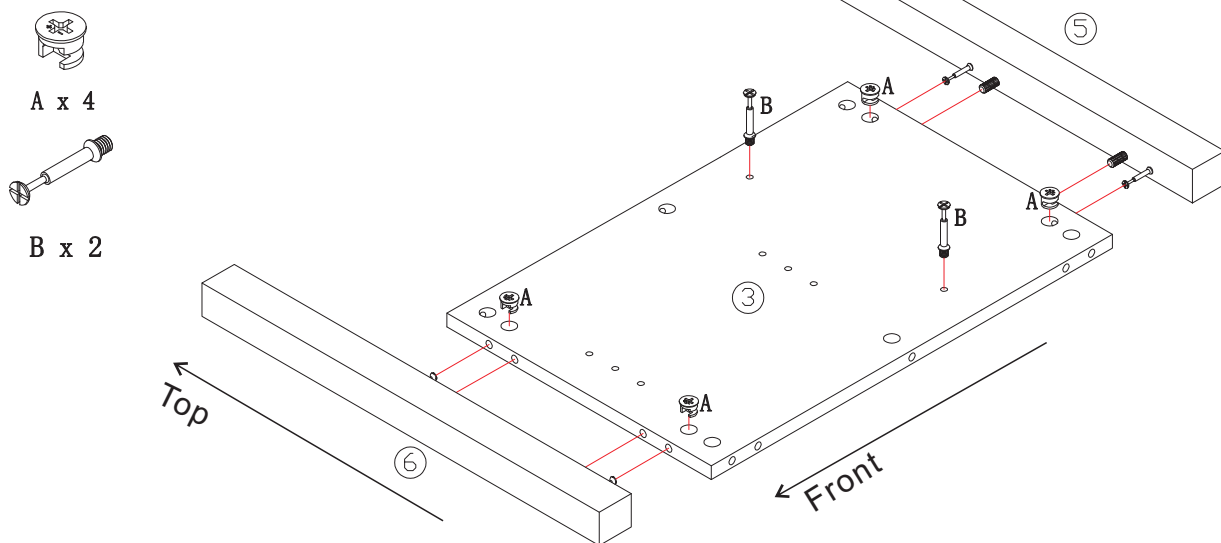
STEP#2



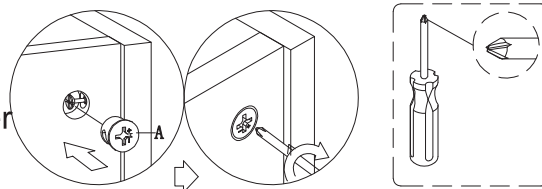
- 1, Attach parts (5) and (6) to part (4)
- 2, Attach (A) to fully assembled part (4).
- 3, Rotate (A) 160°~180° and tighten it with a screwdriver according to the following picture on the right.



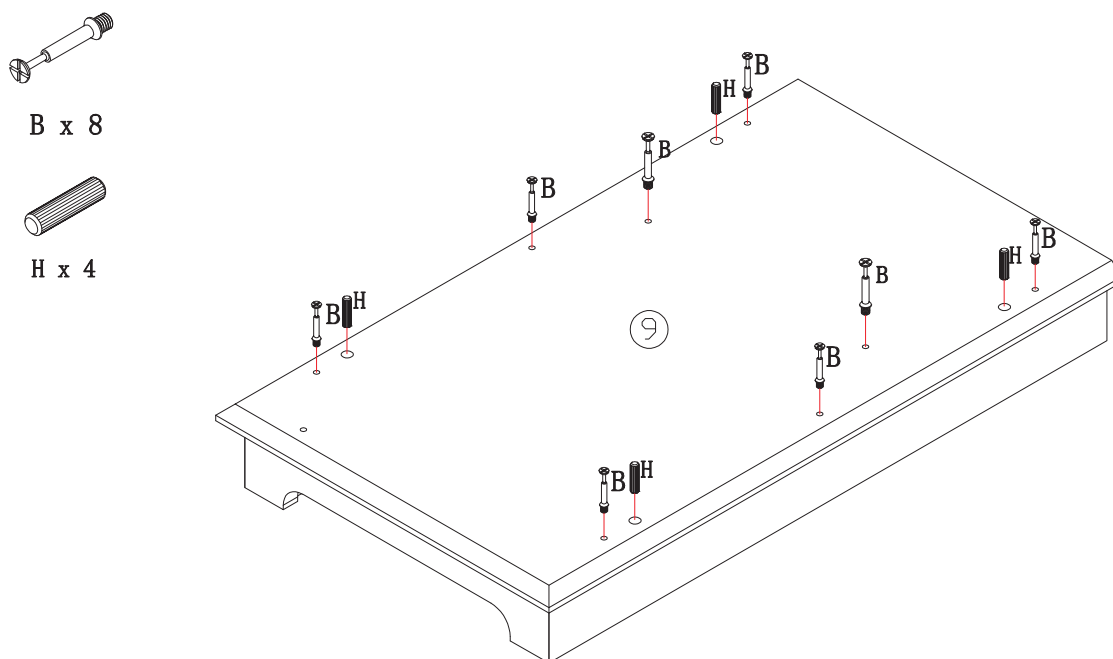
STEP#3



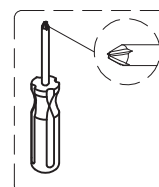
- 1, Attach parts (5) and (6) to part (3)
- 2, Attach (A) to fully assembled part (3).
- 3, Rotate (A) 160°~180° and tighten it with a screwdriver according to the following picture on the right.



STEP#4



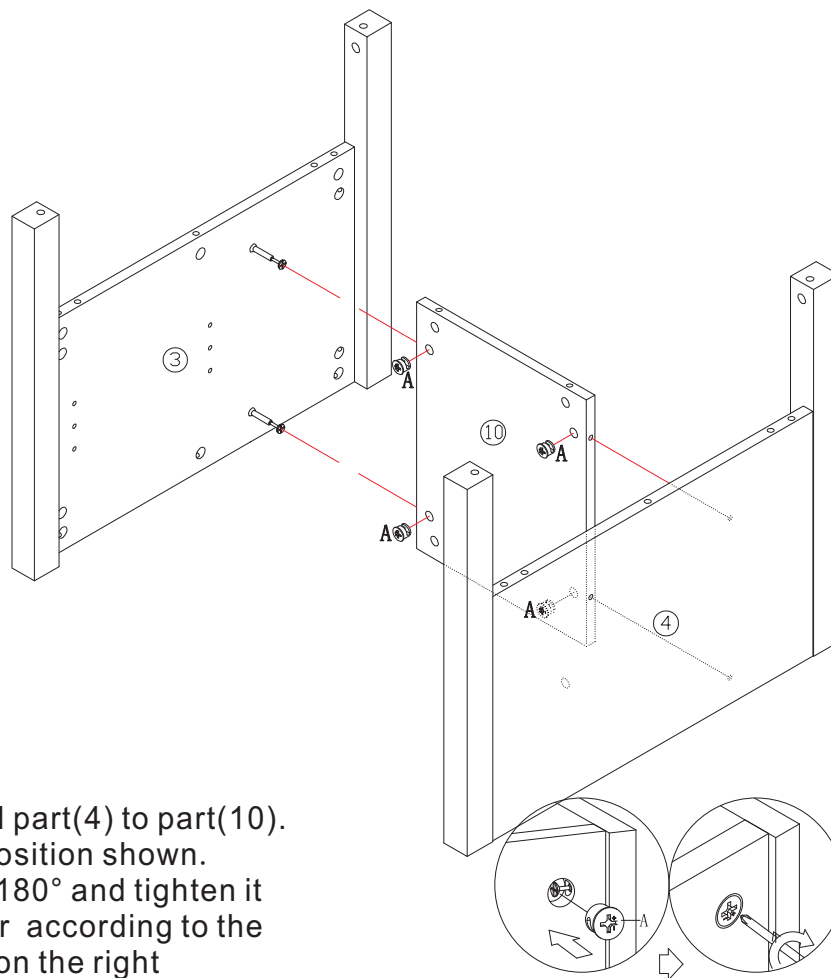
Attach (B) and (H) to parts (9).



STEP#5



A x 4

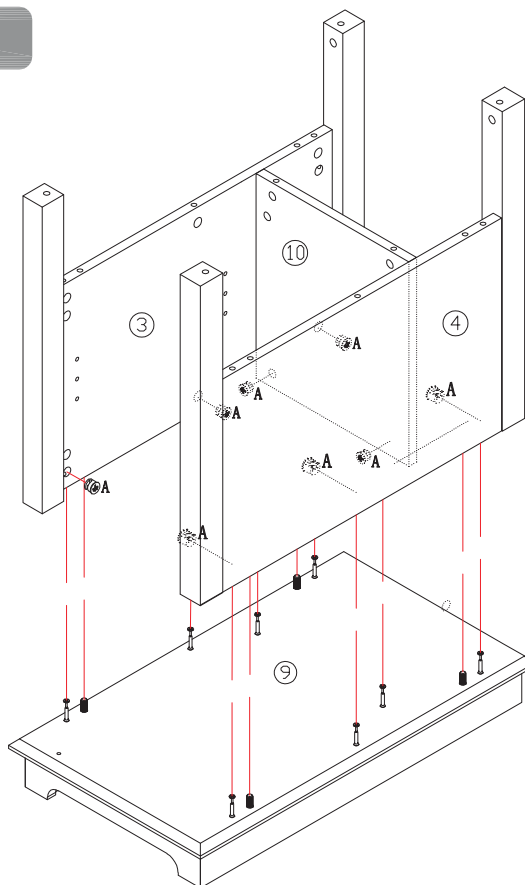


- 1, Attach part(3) and part(4) to part(10).
- 2, Place (A) in the position shown.
- 3, Rotate (A) 160°~180° and tighten it with a screwdriver according to the following picture on the right

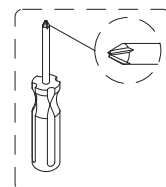
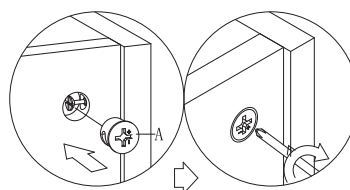
STEP#6



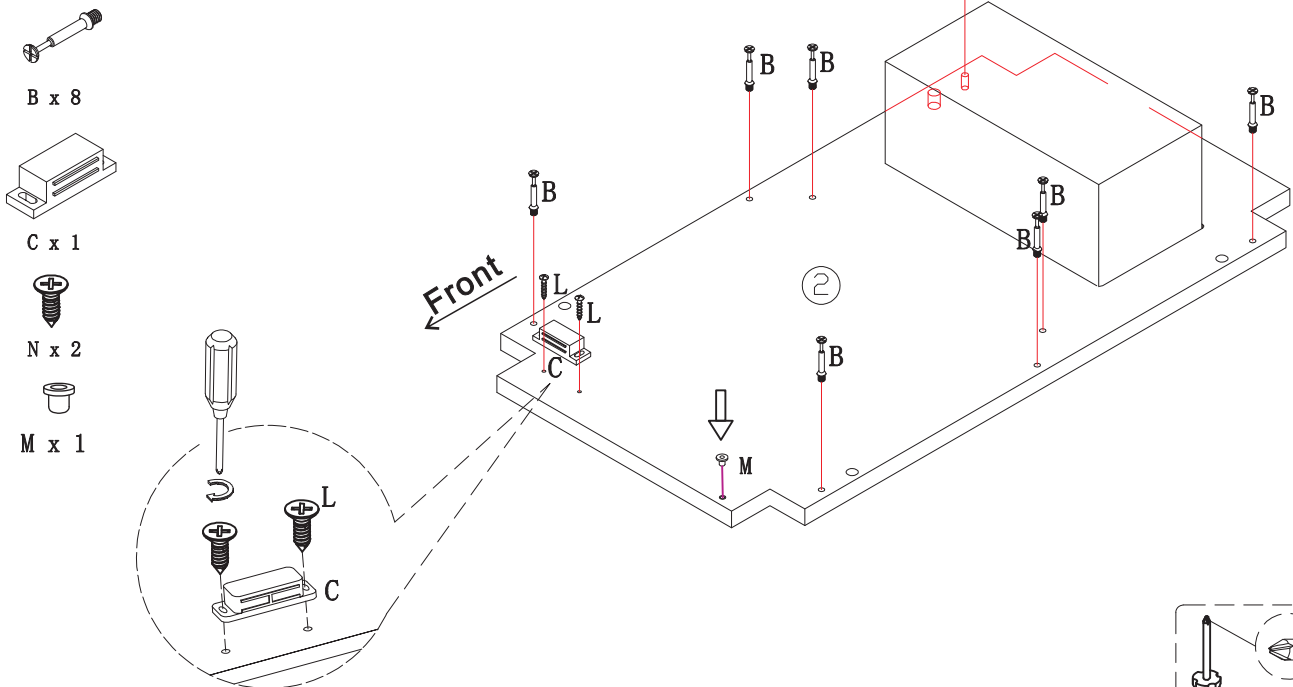
A x 8



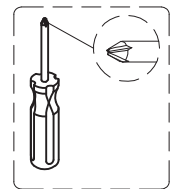
- 1, Attach part(3)(4)(10) to part(9) as shown in the figure
- 2, Place (A) in the position shown.
- 3, Rotate (A) 160°~180° and tighten it with a screwdriver according to the following picture on the bottom



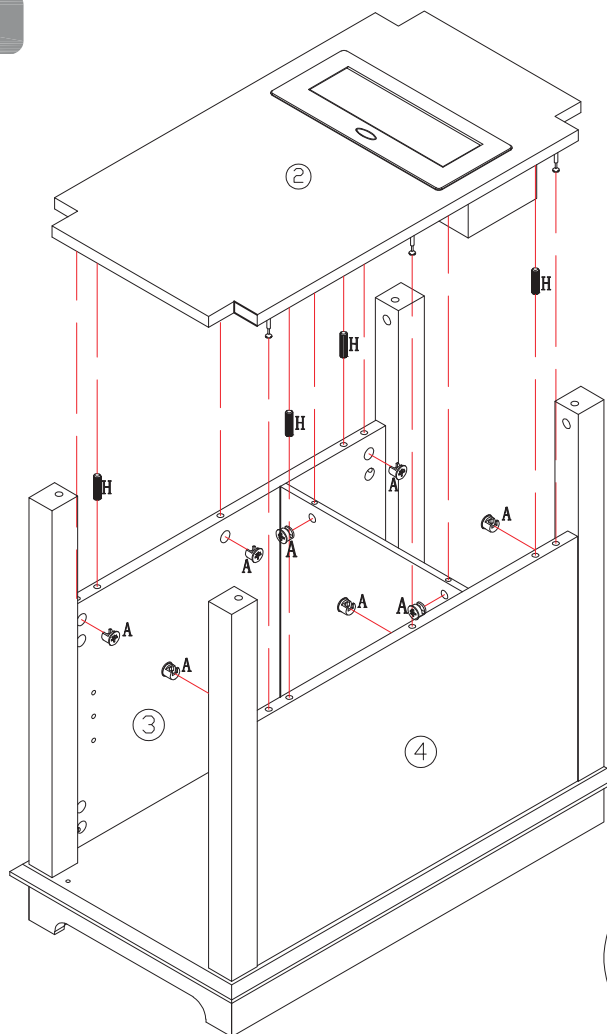
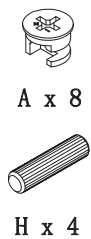
STEP#7



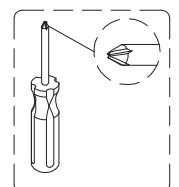
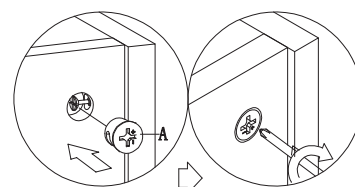
- 1, Attach (B) to part(2) as shown in the figure.
- 2, Attach (C) to designated areas by using screws (L).
- 3, Put the hinge rubber cover (M) into part(2).



STEP#8



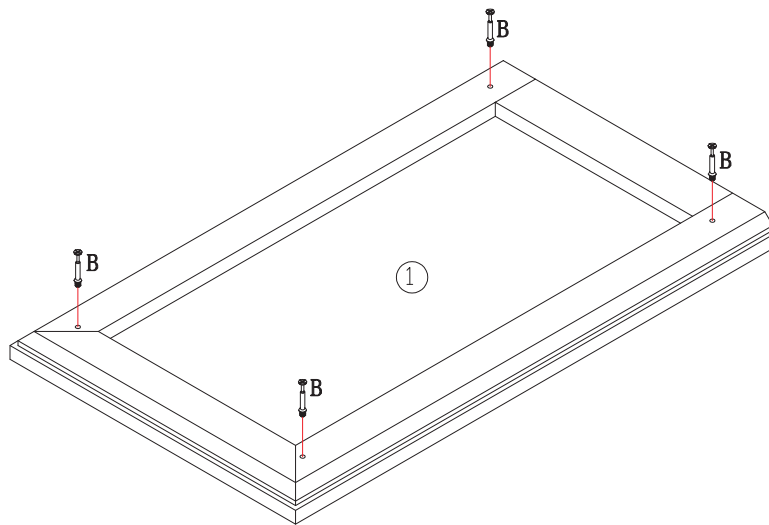
- 1, Attach (H) to part(3) and (4) as shown in the figure.
- 2, Attach part(2) to part(3), (4) and (10).
- 3, Place (A) in the position shown.
- 4, Rotate (A) 160°~180° and tighten it with a screwdriver according to the following picture on the bottom



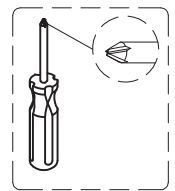
STEP# 9



B x 4



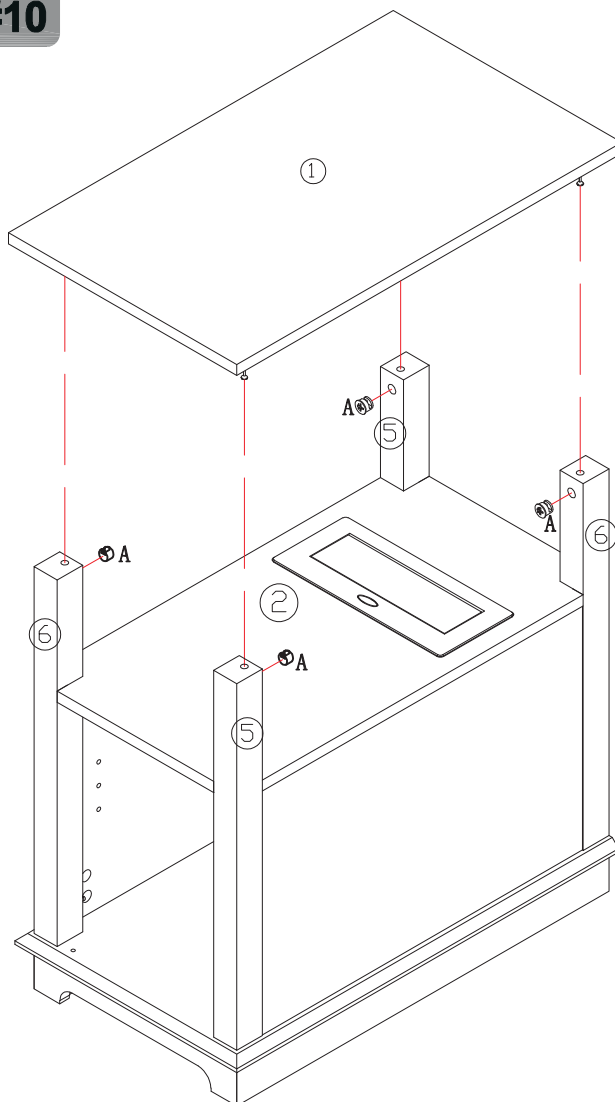
Attach (B) to parts (1).



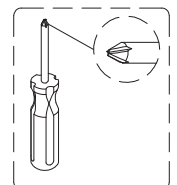
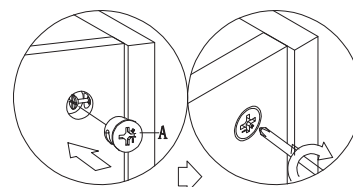
STEP#10



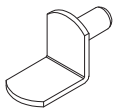
A x 4



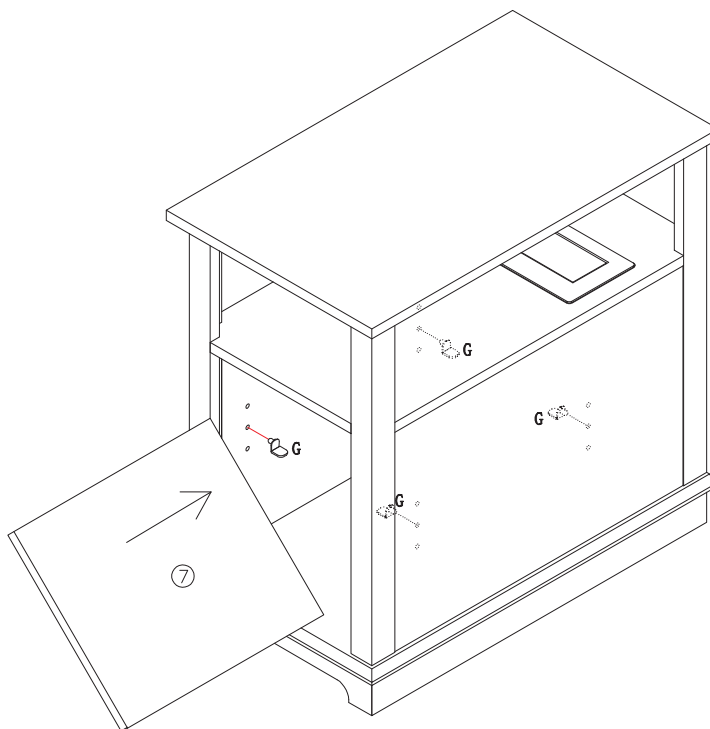
- 1, Attach part (1) to part (5) and (6).
- 2, Place (A) in the position shown.
- 3, Rotate (A) 160°~180° and tighten it with a screwdriver according to the following picture on the bottom



STEP#11



G x 4



Insert shelf supports (G) and place shelves (7) as shown in the diagram.

STEP#12



C x 1



D x 2



E x 1



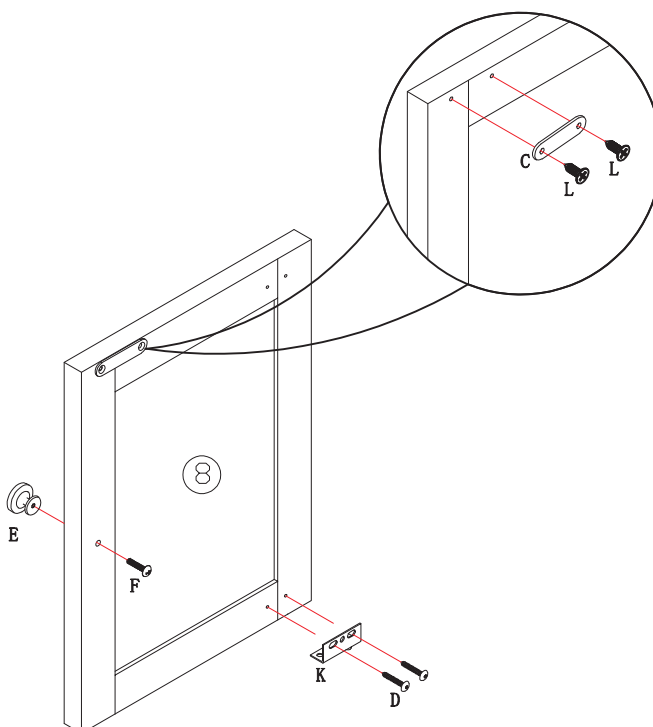
F x 1



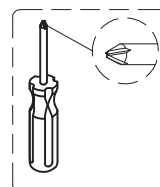
K x 1



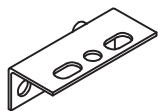
L x 2



- 1, Attach (C) to part(8) by used screw(L).
- 2, Attach (E) to part(8) by used screw(F).
- 3, Attach (K) to part(8) by used screw(D)



STEP#13



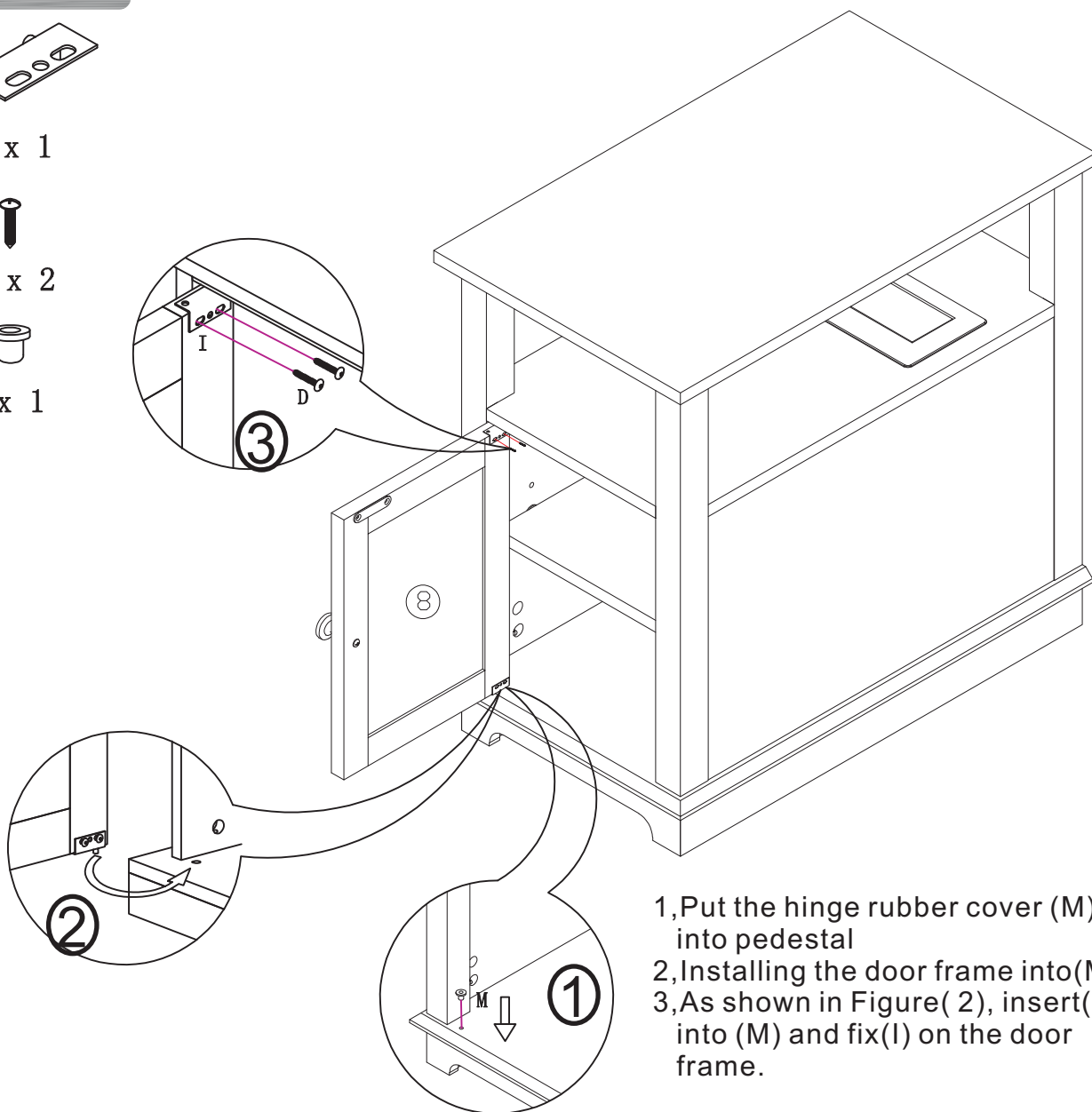
I x 1



D x 2



M x 1

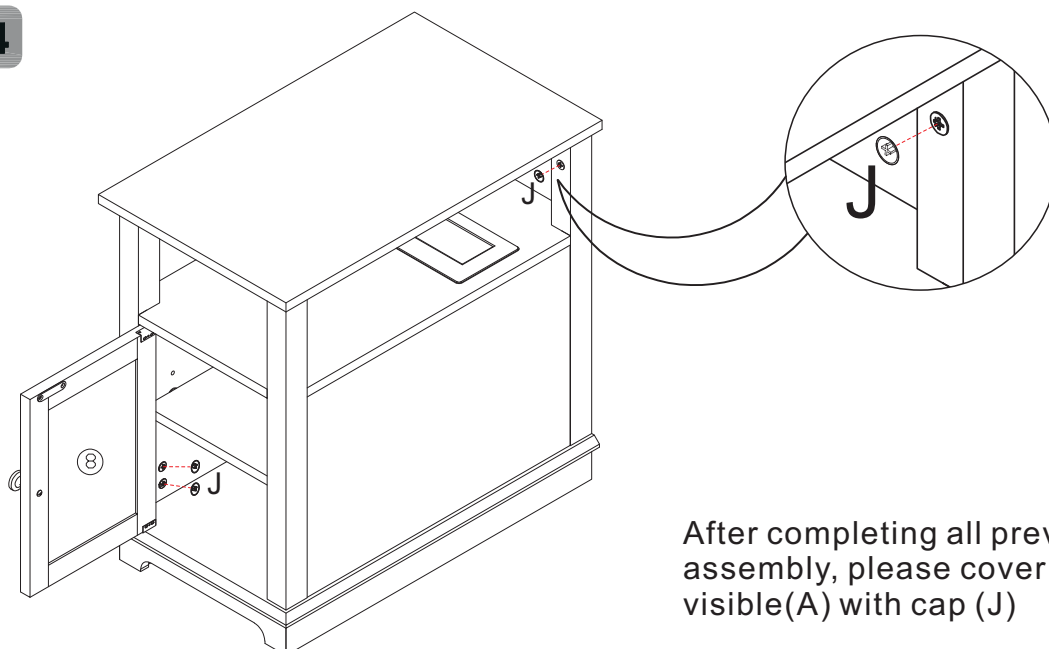


- 1, Put the hinge rubber cover (M) into pedestal
- 2, Installing the door frame into (M).
- 3, As shown in Figure (2), insert (I) into (M) and fix (I) on the door frame.

STEP#14



J x 16 pcs



After completing all previous assembly, please cover visible(A) with cap (J)

WARRANTY CARD

Your warranty includes

- **30 Days Money Back Guaranty**

Within the first 30 days of your purchase, you are allowed to return your product for a full refund.

- **30 Days to 3 Months(6 Months)**

We will replace the defective unit due to manufacturer fault with a new one. (You will receive extra 3 Months warranty if you register on our website.)

- **3 Months to 24 Months**

Within 24 Months, we will provide timely and effective online after-sales service after your purchase.