

Instruction Manual

SAVE THESE INSTRUCTIONS—This manual contains important safety and operating instructions for power units.

Product Name:	Resin Angel Outdoor Patio Fountain
----------------------	------------------------------------

Thank you for purchasing this product. This product has been manufactured with the highest standards of safety and quality.

PLEASE READ ALL INSTRUCTIONS BEFORE ASSEMBLY.

Please make sure to unpack all the components from the packaging inside the carton to ensure that there are no missing or damaged parts. Do not attempt to assemble or use the product if any parts are missing or damaged.

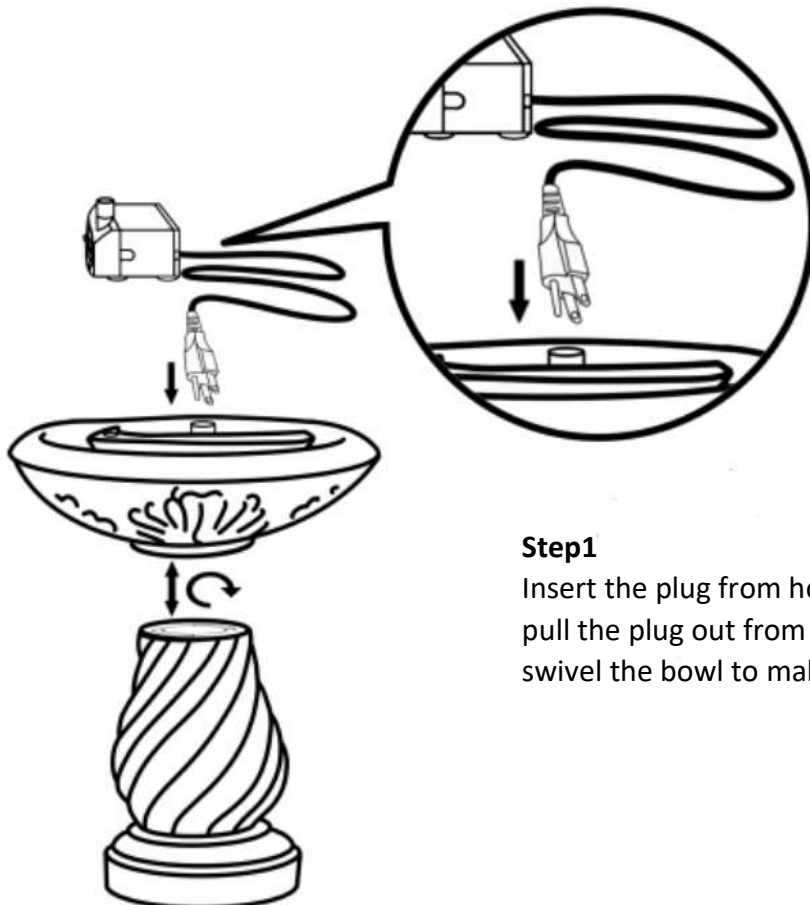
Carton Contents:

Description	Quantity
Fountain Base	1
Fountain Bowl	1
Angel and Pot	1
Pump	1

Tools required for assembly: No tools are required for assembly.

Assembly Instructions:

1. Unpack the box's contents and check to ensure that all items are accounted for and in good condition.
2. Select a flat, level surface for your fountain's assembly and final location.



Step1

Insert the plug from hole of fountain bowl to base, and pull the plug out from bottom of fountain base. Then swivel the bowl to make it fixed to the base.

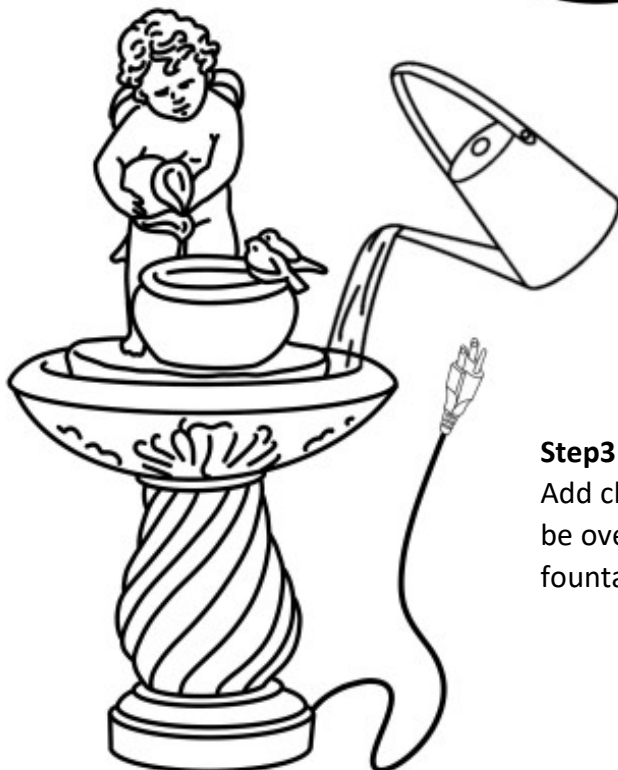
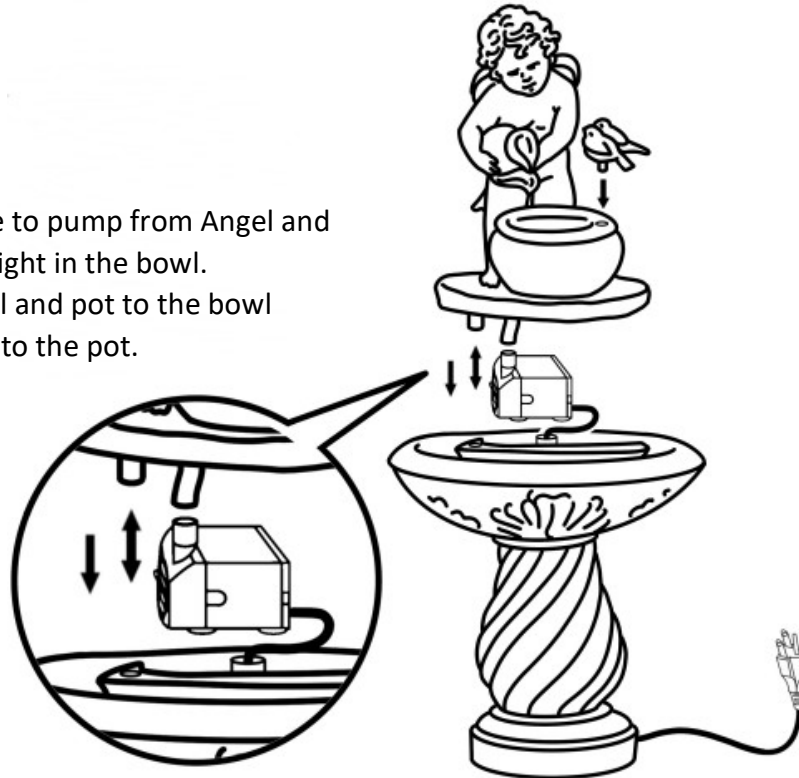
Instruction Manual

SAVE THESE INSTRUCTIONS—This manual contains important safety and operating instructions for power units.

Product Name:	Resin Angel Outdoor Patio Fountain
----------------------	------------------------------------

Step2

Attach the water supply tube to pump from Angel and pot, and place the pump upright in the bowl. Then attach the part of Angel and pot to the bowl and insert two bird figurines to the pot.



Min. Water needed: 0.5 Gallon
Max. Water needed: 0.95 Gallon

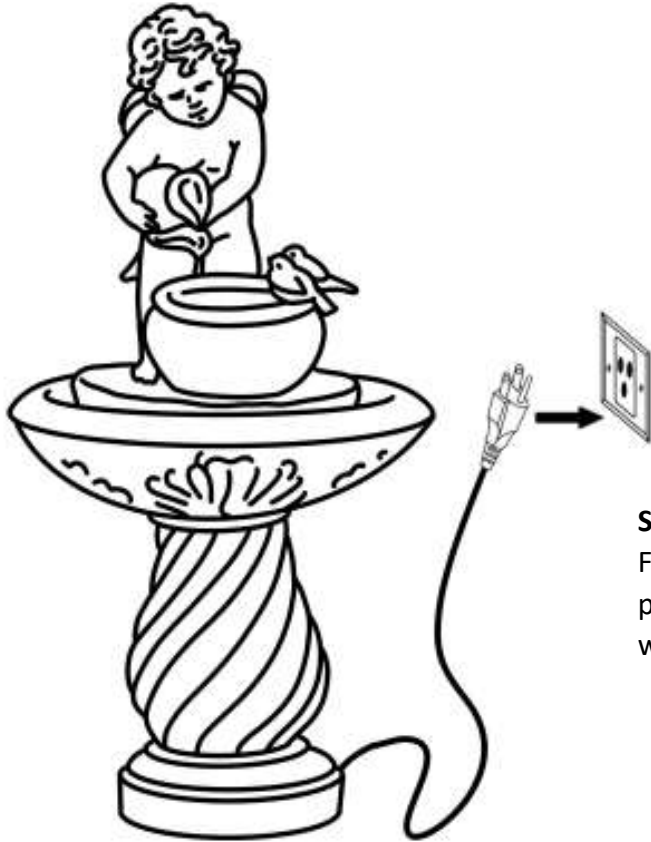
Step3

Add clean water into the reservoir. The water level should not be over the edge of the reservoir. Ensure the pump in your fountain is completely submerged in the water.

Instruction Manual

SAVE THESE INSTRUCTIONS—This manual contains important safety and operating instructions for power units.

Product Name:	Resin Angel Outdoor Patio Fountain
----------------------	------------------------------------



Step4

For safe operation, connect the pump into a properly Grounded GFCI. If installed properly, water flow in the fountain will begin shortly.

The water flow position of the pump is set by default at the maximum value to help the water flow smoothly, then adjust to your preferred level as needed. (Always disconnect before handling the pump.)

Note: The above diagram is for illustrative purposes only.

Please do not use the electrical plug during wet weather conditions.

Please note: On first use, there may be air in the pump. It may take several minutes until all the air escapes.

And please:

1. Check the area around your fountain on a regular basis to ensure that there is no leakage.
2. Please refresh the fountain with water each week to ensure it in good condition.
3. Do not add any harmful chemicals to the water as it may alter the finish.

Instruction Manual

SAVE THESE INSTRUCTIONS—This manual contains important safety and operating instructions for power units.

Product Name:	Resin Angel Outdoor Patio Fountain
----------------------	------------------------------------

MAINTENANCE OF YOUR PUMP:

- Keep the water clean – clean water will prolong the useful life of your pump.
- Use a pre-filter on your pump if available.
- Regular cleaning of the pump will be necessary depending upon the environment in which it is operated. Clean the pump when it is visibly soiled or when a noticeable drop in performance is detected. **Failure to clean the pump will result in overheating of the pump and the voiding of the warranty!**
- Before cleaning, always disconnect the pump from the power source.
- Disassemble the pump by removing the inlet screen & the impeller housing. Remove the impeller/rotor assembly by gently pulling on the impeller blades. Use a soft cloth or brush to clean the area inside the pump where the impeller/rotor assembly was. Clean the inlet screen, impeller housing & impeller in warm soapy water. Reassemble the pump and inspect it for proper operation.

MAINTENANCE OF YOUR FOUNTAIN:

- Unplug the pump from electric power before servicing, cleaning, or moving.
- Keep water clean - using clean water will reduce mineral deposits and improve water clarity.
- Clean the fountain periodically to prevent mineral deposits and contamination. Use warm soapy water and a stiff brush for heavily stained surfaces. **Do not use harsh chemicals, which will damage the finished surface and void the warranty.**
- Add clean water periodically to ensure the pump is fully submerged.
- Disconnect the power and empty the basin if the fountain will not be used for an extended time.
- If installed outdoors and in a freezer area of the country, ensure all water is removed and the unit completely dry. **This product is NOT to be operated below 41°F (5°C) freeze damage may occur.**



Special Warnings and Cautions:

CAUTION:

- The pump has been evaluated for use with water only.
- Do not use the pump in water exceeding 35°C / 95°F.
- Do not use the pump in flammable liquids.
- Do not use the pump for industrial purposes.
- Do not use the pump in vehicles, ships, aircraft, or swimming pools.
- Do not use the pump in a location where special conditions prevail, such as the presence of a corrosive or explosive atmosphere (dust, vapor, or gas).
- Do not let the pump run dry. The pump must be completely submerged for proper operation and cooling.
- Do not lift the pump by its power cord.
- Keep the plug dry. Do not expose the plug to water or steam.
- Before connecting to the power source, ensure the pump is assembled and completely submerged in water.
- Check the water level regularly to ensure the pump is completely submerged during operation. The pump should be fully submerged during operation. Do not add water while operating the product. Always disconnect the pump from the power source before adding water.

Instruction Manual

SAVE THESE INSTRUCTIONS—This manual contains important safety and operating instructions for power units.

Product Name:	Resin Angel Outdoor Patio Fountain
----------------------	------------------------------------

WARNINGS:

- To reduce the risk of electric shock, connect only to a properly grounded, grounding-type receptacle.
- To reduce the risk of electric shock, use only on portable, self-contained fountains no larger than 5 feet in any dimension.
- Do not exceed the voltage shown on the pump.
- Always disconnect the pump from the power source before beginning maintenance or work on the pump or fountain.
- Inspect the power cord for damage before installation and/or maintenance. Replace the entire pump if damage is found.
- For pumps with a 3-prong, grounded type plug, do not remove the grounding pin from the plug on the power cord.

TIPS AND TROUBLESHOOTING:

1. Ensure the pump's flow control switch is set to maximum (+) before operating. Once the flow is established, the pump can be adjusted downward to the desired level.
2. If the pump operates without flow, check to ensure the pump is fully submerged.
3. If the pump operates without flow, check the supply tubing for kinks and correct it.
4. If the pump operates, but there is no flow, and if the pump is submerged and there are no kinks in the supply tubing, lift the pump from the water. Remove supply tubing at the pump outlet and clean tubing inside and out if necessary. Reset the pump in water (outlet side up) and once water begins to flow, re-attach the supply tubing.