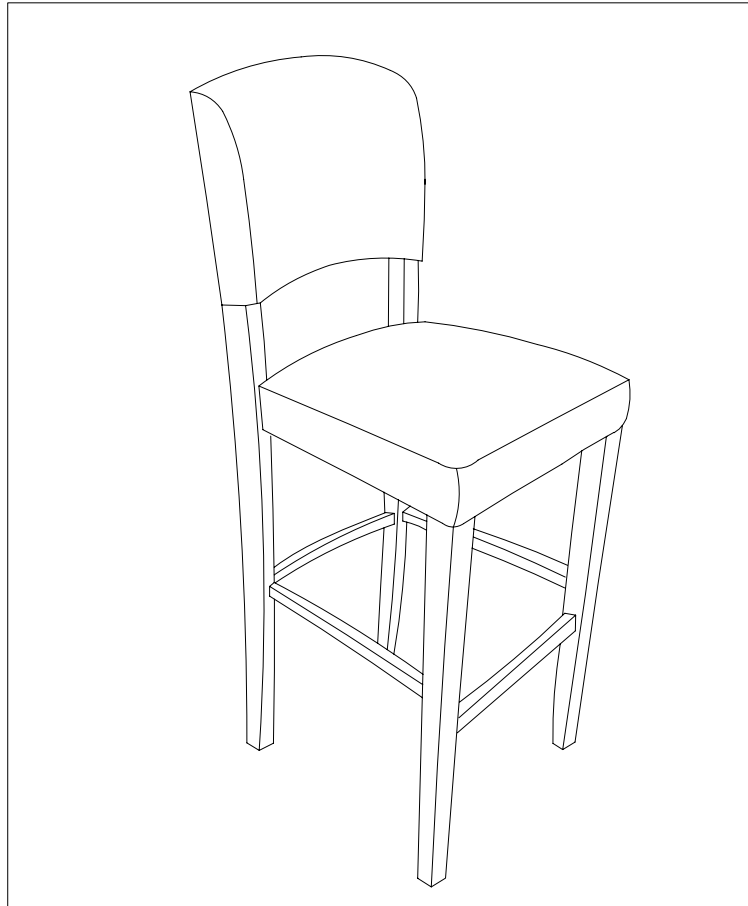

ASSEMBLY INSTRUCTIONS

STOOL

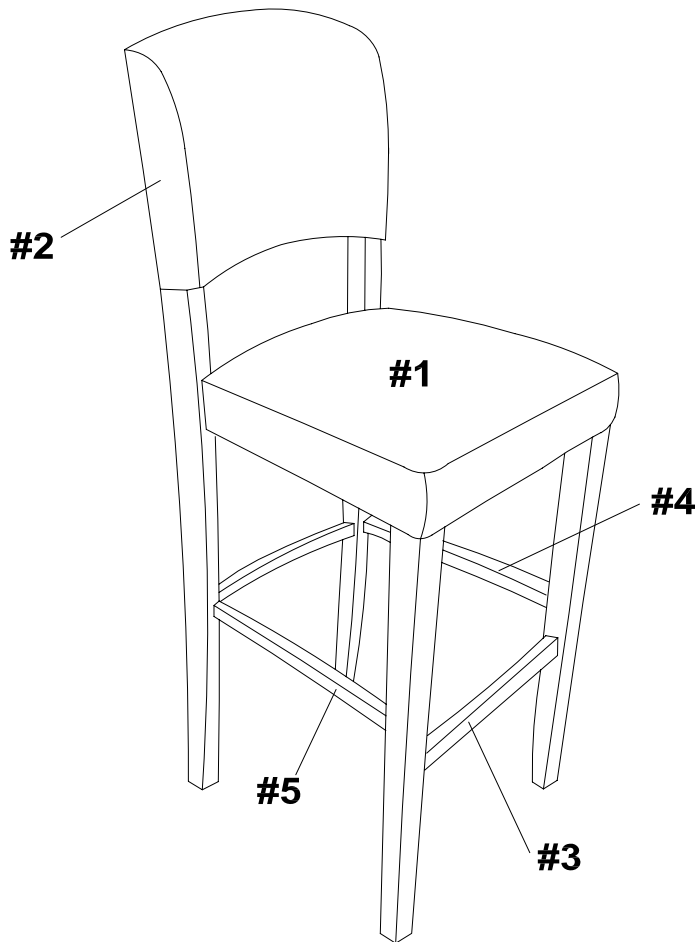


We are here to help!

MADE IN VIETNAM

PARTS IDENTIFICATION

ITEM	DESCRIPTION	QTY
#1	SEAT ASSEMBLY	01
#2	BACK ASSEMBLY	01
#3	FRONT LEG ASSEMBLY	01
#4	RIGHT SIDE STRETCHER	01
#5	LEFT SIDE STRETCHER	01

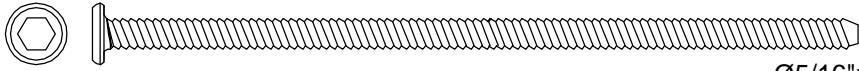


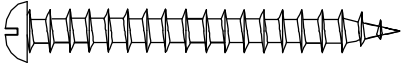





For ease of identification all parts are labeled to correspond to the Step number in which the part is used.

HARDWARE PACKAGE COUNT

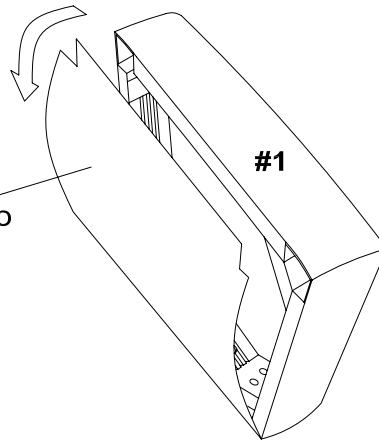
Please line up the hardware with the correct full size image to make sure you are installing the hardware correctly.

HARDWARE IDENTIFICATION

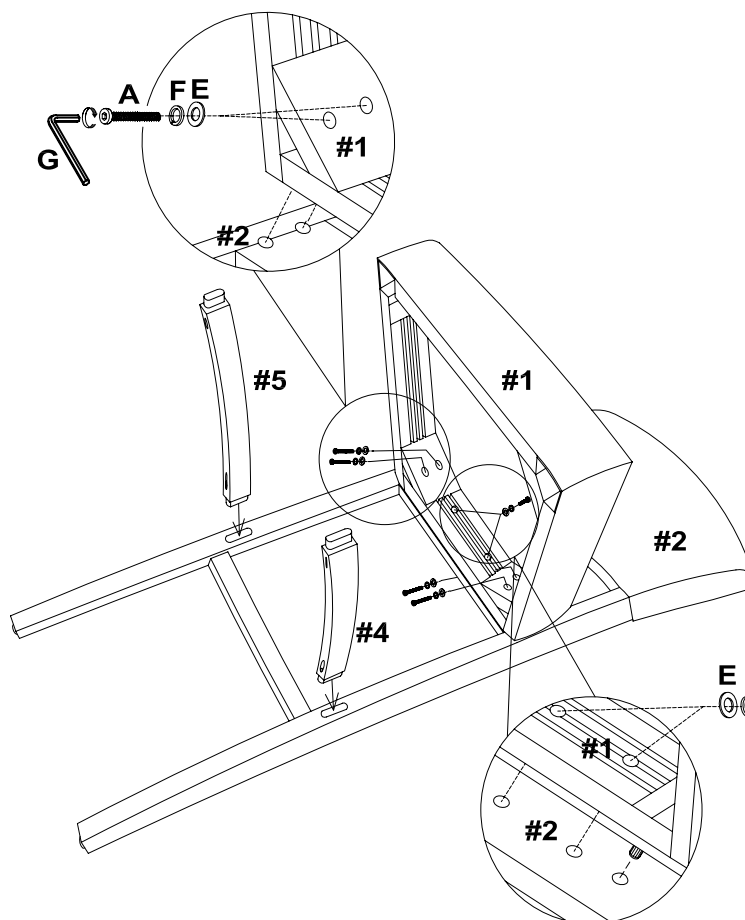
ITEM	PICTURE	DESCRIPTION	QTY
A	 $\text{Ø}5/16" \times 3-3/8" .L$	BACK LEG BOLT	4
B	 $\text{Ø}5/16" \times 2-1/2" .L$	FRONT LEG BOLT	4
C	 $\text{Ø}5/16" \times 1-3/4" .L$	BACK RAIL BOLT	2
D	 $\text{Ø}3/16" \times 1-3/4" L$	WOOD SCREW	4
E	 $\text{Ø}5/16"$	FLAT WASHER	10
F	 $\text{Ø}5/16"$	SPRING WASHER	10
G	 5mm	ALLEN WRENCH	1

STEP 1.

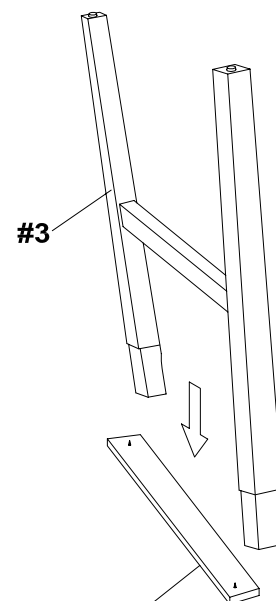
Take off fabric from Velcro before assembling legs.



STEP 2.



STEP 3.



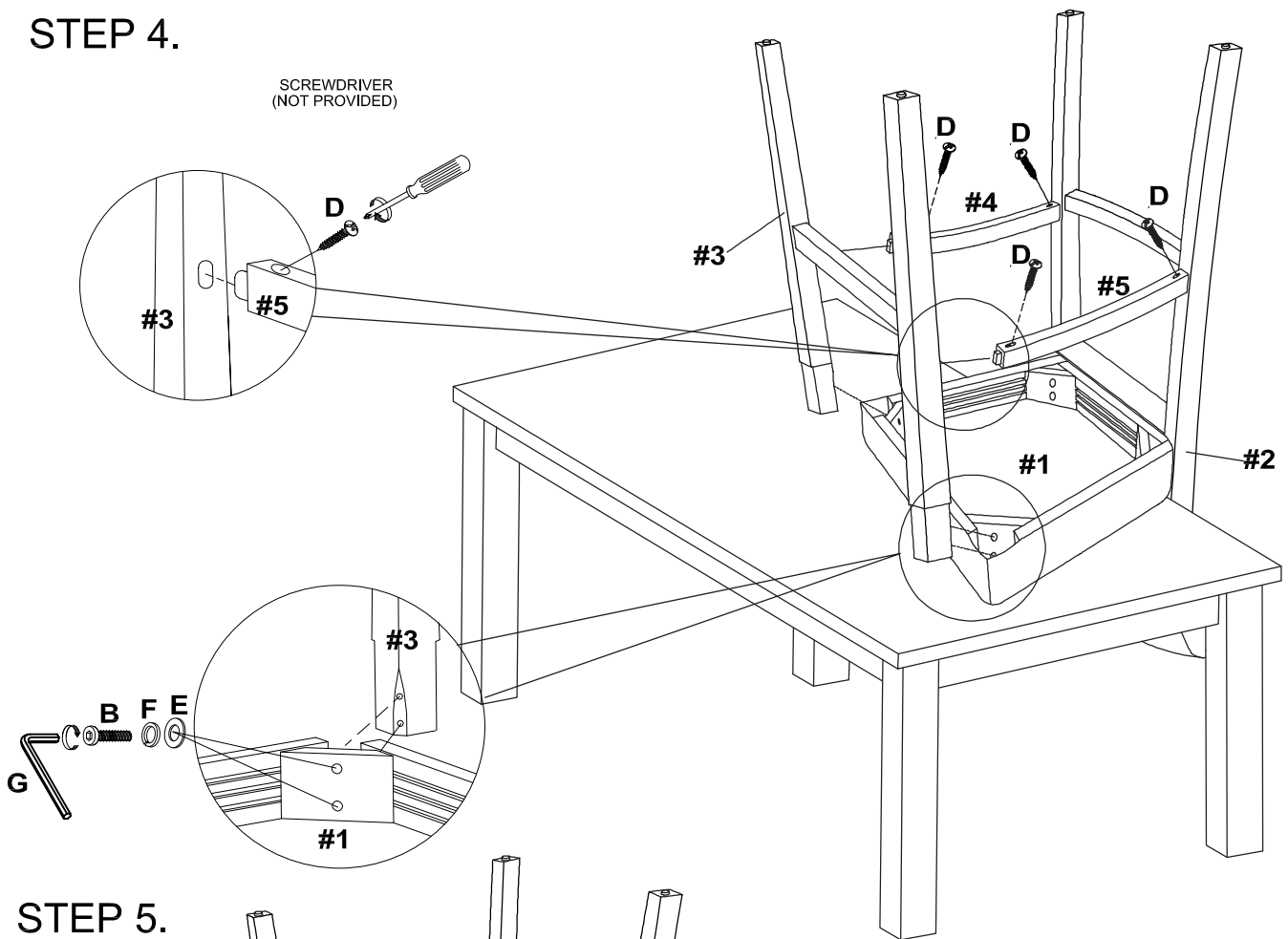
Remove the shipping cleat from end of front leg assembly #3.

IMPORTANT:

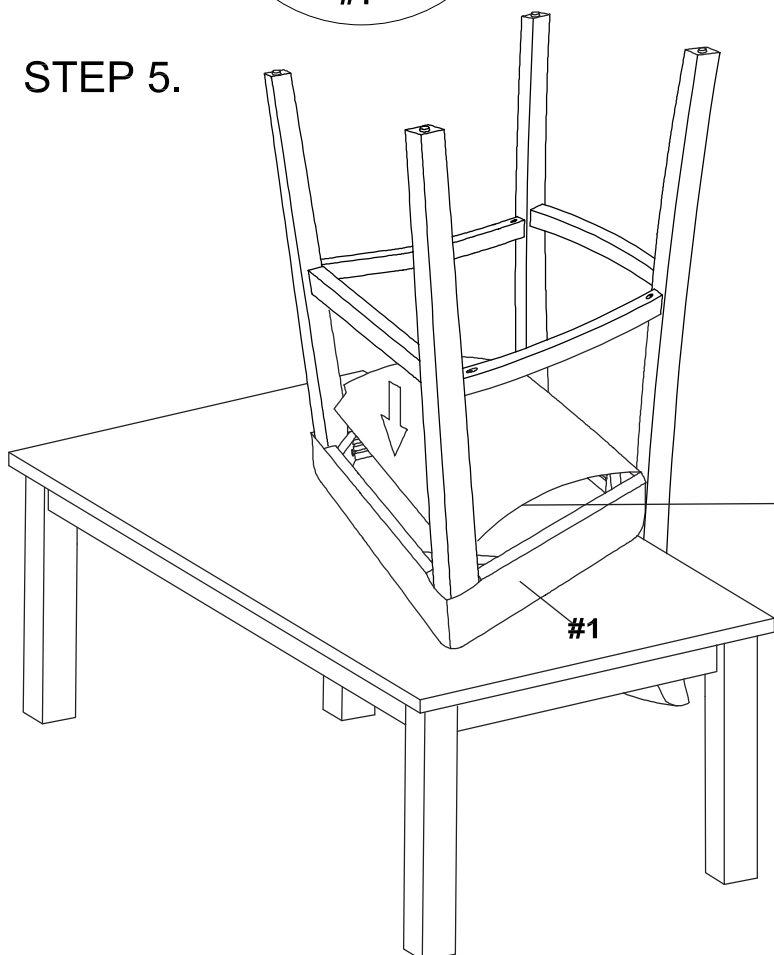
1. DO NOT TIGHTEN BOLTS COMPLETELY UNTIL ALL BOLTS ARE COMPLETELY LINED UP AND INSERTED INTO HOLES / NUTS.
2. DO NOT OVER TIGHTEN SCREWS AND BOLTS TO AVOID STRIPPING.

STEP 4.

SCREWDRIVER
(NOT PROVIDED)



STEP 5.



Re-attach fabric with Velcro once legs are fully assembled.