

Stainless Steel Utility Sink Installation Manual

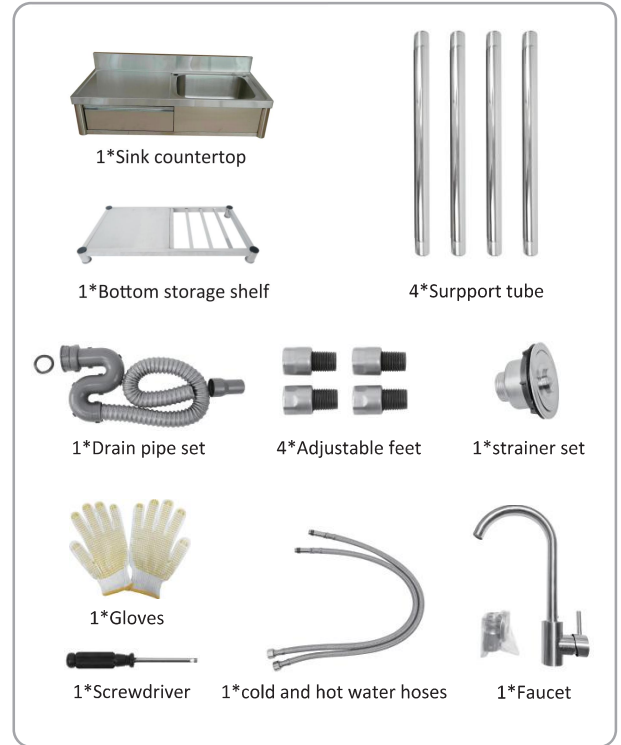


Customer Service : ahomrt@163.com

EN_IMPORTANT, RETAIN FOR FUTURE REFERENCE: READ CAREFULLY.
 FR_IMPORTANT: A LIRE ATTENTIVEMENT ET À CONSERVER POUR CONSULTATION ULTÉRIEURE.
 ES_IMPORTANTE, LEA Y GUARDE PARA FUTURAS REFERENCIAS.
 PT_IMPORTANTE, RETER PARA REFERÊNCIA FUTURA: LEIA ATENTAMENTE.
 DE_WICHTIG! SORFGÄLTIG LESEN UND FÜR SPÄTERES NACHSCHLAGEN AUFBEWAHREN.
 IT_IMPORTANTE! CONSERVARE IL PRESENTE MANUALE PER FUTURO RIFERIMENTO E LEGGERLO ATTENTAMENTE.

PARTS LIST

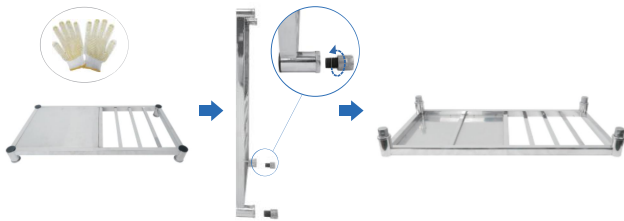
- Before assembling the product, ensure that your package has the following parts. If any of the parts are missing or defective, please contact customer service for help.
- Carefully and strictly follow these assembly & installation instructions to ensure a completed product as designed.
- For better installation, be sure to wear gloves before starting the installation.



UTILITY SINK ASSEMBLY

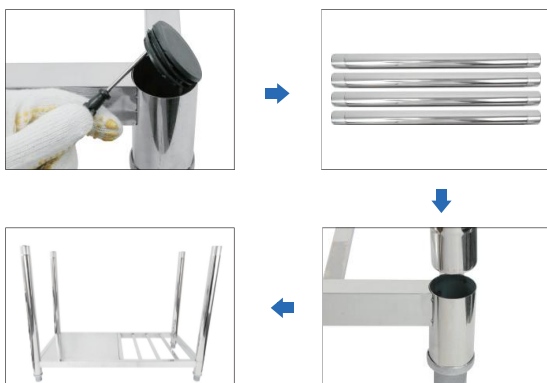
STEP 1

Wear the gloves then screw the adjustable feet into the bottom storage shelf.



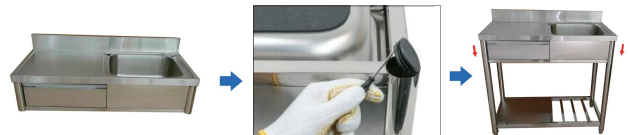
STEP 2

Use the screwdriver to pry off the cover on the bottom storage shelf, then insert the support tube into it.



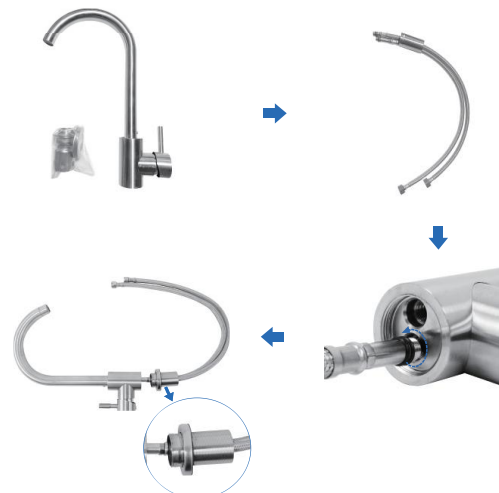
STEP 3

Use the screwdriver to pry off the cover under the sink countertop, then insert it into the support tube.



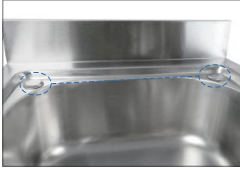
STEP 4

According to the following steps, install the cold and hot water hoses into the faucet.

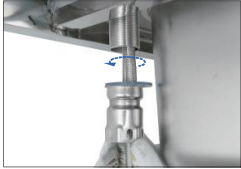


STEP 5

Use the screwdriver to pry off the cover on the sink countertop, insert the faucet into sink countertop and screw it from the bottom to install it.



There are two holes here, you can choose to install the faucet on the left or right



STEP 6

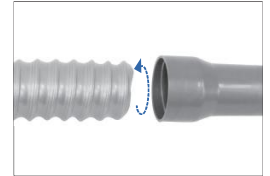
Disassemble the strainer set and install it into sink countertop as shown in the figure.



4

STEP 7

Follow the steps shown in the picture to assemble into a drain pipe set, and screw it into the sink countertop from the bottom.



EN_Precautions.

- Clean with mild detergent and warm water.
- Avoid using abrasive cleaners or scrub brushes.
- Use cutting boards and avoid dragging sharp objects.
- Promptly clean spills to prevent staining.
- Prevent rust by avoiding prolonged contact with iron or steel.
- Rinse after each use and periodically use stainless steel cleaner for maintenance.

5